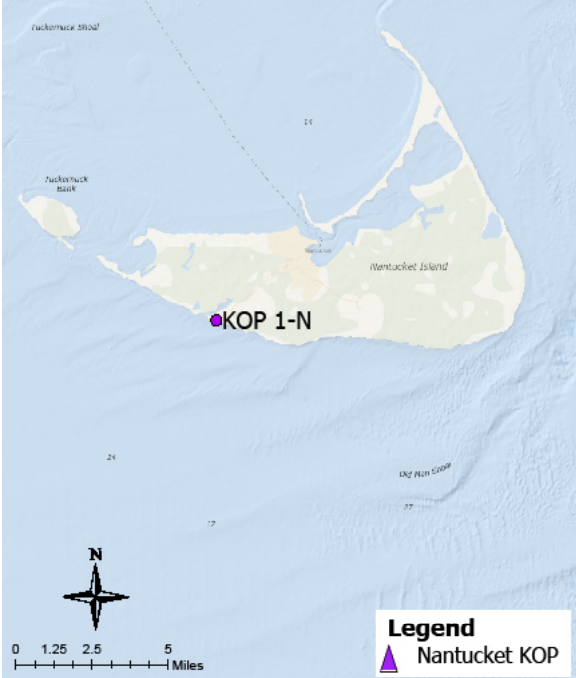


Panoramic Photograph



The sheet should be viewed on a 24 inch monitor scaling the red square to 11" x 17". To view the area outside of the red square, pan the surrounding panoramic image maintaining the 11" x 17" size within the red square.

Baseline Conditions Map



Photograph Information

Location		Project View	
Viewpoint Location	Cisco Beach	Horizontal Field of View	147.2°
Date of Photograph	9/17/20	Horizontal FOV Occupied	18.7°
Seascape/Landscape Character Area	Ocean Beach	Vertical Field of View	39.6°
Time of Photograph	1:22 pm	Viewing Direction	208°
Latitude	41°15'9.19 N	Elevation+Tripod Height:	13 Feet
Longitude	70° 9'15.30" W	Camera Settings:	
Environment		Camera Model	Nikon D4
Temperature	71°F	fstop	f/14
Percent Humidity	81%	ISO	720
Wind Direction & Speed	S 10 mph	Shutter (seconds)	1/3200
Weather Condition	Clear		
Tidal Height	High-mid		
Sun Angle	Front-lit		
Sun Elevation	49.23°		

Context Map



Access
Public beach recreation
Adjacent Amenities
Cisco Bike Path and a moderately sized parking lot with surf rental trucks and food trucks
Adjacent SLCAs
Coastal scrub bush, coastal dunes, Ocean beach, low density residential structures, coastal dunes and coastal scrub bush
Adjacent KOPs
KOP-NA12 Hummock Pond Road Bike Path, KOP-NA18 Ladies Beach, & KOP-NA29 Cisco Beach below Sanford Farm Barn

KOP-NA01 | Cisco Beach | Beacon Wind Project

Baseline Conditions Overview





Time of Day: Afternoon  
Weather Condition: Clear  
Image: Pre-Project Construction

*The sheet should be printed at 11 x 17 inches; full size with no scaling; and viewed at arm's length (24 inches). If viewed on a computer monitor, the document should be viewed on a 24 inch monitor and scaled to 100 percent in Adobe Acrobat at arm's length (24 inches).*

**KOP-NA01 | Cisco Beach | Beacon Wind Project**  
Baseline Conditions

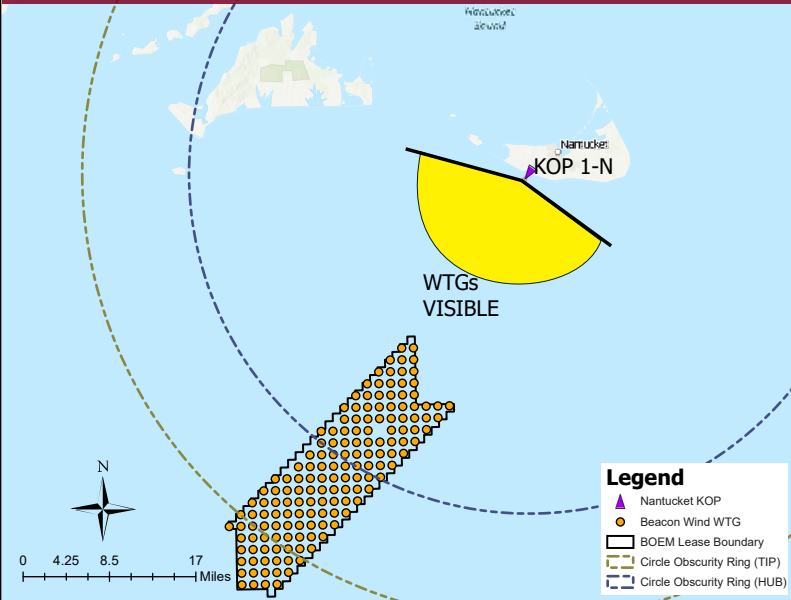


Panoramic Photograph

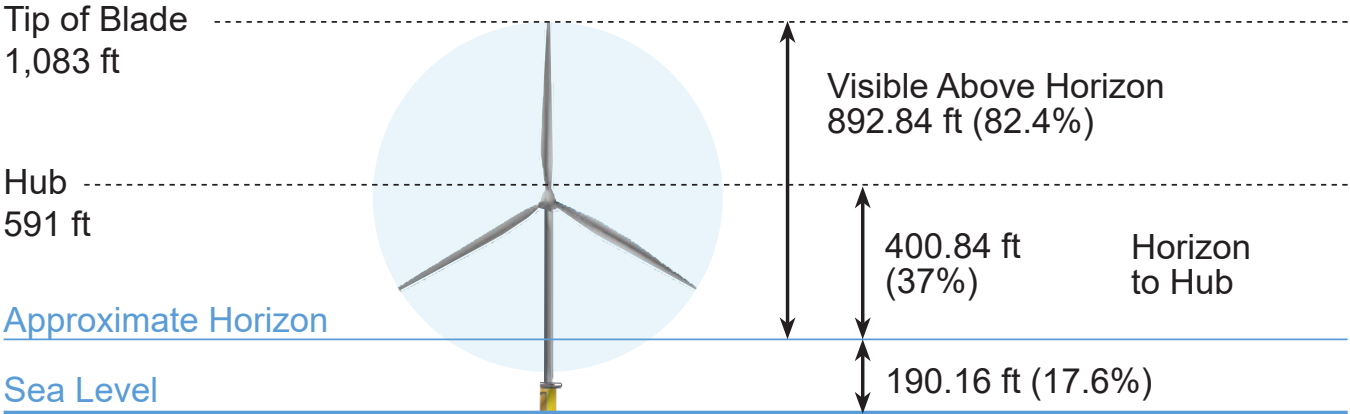


The sheet should be viewed on a 24 inch monitor scaling the red square to 11" x 17". To view the area outside of the red square, pan the surrounding panoramic image maintaining the 11" x 17" size within the red square.

Simulated Conditions



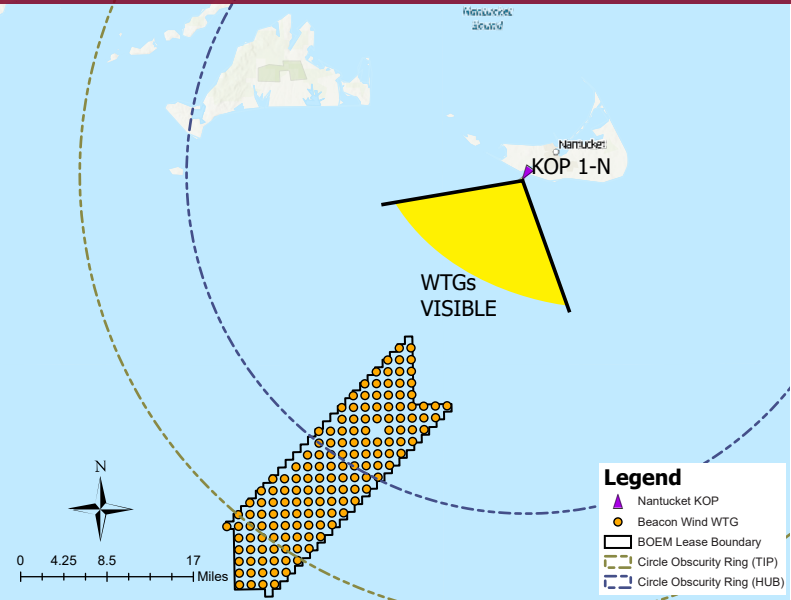
Viewing angle depicted reflects the panoramic shown above



Simulated Conditions Turbine Data

Turbine Data	
Closest Visible WTG	20.6 miles
Furthest Visible WTG	49.9 miles
Structures Potentially Visible	130
Structures Potentially Not Visible	25

Simulated Conditions

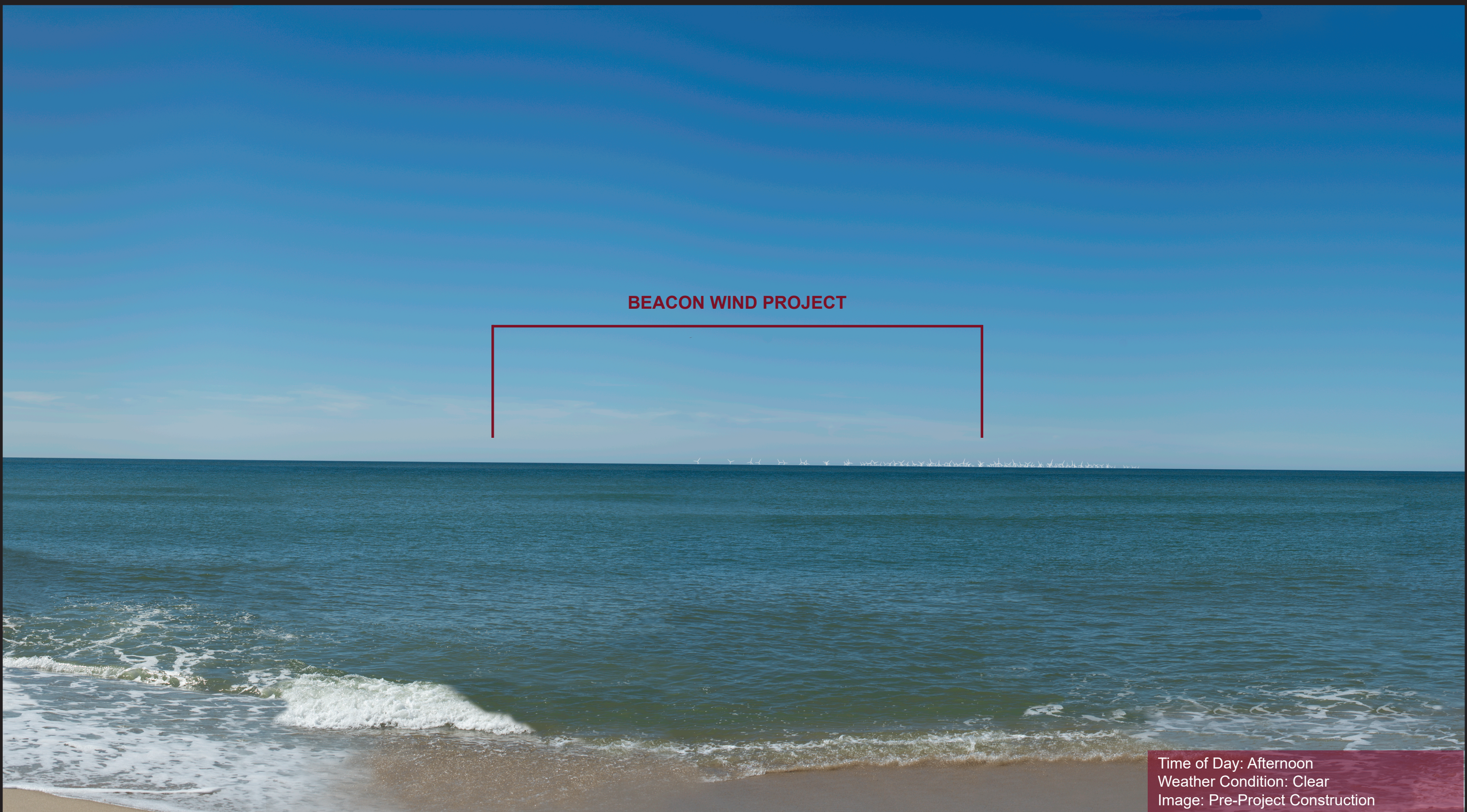


Viewing angle depicted reflects the cropped views shown on the following page

KOP-NA01 | Cisco Beach | Beacon Wind Project

Simulated Conditions Overview





Time of Day: Afternoon  
Weather Condition: Clear  
Image: Pre-Project Construction

The sheet should be printed at 11 x 17 inches; full size with no scaling; and viewed at arm's length (24 inches). If viewed on a computer monitor, the document should be viewed on a 24 inch monitor and scaled to 100 percent in Adobe Acrobat at arm's length (24 inches).