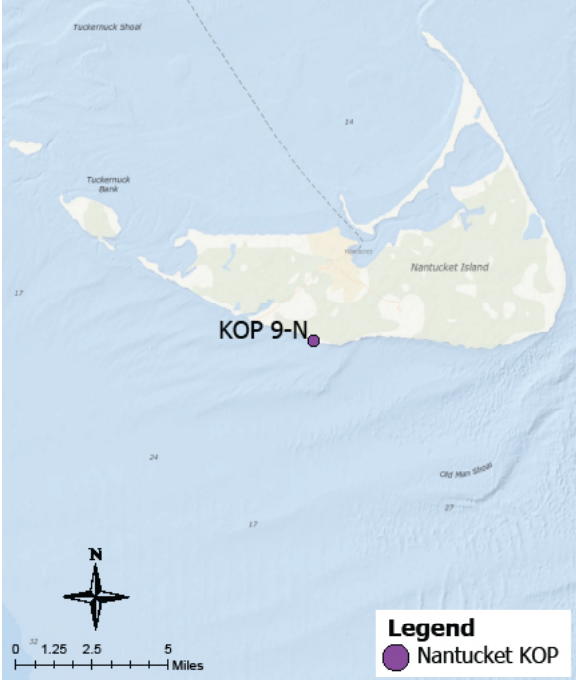


Panoramic Photograph



The sheet should be viewed on a 24 inch monitor scaling the red square to 11" x 17". To view the area outside of the red square, pan the surrounding panoramic image maintaining the 11" x 17" size within the red square.

Baseline Conditions Map



Photograph Information

Viewpoint Location	Miacomet Beach and Pond	Horizontal Field of View	147.2°
Date of Photograph	6/17/21	Horizontal FOV Occupied	20.2°
Seascape/Landscape Character Area	Ocean Beach	Vertical Field of View	39.6°
Time of Photograph	9:40 am	Viewing Direction	212°
Latitude	41°14'34.61"N		
Longitude	70° 7'6.76"W		
Temperature	72°F	Camera Model	Nikon D4
Percent Humidity	44%	fstop	f/14
Wind Direction & Speed	VAR 3 mph	ISO	720
Weather Condition	Partly Cloudy	Shutter (seconds)	1/3200
Tidal Height	Mid-Low		
Sun Angle	Side-lit		
Sun Elevation	41.42°		

Context Map



Access
Public beach recreation
Adjacent Amenities
Small parking lot
Adjacent SLCAs
Ocean beach, coasral scrub bush, low density residential structures, pond
Adjacent KOPs
KOP-NA08 Surfside Beach, KOP-NA18 Ladies Beach, KOP-NA19 Miacomet Golf Club

KOP-NA09 | Miacomet Beach and Pond | Beacon Wind Project

Baseline Conditions Overview





Time of Day: Morning  
Weather Condition: Partly Cloudy  
Image: Pre-Project Construction

The sheet should be printed at 11 x 17 inches; full size with no scaling; and viewed at arm's length (24 inches). If viewed on a computer monitor, the document should be viewed on a 24 inch monitor and scaled to 100 percent in Adobe Acrobat at arm's length (24 inches).

**KOP-NA09 | Miacomet Beach and Pond | Beacon Wind Project**

Baseline Conditions Overview

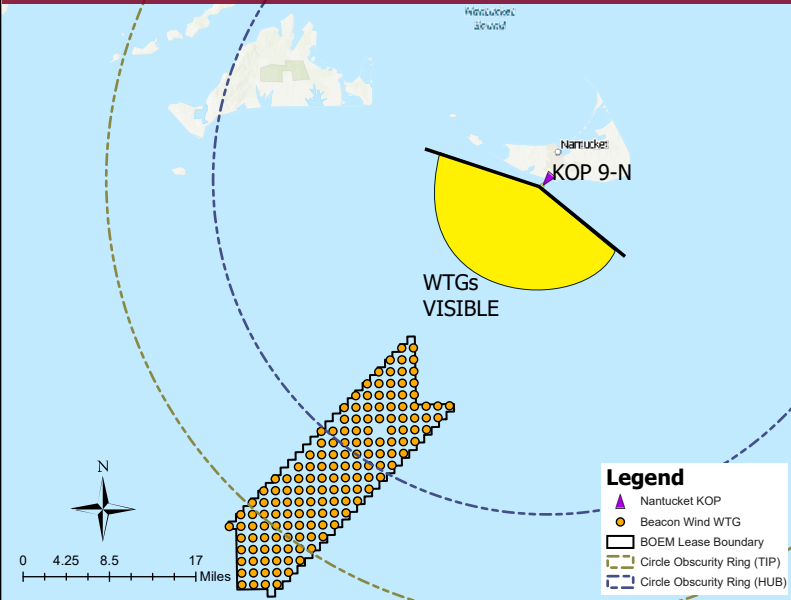


Panoramic Photograph



The sheet should be viewed on a 24 inch monitor scaling the red square to 11" x 17". To view the area outside of the red square, pan the surrounding panoramic image maintaining the 11" x 17" size within the red square.

Simulated Conditions



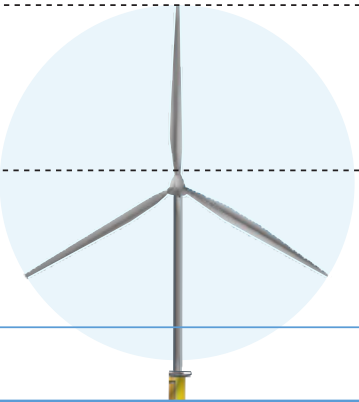
Viewing angle depicted reflects the panoramic shown above

Tip of Blade  
1,083 ft

Hub  
591 ft

Approximate Horizon

Sea Level



Visible Above Horizon  
867.2 ft (80.1%)

375.2 ft  
(34.7%)

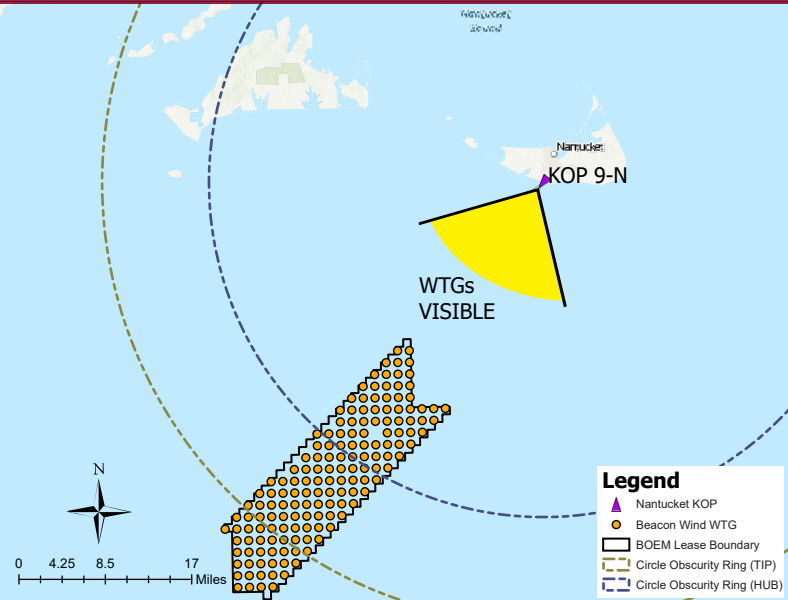
Horizon  
to Hub

215.8 ft (19.9%)

Simulated Conditions Turbine Data

Closest Visable WTG	22.59
Furthest Visable WTG	69.97
Structures Potentially Visible	120
Structures Potentially Not Visible	35

Simulated Conditions



Viewing angle depicted reflects the cropped views shown on the following page

KOP-NA09 | Miacomet Beach and Pond | Beacon Wind Project

Simulated Conditions Overview





Time of Day: Morning  
Weather Condition: Partly Cloudy  
Image: Pre-Project Construction

The sheet should be printed at 11 x 17 inches; full size with no scaling; and viewed at arm's length (24 inches). If viewed on a computer monitor, the document should be viewed on a 24 inch monitor and scaled to 100 percent in Adobe Acrobat at arm's length (24 inches).