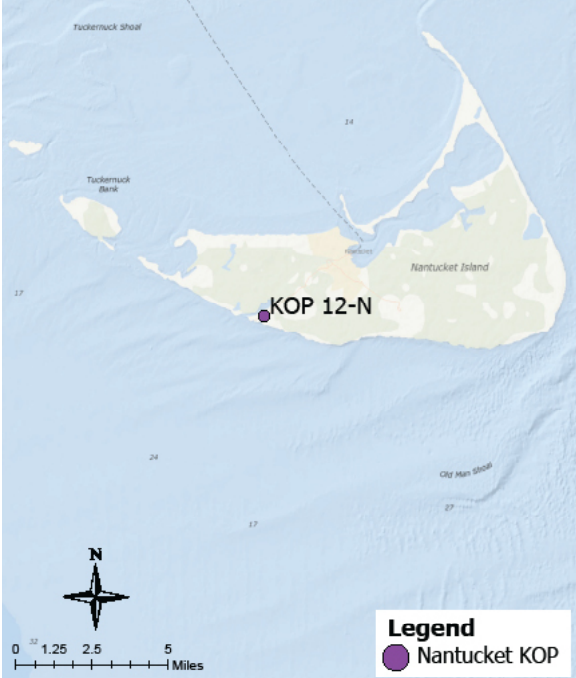


Panoramic Photograph



The sheet should be viewed on a 24 inch monitor scaling the red square to 11" x 17". To view the area outside of the red square, pan the surrounding panoramic image maintaining the 11" x 17" size within the red square.

Baseline Conditions Map

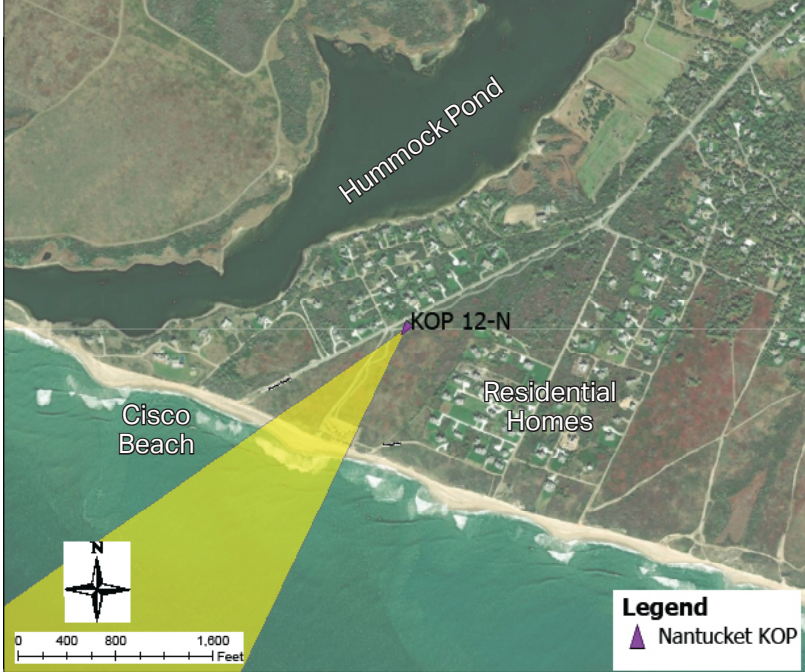


Photograph Information

Location	
Viewpoint Location	Hummock Pond Road Bike Path
Date of Photograph	6/17/21
Seascape/Landscape Character Area	Coastal Scrub Bush, Low Density Rural Settlement
Time of Photograph	9:03 am
Latitude	41° 15' 17.23"N
Longitude	70° 9' 1.03"W
Environment	
Temperature	70°F
Percent Humidity	53%
Wind Direction & Speed	NNW 7 mph
Weather Condition	Hazy
Tidal Height	Mid-Low
Sun Angle	Side-lit
Sun Elevation	41.4°

Project View	
Horizontal Field of View	147.2°
Horizontal FOV Occupied	22.4°
Vertical Field of View	39.6°
Viewing Direction	208°
Elevation+Tripod Height:	25.5 Feet
Camera Settings:	
Camera Model	Nikon D4
fstop	f/14
ISO	720
Shutter (seconds)	1/3200

Context Map



Access
Public recreation path
Adjacent Amenities
Paved biking/waking path ending at Cisco Beach with food and surf rental trucks
Adjacent SLCAs
Coastal scrub bush, medium density residential structures
Adjacent KOPs
KOP-NA01 Cisco Beach, KOP-NA18 Ladies Beach, KOP-NA17 Bartlett's Farm, KOP-NA29 Cisco Beach Below Sanford Farm Barn

KOP-NA12 | Hummock Pond Road Bike Path | Beacon Wind Project

Baseline Conditions Overview



Time of Day: Morning
Weather Condition: Hazy
Image: Pre-Project Construction

The sheet should be printed at 11 x 17 inches; full size with no scaling; and viewed at arm's length (24 inches). If viewed on a computer monitor, the document should be viewed on a 24 inch monitor and scaled to 100 percent in Adobe Acrobat at arm's length (24 inches).

KOP-NA12 | Hummock Pond Road Bike Path | Beacon Wind Project

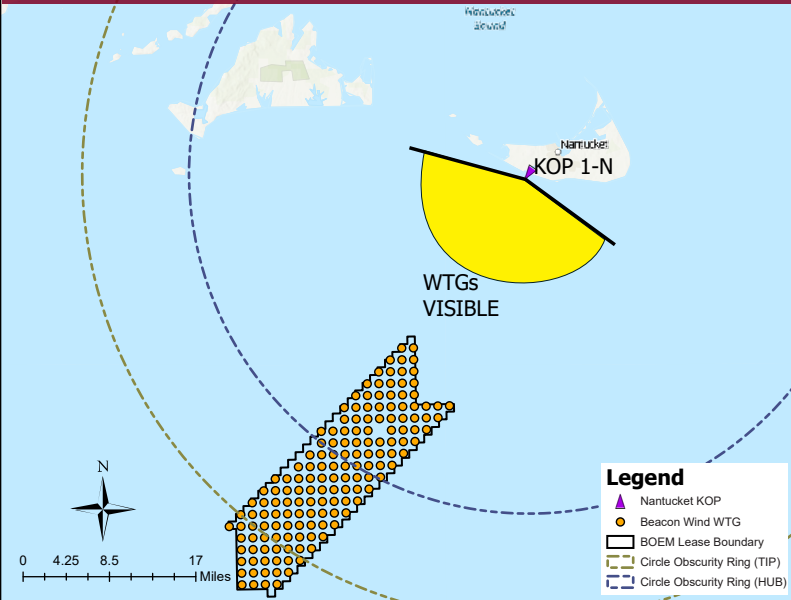
Baseline Conditions

Panoramic Photograph



The sheet should be viewed on a 24 inch monitor scaling the red square to 11" x 17". To view the area outside of the red square, pan the surrounding panoramic image maintaining the 11" x 17" size within the red square.

Simulated Conditions



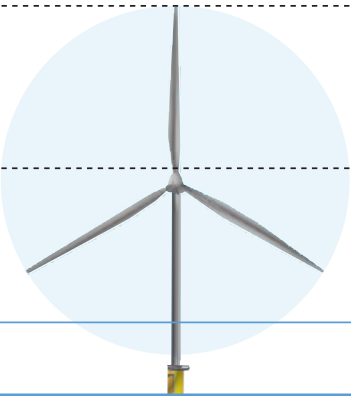
Viewing angle depicted reflects the panoramic shown above

Tip of Blade
1,083 ft

Hub
591 ft

Approximate Horizon

Sea Level



Visible Above Horizon
940.7 ft (86.9%)

448.7 ft
(41.5%)

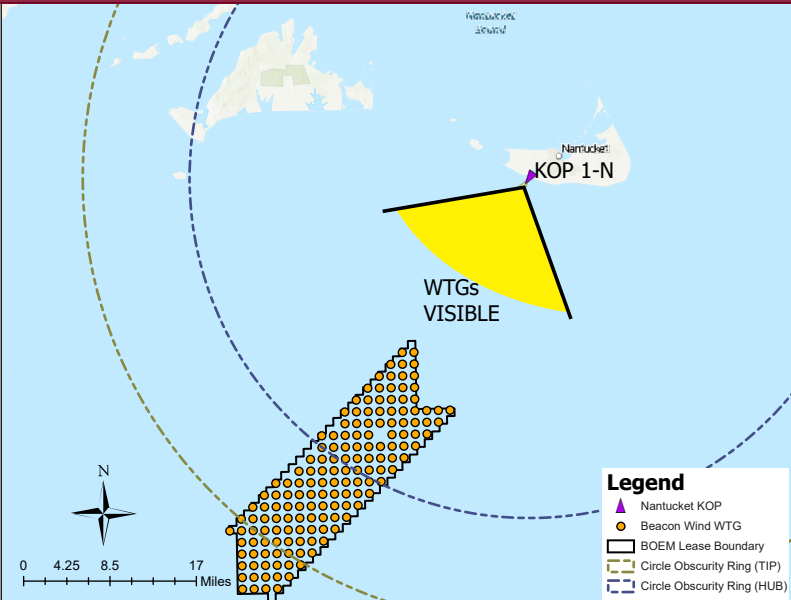
Horizon
to Hub

142.3 ft (13.1%)

Simulated Conditions Turbine Data

Turbine Data	
Closest Visible WTG	20.79
Furthest Visible WTG	49.6
Structures Potentially Visible	144
Structures Potentially Not Visible	11

Simulated Conditions



Viewing angle depicted reflects the cropped views shown on the following pages

KOP-NA12 | Hummock Pond Road Bike Path | Beacon Wind Project

Simulated Conditions Overview



BEACON WIND PROJECT

Time of Day: Morning
Weather Condition: Hazy
Image: Pre-Project Construction

The sheet should be printed at 11 x 17 inches; full size with no scaling; and viewed at arm's length (24 inches). If viewed on a computer monitor, the document should be viewed on a 24 inch monitor and scaled to 100 percent in Adobe Acrobat at arm's length (24 inches).