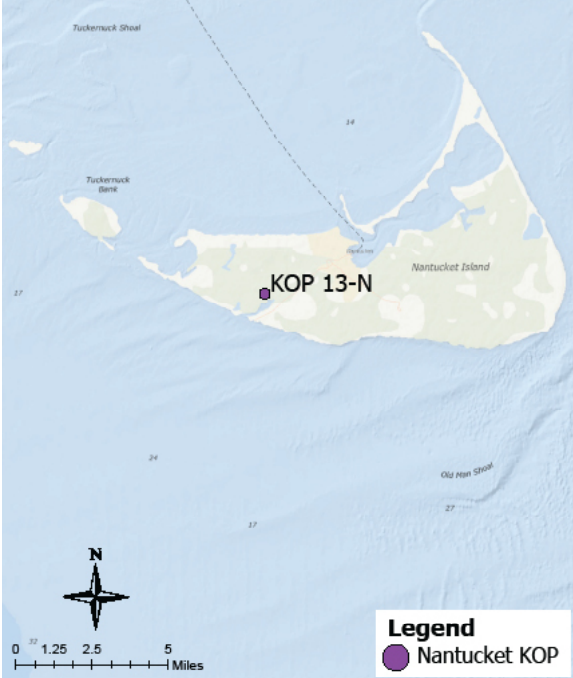


Panoramic Photograph



The sheet should be viewed on a 24 inch monitor scaling the red square to 11" x 17". To view the area outside of the red square, pan the surrounding panoramic image maintaining the 11" x 17" size within the red square.

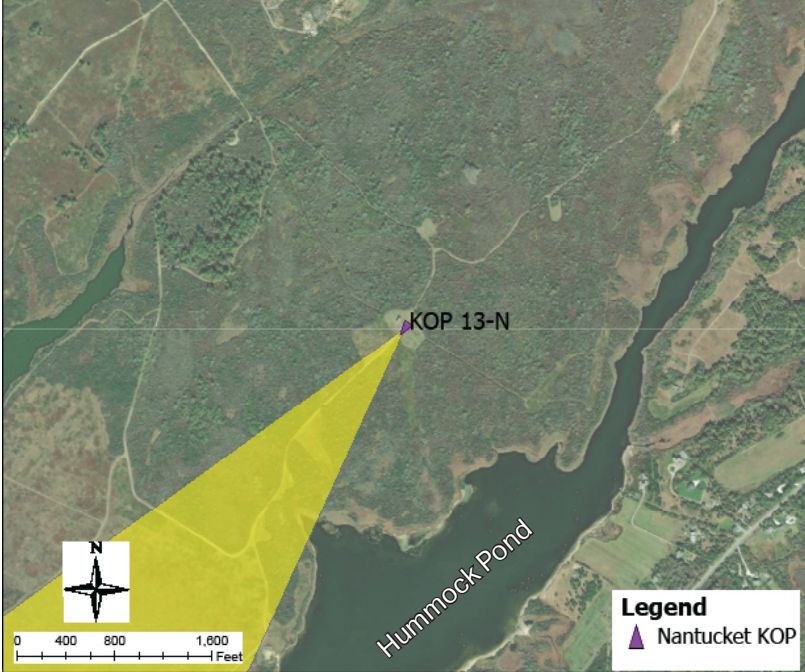
Baseline Conditions Map



Photograph Information

Location		Project View	
Viewpoint Location	NCF Sanford Farm Barn Overlook	Horizontal Field of View	147.2°
Date of Photograph	10/3/20	Horizontal FOV Occupied	22.1°
Seascape/Landscape Character Area	Agricultural/Open Field	Vertical Field of View	39.6°
Time of Photograph	2:43 pm	Viewing Direction	215°
Latitude	41°15'56.22"N	Elevation+Tripod Height:	50.5 Feet
Longitude	70° 9'0.00"W	Camera Settings:	
Environment		Camera Model	Nikon D4
Temperature	68°F	fstop	f/14
Percent Humidity	45%	ISO	720
Wind Direction & Speed	WSW 9 mph	Shutter (seconds)	1/3200
Weather Condition	Clear		
Tidal Height	High		
Sun Angle	Back-lit		
Sun Elevation	37.17°		

Context Map



Access
Public recreation path
Adjacent Amenities
Dirt biking/walking paths
Adjacent SLCAs
residential structures
Adjacent KOPs
KOP-NA29 Cisco Beach Below Sanford Farm Barn, KOP-NA16 Head of Plains, KOP-NA12 Hummock Pond Road Bike Path, KOP-NA17 Bartlett's Farm

KOP-NA13 | NCF Sanford Farm Barn Overlook | Beacon Wind Project

Baseline Conditions Overview



The sheet should be printed at 11 x 17 inches; full size with no scaling; and viewed at arm's length (24 inches). If viewed on a computer monitor, the document should be viewed on a 24 inch monitor and scaled to 100 percent in Adobe Acrobat at arm's length (24 inches).

KOP-NA13 | NCF Sandford Farm Barn Overlook | Beacon Wind Project

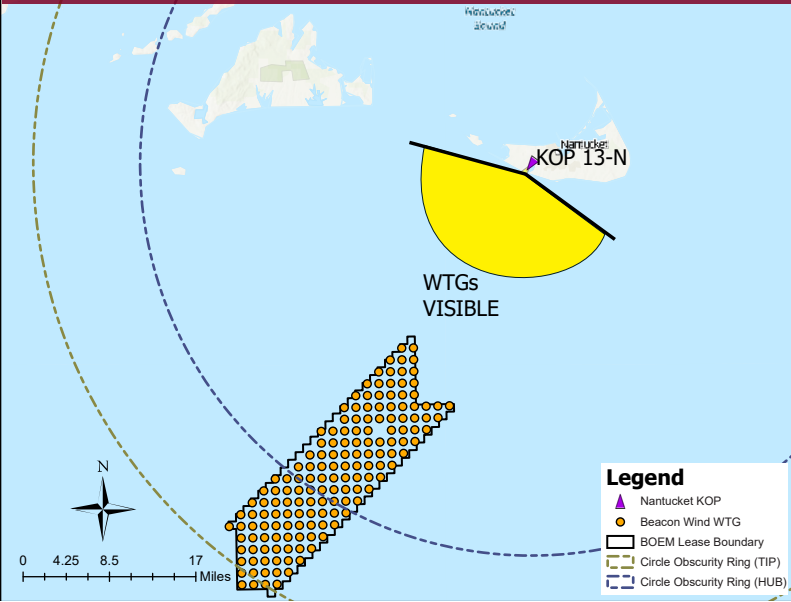
Baseline Conditions

Panoramic Photograph



The sheet should be viewed on a 24 inch monitor scaling the red square to 11" x 17". To view the area outside of the red square, pan the surrounding panoramic image maintaining the 11" x 17" size within the red square.

Simulated Conditions



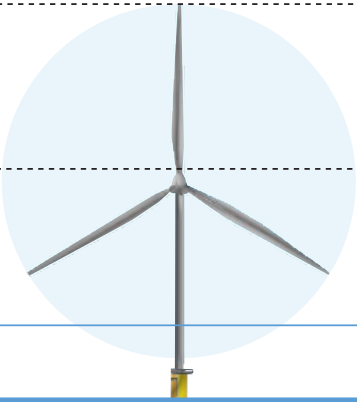
Viewing angle depicted reflects the panoramic shown above

Tip of Blade
1,083 ft

Hub
591 ft

Approximate Horizon

Sea Level



Visible Above Horizon
974.9 ft (90%)

482.9 ft
(44.6%)

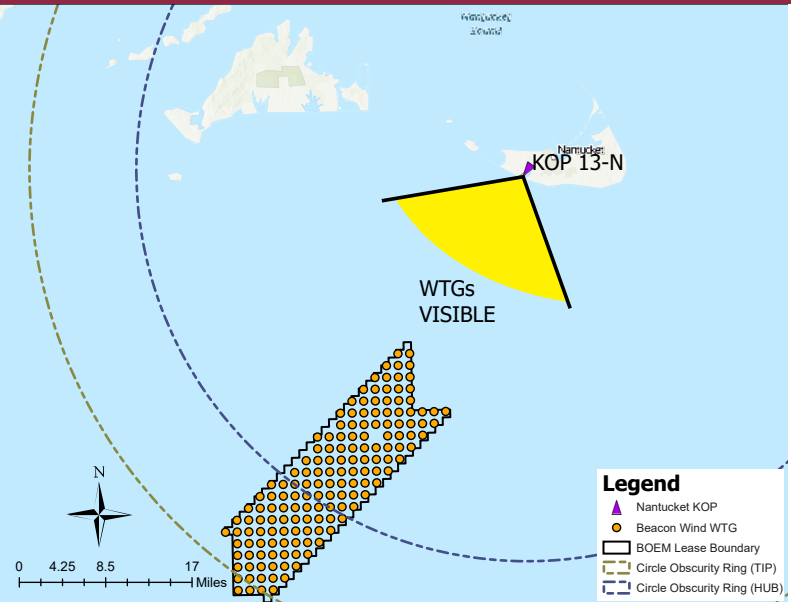
Horizon
to Hub

108.1 ft (10%)

Simulated Conditions Turbine Data

Turbine Data	
Closest Visible WTG	21.43
Furthest Visible WTG	50.19
Structures Potentially Visible	152
Structures Potentially Not Visible	3

Simulated Conditions



Viewing angle depicted reflects the cropped views shown on the following pages

KOP-NA13 | NCF Sanford Farm Barn Overlook | Beacon Wind Project

Simulated Conditions Overview



BEACON WIND PROJECT

Time of Day: Afternoon
Weather Condition: Clear
Image: Pre-Project Construction

The sheet should be printed at 11 x 17 inches; full size with no scaling; and viewed at arm's length (24 inches). If viewed on a computer monitor, the document should be viewed on a 24 inch monitor and scaled to 100 percent in Adobe Acrobat at arm's length (24 inches).