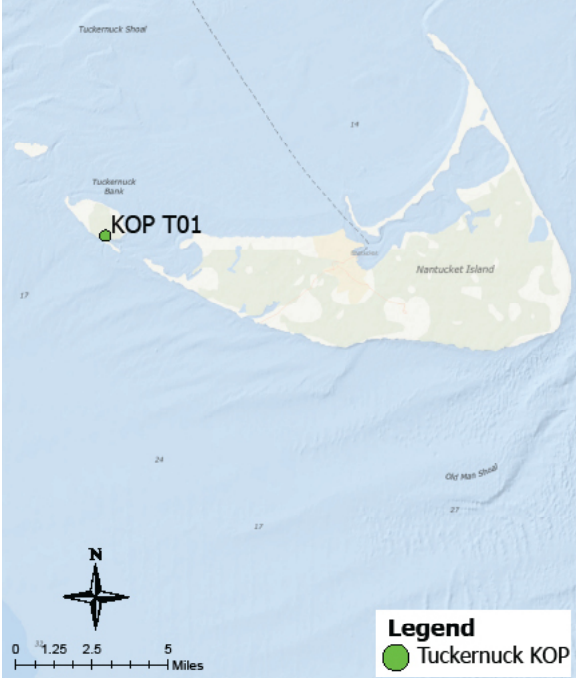


Panoramic Photograph



The sheet should be viewed on a 24 inch monitor scaling the red square to 11" x 17". To view the area outside of the red square, pan the surrounding panoramic image maintaining the 11" x 17" size within the red square.

Baseline Conditions Map



Photograph Information

Location	
Viewpoint Location	Tuckernuck 1
Date of Photograph	10/4//20
Seascape/Landscape Character Area	Ocean Beach
Time of Photograph	7:42 am
Latitude	41°17'40.41" N
Longitude	70° 15'13.42" W
Environment	
Temperature	55°F
Percent Humidity	80%
Wind Direction & Speed	NNW 15 mph
Weather Condition	Clear
Tidal Height	Low
Sun Angle	Side-Lit
Sun Elevation	10.42°

Project View	
Horizontal Field of View	147.2°
Horizontal FOV Occupied	28.9°
Vertical Field of View	39.6°
Viewing Direction	205°
Elevation+Tripod Height:	6.5 Feet
Camera Settings:	
Camera Model	Nikon D4
fstop	f/14
ISO	720
Shutter (seconds)	1/3200

Context Map



Access
Public beach recreation
Adjacent Amenities
None
Adjacent SLCAs
Ocean beach, coastal dunes, open ocean, coastal scrub bush, very low density residential structures
Adjacent KOPs
KOP T02 Tuckernuck 2

KOP-T01 | Tuckernuck 1 | Beacon Wind Project

Baseline Conditions



Time of Day: Morning
Weather Condition: Clear
Image: Pre-Project Construction

The sheet should be printed at 11 x 17 inches; full size with no scaling; and viewed at arm's length (24 inches). If viewed on a computer monitor, the document should be viewed on a 24 inch monitor and scaled to 100 percent in Adobe Acrobat at arm's length (24 inches).

KOP-T01 | Tuckernuck 1 | Beacon Wind Project

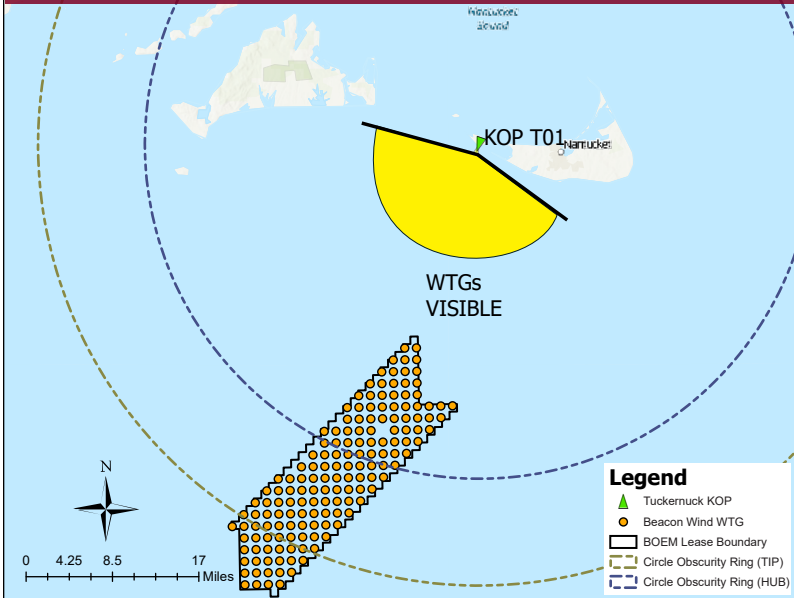
Baseline Conditions

Panoramic Photograph



The sheet should be viewed on a 24 inch monitor scaling the red square to 11" x 17". To view the area outside of the red square, pan the surrounding panoramic image maintaining the 11" x 17" size within the red square.

Simulated Conditions



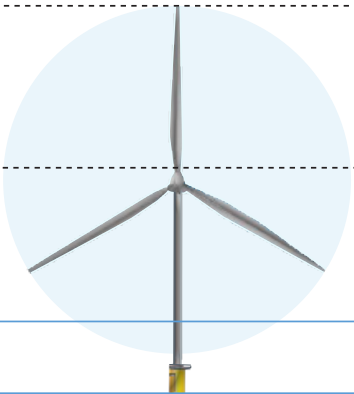
Viewing angle depicted reflects the panoramic shown above

Tip of Blade
1,083 ft

Hub
591 ft

Approximate Horizon

Sea Level



Visible Above Horizon
870.8 ft (80.4%)

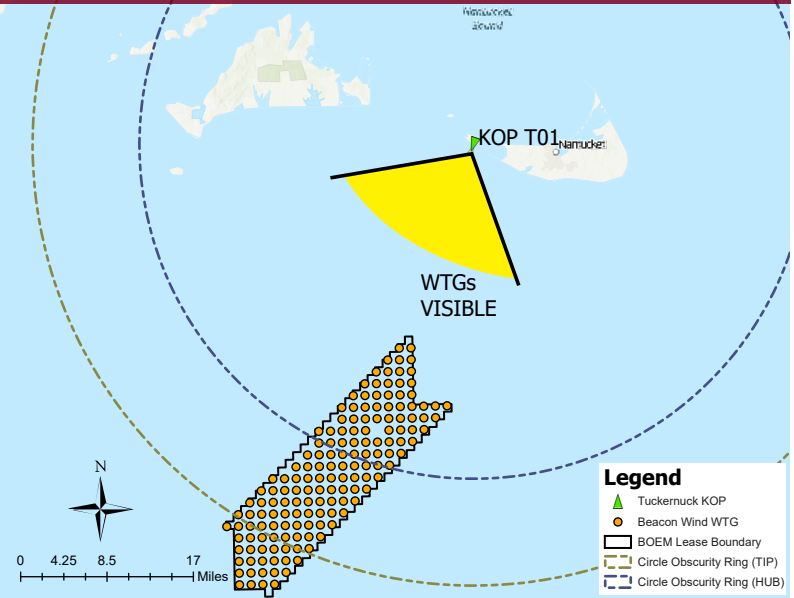
378.8 ft (35%)
Horizon to Hub

212.2 ft (19.6%)

Simulated Conditions Turbine Data

Turbine Data	
Closest Visible WTG	20.96 miles
Furthest Visible WTG	49.1 miles
Structures Potentially Visible	129
Structures Potentially Not Visible	26

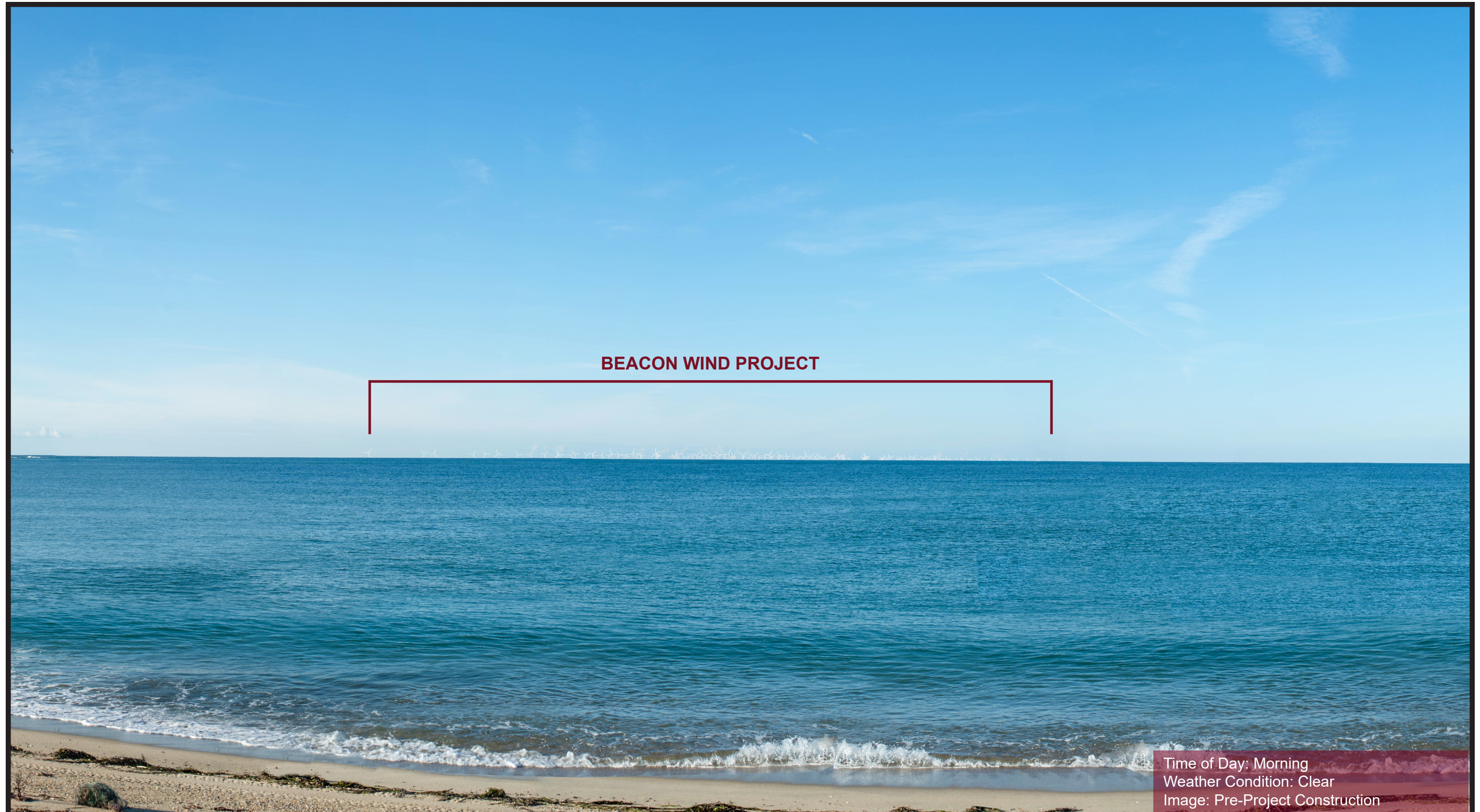
Simulated Conditions



Viewing angle depicted above reflects the cropped view shown on the following page

KOP-T01 | Tuckernuck 1 | Beacon Wind Project

Simulated Conditions Overview



BEACON WIND PROJECT

Time of Day: Morning
Weather Condition: Clear
Image: Pre-Project Construction

The sheet should be printed at 11 x 17 inches; full size with no scaling; and viewed at arm's length (24 inches). If viewed on a computer monitor, the document should be viewed on a 24 inch monitor and scaled to 100 percent in Adobe Acrobat at arm's length (24 inches).

KOP-T01 | Tuckernuck 1 | Beacon Wind Project

Simulated Conditions

Number of WTG shown: 129

Number of WTG out of picture: 26