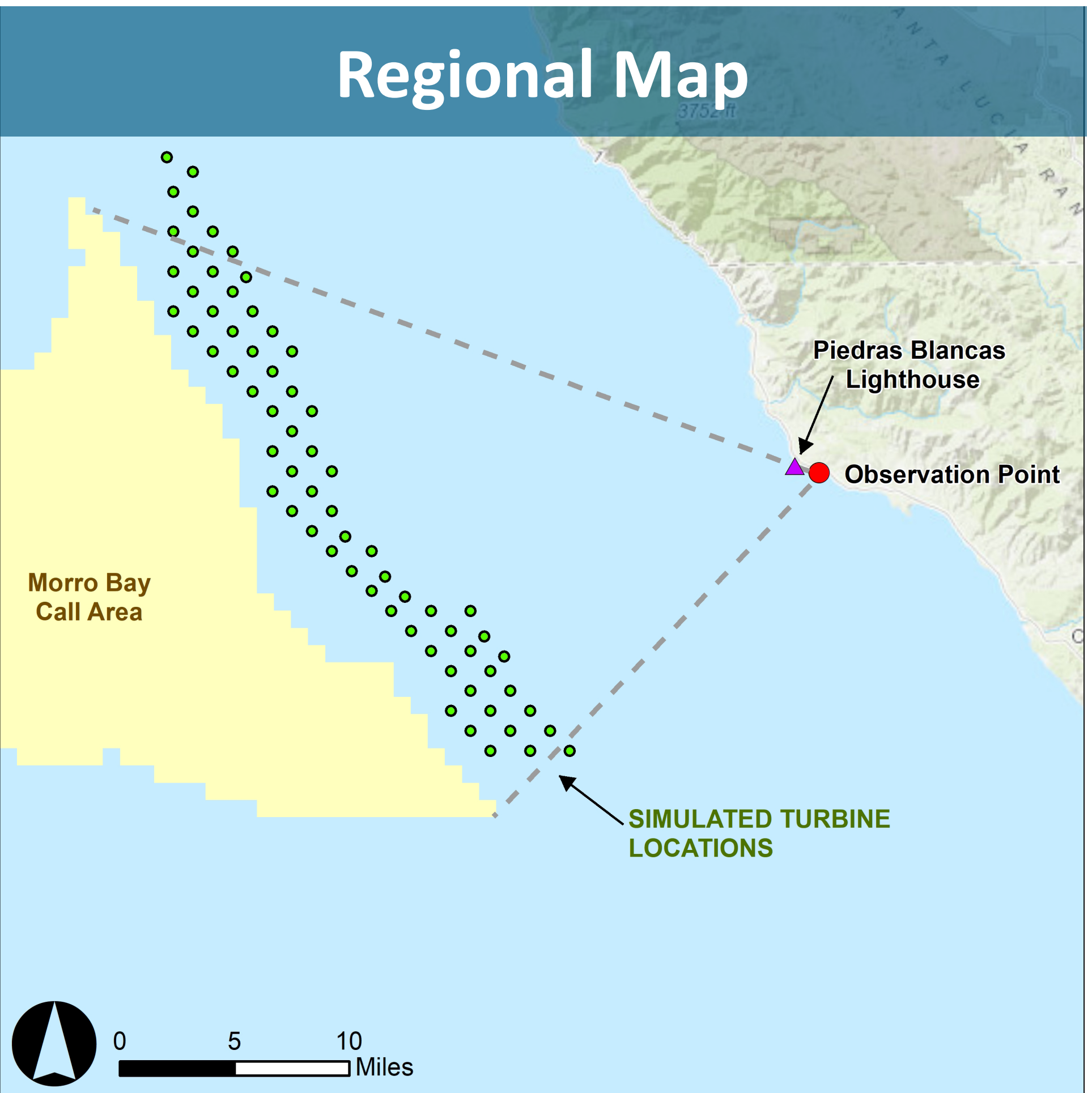
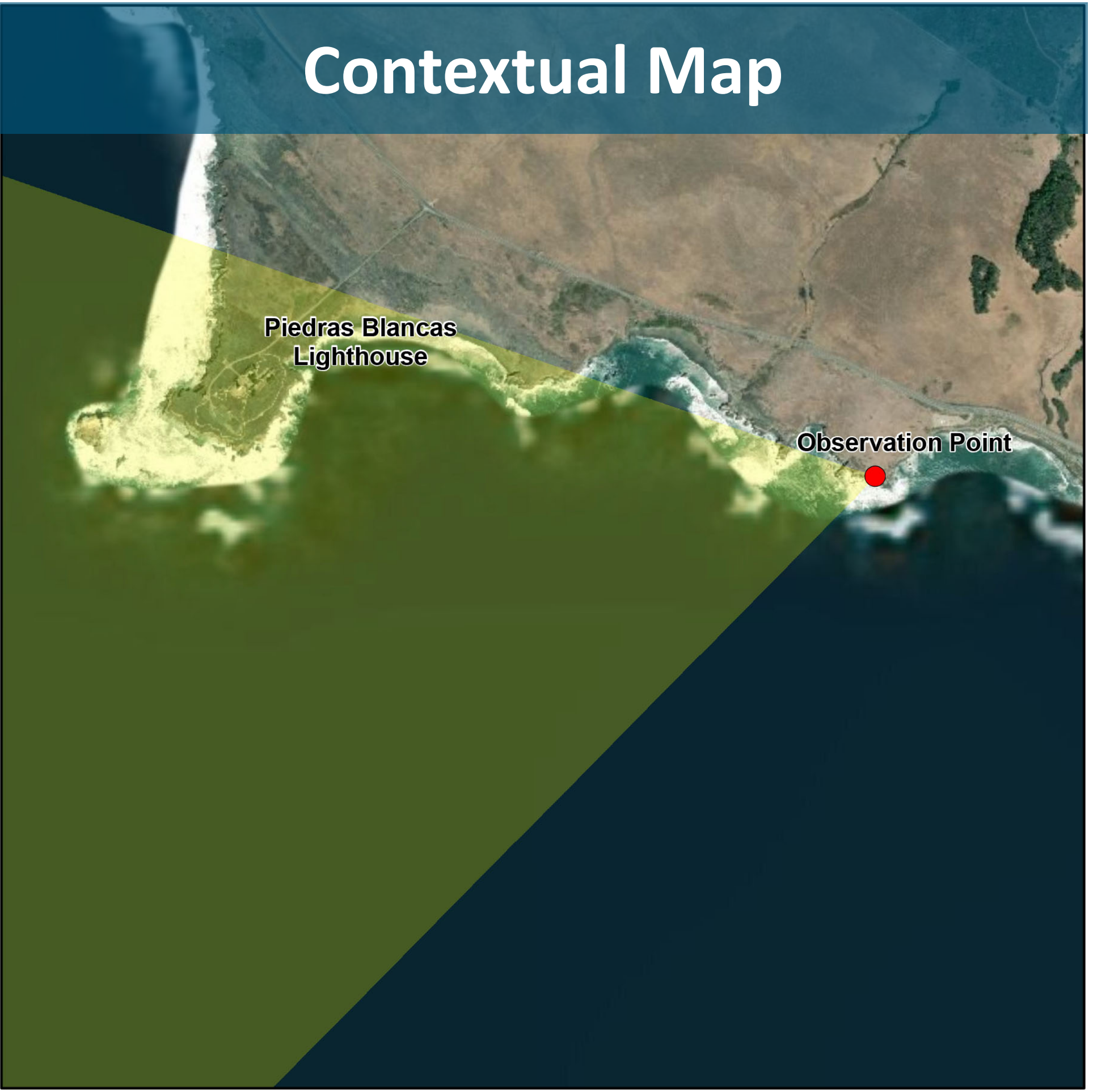




Piedras Blancas State Marine Reserve, San Simeon CA

Proposed Nighttime View , 15 Miles Distant

Production Date: June 20, 2019



Viewpoint & Project Data

Piedras Blancas State Marine Reserve, San Simeon CA

Date	May 25, 2019	Distance to Closest WTG.....	15 stat. mi.
Time	2200 Hrs	Temperature.....	55°F
Camera Coordinates	UTM 210N Meters	Weather Conditions	Cloudy
Northing	3947976.3	Humidity	93%
Eastng	657080.2	Wave Height.....	1-2 Feet
Height to Lens	5.1 Feet	Lighting Conditions	Ambient
Ground Elevation.....	31 Feet	Turbine Output.....	15 MW
Camera Make	Nikon	Turbine Hub Height	486 Ft
Camera Model	D810	Turbine Maximum Blade Height.....	889 Ft
Focal Length	50 mm	Turbine Blade Length.....	397 Ft
Field of View	124° x 55°		

Turbine lighting based on FAA Advisory Circular AC 707460-1L CHG2 "Obstruction Marking and Lighting", 08/17/2018, Sec. 13.7 "Wind Turbines at or Above 650 Feet (213 m)". The simulated turbine lighting includes two 2 lights on the nacelle and 3 on the tower per the FAA specification.