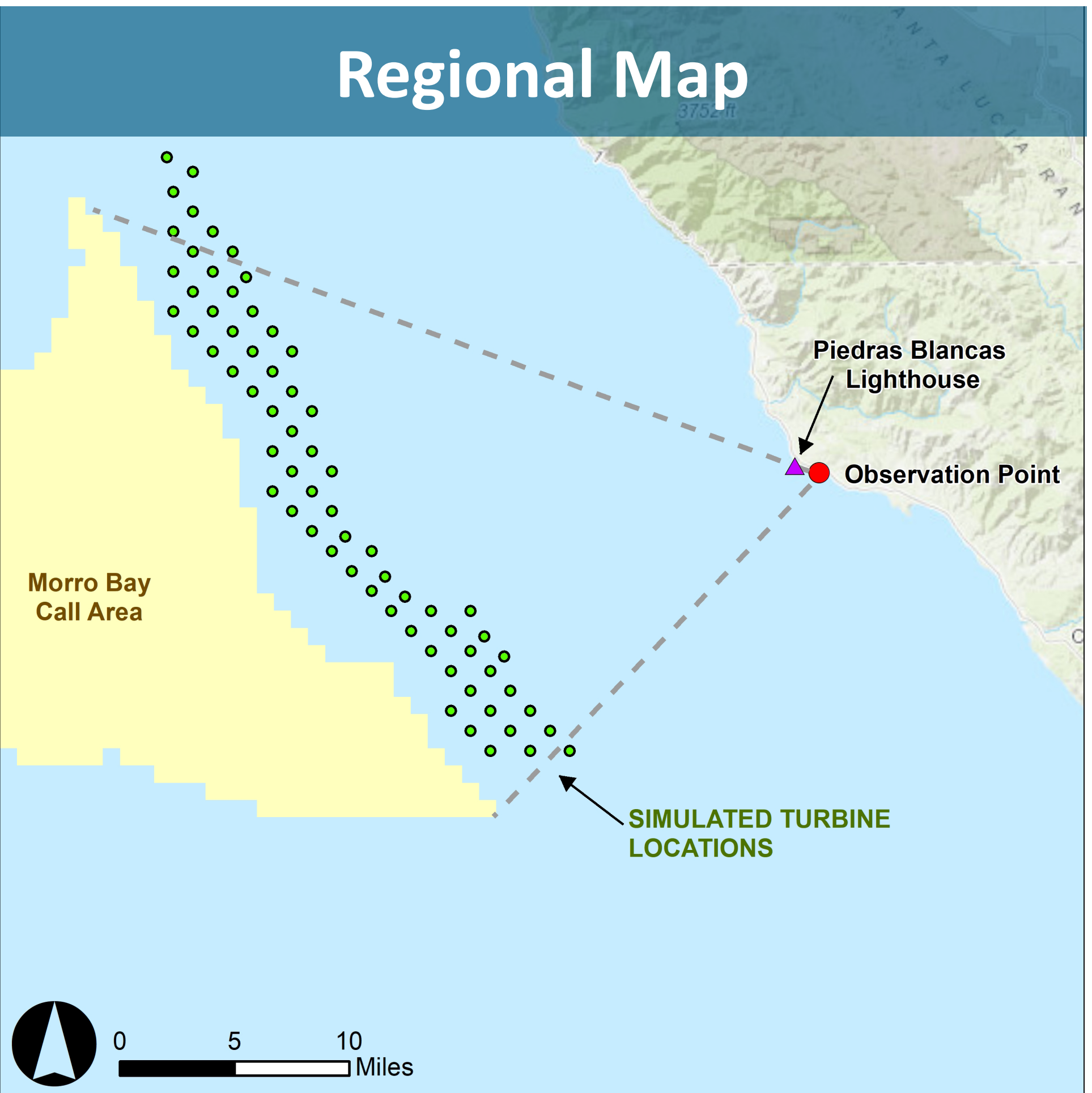
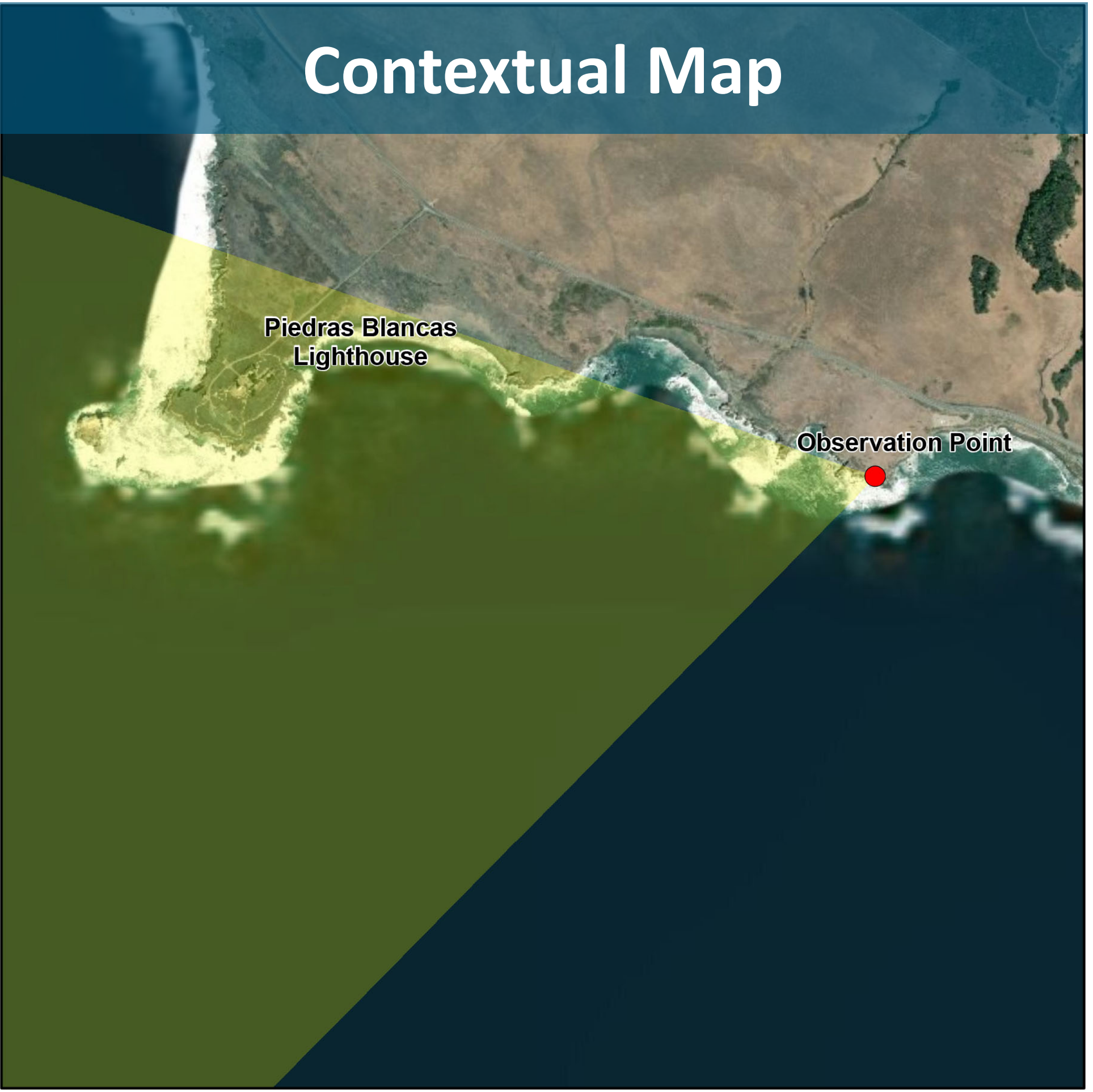




Piedras Blancas State Marine Reserve, San Simeon CA

Proposed Morning View , 15 Miles Distant

Production Date: June 20, 2019



Viewpoint & Project Data			
Piedras Blancas State Marine Reserve, San Simeon CA			
Date .....	May 25, 2019	Distance to Closest WTG.....	15 stat. mi.
Time .....	0900 Hrs	Temperature.....	52°F
Camera Coordinates ....	UTM 210N Meters	Weather Conditions .....	Cloudy
Northing .....	3947976.3	Humidity .....	93%
Easting .....	657080.2	Wave Height.....	1-2 Feet
Height to Lens .....	5.1 Feet	Lighting Conditions .....	Ambient
Ground Elevation.....	31 Feet	Turbine Output.....	15 MW
Camera Make .....	Nikon	Turbine Hub Height .....	486 Ft
Camera Model .....	D810	Turbine Maximum Blade Height.....	889 Ft
Focal Length .....	50 mm	Turbine Blade Length.....	397 Ft
Field of View .....	124° x 55°		