



# United States Department of the Interior

BUREAU OF OCEAN ENERGY MANAGEMENT

Alaska OCS Region

3801 Centerpoint Drive, Suite 500

Anchorage, Alaska 99503-5823

Geological or Geophysical Data or Information Announcement of Availability

## Outer Continental Shelf (OCS) Permit 82-33 NORTH ALEUTIAN OCS PLANNING AREA

Date: September 2016

Permittee: Geophysical Service Inc.

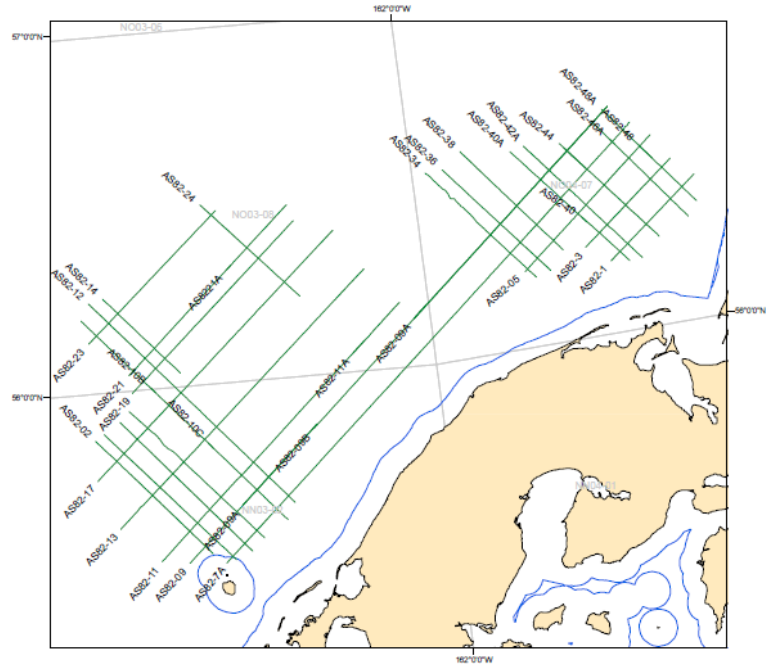
Type Data: 2D Marine

Survey Dates: May 1 –September 15, 1982

Quantity Data Available: Approximately 1193 miles of multi-channel seismic reflection data on the North Aleutian OCS Planning area

Under the conditions of the Permit, acquisition contract, and subsequent regulations, the OCS portions of these data acquired by the MMS (now the Bureau of Ocean Energy Management, BOEM) are now available to the public through the U. S. Geological Survey on the National Archive of Marine Seismic Surveys web site.

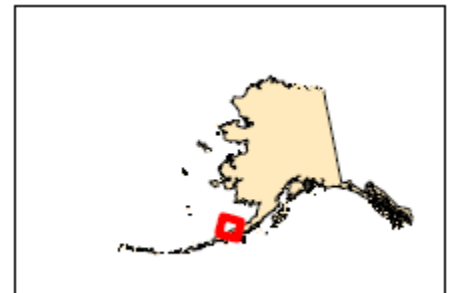
Energy source: Airgun



### Description of Data or Information:

- The seismic reflection profiles processed as stack and migrated section scanned at 800 DPI to TIFF images
- The seismic data formatted as segy
- Velocity in ASCII text files
- Navigation in ASCII text file, NAD83

Contact: For further information or expressions of interest in acquiring the data please go to the USGS National Archive of Marine Seismic Surveys web site (<http://walrus.wr.usgs.gov/NAMSS/>) or



Susan Banet

Bureau of Ocean Energy Management

3801 Centerpoint Drive, Suite 500

Anchorage, Alaska 99503

Fax: (907) 334-5322

Phone: (907) 334-5323

All BOEM Alaska data release announcements may be found at <http://www.boem.gov/About-BOEM/BOEM-Regions/Alaska-Region/Resource-Evaluation/Released-Geological-and-Geophysical-Data/Index.aspx>