

Outer Continental Shelf Renewable Energy Leases

Map Book

March 2021

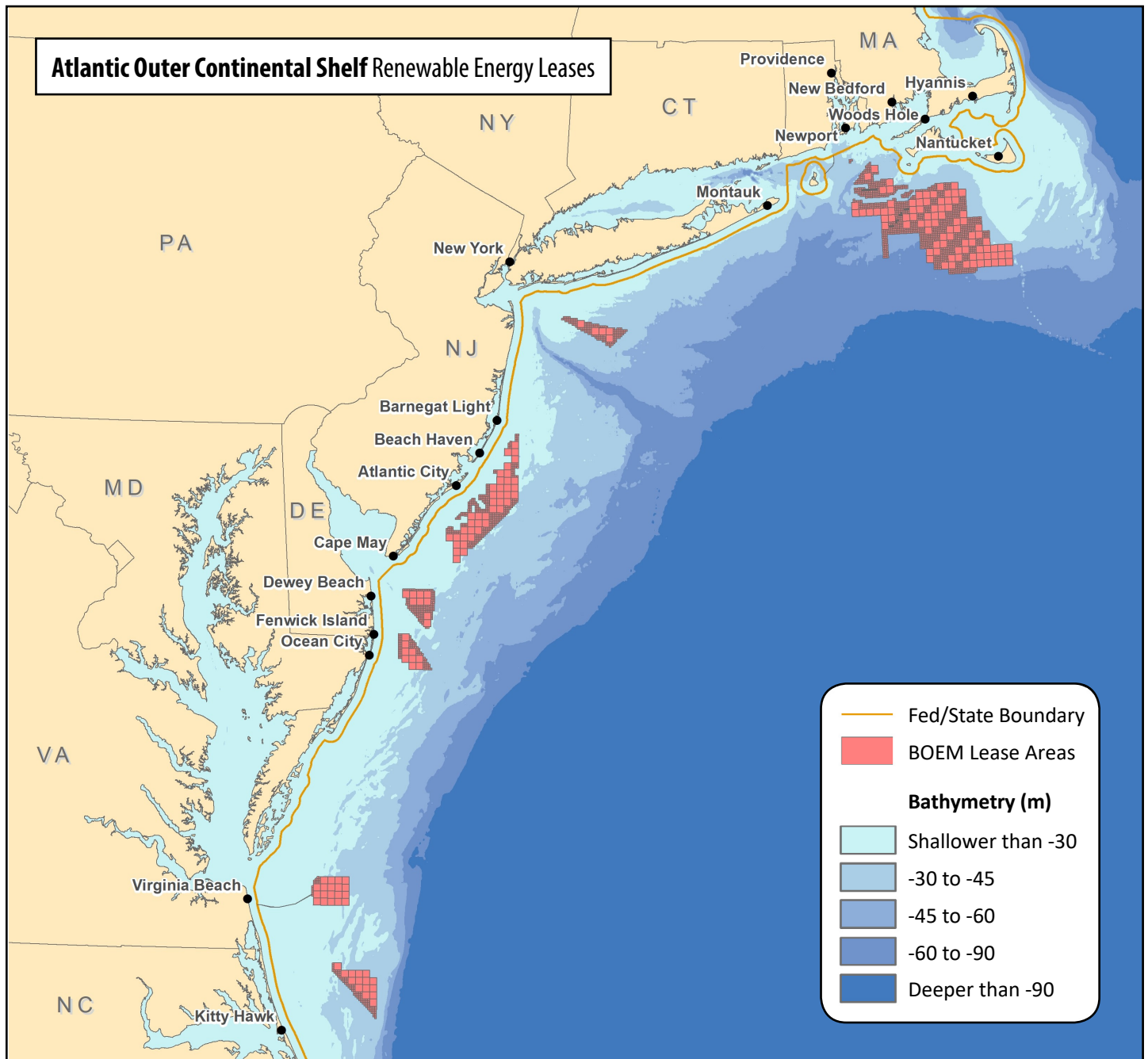


BOEM

BOEM's Renewable Energy Program

Department of the Interior's Bureau of Ocean Energy Management (BOEM) is responsible for overseeing offshore renewable energy development in Federal waters.

For more detailed information about the status and lineage of these activities, visit our website: www.boem.gov/Renewable-Energy-State-Activities



This book provides an overview of active commercial and research leases issued by BOEM to date. Each page is focused on a single lease and provides relevant statistics about the lease.

The following information regarding each lease is listed on the maps:

State: The state task force involved in the planning process

Lease Number: A unique alphanumeric number assigned by BOEM to manage lease documentation

Lessee: The company currently holding the lease

Lease Type: There are three possible types of leases: *Commercial, Research or Limited*

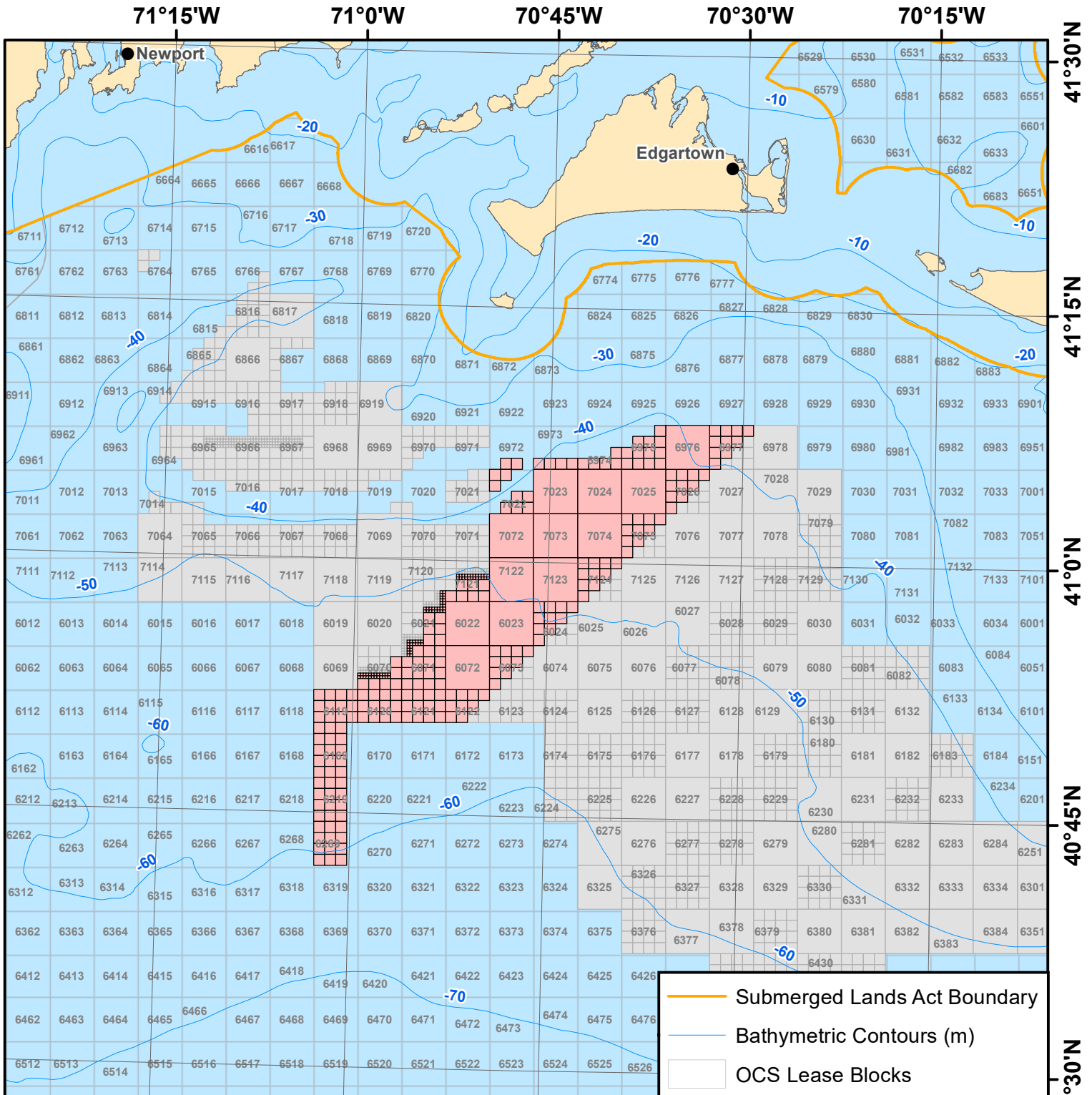
Lease Date: The effective date of the lease

Acres: The total acreage of the lease area

Table of Contents

| | |
|--|-----------|
| Massachusetts OCS-A 0500 | 4 |
| Massachusetts OCS-A 0501 | 5 |
| Massachusetts OCS-A 0530 | 6 |
| Massachusetts OCS-A 0520 | 7 |
| Massachusetts OCS-A 0521 | 8 |
| Massachusetts OCS-A 0522 | 9 |
| Rhode Island/Massachusetts OCS-A 0486 | 10 |
| Rhode Island/Massachusetts OCS-A 0487 | 11 |
| Rhode Island/Massachusetts OCS-A 0517 | 12 |
| New York OCS-A 0512 | 13 |
| New Jersey OCS-A 0499 | 14 |
| New Jersey OCS-A 0498 | 15 |
| Delaware OCS-A 0482 | 16 |
| Delaware OCS-A 0519 | 17 |
| Maryland OCS-A 0490 | 18 |
| Virginia OCS-A 0483 | 19 |
| Virginia OCS-A 0497 | 20 |
| North Carolina OCS-A 0508 | 21 |
| Oregon OCS-P 0560 | 22 |





State: Massachusetts

Lease Number: OCS-A 0500

Lessee: Bay State Wind LLC

Lease Type: Commercial

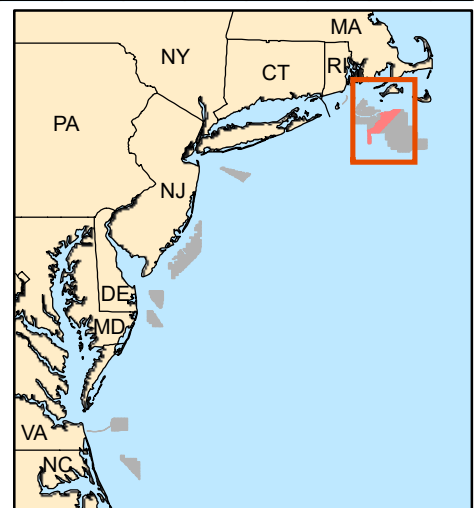
Lease Date: 4/1/2015

Acres: 144,842

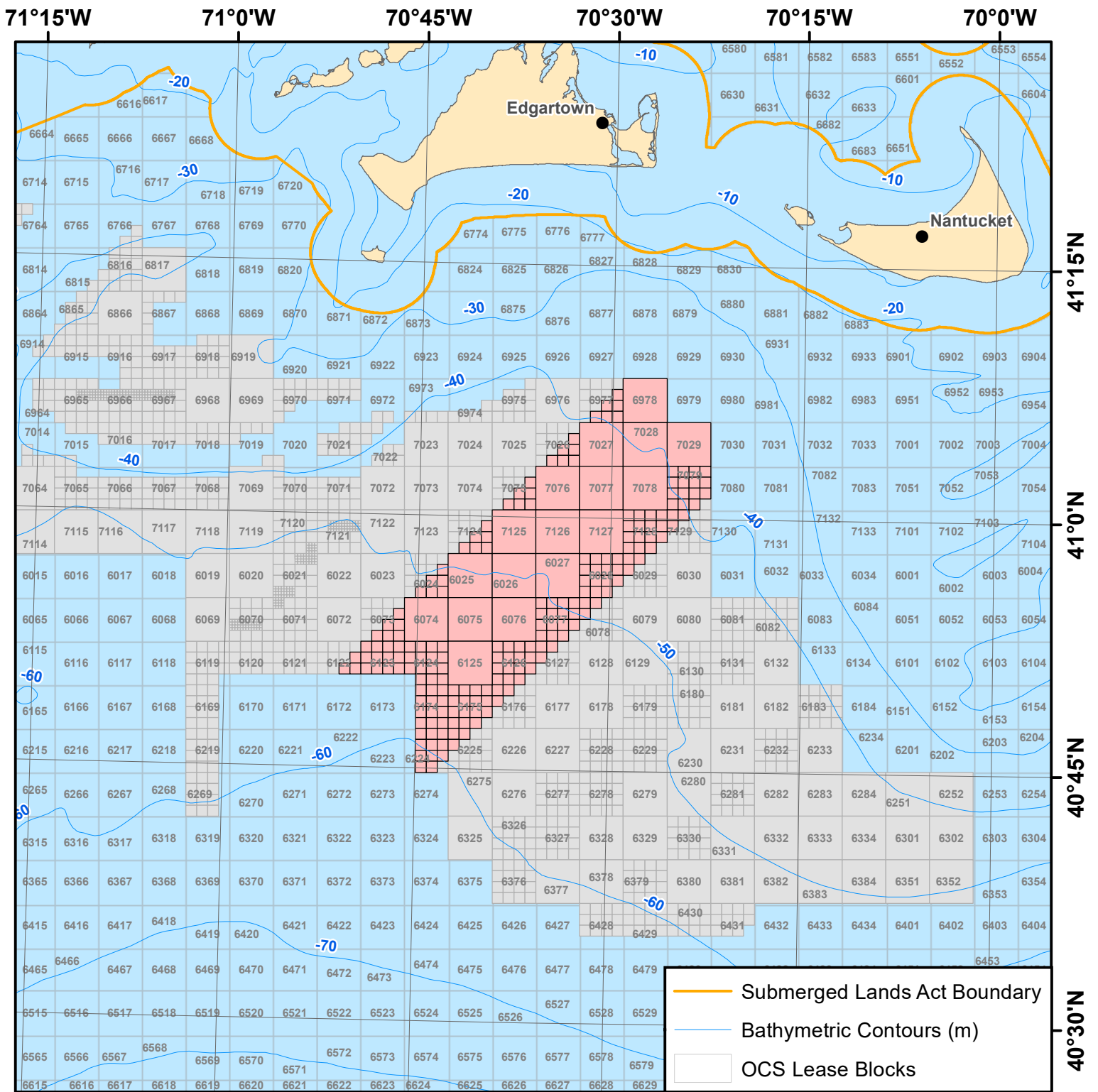
boem.gov/renewable-energy/state-activities/massachusetts-activities



Coordinate System: GCS North American 1983 UTM Zone 19T (Calculated)



41°30'N
41°15'N
41°0'N
40°45'N
40°30'N
March 2021 | 4



State: Massachusetts

Lease Number: OCS-A 0501

Lessee: Vineyard Wind LLC

Lease Type: Commercial

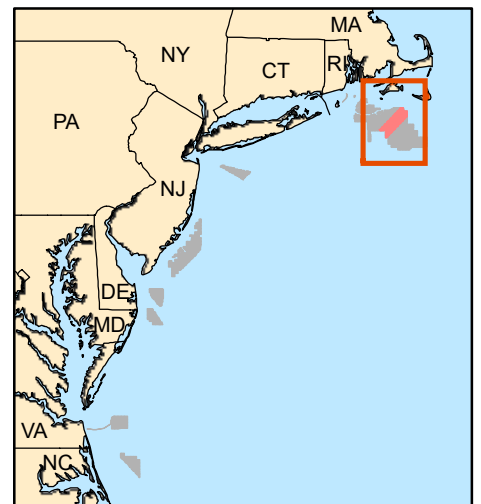
Lease Date: 4/1/2015

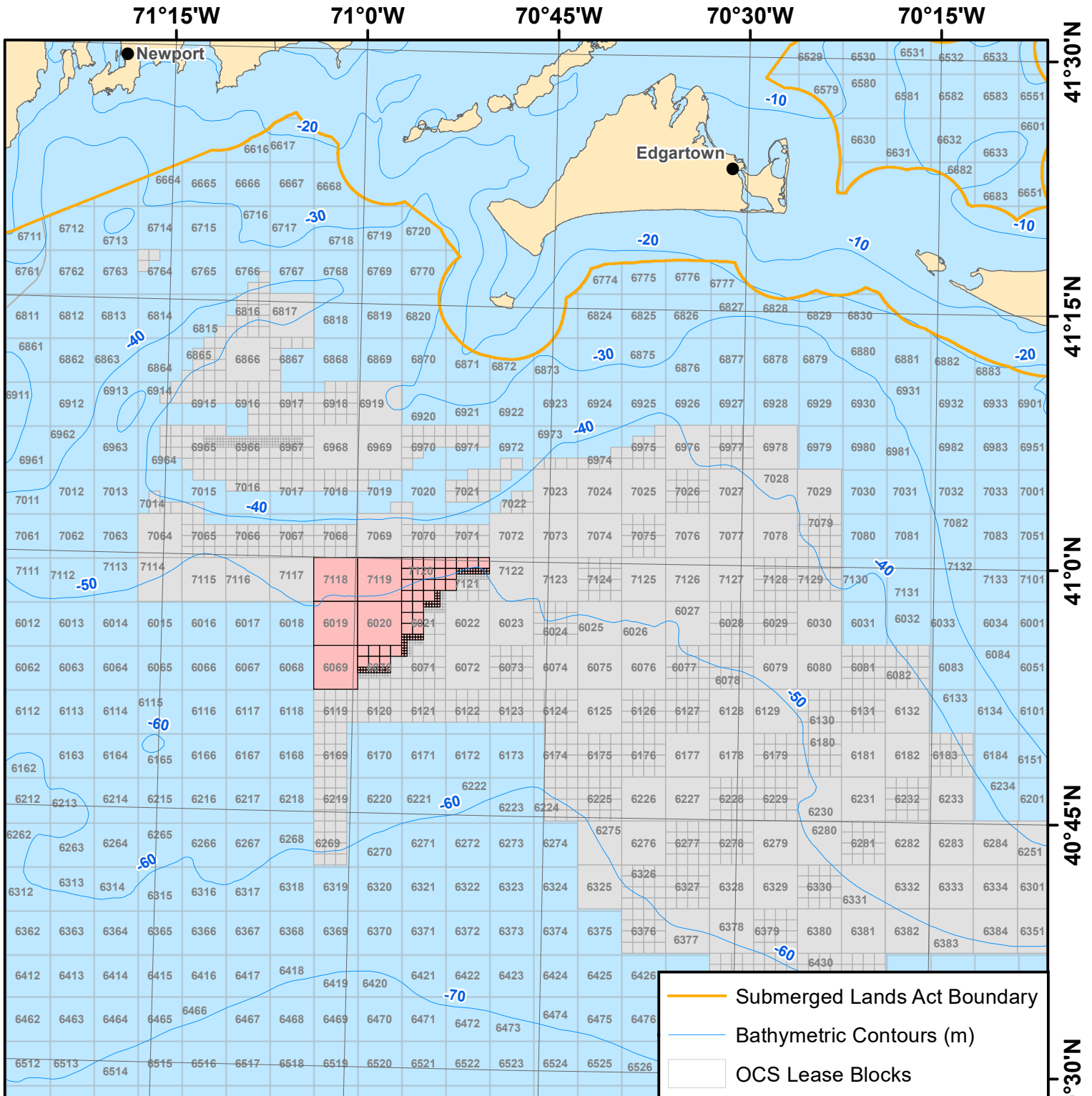
Acres: 166,886

boem.gov/renewable-energy/state-activities/massachusetts-activities



Coordinate System: GCS North American 1983 UTM Zone 19T (Calculated)





State: Massachusetts

Lease Number: OCS-A 0530

Lessee: Sunrise Wind LLC

Lease Type: Commercial

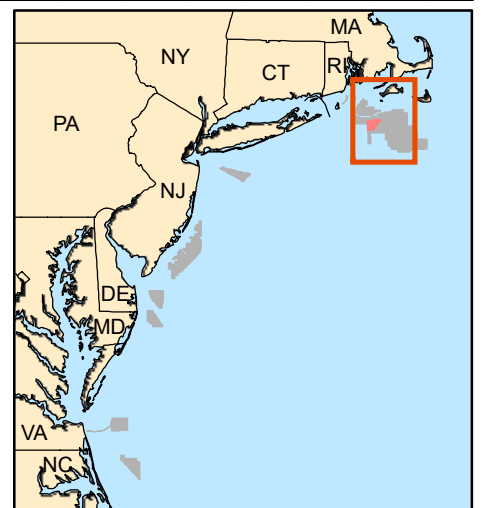
Lease Date: 4/1/2015

Acres: 42,681

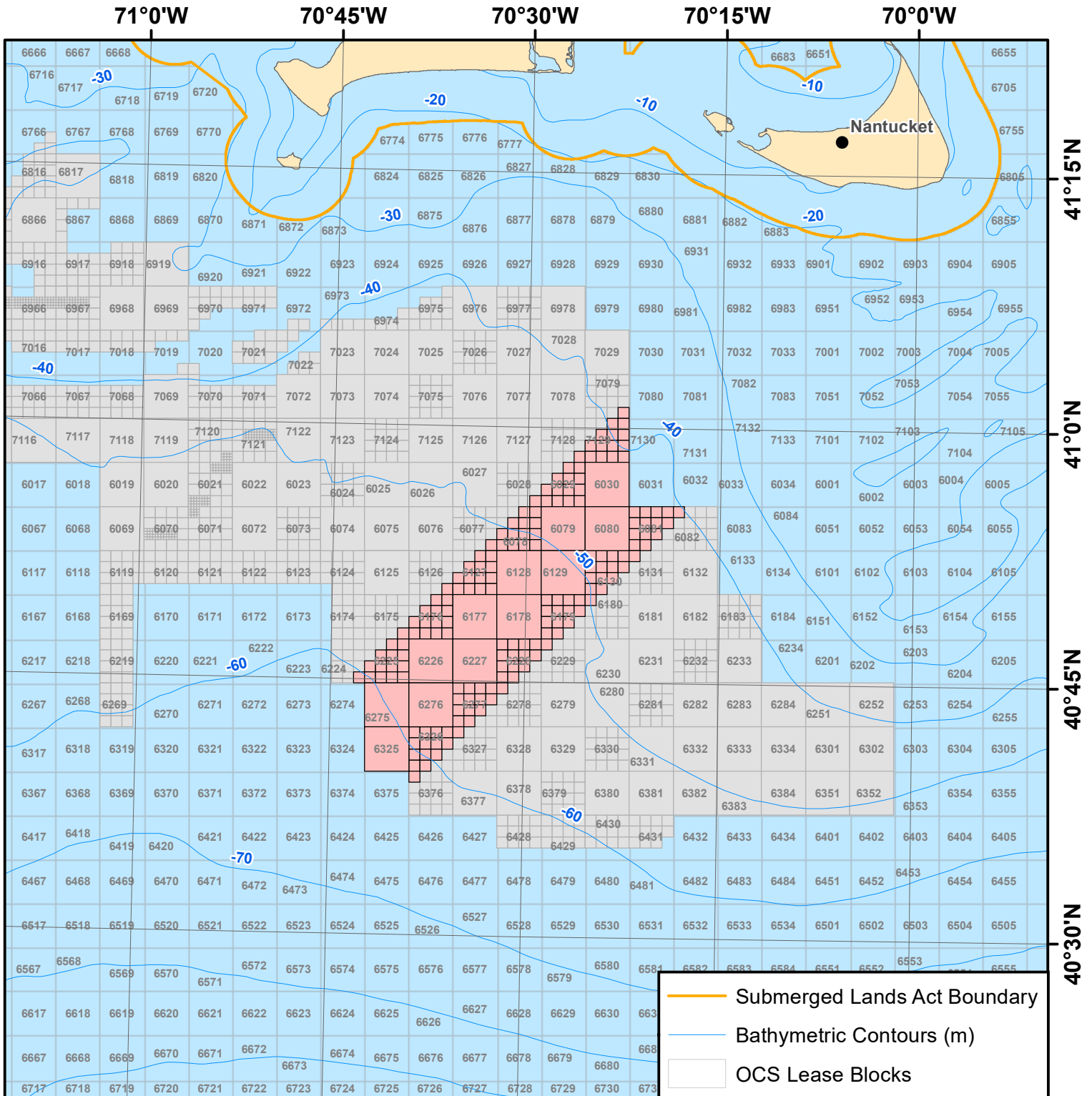
boem.gov/renewable-energy/state-activities/massachusetts-activities



Coordinate System: GCS North American 1983 UTM Zone 19T (Calculated)



41°30'N
41°15'N
41°0'N
40°45'N
40°30'N



State: Massachusetts

Lease Number: OCS-A 0520

Lessee: Beacon Wind LLC

Lease Type: Commercial

Lease Date: 4/1/2019

Acres: 128,811

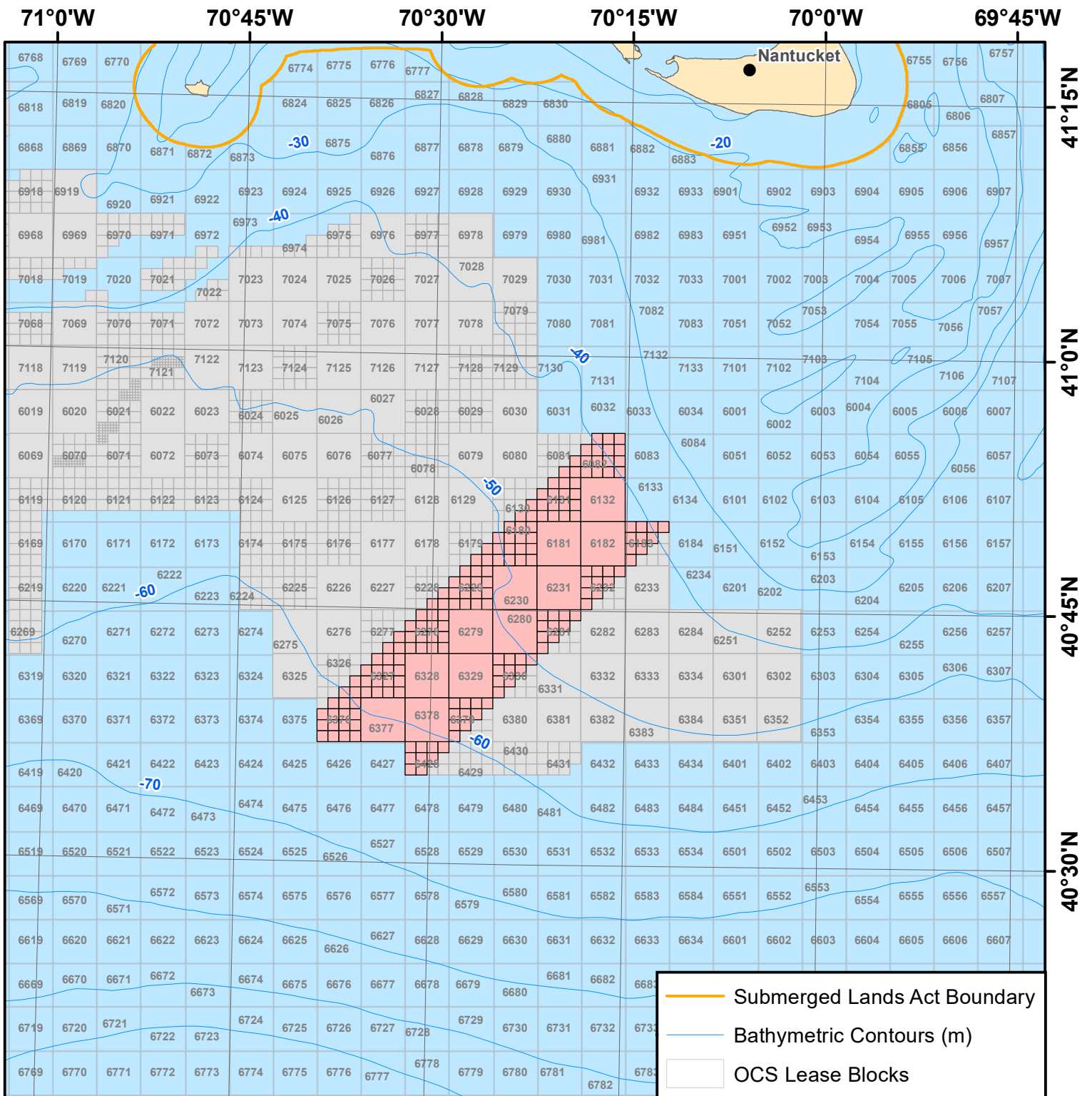
boem.gov/renewable-energy/state-activities/massachusetts-activities



Coordinate System: GCS North American 1983 UTM Zone 19T (Calculated)



41°15'N
41°0'N
40°45'N
40°30'N



State: Massachusetts

Lease Number: OCS-A 0521

Lessee: Mayflower Wind Energy, LLC

Lease Type: Commercial

Lease Date: 4/1/2019

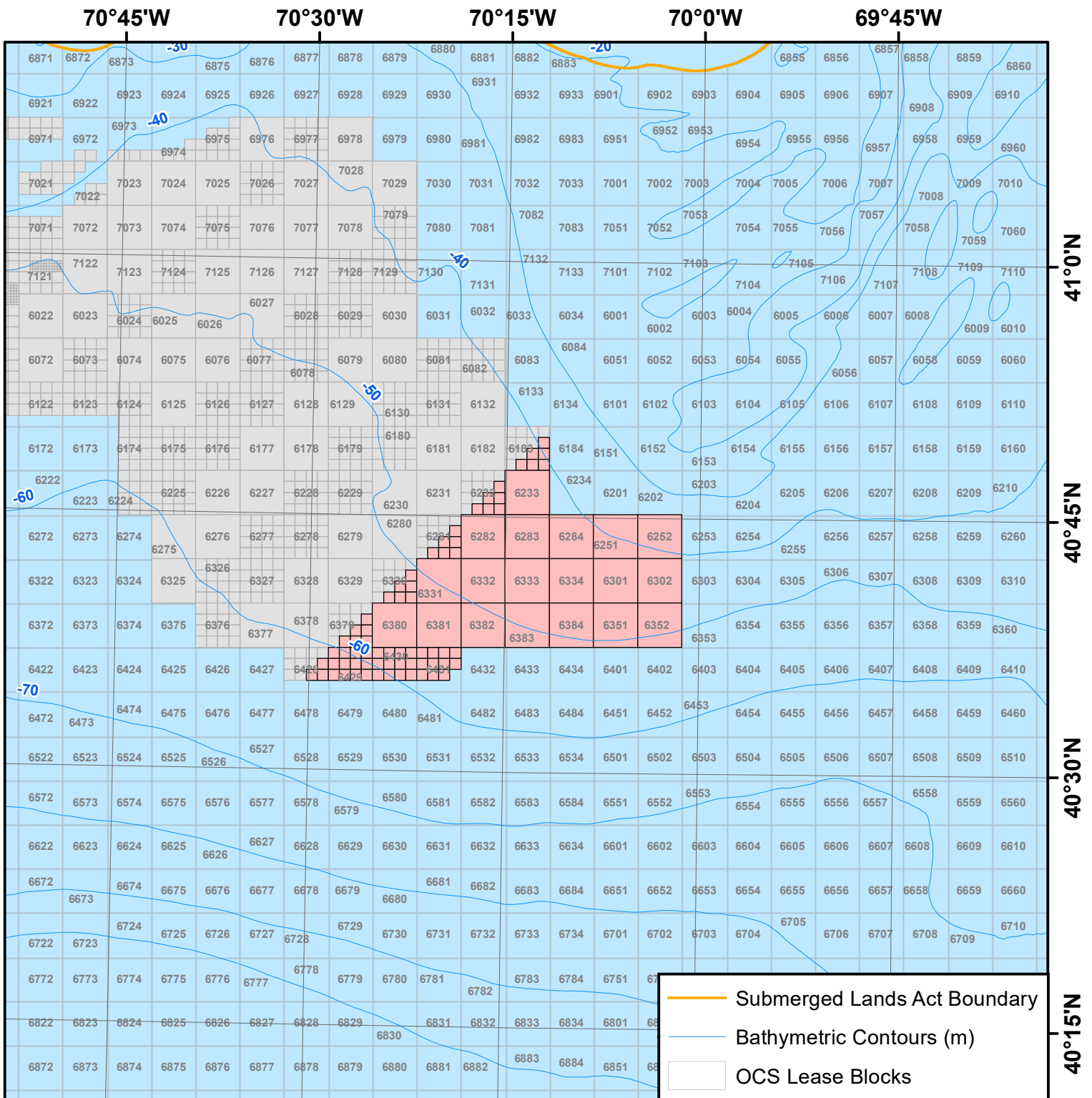
Acres: 127,388

boem.gov/renewable-energy/state-activities/massachusetts-activities



Coordinate System: GCS North American 1983 UTM Zone 19T (Calculated)





State: Massachusetts

Lease Number: OCS-A 0522

Lessee: Vineyard Wind LLC

Lease Type: Commercial

Lease Date: 4/1/2019

Acres: 132,370

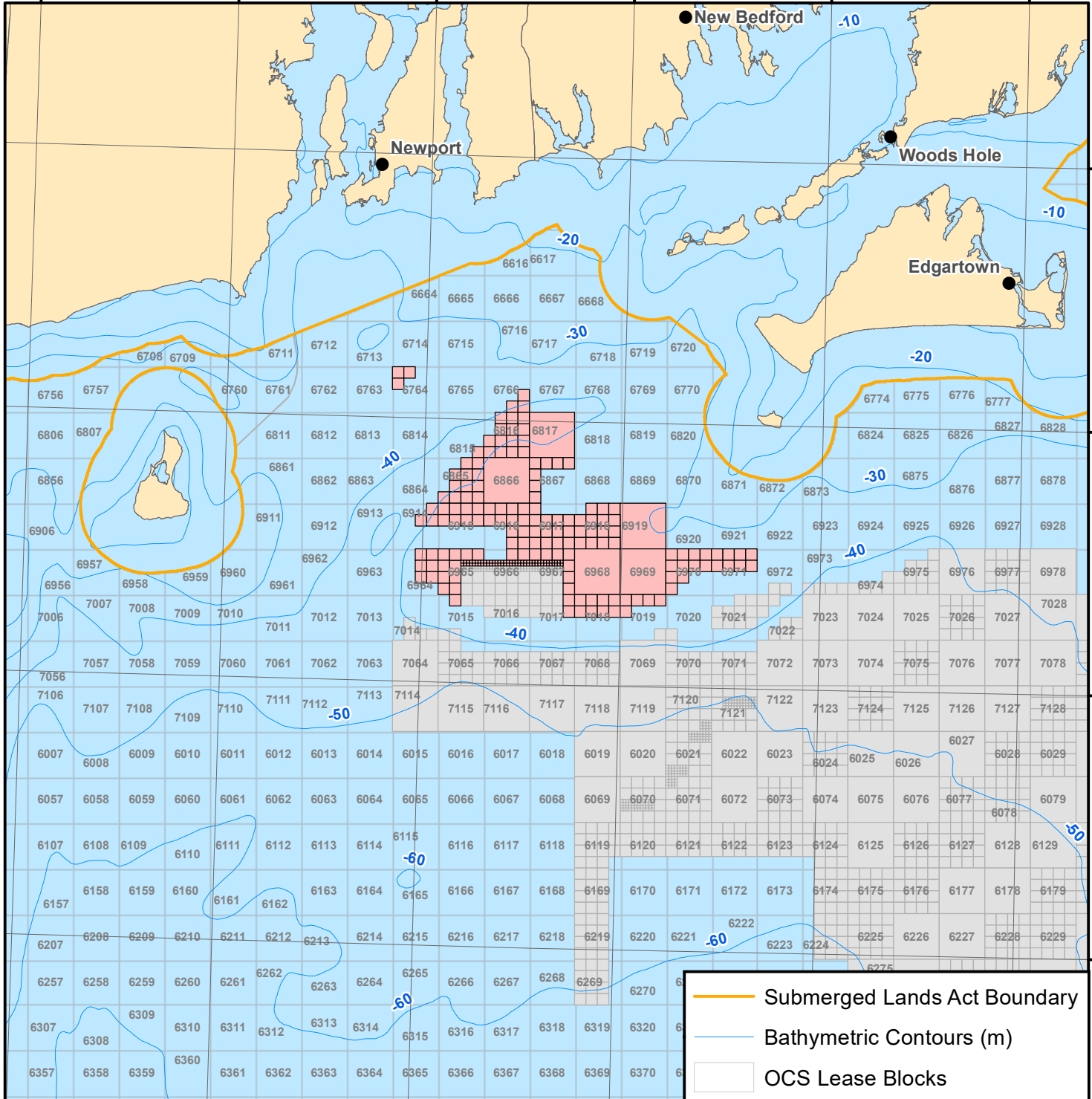
boem.gov/renewable-energy/state-activities/massachusetts-activities



Coordinate System: GCS North American 1983 UTM Zone 19T (Calculated)



71°45'W 71°30'W 71°15'W 71°0'W 70°45'W 70°30'W



- Submerged Lands Act Boundary
- Bathymetric Contours (m)
- OCS Lease Blocks

41°30'N
41°15'N
41°0'N
40°45'N

State: Rhode Island/Massachusetts

Lease Number: OCS-A 0486

Lessee: DWW Rev I, LLC

Lease Type: Commercial

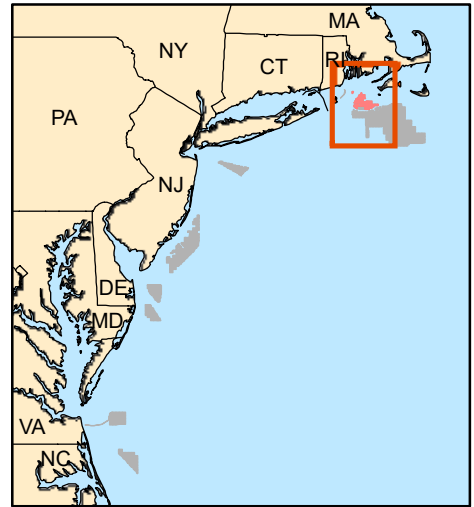
Lease Date: 10/1/2013

Acres: 83,798

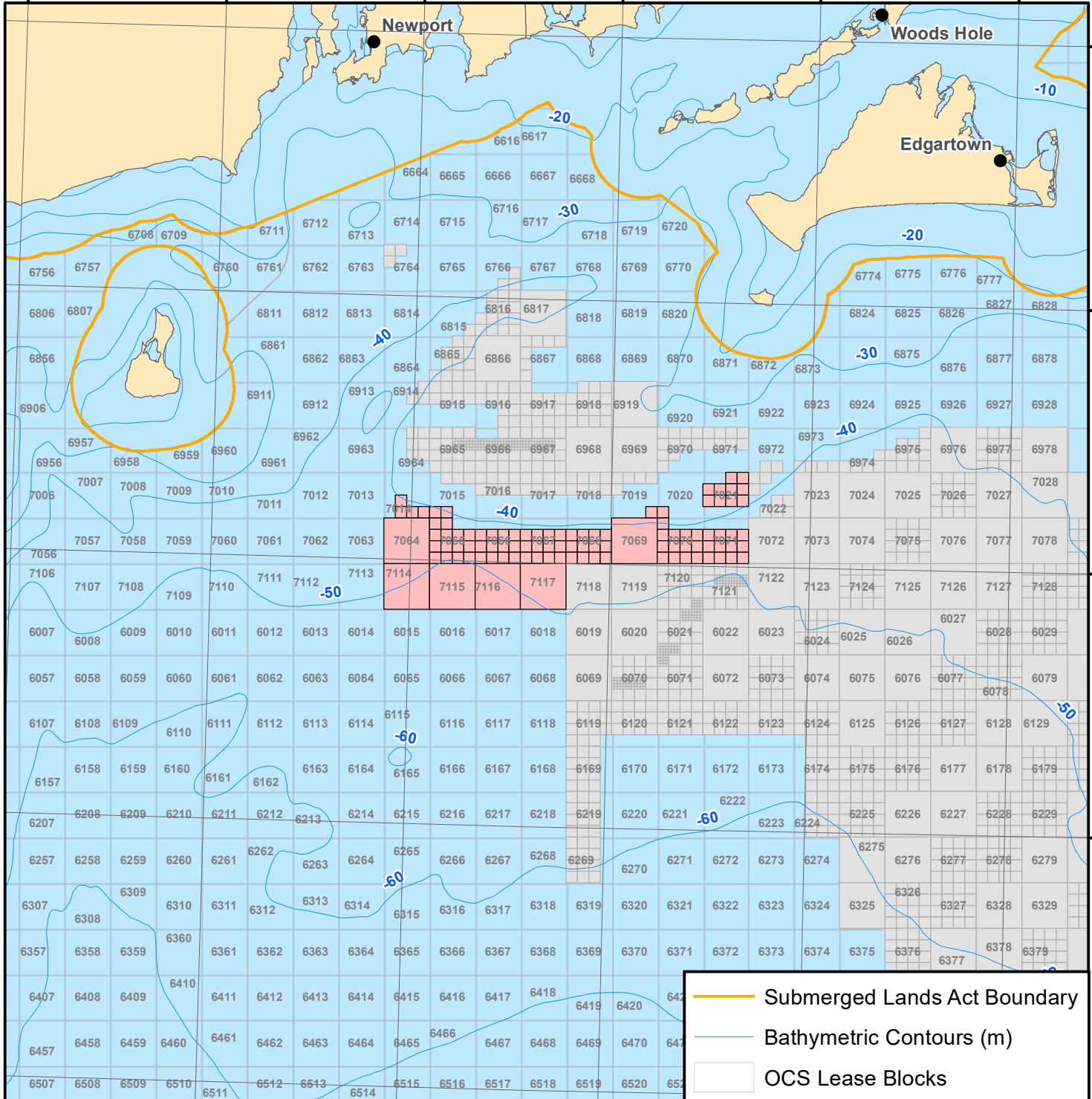
boem.gov/renewable-energy/state-activities/rhode-island-activities



Coordinate System: GCS North American 1983 UTM Zone 19T (Calculated)



71°45'W 71°30'W 71°15'W 71°0'W 70°45'W 70°30'W



41°30'N
41°15'N
41°0'N
40°45'N
40°30'N

- Submerged Lands Act Boundary
- Bathymetric Contours (m)
- OCS Lease Blocks

State: Rhode Island/Massachusetts

Lease Number: OCS-A 0487

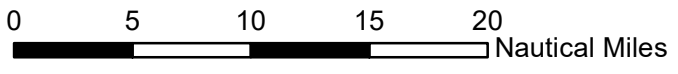
Lessee: Deepwater Wind New England, LLC

Lease Type: Commercial

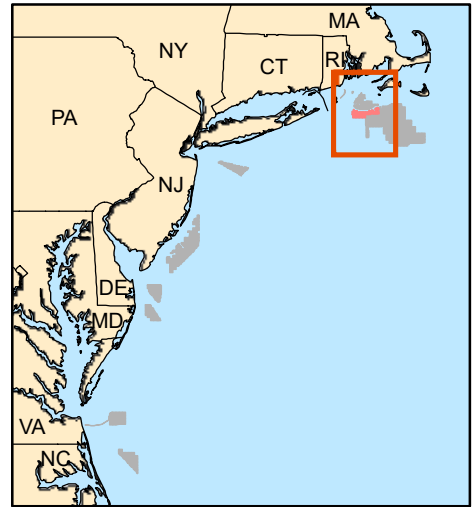
Lease Date: 10/1/2013

Acres: 67,252

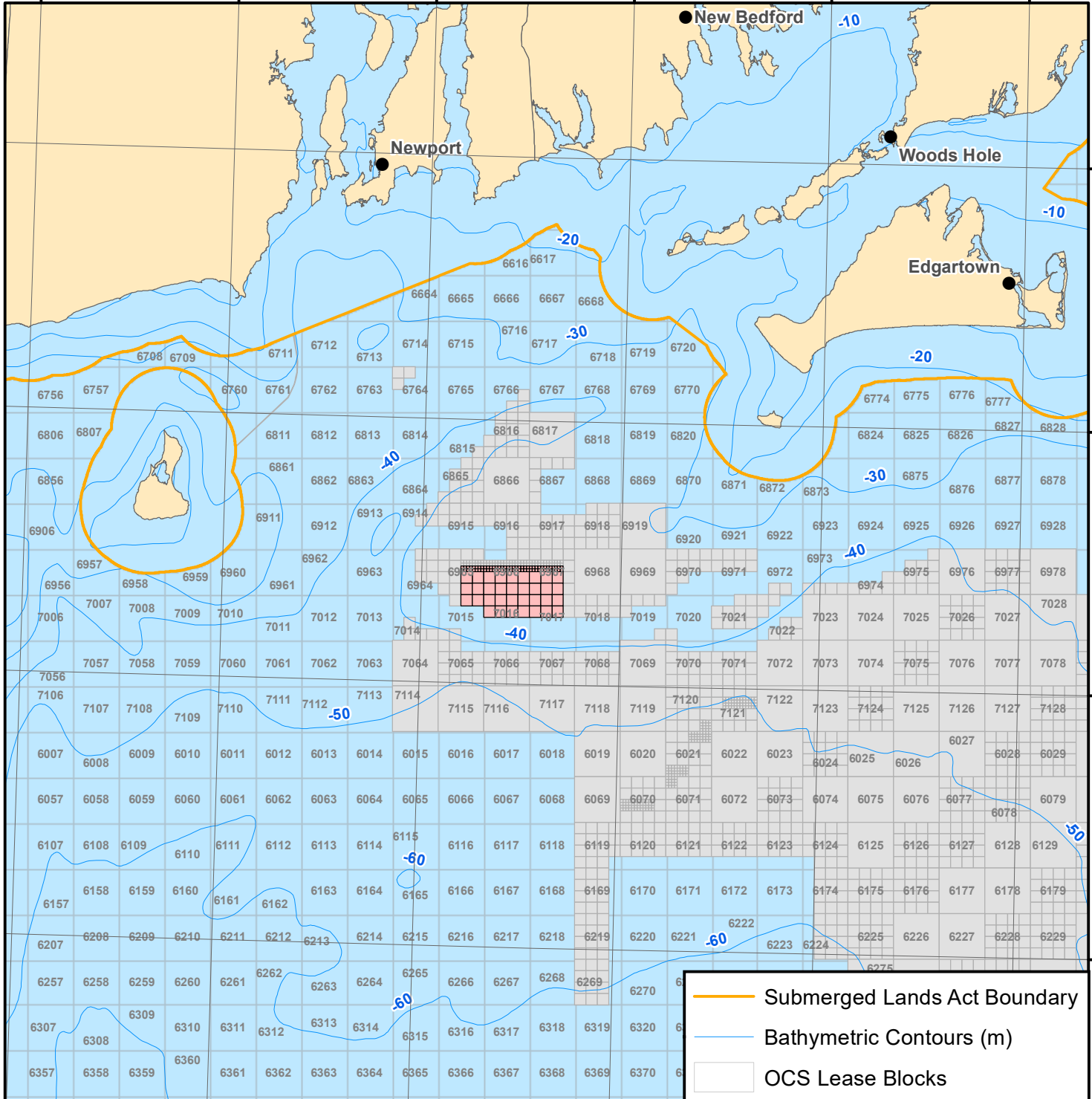
boem.gov/renewable-energy/state-activities/rhode-island-activities



Coordinate System: GCS North American 1983 UTM Zone 19T (Calculated)



71°45'W 71°30'W 71°15'W 71°0'W 70°45'W 70°30'W



41°30'N
41°15'N
41°0'N
40°45'N

State: Rhode Island/Massachusetts

Lease Number: OCS-A 0517

Lessee: Deepwater Wind South Fork, LLC

Lease Type: Commercial

Lease Date: 10/1/2013

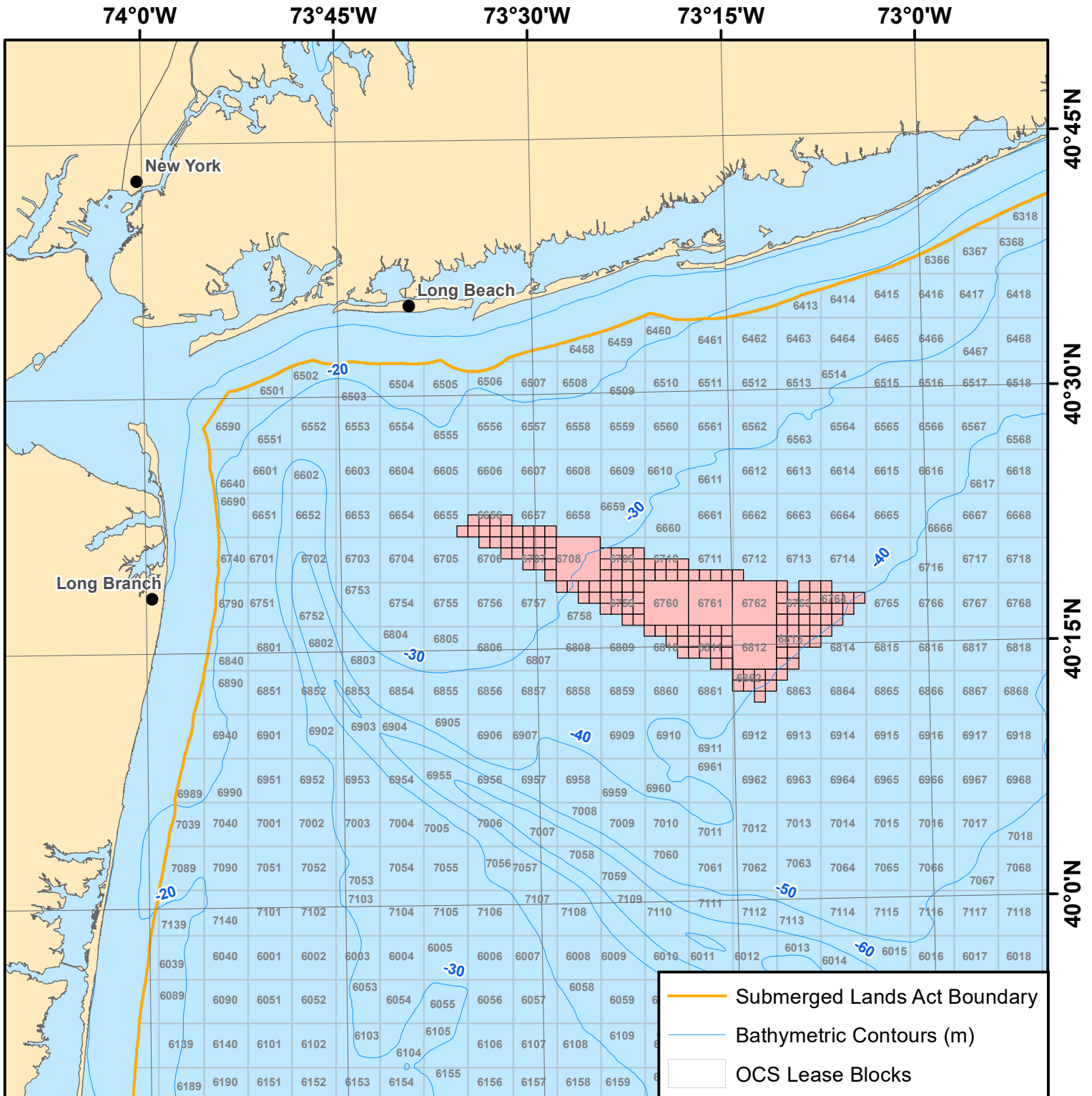
Acres: 13,700

boem.gov/renewable-energy/state-activities/rhode-island-activities



Coordinate System: GCS North American 1983 UTM Zone 19T (Calculated)





State: New York

Lease Number: OCS-A 0512

Lessee: Empire Offshore Wind LLC

Lease Type: Commercial

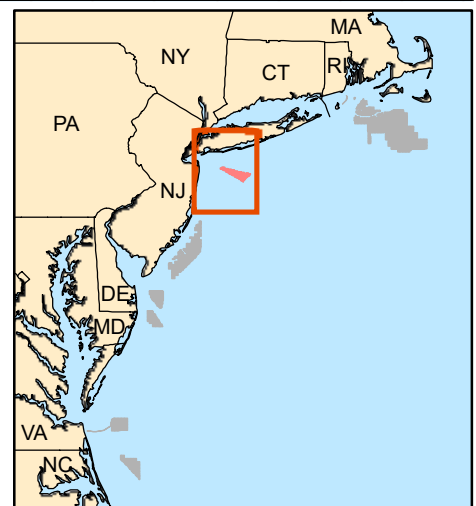
Lease Date: 4/1/2017

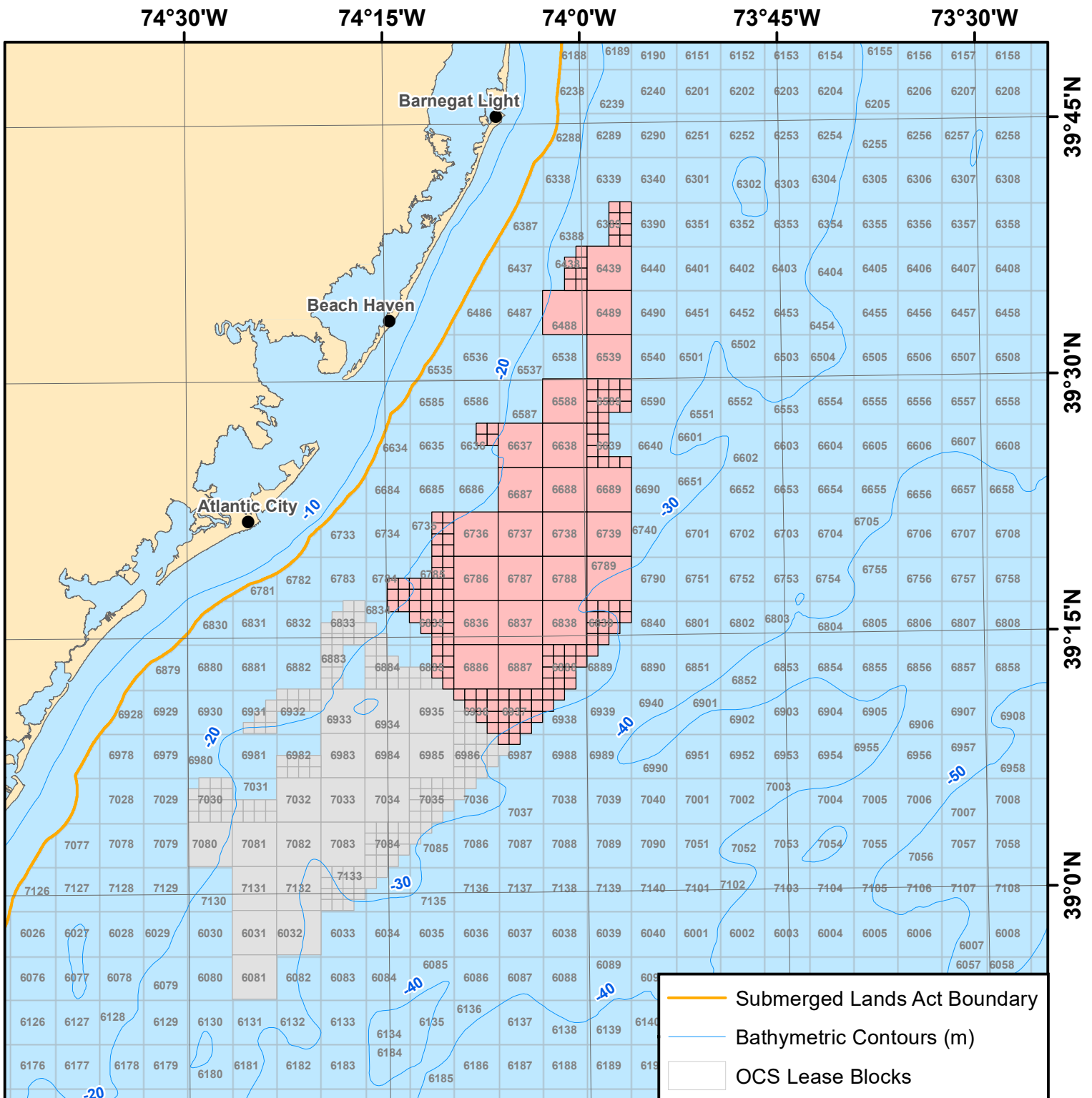
Acres: 79,350

[boem.gov/renewable-energy/state-activities/new-york-activities](https://www.boem.gov/renewable-energy/state-activities/new-york-activities)



Coordinate System: GCS North American 1983 UTM Zone 18T (Calculated)





State: New Jersey

Lease Number: OCS-A 0499

Lessee: Atlantic Shores Offshore Wind, LLC

Lease Type: Commercial

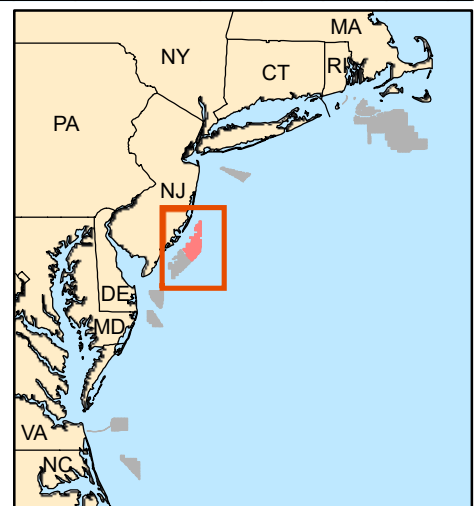
Lease Date: 3/1/2016

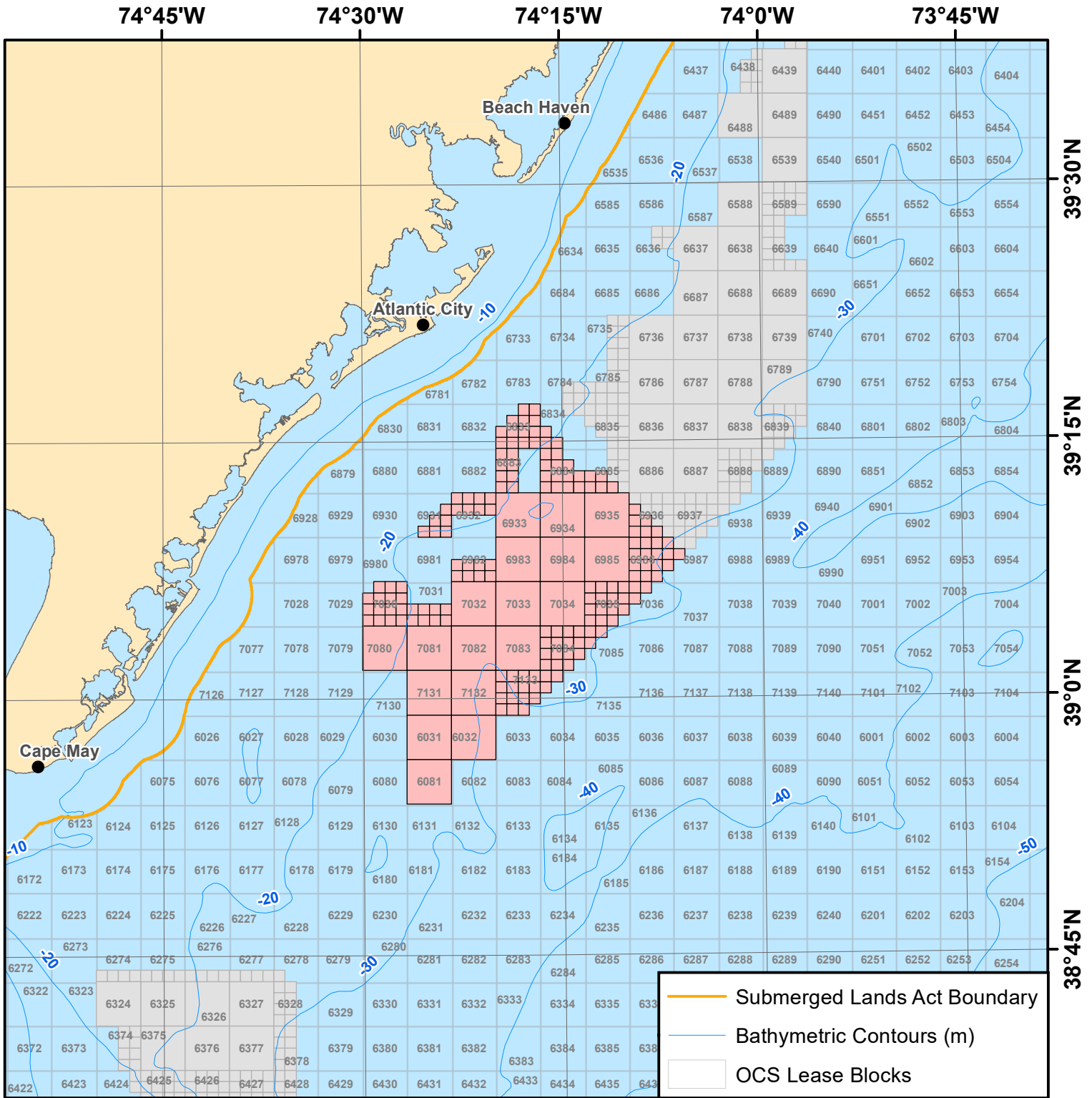
Acres: 183,353

boem.gov/renewable-energy/state-activities/new-jersey-activities



Coordinate System: GCS North American 1983 UTM Zone 18S (Calculated)





State: New Jersey

Lease Number: OCS-A 0498

Lessee: Ocean Wind LLC

Lease Type: Commercial

Lease Date: 3/1/2016

Acres: 160,480

boem.gov/renewable-energy/state-activities/new-jersey-activities

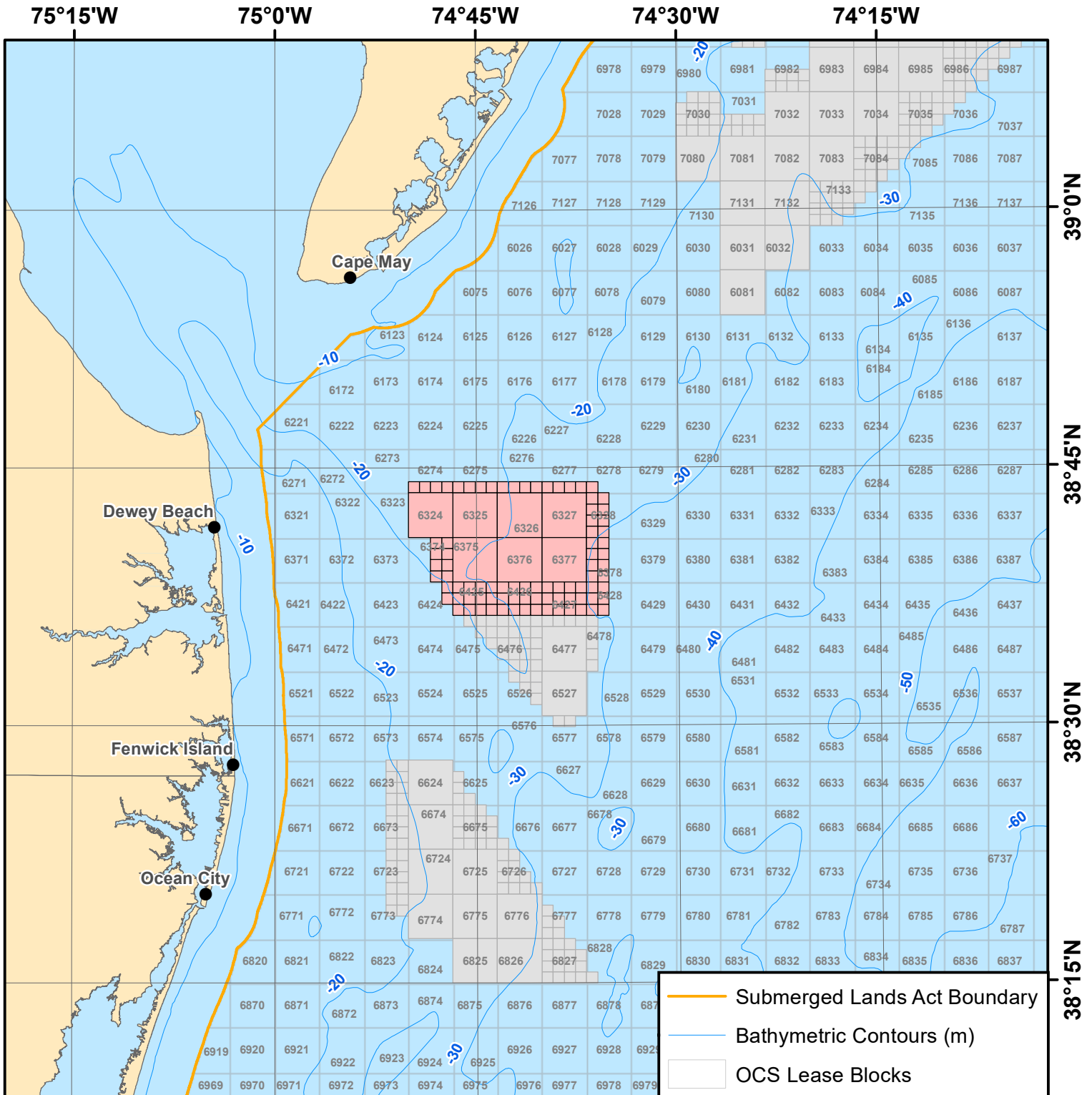


Coordinate System: GCS North American 1983 UTM Zone 18S (Calculated)



39°30'N
39°15'N
39°0'N
38°45'N

March 2021 | 15



State: Delaware

Lease Number: OCS-A 0482

Lessee: GSOE I, LLC

Lease Type: Commercial

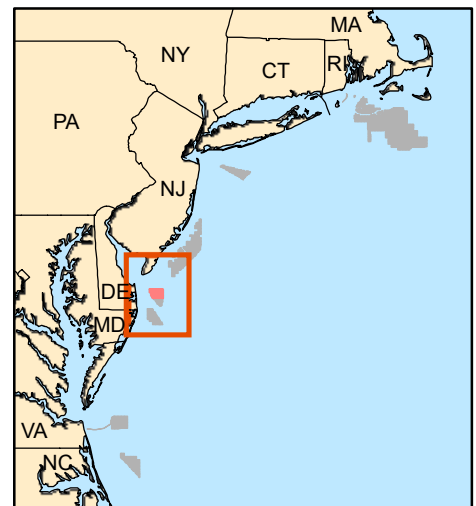
Lease Date: 12/1/2012

Acres: 70,098

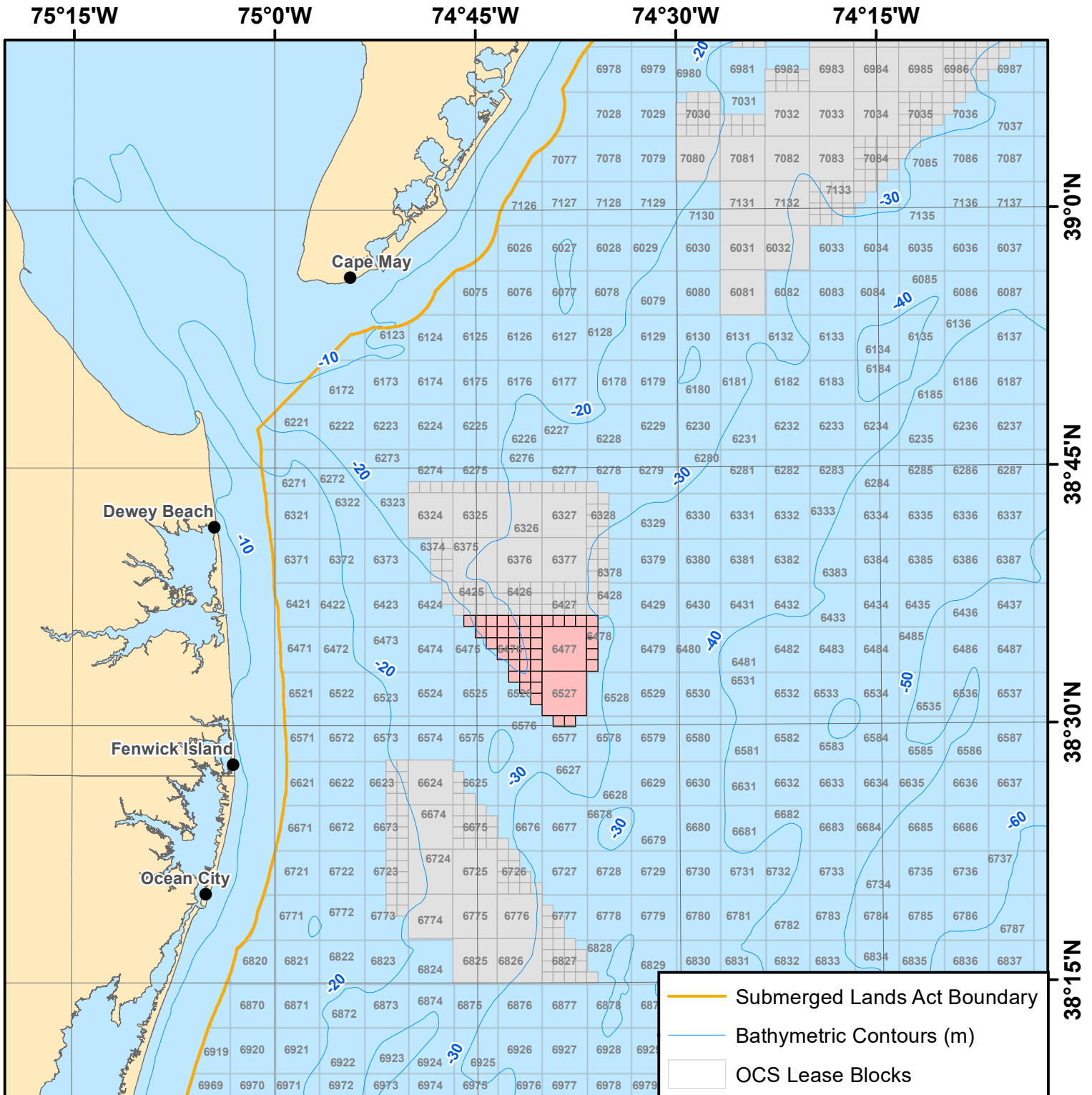
boem.gov/renewable-energy/state-activities/delaware-activities



Coordinate System: GCS North American 1983 UTM Zone 18S (Calculated)



39°0'N
38°45'N
38°30'N
38°15'N



State: Delaware

Lease Number: OCS-A 0519

Lessee: Skipjack Offshore Energy, LLC

Lease Type: Commercial

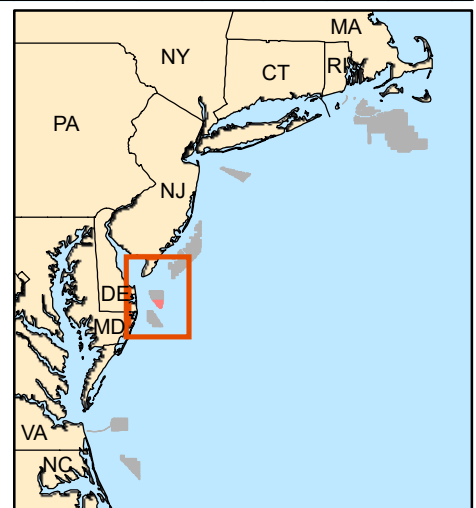
Lease Date: 12/1/2012

Acres: 26,332

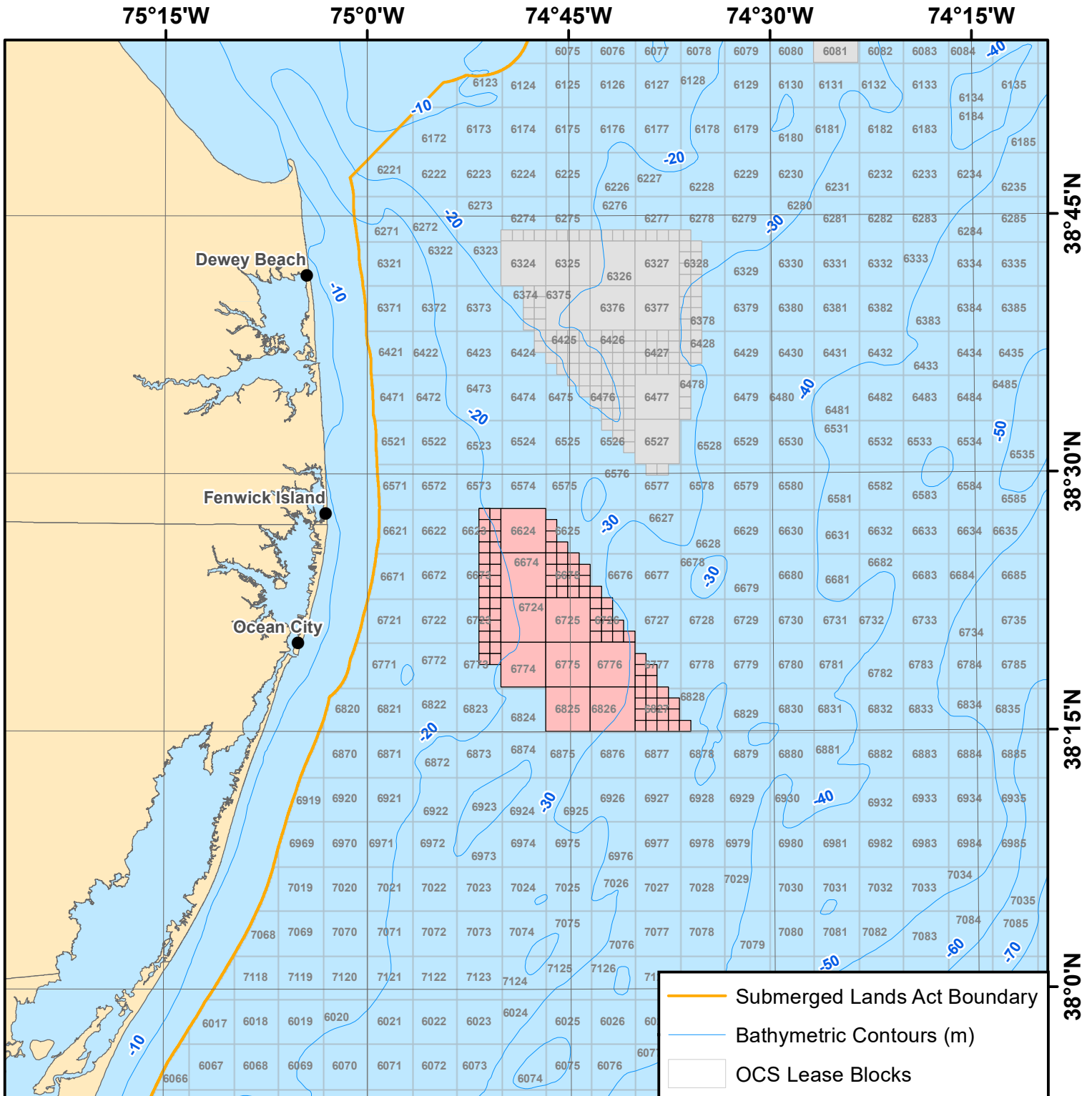
boem.gov/renewable-energy/state-activities/delaware-activities



Coordinate System: GCS North American 1983 UTM Zone 18S (Calculated)



39°0'N
38°45'N
38°30'N
38°15'N



State: Maryland

Lease Number: OCS-A 0490

Lessee: US Wind Inc.

Lease Type: Commercial

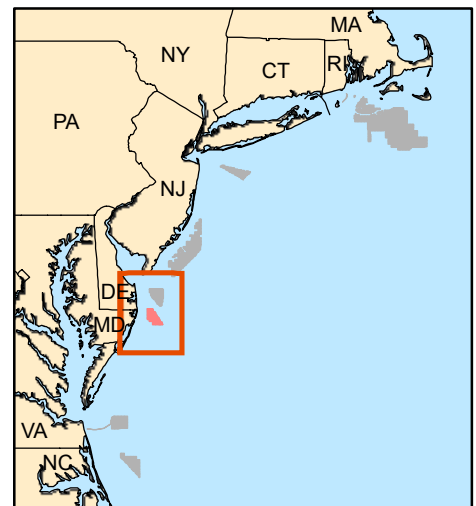
Lease Date: 12/1/2014

Acres: 79,707

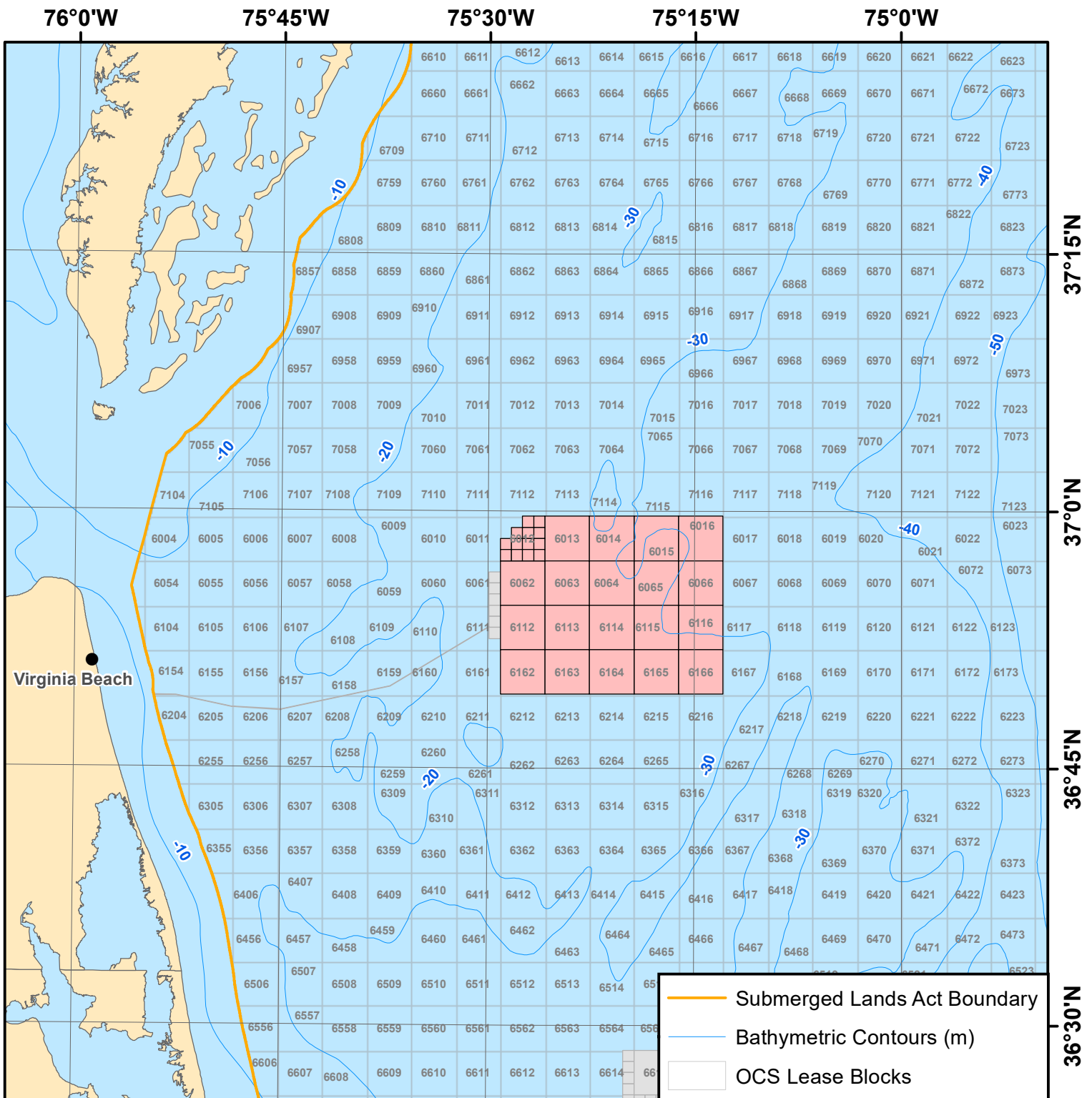
boem.gov/renewable-energy/state-activities/maryland-activities



Coordinate System: GCS North American 1983 UTM Zone 18S (Calculated)



38°45'N
38°30'N
38°15'N
38°0'N



State: Virginia

Lease Number: OCS-A 0483

Lessee: Virginia Electric and Power Company

Lease Type: Commercial

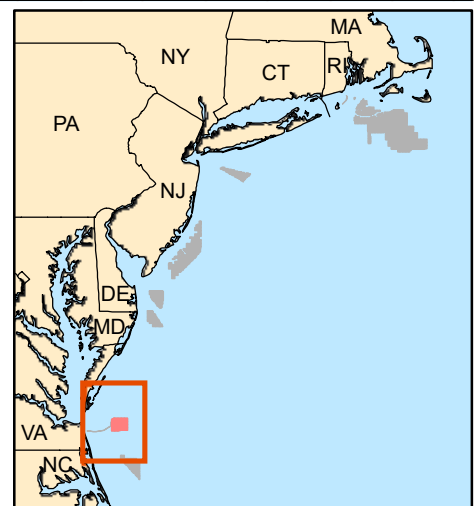
Lease Date: 11/1/2013

Acres: 112,799

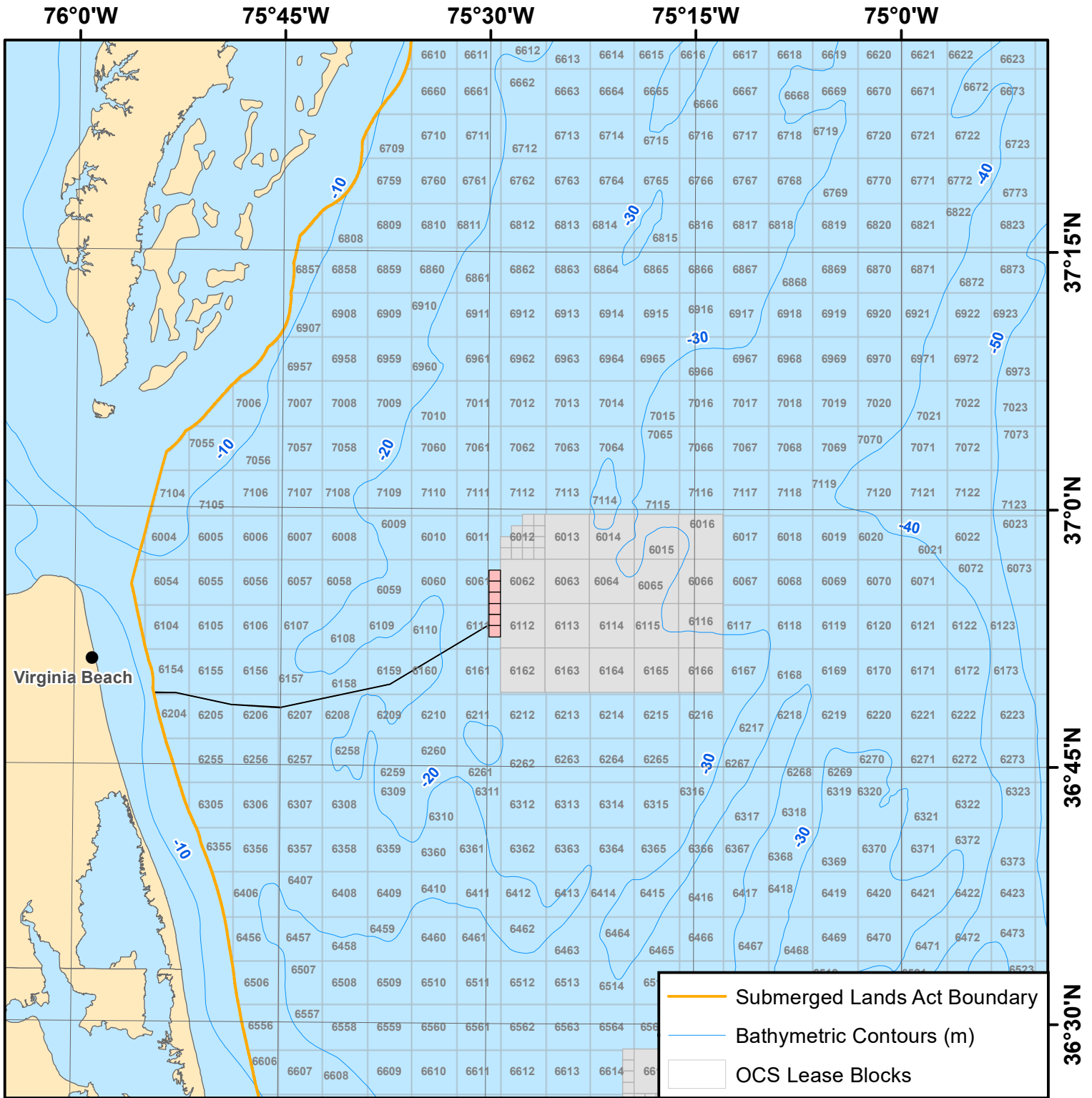
boem.gov/renewable-energy/state-activities/virginia-activities



Coordinate System: GCS North American 1983 UTM Zone 18S (Calculated)



37°15'N
37°0'N
36°45'N
36°30'N



State: Virginia

Lease Number: OCS-A 0497

Lessee: Commonwealth of Virginia Department of Mines, Minerals and Energy

Lease Type: Research

Lease Date: 4/1/2015

Acres: 2,135

[boem.gov/renewable-energy/state-activities/virginia-activities](https://www.boem.gov/renewable-energy/state-activities/virginia-activities)

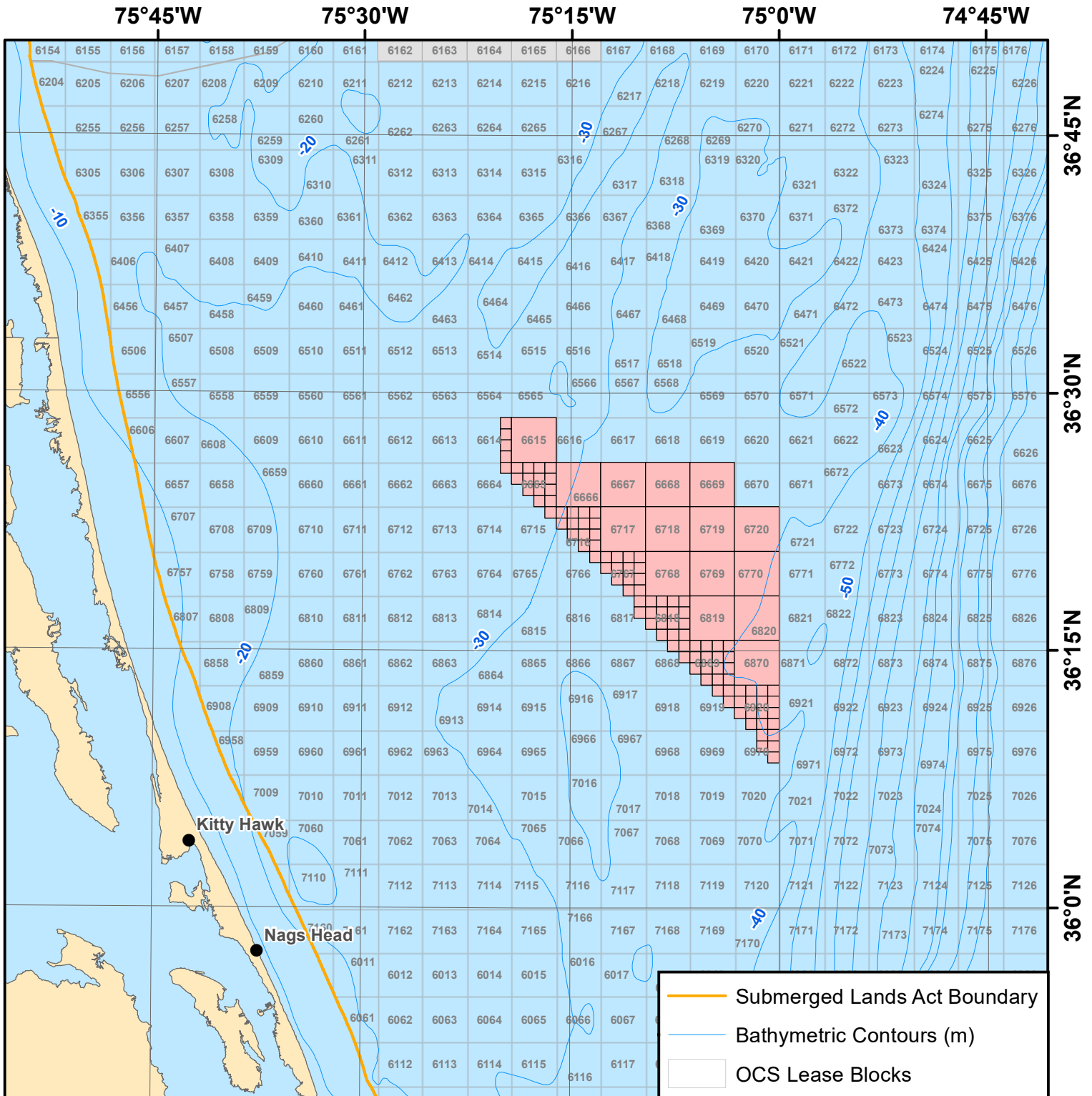


Coordinate System: GCS North American 1983 UTM Zone 18S (Calculated)



37°15'N
37°0'N
36°45'N
36°30'N

March 2021 | 20



State: North Carolina

Lease Number: OCS-A 0508

Lessee: Avangrid Renewables, LLC

Lease Type: Commercial

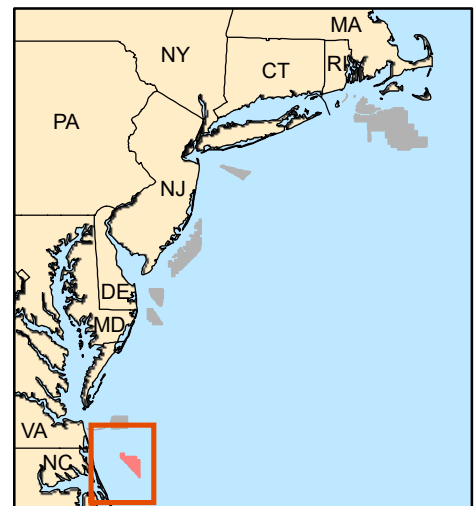
Lease Date: 11/1/2017

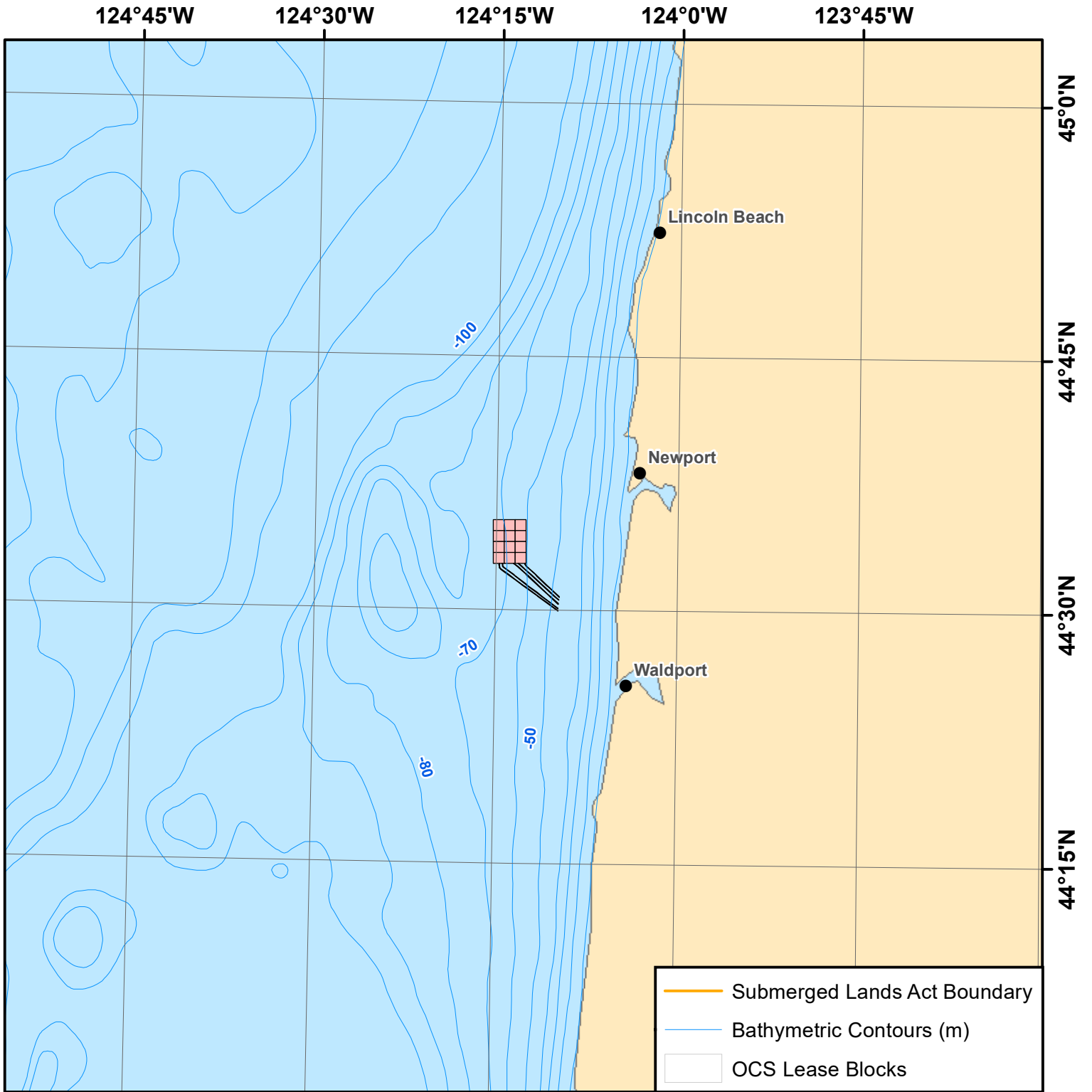
Acres: 122,405

boem.gov/renewable-energy/state-activities/north-carolina-activities



Coordinate System: GCS North American 1983 UTM Zone 18S (Calculated)





State: Oregon

Lease Number: OCS-P 0560

Lessee: Oregon State University

Lease Type: Research

Lease Date: 3/1/2021

Acres: 4,270

boem.gov/pacwave-south-project



Coordinate System: GCS North American 1983 UTM Zone 10T (Calculated)

