

KOP: Cape Ferrelo | Season: Spring | Time of Day: Morning

Base Photographic Documentation

Date (MM/DD/YYYY):	4/13/2023
Time (24hr):	9:16
GPS Longitude:	-124.3482476
GPS Latitude:	42.10375015
Viewpoint Elevation (ft):	254.6227
Camera Height (ft):	5.41
Camera Heading:	W

Turbine Information

Distance to Nearest Turbine (Miles):	20.71
Number of Turbines:	262
Hub Height (ft):	725
Support Structure Height (ft):	106
Rotor Diameter (ft):	935
Total Height to Tip of Blade (ft):	1,171

Image Preview



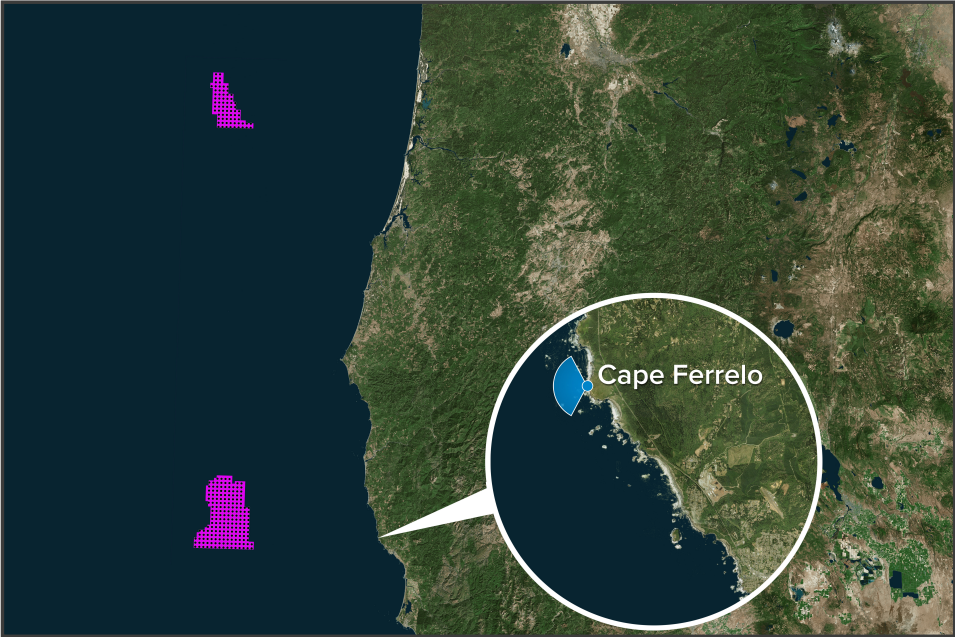
Camera Information

Camera Make & Model:	Canon EOS 5DS R
Camera Sensor Size:	36mm x 24mm
Lens Make & Model:	Sigma F1.4 DG HSM A031
Lens Focal Length:	20mm
Field of View:	65.47ø (H) / 46.397ø (V)

Sun, Sky, and Weather Information

Sun Azimuth:	120.18
Sun Elevation:	37.8
Lighting Angle (On Turbines):	Left Lit
Weather Conditions:	Partly Cloudy
Predicted Visibility (Miles):	23.13
Temperature (°F):	47
Temperature (°C):	8
Humidity (%):	63
SQM Reading:	N/A

Context Map



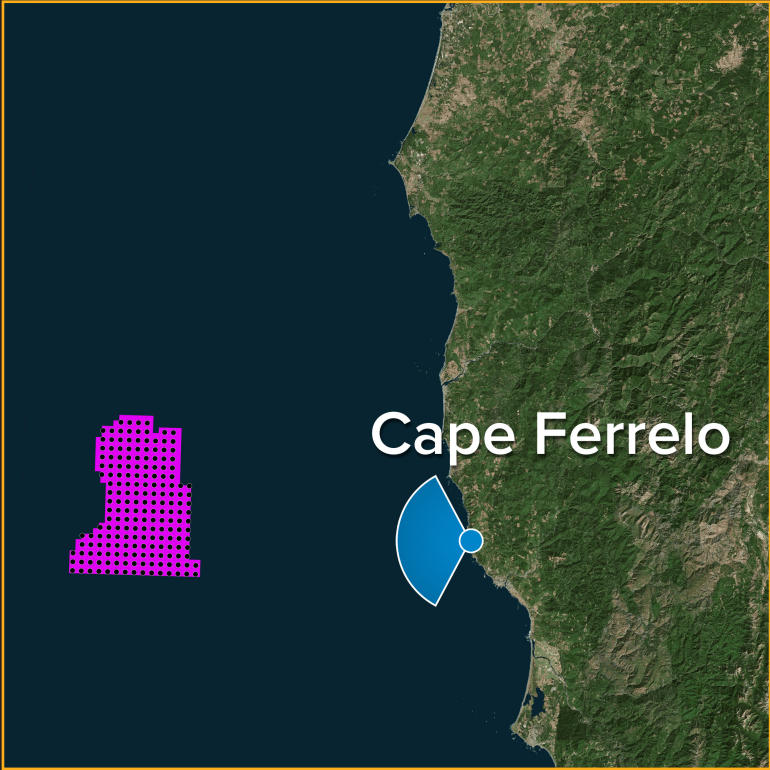
Viewing Instructions

For 11 x 17 inch Printed Display:	Viewing distance is 19.7 inches (500 mm)
For On-Screen Display:	Viewing distance is 19.7 inches (500 mm)



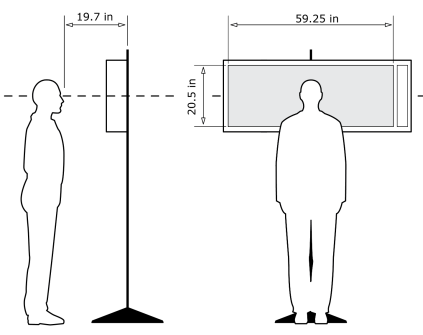
Cape Ferrello, Morning, Heading W - Existing View

For on-screen display:
Scale bar to be 4 inches wide
Viewing distance 19.7 inches



Latitude: 42.10375015
Longitude: -124.3482476
Elevation of Viewpoint Position: 254.6227
Height of Camera Above Ground: 5.41 ft
Date of Photography: 4/13/2023 at 9:16
Horizontal Field of View: 124°
Vertical Field of View: 55°

CORRECT VIEWING OF TRUEVIEW™ PHOTO SIMULATIONS



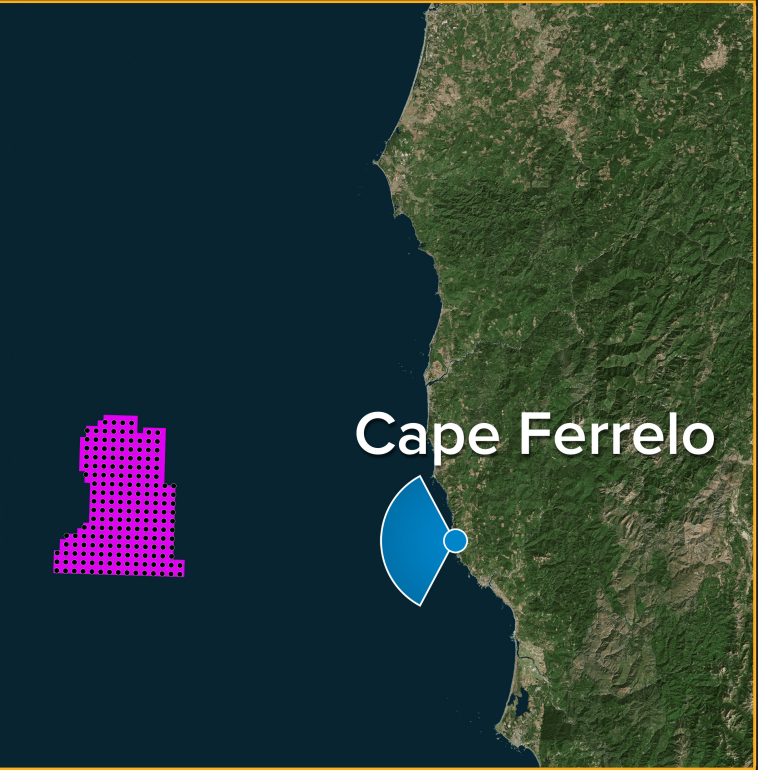
NOTES:
Viewpoint locations have been precision surveyed by
Surveyor:
Westland Resources
Engineering & Environmental Services Inc.
Portland, OR
(971) 256-0046
Heights are above mean sea level.
Structure design and placement are subject to final engineering.
No part of this photo simulation shall be altered in any way.

Photo Simulation Created Using
TrueView™ Technology
(Patent No.: US 6,184,906 B2)
Provided by



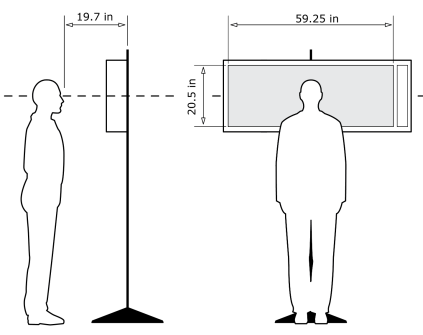
Cape Ferrello, Morning, Heading W - **Proposed View** - Predicted Visibility

For on-screen display:
Scale bar to be 4 inches wide
Viewing distance 19.7 inches



Latitude: 42.10375015
Longitude: -124.3482476
Elevation of Viewpoint Position: 254.6227
Height of Camera Above Ground: 5.41 ft
Date of Photography: 4/13/2023 at 9:16
Horizontal Field of View: 124°
Vertical Field of View: 55°

CORRECT VIEWING OF TRUEVIEW™ PHOTO SIMULATIONS



NOTES:
Viewpoint locations have been precision surveyed by
Surveyor:
Westland Resources
Engineering & Environmental Services Inc.
Portland, OR
(971) 256-0046
Heights are above mean sea level.
Structure design and placement are subject to final engineering.
No part of this photo simulation shall be altered in any way.

Photo Simulation Created Using
TrueView™ Technology
(Patent No.: US 6,184,906 B2)
Provided by

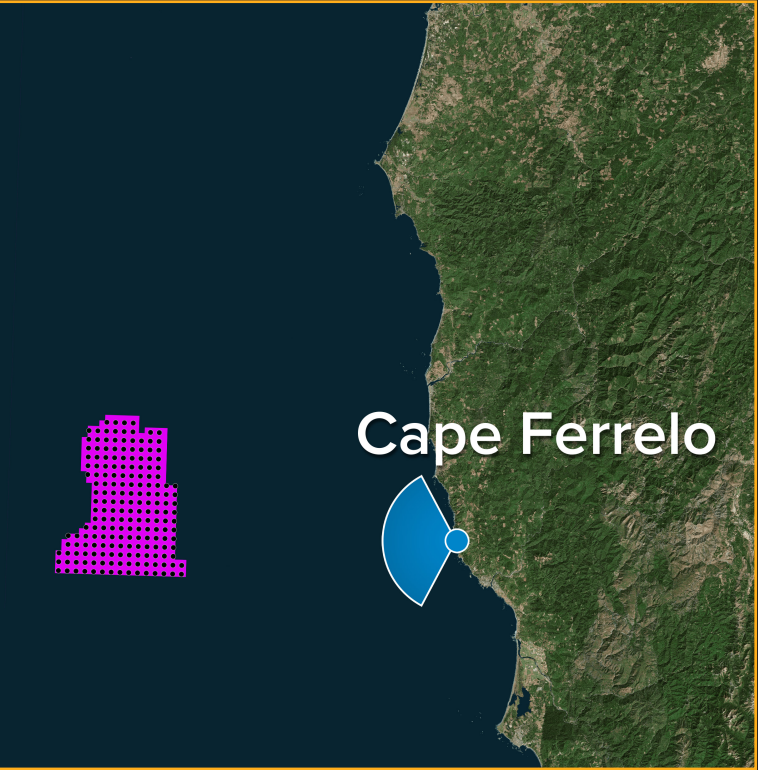


For on-screen display:
Scale bar to be 4 inches wide
Viewing distance 19.7 inches



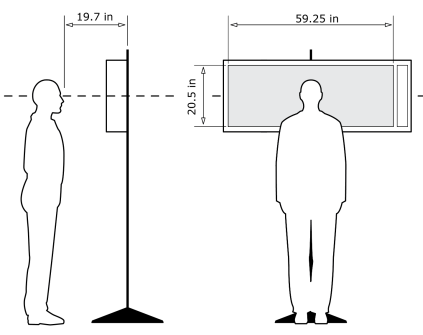
Cape Ferrello, Morning, Heading W - **Proposed View - Maximum Visibility**

For on-screen display:
Scale bar to be 4 inches wide
Viewing distance 19.7 inches



Latitude: 42.10375015
Longitude: -124.3482476
Elevation of Viewpoint Position: 254.6227
Height of Camera Above Ground: 5.41 ft
Date of Photography: 4/13/2023 at 9:16
Horizontal Field of View: 124°
Vertical Field of View: 55°

CORRECT VIEWING OF TRUEVIEW™ PHOTO SIMULATIONS



NOTES:
Viewpoint locations have been precision surveyed by
Surveyor:
Westland Resources
Engineering & Environmental Services Inc.
Portland, OR
(971) 256-0046
Heights are above mean sea level.
Structure design and placement are subject to final engineering.
No part of this photo simulation shall be altered in any way.

Photo Simulation Created Using
TrueView™ Technology
(Patent No.: US 6,184,906 B2)
Provided by



For on-screen display:
Scale bar to be 4 inches wide
Viewing distance 19.7 inches

KOP: Cape Ferrelo | Season: Spring | Time of Day: Noon

Base Photographic Documentation

Date (MM/DD/YYYY):	4/12/2023
Time (24hr):	12:16
GPS Longitude:	-124.3482476
GPS Latitude:	42.10375015
Viewpoint Elevation (ft):	254.6227
Camera Height (ft):	5.41
Camera Heading:	W

Turbine Information

Distance to Nearest Turbine (Miles):	20.71
Number of Turbines:	262
Hub Height (ft):	725
Support Structure Height (ft):	106
Rotor Diameter (ft):	935
Total Height to Tip of Blade (ft):	1,171

Image Preview



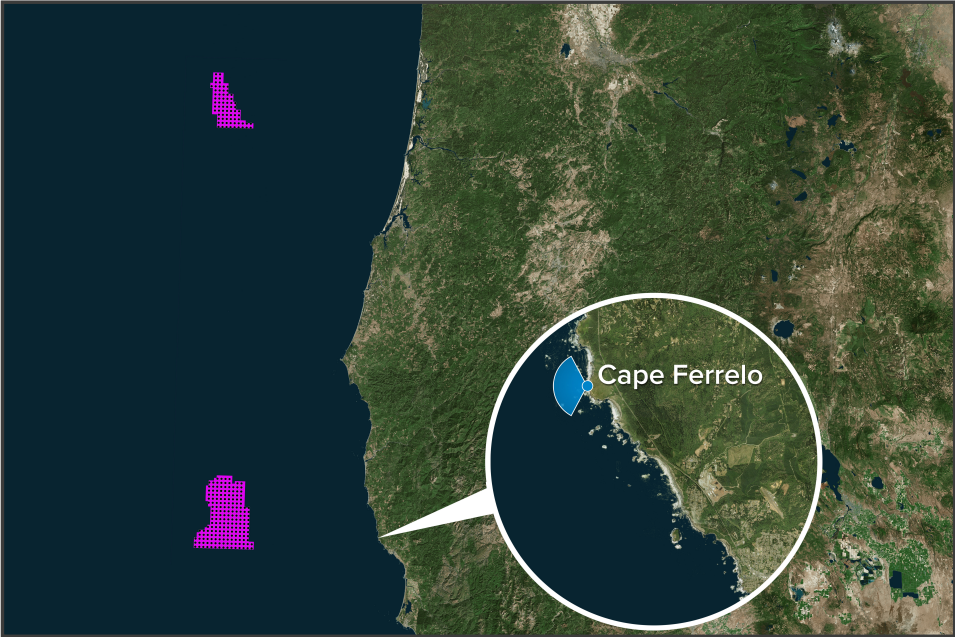
Camera Information

Camera Make & Model:	Canon EOS 5DS R
Camera Sensor Size:	36mm x 24mm
Lens Make & Model:	Sigma F1.4 DG HSM A032
Lens Focal Length:	20mm
Field of View:	65.47ø (H) / 46.397ø (V)

Sun, Sky, and Weather Information

Sun Azimuth:	181.92
Sun Elevation:	53.29
Lighting Angle (On Turbines):	Top-Left Lit
Weather Conditions:	Partly Cloudy
Predicted Visibility (Miles):	21.9
Temperature (°F):	50
Temperature (°C):	10
Humidity (%):	66
SQM Reading:	N/A

Context Map



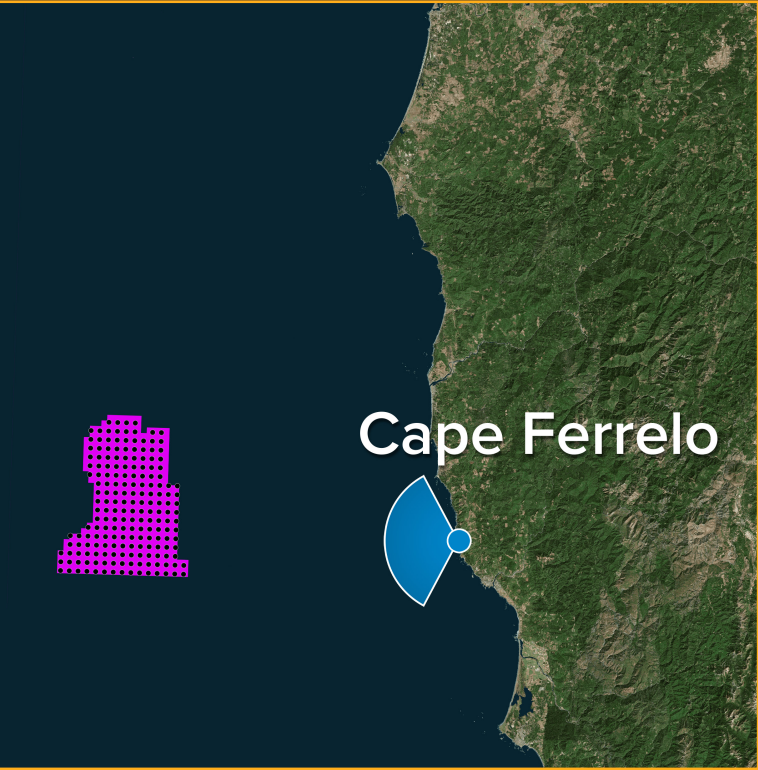
Viewing Instructions

For 11 x 17 inch Printed Display:	Viewing distance is 19.7 inches (500 mm)
For On-Screen Display:	Viewing distance is 19.7 inches (500 mm)



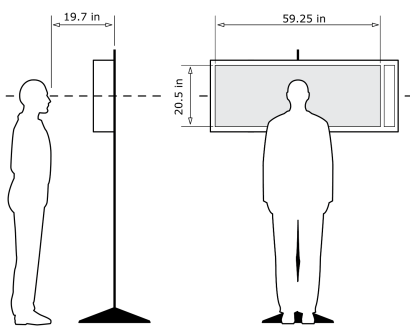
Cape Ferrello, Noon, Heading W - Existing View

For on-screen display:
Scale bar to be 4 inches wide
Viewing distance 19.7 inches



Latitude: 42.10375015
Longitude: -124.3482476
Elevation of Viewpoint Position: 254.6227
Height of Camera Above Ground: 5.41 ft
Date of Photography: 4/12/2023 at 12:16
Horizontal Field of View: 124°
Vertical Field of View: 55°

CORRECT VIEWING OF TRUEVIEW™ PHOTO SIMULATIONS



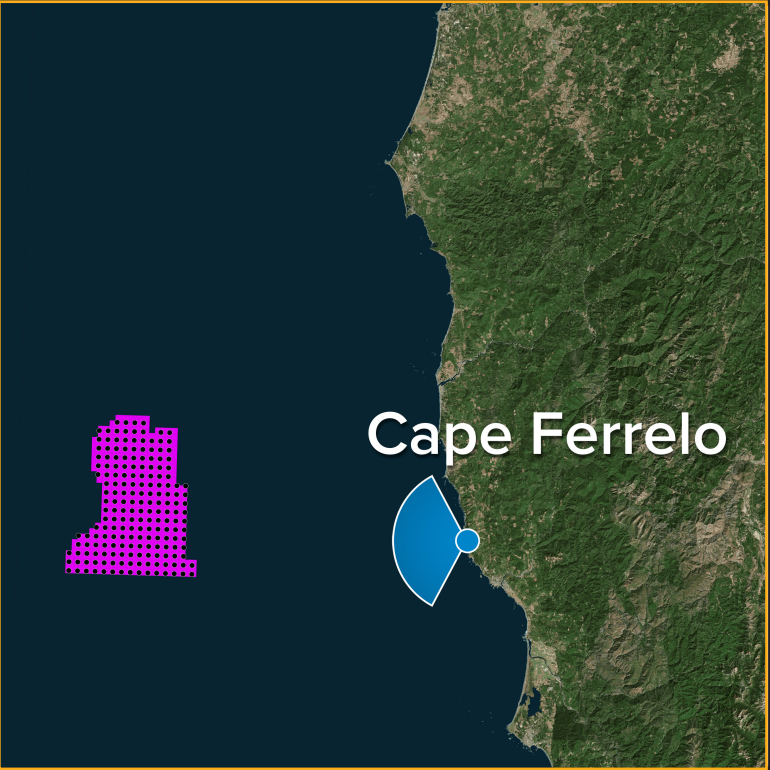
NOTES:
Viewpoint locations have been precision surveyed by
Surveyor
Westland Resources
Engineering & Environmental Services Inc.
Portland, OR
(971) 256-0046
Heights are above mean sea level.
Structure design and placement are subject to final engineering.
No part of this photo simulation shall be altered in any way.

Photo Simulation Created Using
TrueView™ Technology
(Patent No.: US 6,184,906 B2)
Provided by



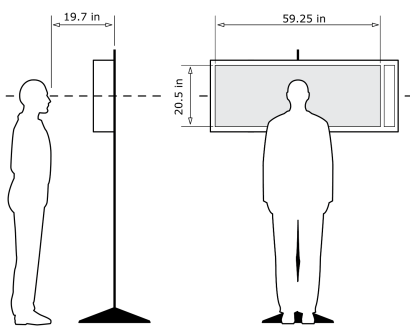
Cape Ferrello, Noon, Heading W - **Proposed View - Predicted Visibility**

For on-screen display:
Scale bar to be 4 inches wide
Viewing distance 19.7 inches



Latitude: 42.10375015
Longitude: -124.3482476
Elevation of Viewpoint Position: 254.6227
Height of Camera Above Ground: 5.41 ft
Date of Photography: 4/12/2023 at 12:16
Horizontal Field of View: 124°
Vertical Field of View: 55°

CORRECT VIEWING OF TRUEVIEW™ PHOTO SIMULATIONS



NOTES:
Viewpoint locations have been precision surveyed by
Surveyor
Westland Resources
Engineering & Environmental Services Inc.
Portland, OR
(971) 256-0046
Heights are above mean sea level.
Structure design and placement are subject to final engineering.
No part of this photo simulation shall be altered in any way.

Photo Simulation Created Using
TrueView™ Technology
(Patent No.: US 6,184,906 B2)
Provided by

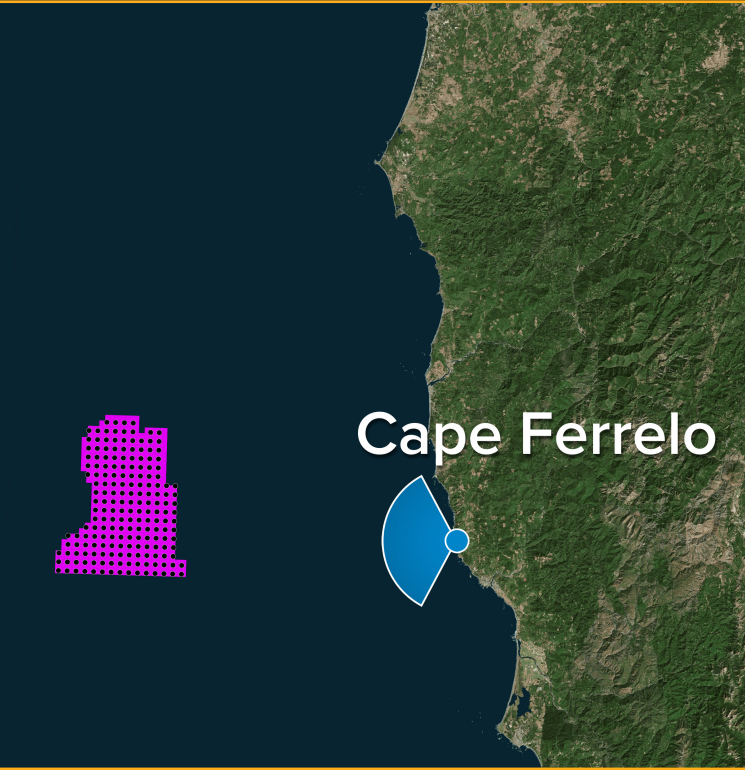


For on-screen display:
Scale bar to be 4 inches wide
Viewing distance 19.7 inches



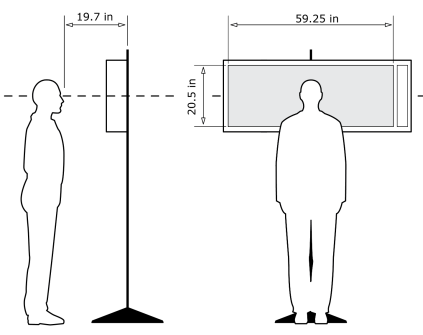
Cape Ferrello, Noon, Heading W - **Proposed View - Maximum Visibility**

For on-screen display:
Scale bar to be 4 inches wide
Viewing distance 19.7 inches



Latitude: 42.10375015
Longitude: -124.3482476
Elevation of Viewpoint Position: 254.6227
Height of Camera Above Ground: 5.41 ft
Date of Photography: 4/12/2023 at 12:16
Horizontal Field of View: 124°
Vertical Field of View: 55°

CORRECT VIEWING OF TRUEVIEW™ PHOTO SIMULATIONS



NOTES:
Viewpoint locations have been precision surveyed by
Surveyor
Westland Resources
Engineering & Environmental Services Inc.
Portland, OR
(971) 256-0046
Heights are above mean sea level.
Structure design and placement are subject to final engineering.
No part of this photo simulation shall be altered in any way.

Photo Simulation Created Using
TrueView™ Technology
(Patent No.: US 6,184,906 B2)
Provided by



For on-screen display:
Scale bar to be 4 inches wide
Viewing distance 19.7 inches

KOP: Cape Ferrelo | Season: Spring | Time of Day: Afternoon

Base Photographic Documentation

Date (MM/DD/YYYY):	3/15/2023
Time (24hr):	14:59
GPS Longitude:	-124.3482476
GPS Latitude:	42.10375015
Viewpoint Elevation (ft):	254.6227
Camera Height (ft):	5.41
Camera Heading:	W

Turbine Information

Distance to Nearest Turbine (Miles):	20.71
Number of Turbines:	262
Hub Height (ft):	725
Support Structure Height (ft):	106
Rotor Diameter (ft):	935
Total Height to Tip of Blade (ft):	1,171

Image Preview



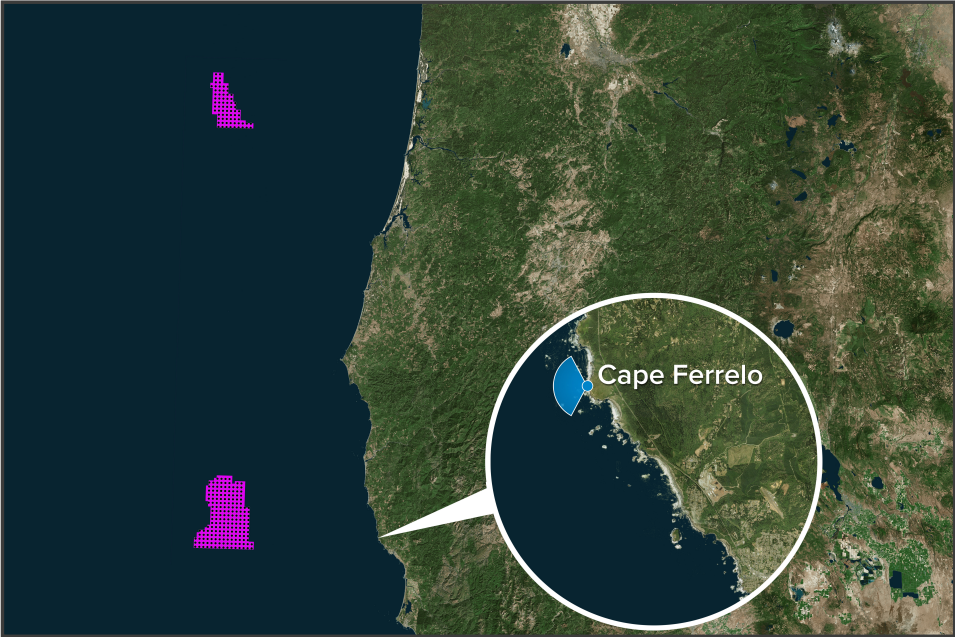
Camera Information

Camera Make & Model:	Canon EOS 5DS R
Camera Sensor Size:	36mm x 24mm
Lens Make & Model:	Sigma F1.4 DG HSM A033
Lens Focal Length:	20mm
Field of View:	65.47° (H) / 46.397° (V)

Sun, Sky, and Weather Information

Sun Azimuth:	228.3
Sun Elevation:	30.89
Lighting Angle (On Turbines):	Left Lit
Weather Conditions:	Fair
Predicted Visibility (Miles):	23.52
Temperature (°F):	51
Temperature (°C):	11
Humidity (%):	62
SQM Reading:	N/A

Context Map



Viewing Instructions

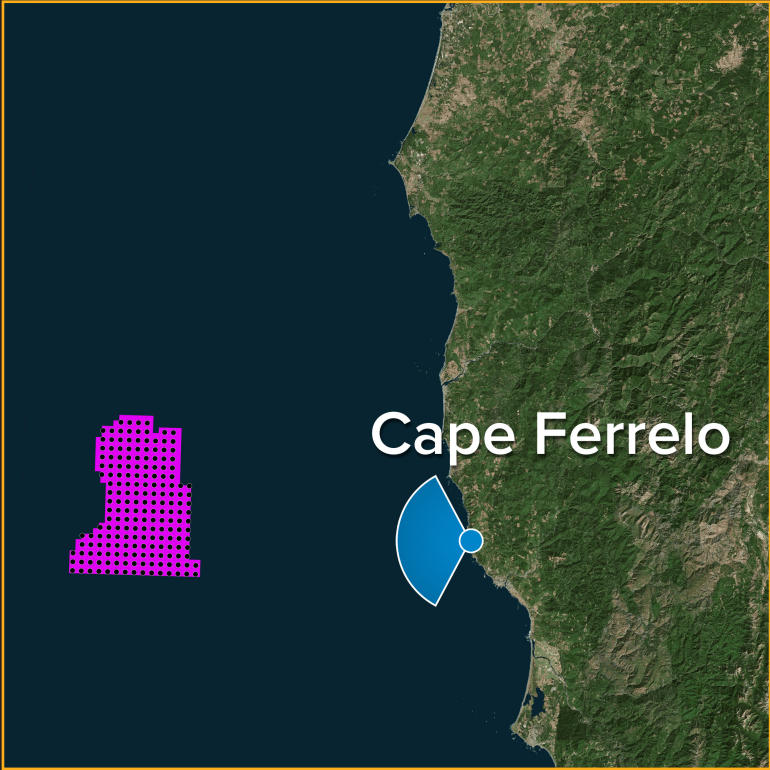
For 11 x 17 inch Printed Display:	Viewing distance is 19.7 inches (500 mm)
For On-Screen Display:	Viewing distance is 19.7 inches (500 mm)

● Key Observation Point (KOP) ● Turbines



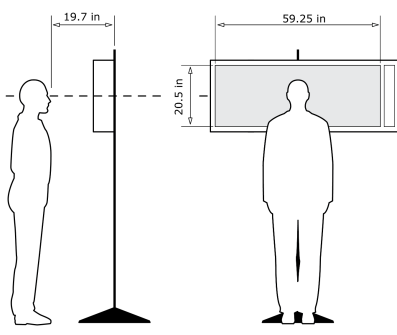
Cape Ferrello, Afternoon, Heading W - **Existing View**

For on-screen display:
Scale bar to be 4 inches wide
Viewing distance 19.7 inches



Latitude: 42.10375015
Longitude: -124.3482476
Elevation of Viewpoint Position: 254.6227
Height of Camera Above Ground: 5.41 ft
Date of Photography: 3/15/2023 at 14:59
Horizontal Field of View: 124°
Vertical Field of View: 55°

CORRECT VIEWING OF TRUEVIEW™ PHOTO SIMULATIONS



NOTES:

Viewpoint locations have been precision surveyed by

Surveyor
Westland Resources
Engineering & Environmental Services Inc.
Portland, OR
(971) 256-0046

Heights are above mean sea level.

Structure design and placement are subject to final engineering.

No part of this photo simulation shall be altered in any way.

Photo Simulation Created Using
TrueView™ Technology
(Patent No.: US 6,184,906 B2)

Provided by

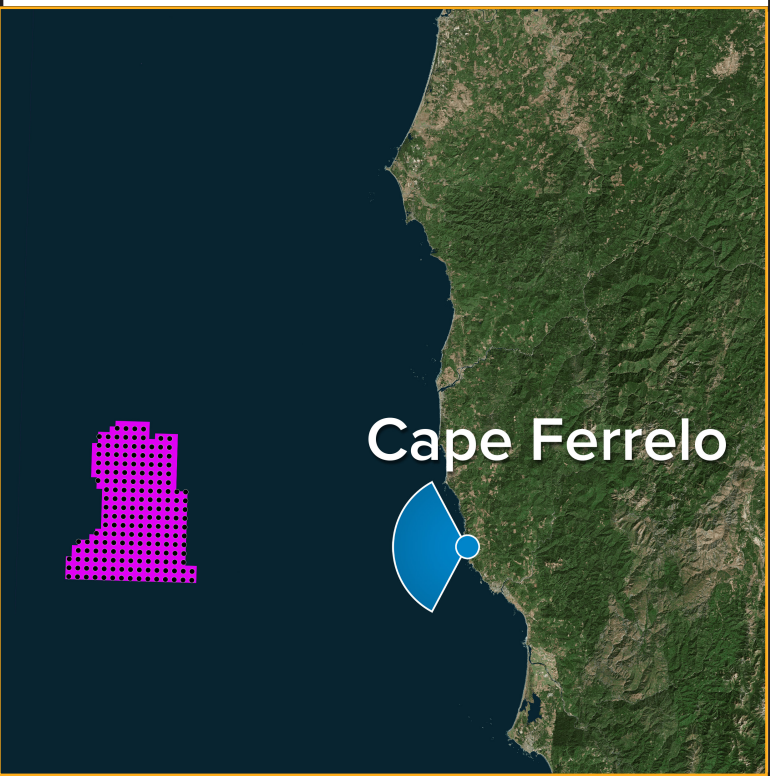
Truescape®

truescape.com



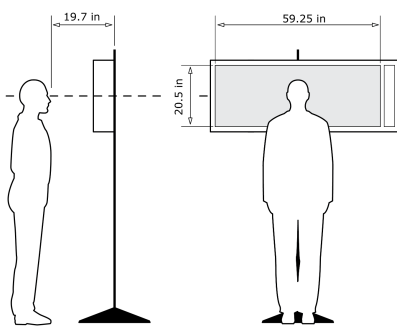
Cape Ferrello, Afternoon, Heading W - **Proposed View - Predicted Visibility**

For on-screen display:
Scale bar to be 4 inches wide
Viewing distance 19.7 inches



Latitude: 42.10375015
Longitude: -124.3482476
Elevation of Viewpoint Position: 254.6227
Height of Camera Above Ground: 5.41 ft
Date of Photography: 3/15/2023 at 14:59
Horizontal Field of View: 124°
Vertical Field of View: 55°

CORRECT VIEWING OF TRUEVIEW™ PHOTO SIMULATIONS



NOTES:

Viewpoint locations have been precision surveyed by

Surveyor:
Westland Resources
Engineering & Environmental Services Inc.
Portland, OR
(971) 256-0046

Heights are above mean sea level.

Structure design and placement are subject to final engineering.

No part of this photo simulation shall be altered in any way.

Photo Simulation Created Using
TrueView™ Technology
(Patent No.: US 6,184,906 B2)

Provided by

Truescape®

truescape.com

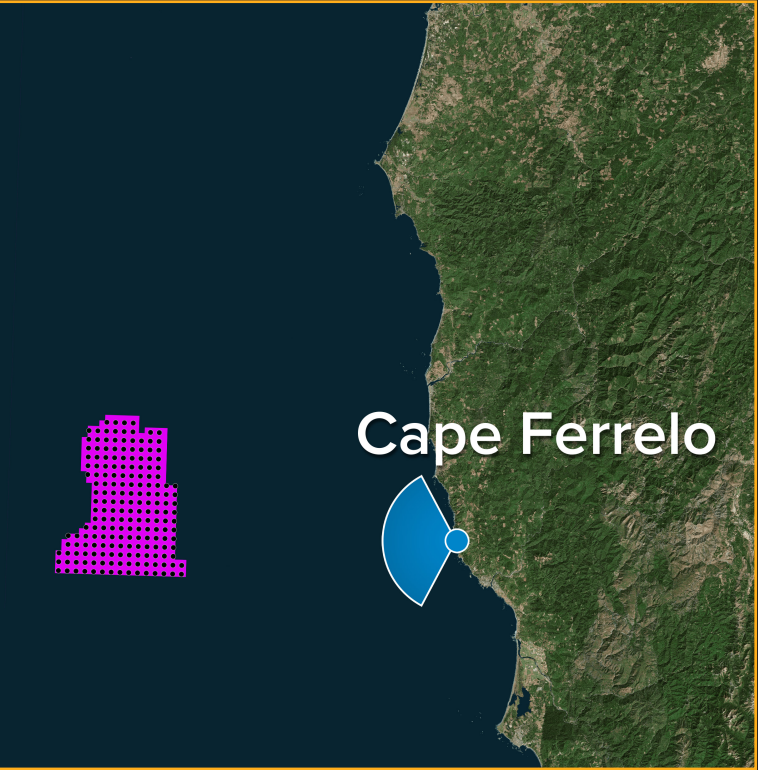


For on-screen display:
Scale bar to be 4 inches wide
Viewing distance 19.7 inches



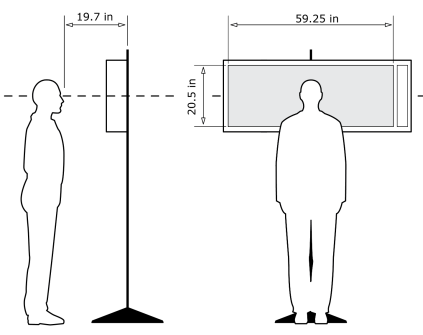
Cape Ferrello, Afternoon, Heading W - **Proposed View - Maximum Visibility**

For on-screen display:
Scale bar to be 4 inches wide
Viewing distance 19.7 inches



Latitude: 42.10375015
Longitude: -124.3482476
Elevation of Viewpoint Position: 254.6227
Height of Camera Above Ground: 5.41 ft
Date of Photography: 3/15/2023 at 14:59
Horizontal Field of View: 124°
Vertical Field of View: 55°

CORRECT VIEWING OF TRUEVIEW™ PHOTO SIMULATIONS



NOTES:
Viewpoint locations have been precision surveyed by
Surveyor
Westland Resources
Engineering & Environmental Services Inc
Portland, OR
(971) 256-0046
Heights are above mean sea level.
Structure design and placement are subject to final engineering.
No part of this photo simulation shall be altered in any way.

Photo Simulation Created Using
TrueView™ Technology
(Patent No.: US 8,184,906 B2)
Provided by



For on-screen display:
Scale bar to be 4 inches wide
Viewing distance 19.7 inches

KOP: Cape Ferrelo | Season: Spring | Time of Day: Night

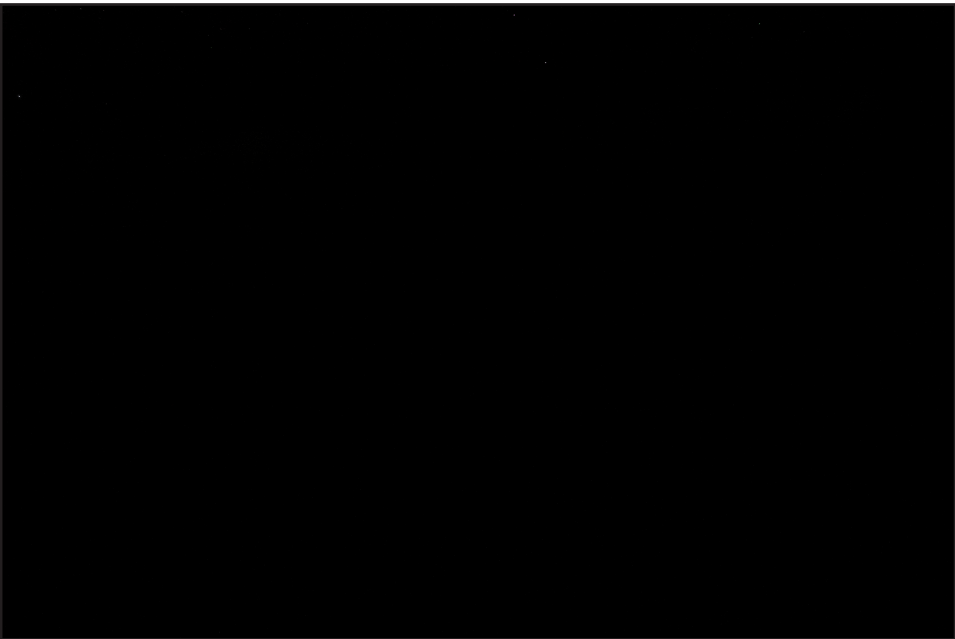
Base Photographic Documentation

Date (MM/DD/YYYY):	4/11/2023
Time (24hr):	21:42
GPS Longitude:	-124.3482476
GPS Latitude:	42.10375015
Viewpoint Elevation (ft):	254.6227
Camera Height (ft):	5.41
Camera Heading:	W

Turbine Information

Distance to Nearest Turbine (Miles):	20.71
Number of Turbines:	262
Hub Height (ft):	725
Support Structure Height (ft):	106
Rotor Diameter (ft):	935
Total Height to Tip of Blade (ft):	1,171

Image Preview



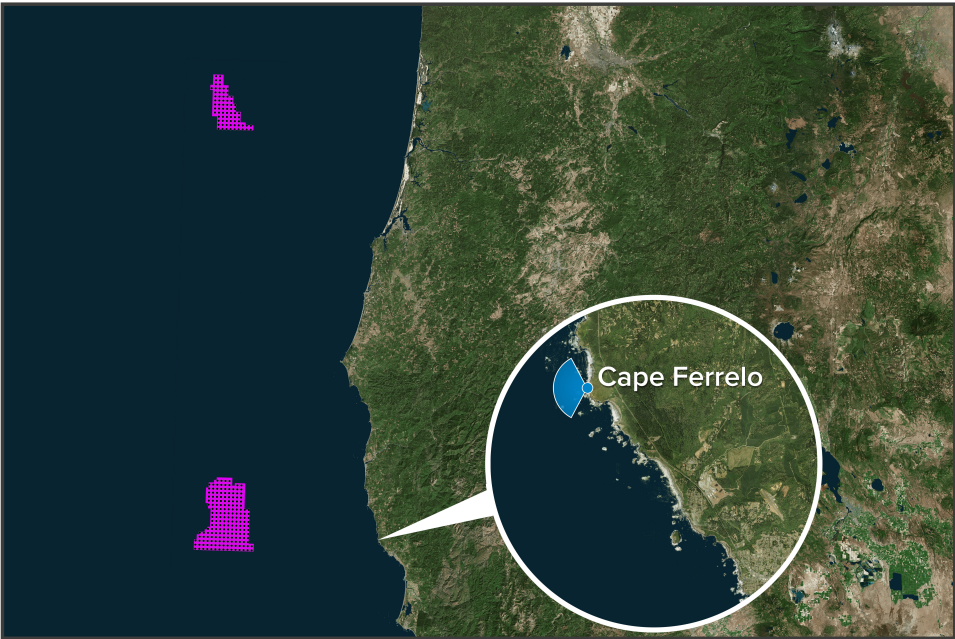
Camera Information

Camera Make & Model:	Canon EOS 5DS R
Camera Sensor Size:	36mm x 24mm
Lens Make & Model:	Sigma F1.4 DG HSM A034
Lens Focal Length:	20mm
Field of View:	65.47ø (H) / 46.397ø (V)

Sun, Sky, and Weather Information

Sun Azimuth:	N/A
Sun Elevation:	N/A
Lighting Angle (On Turbines):	N/A
Weather Conditions:	Fair
Predicted Visibility (Miles):	N/A
Temperature (°F):	44
Temperature (°C):	7
Humidity (%):	85
SQM Reading:	21.25

Context Map



Viewing Instructions

For 11 x 17 inch Printed Display:	Viewing distance is 19.7 inches (500 mm)
For On-Screen Display:	Viewing distance is 19.7 inches (500 mm)

● Key Observation Point (KOP) ● Turbines



Cape Ferrello, Night, Heading W - Existing View

For on-screen display:
Scale bar to be 4 inches wide
Viewing distance 19.7 inches

KW Oregon Offshore Wind

Cape Ferrello
Spring / Night
Heading W

● Viewpoint Location

● Project Area

Latitude: 42.10375015

Longitude: -124.3482476

Elevation of Viewpoint Position: 254.6227

Height of Camera Above Ground: 5.41 ft

Date of Photography: 4/11/2023 at 21:42

Horizontal Field of View: 124°

Vertical Field of View: 55°

CORRECT VIEWING OF TRUEVIEW™ PHOTO SIMULATIONS

NOTES:

Viewpoint locations have been precision surveyed by

Surveyor
Westland Resources
Engineering & Environmental Services Inc
Portland, OR
(971) 256-0046

Heights are above mean sea level.

Structure design and placement are subject to final engineering.

No part of this photo simulation shall be altered in any way.

Photo Simulation Created Using
TrueView™ Technology
(Patent No.: US 6,184,906 B2)

Provided by

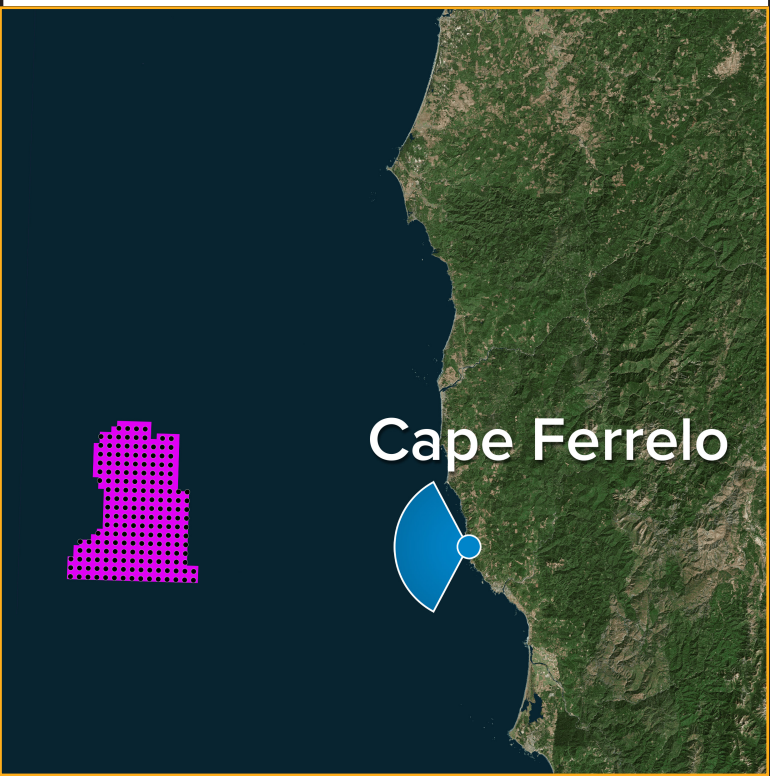
Truescape®
truescape.com

4/11/2023 at 21:42 - KOP-6



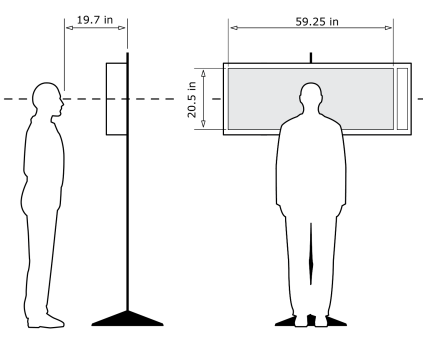
Cape Ferrello, Night, Heading W - **Proposed View - Maximum Visibility**

For on-screen display:
Scale bar to be 4 inches wide
Viewing distance 19.7 inches



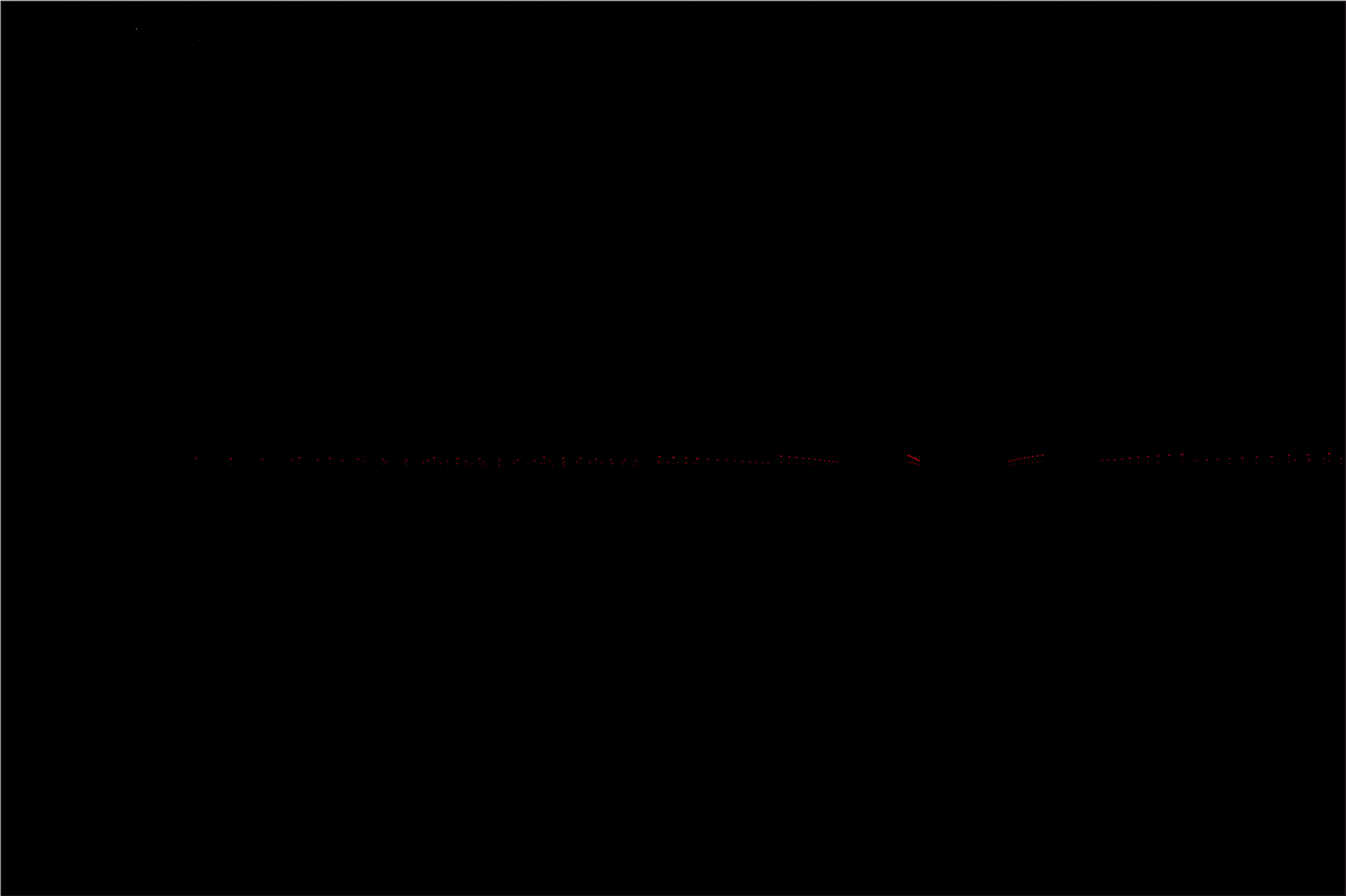
Latitude: 42.10375015
Longitude: -124.3482476
Elevation of Viewpoint Position: 254.6227
Height of Camera Above Ground: 5.41 ft
Date of Photography: 4/11/2023 at 21:42
Horizontal Field of View: 124°
Vertical Field of View: 55°

CORRECT VIEWING OF TRUEVIEW™ PHOTO SIMULATIONS



NOTES:
Viewpoint locations have been precision surveyed by
Surveyor
Westland Resources
Engineering & Environmental Services Inc
Portland, OR
(971) 256-0046
Heights are above mean sea level.
Structure design and placement are subject to final engineering.
No part of this photo simulation shall be altered in any way.

Photo Simulation Created Using
TrueView™ Technology
(Patent No.: US 6,184,906 B2)
Provided by



For on-screen display:
Scale bar to be 4 inches wide
Viewing distance 19.7 inches