

OCS-A
0501



MASS
USA

VINEYARD WIND

Draft Construction and Operations Plan

Volume I

Vineyard Wind Project

June 3, 2020

Submitted by

Vineyard Wind LLC
700 Pleasant Street, Suite 510
New Bedford, Massachusetts 02740

Submitted to

Bureau of Ocean Energy Management
45600 Woodland Road
Sterling, Virginia 20166

Prepared by

Epsilon Associates, Inc.
3 Mill & Main Place, Suite 250
Maynard, Massachusetts 01754

Draft Construction and Operations Plan Volume I Vineyard Wind Project

Submitted to:

BUREAU OF OCEAN ENERGY MANAGEMENT
45600 Woodland Rd
Sterling, VA 20166

Submitted by:

VINEYARD WIND LLC
700 Pleasant Street, Suite 510
New Bedford, MA 02740

Prepared by:

EPSILON ASSOCIATES, INC.
3 Mill & Main Place, Suite 250
Maynard, MA 01754

In Association with:

Baird & Associates	JASCO Applied Sciences
Biodiversity Research Institute	Morgan, Lewis & Bockius LLP
C2Wind	Public Archaeology Laboratory, Inc.
Capitol Air Space Group	RPS
Clarendon Hill Consulting	Saratoga Associates
Ecology and Environment	Swanson Environmental Associates
Foley Hoag	Wood Thilsted Partners Ltd
Geo SubSea LLC	WSP
Gray & Pape	

June 3, 2020

Section 2.0

Project Location – Location Plat

2.0 PROJECT LOCATION – LOCATION PLAT

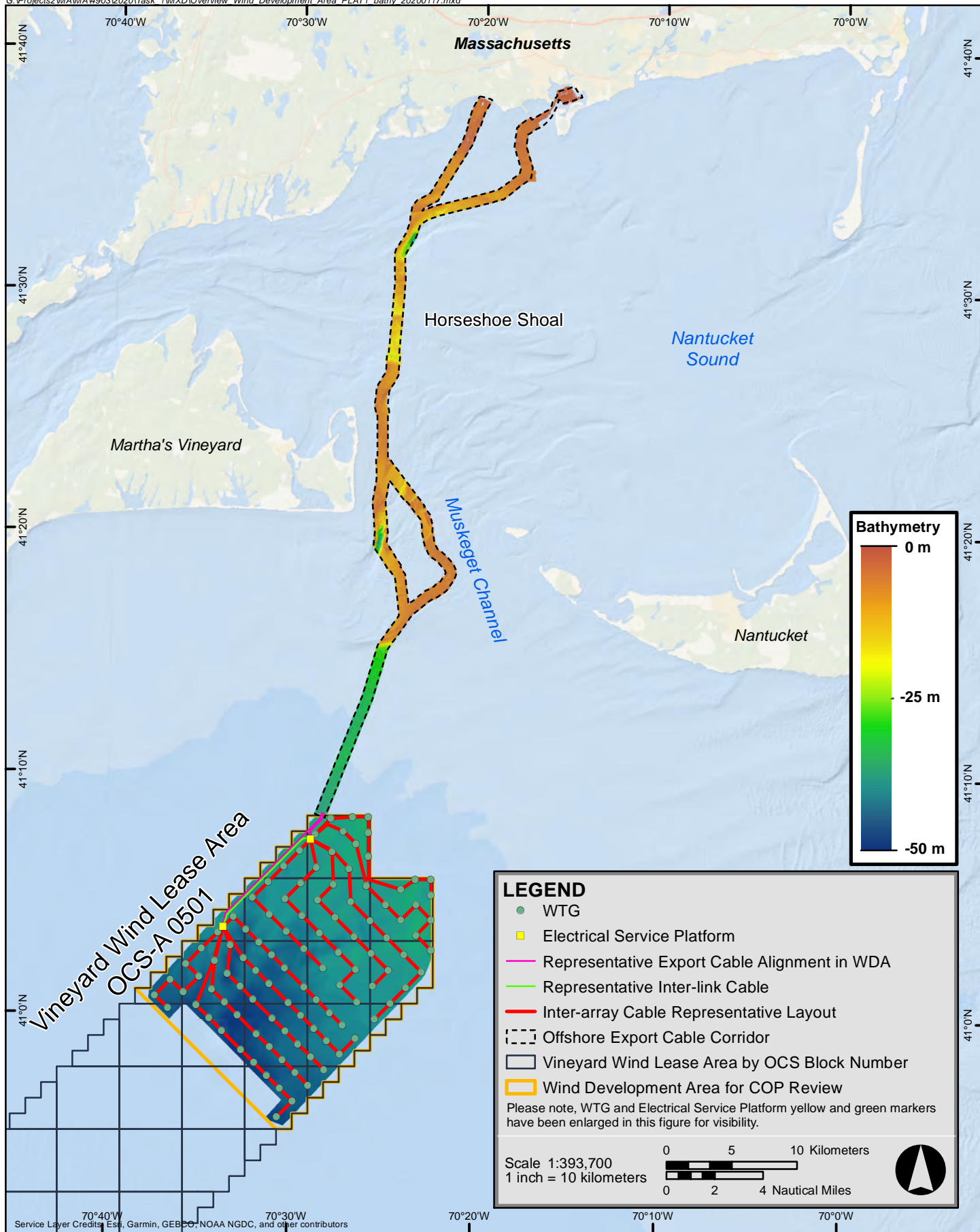
2.1 Vineyard Wind Lease Area (OCS-A 0501)

The over 675 square kilometers (“km²”) (166,886 acres) Lease Area is approximately 16 kilometers (“km”) (8.7 nautical miles [“nm”]) wide and 50 km (26 nm) long.⁶ As shown on Figures 2.1-1 and 2.1-2, the long axis of the Vineyard Wind Lease Area is oriented northeast to southwest. At its nearest point, the Lease Area is just over 23 km (14 miles [“mi”]) from the southeast corner of Martha’s Vineyard and a similar distance to Nantucket.

Water depths in the Lease Area range from about 35-60 meters (“m”) (115-197 feet [“ft”]). As shown on Figure 2.1-1, water depths gradually increase as distance from land increases. Water depths in the northern half of the Lease Area generally range from approximately 37-49.5 m (121-162 ft). As noted above and discussed in subsequent sections, the Project would be located within the northern portion of the Lease Area, referred to as the Wind Development Area (“WDA”). The WDA is 306 km² (75,614 acres).

Coordinates for the Wind Turbine Generators (“WTGs”) and Electrical Service Platforms (“ESPs”) are provided in Table 2.1-1, below.

⁶ As shown on Figure 1.1-1, the perimeter of the Lease Area is irregular or “sawtoothed,” hence the overall area is less than that of a true 10 x 30 mi rectangle.

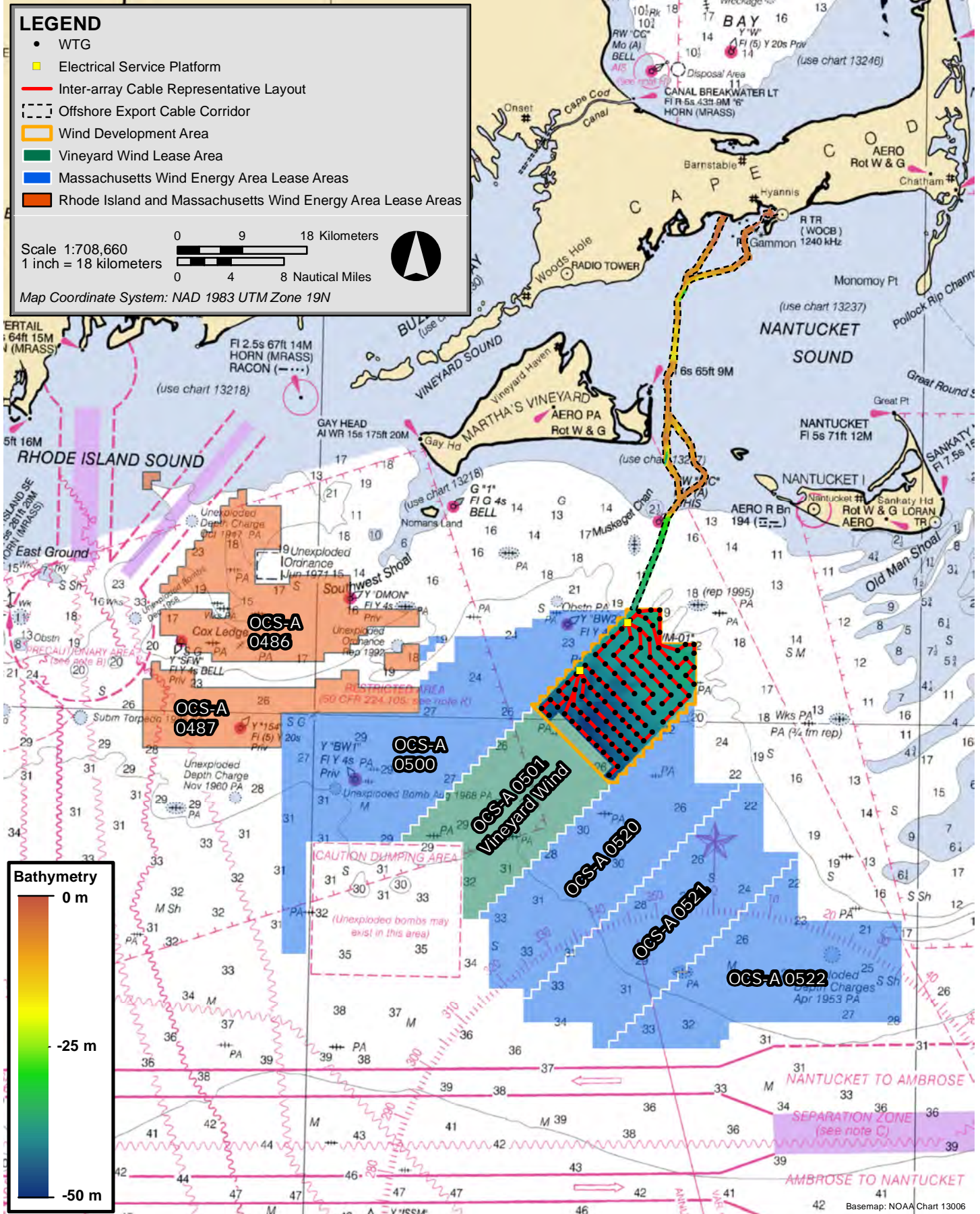


This product is for informational purposes and may not be suitable for legal, engineering, or surveying purposes. Map Projection: NAD83 UTM Zone 19

Vineyard Wind Project



Figure 2.1-1
Offshore Location Plat



Vineyard Wind Project



Figure 2.1-2
Offshore Location Plat (Regional View)

Table 2.1-1 Coordinates for the WTGs and ESPs

Name	Easting (m)	Northing (m)	Latitude	Longitude	Water Depth (m)
WTGs					
VYW01_R00_P01	379890	4555090	41° 08' 17.6589" N	70° 25' 52.0635" W	37.1
VYW01_R00_P02	384690	4550290	41° 05' 44.5510" N	70° 22' 22.9830" W	39.7
VYW01_R01_P01	378690	4555090	41° 08' 17.0163" N	70° 26' 43.5213" W	37.8
VYW01_R01_P02	379890	4553890	41° 07' 38.7564" N	70° 25' 51.2180" W	37.5
VYW01_R01_P03	383490	4550290	41° 05' 43.9349" N	70° 23' 14.4090" W	38.5
VYW01_R01_P04	384690	4549090	41° 05' 5.6473" N	70° 22' 22.1730" W	40.0
VYW01_R02_P01	377004	4554937	41° 08' 11.1427" N	70° 27' 55.7084" W	38.1
VYW01_R02_P02	377966	4553975	41° 07' 40.4790" N	70° 27' 13.7691" W	40.0
VYW01_R02_P03	378927	4553014	41° 07' 9.8426" N	70° 26' 31.8843" W	38.8
VYW01_R02_P04	379889	4552052	41° 06' 39.1700" N	70° 25' 49.9666" W	39.2
VYW01_R02_P05	382383	4549518	41° 05' 18.3331" N	70° 24' 1.3175" W	38.7
VYW01_R02_P06	383536	4548353	41° 04' 41.1618" N	70° 23' 11.1173" W	40.0
VYW01_R02_P07	384688	4547189	41° 04' 4.0160" N	70° 22' 20.9764" W	39.4
VYW01_R03_P01	375802	4553735	41° 07' 31.5172" N	70° 28' 46.3742" W	39.1
VYW01_R03_P02	377113	4552424	41° 06' 49.7348" N	70° 27' 49.2236" W	39.4
VYW01_R03_P03	378424	4551113	41° 06' 7.9442" N	70° 26' 52.0932" W	39.3
VYW01_R03_P04	379735	4549802	41° 05' 26.1453" N	70° 25' 54.9828" W	40.0
VYW01_R03_P05	381202	4548335	41° 04' 39.3628" N	70° 24' 51.1006" W	40.1
VYW01_R03_P06	382364	4547173	41° 04' 2.2994" N	70° 24' 0.5178" W	39.4
VYW01_R03_P07	383527	4546010	41° 03' 25.1976" N	70° 23' 9.9073" W	37.6
VYW01_R03_P08	384689	4544848	41° 02' 48.1213" N	70° 22' 19.3560" W	39.7
VYW01_R04_P01	374600	4552533	41° 06' 51.8856" N	70° 29' 37.0230" W	40.1
VYW01_R04_P02	375911	4551222	41° 06' 10.1102" N	70° 28' 39.8735" W	40.4
VYW01_R04_P03	377222	4549911	41° 05' 28.3265" N	70° 27' 42.7441" W	40.0
VYW01_R04_P04	378533	4548600	41° 04' 46.5345" N	70° 26' 45.6347" W	40.0
VYW01_R04_P05	380000	4547133	41° 03' 59.7597" N	70° 25' 41.7536" W	42.1
VYW01_R04_P06	381311	4545822	41° 03' 17.9502" N	70° 24' 44.6869" W	40.7
VYW01_R04_P07	382623	4544510	41° 02' 36.1005" N	70° 23' 47.5967" W	39.8
VYW01_R04_P08	383934	4543199	41° 01' 54.2744" N	70° 22' 50.5700" W	40.3
VYW01_R05_P01	373398	4551331	41° 06' 12.2481" N	70° 30' 27.6549" W	41.0
VYW01_R05_P02	374709	4550020	41° 05' 30.4796" N	70° 29' 30.5064" W	40.8

Table 2.1-1 Coordinates for the WTGs and ESPs (Continued)

Name	Easting (m)	Northing (m)	Latitude	Longitude	Water Depth (m)
WTGs					
VYW01_R05_P03	376020	4548709	41° 04' 48.7028" N	70° 28' 33.3781" W	40.7
VYW01_R05_P04	377331	4547398	41° 04' 6.9177" N	70° 27' 36.2698" W	41.4
VYW01_R05_P05	378798	4545931	41° 03' 20.1506" N	70° 26' 32.3898" W	42.0
VYW01_R05_P06	380109	4544619	41° 02' 38.3155" N	70° 25' 35.3233" W	40.2
VYW01_R05_P07	381420	4543308	41° 01' 56.5046" N	70° 24' 38.2776" W	40.9
VYW01_R05_P08	382732	4541997	41° 01' 14.6859" N	70° 23' 41.2092" W	41.0
VYW01_R06_P01	372196	4550129	41° 05' 32.6047" N	70° 31' 18.2699" W	41.4
VYW01_R06_P02	373507	4548818	41° 04' 50.8430" N	70° 30' 21.1225" W	42.0
VYW01_R06_P03	374818	4547507	41° 04' 9.0731" N	70° 29' 23.9952" W	42.5
VYW01_R06_P04	376129	4546196	41° 03' 27.2949" N	70° 28' 26.8879" W	43.0
VYW01_R06_P05	377596	4544729	41° 02' 40.5355" N	70° 27' 23.0091" W	42.3
VYW01_R06_P06	378907	4543417	41° 01' 58.7073" N	70° 26' 25.9436" W	41.0
VYW01_R06_P07	380218	4542106	41° 01' 16.9032" N	70° 25' 28.8989" W	41.8
VYW01_R06_P08	381530	4540795	41° 00' 35.0915" N	70° 24' 31.8315" W	41.7
VYW01_R07_P01	370994	4548927	41° 04' 52.9553" N	70° 32' 8.8680" W	43.0
VYW01_R07_P02	372305	4547616	41° 04' 11.2005" N	70° 31' 11.7217" W	42.8
VYW01_R07_P03	373615	4546305	41° 03' 29.4369" N	70° 30' 14.6382" W	43.4
VYW01_R07_P04	374926	4544994	41° 02' 47.6655" N	70° 29' 17.5320" W	44.2
VYW01_R07_P05	376394	4543527	41° 02' 0.9144" N	70° 28' 13.6115" W	41.8
VYW01_R07_P06	377705	4542215	41° 01' 19.0931" N	70° 27' 16.5471" W	42.3
VYW01_R07_P07	379016	4540904	41° 00' 37.2959" N	70° 26' 19.5034" W	42.7
VYW01_R07_P08	380328	4539593	40° 59' 55.4910" N	70° 25' 22.4369" W	42.2
VYW02_R01_P01	369528	4547461	41° 04' 4.5895" N	70° 33' 10.5563" W	43.0
VYW02_R01_P02	370512	4546478	41° 03' 33.2890" N	70° 32' 27.6638" W	45.5
VYW02_R01_P03	371495	4545495	41° 03' 1.9833" N	70° 31' 44.8253" W	43.5
VYW02_R01_P04	372478	4544512	41° 02' 30.6729" N	70° 31' 1.9981" W	45.3
VYW02_R01_P05	373461	4543529	41° 01' 59.3579" N	70° 30' 19.1822" W	45.2
VYW02_R01_P06	374929	4542061	41° 01' 12.5837" N	70° 29' 15.2624" W	44.3
VYW02_R01_P07	375912	4541078	41° 00' 41.2570" N	70° 28' 32.4745" W	43.6
VYW02_R01_P08	376896	4540094	41° 00' 9.8939" N	70° 27' 49.6544" W	43.6
VYW02_R01_P09	377879	4539111	40° 59' 38.5579" N	70° 27' 6.8891" W	43.3
VYW02_R01_P10	378863	4538127	40° 59' 7.1854" N	70° 26' 24.0915" W	43.2
VYW02_R02_P01	368326	4546259	41° 03' 24.9269" N	70° 34' 1.1170" W	43.1
VYW02_R02_P02	369310	4545276	41° 02' 53.6316" N	70° 33' 18.2252" W	45.0
VYW02_R02_P03	370293	4544293	41° 02' 22.3310" N	70° 32' 35.3876" W	46.6
VYW02_R02_P04	371276	4543310	41° 01' 51.0258" N	70° 31' 52.5612" W	45.0
VYW02_R02_P05	372259	4542326	41° 01' 19.6835" N	70° 31' 9.7453" W	46.5

Table 2.1-1 Coordinates for the WTGs and ESPs (Continued)

Name	Easting (m)	Northing (m)	Latitude	Longitude	Water Depth (m)
WTGs					
VYW02_R02_P06	373726	4540859	41° 00' 32.9489" N	70° 30' 5.8702" W	47.0
VYW02_R02_P07	374710	4539876	41° 00' 1.6279" N	70° 29' 23.0403" W	45.3
VYW02_R02_P08	375693	4538892	40° 59' 30.2693" N	70° 28' 40.2638" W	44.5
VYW02_R02_P09	376677	4537909	40° 58' 58.9391" N	70° 27' 57.4565" W	43.7
VYW02_R02_P10	377660	4536925	40° 58' 27.5712" N	70° 27' 14.7024" W	43.8
VYW02_R03_P01	367124	4545057	41° 02' 45.2583" N	70° 34' 51.6608" W	43.9
VYW02_R03_P02	368108	4544074	41° 02' 13.9682" N	70° 34' 8.7698" W	44.0
VYW02_R03_P03	369091	4543091	41° 01' 42.6728" N	70° 33' 25.9330" W	48.3
VYW02_R03_P04	370074	4542108	41° 01' 11.3727" N	70° 32' 43.1074" W	46.0
VYW02_R03_P05	371057	4541124	41° 00' 40.0356" N	70° 32' 0.2923" W	48.7
VYW02_R03_P06	372524	4539657	40° 59' 53.3086" N	70° 30' 56.4184" W	48.1
VYW02_R03_P07	373508	4538674	40° 59' 21.9928" N	70° 30' 13.5894" W	46.1
VYW02_R03_P08	374491	4537690	40° 58' 50.6394" N	70° 29' 30.8136" W	45.2
VYW02_R03_P09	375475	4536707	40° 58' 19.3143" N	70° 28' 48.0070" W	44.8
VYW02_R03_P10	376458	4535723	40° 57' 47.9516" N	70° 28' 5.2538" W	45.2
VYW02_R04_P01	365922	4543855	41° 02' 5.5839" N	70° 35' 42.1877" W	44.4
VYW02_R04_P02	366905	4542872	41° 01' 34.2983" N	70° 34' 59.3404" W	45.8
VYW02_R04_P03	367889	4541889	41° 01' 3.0086" N	70° 34' 16.4616" W	45.8
VYW02_R04_P04	368872	4540906	41° 00' 31.7137" N	70° 33' 33.6368" W	46.3
VYW02_R04_P05	369855	4539922	41° 00' 0.3817" N	70° 32' 50.8225" W	49.4
VYW02_R04_P06	371322	4538455	40° 59' 13.6625" N	70° 31' 46.9498" W	48.0
VYW02_R04_P07	372306	4537472	40° 58' 42.3518" N	70° 31' 4.1216" W	46.5
VYW02_R04_P08	373289	4536488	40° 58' 11.0035" N	70° 30' 21.3466" W	46.0
VYW02_R04_P09	374273	4535505	40° 57' 39.6836" N	70° 29' 38.5408" W	46.0
VYW02_R04_P10	375256	4534521	40° 57' 8.3260" N	70° 28' 55.7883" W	46.6
VYW02_R05_P01	364720	4542653	41° 01' 25.9035" N	70° 36' 32.6978" W	45.3
VYW02_R05_P02	365703	4541670	41° 00' 54.6231" N	70° 35' 49.8513" W	46.8
VYW02_R05_P03	366687	4540687	41° 00' 23.3386" N	70° 35' 6.9733" W	48.0
VYW02_R05_P04	367670	4539703	40° 59' 52.0164" N	70° 34' 24.1486" W	46.6
VYW02_R05_P05	368653	4538720	40° 59' 20.7219" N	70° 33' 41.3359" W	48.7
VYW02_R05_P06	370120	4537253	40° 58' 34.0104" N	70° 32' 37.4645" W	49.5
VYW02_R05_P07	371104	4536270	40° 58' 2.7049" N	70° 31' 54.6370" W	48.8
VYW02_R05_P08	372087	4535286	40° 57' 31.3617" N	70° 31' 11.8628" W	48.4
VYW02_R05_P09	373071	4534303	40° 57' 0.0469" N	70° 30' 29.0578" W	46.5
VYW02_R05_P10	374054	4533319	40° 56' 28.6945" N	70° 29' 46.3061" W	46.6
VYW02_R06_P01	363518	4541451	41° 00' 46.2172" N	70° 37' 23.1910" W	46.7

Table 2.1-1 Coordinates for the WTGs and ESPs (Continued)

Name	Easting (m)	Northing (m)	Latitude	Longitude	Water Depth (m)
WTGs					
VYW02_R06_P02	364501	4540468	41° 00' 14.9419" N	70° 36' 40.3454" W	46.9
VYW02_R06_P10	372852	4532117	40° 55' 49.0570" N	70° 30' 36.8071" W	47.5
ESPs					
ESP1_modif	375448.1	4553381.0	41° 07' 19.846" N	70° 29' 1.288" W	38
ESP2_modif	368748.3	4546682.5	41° 03' 38.901" N	70° 33' 43.356" W	42

NOTES:

1. Grid coordinates referenced to UTM Zone 19 north in meters, NAD83 datum.
2. Water depths may be interpolated where WTG and ESP locations have not been surveyed yet.
3. Water depths are referenced to Mean Lower Low Water.

2.2 Onshore Facilities

The Project's onshore facilities will include the Landfall Site, the onshore export cable from the Landfall Site to the onshore substation, the onshore substation itself, and the connections from the onshore substation to the existing bulk power grid. The Project's onshore components are shown on Figure 2.2-1.

