



Revolution Wind

Powered by Ørsted & Eversource

Appendix A: Revolution Wind Cumulative Visual Simulations

CI01: Cuttyhunk Island, Gosnold, Massachusetts

Existing Conditions

Simulation Size: 66" in width by 29.3" in height. Images should be viewed from a distance of 15 inches in order to obtain the proper perspective.

This box should be easily 1" long on the printed panorama.

**Environmental Data**  
Date Taken: 1/18/2018  
Time: 1:30 PM  
Temperature: 25°F  
Humidity: 88%  
Visibility: >10 miles  
Wind Direction: North-Northwest  
Wind Speed: 7 mph  
Conditions Observed: Clear

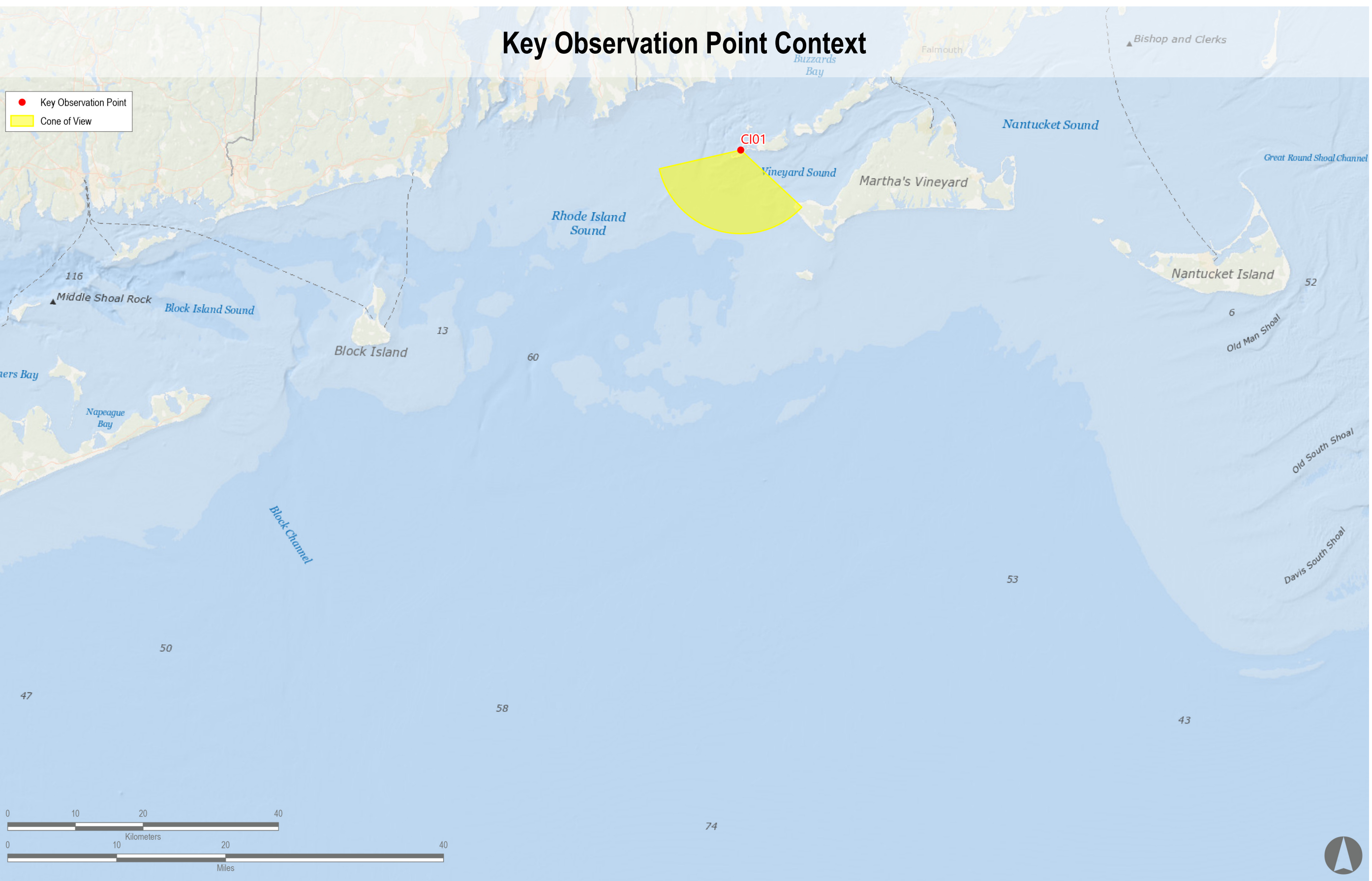
**Key Observation Point Information**  
County: Dukes  
Town: Gosnold  
State: Massachusetts  
Location: Cuttyhunk Island  
Latitude, Longitude: 41.42052° N, 70.93411° W  
Direction of View (Center): South-Southwest (193.8°)  
Field of View: 124° x 55°

**Camera Information**  
Camera: Canon EOS 5D Mark IV  
Resolution: 30.4 Megapixels  
Lens Focal Length: 50 mm  
Camera Height: 151.3 feet AMSL

**Visual Resources**  
Landscape Similarity Zone: Coastal Scrub/Scrub Forest  
User Group: Local Resident, Tourist/Vacationers  
Aesthetic Resource: Elizabeth Islands State Scenic Area, Buzzards Bay

**Notes:**

- Photosimulation Size: 66" in width by 29.3" in height. Images should be viewed from 15 inches in order to obtain the proper perspective.
- The potential number of WTCs and OSSs screened from view was calculated using a curvature of the earth model based on the distance, viewer height, and maximum structure height. This analysis does not consider the screening effects of intervening vegetation, structures, and topography.
- Offshore Substation location and dimensions are based on preliminary publicly available project data. Projects for which this data is not currently available, WTCs are used for all foundation positions, OSS positions and dimensions considered in this photosimulation are subject to potential modification.
- Nighttime photosimulations are digitally adjusted from daytime photographs. Nighttime photographs captured at each represented KOP inform the presence or lack of existing light sources.
- The existing WTCs associated with the Block Island Wind Farm are 16.9 miles from KOP USA. In the daytime photosimulation, the WTCs appear faint due to atmospheric perspective commonly occurring on clear days such as the conditions illustrated in this photosimulation. In order to illustrate maximum potential visibility of the proposed WTC, this degree of atmospheric perspective is not applied to the photosimulations.
- Photographs were not obtained from NL01 during field review due to public access restrictions. In place of an actual photograph from this location, EDR created a virtual three-dimensional (3D) model of the island.







Revolution Wind

Powered byØrsted &Eversource

Appendix A: Revolution Wind Cumulative Visual Simulations

CI01: Cuttyhunk Island, Gosnold, Massachusetts

Visual Simulation: 2023 Project Construction (South Fork Wind and Vineyard Wind North)

Simulation Size: 66" in width by 29.3" in height. Images should be viewed from a distance of 15 inches in order to obtain the proper perspective.

This box should be easy to find on the printed panorama.

Environmental Data

Date Taken: 1/18/2018  
Time: 1:30 PM  
Temperature: 25°F  
Humidity: 68%  
Visibility: >10 miles  
Wind Direction: North-Northwest  
Wind Speed: 7 mph  
Conditions Observed: Clear

Camera Information

Camera: Canon EOS 5D Mark IV  
Resolution: 30.4 Megapixels  
Lens Focal Length: 50 mm  
Camera Height: 151.3 feet AMSL

Notes:

- Photosimulation Size: 66" in width by 29.3" in height. Images should be viewed from 15 inches in order to obtain the proper perspective.
- The potential number of WTCs and OSSs screened from view was calculated using a curvature of the earth model based on the distance, viewer height, and maximum structure height. This analysis does not consider the screening effects of intervening vegetation, structures, and topography.
- Offshore Substation location and dimensions are based on preliminary publicly available project data. Projects for which this data is not currently available, WTCs are used for all foundation positions, OSS positions and dimensions considered in this photosimulation are subject to potential modification.
- Nighttime photosimulations are digitally adjusted from daytime photographs. Nighttime photographs captured at each represented KOP inform the presence or lack of existing light sources.
- The existing WTCs associated with the Block Island Wind Farm are 16.9 miles from KOP USA. In the daytime photosimulation, the WTCs appear faint due to atmospheric perspective commonly occurring on clear days such as the conditions illustrated in this photosimulation. In order to illustrate maximum potential visibility of the proposed WTC, this degree of atmospheric perspective is not applied to the photosimulations.
- Photographs were not obtained from NL01 during field review due to public access restrictions. In place of an actual photograph from this location, EDR created a virtual three-dimensional (3D) model of the island.

Key Observation Point Information

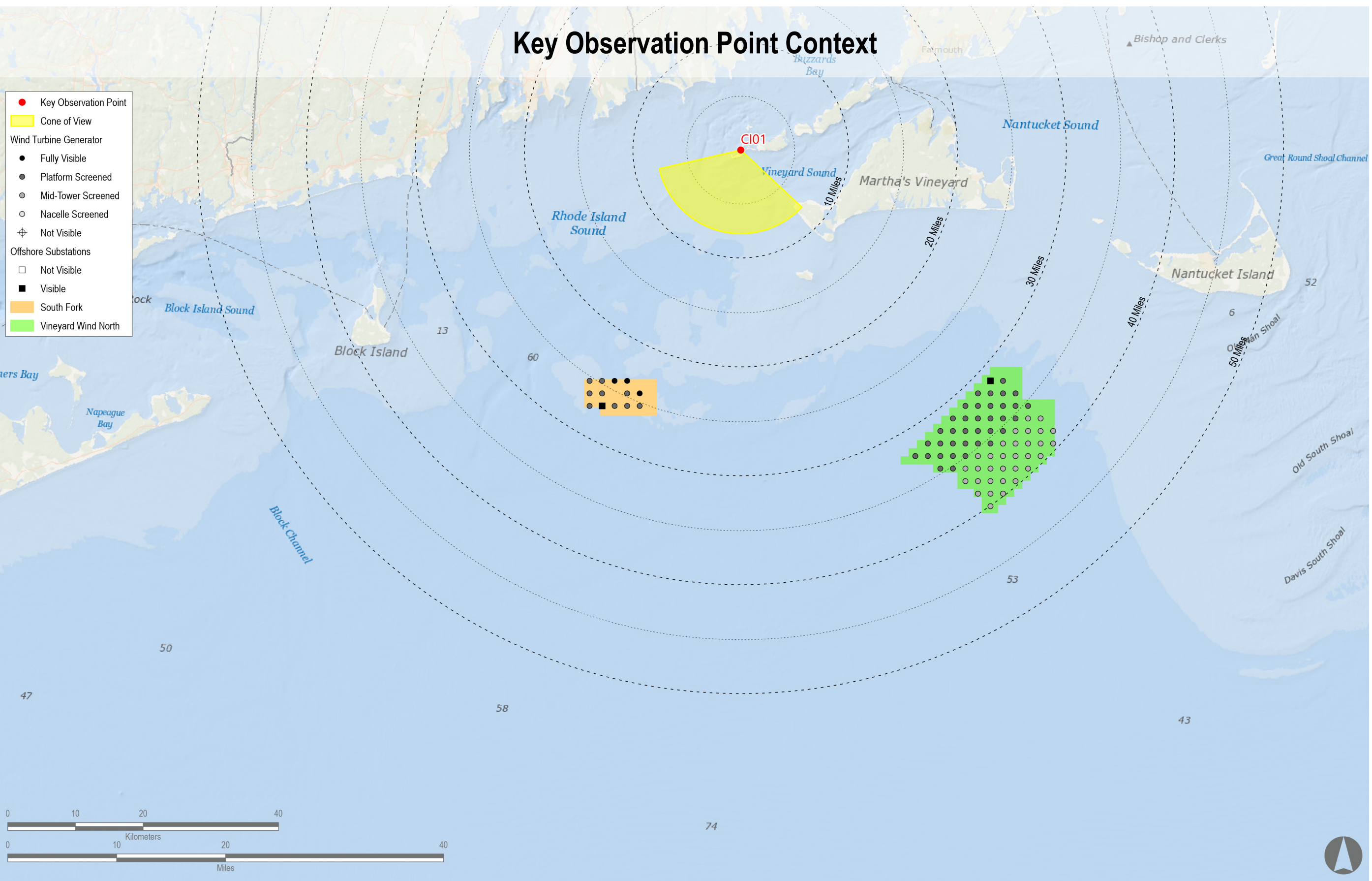
County: Dukes  
Town: Gosnold  
State: Massachusetts  
Location: Cuttyhunk Island  
Latitude, Longitude: 41.42052° N, 70.93411° W  
Direction of View (Center): South-Southwest (193.8°)  
Field of View: 124° x 55°

Visual Resources

Landscape Similarity Zone: Coastal Scrub/Scrub Forest  
User Group: Local Resident, Tourist/Vacationers  
Aesthetic Resource: Elizabeth Islands State Scenic Area, Buzzards Bay

Reasonably Foreseeable Projects Represented in Visual Simulation

Project	Year of Development	WTC Model	Potential Number of WTCs & OSSs Visible*	Total Number of WTCs & OSSs in Project	Distance to Nearest Visible WTC (miles)	Distance to Furthest Visible WTC (miles)
South Fork Wind Farm	2023	12 MW	13	13	23.6	27.3
Vineyard Wind North	2023	14 MW	69	69	31.2	39.9







Revolution Wind

Powered byØrsted &Eversource

Appendix A: Revolution Wind Cumulative Visual Simulations

CI01: Cuttyhunk Island, Gosnold, Massachusetts

Visual Simulation: 2023 Project Construction with Revolution Construction added (Revolution Wind, South Fork Wind, and Vineyard Wind North)

Simulation Size: 66" in width by 29.3" in height. Images should be viewed from a distance of 15 inches in order to obtain the proper perspective.

This box should be easy to fit on the printed panorama.

**Environmental Data**  
Date Taken: 1/18/2018  
Time: 1:30 PM  
Temperature: 25°F  
Humidity: 68%  
Visibility: >10 miles  
Wind Direction: North-Northwest  
Wind Speed: 7 mph  
Conditions Observed: Clear

**Camera Information**  
Camera: Canon EOS 5D Mark IV  
Resolution: 30.4 Megapixels  
Lens Focal Length: 50 mm  
Camera Height: 151.3 feet AMSL

Notes:

- Photosimulation Size: 66" in width by 29.3" in height. Images should be viewed from 15 inches in order to obtain the proper perspective.
- The potential number of WTGs and OSSs screened from view was calculated using a curvature of the earth model based on the distance, viewer height, and maximum structure height. This analysis does not consider the screening effects of intervening vegetation, structures, and topography.
- Offshore Substation location and dimensions are based on preliminary publicly available project data. Projects for which this data is not currently available, WTGs are used for all foundation positions, OSS positions and dimensions considered in this photosimulation are subject to potential modification.
- Nighttime photosimulations are digitally adjusted from daytime photographs. Nighttime photographs captured at each represented KOP inform the presence or lack of existing light sources.
- The existing WTGs associated with the Block Island Wind Farm are 16.9 miles from KOP USA. In the daytime photosimulation, the WTGs appear faint due to atmospheric perspective commonly occurring on clear days such as the conditions illustrated in this photosimulation. In order to illustrate maximum potential visibility of the proposed WTG, this degree of atmospheric perspective is not applied to the photosimulations.
- Photographs were not obtained from NL01 during field review due to public access restrictions. In place of an actual photograph from this location, EDR created a virtual three-dimensional (3D) model of the island.

Key Observation Point Information

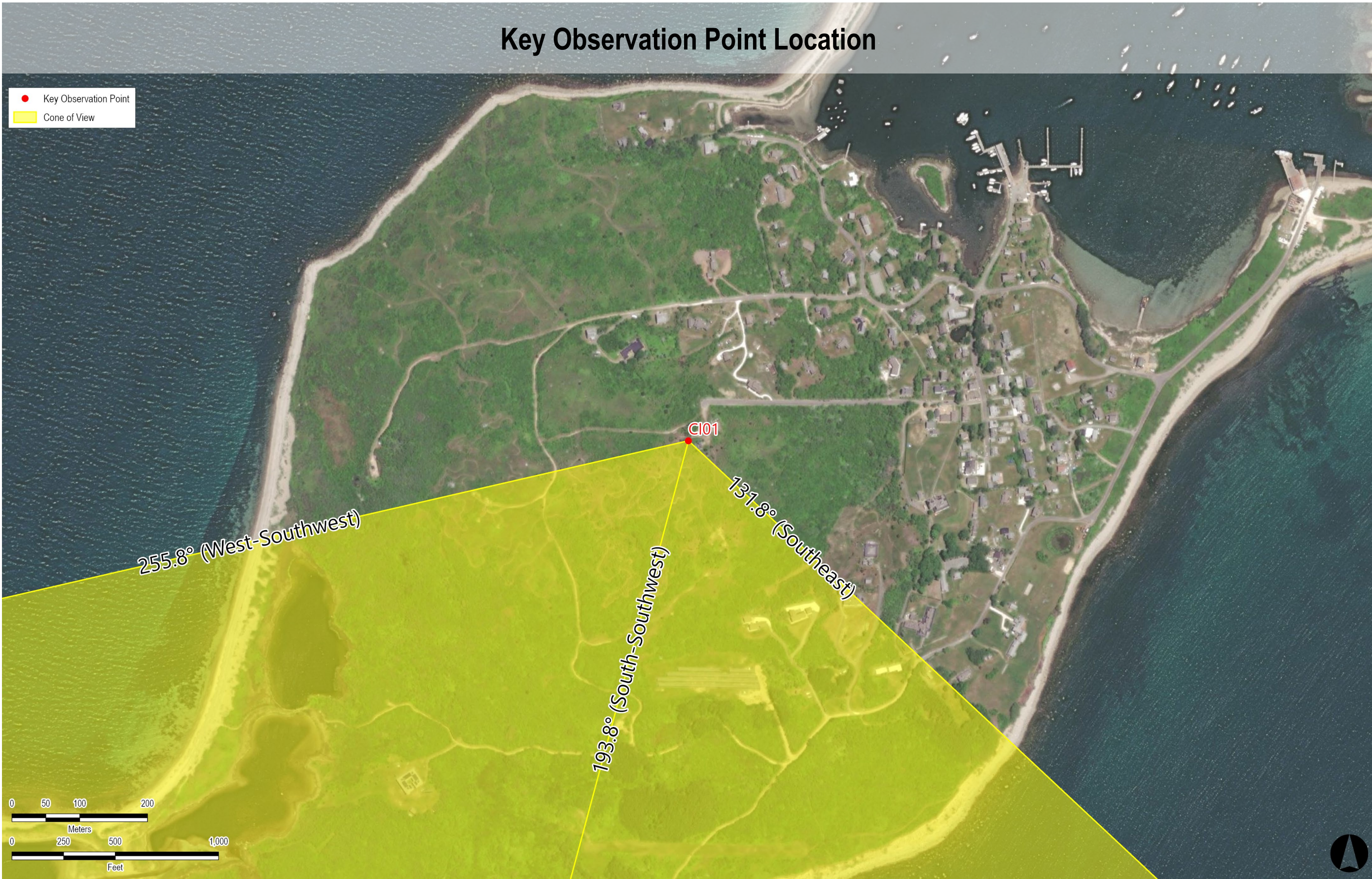
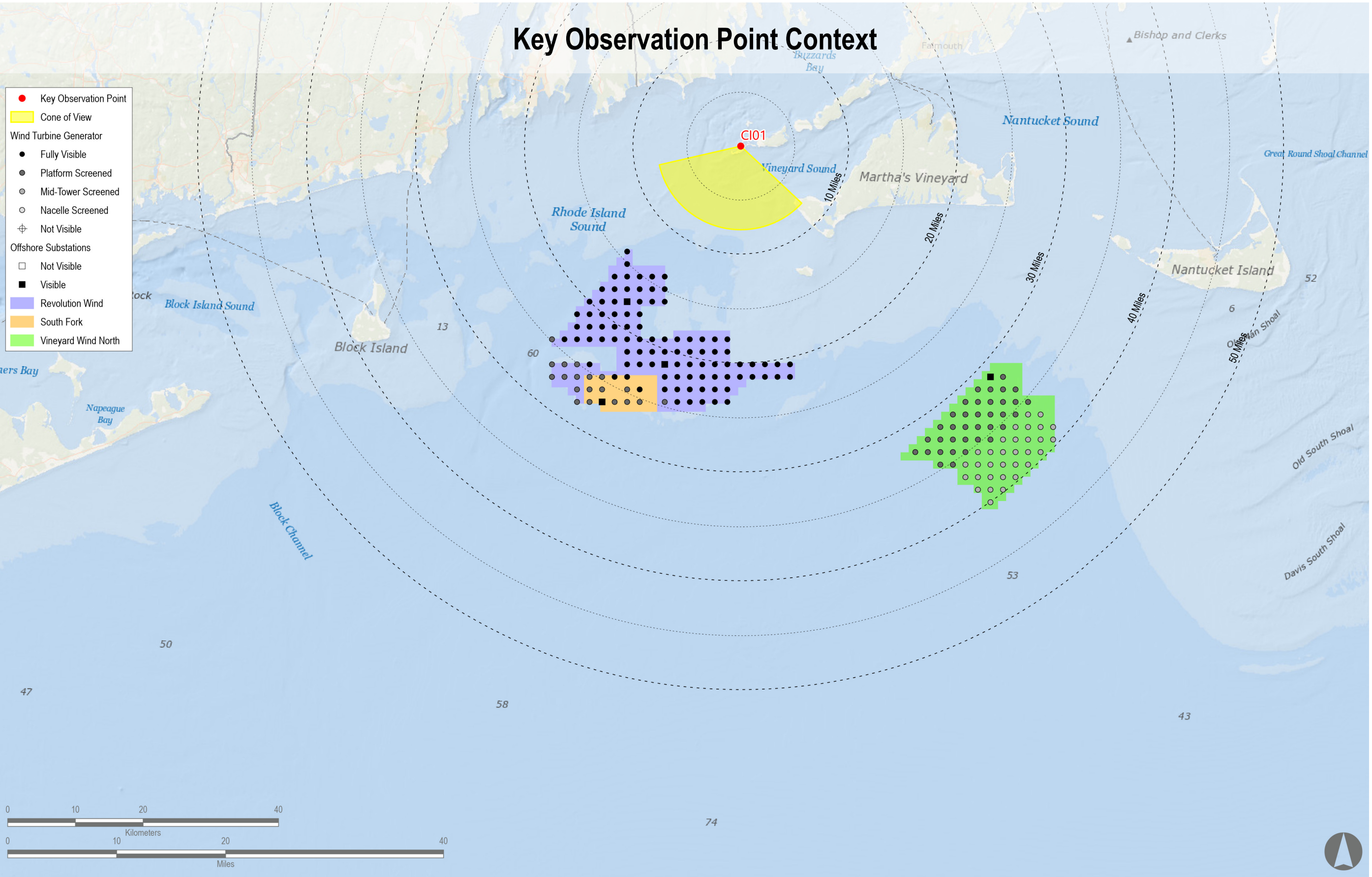
County: Dukes  
Town: Gosnold  
State: Massachusetts  
Location: Cuttyhunk Island  
Latitude, Longitude: 41.42052° N, 70.93411° W  
Direction of View (Center): South-Southwest (193.8°)  
Field of View: 124° x 55°

Visual Resources

Landscape Similarity Zone: Coastal Scrub/Scrub Forest  
User Group: Local Resident, Tourist/Vacationers  
Aesthetic Resource: Elizabeth Islands State Scenic Area, Buzzards Bay

Reasonably Foreseeable Projects Represented in Visual Simulation

Project	Year of Development	WTG Model	Potential Number of WTGs & OSSs Visible*	Total Number of WTGs & OSSs in Project	Distance to Nearest Visible WTG (miles)	Distance to Furthest Visible WTG (miles)
South Fork Wind Farm	2023	12 MW	13	13	23.6	27.3
Vineyard Wind North	2023	14 MW	69	69	31.2	39.9
Revolution Wind	2023	12 MW	102	102	13.9	27.9







Revolution Wind

Powered by Ørsted & Eversource

Appendix A: Revolution Wind Cumulative Visual Simulations

CI01: Cuttyhunk Island, Gosnold, Massachusetts

Visual Simulation: Full Lease Build-out Including Revolution Wind

Simulation Size: 66" in width by 29.3" in height. Images should be viewed from a distance of 15 inches in order to obtain the proper perspective.

This box should be easily 1" long on the printed panorama.

Environmental Data

Date Taken: 1/18/2018  
Time: 1:30 PM  
Temperature: 25°F  
Humidity: 68%  
Visibility: >10 miles  
Wind Direction: North-Northwest  
Wind Speed: 7 mph  
Conditions Observed: Clear

Camera Information

Camera: Canon EOS 5D Mark IV  
Resolution: 30.4 Megapixels  
Lens Focal Length: 50 mm  
Camera Height: 151.3 feet AMSL

Notes:

- Photosimulation Size: 66" in width by 29.3" in height. Images should be viewed from 15 inches in order to obtain the proper perspective.
- The potential number of WTGs and OSSs screened from view was calculated using a curvature of the earth model based on the distance, viewer height, and maximum structure height. This analysis does not consider the screening effects of intervening vegetation, structures, and topography.
- Offshore Substation location and dimensions are based on preliminary publicly available project data. Projects for which this data is not currently available, WTGs are used for all foundation positions, OSS positions and dimensions considered in this photosimulation are subject to potential modification.
- Nighttime photosimulations are digitally adjusted from daytime photographs. Nighttime photographs captured at each represented KOP inform the presence or lack of existing light sources.
- The existing WTGs associated with the Block Island Wind Farm are 16.9 miles from KOP US4. In the daytime photosimulation, the WTGs appear faint due to atmospheric perspective commonly occurring on clear days such as the conditions illustrated in this photosimulation. In order to illustrate maximum potential visibility of the proposed WTG, this degree of atmospheric perspective is not applied to the photosimulations.
- Photographs were not obtained from NL01 during field review due to public access restrictions. In place of an actual photograph from this location, EDR created a virtual three-dimensional (3D) model of the island.

Key Observation Point Information

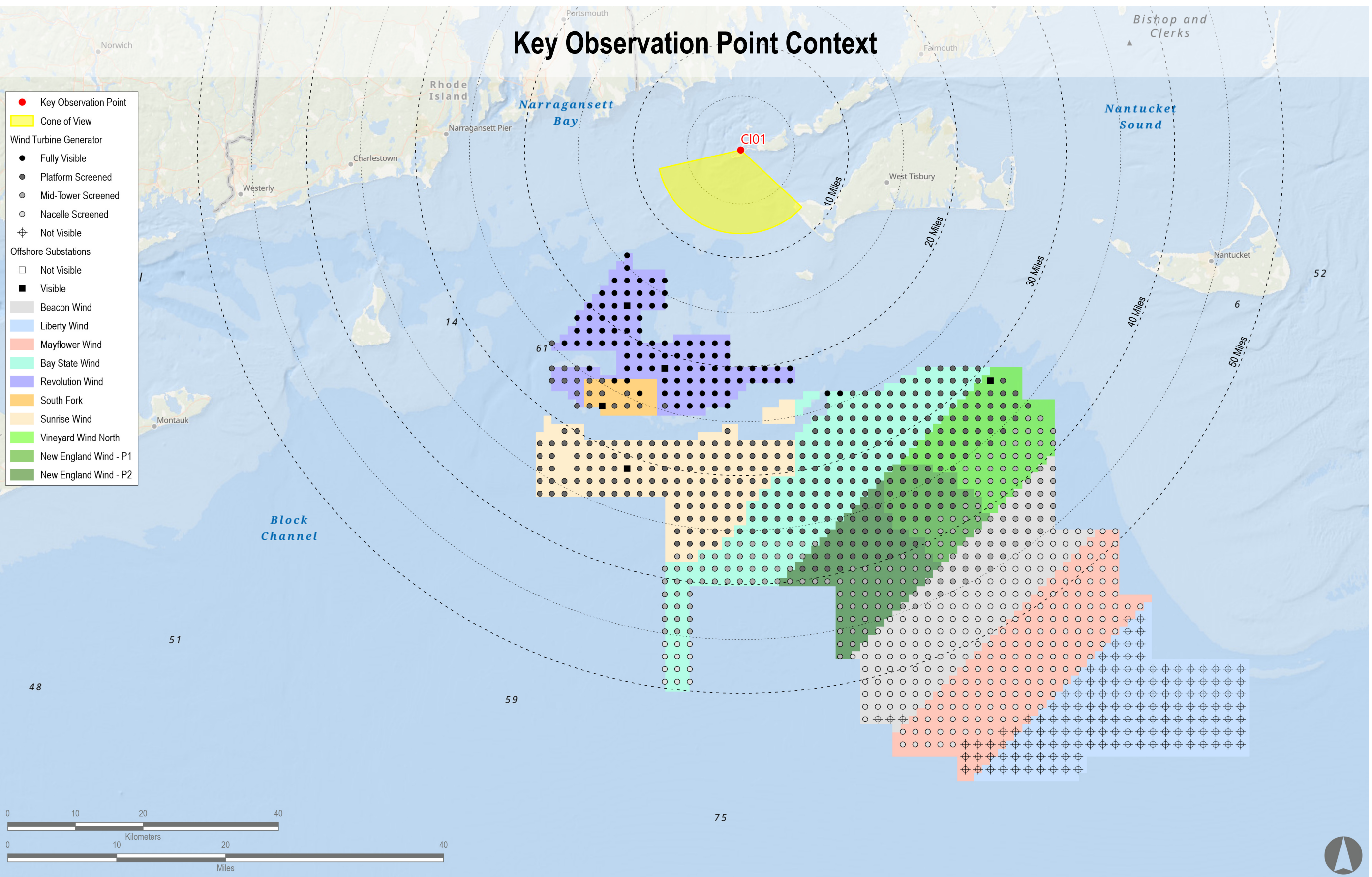
County: Dukes  
Town: Gosnold  
State: Massachusetts  
Location: Cuttyhunk Island  
Latitude, Longitude: 41.42052° N, 70.93411° W  
Direction of View (Center): South-Southwest (193.8°)  
Field of View: 124° x 55°

Visual Resources

Landscape Similarity Zone: Coastal Scrub/Scrub Forest  
User Group: Local Resident, Tourist/Vacationers  
Aesthetic Resource: Elizabeth Islands State Scenic Area, Buzzards Bay

Reasonably Foreseeable Projects Represented in Visual Simulation

Project	Year of Development	WTG Model	Potential Number of WTGs & OSSs Visible*	Total Number of WTGs & OSSs in Project	Distance to Nearest Visible WTG (miles)	Distance to Furthest Visible WTG (miles)
South Fork Wind Farm	2023	12 MW	13	13	23.6	27.3
Vineyard Wind North	2023	14 MW	69	69	31.2	39.9
Revolution Wind	2023	12 MW	102	102	13.9	27.9
New England Wind Phase 1	2024	16 MW	41	41	32.8	41.6
New England Wind Phase 2	2024	19 MW	79	79	32.9	47.4
Sunrise Wind	2024	15 MW	123	123	25.8	37.8
Mayflower Wind	2024	12 MW	138	149	48.3	58.2
Liberty Wind	2025-2030	12 MW	0	139	NA	NA
Beacon Wind	2025-2030	12 MW	154	157	40.2	53.6
Bay State Wind	2025-2030	12 MW	185	185	23.7	49.4







Revolution Wind

Powered byØrsted &Eversource

Appendix A: Revolution Wind Cumulative Visual Simulations

CI01: Cuttyhunk Island, Gosnold, Massachusetts

Visual Simulation: Full Lease Build-out Excluding Revolution Wind

Simulation Size: 66" in width by 29.3" in height. Images should be viewed from a distance of 15 inches in order to obtain the proper perspective.

This box should be easily 1" long on the printed panorama.

Environmental Data

Date Taken: 1/18/2018  
Time: 1:30 PM  
Temperature: 25°F  
Humidity: 68%  
Visibility: >10 miles  
Wind Direction: North-Northwest  
Wind Speed: 7 mph  
Conditions Observed: Clear

Camera Information

Camera: Canon EOS 5D Mark IV  
Resolution: 30.4 Megapixels  
Lens Focal Length: 50 mm  
Camera Height: 151.3 feet AMSL

Notes:

- Photosimulation Size: 66" in width by 29.3" in height. Images should be viewed from 15 inches in order to obtain the proper perspective.
- The potential number of WTGs and OSSs screened from view was calculated using a curvature of the earth model based on the distance, viewer height, and maximum structure height. This analysis does not consider the screening effects of intervening vegetation, structures, and topography.
- Offshore Substation location and dimensions are based on preliminary publicly available project data. Projects for which this data is not currently available. WTGs are used for all foundation positions. OSS positions and dimensions considered in this photosimulation are subject to potential modification.
- Nighttime photosimulations are digitally adjusted from daytime photographs. Nighttime photographs captured at each represented KOP inform the presence or lack of existing light sources.
- The existing WTGs associated with the Block Island Wind Farm are 16.9 miles from KOP1 USA. In the daytime photosimulation, the WTGs appear faint due to atmospheric perspective commonly occurring on clear days such as the conditions illustrated in this photosimulation. In order to illustrate maximum potential visibility of the proposed WTG, this degree of atmospheric perspective is not applied to the photosimulations.
- Photographs were not obtained from N101 during field review due to public access restrictions. In place of an actual photograph from this location, EDR created a virtual three-dimensional (3D) model of the island.

Key Observation Point Information

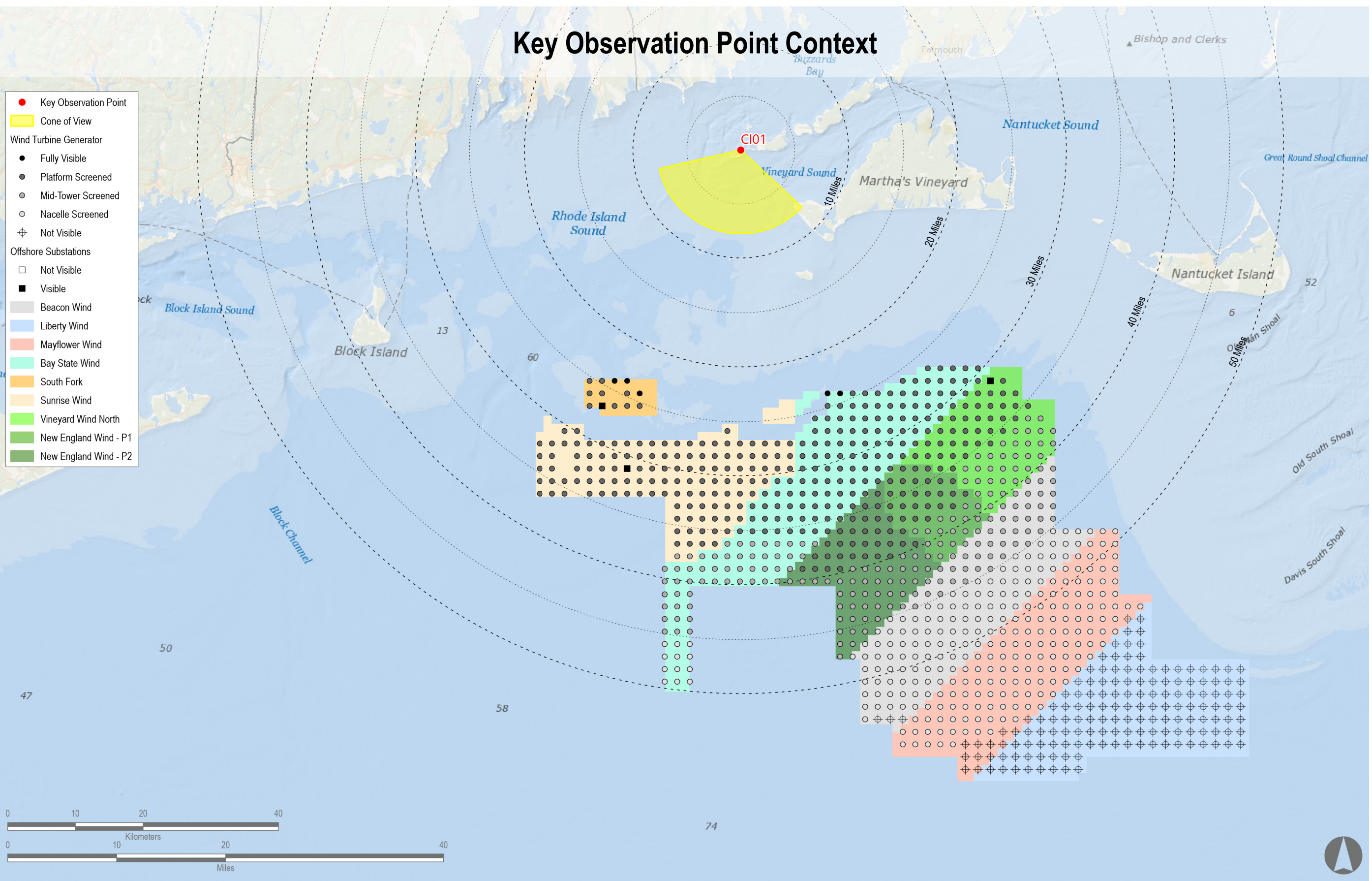
County: Dukes  
Town: Gosnold  
State: Massachusetts  
Location: Cuttyhunk Island  
Latitude, Longitude: 41.42052° N, 70.93411° W  
Direction of View (Center): South-Southwest (193.8°)  
Field of View: 124° x 55°

Visual Resources

Landscape Similarity Zone: Coastal Scrub/Scrub Forest  
User Group: Local Resident, Tourist/Vacationers  
Aesthetic Resource: Elizabeth Islands State Scenic Area, Buzzards Bay

Reasonably Foreseeable Projects Represented in Visual Simulation

Project	Year of Development	WTG Model	Potential Number of WTGs & OSSs Visible*	Total Number of WTGs & OSSs in Project	Distance to Nearest Visible WTG (miles)	Distance to Furthest Visible WTG (miles)
South Fork Wind Farm	2023	12 MW	13	13	23.6	27.3
Vineyard Wind North	2023	14 MW	69	69	31.2	39.9
New England Wind Phase 1	2024	16 MW	41	41	32.8	41.6
New England Wind Phase 2	2024	19 MW	79	79	32.9	47.4
Sunrise Wind	2024	15 MW	123	123	25.8	37.8
Mayflower Wind	2024	12 MW	138	149	48.3	58.2
Liberty Wind	2025-2030	12 MW	0	139	NA	NA
Beacon Wind	2025-2030	12 MW	154	157	40.2	53.6
Bay State Wind	2025-2030	12 MW	185	185	23.7	49.4







Revolution Wind

Powered byØrsted & Eversource

Appendix A: Revolution Wind Cumulative Visual Simulations

CI01: Cuttyhunk Island, Gosnold, Massachusetts

Visual Simulation: Revolution Wind Without Other Foreseeable Future Changes

Simulation Size: 66" in width by 29.3" in height. Images should be viewed from a distance of 15 inches in order to obtain the proper perspective.

This box should be easily "fit" long on the printed panorama.

**Environmental Data**  
Date Taken: 1/18/2018  
Time: 1:30 PM  
Temperature: 25°F  
Humidity: 68%  
Visibility: >10 miles  
Wind Direction: North-Northwest  
Wind Speed: 7 mph  
Conditions Observed: Clear

**Camera Information**  
Camera: Canon EOS 5D Mark IV  
Resolution: 30.4 Megapixels  
Lens Focal Length: 50 mm  
Camera Height: 151.3 feet AMSL

Notes:

- Photosimulation Size: 66" in width by 29.3" in height. Images should be viewed from 15 inches in order to obtain the proper perspective.
- The potential number of WTGs and OSSs screened from view was calculated using a curvature of the earth model based on the distance, viewer height, and maximum structure height. This analysis does not consider the screening effects of intervening vegetation, structures, and topography.
- Offshore Substation location and dimensions are based on preliminary publicly available project data. Projects for which this data is not currently available, WTGs are used for all foundation positions, OSS positions and dimensions considered in this photosimulation are subject to potential modification.
- Nighttime photosimulations are digitally adjusted from daytime photographs. Nighttime photographs captured at each represented KOP inform the presence or lack of existing light sources.
- The existing WTGs associated with the Block Island Wind Farm are 16.9 miles from KOP USA. In the daytime photosimulation, the WTGs appear faint due to atmospheric perspective commonly occurring on clear days such as the conditions illustrated in this photosimulation. In order to illustrate maximum potential visibility of the proposed WTG, this degree of atmospheric perspective is not applied to the photosimulations.
- Photographs were not obtained from NL01 during field review due to public access restrictions. In place of an actual photograph from this location, EDR created a virtual three-dimensional (3D) model of the island.

Key Observation Point Information

County: Dukes  
Town: Gosnold  
State: Massachusetts  
Location: Cuttyhunk Island  
Latitude, Longitude: 41.42052° N, 70.93411° W  
Direction of View (Center): South-Southwest (193.8°)  
Field of View: 124° x 55°

Visual Resources

Landscape Similarity Zone: Coastal Scrub/Scrub Forest  
User Group: Local Resident, Tourist/Vacationers  
Aesthetic Resource: Elizabeth Islands State Scenic Area, Buzzards Bay

Reasonably Foreseeable Projects Represented in Visual Simulation

Project	Year of Development	WTG Model	Potential Number of WTGs & OSSs Visible*	Total Number of WTGs & OSSs in Project	Distance to Nearest Visible WTG (miles)	Distance to Furthest Visible WTG (miles)
Revolution Wind	2023	12 MW	102	102	13.9	27.9

