



BOEM Bureau of
Ocean Energy Management

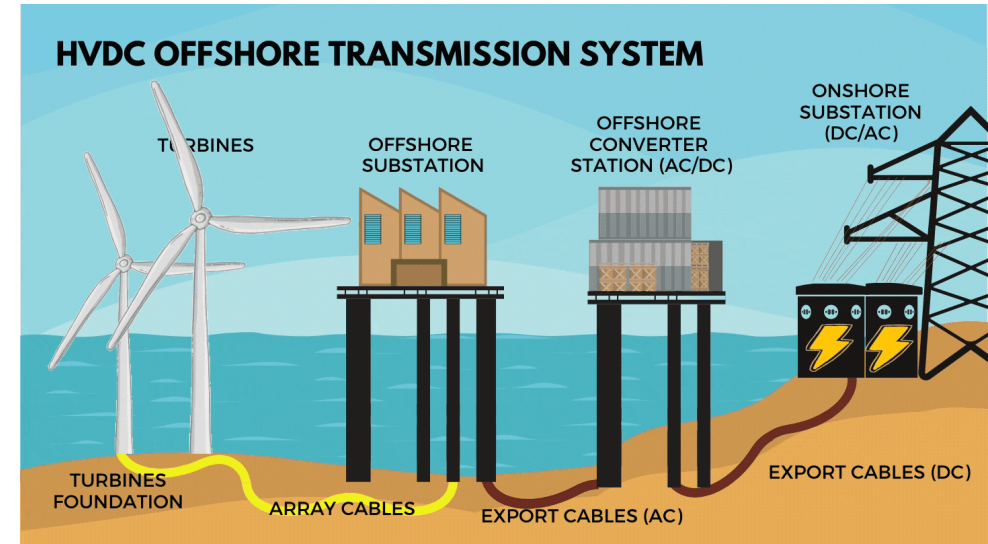
Offshore Wind Transmission

Gulf of Maine Task Force

May 31, 2024

Two Paths

1. Transmission as part of an offshore wind lease
 - 585.200(b) - a lease confers the right to one or more project easements without further competition for transmission
2. Transmission under a Right-of-Way (ROW) Grant
 - 585.300 - an ROW grant authorizes the holder to install on the OCS cables, pipelines, and associated facilities that involve the transportation or transmission of electricity or other energy product from renewable energy projects.



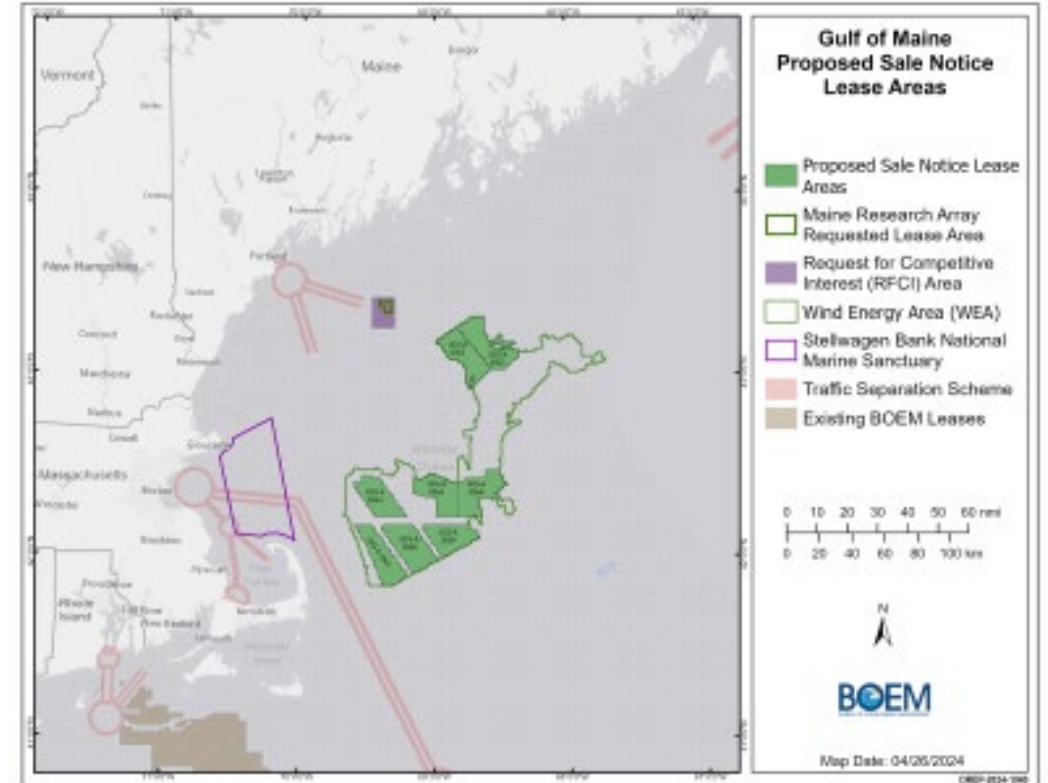
Roles in Transmission Planning

1. Federal Government
 - BOEM
 - FERC
 - Permitting Agencies – Natural Resources, etc.
 - NOAA - Sanctuaries
2. Grid Operators
 - Independent System Operator – New England
3. State Role
 - Renewable Energy Goals/Legislation
 - Conditions in Offtake Agreements
 - State Utilities
 - Property Interests in Landfall Connection Points



Alignment with State & Regional Initiatives

- Planned approach transmission requires close coordination with states
 - Any ROW for transmission to land requires issuance of state grant in state waters and on land
- Timing
 - Desire to avoid stranded assets
 - ROW process has shorter minimum time than lease development
- Easements to existing offshore transmission infrastructure
- RTO/ISO studies & plans



Considerations and Reference Used to Evaluate Siting

- Statutory Requirements (OCSLA 1337(p)(4))
 - Prevention of waste
 - Conservation of the natural resource of the OCS
 - Protection of the environment
- Minimization of conflict with other ocean uses and sensitive areas
 - Fisheries
 - Sand & Gravel Resources
 - Other Cables
 - Benthic Conditions
 - Navigation
 - DoD
 - Sensitive Habitat
 - Cultural Resources
- NEPA & Associated Consultations
- BOEM Offshore Wind Cable Spacing Guidance
- Marine Cadastre & Ocean Data Portals



Lease Conditions & Transmission Planning

- Final sales notices since NY Bight state that BOEM may condition Construction and Operations Plan (COP) approval on the use of cable corridors, regional transmission systems, meshed systems, and other mechanisms where appropriate
- Lease stipulations requiring seeking input from Tribal Nations and other ocean users prior to proposing easements
- Communication plans requirements in the leases
- Meshed requirements or shared/overbuilt transmission infrastructure incorporation in COP



Efforts to Improve Transmission Coordination

- DOE-BOEM Recommendations and Action Plan for OSW Transmission Development in the Atlantic
- Regulatory Guidance
 - Process & Timing for Complex Shared Transmission
 - Modernization Rulemaking – State/RTO/ISO
- Continued Collaboration with DOE & NOAA's NCCOS



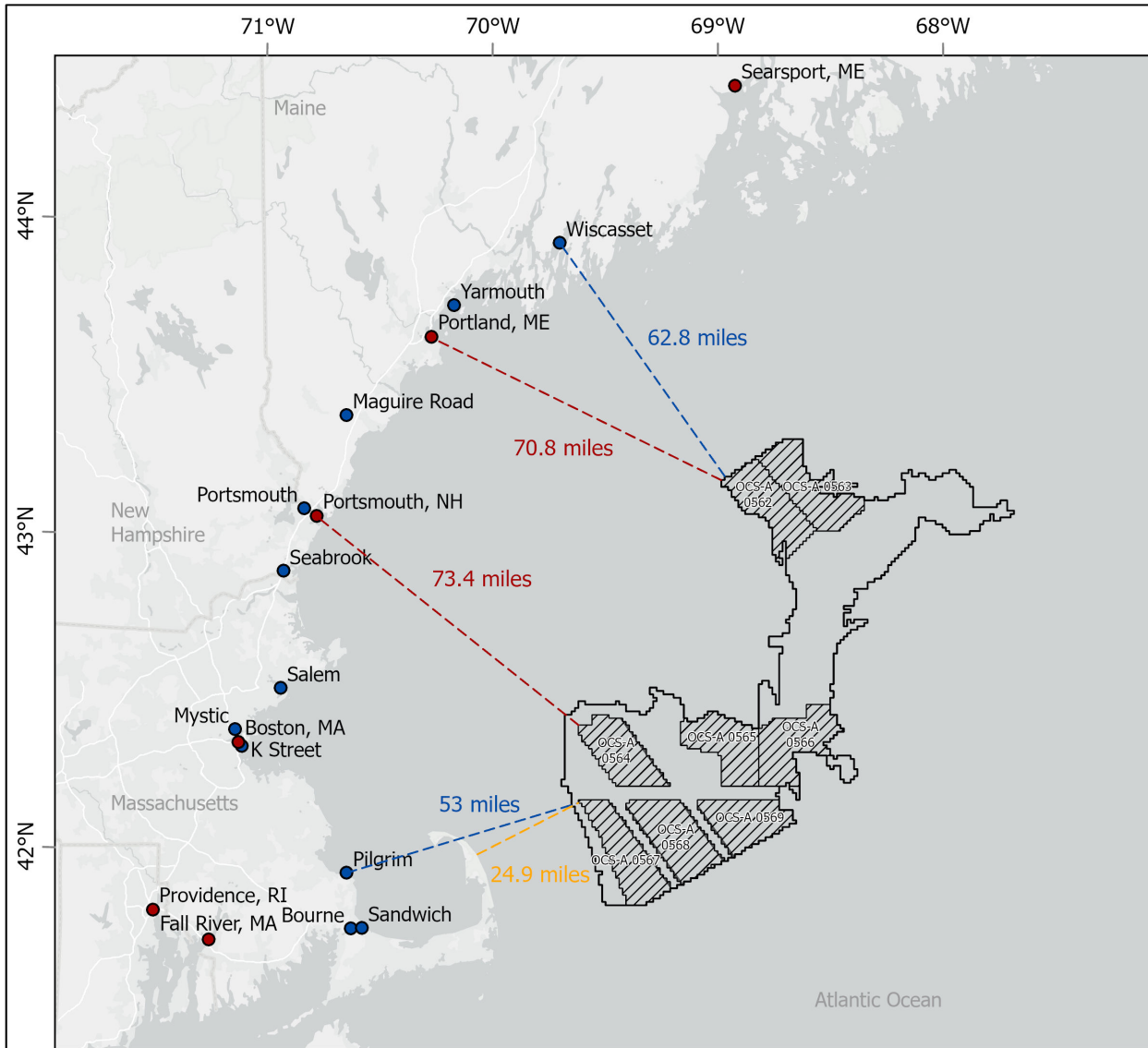
BOEM

Bureau of Ocean Energy
Management

BOEM.gov



Josh Gange, OREP, joshua.gange@boem.gov

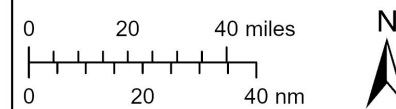


Distance to Shore, Principal Ports and Points of Interconnection

- Final WEA
- Principal Ports
- Points of Interconnection
- Shortest Distance to Principal Port
- Shortest Distance to Point of Interconnection
- Shortest Distance to Mainland
- Proposed Sale Notice Lease Areas
- No Surface or Subsurface Occupancy

Scale: 1:2,000,000

Reference System: NAD 1983 UTM Zone 19N



Service Layer Credits: World Light Gray Canvas Base: Esri, TomTom, Garmin, FAO, NOAA, USGS, EPA, NPS, USFWS

Principal Ports. NOAA Office for Coastal Management. 2019. Principal Ports are the top 150 U.S. ports based upon total annual tonnage. Variation in annual tonnage at a port may result in exclusion or inclusion on the Principal Port list. Points of Interconnection include: Wiscasset, Yarmouth, Maguire Road, Portsmouth, Seabrook, Salem, Mystic, K Street, Pilgrim, Sandwich, and Bourne.

