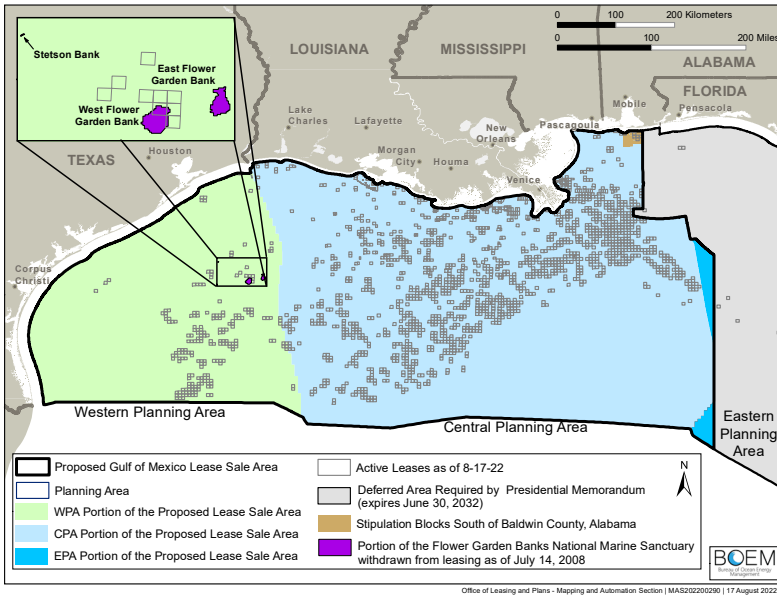


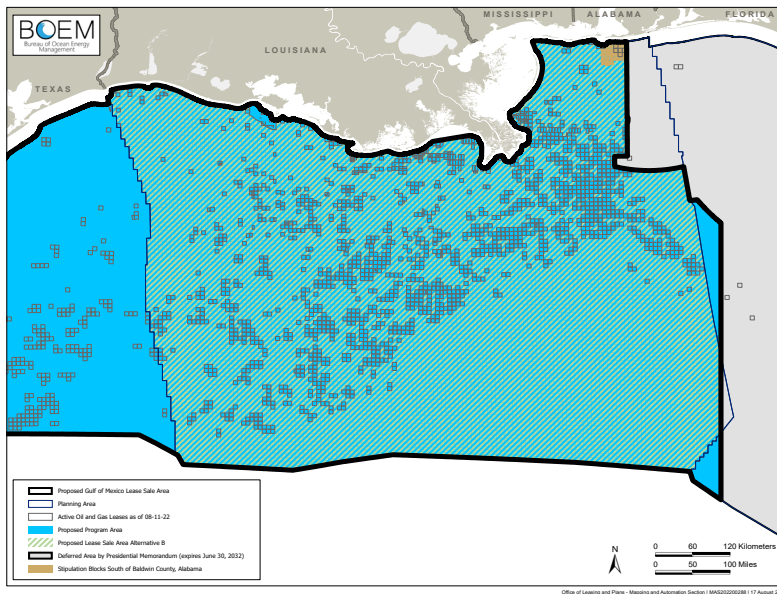
### Alternative A



**Alternative A** would allow for a GOM lease sale encompassing the three GOM planning areas of the WPA, CPA, and EPA not currently under Presidential withdrawal, with the following exceptions:

1. whole and portions of blocks currently under Presidential withdrawal;
2. blocks that are adjacent to or beyond the United States' Exclusive Economic Zone; and
3. whole and partial blocks within the boundaries of the Flower Garden Banks National Marine Sanctuary as of the July 2008 Memorandum on Withdrawal of Certain Areas of U.S. OCS from Leasing Disposition.

### Alternative B



**Alternative B** would offer for lease all available unleased blocks within the CPA and EPA portions of the proposed lease sale area for oil and gas operations, with the following exceptions:

1. whole and portions of blocks currently under Presidential withdrawal; and
2. blocks that are adjacent to or beyond the United States' Exclusive Economic Zone.

