

Brenton Point State Park

Viewpoint Information

County: Newport
 Town: Newport
 State: Rhode Island
 Location: Aquidneck Island
 Coordinates: 41.45037° N, 71.35476° W
 Direction of View: South-Southeast (147.4°)
 Distance to Nearest Visible Turbine: 16.9 miles

Environmental Data

Date Taken: 7/26/2017
 Time: 4:45 PM
 Temperature: 72.0 °F
 Humidity: 68%
 Visibility: >10 miles
 Wind Direction: South
 Wind Speed: 8.1 mph
 Conditions Observed: Clear

Visual Resources

Landscape Similarity Zone: Maintained Recreation Area
User Group: Local Residents, Tourists/Vacationers, Fishing Community
Aesthetic Resource: Newport/Ocean Drive State Scenic Area, Brenton Point State Park, Rhode Island Historic District, Ocean Drive National Historic Landmark

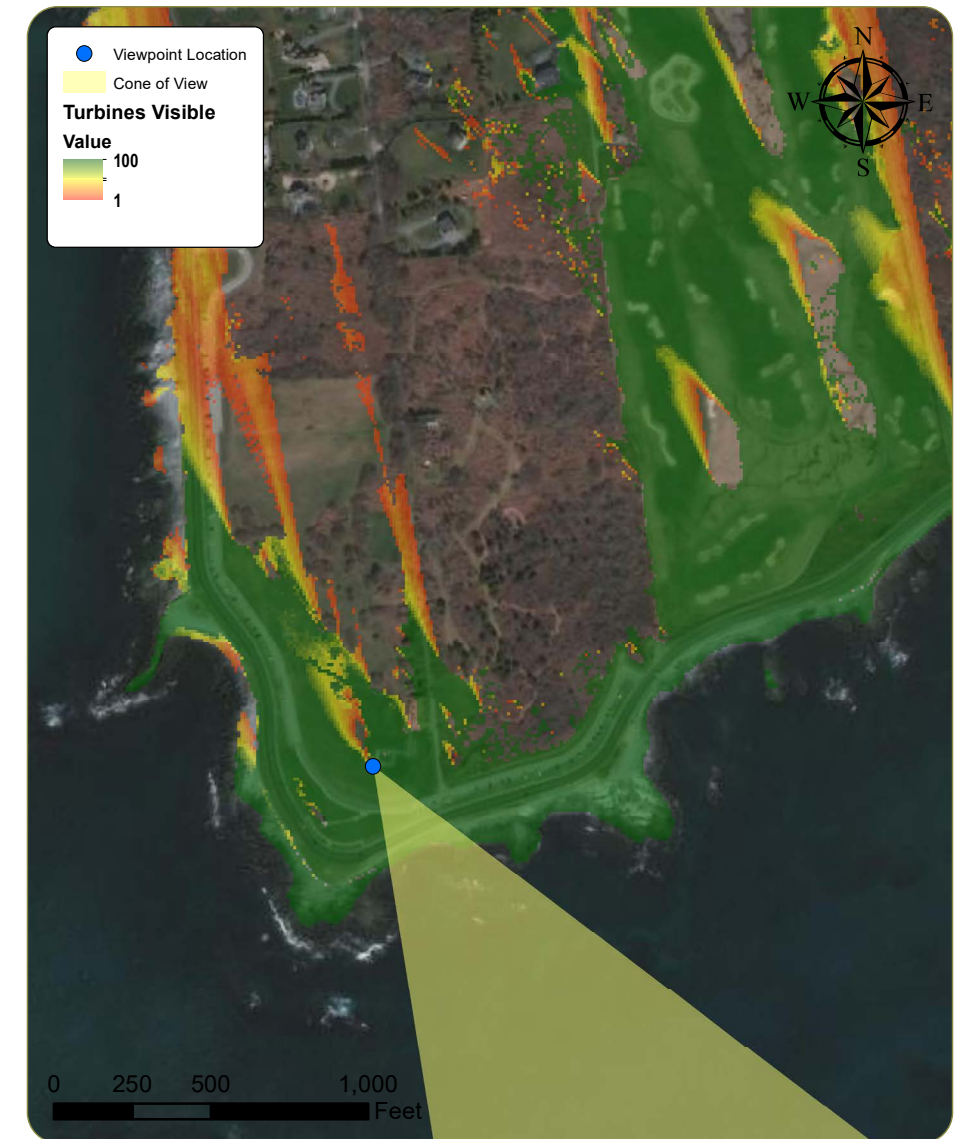
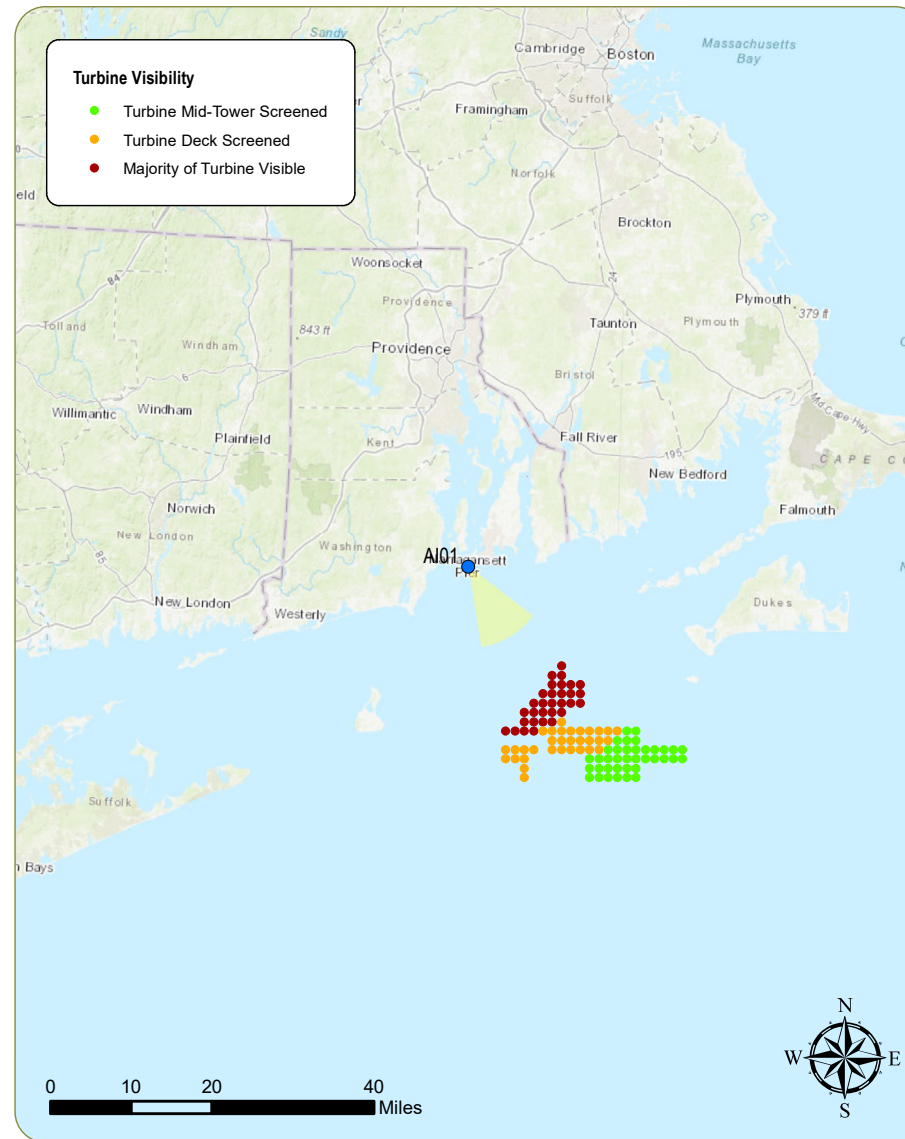
Notes: Block Island Wind Farm visible from this location at a distance of 23.8 miles.

Camera Information

Camera: Canon EOS 5D Mark IV
Resolution: 30.4 Megapixels
Lens Focal Length: 50 mm
Camera Height: 33.9 feet AMSL

Viewing Instructions:

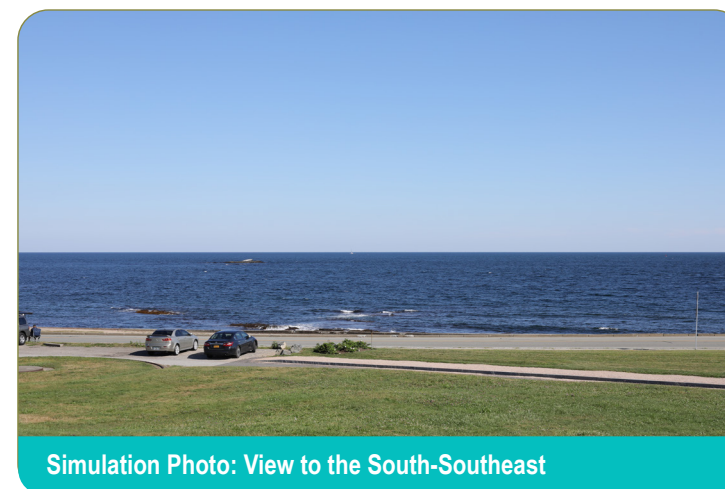
Printed at 100% the resulting simulation size is 15 inches wide by 10 inches high. At this size and focal length, the simulation should be viewed from a distance 21 inches.



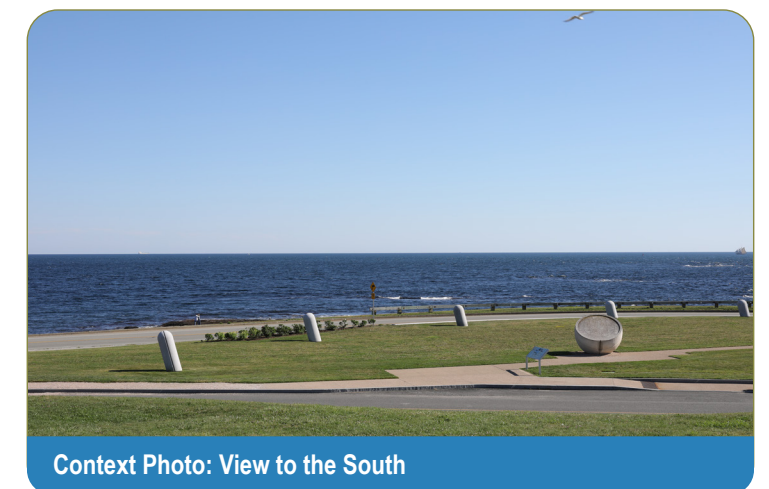
Context Photo: View to the Southeast



Simulation Photo: View to the South-Southeast



Simulation Photo: View to the South-Southeast



Context Photo: View to the South

Revolution Wind Farm

Outer Continental Shelf, OCS-A 0486

Viewpoint AI01: View from Brenton Point State Park, Newport

Appendix C: Sheet 1 of 153

Existing Conditions



This scale is designed to insure the simulation images are printed at the intended size.

Simulation



This scale is designed to insure the simulation images are printed at the intended size.

Existing Conditions



This scale is designed to insure the simulation images are printed at the intended size.

Simulation



This scale is designed to insure the simulation images are printed at the intended size.

Brenton Point State Park

Viewpoint Information

County: Newport

Town: Newport

State: Rhode Island

Location: Aquidneck Island

Coordinates: 41.45037° N, 71.35476° W

Direction of View: South-Southeast (147.4°)

Distance to Nearest Visible Turbine: 16.9 miles

Visual Resources

Landscape Similarity Zone: Maintained Recreation Area

User Group: Local Residents, Tourists/Vacationers, Fishing Community

Aesthetic Resource: Newport/Ocean Drive State Scenic Area, Brenton Point State Park, Rhode Island Historic District, Ocean Drive National Historic Landmark

Notes: Block Island Wind Farm visible from this location at a distance of 23.8 miles.

Environmental Data

Date Taken: 11/24/2017

Time: 5:11 PM

Temperature: 39.0 °F

Humidity: 87%

Visibility: >10 miles

Wind Direction: West

Wind Speed: 4.4 mph

Conditions Observed: Clear

Camera Information

Camera: Canon EOS 5D Mark IV

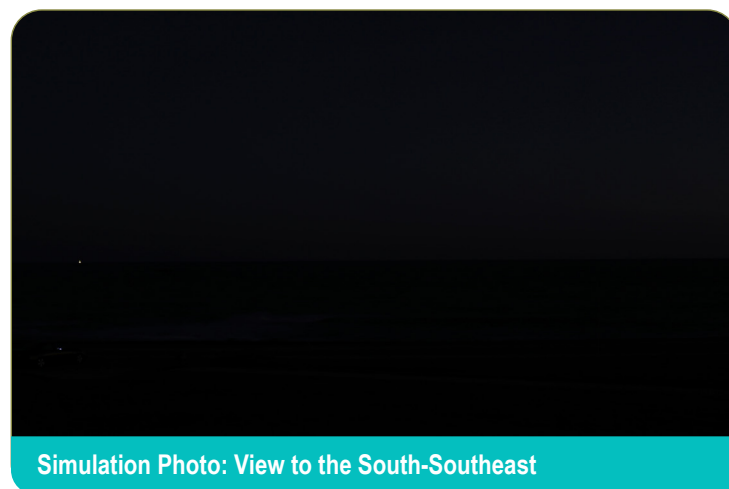
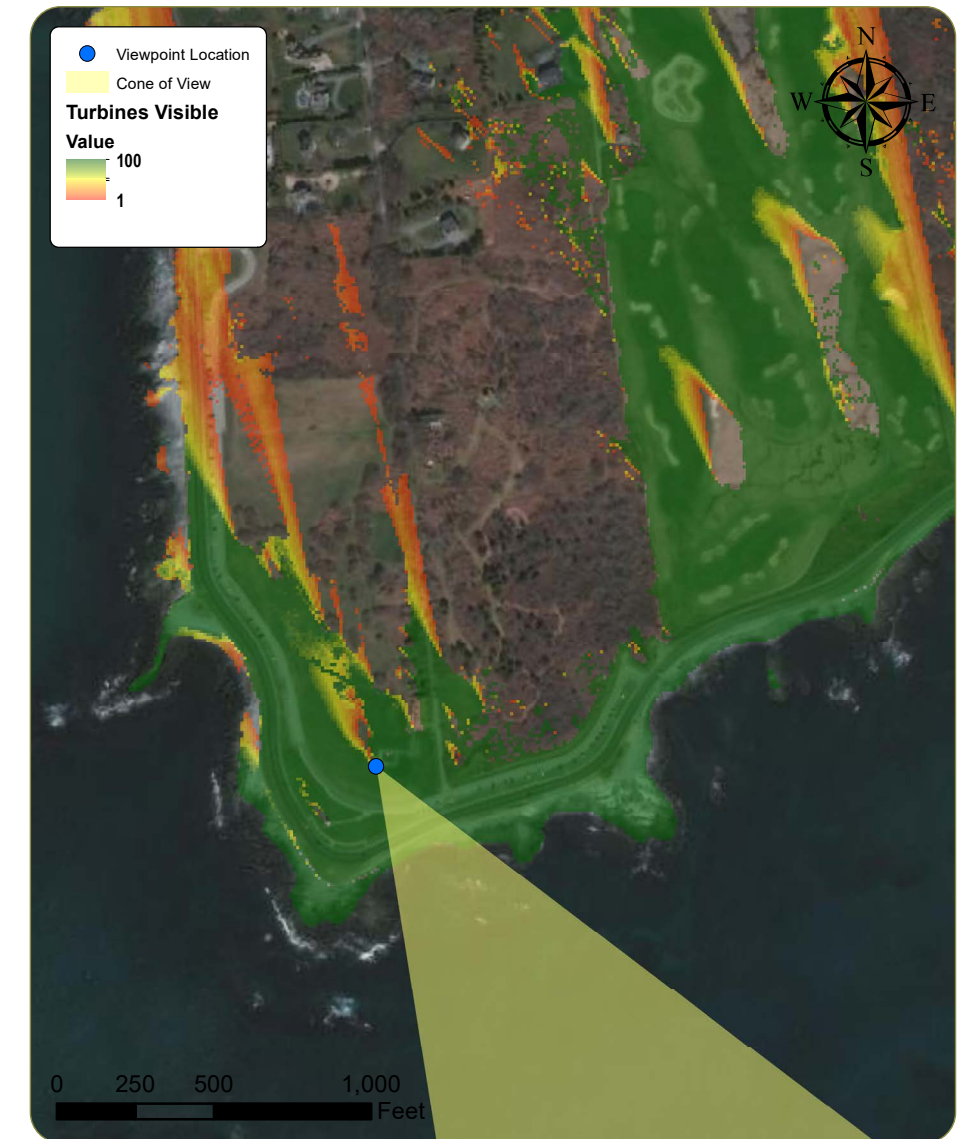
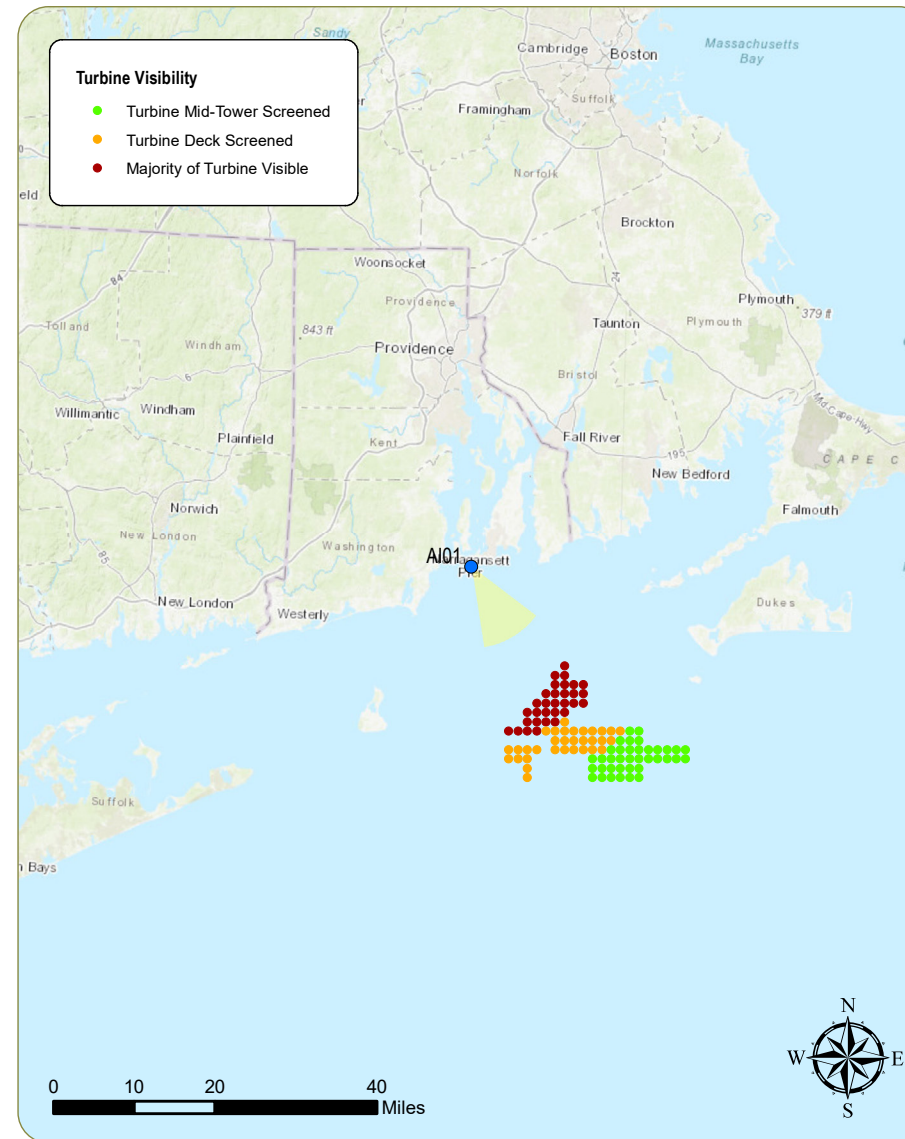
Resolution: 30.4 Megapixels

Lens Focal Length: 50 mm

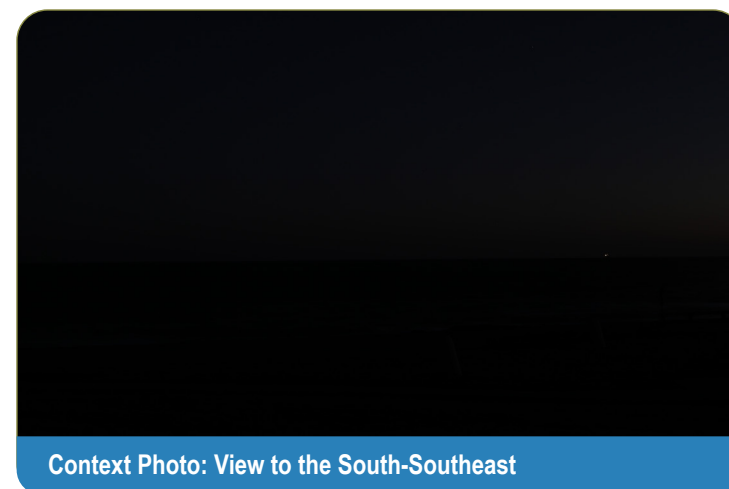
Camera Height: 34.9 feet AMSL

Viewing Instructions:

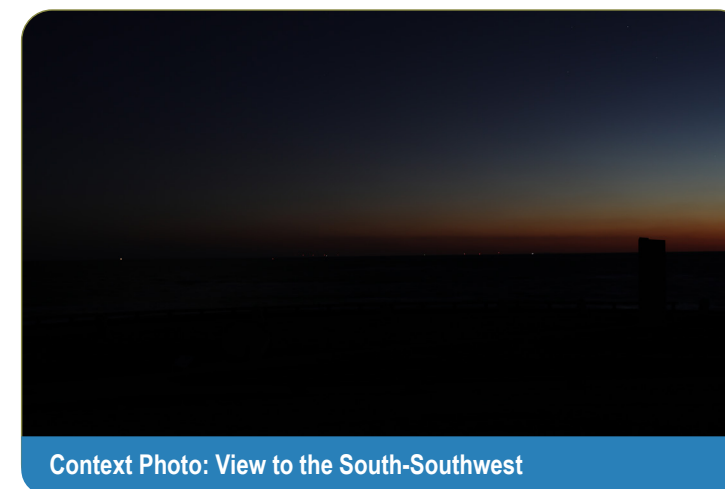
Printed at 100% the resulting simulation size is 15 inches wide by 10 inches high. At this size and focal length, the simulation should be viewed from a distance 21 inches.



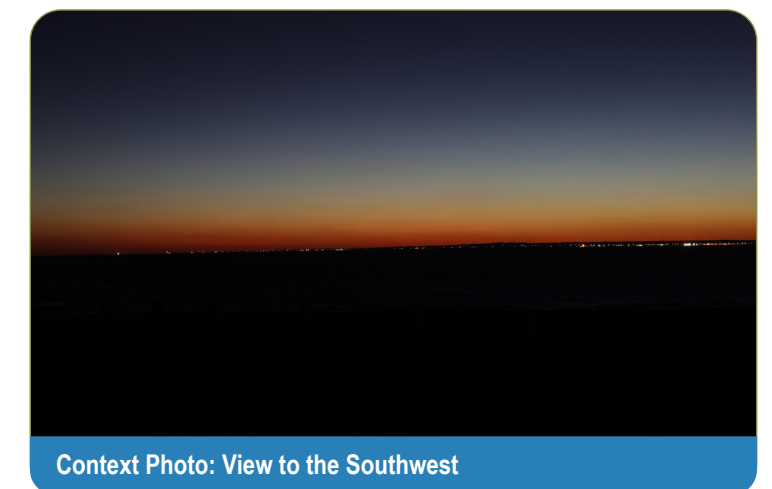
Simulation Photo: View to the South-Southeast



Context Photo: View to the South-Southeast



Context Photo: View to the South-Southwest



Context Photo: View to the Southwest

Revolution Wind Farm

Outer Continental Shelf, OCS-A 0486

Viewpoint AI01: Nighttime view from Brenton Point State Park, Newport

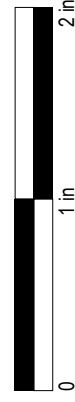
Appendix C: Sheet 6 of 153

Existing Conditions



This scale is designed to insure the simulation images are printed at the intended size.

Simulation



This scale is designed to insure the simulation images are printed at the intended size.

Newport Cliff Walk

Viewpoint Information

County: Newport

Town: Newport

State: Rhode Island

Location: Aquidneck Island

Coordinates: 41.45119° N, 71.31157° W

Direction of View: Southeast to South-Southeast (156.3°)

Distance to Nearest Visible Turbine: 15.4 miles

Visual Resources

Landscape Similarity Zone: Maintained Recreation Area, Shoreline Residential

User Group: Local Residents, Tourists/Vacationers

Aesthetic Resource: Newport/Ocean Drive State Scenic Area, Cliff Walk National Recreation Trail, Newport National Historic Landmark

Environmental Data

Date Taken: 7/26/2017

Time: 7:03 PM

Temperature: 70 °F

Humidity: 68%

Visibility: >10 miles

Wind Direction: South

Wind Speed: 8mph

Conditions Observed: Clear

Camera Information

Camera: Canon EOS 5D Mark IV

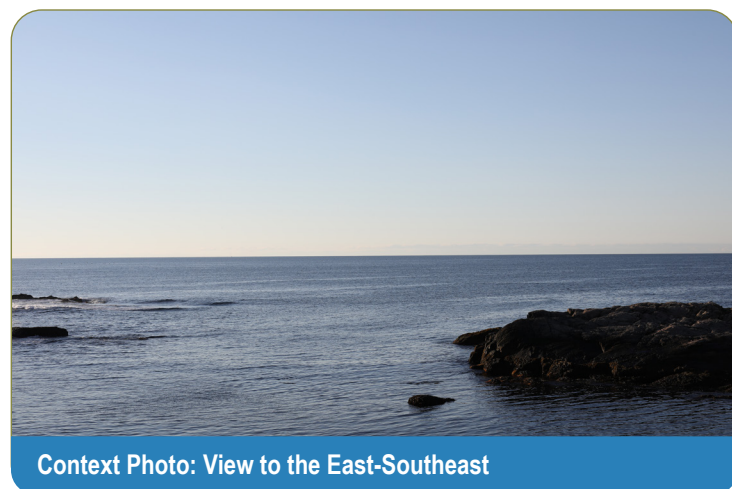
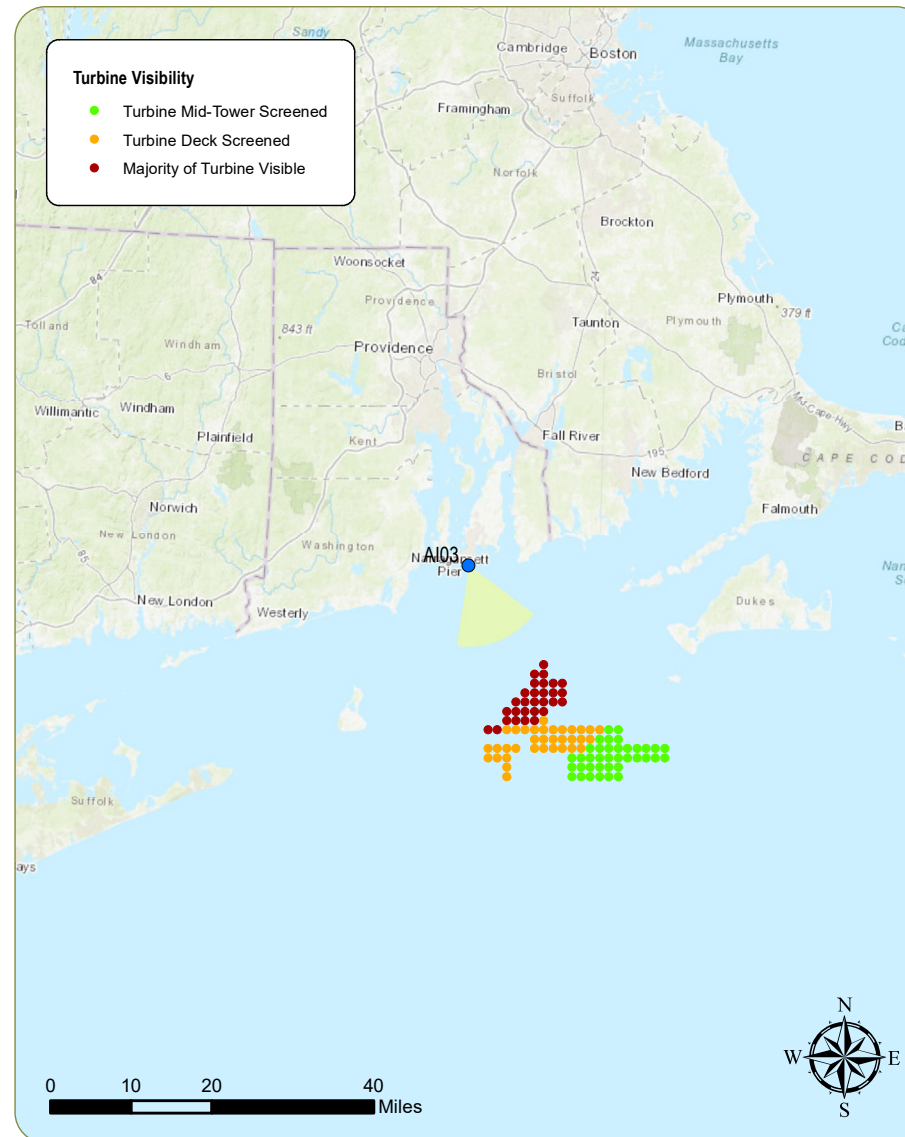
Resolution: 30.4 Megapixels

Lens Focal Length: 50 mm

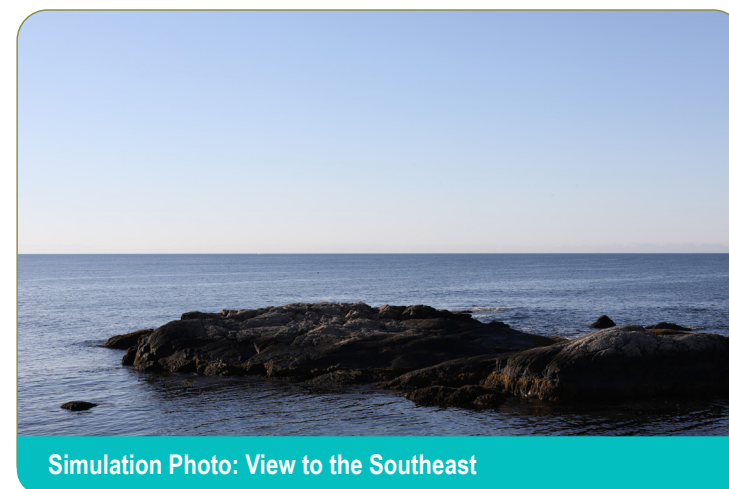
Camera Height: 22.8 feet AMSL

Viewing Instructions:

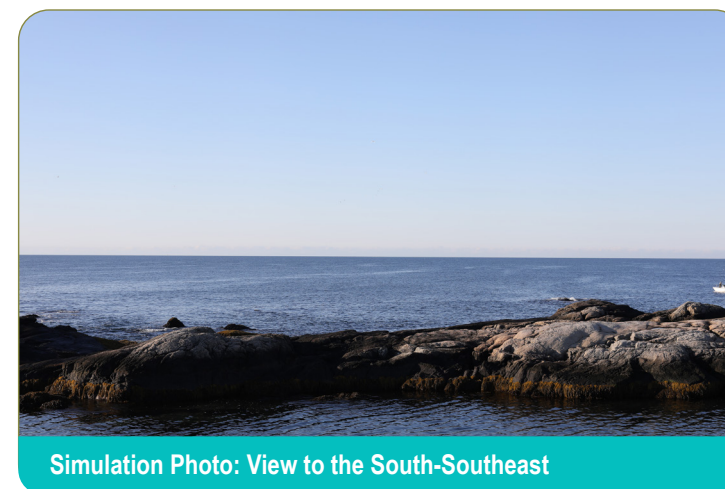
Printed at 100% the resulting simulation size is 15 inches wide by 10 inches high. At this size and focal length, the simulation should be viewed from a distance 21 inches.



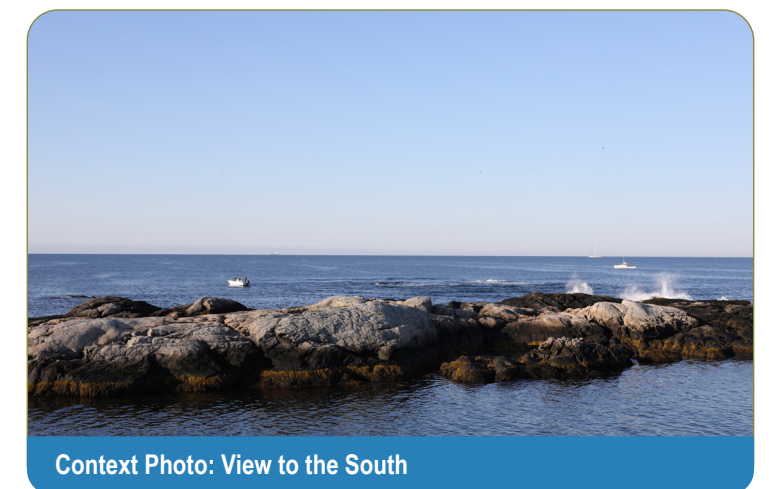
Context Photo: View to the East-Southeast



Simulation Photo: View to the Southeast



Simulation Photo: View to the South-Southeast



Context Photo: View to the South

Revolution Wind Farm

Outer Continental Shelf, OCS-A 0486

Viewpoint AI03: View from Newport Cliffwalk, Newport

Appendix C: Sheet 9 of 153

Existing Conditions



This scale is designed to insure the simulation images are printed at the intended size.

Simulation



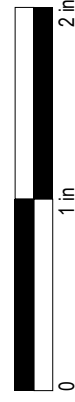
This scale is designed to insure the simulation images are printed at the intended size.

Existing Conditions



This scale is designed to insure the simulation images are printed at the intended size.

Simulation



This scale is designed to insure the simulation images are printed at the intended size.

Sachuest Point National Wildlife Refuge

Viewpoint Information

County: Newport
Town: Middletown
State: Rhode Island
Location: Aquidneck Island
Coordinates: 41.47269° N, 71.24720° W
Direction of View: South-Southeast (161.7°)
Distance to Nearest Visible Turbine: 14.9 miles

Visual Resources

Landscape Similarity Zone: Coastal Scrub/Scrub Forest
Viewer Type: Local Residents, Tourists/Vacationers
Aesthetic Resource: Sachuest Point National Wildlife Refuge, Sachuest Point State Scenic Area

Environmental Data

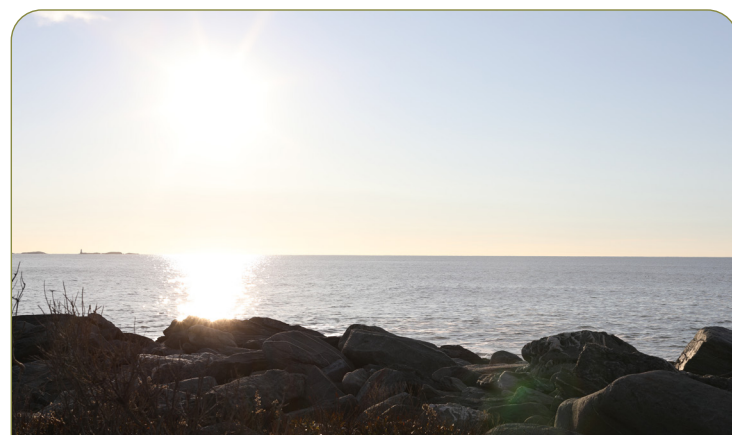
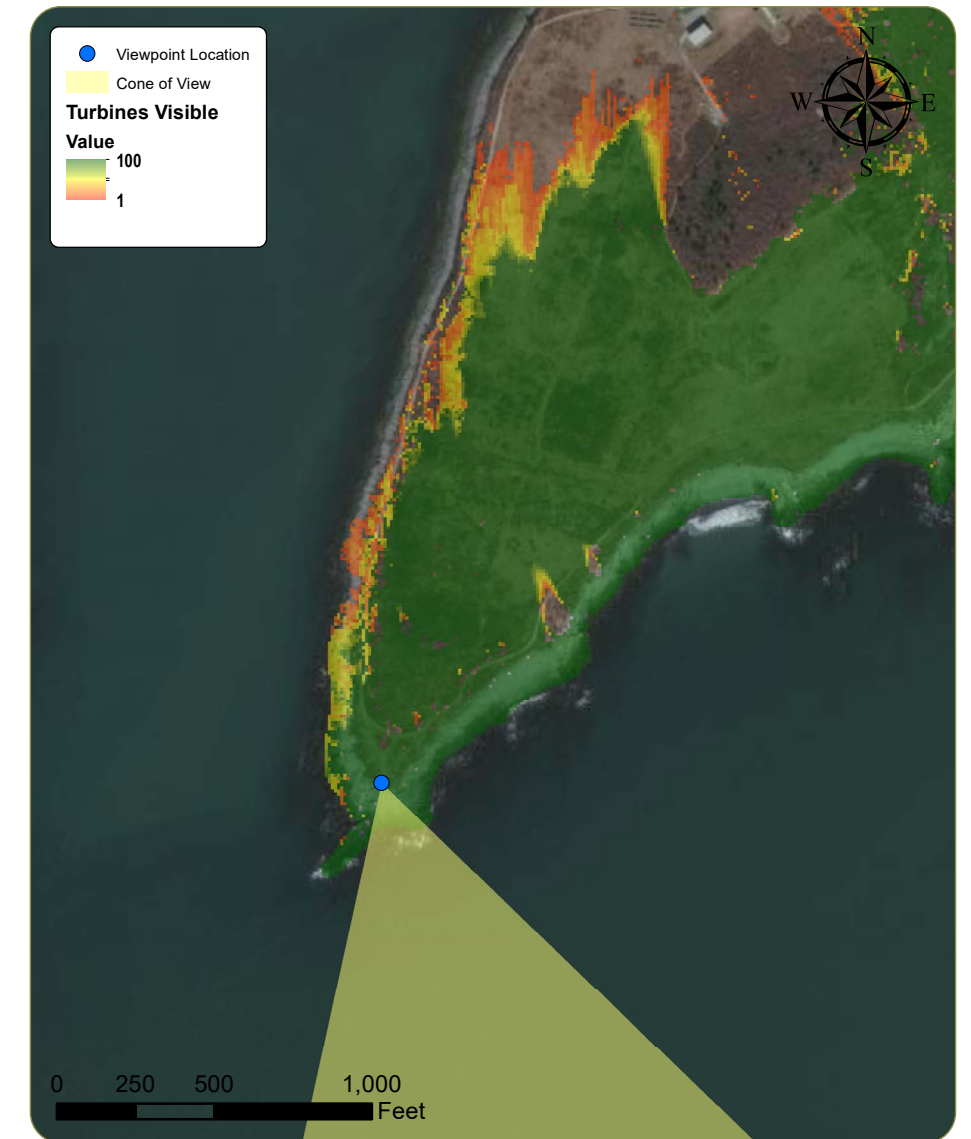
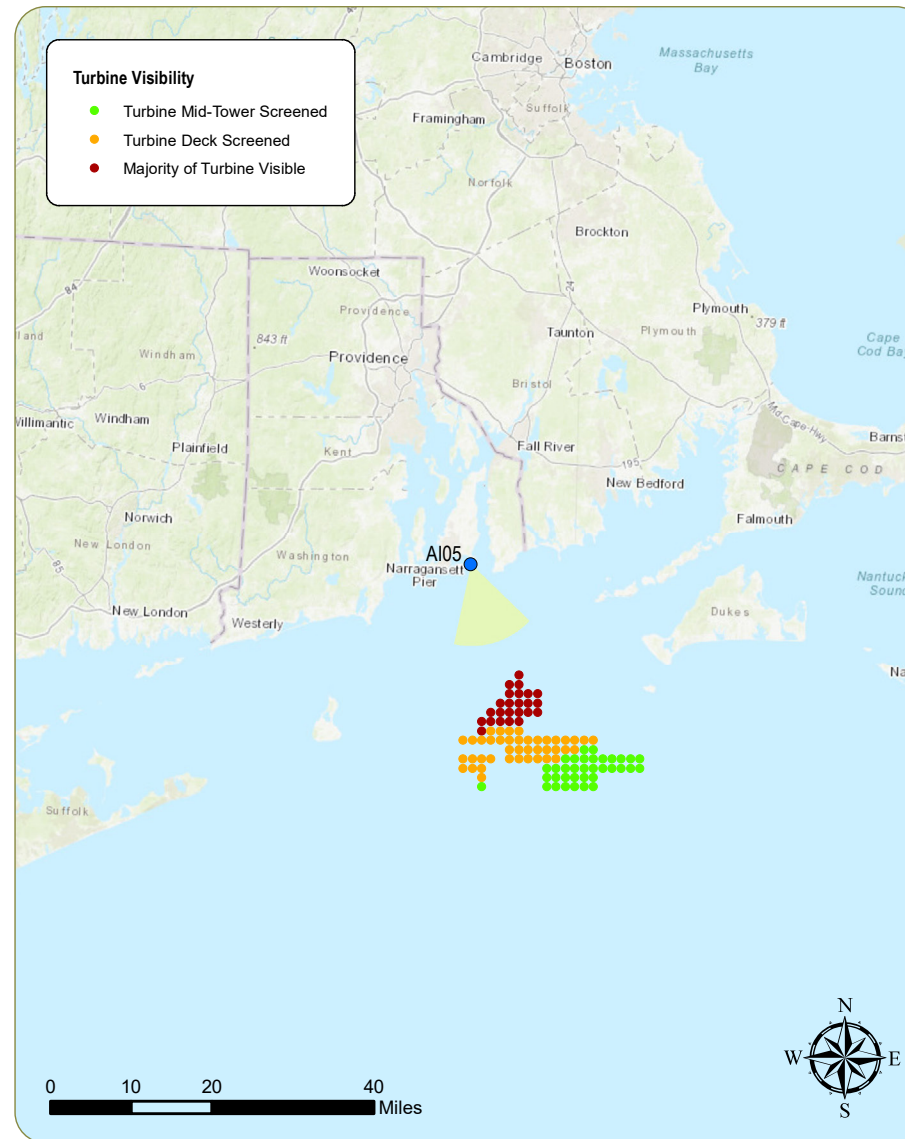
Date Taken: 11/24/2017
Time: 7:42 AM
Temperature: 39.0 °F
Humidity: 60%
Visibility: >10.0 miles
Wind Direction: West
Wind Speed: Calm
Conditions Observed: Clear

Camera Information

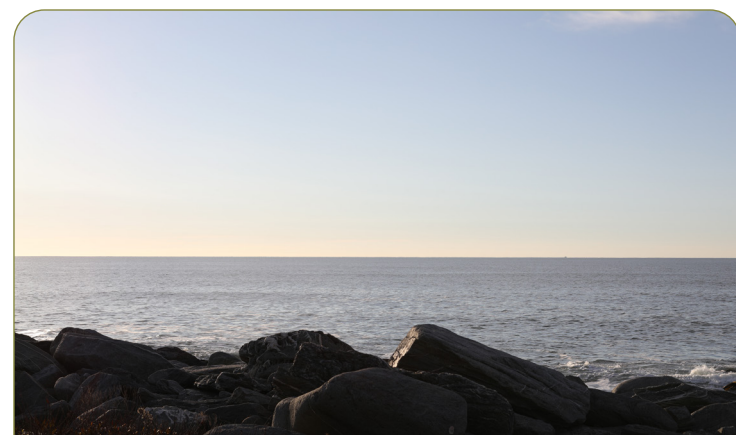
Camera: Canon EOS 5D Mark IV
Resolution: 30.4 Megapixels
Lens Focal Length: 50 mm
Camera Height: 21.7 feet AMSL

Viewing Instructions:

Printed at 100% the resulting simulation size is 15 inches wide by 10 inches high. At this size and focal length, the simulation should be viewed from a distance 21 inches.



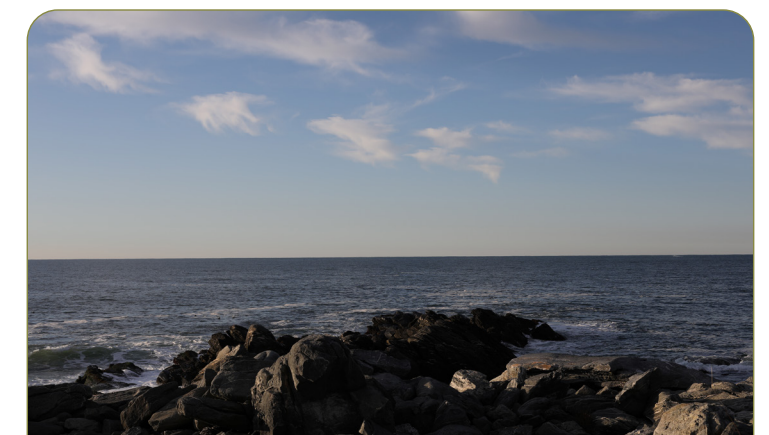
Context Photo: View to the Southeast



Simulation Photo: View to the South-Southeast



Simulation Photo: View to the South-Southeast



Context Photo: View to the South

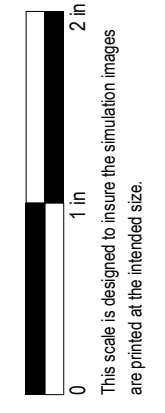
Revolution Wind Farm

Outer Continental Shelf, OCS-A 0486

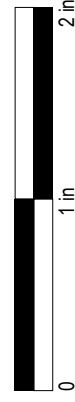
Viewpoint AI05: View from Sachuest Point National Wildlife Refuge, Middletown

Appendix C: Sheet 14 of 153

Existing Conditions

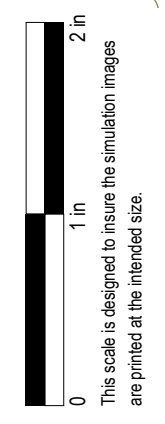


Simulation

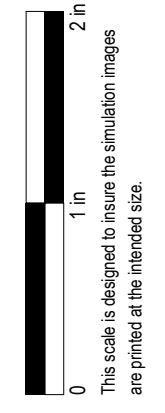


This scale is designed to insure the simulation images are printed at the intended size.

Existing Conditions



Simulation



Sachuest Beach (Second Beach)

Viewpoint Information

County: Newport

Town: Middletown

State: Rhode Island

Location: Aquidneck Island

Coordinates: 41.48802° N, 71.25796° W

Direction of View: South-Southeast to South (164.7°)

Distance to Nearest Visible Turbine: 16.1 miles

Environmental Data

Date Taken: 7/26/2017

Time: 6:09 PM

Temperature: 71.1 °F

Humidity: 66%

Visibility: >10 miles

Wind Direction: South

Wind Speed: 8.1 mph

Conditions Observed: Clear

Visual Resources

Landscape Similarity Zone: Shoreline Beach

User Group: Local Residents, Tourists/Vacationers

Aesthetic Resource: Sachuest Beach (Second Beach), Narragansett Bay

Camera Information

Camera: Canon EOS 5D Mark IV

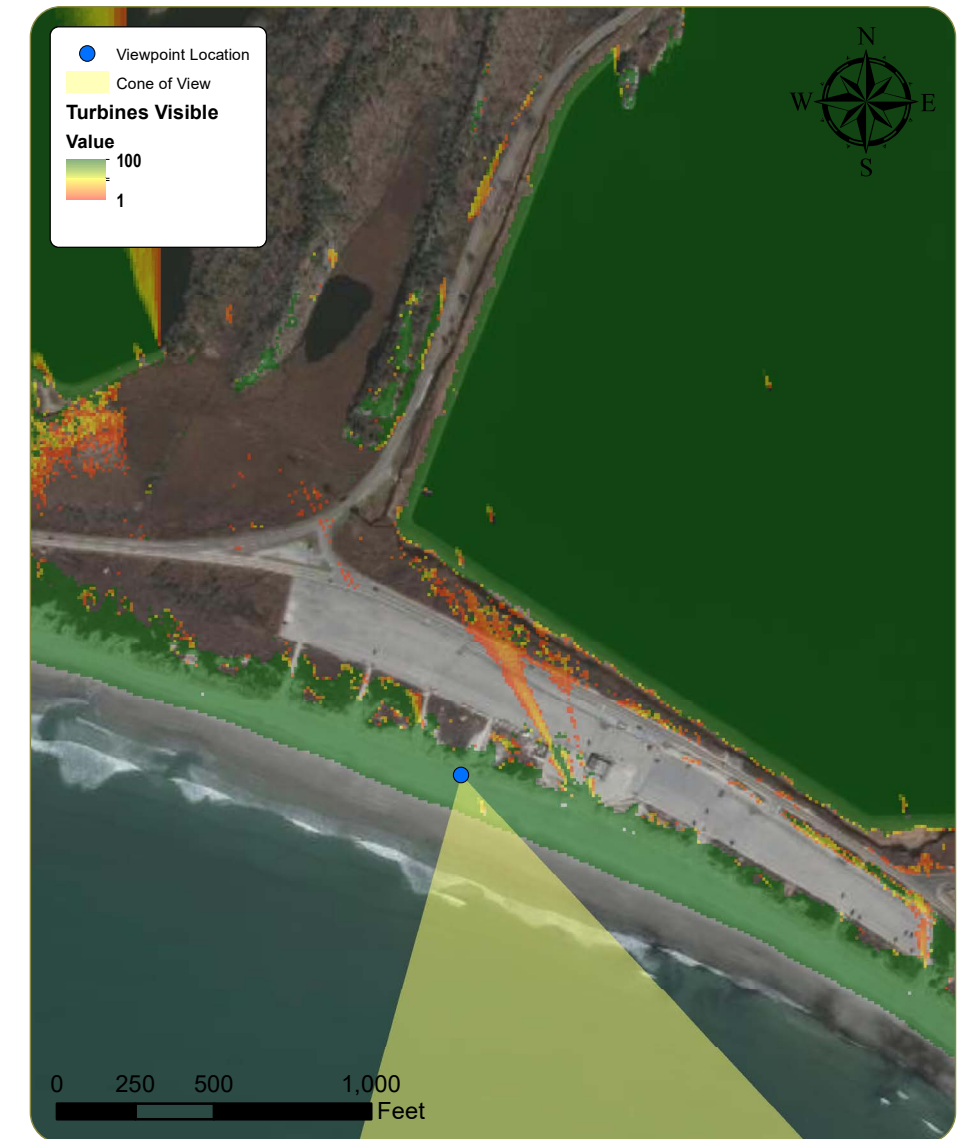
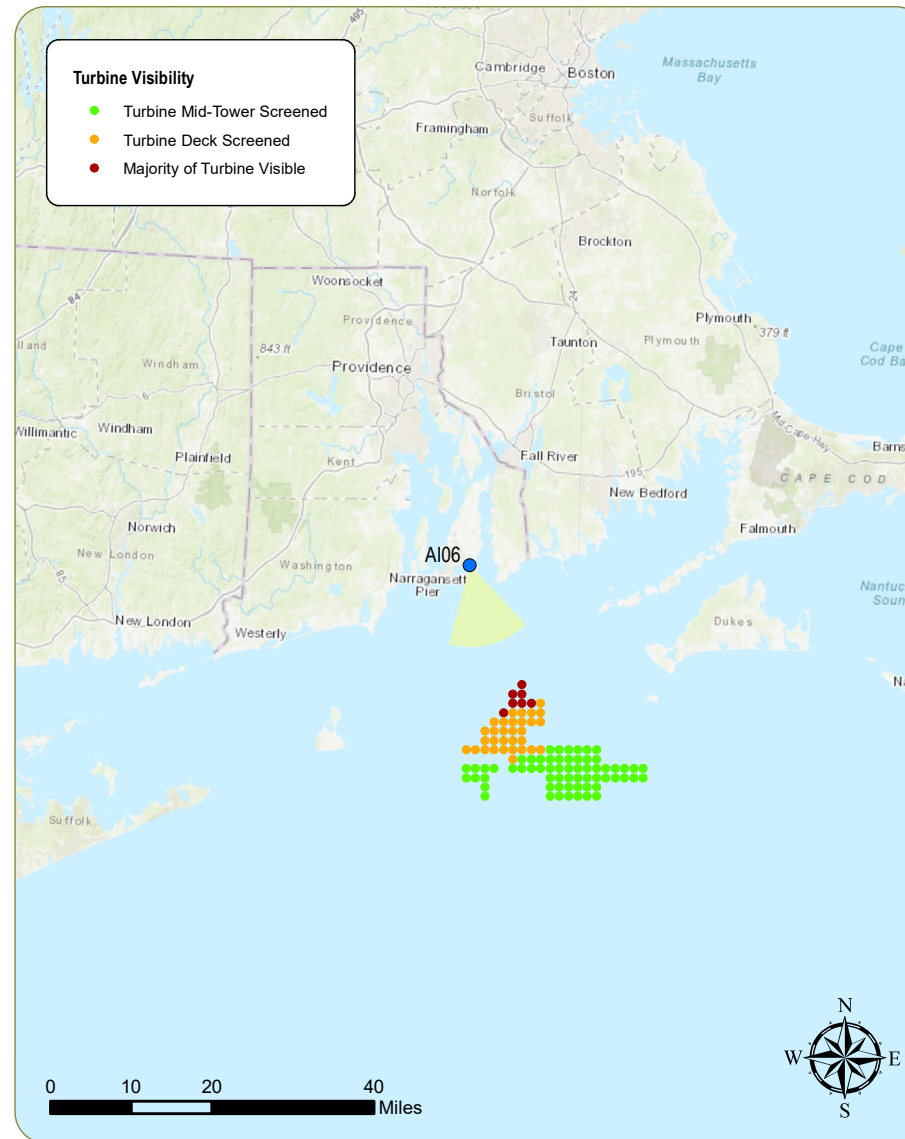
Resolution: 30.4 Megapixels

Lens Focal Length: 50 mm

Camera Height: 10.2 feet AMSL

Viewing Instructions:

Printed at 100% the resulting simulation size is 15 inches wide by 10 inches high. At this size and focal length, the simulation should be viewed from a distance 21 inches.



Context Photo: View to the Southeast



Simulation Photo: View to the South-Southeast



Simulation Photo: View to the South



Context Photo: View to the South

Revolution Wind Farm

Outer Continental Shelf, OCS-A 0486

Viewpoint AI06: View from Sachuest Beach (Second Beach), Middletown

Appendix C: Sheet 19 of 153

Existing Conditions



This scale is designed to insure the simulation images are printed at the intended size.

Simulation



This scale is designed to insure the simulation images are printed at the intended size.

Existing Conditions



This scale is designed to insure the simulation images are printed at the intended size.

Simulation



This scale is designed to insure the simulation images are printed at the intended size.

Hanging Rock (Norman Bird Sanctuary)

Viewpoint Information

County: Newport

Town: Middletown

State: Rhode Island

Location: Aquidneck Island

Coordinates: 41.49130° N, 71.25896° W

Direction of View: Southeast to South-Southeast
(160.5°)

Distance to Nearest Visible Turbine: 16.3 Miles

Environmental Data

Date Taken: 11/24/2017

Time: 9:38 AM

Temperature: 43.0 °F

Humidity: 47%

Visibility: >10 miles

Wind Direction: Variable

Wind Speed: 4.6 mph

Conditions Observed: Clear

Visual Resources

Landscape Similarity Zone: Coastal Scrub/Scrub Forest

User Group: Local Residents, Tourists/Vacationers

Aesthetic Resource: Norman Bird Sanctuary, Paradise Avenue and Associated Roads State Scenic Byway, Second Beach, Paradise Rocks Rhode Island Historic District

Camera Information

Camera: Canon EOS 5D Mark IV

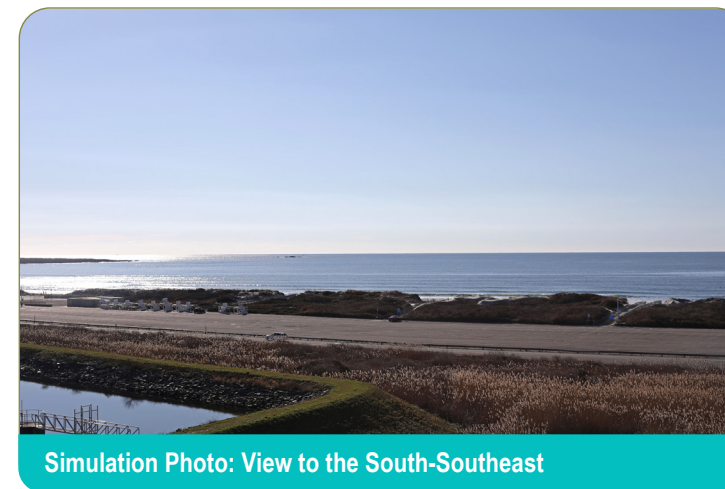
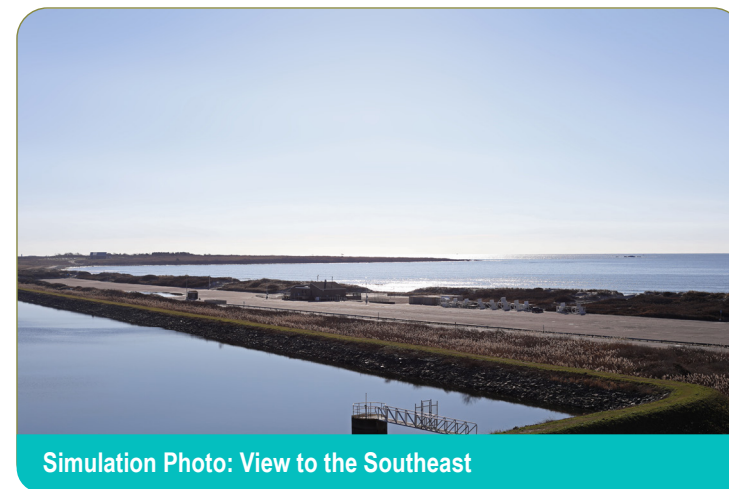
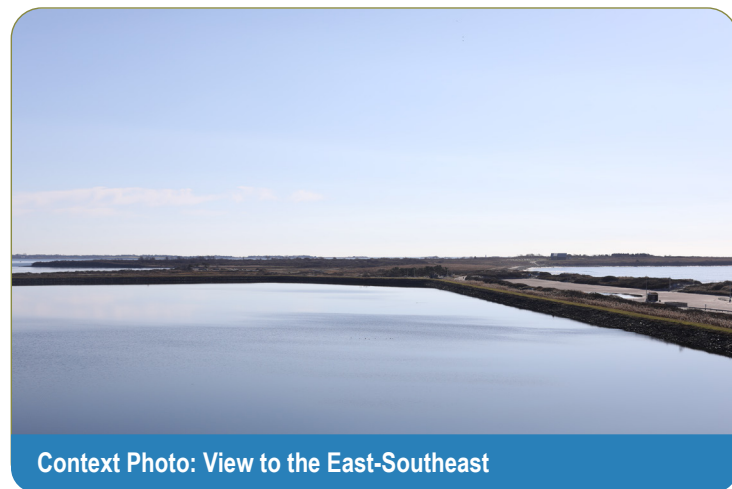
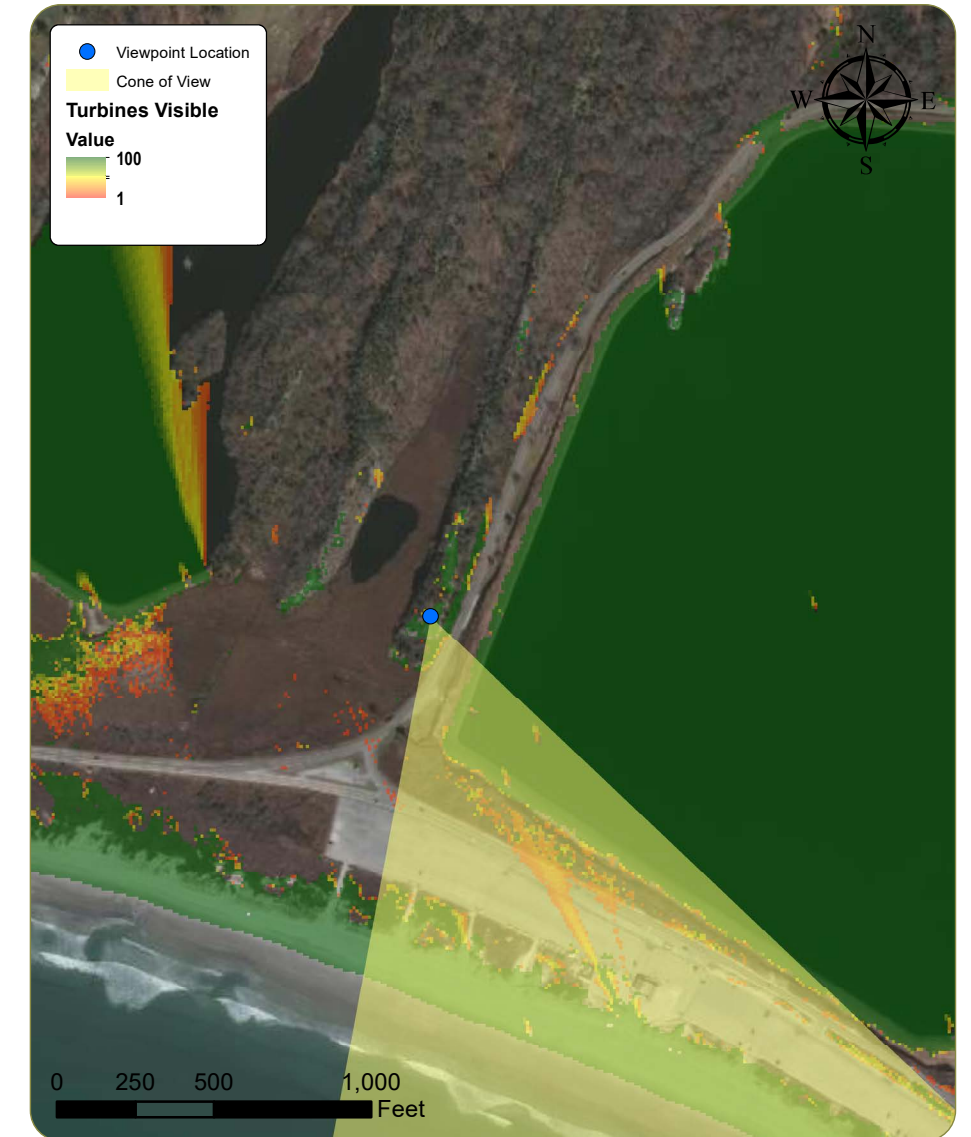
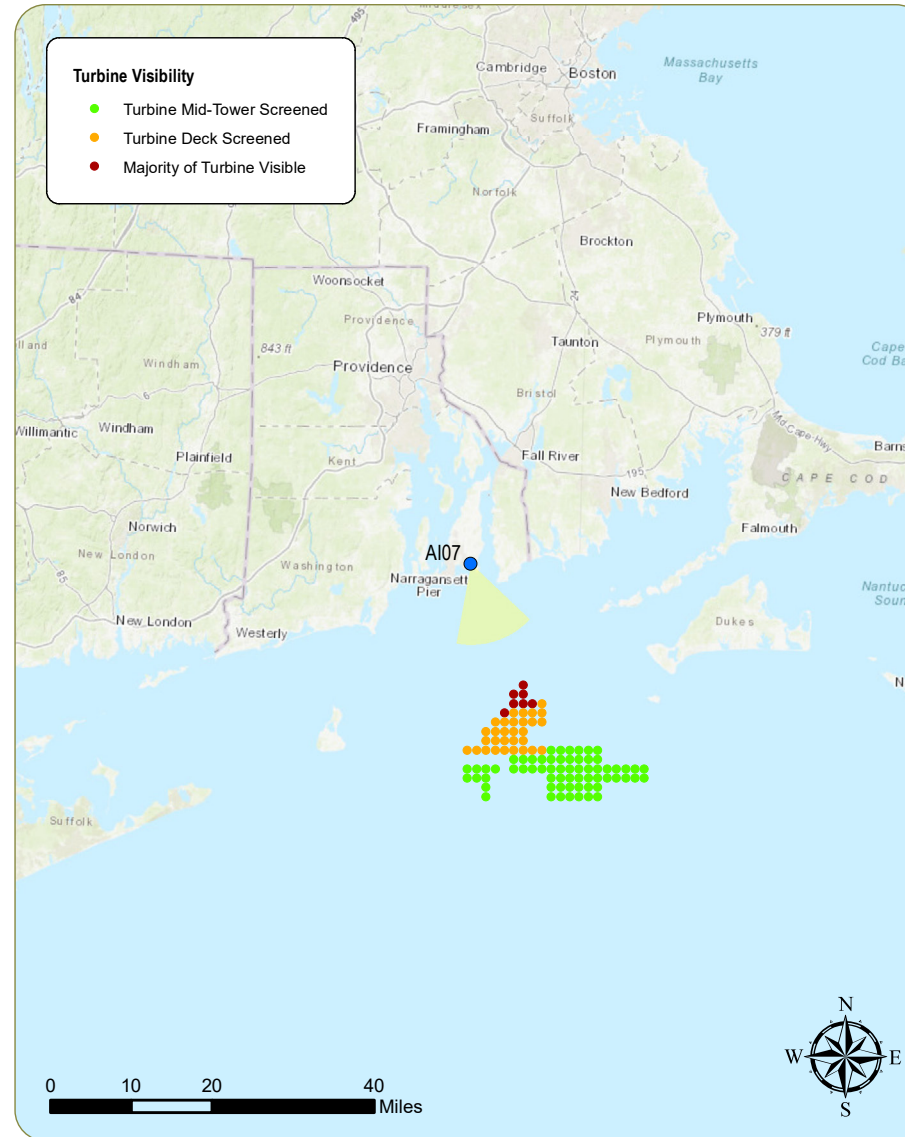
Resolution: 30.4 Megapixels

Lens Focal Length: 50 mm

Camera Height: 67.3 feet AMSL

Viewing Instructions:

Printed at 100% the resulting simulation size is 15 inches wide by 10 inches high. At this size and focal length, the simulation should be viewed from a distance 21 inches.



Revolution Wind Farm

Outer Continental Shelf, OCS-A 0486

Viewpoint AI07: View from Hanging Rock (Norman Bird Sanctuary), Middletown

Appendix C: Sheet 24 of 153

Existing Conditions



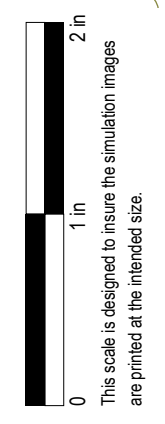
This scale is designed to insure the simulation images are printed at the intended size.

Simulation

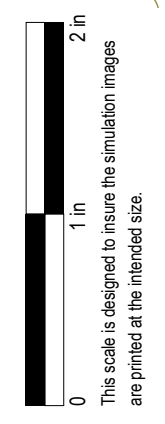


This scale is designed to insure the simulation images are printed at the intended size.

Existing Conditions



Simulation



Southeast Lighthouse

Viewpoint Information

County: Washington
 Town: New Shoreham
 State: Rhode Island
 Location: Block Island
 Coordinates: 41.15281° N, 71.55185° W
 Direction of View: East (86.4°)
 Distance to Nearest Visible Turbine: 15.5 miles

Environmental Data

Date Taken: 9/10/2017
 Time: 1:20 PM
 Temperature: 68.0 °F
 Humidity: 63%
 Visibility: >10 miles
 Wind Direction: Northeast
 Wind Speed: 8.1 mph
 Conditions Observed: Clear

Visual Resources

Landscape Similarity Zone: Maintained Recreation Area, Coastal Bluff
 User Group: Local Residents, Tourists/Vacationers
 Aesthetic Resource: Southeast Light National Historic Landmark, Mohegan Bluffs Scenic Area

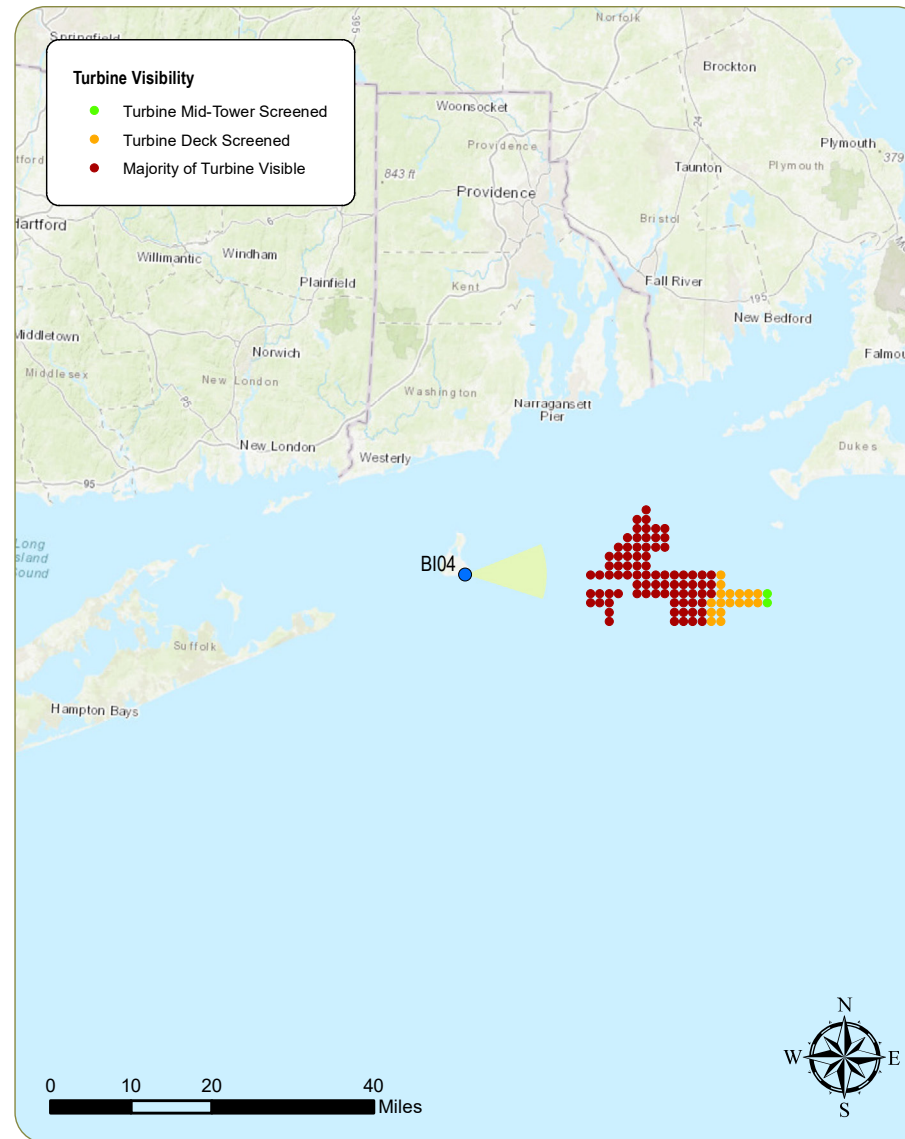
Notes: Block Island Wind Farm visible from this location at a distance of 3.0 miles.

Camera Information

Camera: Canon EOS 5D Mark IV
 Resolution: 30.4 Megapixels
 Lens Focal Length: 50 mm
 Camera Height: 161.1 feet AMSL

Viewing Instructions:

Printed at 100% the resulting simulation size is 15 inches wide by 10 inches high. At this size and focal length, the simulation should be viewed from a distance 21 inches.



Context Photo: View to the North



Simulation Photo: View to the East



Simulation Photo: View to the East



Context Photo: View to the Southeast

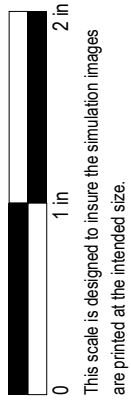
Revolution Wind Farm

Outer Continental Shelf, OCS-A 0486

Viewpoint BI04: View from Southeast Lighthouse, New Shoreham

Appendix C: Sheet 29 of 153

Existing Conditions



Simulation



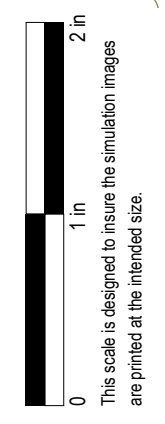
This scale is designed to insure the simulation images are printed at the intended size.

Existing Conditions



This scale is designed to insure the simulation images are printed at the intended size.

Simulation



Southeast Lighthouse

Viewpoint Information

County: Washington
 Town: New Shoreham
 State: Rhode Island
 Location: Block Island
 Coordinates: 41.15281° N, 71.55185° W
 Direction of View: East-Northeast (86.4°)
 Distance to Nearest Visible Turbine: 15.5 miles

Visual Resources

Landscape Similarity Zone: Maintained Recreation Area, Coastal Bluff
 User Group: Local Residents, Tourists/Vacationers
 Aesthetic Resource: Southeast Light National Historic Landmark, Mohegan Bluffs Scenic Area

Notes: Block Island Wind Farm visible from this location at a distance of 3.0 miles.

Environmental Data

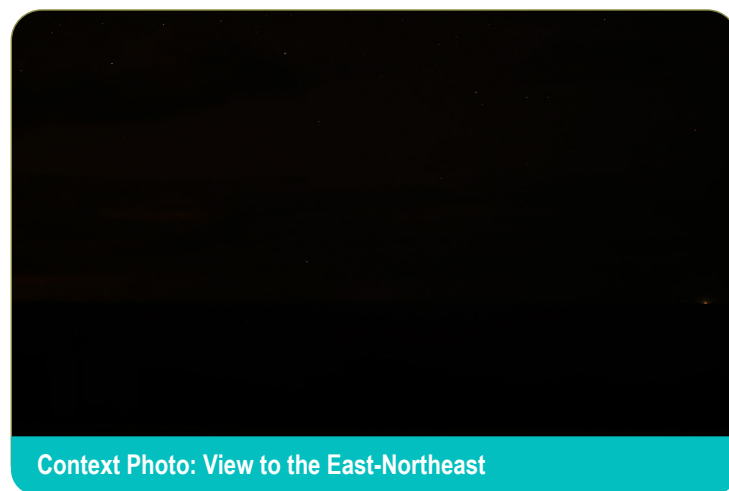
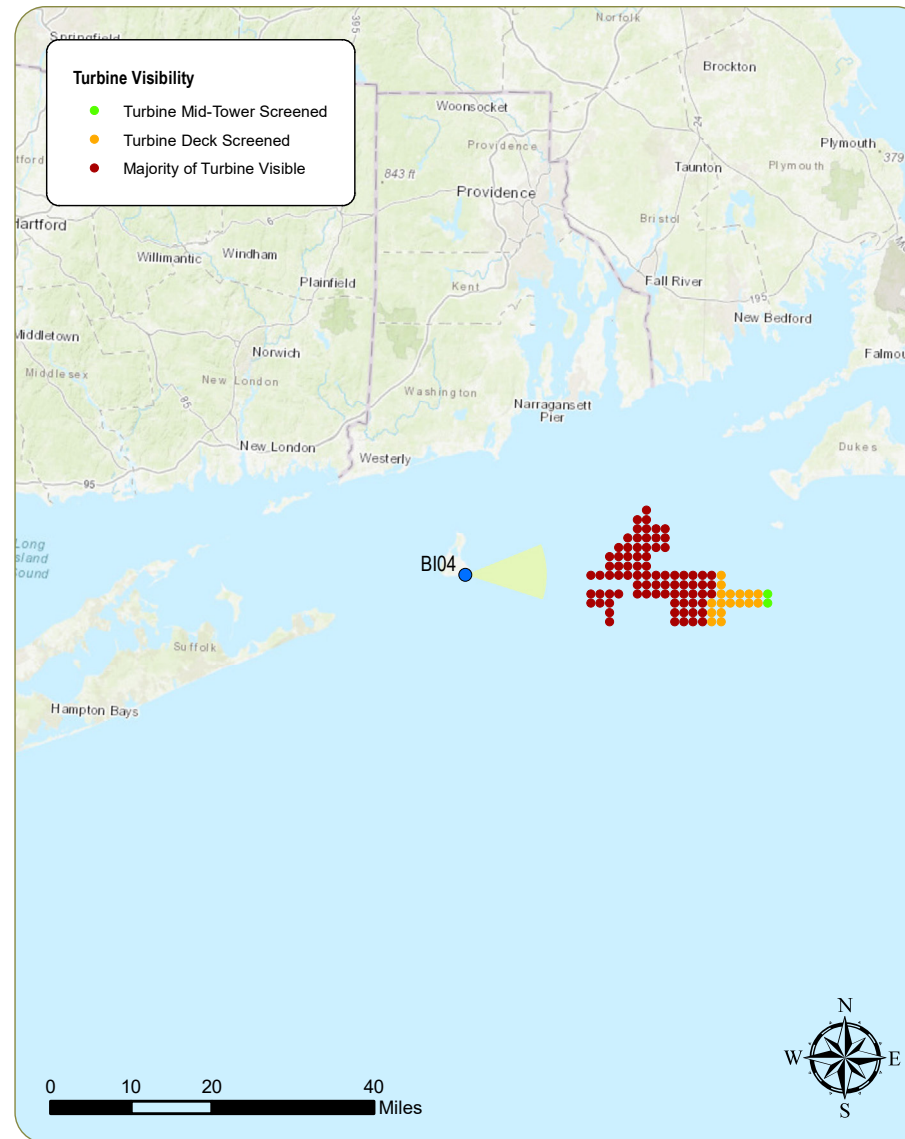
Date Taken: 9/10/2017
 Time: 9:06 PM
 Temperature: 63.0 °F
 Humidity: 81%
 Visibility: >10 miles
 Wind Direction: South-Southwest
 Wind Speed: 3.5 mph
 Conditions Observed: Clear

Camera Information

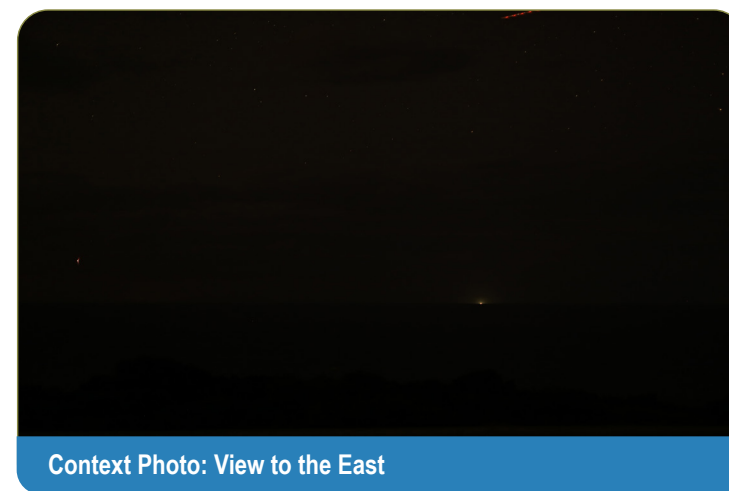
Camera: Canon EOS 5D Mark IV
 Resolution: 30.4 Megapixels
 Lens Focal Length: 50 mm
 Camera Height: 161.1 feet AMSL

Viewing Instructions:

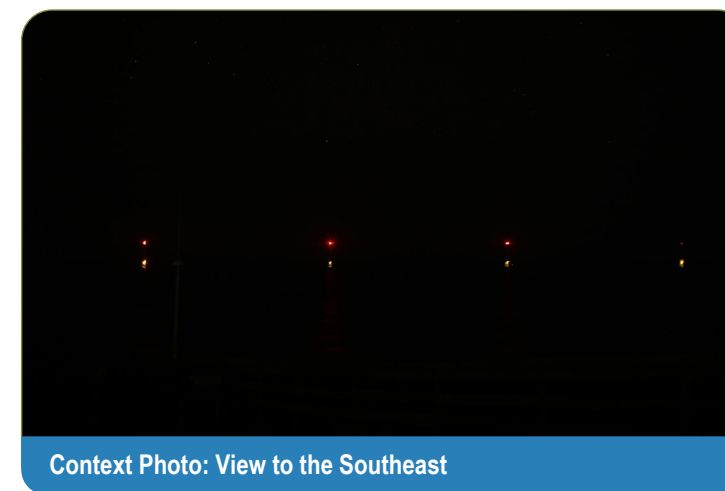
Printed at 100% the resulting simulation size is 15 inches wide by 10 inches high. At this size and focal length, the simulation should be viewed from a distance 21 inches.



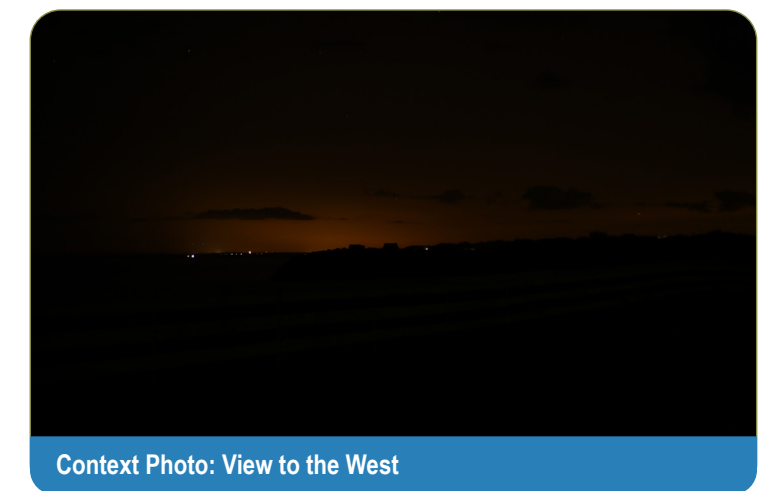
Context Photo: View to the East-Northeast



Context Photo: View to the East



Context Photo: View to the Southeast



Context Photo: View to the West

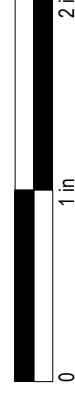
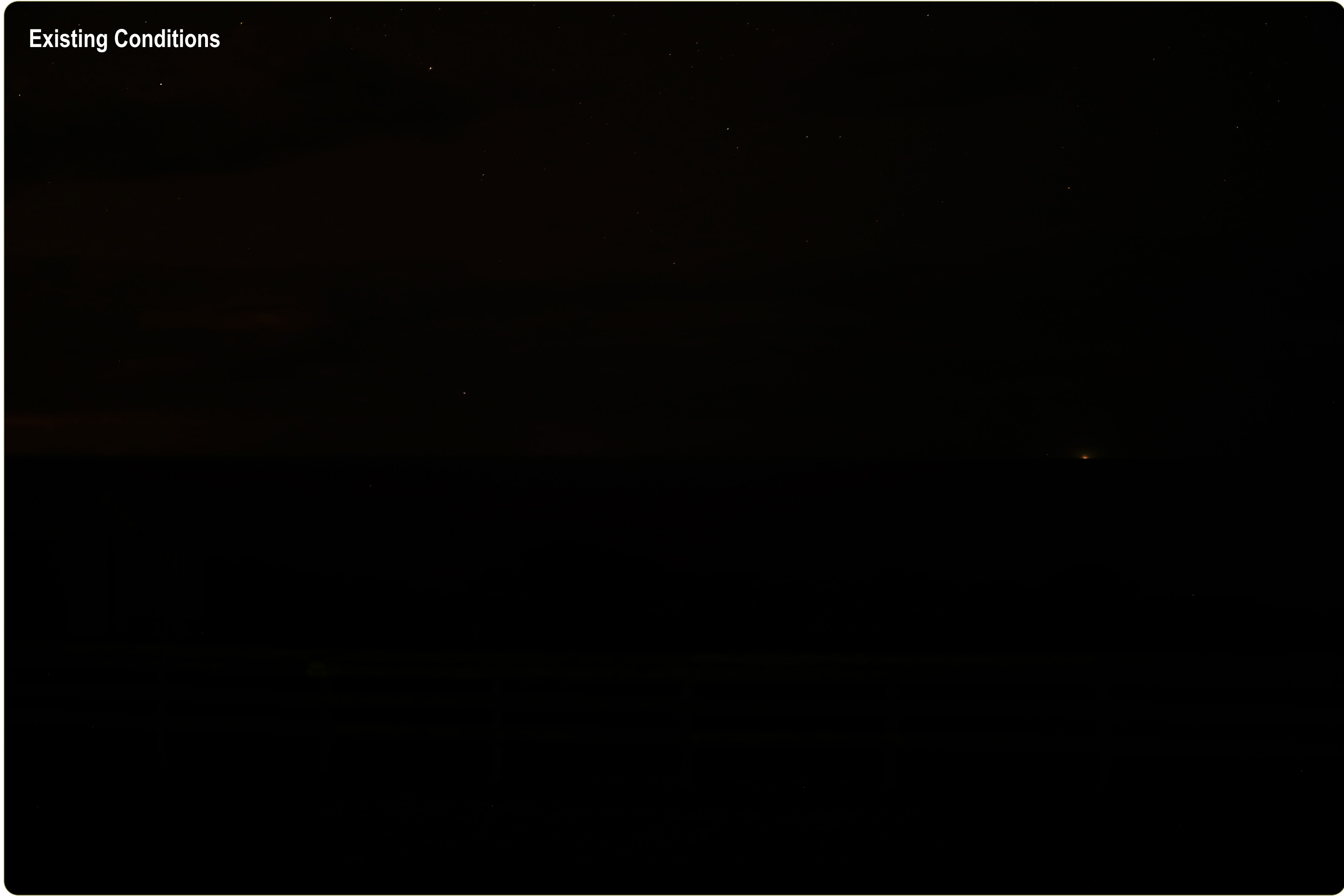
Revolution Wind Farm

Outer Continental Shelf, OCS-A 0486

Viewpoint BI04: Nighttime view from Southeast Lighthouse, New Shoreham

Appendix C: Sheet 34 of 153

Existing Conditions



This scale is designed to insure the simulation images are printed at the intended size.

Simulation



This scale is designed to insure the simulation images are printed at the intended size.

Clayhead Trail

Viewpoint Information

County: Washington
 Town: New Shoreham
 State: Rhode Island
 Location: Block Island
 Coordinates: 41.21274° N, 71.55510° W
 Direction of View: East (96.6°)
 Distance to Nearest Visible Turbine: 16.1 miles

Environmental Data

Date Taken: 9/11/2019
 Time: 11:31 AM
 Temperature: 60.0 °F
 Humidity: 69%
 Visibility: >10 miles
 Wind Direction: South
 Wind Speed: 15 mph
 Conditions Observed: Clear

Visual Resources

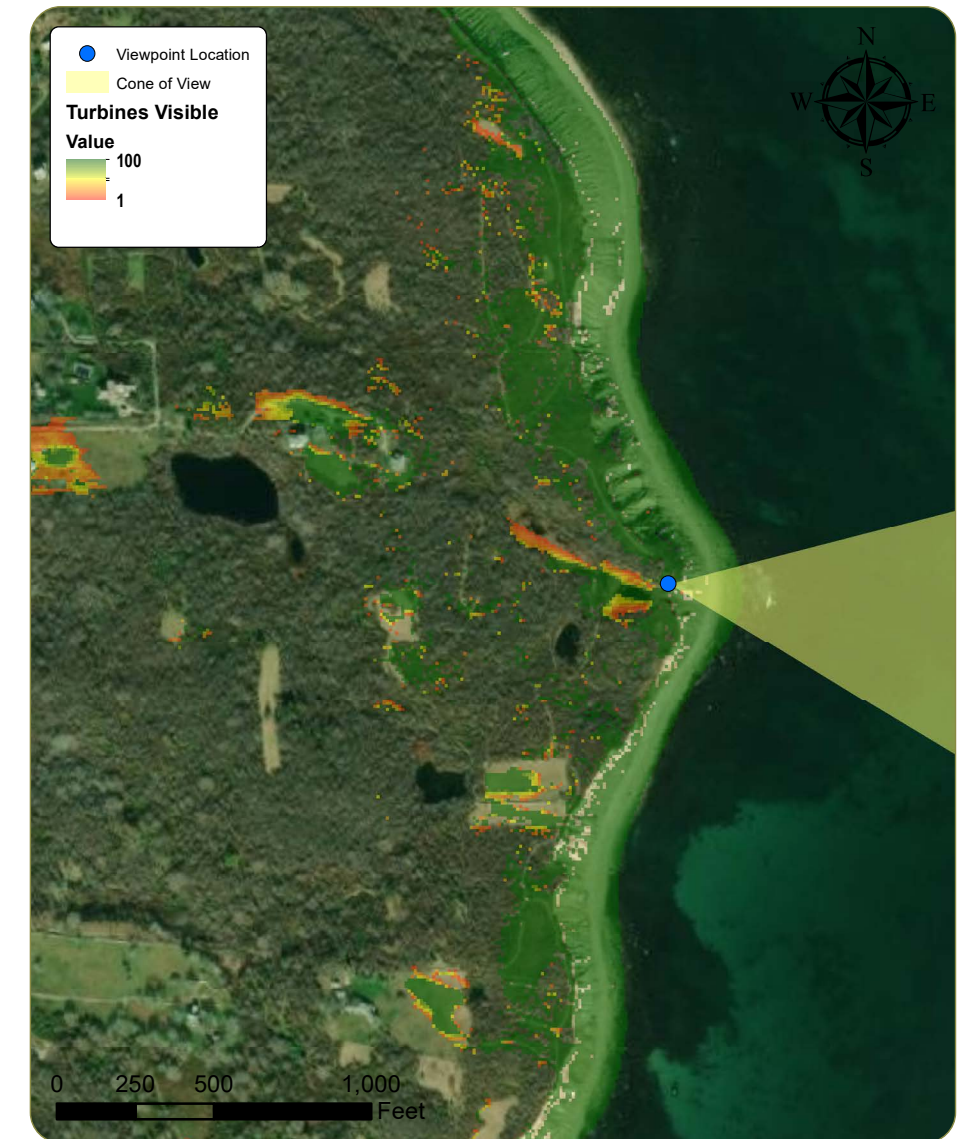
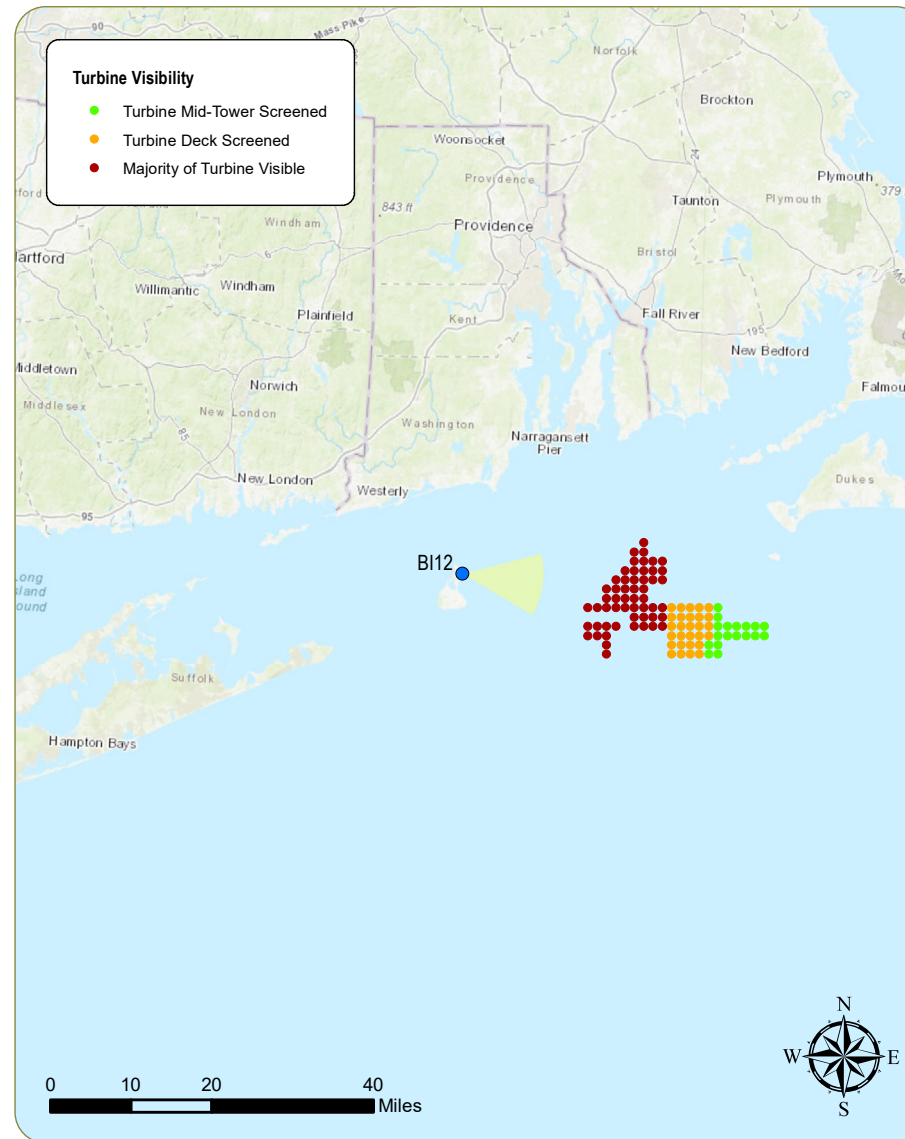
Landscape Similarity Zone: Coastal Bluff
 Viewer Type: Tourists/Vacationers, Local Residents
 Aesthetic Resource: Clayhead Trail State Scenic District

Camera Information

Camera: Canon EOS 5D Mark IV
 Resolution: 24 Megapixels
 Lens Focal Length: 50 mm
 Camera Height: 78.8 feet AMSL

Viewing Instructions:

Printed at 100% the resulting simulation size is 15 inches wide by 10 inches high. At this size and focal length, the simulation should be viewed from a distance 21 inches.



Context Photo: View to the Northeast



Simulation Photo: View to the East



Context Photo: View to the Southeast



Context Photo: View to the South-Southwest

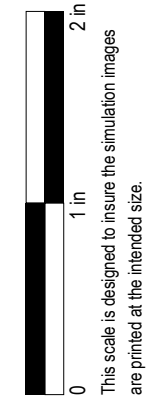
Revolution Wind Farm

Outer Continental Shelf, OCS-A 0486

Viewpoint BI12: View From Clayhead Trail, New Shoreham

Appendix C: Sheet 37 of 153

Existing Conditions



Simulation



This scale is designed to insure the simulation images are printed at the intended size.

Simulation: Clear Conditions



This scale is designed to insure the simulation images are printed at the intended size.

North Light

Viewpoint Information

County: Washington
Town: New Shoreham
State: Rhode Island
Location: Block Island
Coordinates: 41.22751° N, 71.57576° W
Direction of View: East (97.9°)
Distance to Nearest Visible Turbine: 17.4 miles

Visual Resources

Landscape Similarity Zone: Coastal Dunes
Viewer Type: Tourists/Vacationers, Local Residents
Aesthetic Resource: North Light National Register Historic Property, Beach Plum Neck/North Light State Scenic Area, Corn Neck Road Historic District (NRE)

Environmental Data

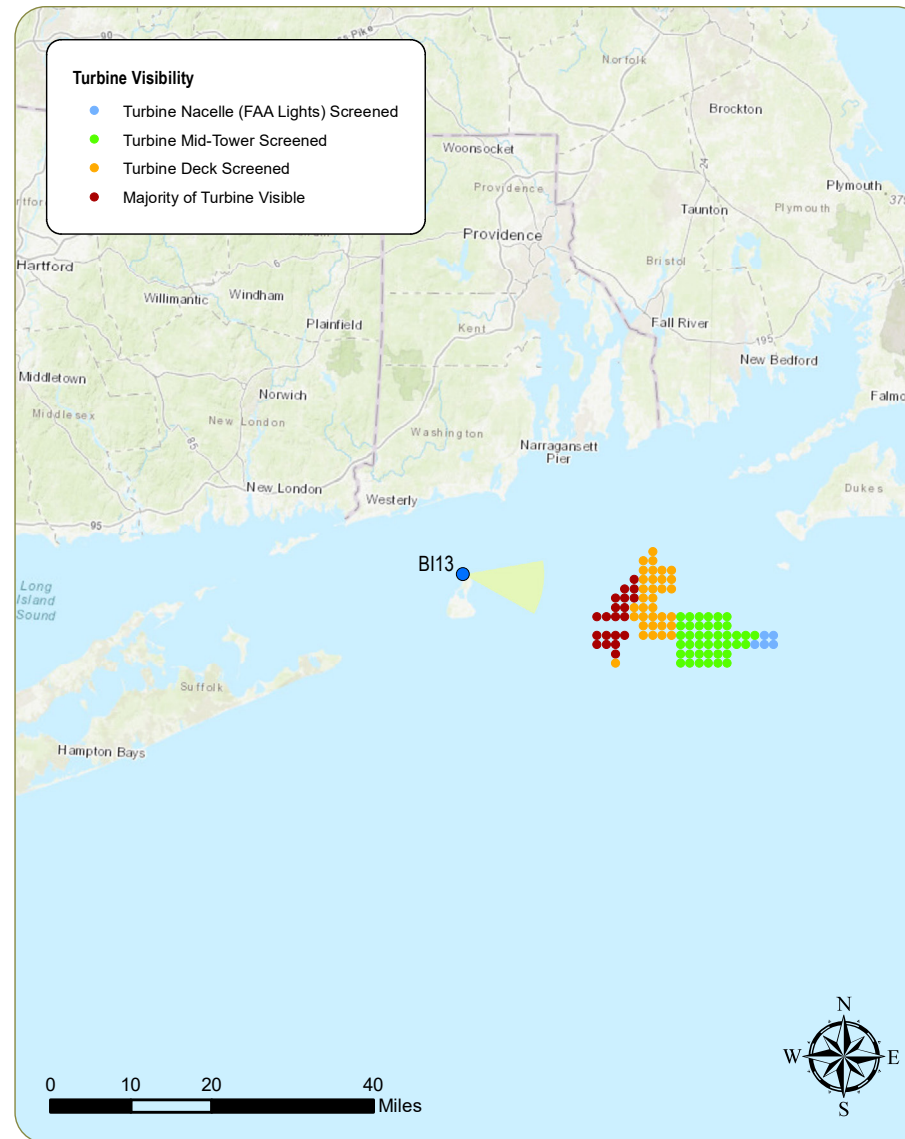
Date Represented: 9/11/2019
Time Represented: 8:47 AM
Temperature: 58.0 °F
Humidity: 67%
Visibility: >10.0 miles
Wind Direction: SSW
Wind Speed: 15 MPH
Conditions Represented: Partly Cloudy

Camera Information

Camera: Canon EOS 5D Mark IV
Resolution: 24 Megapixels
Lens Focal Length: 50 mm
Camera Height: 27.5 feet AMSL

Viewing Instructions:

Printed at 100% the resulting simulation size is 15 inches wide by 10 inches high. At this size and focal length, the simulation should be viewed from a distance 21 inches.



Context Photo: View to the East-Northeast



Simulation Photo: View to the East



Context Photo: View to the Southeast



Context Photo: View to the South

Revolution Wind Farm

Outer Continental Shelf, OCS-A 0486

Viewpoint BI13: View from North Light, New Shoreham

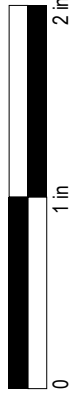
Appendix C: Sheet 41 of 153

Existing Conditions



This scale is designed to insure the simulation images are printed at the intended size.

Simulation



This scale is designed to insure the simulation images are printed at the intended size.

Beavertail Lighthouse

Viewpoint Information

County: Newport

Town: Jamestown

State: Rhode Island

Location: Conanicut Island

Coordinates: 41.44978° N, 71.39848° W

Direction of View: Southeast to South-Southeast
(147.7°)

Distance to Nearest Visible Turbine: 18.5 miles

Visual Resources

Landscape Similarity Zone: Maintained Recreation Area, Coastal Bluff

User Group: Local Residents, Tourists/Vacationers

Aesthetic Resource: National Register Historic Site, Beavertail Point Scenic Area, Rhode Island Historic District, Beavertail State Park

Notes: Block Island Wind Farm visible from this location at a distance of 23.1 miles.

Environmental Data

Date Taken: 7/26/2017

Time: 7:25 PM

Temperature: 66.0 °F

Humidity: 84%

Visibility: >10 miles

Wind Direction: South-Southwest

Wind Speed: 6.9 mph

Conditions Observed: Clear

Camera Information

Camera: Canon EOS 5D Mark IV

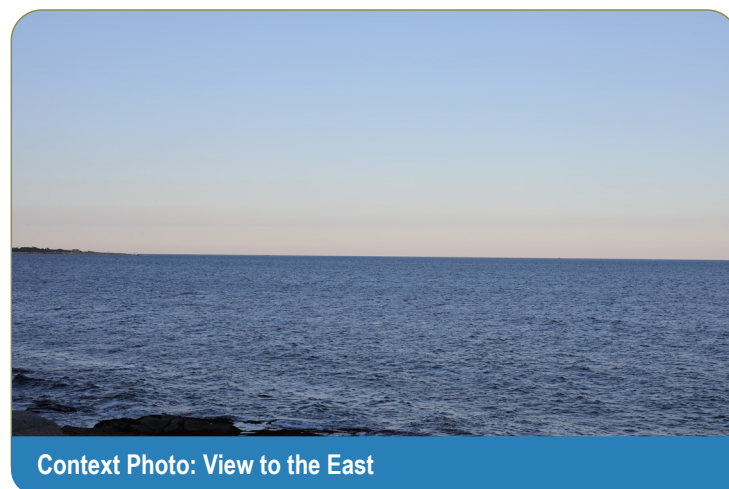
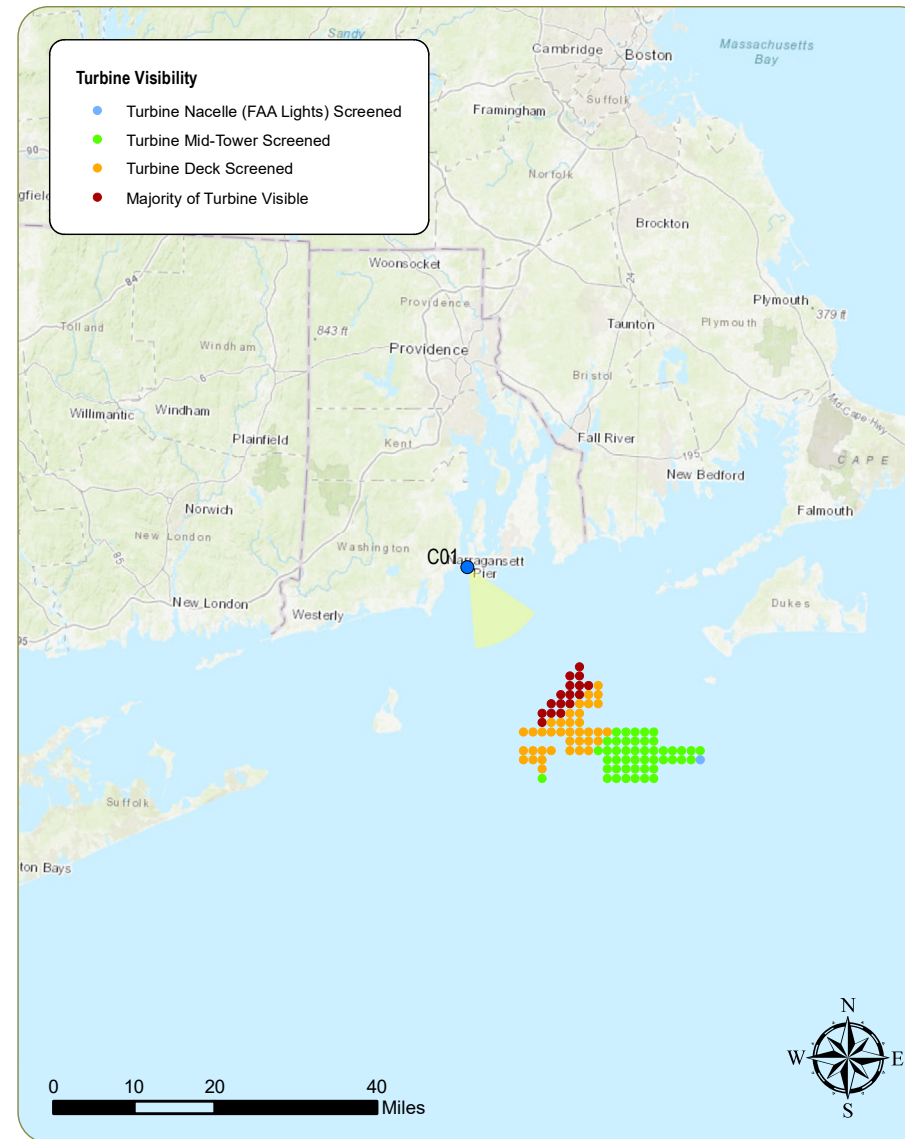
Resolution: 30.4 Megapixels

Lens Focal Length: 50 mm

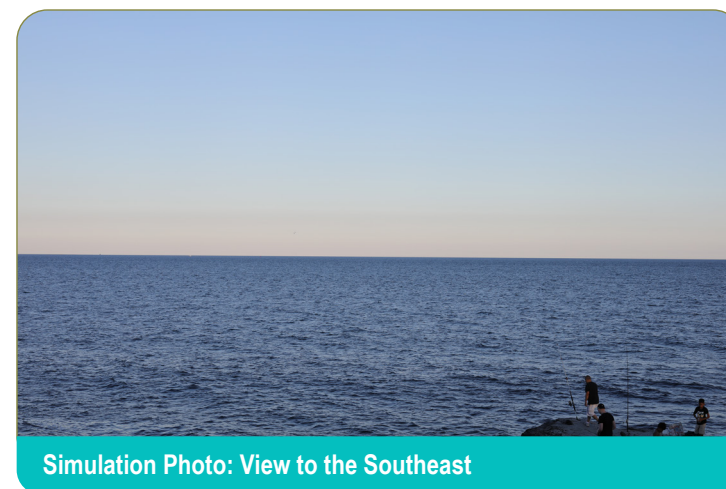
Camera Height: 27.5 feet AMSL

Viewing Instructions:

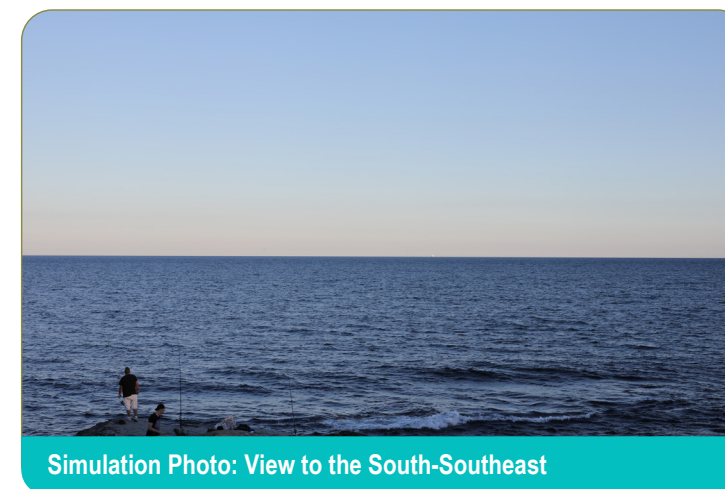
Printed at 100% the resulting simulation size is 15 inches wide by 10 inches high. At this size and focal length, the simulation should be viewed from a distance 21 inches.



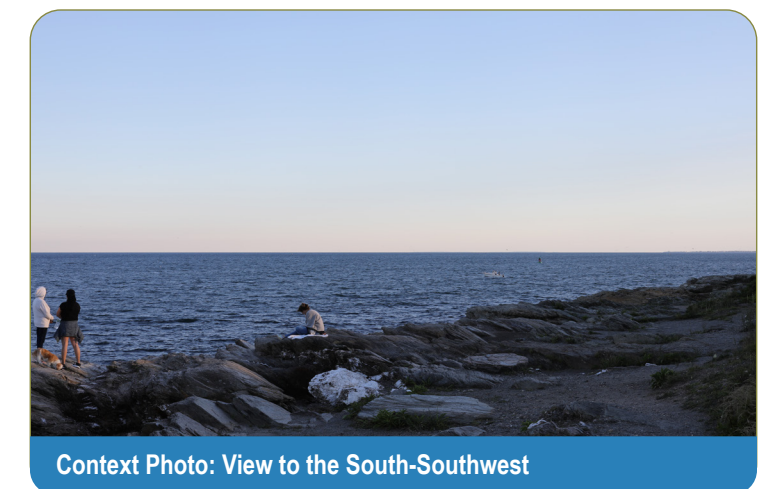
Context Photo: View to the East



Simulation Photo: View to the Southeast



Simulation Photo: View to the South-Southeast



Context Photo: View to the South-Southwest

Revolution Wind Farm

Outer Continental Shelf, OCS-A 0486

Viewpoint C01: View from Beavertail Lighthouse, Jamestown

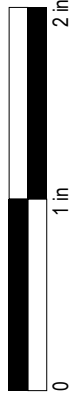
Appendix C: Sheet 44 of 153

Existing Conditions



This scale is designed to insure the simulation images are printed at the intended size.

Simulation



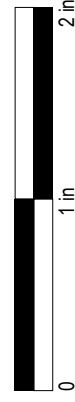
This scale is designed to insure the simulation images are printed at the intended size.

Existing Conditions



This scale is designed to insure the simulation images are printed at the intended size.

Simulation



This scale is designed to insure the simulation images are printed at the intended size.

Watch Hill Lighthouse

Viewpoint Information

County: Washington

Town: Westerly

State: Rhode Island

Location: Mainland, RI

Coordinates: 41.30518° N, 71.85784° W

Direction of View: East-Southeast (103.0°)

Distance to Nearest Visible Turbine: 33.0 Miles

Visual Resources

Landscape Similarity Zone: Maintained Recreation Area, Shoreline Residential

User Group: Local Residents, Tourists/Vacationers

Aesthetic Resource: Watch Hill National Register Historic District, Watch Hill State Scenic Area

Notes: Block Island Wind Farm visible from this location at a distance of 21.6 miles.

Environmental Data

Date Taken: 8/2/2017

Time: 6:23 PM

Temperature: 75.0 °F

Humidity: 79%

Visibility: >10 miles

Wind Direction: Southwest

Wind Speed: 6.9 mph

Conditions Observed: Mostly Cloudy

Camera Information

Camera: Canon EOS 5D Mark IV

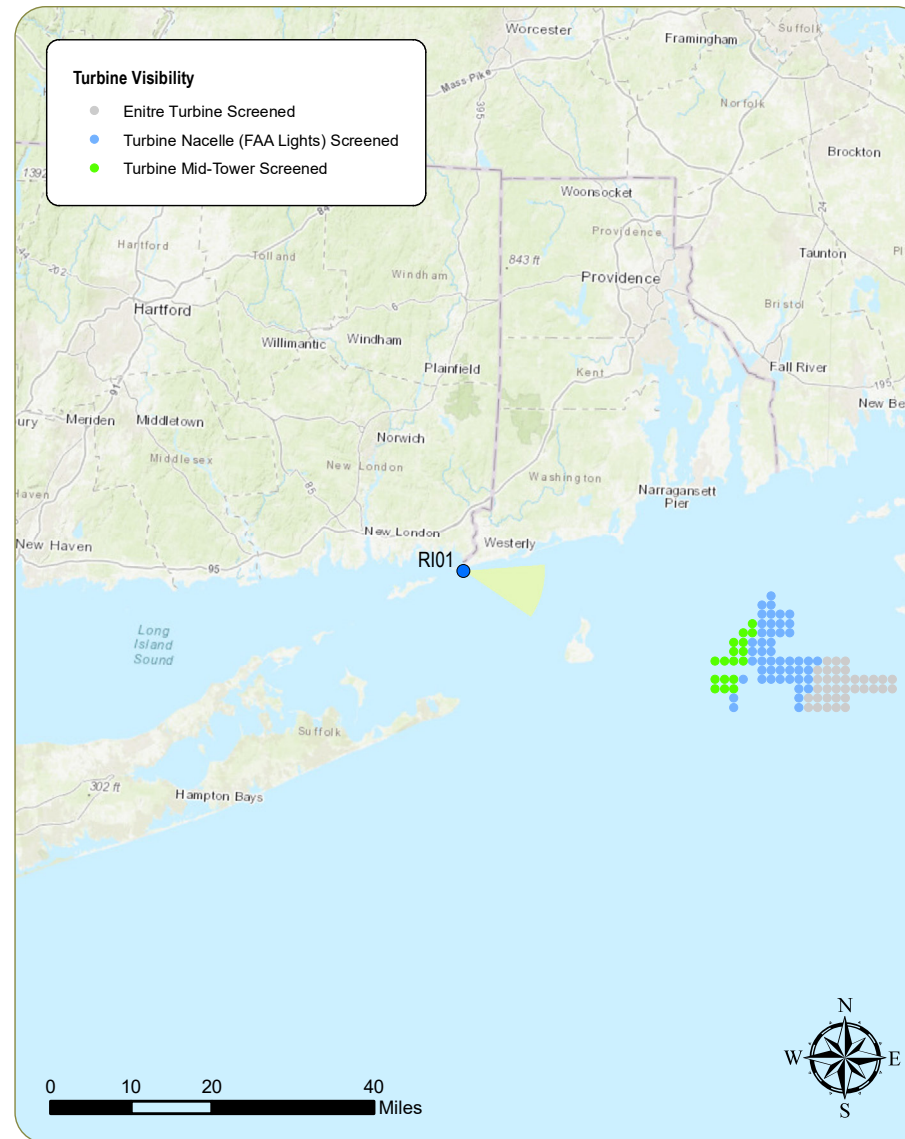
Resolution: 30.4 Megapixels

Lens Focal Length: 50 mm

Camera Height: 24.1 feet AMSL

Viewing Instructions:

Printed at 100% the resulting simulation size is 15 inches wide by 10 inches high. At this size and focal length, the simulation should be viewed from a distance 21 inches.



Context Photo: View to the Northeast



Context Photo: View to the East-Northeast



Simulation Photo: View to the East-Southeast



Context Photo: View to the Southeast

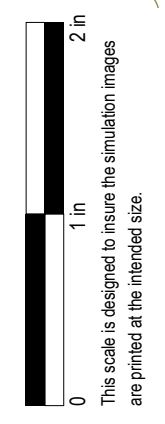
Revolution Wind Farm

Outer Continental Shelf, OCS-A 0486

Viewpoint RI01: View from Watch Hill Lighthouse, Westerly

Appendix C: Sheet 142 of 153

Existing Conditions



Simulation



This scale is designed to insure the simulation images are printed at the intended size.

Trustom Pond NWR

Viewpoint Information

County: Washington
Town: South Kingstown
State: Rhode Island
Location: Mainland, RI
Coordinates: 41.37216° N, 71.58689° W
Direction of View: Southeast (120.7°)
Distance to Nearest Visible Turbine: 22.8 Miles

Visual Resources

Landscape Similarity Zone: Salt Pond/Tidal Marsh
User Group: Local Residents, Tourists/Vacationers
Aesthetic Resource: Trustom Pond/Matunuck State Scenic Area, Trustom Pond National Wildlife Refuge

Environmental Data

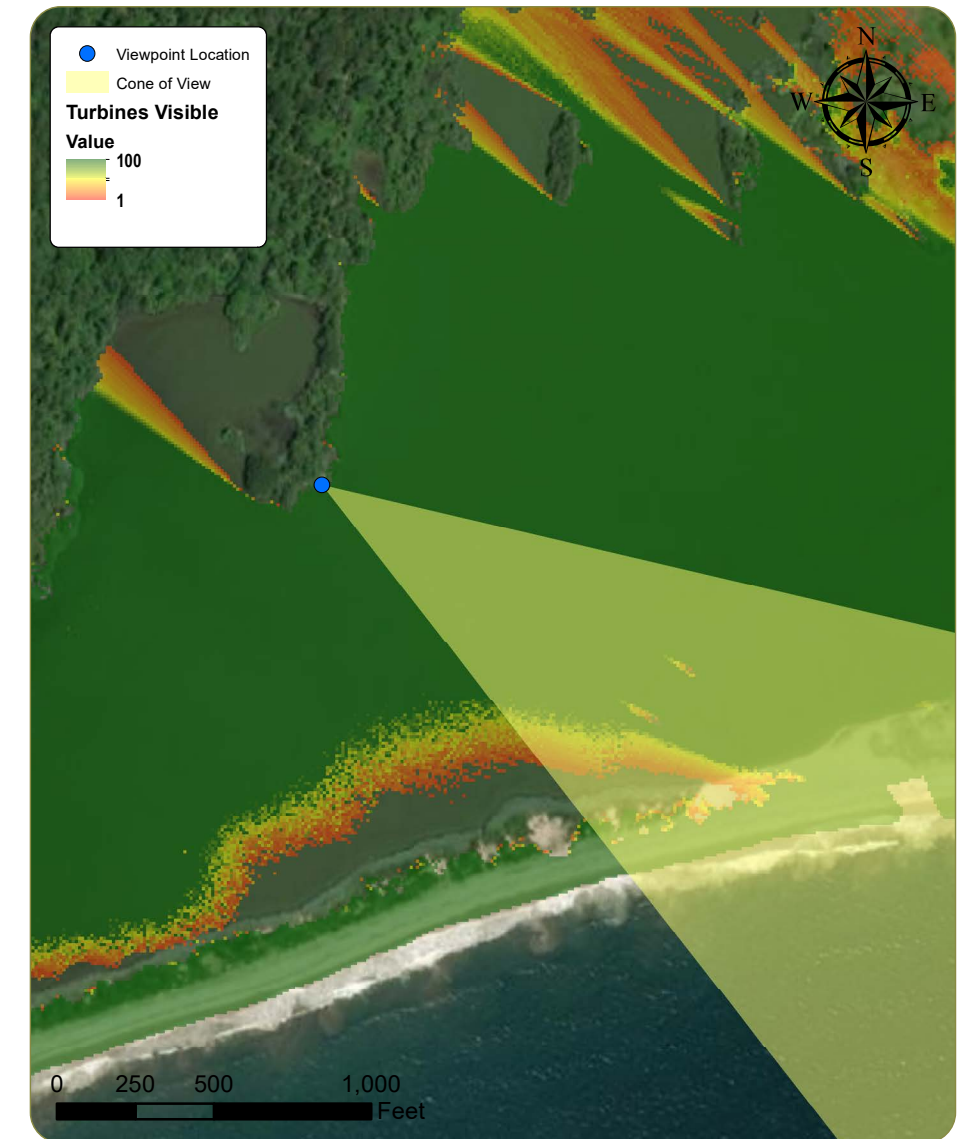
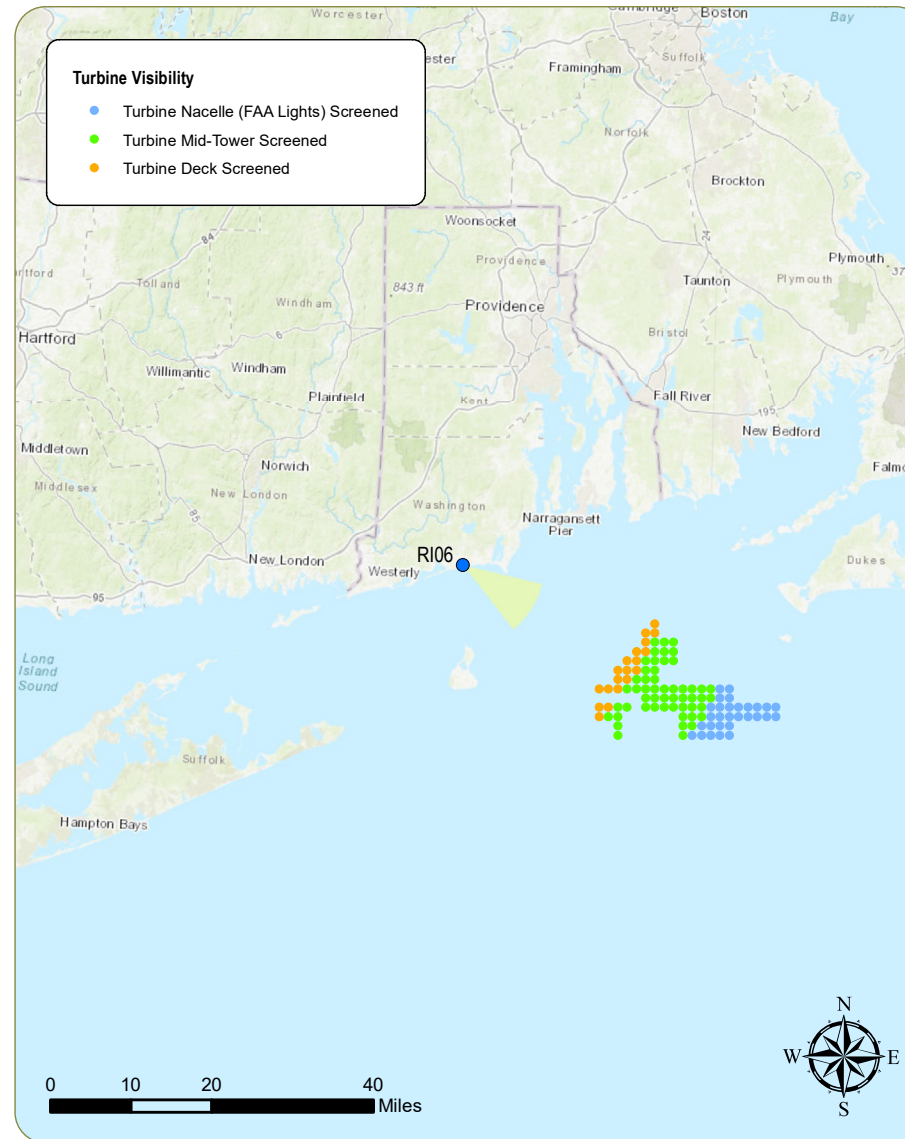
Date Taken: 1/18/2018
Time: 7:51 AM
Temperature: 21.9 °F
Humidity: 68%
Visibility: >10 miles
Wind Direction: NNW
Wind Speed: 9.2 mph
Conditions Observed: Partly Cloudy

Camera Information

Camera: Canon EOS 5D Mark IV
Resolution: 30.4 Megapixels
Lens Focal Length: 50 mm
Camera Height: 13.8 feet AMSL

Viewing Instructions:

Printed at 100% the resulting simulation size is 15 inches wide by 10 inches high. At this size and focal length, the simulation should be viewed from a distance 21 inches.



Context Photo: View to the East



Context Photo: View to the East-Southeast



Simulation Photo: View to the Southeast



Context Photo: View to the South-Southeast

Revolution Wind Farm

Outer Continental Shelf, OCS-A 0486

Viewpoint RI06: View from Trustom Pond NWR, South Kingstown

Appendix C: Sheet 145 of 153

Existing Conditions



This scale is designed to insure the simulation images are printed at the intended size.

Simulation



This scale is designed to insure the simulation images are printed at the intended size.

Scarborough Beach State Park

Viewpoint Information

County: Washington
 Town: Narragansett
 State: Rhode Island
 Location: Mainland, RI
 Coordinates: 41.39094° N, 71.47130° W
 Direction of View: Southeast (132.1°)
 Distance to Nearest Visible Turbine: 19.1 miles

Visual Resources

Landscape Similarity Zone: Shoreline Beach
 User Group: Local Residents, Tourists/Vacationers
 Aesthetic Resource: Scarborough State Beach
 Notes: Block Island Wind Farm visible from this location at a distance of 18.4 miles.

Environmental Data

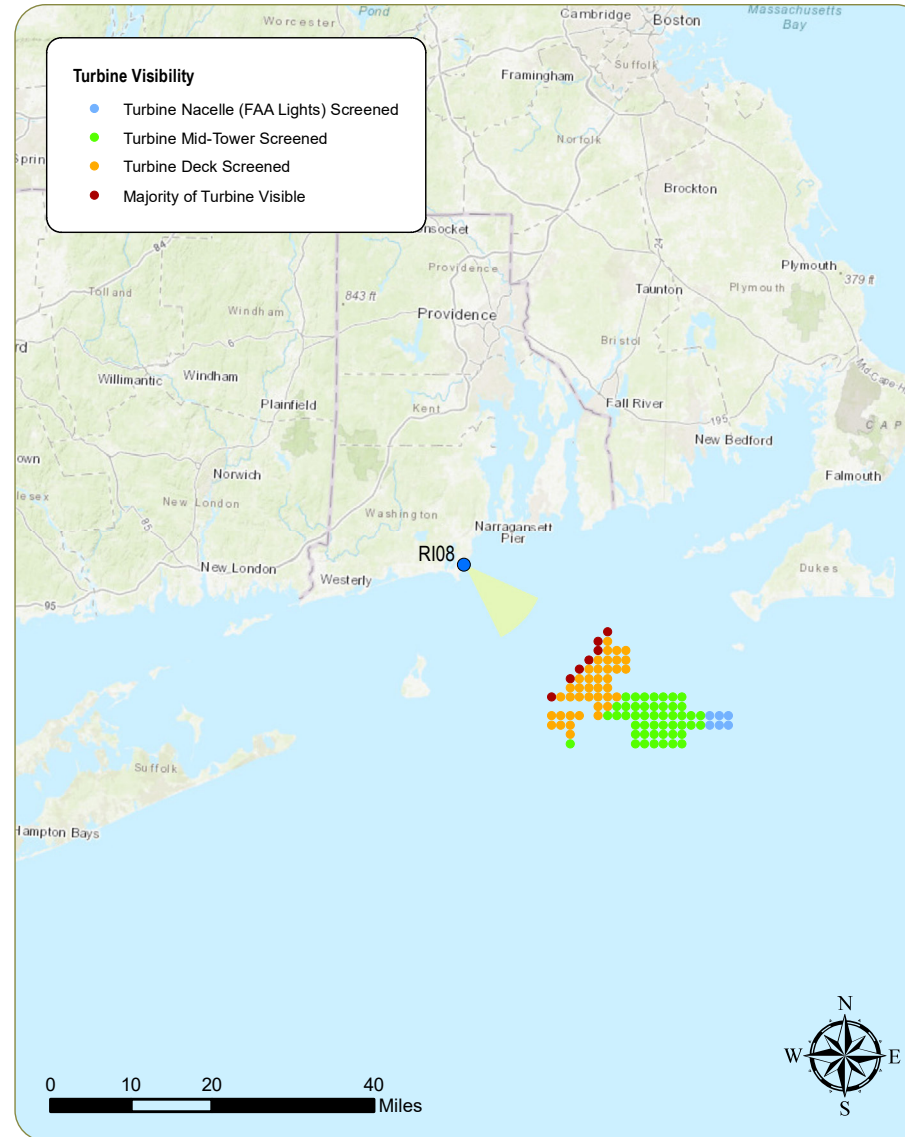
Date Taken: 8/3/2017
 Time: 11:07 AM
 Temperature: 73.9 °F
 Humidity: 87%
 Visibility: >10 miles
 Wind Direction: South-Southwest
 Wind Speed: 8.1 mph
 Conditions Observed: Scattered Clouds

Camera Information

Camera: Canon EOS 5D Mark IV
 Resolution: 30.4 Megapixels
 Lens Focal Length: 50 mm
 Camera Height: 14.8 feet AMSL

Viewing Instructions:

Printed at 100% the resulting simulation size is 15 inches wide by 10 inches high. At this size and focal length, the simulation should be viewed from a distance 21 inches.



Context Photo: View to the East



Simulation Photo: View to the South-Southeast



Context Photo: View to the South-Southeast



Context Photo: View to the Southwest

Revolution Wind Farm

Outer Continental Shelf, OCS-A 0486

Viewpoint RI08: View from Scarborough Beach State Park, Narragansett

Appendix C: Sheet 148 of 153

Existing Conditions



This scale is designed to insure the simulation images are printed at the intended size.

Simulation



This scale is designed to insure the simulation images are printed at the intended size.

Narragansett Beach

Viewpoint Information

County: Washington
 Town: Narragansett
 State: Rhode Island
 Location: Mainland, RI
 Coordinates: 41.43861° N, 71.44980° W
 Direction of View: Southeast (141.3°)
 Distance to Nearest Visible Turbine: 20.0 miles

Environmental Data

Date Taken: 8/3/2017
 Time: 9:16 AM
 Temperature: 71.1 °F
 Humidity: 96%
 Visibility: >10 miles
 Wind Direction: Calm
 Wind Speed: Calm
 Conditions Observed: Overcast

Visual Resources

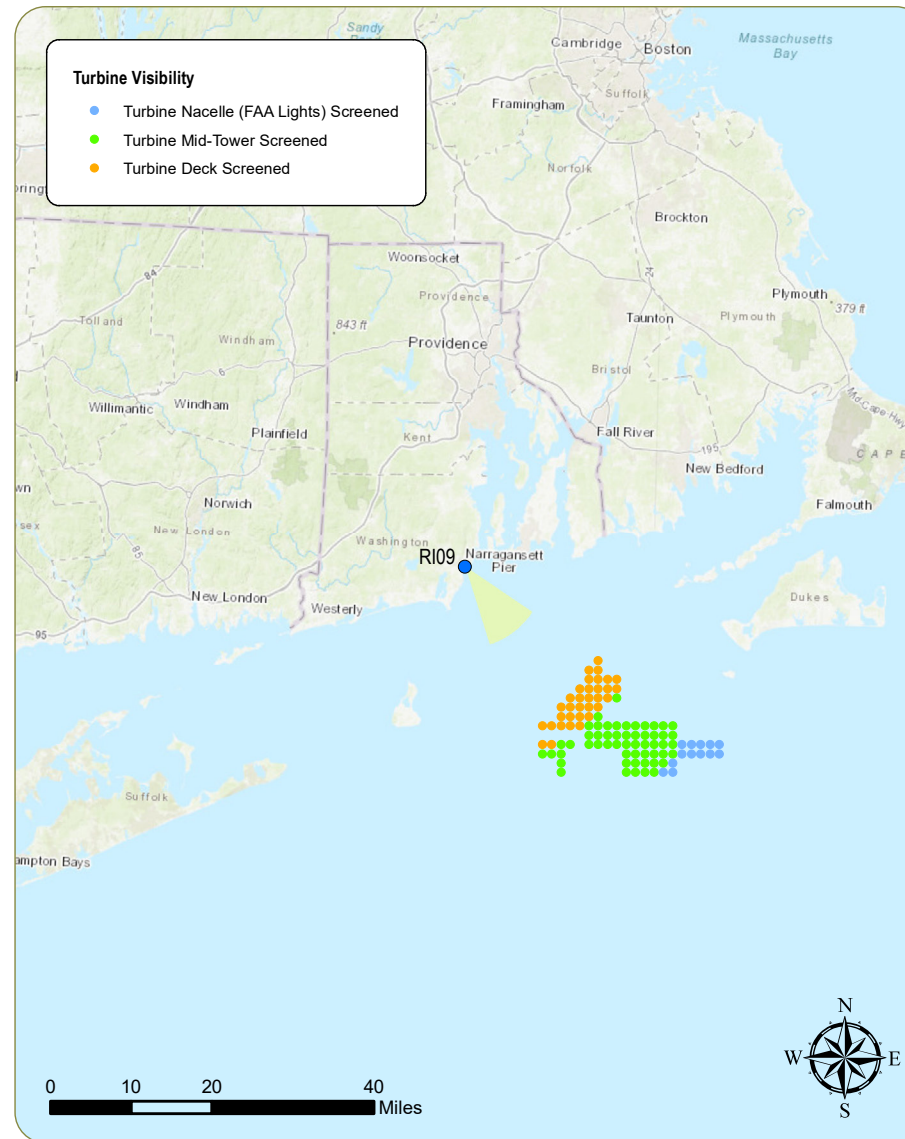
Landscape Similarity Zone: Shoreline Beach
 User Group: Local Residents, Tourists/Vacationers
 Aesthetic Resource: Narragansett Town Beach

Camera Information

Camera: Canon EOS 5D Mark IV
 Resolution: 30.4 Megapixels
 Lens Focal Length: 50 mm
 Camera Height: 10.5 feet AMSL

Viewing Instructions:

Printed at 100% the resulting simulation size is 15 inches wide by 10 inches high. At this size and focal length, the simulation should be viewed from a distance 21 inches.



Context Photo: View to the East-Southeast



Simulation Photo: View to the Southeast



Context Photo: View to the South-Southwest



Context Photo: View to the Southwest

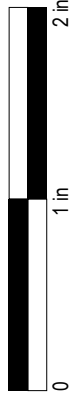
Revolution Wind Farm

Outer Continental Shelf, OCS-A 0486

Viewpoint RI09: View from Narragansett Beach, Narragansett

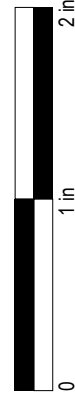
Appendix C: Sheet 151 of 153

Existing Conditions



This scale is designed to insure the simulation images are printed at the intended size.

Simulation



This scale is designed to insure the simulation images are printed at the intended size.