

Ocean Wind 1 (OCS-A 0498) and New York Bight Lease Areas: What is Different?

Ocean Wind 1 Lease Area (OCS-A 0498)

Project Overview

The Ocean Wind 1 lease area is in federal waters, approximately 13 nautical miles (15 statute miles) southeast of Atlantic City.

The wind energy facility would consist of up to 98 offshore wind turbines that could generate approximately 1,100 megawatts (MW) of renewable energy.

The Ocean Wind 1 lease area is adjacent to two other lease areas, the Atlantic Shores South lease area (OCS-A 0499) and the Orsted North America Inc. lease area (OCS-A 0532).

Environmental Review

BOEM developed a draft Environmental Impact Statement (EIS) for the construction and operations plan (COP) submitted by Ocean Wind, LLC for its proposed Ocean Wind 1 Offshore Wind Farm Project (Project). The draft EIS analyzes the potential environmental impacts from the Project as described in the COP (the proposed action) and the alternatives to the proposed action.

On March 30, 2021, BOEM published a Notice of Intent (NOI) and began collecting public comment on the scope of the draft EIS. On June 24, 2022, BOEM published a Notice of Availability (NOA) for the Ocean Wind 1 draft EIS. The NOA initiated a 45-day public review and comment period during which the public can provide comments on the draft EIS. BOEM subsequently extended the draft EIS public review and comment period by 15 days. Following the comment period, BOEM will analyze all comments received and will prepare a final EIS.

New York Bight Lease Areas

The New York Bight lease areas are in federal waters offshore New York and New Jersey.

They comprise six lease areas totaling 488,000 acres for potential wind energy. Leases offered in this sale could result in 5,600 to 7,000 megawatts (MW) of offshore wind energy, enough to power nearly two million homes.

BOEM is developing a draft Programmatic Environmental Impact Statement (PEIS) for the New York Bight wind development lease areas. The PEIS will describe the potential environmental and social impacts from the six leases within the New York Bight. The PEIS will analyze alternatives to the proposed action and how potential impacts may differ among these alternatives.

In this scoping phase, BOEM is engaging and consulting with stakeholder organizations, Federal agencies, and Tribal, State, and local governments to solicit comments on the scope of the draft PEIS, including potential alternatives and draft mitigation measures. The comment period begins on July 15, 2022, and ends on August 15, 2022. BOEM will analyze the comments received, conduct technical analyses, and prepare the draft PEIS for a period of 12-16 months after the public comment period closes.





New York Bight Draft Programmatic Environmental Impact Statement

Ocean Wind 1 Lease Area (OCS-A 0498)

Virtual Meetings & Public Involvement

BOEM conducted public meetings in April 2021 to solicit public comment on the scope of the draft EIS.

BOEM is now collecting public comments on the draft EIS through August 23, 2022. In support of this public comment period, BOEM hosted three virtual public hearings in July 2022 where participants could learn more about the project, ask questions, and provide oral testimony.

More information is available here: <https://www.boem.gov/renewable-energy/state-activities/ocean-wind-1>.

New York Bight Lease Areas

During this scoping phase, BOEM will host three virtual meetings in July and August 2022 for participants to learn more about the project, ask questions, and provide oral testimony.

BOEM is also taking steps to increase meaningful engagement with environmental justice communities and others serving those communities. With a focus on coordination with partners in this space, BOEM hopes to reduce the burden of engagement in offshore wind decision-making. These engagement efforts aim to improve understanding of potential adverse impacts from offshore wind activities on environmental justice communities.

More information and meeting registration is available here: <https://www.boem.gov/renewable-energy/state-activities/new-york-bight>.



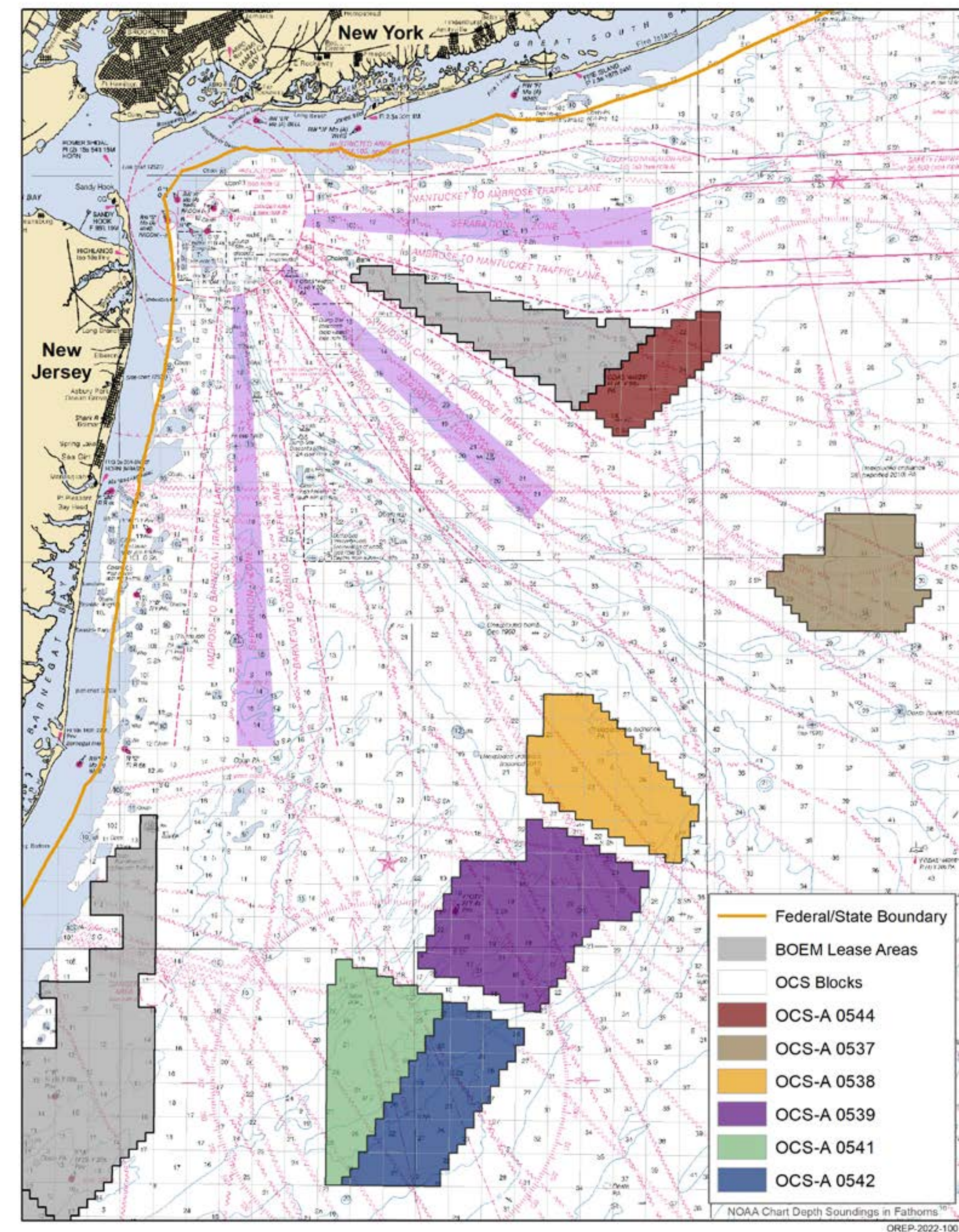
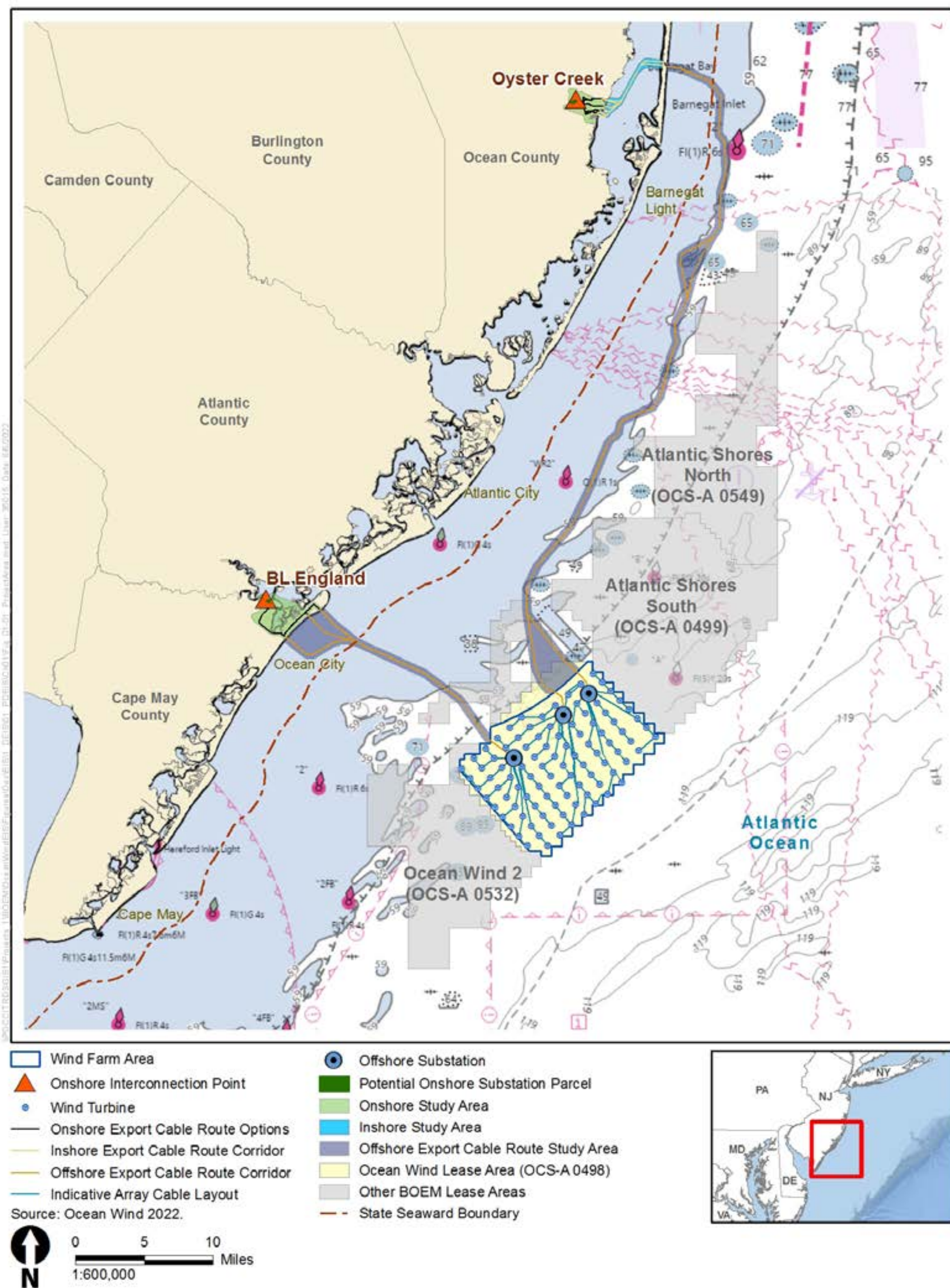


New York Bight Draft Programmatic Environmental Impact Statement

Ocean Wind 1 Lease Area (OCS-A 0498)

New York Bight Lease Areas

Lease Area Maps





New York Bight Draft Programmatic Environmental Impact Statement

Lease Areas Proximity

