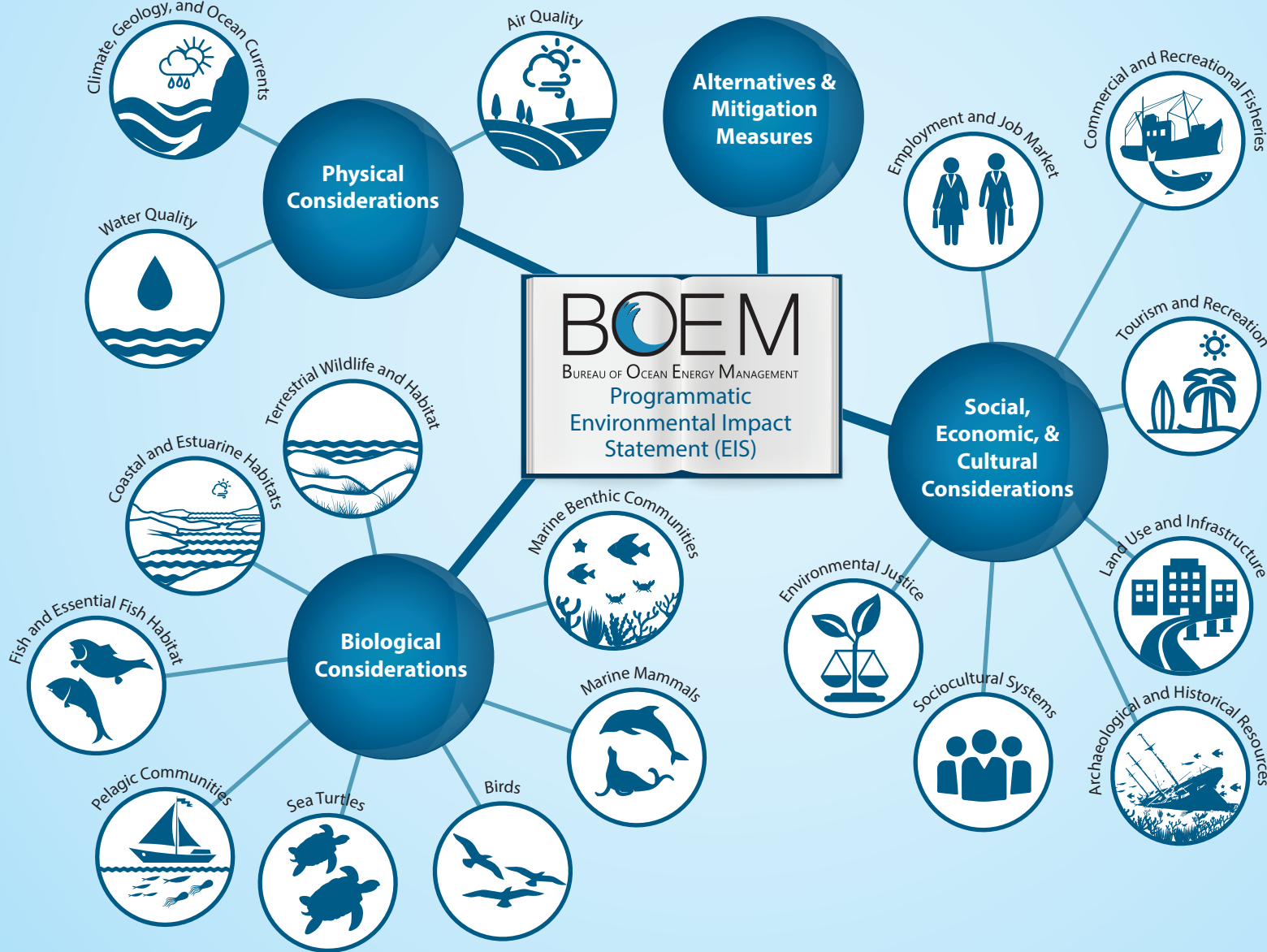


Resources to Consider for the Programmatic EIS



Your input provides a clearer, more focused approach and helps determine what is important to consider. When crafting a comment it is important that you follow these guidelines.

USEFUL COMMENTS ARE:

- Information-rich, specific, and localized.
- Clearly communicated, concise, and supported by scientific evidence or sound reasoning.
- Descriptive of how you or the environment will be affected.

QUESTIONS TO CONSIDER WHEN FORMULATING YOUR COMMENT:

Are there any other environmental resources and impacting factors?

What measures would you propose to reduce or eliminate impacts?

What resources, literature, GIS/maps, or other data should BOEM consider?

Comments that follow these guidelines are more likely to have an impact. One well-supported comment is often more influential than a thousand form letters.

The comment process is not a way to vote yes or no on the program.

RESOURCES TO CONSIDER FOR THE PROGRAMMATIC EIS

Physical Considerations



Air Quality:

How could the program affect emissions, changing air quality?



Water Quality:

How may the program change water quality?



Climate, Geology, and Ocean Currents:

What impacts could the program have on long-term physical processes?

Alternatives & Mitigation Measures



What alternatives to the proposed action might BOEM consider?



Can you suggest any measures that can be taken to minimize or eliminate potential negative impacts or enhance positive impacts?

Biological Considerations



Marine Benthic Communities:

What impacts are possible on species living on the ocean floor?



Pelagic Communities:

Are there potential impacts to species living in the ocean's water column below the surface?



Coastal and Estuarine Habitats:

What changes could occur in nearby areas that affect wetlands, rivers and beaches?



Marine Mammals:

Could the program affect whales, sea lions and other aquatic mammals?



Sea Turtles:

Are there potential impacts to sea turtles?



Birds:

How could the program affect migratory or other birds?



Fish and Essential Fish Habitat:

Is it possible the program will impact fish and their habitat?



Terrestrial Wildlife and Habitat:

Are there potential impacts to onshore habitat and wildlife?

Social, Economic, & Cultural Considerations



Archaeological and Historical Resources:

Such as shipwrecks, and other historic sites.



Land Use and Infrastructure:

How could the program affect existing structures and uses of nearby areas?



Commercial and Recreational Fisheries:

Commercial and public use of marine and coastal areas for fishing.



Tourism and Recreation:

Ecotourism, watersports, wildlife viewing and other leisure activities.



Sociocultural Systems:

What affects are possible on local communities, including subsistence activities?



Environmental Justice:

The fair treatment and involvement of all people.



Employment and Job Market:

How might the program affect employment and labor markets?