
Leasing Activities Information



U.S. Department of the Interior
Minerals Management Service
Gulf of Mexico OCS Region

FINAL NOTICE OF OCS SALE 166

Central Gulf of Mexico March 5, 1997

Attached is the Final Notice of OCS Sale (FNOS) 166, Central Gulf of Mexico, which is scheduled to be held on March 5, 1997, in New Orleans.

In addition to the Final Notice, this package consists of:

- o Central Gulf of Mexico Leased Lands List dated January 15, 1997
- o Unleased Split Blocks and Unleased Acreage of Blocks with Aliquots and Irregular Portions Under Lease
- o Debarment Certification Form
- o Preferred Bid Form and Envelope
- o Phone Numbers/Addresses of Bidders Form
- o Tracts Beyond U.S. Exclusive Economic Zone (possibly subject to future treaty agreement with Mexico) Map
- o Stipulations, Lease Terms, and Bidding Systems Map

The Royalty Suspension Areas for the Central Gulf of Mexico Map (March 1996) referred to in paragraph 4 of the Notice was included in the sale notice package for the last Central Gulf sale (Sale 157) but is not included with this package. There has been no change to this map. Prospective bidders requiring this map at this time may request it from the MMS Gulf of Mexico (GOM) Regional Office Public Information Unit as indicated in paragraph 14(a) of the Notice.

The Biological Stipulation Map Package for the Central Gulf referred to in paragraph 13 of the Notice has been included in the sale notice package for the past several years but is not included with this package. There have been no changes to those maps. Prospective bidders requiring the Map Packages at this time may request them from the MMS GOM OCS Regional Office Public Information Unit as indicated in paragraph 14(a) of the Notice. Blocks affected by the biological stipulation are indicated on the Stipulations, Lease Terms, and Bidding Systems Map included in this package.

Prospective bidders are reminded of the requirement to submit a statement notifying MMS of possession of certain geophysical data, and, upon request, providing MMS with those data. See paragraphs 3(b) and 14(k) of the Notice, and the document "Trial Procedures for Access to Certain Geophysical Data and Information in the Gulf of Mexico" revised January 19, 1996, available from the MMS GOM OCS Regional Office Public Information Unit as indicated in paragraph 14(a) of the Notice.

Certain details of the requirement to perform certain actions within five years of an eight-year lease are further elaborated in this Notice; see paragraph 14(d).

NOTICE: The following items have changed since Sale 157

Preferred Bid Form and Bid Envelope. Bidders are strongly urged to use the formats of the Preferred Bid Form and Preferred Bid Envelope included in this package. Note that "Amount Per Acre" is no longer desired on the Bid Form, and it is requested that "Area Number" be included on both the Bid Form and the Bid Envelope. See also paragraph 3(a) of the Notice.

Debarment. Paragraph 10(b) of the Notice requires successful bidders to provide, prior to lease award, a certification that a bidder is not excluded from participation by Federal debarment procedures. A certification form is provided in this package for that purpose and is available from the MMS GOM OCS Regional Office Public Information Unit (paragraph 14(a)). For lease issuance purposes, only Part A of the form applies. **Bidders who have already filed this certification need not do so again for this sale unless new or revised information applicable to that certification has become available.**

Deepwater Operations Plans. Bidders are reminded that MMS Notice to Lessees (NTL) 96-4N, which became effective on August 19, 1996, requires that a Deepwater Operations Plan be submitted for all deepwater development projects (water depths greater than 304.8 meters (1,000 feet)) and for certain other projects; see paragraph 14(p) of the Notice.

Lease Terms. In a Final Rule published in the Federal Register on October 30, 1996, the area in which tracts are leased for eight years (initial term) is changed from 400 to 900 meter water depths to 400 to 800 meters (for leases resulting from this and future sales), making lease terms and royalty relief water depths consistent with each other. Leases in water depths greater than 800 meters will have an initial lease term of ten years. See the Stipulations, Lease Terms, and Bidding Systems Map included in this package.

NOTE: No additional blocks have become available for leasing since publication of the latest "Gulf of Mexico Leasing Activity Update List (January 15, 1997)":

NOT OFFERED: Main Pass Area, South and East Addition, Blocks 253 and 254 (under appeal)
Mobile Area Blocks 826 and 829 (South of Baldwin County, Alabama)

NOTE: Certain tracts which are beyond the U.S. Exclusive Economic Zone are offered for leasing but they may later be subject to a treaty agreement with Mexico. See paragraph 12(b) of the Notice and the "Tracts Beyond U.S. Exclusive Economic Zone (possibly subject to future treaty agreement with Mexico) Map" provided with this package.

STATISTICAL INFORMATION (Sale 166)

- o **SIZE:** 5,063 Unleased blocks; 27.2 million acres
- o **LEASE TERMS:**
 - 5 Year - 1,197 Blocks - Water depths less than 400 meters
 - 8 Year - 155 Blocks - Water depths between 400-800 meters
 - 10 Year - 3,711 Blocks - Water depths greater than 800 meters
- o **BIDDING SYSTEMS:**
 - 12 1/2% Royalty - 3,866 Blocks
 - 16 2/3% Royalty - 1,197 Blocks
- o **ROYALTY SUSPENSION AREAS:**
 - 200-400 Meter Royalty Suspension Area - 93 Blocks
 - 400-800 Meter Royalty Suspension Area - 155 Blocks
 - 800 Meter and Greater Royalty Suspension Area - 3,711 Blocks
- o **MINIMUM BID:** \$25 per acre or fraction thereof

For more information on this Final Notice of Sale, potential bidders are advised to contact Mr. Charles Hill of the MMS GOM OCS Region Sales and Support Unit at (504) 736-2795.

-MMS-

DEPARTMENT OF THE INTERIOR

Minerals Management Service

Outer Continental Shelf, Central Gulf of Mexico, Oil and Gas
Lease Sale 166 - Final Notice of Sale

1. Authority. This Notice is published pursuant to the Outer Continental Shelf (OCS) Lands Act (43 U.S.C. 1331-1356, as amended) and the regulations issued thereunder (30 CFR Part 256).

2. Filing of Bids.

(a) Filing of Bids. Sealed bids will be received by the Regional Director (RD), Gulf of Mexico Region, Minerals Management Service (MMS), 1201 Elmwood Park Boulevard, New Orleans, Louisiana 70123-2394. Bids may be delivered in person to that address during normal business hours (8 a.m. to 4 p.m., Central Standard Time (c.s.t.)) until the Bid Submission Deadline at 10 a.m. Tuesday, March 4, 1997. Hereinafter, all times cited in this Notice refer to c.s.t. unless otherwise stated. Bids will not be accepted the day of Bid Opening, Wednesday, March 5, 1997. Bids received by the RD later than the time and date specified above will be returned unopened to the bidders. Bids may not be modified or withdrawn unless written modification or written withdrawal request is received by the RD prior to 10 a.m. Tuesday, March 4, 1997. Bid Opening Time will be 9 a.m., Wednesday, March 5, 1997, at the Hyatt Regency Hotel, 500 Poydras Plaza, New Orleans, Louisiana. All bids must be submitted and will be considered in accordance with applicable regulations, including 30 CFR Part 256. The list of restricted joint bidders which applies to this sale appeared in the Federal Register at 61 FR 54213, published on October 17, 1996.

(b) Natural Disasters. In the event a natural disaster (such as widespread flooding) or other occurrence causes the MMS Gulf of Mexico Regional Office to be closed on Tuesday, March 4, 1997, bids will be accepted until 9 a.m. Wednesday, March 5, 1997, at the site of bid opening specified above. Under these conditions, bids may be modified or withdrawn upon written notification up until 9 a.m. Wednesday, March 5, 1997. Closure of the office may be determined by calling (504) 736-0557 and hearing a recorded message to that effect.

3. Method of Bidding.

(a) Submission of Bids. A separate signed bid in a sealed envelope labeled "Sealed Bid for Oil and Gas Lease Sale 166, not to be opened until 9 a.m., c.s.t., Wednesday, March 5, 1997" must be submitted for each tract bid upon. The sealed envelope and the bid should contain the following information: the company name, Gulf of Mexico Company Number (GOM Company Number), area number (e.g., LA1 for West Cameron, NH16-04 for Mobile), area name (abbreviations acceptable), and the block number of the tract bid upon. In addition, the total amount bid to be considered by MMS must be in whole dollar amount. Any cent amount above the whole dollar will be ignored by MMS.

Bidders must submit with each bid 1/5th of the cash bonus, in cash or by cashier's check, bank draft, or certified check, payable to the order of the U.S. Department of the Interior--Minerals Management Service. For identification purposes, the following information must appear on the check or draft: company name, GOM Company Number, and the area and block bid on (abbreviation acceptable). No bid for less than all of the unleased portion(s) of a block will be considered.

All documents must be executed in conformance with signatory authorizations on file in the MMS Gulf of Mexico Regional Office. Partnerships also need to submit or have on file a list of signatories authorized to bind the partnership. Bidders submitting joint bids must state on the bid form the proportionate interest of each participating bidder, in percent to a maximum of five decimal places, e.g., 33.33333 percent. Other documents may be required of bidders under 30 CFR 256.46. Bidders are warned against violation of 18 U.S.C. 1860 prohibiting unlawful combination or intimidation of bidders.

(b) Submission of Statement(s) Regarding Certain Geophysical Data. Each company submitting a bid, or participating as a joint bidder in such a bid, shall submit, prior to the Bid Submission Deadline specified in paragraph 2 of this Notice, a statement or statements identifying any processed or reprocessed pre and post stack depth migrated geophysical data in their possession or control pertaining to each and every block on which they are participating as a bidder. The existence, extent, type of such data, and identification of specific lines or 3D surveys must be clearly stated. In addition, the statement shall certify that no such data are in their possession for any other blocks on which they participate as a bidder. The statement shall be submitted in an envelope separate from those containing bids and shall be clearly marked; an example of a preferred format for the statement and the envelope is included in the document titled "Trial Procedures for Access to Certain Geophysical Data in the Gulf of Mexico" (revised January 19, 1996). Only one statement per bidder is required for each sale, but more than one may be submitted if desired, provided that all tracts bid on by that company are covered in the one or more statements.

Paragraph 14(k), Information to Lessees, contains additional information pertaining to geophysical data.

4. Bidding, Yearly Rental, and Royalty Systems. The following bidding, yearly rental, and royalty systems apply to this sale:

(a) Bidding Systems. All bids submitted at this sale must provide for a cash bonus in the amount of \$25.00 or more per acre or fraction thereof.

(b) Yearly Rental. All leases awarded on tracts in water depths of 200 meters and greater as depicted on the map "Royalty Suspension Areas for the Central Gulf of Mexico (March 1996)" (i.e., tracts in any of the three royalty suspension areas) will provide for a yearly rental payment of \$7.50 per acre or fraction thereof until initial production is obtained. This map is available from the MMS Gulf of Mexico Regional Office Public Information Unit (see paragraph 14(a) of this Notice).

All leases awarded on other tracts (i.e., those in water depths of less than 200 meters) will provide for a yearly rental

payment of \$5.00 per acre or fraction thereof until initial production is obtained.

(c) Royalty Systems. After initial production is obtained, leases will provide for a minimum royalty of the amount per acre or fraction thereof as specified as the yearly rental in paragraph 4(b) above, except during periods of royalty suspension as discussed in paragraph 4(c)(3) of this Notice. The following royalty systems will be used in this sale:

(1) Leases with a 12 1/2-Percent Royalty. This royalty rate applies to tracts in water depths of 400 meters or greater; this area is shown on the Stipulations, Lease Terms, and Bidding Systems Map applicable to this Notice (see paragraph 13). Leases issued on the tracts offered in this area will have a fixed royalty rate of 12 1/2 percent, except during periods of royalty suspension (see paragraph 4(c)(3) of this Notice).

(2) Leases with a 16 2/3-Percent Royalty. This royalty rate applies to tracts in water depths of less than 400 meters (see aforementioned map). Leases issued on the tracts offered in this area will have a fixed royalty rate of 16 2/3 percent, except during periods of royalty suspension for leases in water depths 200 meters or greater (see paragraph 4(c)(3) of this Notice).

(3) Royalty Suspension. In accordance with Public Law 104-58, signed by the President on November 28, 1995, MMS has developed procedures providing for the suspension of royalty payments on production from eligible leases issued as a result of this sale. MMS will allow only one royalty suspension volume per field regardless of the number of eligible leases producing the field. For purposes of this paragraph, an eligible lease is one that: is located in the Gulf of Mexico in water depths 200 meters or deeper; lies wholly west of 87 degrees, 30 minutes West longitude; and is offered subject to a royalty suspension volume authorized by statute.

An eligible lease from this sale may receive a royalty suspension volume only if it is in a field where no currently active lease produced oil or gas (other than test production) before November 28, 1995. The following applies only to eligible leases in fields meeting this condition.

(i) The royalty suspension volumes are:

- 17.5 million barrels of oil equivalent (mmboe) in 200 to 400 meters of water;
- 52.5 mmboe in 400 to 800 meters of water; and
- 87.5 mmboe in 800 meters of water and greater.

A map titled "Royalty Suspension Areas for the Central Gulf of Mexico (March 1996)" depicting blocks in which such suspensions may apply is currently available from the MMS Gulf of Mexico Regional Office Public Information Unit (see paragraph 14(a) of this Notice).

(ii) When production first occurs from any of the eligible leases in a field (not including test production), MMS will determine the royalty suspension volume applicable to eligible lease(s) in that field. The determination is based on the royalty suspension volumes and the map specified in paragraph 4(c)(3)(i) above.

(iii) If a new field consists of eligible leases in different water depth categories, the royalty suspension volume associated with the deepest eligible lease applies.

(iv) If an eligible lease is the only eligible lease in a field, royalty is not owed on the production from the lease up to the amount of the applicable royalty suspension volume.

(v) If a field consists of more than one eligible lease, payment of royalties on the eligible leases' initial production is suspended until their cumulative production equals the field's established royalty suspension volume. The royalty suspension volume for each eligible lease is equal to each lease's actual production (or production allocated under an approved unit agreement) until the field's established royalty suspension volume is reached.

(vi) If an eligible lease is added to a field that has an established royalty suspension volume, the field's royalty suspension volume will not change even if the added lease is in deeper water. The additional lease may receive a royalty

suspension volume only to the extent of its production before the cumulative production from all eligible leases in the field equals the field's previously established royalty suspension volume.

(vii) If MMS reassigns a well on an eligible lease to another field, the past production from that well will count toward the royalty suspension volume, if any, specified for the new field to which it is assigned. The past production will not be counted toward the suspension volume, if any, from the first field.

(viii) An eligible lease may receive a royalty suspension volume only if the entire lease is west of 87 degrees, 30 minutes West longitude. A field that lies on both sides of this meridian will receive a royalty suspension volume only for those eligible leases lying entirely west of the meridian.

(ix) An eligible lease may obtain more than one royalty suspension volume. If a new field is discovered on an eligible lease that already benefits from the royalty suspension volume for another field, production from that new field receives a separate royalty suspension.

(x) A lessee must measure natural gas production subject to the royalty suspension volume as follows: 5.62 thousand cubic feet of natural gas equals one barrel of oil equivalent, as measured fully saturated at 15.025 psi, 60 degrees F.

(xi) In any year during which the arithmetic average of the closing prices on the New York Mercantile Exchange for light sweet crude oil exceeds \$28.00 per barrel, royalties on the production of oil must be paid at the lease stipulated royalty rate (see paragraphs 4(c)(1) and (2) above), and production during such years counts toward the royalty suspension volume.

In any year during which the arithmetic average of the closing prices on the New York Mercantile Exchange for natural gas exceeds \$3.50 per million British thermal units, royalties on the production of natural gas must be paid at the lease stipulated royalty rate (see paragraphs 4(c)(1) and (2) above), and production during such years counts toward the royalty suspension volume.

These prices for oil and natural gas are as of the end of 1994 and must be adjusted for subsequent years by the percentage by which the implicit price deflator for the gross domestic product changed during the preceding calendar year.

(xii) A royalty suspension will continue until the end of the month in which the cumulative production from eligible leases in the field reaches the royalty suspension volume for the field.

Paragraph 14(m), Information to Lessees, contains additional information pertaining to royalty suspension matters.

5. Equal Opportunity. The certification required by 41 CFR 60-1.7(b) and Executive Order No. 11246 of September 24, 1965, as amended by Executive Order No. 11375 of October 13, 1967, on the Compliance Report Certification Form, Form MMS-2033 (June 1985), and the Affirmative Action Representation Form, Form MMS-2032 (June 1985) must be on file in the MMS Gulf of Mexico Regional Office prior to lease award (see paragraph 14(e)).

6. Bid Opening. Bid opening will begin at the bid opening time stated in paragraph 2. The opening of the bids is for the sole purpose of publicly announcing bids received, and no bids will be accepted or rejected at that time.

7. Deposit of Payment. Any cash, cashier's checks, certified checks, or bank drafts submitted with a bid may be deposited by the Government in an interest-bearing account in the U.S. Treasury during the period the bids are being considered. Such a deposit does not constitute and shall not be construed as acceptance of any bid on behalf of the United States.

8. Withdrawal of Tracts. The United States reserves the right to withdraw any tract from this sale prior to issuance of a written acceptance of a bid for the tract.

9. Acceptance, Rejection, or Return of Bids. The United States reserves the right to reject any and all bids. In any case, no bid will be accepted, and no lease for any tract will be awarded to any bidder, unless:

(a) the bidder has complied with all requirements of this Notice and applicable regulations;

(b) the bid is the highest legal bid; and

(c) the amount of the bid has been determined to be adequate by the authorized officer.

No bonus bid will be considered for acceptance unless it provides for a cash bonus in the amount of \$25.00 or more per acre or fraction thereof. Any bid submitted which does not conform to the requirements of this Notice, the OCS Lands Act, as amended, and other applicable regulations may be returned to the person submitting that bid by the RD and not considered for acceptance.

To ensure that the Government receives a fair return for the conveyance of lease rights for this sale, the MMS has modified its two-phased process for bid adequacy determination. The MMS will not automatically accept legal high bids on confirmed and wildcat tracts which receive three or more bids. Such tracts will be evaluated in accordance with the remaining elements of the MMS bid adequacy procedures. This modification was described in the Federal Register on March 29, 1996 (61 FR 14162). A copy of the revised bid adequacy procedures ("Summary of Procedures for Determining Bid Adequacy at Offshore Oil and Gas Lease Sales: Effective April 1996, with Sale 157") is available from the MMS Gulf of Mexico Regional Office Public Information Unit (see paragraph 14(a) of this Notice).

10. Successful Bidders. The following requirements apply to successful bidders in this sale:

(a) Lease Issuance. Each person who has submitted a bid accepted by the authorized officer will be required to execute copies of the lease (Form MMS-2005 (March 1986) as amended), pay the balance of the cash bonus bid along with the first year's annual rental for each lease issued, by electronic funds transfer in accordance with the requirements of 30 CFR 218.155, and satisfy the bonding requirements of 30 CFR 256, Subpart I, as amended.

Paragraphs 14(n) and (o), Information to Lessees, contain additional information pertaining to this matter.

(b) Certification Regarding Nonprocurement Debarment, Suspension, and Other Responsibility Matters -- Primary Covered Transactions. Each person involved as a bidder in a successful high bid must have on file, in the MMS Gulf of Mexico Regional Office Adjudication Office, a currently valid certification that the person is not excluded from participation in primary covered transactions under Federal nonprocurement programs and activities. A certification previously provided to that office remains currently valid until new or revised information applicable to that certification becomes available. In the event of new or revised applicable information, a subsequent certification is required before lease issuance can occur. Persons submitting such certifications should review the requirements of 43 C.F.R., Part 12, Subpart D, as amended in the Federal Register of June 26, 1995, at 60 FR 33035.

Copies of the certification form are available from the MMS Gulf of Mexico Regional Office Public Information Unit. See Paragraph 14(a) of this Notice for directions on how to obtain the forms.

11. Leasing Maps and Official Protraction Diagrams. Tracts offered for lease may be located on the following Leasing Maps or Official Protraction Diagrams which may be purchased from the MMS Gulf of Mexico Regional Office Public Information Unit (see paragraph 14(a)):

(a) Outer Continental Shelf (OCS) Leasing Maps--Louisiana Nos. 1 through 12. This is a set of 30 maps which sells for \$32.

(b) Outer Continental Shelf Official Protraction Diagrams. These diagrams sell for \$2.00 each.

NH 15-12	Ewing Bank (rev. 12/02/76).
NH 16-4	Mobile (rev. 02/23/93).
NH 16-7	Viosca Knoll (rev. 12/02/76).
NH 16-10	Mississippi Canyon (rev. 05/01/96).
NG 15-3	Green Canyon (rev. 12/02/76).
NG 15-6	Walker Ridge (rev. 12/02/76).
NG 15-9	(No Name) (rev. 04/27/89).
NG 16-1	Atwater Valley (rev. 11/10/83).
NG 16-4	Lund (rev. 08/22/86).
NG 16-7	(No Name) (rev. 04/27/89).

12. Description of the Areas Offered for Bids.

(a) Acreage Available for Leasing. Acreage of blocks is shown on Leasing Maps and Official Protraction Diagrams. Some of these blocks, however, may be partially leased, or transected by administrative lines such as the Federal/State jurisdictional line. Information on the unleased portions of such blocks, including the exact acreage, is included in the following document as a part of this Notice and is currently available from the MMS Gulf of Mexico Regional Office Public Information Unit (see paragraph 14(a)):

Central Gulf of Mexico Lease Sale 166 - Final - Unleased Split Blocks and Unleased Acreage of Blocks with Aliquots and Irregular Portions Under Lease.

(b) Tracts not available for leasing. The areas offered for leasing include all those blocks shown on the OCS Leasing Maps and Official Protraction Diagrams listed in paragraph 11(a) and (b), except for those blocks or partial blocks already under lease and those blocks or partial blocks listed below. A list of Central Gulf of Mexico tracts currently under lease is included in the Sale Notice Package available from the MMS Gulf of Mexico Regional Office Public Information Unit (see paragraph 14(a)).

Although currently unleased, the following tracts are currently under appeal and therefore unavailable for leasing: Main Pass Area, South and East Addition, Blocks 253 and 254.

Although currently unleased, the following tracts are not offered in this sale: Mobile Area, Blocks 826 and 829.

NOTE: As noted in the Final Notices of Sales for Sale 157 and 161, tracts or portions of tracts beyond the United States Exclusive Economic Zone are offered based upon provisions of the 1982 Law of the Sea Convention, and could be subject to a continental shelf delimitation agreement between the United States and Mexico.

A list of these tracts or portions of tracts and a map are included in the Sale Notice Package available from the MMS Gulf of Mexico Regional Office Public Information Unit (see paragraph 14(a)).

13. Lease Terms and Stipulations.

(a) Leases resulting from this sale will have initial terms as shown on the Stipulations, Lease Terms, and Bidding Systems Map applicable to this Notice. Copies of the map and lease form are available from the MMS Gulf of Mexico Regional Office Public Information Unit (see paragraph 14(a)).

(b) The applicability of the stipulations which follow is as shown on the map described in paragraph 13(a) and as supplemented by references in this Notice.

Stipulation No. 1--Topographic Features.

(This stipulation will be included in leases located in the areas so indicated in the Biological Stipulation Map Package associated with this Notice which is available from the Gulf of Mexico Regional Office Public Information Unit (see paragraph 14(a)).

The banks that cause this stipulation to be applied to blocks of the Central Gulf are:

<u>Bank Name</u>	No Activity Zone Defined by <u>Isobath (meters)</u>
McGrail Bank	85
Bouma Bank	85
Rezak Bank	85
Sidner Bank	85
Rankin Bank	85
Sackett Bank[2]	85
Ewing Bank	85
Diaphus Bank[2]	85
Parker Bank	85
Jakkula Bank	85
Sweet Bank[1]	85
Bright Bank	85
Geyer Bank[3]	85
MacNeil Bank[3]	82
Alderdice Bank	80
Fishnet Bank[2]	76

29 Fathom Bank	64
Sonnier Bank	55

- [1] Only paragraph (a) of the stipulation applies.
[2] Only paragraphs (a) and (b) apply.
[3] Western Gulf of Mexico bank with a portion of its "3-Mile Zone" in the Central Gulf of Mexico.

(a) No activity including structures, drilling rigs, pipelines, or anchoring will be allowed within the listed isobath ("No Activity Zone" as shown in the aforementioned Biological Stipulation Map Package) of the banks as listed above.

(b) Operations within the area shown as "1,000-Meter Zone" in the aforementioned Biological Stipulation Map Package shall be restricted by shunting all drill cuttings and drilling fluids to the bottom through a downpipe that terminates an appropriate distance, but no more than 10 meters, from the bottom.

(c) Operations within the area shown as "1-Mile Zone" in the aforementioned Biological Stipulation Map Package shall be restricted by shunting all drill cuttings and drilling fluids to the bottom through a downpipe that terminates an appropriate distance, but no more than 10 meters, from the bottom. (Where there is a "1-Mile Zone" designated, the "1,000-Meter Zone" in paragraph (b) is not designated.)

(d) Operations within the area shown as "3-Mile Zone" in the aforementioned Biological Stipulation Map Package shall be restricted by shunting all drill cuttings and drilling fluids from development operations to the bottom through a downpipe that terminates an appropriate distance, but no more than 10 meters, from the bottom.

Stipulation No. 2--Live Bottoms.

(To be included only on leases in the following blocks: Main Pass Area, South and East Addition, Blocks 190, 194, 198, 219-226, 244-266, 276-290; Viosca Knoll, Blocks 473-476, 521, 522, 564, 565, 566, 609, 610, 654, 692-698, 734, 778.)

For the purpose of this stipulation, "live bottom areas" are defined as seagrass communities; or those areas which contain

biological assemblages consisting of such sessile invertebrates as sea fans, sea whips, hydroids, anemones, ascidians, sponges, bryozoans, or corals living upon and attached to naturally occurring hard or rocky formations with rough, broken, or smooth topography; or areas whose lithotope favors the accumulation of turtles, fishes, and other fauna.

Prior to any drilling activities or the construction or placement of any structure for exploration or development on this lease, including, but not limited to, anchoring, well drilling, and pipeline and platform placement, the lessee will submit to the Regional Director (RD) a live bottom survey report containing a bathymetry map prepared utilizing remote sensing techniques. The bathymetry map shall be prepared for the purpose of determining the presence or absence of live bottoms which could be impacted by the proposed activity. This map shall encompass such an area of the seafloor where surface disturbing activities, including anchoring, may occur.

If it is determined that the live bottoms might be adversely impacted by the proposed activity, the RD will require the lessee to undertake any measure deemed economically, environmentally, and technically feasible to protect the pinnacle area. These measures may include, but are not limited to, the following:

- (a) the relocation of operations; and
- (b) the monitoring to assess the impact of the activity on the live bottoms.

Stipulation No. 3--Military Areas.

(This stipulation will be included in leases located within the Warning Areas and Eglin Water Test Areas 1 and 3, as shown on the map described in paragraph 13(a)).

(a) Hold and Save Harmless

Whether compensation for such damage or injury might be due under a theory of strict or absolute liability or otherwise, the lessee assumes all risks of damage or injury to persons or property, which occur in, on, or above the Outer Continental Shelf (OCS), to any persons or to any property of any person or

persons who are agents, employees, or invitees of the lessee, its agents, independent contractors, or subcontractors doing business with the lessee in connection with any activities being performed by the lessee in, on, or above the OCS, if such injury or damage to such person or property occurs by reason of the activities of any agency of the United States Government, its contractors or subcontractors, or any of its officers, agents or employees, being conducted as a part of, or in connection with, the programs and activities of the command headquarters listed in the following table.

Notwithstanding any limitation of the lessee's liability in Section 14 of the lease, the lessee assumes this risk whether such injury or damage is caused in whole or in part by any act or omission, regardless of negligence or fault, of the United States, its contractors or subcontractors, or any of its officers, agents, or employees. The lessee further agrees to indemnify and save harmless the United States against all claims for loss, damage, or injury sustained by the lessee, or to indemnify and save harmless the United States against all claims for loss, damage, or injury sustained by the agents, employees, or invitees of the lessee, its agents, or any independent contractors or subcontractors doing business with the lessee in connection with the programs and activities of the aforementioned military installation, whether the same be caused in whole or in part by the negligence or fault of the United States, its contractors, or subcontractors, or any of its officers, agents, or employees and whether such claims might be sustained under a theory of strict or absolute liability or otherwise.

(b) Electromagnetic Emissions

The lessee agrees to control its own electromagnetic emissions and those of its agents, employees, invitees, independent contractors or subcontractors emanating from individual designated defense warning areas in accordance with requirements specified by the commander of the command headquarters listed in the following table to the degree necessary to prevent damage to, or unacceptable interference with, Department of Defense flight, testing, or operational activities, conducted within individual designated warning areas. Necessary monitoring control, and coordination with the lessee, its agents, employees, invitees, independent contractors or

subcontractors, will be effected by the commander of the appropriate onshore military installation conducting operations in the particular warning area; provided, however, that control of such electromagnetic emissions shall in no instance prohibit all manner of electromagnetic communication during any period of time between a lessee, its agents, employees, invitees, independent contractors or subcontractors and onshore facilities.

(c) Operational

The lessee, when operating or causing to be operated on its behalf, boat, ship, or aircraft traffic into the individual designated warning areas shall enter into an agreement with the commander of the individual command headquarters listed in the following list, upon utilizing an individual designated warning area prior to commencing such traffic. Such an agreement will provide for positive control of boats, ships, and aircraft operating into the warning areas at all times.

W-155A and B (For Agreement) - Chief, Naval Air Training, Naval Air Station, Office No. 206, Corpus Christi, Texas
78419-5100, Telephone: (512) 939-3862/2621

W-155A and B (For Operational Control) - Fleet Area Control & Surveillance Facility (FACSFAC), Operations, Naval Air Station, Pensacola, Florida 32508, Telephone: (904) 452-2735/4671

W-92 - Naval Air Station, Air Operations Department, Air Traffic Division/Code 52, New Orleans, Louisiana 70146-5000,
Telephone: (504) 393-3100/3101

W-453 - Air National Guard - CRTC/ACTS, Scheduling Office, 4715 Hews Avenue Building 1, Gulfport, Mississippi 39507,
Telephone: (601) 867-2432/2433

Eglin Water Test Areas 1 and 3 - Air Force Development Test Center, Strategic Plans Division AFDTC/DRP, 101 West "D" Avenue, Suite 125, Eglin AFB, Florida 32542-5495, Telephone:
(904) 882-3899/4188

14. Information to Lessees

(a) Supplemental Documents. For copies of the various documents identified as available from the MMS Gulf of Mexico Regional Office, prospective bidders should contact the Public Information Unit, Minerals Management Service, 1201 Elmwood Park Boulevard, New Orleans, Louisiana 70123-2394, either in writing or by telephone at (504) 736-2519 or (800) 200-GULF. For additional information, contact the Regional Supervisor for Leasing and Environment at that address or by telephone at (504) 736-2759.

(b) Navigation Safety. Operations on some of the blocks offered for lease may be restricted by designation of fairways, precautionary zones, anchorages, safety zones, or traffic separation schemes established by the U.S. Coast Guard pursuant to the Ports and Waterways Safety Act (33 U.S.C. 1221 et seq.), as amended, and the Deepwater Port Act (33 U.S.C. 1501-1524). Bidders are advised to review U.S. Coast Guard regulations (particularly 33 CFR Part 150, Appendix A; see also 59 FR 17480 published on April 13, 1994) regarding the safety zone around the Louisiana Offshore Oil Port (LOOP).

U.S. Army Corps of Engineers (COE) permits are required for construction of any artificial islands, installations, and other devices permanently or temporarily attached to the seabed located on the OCS in accordance with section 4(e) of the OCS Lands Act, as amended.

For additional information, prospective bidders should contact Lt. Commander Ken Parris, Assistant Marine Port Safety Officer, 8th Coast Guard District, Hale Boggs Federal Building, New Orleans, Louisiana 70130, (504) 589-6901. For COE information, prospective bidders should contact Mr. Ron Ventola CELMN-OD-S, Post Office Box 60267, New Orleans, Louisiana 70160-0267, (504) 862-2255.

(c) Offshore Pipelines. Bidders are advised that the Department of the Interior and the Department of Transportation have entered into a Memorandum of Understanding, dated December 10, 1976, concerning the design, installation, operations, inspection, and maintenance of offshore pipelines. Bidders

should consult both Departments for regulations applicable to offshore pipelines.

(d) 8-Year Leases. Bidders are advised that any lease issued for a term of 8 years will be canceled shortly after the end of the fifth year, following notice pursuant to the OCS Lands Act, as amended, if within the initial 5-year period of the lease, the drilling of an exploratory well has not been initiated; or if initiated, the well has not been drilled in conformance with the approved exploration plan criteria; or if there is not a suspension of operations in effect. Furthermore, a rental payment for the sixth year will be due despite the cancellation. Bidders are referred to 30 CFR 256.37 and the MMS Gulf of Mexico Regional Office Letter to Lessees and Operators of February 13, 1995.

(e) Affirmative Action. Revision of Department of Labor regulations on affirmative action requirements for Government contractors (including lessees) has been deferred, pending review of those regulations (see Federal Register of August 25, 1981, at 46 FR 42865 and 42968). Should changes become effective at any time before the issuance of leases resulting from this sale, section 18 of the lease form (Form MMS-2005, March 1986), would be deleted from leases resulting from this sale. In addition, existing stocks of the affirmative action forms described in paragraph 5 of this Notice contain language that would be superseded by the revised regulations at 41 CFR 60-1.5(a)(1) and 60-1.7(a)(1). Submission of Form MMS-2032 (June 1985) and Form MMS-2033 (June 1985) will not invalidate an otherwise acceptable bid, and the revised regulations' requirements will be deemed to be part of the existing affirmative action forms.

(f) Ordnance Disposal Areas. Bidders are cautioned as to the existence of two inactive ordnance disposal areas in the Mississippi Canyon area, shown on the map described in paragraph 13(a). These areas were used to dispose of ordnance of unknown quantity and composition. Water depths range from approximately 750 to 1,525 meters. Bottom sediments in both areas are soft, consisting of silty clays. Exploration and development activities in these areas require precautions commensurate with the potential hazards.

The U.S. Air Force has released an indeterminable amount of unexploded ordnance throughout Eglin Water Test Areas 1 and 3. The exact location of the unexploded ordnance is unknown, and lessees are advised that all lease blocks included in this sale within these water test areas should be considered potentially hazardous to drilling and platform and pipeline placement.

(g) Communications Towers. The Department of Defense, U.S. Air Force, has installed seven military communications towers in the Chandeleur/Mobile/Viosca Knoll area which support Air Combat Maneuvering Instrumentation (ACMI). This project may impose certain restrictions on oil and gas activities in that area since no activity can take place within 500 feet of a tower site, and unobstructed lines of sight must be maintained between towers. The seven towers are located within Mobile, Blocks 769, 819, and 990; Viosca Knoll, Block 116; Chandeleur Area, Blocks 33 and 61; and Chandeleur Area, East Addition, Block 39. Information and maps of the specific locations and line of sight crossings for ACMI towers may be obtained from Mr. Wallace Williams, Minerals Management Service, (504) 736-2772.

(h) Archaeological Resources. Bidders are referred to the regulations at 30 CFR 250.26 (Archaeological Reports and Surveys). MMS Notice to Lessees (NTL) 91-02 (Outer Continental Shelf Archaeological Resources Requirements for the Gulf of Mexico OCS Region) published in the Federal Register on December 20, 1991 (56 FR 66076) effective February 17, 1992, specifies remote sensing instrumentation survey methodology, linespacing, and archaeological report writing requirements for lessees and operators in the Gulf of Mexico Region.

Three additional documents are available from the MMS Gulf of Mexico Region Public Information Unit (see paragraph 14(a)):

"List of Lease Blocks Within the High-Probability Area for Historic Period Shipwrecks on the OCS" dated January 30, 1995 (including an Errata Sheet dated January 15, 1997). This list supersedes the list promulgated by the MMS Letter to Lessees (LTL) of November 30, 1990.

"List of Lease Blocks Within the High-Probability Area for Prehistoric Archaeological Resources on the OCS" dated January 30, 1995.

MMS Gulf of Mexico Regional Office Letter to Lessees and Operators of March 17, 1996, which contains a list of lease blocks within the High-Probability Areas for both Historic Period Shipwrecks and Prehistoric Archaeological Resources on the OCS that were formerly "grandfathered" but which may now require archaeological surveys.

(i) Proposed Artificial Reefs/Rigs to Reefs. Bidders are advised that there are OCS artificial reef planning areas and reef sites for the Gulf of Mexico. These are generally located in water depths of less than 200 meters. While all artificial reef sites require a permit from the U.S. Army Corps of Engineers, the Artificial Reefs program is implemented through State sponsorship through the following State Coordinators:

Alabama Mr. Steve Heath, (334) 968-7576
Florida Mr. Jon Dodrill, (904) 922-4340
Louisiana Mr. Rick Kasprzak, (504) 765-2375
Mississippi Mr. Mike Buchanan, (601) 385-5860
Texas Ms. Jan Culbertson, (281) 474-1418

For more information, on artificial reef sites, prospective bidders should contact the above listed State Artificial Reef Coordinators for their areas of interest.

(j) Proposed Lightering Zones. Bidders are advised that the U.S. Coast Guard has designated certain areas of the Gulf of Mexico (60 FR 45006 of August 29, 1995), as lightering zones for the purpose of permitting single hull vessels to off-load oil within the U.S. Exclusive Economic Zone. Such designation may have implications for oil and gas operations in the areas. Additional information may be obtained from Lieutenant Commander Stephen Kantz, Project Manager, Oil Pollution Act (OPA 90) Staff, at (202) 267-6740.

(k) Statement Regarding Certain Geophysical Data. Pursuant to Sections 18 and 26 of the OCS Lands Act, as amended, and the regulations issued thereunder, MMS has a right of access to certain geophysical data and information obtained or developed as a result of operations on the OCS. MMS is sensitive to the concerns expressed by industry regarding the confidentiality of individual company work products and client lists and the potential burden of responding to a myriad of requests from MMS

pertaining to the existence and availability of these types of reprocessed geophysical data. To resolve the concerns of both industry and MMS with respect to such cases, MMS has worked with industry to develop the requirements contained within paragraph 3(b) Method of Bidding above. MMS modified the previous procedure to require that bidders who are in possession of the requested data, now identify the specific data by line name or 3D phase. This has helped MMS in identifying time data that may have already been in our data base and at the same time not imposed undue burden on industry by rerequesting it. MMS is currently considering further modifications to the above procedures that would aid in the identification of the data extent and at the same time hasten the procurement and reimbursement processes to bidders who furnish MMS with data. These changes will be available in April 1997 with the issuance of the Proposed Notice of Sale for Western Gulf Sale 168, scheduled for August 1997. All requirements are being imposed on a trial basis to determine their effectiveness and are subject to further modification in future sales.

The details of this requirement are specified in the document "Trial Procedures for Access to Certain Geophysical Data in the Gulf of Mexico" (revised January 19, 1996) which is available upon request from the MMS Gulf of Mexico Region Public Information Unit (see paragraph 14(a)). In brief, these requirements include:

(1) In the period for ninety (90) days after the sale, bidders will allow MMS to inspect such data within seven (7) days of a written request from MMS, and upon further written request will transmit to MMS, within ten (10) working days, such data. After this ninety day period, a response time of thirty (30) days following an MMS written request will be considered adequate.

(2) Successful bidders must retain such data for three (3) years after the sale, and unsuccessful bidders must retain such data for six (6) months after the sale, for possible acquisition by MMS.

For the six (6) month period after the sale, based on a review of the allowable cost of data reproduction to MMS for three-dimensional and two-dimensional data sets, the company providing the reprocessed data will be reimbursed at a rate of

\$480 per block or part thereof for three-dimensional data and \$2 per line mile for two-dimensional data. Afterwards, reimbursement will be subject to the terms and conditions of 30 CFR 251.13(a).

All geophysical data and information obtained and reviewed by MMS pursuant to these procedures shall be held in the strictest confidence and treated as proprietary in accordance with the applicable terms of 30 CFR 251.14.

For additional information, contact the MMS Gulf of Mexico Regional Office of Resource Evaluation at (504) 736-2720.

(l) Information about Indicated Hydrocarbons. Bidders are advised that MMS makes available, about 3 months prior to a lease sale, a list of unleased tracts having well bores with indicated hydrocarbons. Basic information relating to production, well bores, and pay range for each tract is included in the list. The list is available from the MMS Gulf of Mexico Region Public Information Unit (see paragraph 14(a)).

(m) Royalty Relief. The Outer Continental Shelf (OCS) Deep Water Royalty Relief Act authorizes the Secretary of the Interior to offer certain deepwater OCS tracts in the Central and Western Gulf of Mexico for lease with suspension of royalties for a volume, value, or period of production the Secretary determines. An interim rule was published in the Federal Register (61 FR 12022; March 25, 1996) that specifies the royalty suspension terms under which the Secretary will make tracts available for this sale. Bidders are advised to review that document for additional details on this matter. For further information, bidders may contact Mr. Walter Cruickshank of the MMS Offshore Minerals Analysis Division at (202) 208-3822.

A map titled "Royalty Suspension Areas for the Central Gulf of Mexico (March 1996)" depicting blocks in which such suspensions may apply is currently available from the MMS Gulf of Mexico Regional Office Public Information Unit (see paragraph 14(a) of this Notice).

The publication "OCS Operations Field Names Master List" depicts currently established fields in the Gulf of Mexico. This document is updated monthly and reprinted quarterly. Copies may

be obtained from the MMS Gulf of Mexico Regional Office Public Information Unit (see paragraph 14(a) of this Notice).

(n) Lease Instrument. Bidders are advised that the lease instrument will include royalty relief provisions (paragraph 4(c)(3) of this Notice) and 8-year lease cancellation provisions (paragraph 14(d) of this Notice) where applicable. Leases will continue to be issued on Form MMS-2005 (March 1986) as amended.

(o) Electronic Funds Transfer. Bidders are advised that the 4/5ths and first year rental EFT instructions for lease payoff have been revised and updated by MMS Royalty Management. Companies may now use either the Fedwire Deposit System or the Automated Clearing House (overnight payments). See paragraph 10(a) of this Notice.

(p) Deepwater Operations Plans. Bidders are advised that MMS Notice to Lessees (NTL) 96-4N, which became effective on August 19, 1996, requires that a Deepwater Operations Plan be submitted for all deepwater development projects (water depths greater than 304.8 meters (1,000 feet)) and for all projects utilizing subsea production technology; projects using conventional fixed-leg projects are exempted from this requirement. Copies of the NTL may be obtained from the MMS Gulf of Mexico Regional Office Public Information Unit (see paragraph 14(a) of this Notice).

s/Cynthia Quarterman
Director, Minerals Management Service

Approved:

s/Slyvia V. Baca
Deputy Assistant Secretary, Land and Minerals Management

1/24/97

Date

January 15, 1997

CENTRAL GULF OF MEXICO LEASED LANDS

(1) Descriptions of blocks listed represent all Federal acreage leased unless otherwise noted.

Sabine Pass	68	141	224	288
	(S1/2)	142	225	289
3	69	143	226	290
7	70	144	227	291
8	71	146	228	292
9	72	147	229	293
10	73	148	230	294
11	74	149	231	296
12	75	150	232	297
13	76	152	233	298
14	77	153	234	300
15	78	165	236	306
16	80	166	237	311
	81	167	238	312
West Cameron	90	168	239	313
	91	170	240	314
17	92	171	241	315
18	93	172	242	316
19	94	173	243	317
20	95	175	244	318
21	96	176	245	320
22	98	177	246	322
25	99	178	247	323
26	100	180	248	327
27	101	181	249	328
28	102	182	252	329
33	103	186	253	330
34	104	187	254	331
35	105	188	255	332
36	106	192	256	333
37	107	193	262	334
38	109	194	263	335
39	110	195	265	336
42	111	196	266	339
43	(SE1/4)	197	269	341
44	112	198	270	342
45	113	199	275	343
47	115	200	276	344
48	116	201	277	345
49	117	202	279	346
53	118	204	280	347
54	128	205	281	351
55	129	206	283	352
56	130	207	285	353
57	131	210		354
58	132	211	West Cameron,	355
59	(S1/2)	212	West Addition	356
60	133	215		357
61	134	216	154	358
65	135	217	162	359
66	137	220	163	361
67	138	221	164	362
	139	222	287	363

364	449	544	617	55
365	455	545	618	56
367	456	546	619	57
368	461	547	620	58
369	462	548	628	60
370	463	549	629	61
371	466	551	630	62
372	467	552	631	63
373	468	553	633	64
374	472	554	634	65
375	473	555	635	66
376	475	556	636	67
377	476	557	637	71
378	479	559	638	72
381	480	560	639	73
382	482	561	642	77
383	485	562	643	78
384	486	564	645	80
386	487	565	648	81
389	488	566	650	82
391	489	567	651	(W1/2)
393	490	569	652	83
395	491	570	654	84
396	492	572	656	85
398	493	573	657	87
399	494	574	660	88
401	495	575	661	89
402	497	576	662	90
403	498	577		94
405	499	578	East Cameron	95
406	500	579		101
407	502	580	2	102
408	503	581	9	104
409	504	583	11	106
413	505	586	14	107
414	507	587	16	108
416	509	588	17	109
417	513	589	20	110
418	514	590	22	113
420	515	591	23	114
421	516	592	24	115
423	518	593	25	116
424	519	594	26	117
425	520	596	31	118
426	521	597	32	119
427	522	599	33	120
428	526	600	35	121
430	527	601	37	122
431	528	602	38	123
432	531	603	39	126
438	532	605	40	127
440	533	606	41	129
441	534	607	42	131
443	535	609	43	132
	536	610	44	134
West Cameron	537	611	45	136
South Addition	538	612	46	137
	540	613	47	138
445	541	614	48	139
446	542	615	49	140
448	543	616	51	142

143				
148				
149				
151				
154				
157				
160				
161				
169				
170				
171				
173				
176				
178				
179				
182				
184				
185				
187				
188				
189				
191				
192				
193				
194				
195				
196				
197				
198				
199				
200				
201				
202				
203				
204				
(N1/2N1/2)				
205				
207				
211				
213				
214				
215				
216				
217				
220				
221				
222				
223				
224				
225				
226				
228				
229				
230				
231				
232				
233				
234				
	East Cameron, South Addition	324	26	95
		325	27	96
		326	28	97
	236	327	29	98
	237	328	30	100
	239	329	31	101
	240	330	34	102
	245	331	35	104
	246	332	36	107
	249	333	(E1/2NE1/4)	108
	250	334	37	109
	254	335	38	111
	257	336	39	112
	258	338	40	116
	259	341	42	118
	261	342	43	119
	262	343	44	120
	263	345	45	121
	264	346	46	123
	265	347	(N1/2)	124
	266	348	47	126
	267	349	48	127
	268	350	49	130
	270	351	50	131
	271	352	51	132
	272	353	52	133
	276	354	53	143
	278	355	54	144
	279	356	55	146
	280	357	57	147
	281	358	58	148
	282	359	59	152
	283	360	60	155
	286	361	61	156
	287	362	63	158
	288	364	64	159
	289	365	65	160
	292	366	66	161
	293	368	67	162
	297	369	68	163
	299	371	69	164
	302	373	71	165
	303	374	72	167
	305	375	73	169
	306	376	74	170
	308	377	75	171
	309	378	76	172
	310	379	78	175
	311	380	79	176
	312	381	80	178
	313		83	179
	314	Vermilion	84	180
	315		85	182
	316	17	86	185
	317	18	87	189
	318	19	88	190
	319	20	89	191
	320	21	90	193
	321	22	92	194
	322	23	93	196
	323	24	94	199

200	273	350	214	275
201	274	352	215	276
202	276	353	216	277
203	277	354	217	278
204	278	355	218	280
207	279	357	219	281
213	281	358	220	282
214	282	359	221	283
215	283	362	(Landward of	285
216	284	363	lease 0310 stip.	288
217	286	364	Line)	
218	287	366	222	South Marsh
(E1/2NW1/4	288	369	223	Island
SE1/4; NE1/4	289	370	224	
SW1/4SE1/4;	290	371	225	1
E1/2SE1/4)	291	372	226	2
219	292	374	227	6
221	294	375	228	7
223	295	376	229	8
224	296	377	230	9
225	297	378	231	10
226	298	379	232	11
227	299	380	233	12
228	301	381	234	13
229	302	384	235	15
232	305	385	236	16
233	306	386	237	17
237	307	389	238	18
238	308	391	239	19
239	309	392	240	22
241	311	393	241	23
242	312	394	(Landward of	24
245	313	395	lease 0310 stip.	26
246	314	397	Line)	27
247	315	398	242	28
248	316	399	(Landward of	29
249	317	400	lease 0310 stip.	33
250	318	401	Line)	34
251	319	402	243	35
	320	404	244	36
Vermilion,	321	405	245	37
South Addition	326	406	249	38
	328	407	250	39
252	329	408	252	40
255	330	409	253	41
256	331	410	254	44
257	332	411	255	48
258	333	412	256	49
259	335	413	258	50
260	336		259	51
261	337	South Marsh	260	57
262	338	Island,	261	58
263	339	North Addition	262	59
264	340		263	60
265	341	207	264	61
266	343	208	265	64
267	345	209	266	66
(S1/2)	346	210	268	67
268	347	211	269	69
271	348	212	272	70
272	349	213	274	

South Marsh Island, South Addition	150	45	129A	224
	155	46	133	225
	156	47	135	227
71	160	48	136	228
72	161	51	138	229
73	164	52	142	230
74	166	53	146	231
75	171	56	147	232
76	172	57	148	235
77	173	58	152	237
78	174	60	156	238
80	175	62	157	239
81	176	63	158	240
83	178	64	159	242
84	179	65	160	243
85	180	69	162	244
90	182	70	167	245
92	183	71	170	246
93	184	72	171	247
95	185	74	172	(S1/2)
96	186	75	173	248
97	187	76	174	250
98	188	77	175	251
99	189	78	176	252
102	190	79	177	253
103	191	80	178	254
106	192	82	179	255
107	193	84	181	256
108	194	85	182	257
109	196	86	184	258
111	197	87	187	259
112	202	88	188	260
113	203	89	189	261
114	204	90	190	262
115	205	93	191	263
116		(E1/2)	193	264
117	Eugene Island	94	195	265
121	10	95	196	266
123	18	99	197	
124	19	100	198	Eugene Island, South Addition
125	21	105	199	
127	22	107	202	
128	24	108	203	267
129	25	110	204	268
130	25	111	205	269
131	26	113A	206	270
132	27	116	208	271
133	28	(E1/2)	210	272
134	29	117	211	273
136	30	118	212	274
137	31	119	213	275
139	32	120	214	276
141	33	121	(W1/2W1/2)	277
142	34	123	E1/2; W1/2)	280
143	35	124	215	281
144	37	125	216	282
145	38	126	217	283
146	39	127	218	284
147	41	128	219	285
149	42	128A	221	286
	44	129	223	287

288	361	64	145	223
292	362	(W1/2)	147	224
293	364	65	148	225
294	365	66	149	226
295	366	67	150	227
296	367	68	151	228
297	370	69	154	229
298	371	71	155	230
301	372	(W1/2)	156	232
302	373	72	157	233
303	375	73	158	235
305	376	76	159	
306	377	77	160	Ship Shoal,
307	378	78	163	South Addition
308	380	79	164	
309	382	80	165	236
311	383	82	166	238
312	384	84	167	239
313	385	86	168	240
314	386	87	169	241
315	388	(N1/2)	170	242
316	389	90	171	243
317	390	91	172	244
320	391	92	173	246
322	392	93	174	247
323	393	94	175	248
324	394	96	177	249
325	395	98	178	251
326	396	99	179	252
327	397	100	181	253
328		101	182	258
329	Ship Shoal	102	183	259
330		104	184	261
331	11	105	185	262
332	13	107	186	263
333	(S1/2SE1/4)	108	188	265
334	14	109	189	266
336	(S1/2 S1/2)	110	190	267
337	15	111	191	268
338	25	112	192	269
339	26	113	193	270
340	(SE1/4)	114	194	271
341	27	115	196	272
342	28	116	198	273
343	29	117	199	274
344	30	118	201	275
345	31	119	202	276
346	32	120	204	277
347	33	124	206	278
348	34	126	207	279
349	35	127	208	280
350	38	128	209	282
351	53	129	210	283
352	54	130	213	287
353	55	133	214	288
354	57	134	215	289
355	58	135	216	290
356	59	136	218	291
358	62	139	219	292
359	63	143	220	293
360		144	222	294

295	25			
296	26	108		
299	27	109	199	266
300	28	110	200	270
301	29	111	203	271
303	30	112	204	272
304	32	123	205	273
308	34	125	206	274
309	35	126	207	275
312	36	128	208	276
313	37	129	209	277
314	38	130	210	278
315	39	131		279
316	40	133	South Timbalier,	280
317	41	134	South Addition	281
318	42	135		282
319	46	136	211	284
320	47	138	212	285
321	48	140	214	286
322	50	142	215	287
323	51	143	216	288
325	52	144	217	289
330	53	145	220	290
331	54	148	221	291
332	55	149	222	292
333	56	151	223	293
336	57	152	224	295
337	58	155	225	296
338	59	158	226	298
340	62	161	228	299
343	63	162	229	300
344	64	163	230	301
347	65	164	231	302
349	66	165	232	303
350	67	166	233	305
351	68	167	234	306
352	69	169	235	308
353	70	170	236	309
354	71	171	237	311
356	72	172	238	312
357	75	173	239	314
358	76	174	240	315
359	77	175	241	316
360	78	176	242	317
361	82	177	243	320
364	83	178	244	
365	84	179	245	South Pelto
366	85	181	246	
367	86	182	247	1
368	87	184	248	2
	88	185	250	5
	89	186	251	6
South Timbalier	90	188	252	8
11	91	(NW1/4)	253	9
16	92	189	254	10
17	95	190	255	11
20	99	192	256	12
21	100	193	259	13
22	102	194	260	15
23	106	195	261	16
24	107	197	262	17
		198	263	18
			265	

19	68	32	103	50
(W1/2)	70	34	104	51
20	72	(N1/2)	105	52
21	73	35	106	(Seaward of 8(g)
23	75	36	107	Line)
24	76	38	108	53
25	77	39	109	54
	78	40		55
Bay Marchand	79	41	West Delta,	56
	81	42	South Addition	57
2	82	43		(Swd. of 75
3	83	44	110	Decree Line to
4	84	45	111	1ft. swd. of 3rd
5	85	46	112	Supp. Decree;
		47	113	1 ft swd.
Grand Isle	Grand Isle, South	48	116	of 3rd Supp.
	Addition	50	117	Decree to
16		56	118	3 geog. miles
17	86	57	120	swd. of 1st
18	88	58	121	Supp. Decree)
19	90	59	122	58
20	91	60	127	59
21	93	61	128	60
22	94	62	132	61
23	95	63	133	
24	96	64	134	South Pass,
26	99	65	135	South & East
29	100	66	137	Addition
30	101	67	138	
(Por. landward	102	(S1/2)	139	62
of 3 marine	103	68	140	63
league line)	104	69	143	64
32	105	70	145	65
33	106	71	146	66
34	108	72	152	(Seaward of
35	110	73		65 Decree
36	115	74	South Pass	Line)
37	116	75		67
38	118	76	6	68
39	119	77	17	69
40		78	18	70
41	West Delta	79	19	71
42		80	27	72
43	16	85	28	73
44	17	86	29	74
45	18	87	31	75
46	19	88	32	77
47	20	89	33	78
48	21	90	34	79
49	(S1/2N1/2S1/2;	91	35	80
51	S1/2S1/2)	92	36	81
52	22	93	37	82
53	(E1/2)	94	38	83
54	23	95	42	86
55	24	96	43	87
58	26	97	44	88
59	27	98	45	89
62	28	99	46	92
63	29	100	47	93
65	30	101	48	94
67	31	102	49	96

Main Pass		Main Pass, South & East Addition		Breton Sound
	104		241	
	106		243	
6	(N1/2N1/2;		244	41
7	N1/2S1/2N1/2;	154	245	42
18	SE1/4SE1/4	158	246	43
19	NE1/4; E1/2	159	247	53
20	E1/2SE1/4)	160	248	54
29	107	161	249	55
30	(NE1/4NE1/4	162	250	56
37	NE1/4;S1/2	163	251	
38	NE1/4NE1/4;	164	252	Chandeleur
40	SE1/4NE1/4;	165	255	
41	SE1/4NW1/4	175	256	11
42	NE1/4;E1/2	177	257	14
43	SW1/4NE1/4;	180	258	15
(NE1/4;E1/2	E1/2SE1/4;E1/2	181	259	17
NW1/4;E1/2	W1/2SE1/4	184	260	18
W1/2NW1/4;	108	186	261	21
W1/2W1/2NW1/4;	109	187	262	22
NW1/4SW1/4;	110	188	263	25
W1/2NE1/4	111	189	264	27
SW1/4)	112	190	265	28
44	113	191	270	29
(SE1/4NE1/4;	114	192	271	32
NE1/4SE1/4)	115	195	273	33
57	116	196	274	34
58	118	198	275	
(N1/2)	119	199	277	Chandeleur, East Addition
59	120	200	278	
61	121	202	279	
62	122	203	280	36
64	123	206	281	37
65	124	207	282	38
68	125	209	283	40
69	127	210	284	41
70	(N1/2)	211	286	
71	129	212	288	Mobile
72	131	213	289	
73	132	214	290	778
74	133	215	291	779
77	138	216	293	819
78	139	217	295	820
88	140	221	296	821
89	141	222	297	822
90	142	223	298	823
91	144	224	299	824
(SW1/4 in Zone	145	225	300	827
2)	146	226	301	828
92	148	227	302	830
93	149	228	303	860
(Seaward of 8(g)	150	229	304	861
Line)	151	230	305	862
94	152	231	306	863
95	(Seaward of	232	307	864
96	65 Decree	233	309	865
98	Line)	234	310	866
99	153	235	311	867
100		236	312	868
101		237	313	869
102		239	315	870
103		240	316	871

872	71	340	869	783
873	72	341	870	785
874	73	345	871	786
902	74	346	898	787
904	75	384	899	788
905	76	385	900	789
907	77	388	901	790
908	80	389	908	791
911	109	390	909	826
(N1/2)	110	432	911	829
913	111	434	912	830
914	113	520	913	832
915	114	565	914	868
916	116	692	915	871
917	117	693	917	872
918	119	694	940	873
944	120	696	942	874
945	121	697	944	876
947	122	698	948	877
948	123	734	949	903
949	124	735	951	910
952	154	736	952	913
953	155	737	953	914
955	156	738	954	915
956	157	739	955	916
959	158	740	956	917
960	160	741	957	918
961	161	742	958	919
962	162	772	959	920
987	163	773	960	921
988	164	774	961	938
990	165	779	962	944
991	166	780	983	945
992	168	781	986	946
993	169	782	987	947
1002	201	783	989	948
1003	202	784	990	949
1004	203	785	992	953
1005	204	786	993	954
1006	206	816	994	958
	207	817	995	959
Viosca Knoll	208	818	996	961
	209	819	997	962
20	210	822	999	963
22	211	823	1000	964
23	213	824	1001	965
24	250	825	1002	967
25	251	826	1003	975
26	252	827	1004	976
27	253	828		977
28	254	829	Ewing Bank	978
31	256	830		979
32	294	856	305	986
33	295	858	306	987
35	296	861	438	988
36	297	862	481	989
37	298	863	525	990
38	300	864	526	991
68	301	865	744	993
69	338	867	746	999
70	339	868	782	1000

1001	125	293	432	556
1002	127	294	433	557
1003	128	295	434	558
1005	129	296	436	559
1006	147	297	437	560
1007	148	298	441	561
	149	299	443	562
Mississippi	150	300	444	563
Canyon	151	301	445	564
	161	302	447	565
20	162	303	461	566
21	163	305	462	567
22	164	311	469	568
23	166	312	470	569
24	167	320	471	573
25	168	321	472	575
26	169	322	474	576
27	170	323	475	579
28	171	324	476	582
29	172	325	478	583
30	173	335	479	584
32	191	336	480	585
33	192	337	481	587
34	193	338	485	588
35	194	340	486	589
36	195	341	487	595
37	196	342	489	596
38	203	343	490	597
39	204	344	495	600
40	205	345	496	601
41	209	346	499	605
63	210	347	502	606
64	211	348	503	607
66	212	353	505	608
67	213	354	506	609
68	214	355	507	610
69	215	356	508	618
72	216	357	509	619
73	217	358	514	620
74	235	362	515	621
75	236	365	516	624
76	240	378	517	627
78	246	380	518	628
79	247	381	519	630
80	248	383	520	631
81	249	384	521	632
82	251	385	522	635
84	253	388	524	636
85	254	392	525	637
108	255	397	530	639
109	256	398	538	640
112	257	399	539	642
113	258	400	543	643
117	259	401	544	644
118	267	424	545	645
119	268	425	546	648
120	278	427	550	649
121	280	428	552	652
122	281	429	553	653
123	291	430	554	654
124	292	431	555	657

664	761	859	984	82
666	762	864	985	83
667	763	868	986	89
668	764	875	987	90
669	765	876	988	91
671	766	884	989	92
672	768	885	992	95
673	769	886	993	97
674	770	888	994	98
675	771	889	996	99
676	772	890	999	104
677	773	891	1000	105
678	774	892	1001	108
679	775	893	1002	109
682	776	894	1003	110
683	777	895	1004	111
684	778	896		112
686	782	897	Green Canyon	113
687	795	898		114
688	796	899	4	115
691	797	900	5	116
692	798	903	6	117
693	799	908	9	119
694	802	911	10	120
695	803	912	16	121
696	804	925	17	125
697	806	928	18	126
698	807	931	19	129
709	808	932	20	133
710	809	933	21	134
711	810	934	23	135
713	811	935	25	136
714	818	936	28	137
715	819	937	29	141
716	820	938	30	142
717	821	939	31	143
718	822	940	32	148
720	826	941	36	149
721	828	942	37	151
724	829	943	38	152
725	831	944	39	153
726	832	945	45	154
727	837	948	48	155
728	839	955	50	156
730	840	956	51	157
731	841	957	52	158
732	842	958	53	159
734	843	959	58	160
736	844	969	60	161
737	845	970	64	165
738	846	971	65	166
739	847	972	68	169
741	848	975	69	170
751	849	976	72	171
752	850	977	73	172
754	851	978	74	173
755	852	979	75	177
756	853	980	77	179
757	854	981	79	180
758	855	982	80	181
760	856	983	81	182

183	300	446	550	658
184	301	447	551	673
192	302	448	552	674
193	303	452	553	677
195	304	453	554	679
198	305	455	556	680
199	317	457	557	681
200	318	458	558	684
201	323	459	559	685
202	325	460	561	686
203	326	461	562	689
204	327	462	563	690
205	328	463	564	691
208	331	465	565	692
210	333	466	566	693
214	334	467	578	698
215	335	468	579	699
216	338	469	580	700
217	339	470	584	701
223	340	472	585	706
224	341	473	587	707
225	348	474	588	712
234	349	475	589	713
236	353	481	590	714
237	354	486	593	720
238	355	487	594	721
239	356	490	595	723
240	365	491	596	724
241	368	492	597	725
242	369	496	598	726
243	372	497	599	727
244	373	499	600	728
245	375	500	601	729
246	377	504	602	735
247	378	505	603	736
248	379	506	604	737
249	384	507	605	738
250	385	508	606	739
251	399	509	607	740
252	400	510	609	741
253	402	512	610	742
254	403	513	622	743
255	404	514	623	744
256	405	515	624	750
257	406	516	625	751
260	409	517	629	756
261	410	518	630	757
268	411	519	631	758
269	412	520	632	764
277	415	531	636	765
278	416	533	641	766
279	417	534	642	767
282	419	535	643	771
283	421	540	644	773
284	422	541	645	775
287	423	543	646	776
294	426	544	647	781
295	427	545	648	782
297	429	546	649	783
298	431	548	650	800
299	437	549	657	801

802	956	92	209	407
803	957	93	210	408
806	958	97	211	409
807	959	98	214	410
808	969	99	217	411
809	970	100	221	412
810	996	101	223	413
816	998	103	224	414
817	999	104	225	422
818	1000	105	226	425
819	1001	106	231	428
820	1002	107	232	429
821		108	233	432
822	Atwater Valley	112	234	433
823		113	236	441
824	3	114	237	442
825	7	115	248	444
826	8	116	249	445
827	11	117	251	446
828	12	118	252	452
829	13	119	258	453
844	15	122	261	454
845	16	123	265	455
846	17	127	268	456
847	18	133	270	457
850	19	135	271	458
851	20	136	272	472
852	21	137	276	473
853	22	140	277	489
854	23	141	284	490
859	24	142	288	491
860	25	143	302	500
861	26	145	312	501
863	28	146	313	531
864	29	150	321	532
865	33	151	323	534
866	51	152	324	573
867	52	153	327	574
868	55	157	332	575
869	56	158	333	576
870	57	160	334	617
871	58	161	337	618
872	59	162	338	
873	60	163	345	
889	61	165	346	
890	62	167	362	
891	63	177	363	
896	64	180	367	
897	66	181	368	
898	67	182	377	
905	68	185	378	
911	70	187	379	
912	71	188	380	
913	72	189	381	
914	73	190	388	
915	79	192	389	
916	80	193	398	
941	84	194	399	
942	89	204	400	
954	90	205	401	
955	91	206	406	

Walker Ridge	425
	426
1	450
2	453
4	454
5	455
6	456
7	457
26	458
27	468
28	469
29	470
32	500
46	501
48	508
49	541
50	544
51	553
70	585
71	594
72	595
92	678
93	680
94	714
95	715
120	723
121	724
137	725
138	754
139	755
164	758
181	759
182	766
189	767
190	768
196	798
197	799
198	808
205	809
206	811
233	
239	
240	
249	
250	
285	
286	
329	
330	
362	
363	
373	
374	
381	
382	
406	
407	
408	
409	
410	
413	



Leasing Activities Information



U.S. Department of the Interior
Minerals Management Service
Gulf of Mexico OCS Region

CENTRAL GULF OF MEXICO LEASE SALE 166 - FINAL MARCH 5, 1997

UNLEASED SPLIT BLOCKS

AND

UNLEASED ACREAGE OF BLOCKS

WITH ALIQUOTS AND IRREGULAR

PORTIONS UNDER LEASE

For Oil and Gas Leases in the Gulf of Mexico



INSTRUCTIONS TO BIDDERS

This package identifies the unleased Federal acreage along the offshore Louisiana, Mississippi, and Alabama/Federal boundary (split blocks) and unleased acreage of blocks with portions under lease. If a block is bid upon, all unleased acreage within that block must be bid upon.

Method of bidding - As described in paragraph 3 of the final Notice of Lease Sale 166.

Lists of available split blocks and blocks with portions under lease appear on pages 2 of 8 and 7 of 8.

Individual block diagrams are arranged in numerical sequence.

Split and irregular blocks leased as a result of the sale will be legally described by using X and Y coordinates. Any specific questions pertaining to the unleased split blocks or those with portions under lease should be referred to Mr. Wallace Williams (504) 736-2772.

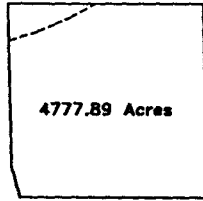
**SPLIT BLOCKS LIST BY MAP AREA AND BLOCK NUMBER SEQUENCE
FOR SALE 166**

Sabine Pass	Ship Shoal	South Pass	Chandeleur
5	2	39	1
6	8	57	3
	9		5
West Cameron	10	South Pass	8
	13	South & East	16
23	14	Addition	
24	16		Mobile
29	24	66	
30	26		765
31	49	Main Pass	766
	64		767
East Cameron		17	809
	South Timbalier	44	811
3		55	812
8	9	56	813
10	10	91	814
15	18		815
21	19	Breton Sound	816
			817
Vermilion	South Pelto	24	818
		25	853
11	3	39	897
12		40	898
15	Grand Isle	44	942
16			943
	15		
Eugene Island	25		
9	West Delta		
11			
12	21		
12-A	22		
20	25		
23	37		
	81		

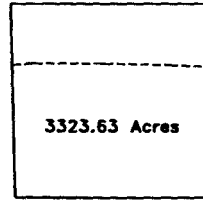
Note: Diagrams are in numerical order.



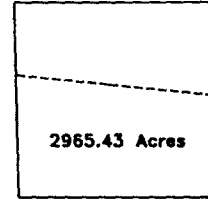
Sabine Pass Block 5



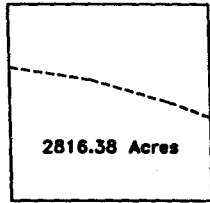
Sabine Pass Block 6



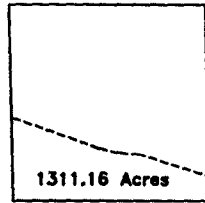
West Cameron Block 23



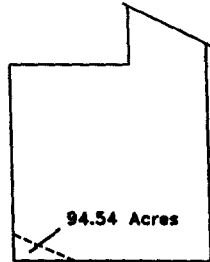
West Cameron Block 24



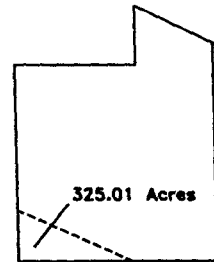
West Cameron Block 29



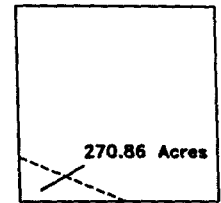
West Cameron Block 30



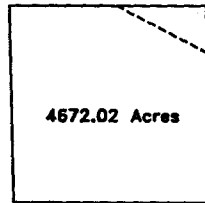
West Cameron Block 31



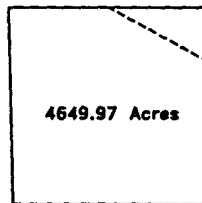
East Cameron Block 3



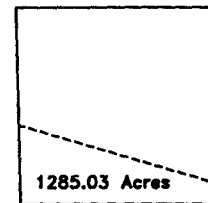
East Cameron Block 8



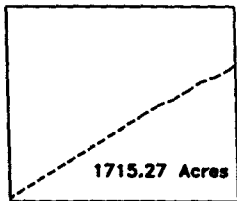
East Cameron Block 10



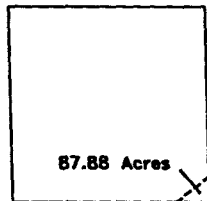
East Cameron Block 15



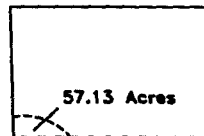
East Cameron Block 21



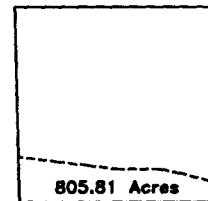
Vermillion Block 11



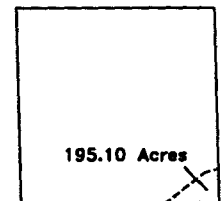
Vermillion Block 12



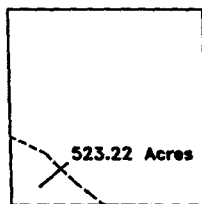
Vermillion Block 15



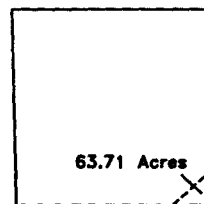
Vermillion Block 16



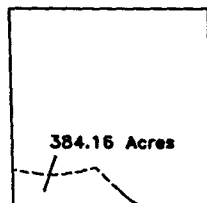
Eugene Island Block 9



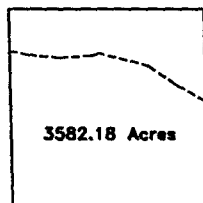
Eugene Island Block 11



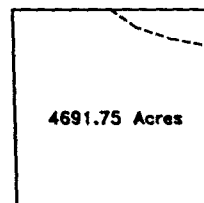
Eugene Island Block 12



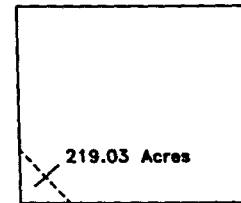
Eugene Island Block 12-A



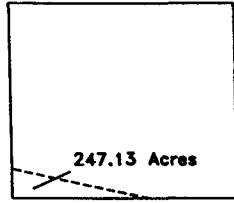
Eugene Island Block 20



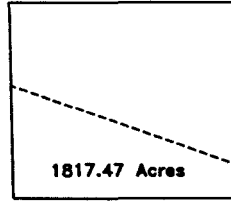
Eugene Island Block 23



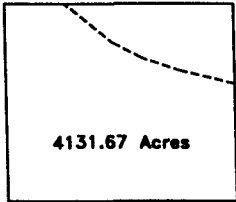
Ship Shoal Block 2



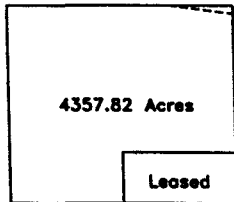
Ship Shoal Block 8



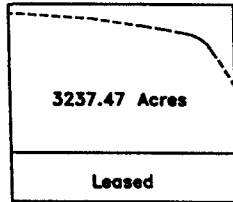
Ship Shoal Block 9



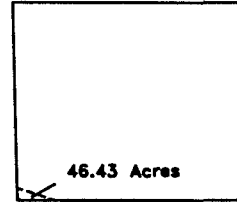
Ship shoal Block 10



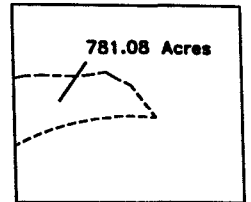
Ship Shoal Block 13



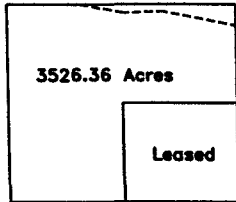
Ship Shoal Block 14



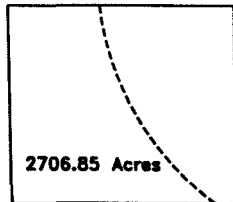
Ship Shoal Block 16



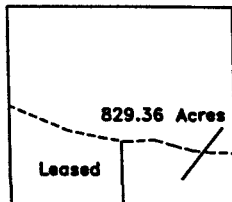
Ship Shoal Block 24



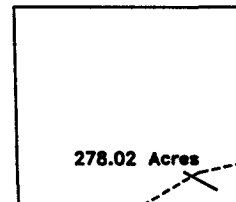
Ship Shoal Block 26



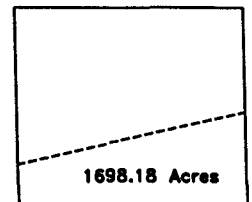
Ship Shoal Block 49



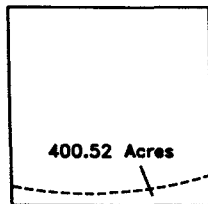
Ship Shoal Block 64



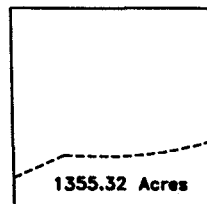
South Timbalier Block 9



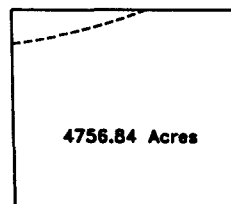
South Timbalier Block 10



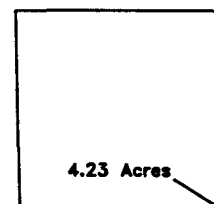
South Timbalier Block 18



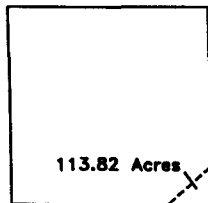
South Timbalier Block 19



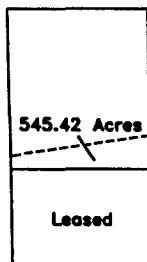
South Pelto Block 3



Grand Isle Block 15



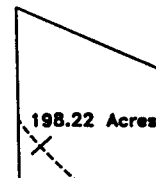
Grand Isle Block 25



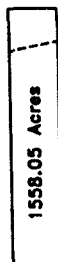
West Delta Block 21



West Delta Block 22



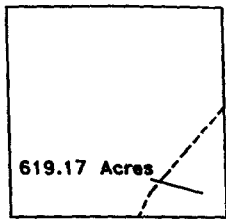
West Delta Block 25



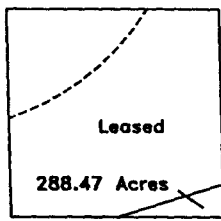
West Delta Block 37



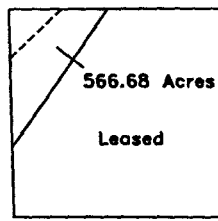
West Delta Block 81



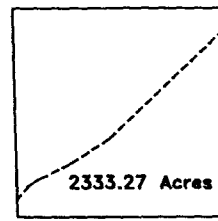
South Pass Block 39



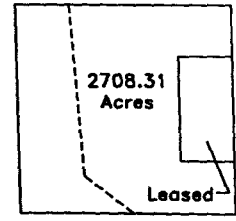
South Pass Block 57



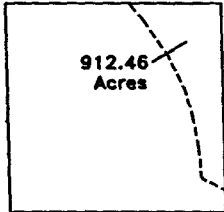
South Pass S.&E. Block 66



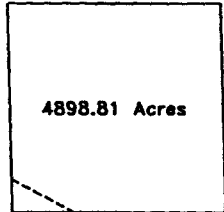
Main Pass Block 17



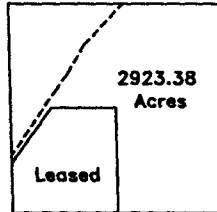
Main Pass Block 44



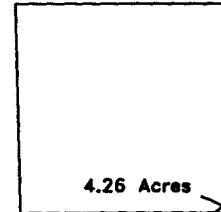
Main Pass Block 55



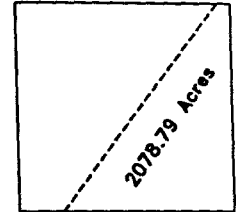
Main Pass Block 56



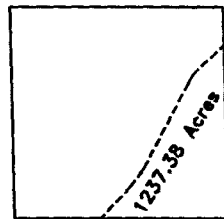
Main Pass Block 91



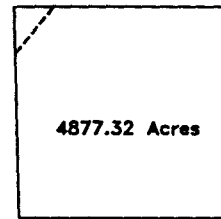
Breton Sound Block 24



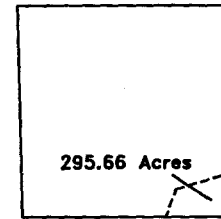
Breton Sound Block 25



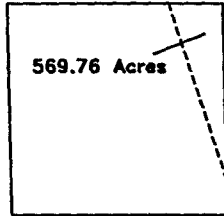
Breton Sound Block 39



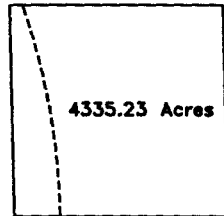
Breton Sound Block 40



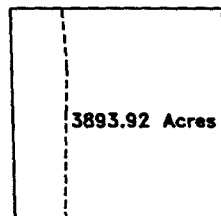
Breton Sound Block 44



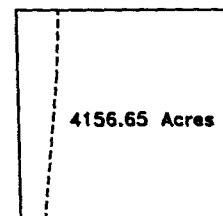
Chandeleur Block 1



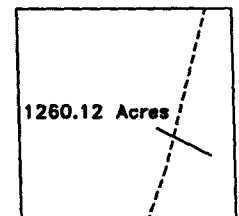
Chandeleur Block 3



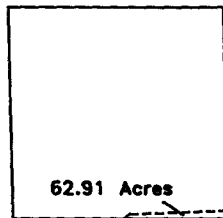
Chandeleur Block 5



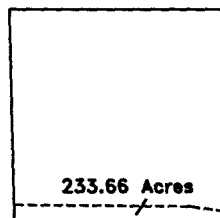
Chandeleur Block 8



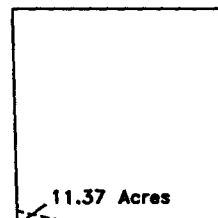
Chandeleur Block 16



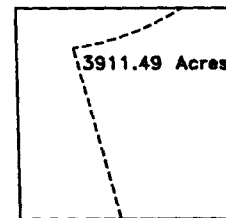
Mobile Block 765



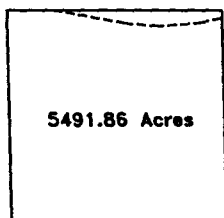
Mobile Block 766



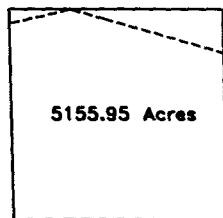
Mobile Block 767



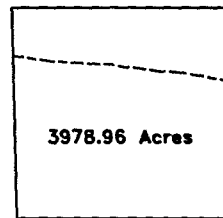
Mobile Block 809



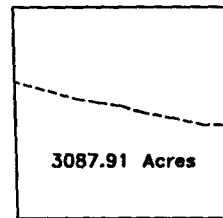
Mobile Block 811



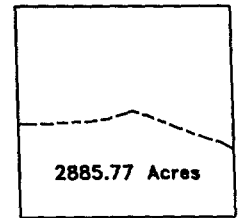
Mobile Block 812



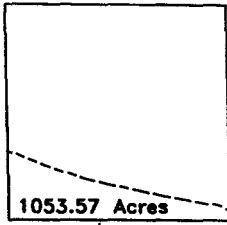
Mobile Block 813



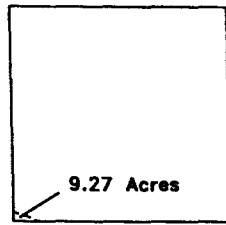
Mobile Block 814



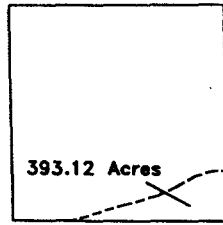
Mobile Block 815



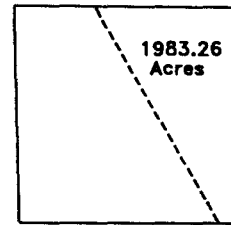
Mobile Block 816



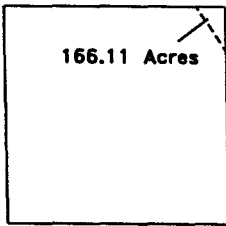
Mobile Block 817



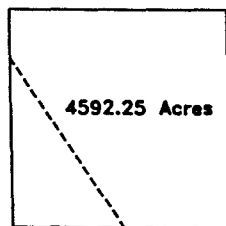
Mobile Block 818



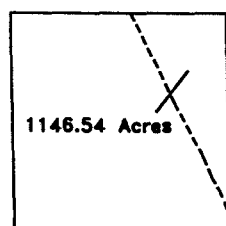
Mobile Block 853



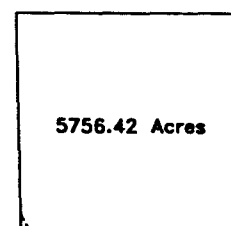
Mobile Block 897



Mobile Block 898



Mobile Block 942

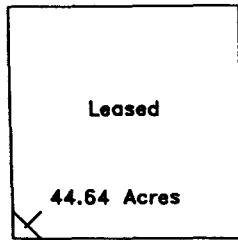


Mobile Block 943

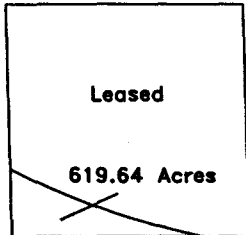
**UNLEASED ACREAGE OF BLOCKS WITH ALIQUOTS
AND IRREGULAR PORTIONS UNDER LEASE**

West Cameron	Ship Shoal	South Pass
68 (2500.00 Ac.)	* 13 (4357.82 Ac.)	* 52 (533.24 Ac.)
111 (3750.00 Ac.)	* 14 (3237.47 Ac.)	* 57 (288.47 Ac.)
132 (2500.00 Ac.)	* 26 (3526.36 Ac.)	
	* 64 (829.36 Ac.)	South Pass
East Cameron	71 (2500.00 Ac.)	South & East
82 (2500.00 Ac.)	87 (2500.00 Ac.)	Addition
204 (3750.00 Ac.)	South Timbalier	* 66 (566.68 Ac.)
Vermilion	188 (3750.00 Ac.)	Main Pass
36 (4375.00 Ac.)	South Pelto	43 (2029.03 Ac.)
46 (2500.00 Ac.)		* 44 (2708.31 Ac.)
218 (4140.625 Ac.)	19 (2500.00 Ac.)	58 (2497.275 Ac.)
	Grand Isle	* 91 (2923.38 Ac.)
Vermilion		* 93 (466.39 Ac.)
South Addition		106 (2731.39 Ac.)
267 (2500.00 Ac.)	* 30 (4234.00 Ac.)	107 (3277.673 Ac.)
	West Delta	127 (2497.275 Ac.)
South Marsh Island		*152 (22.47 Ac.)
North Addition	* 21 (545.42 Ac.)	Mobile
*221 (44.64 Ac.)	* 22 (1334.99 Ac.)	911 (2880.00 Ac.)
*241 (619.64 Ac.)	34 (2500.00 Ac.)	
*242 (3068.22 Ac.)	67 (2500.00 Ac.)	
Eugene Island		
93 (2500.00 Ac.)		
116 (2500.00 Ac.)		
214 (1875.00 Ac.)		
247 (2500.00 Ac.)		

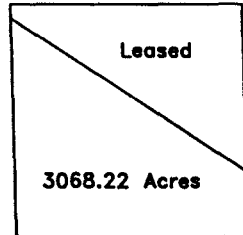
* Blocks with irregular portions under lease (See page 8).



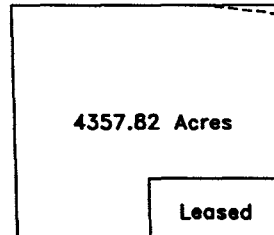
South Marsh Island N.A.
Block 221



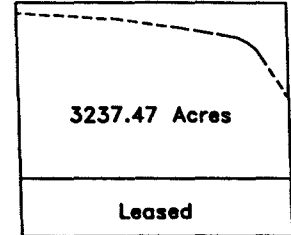
South Marsh Island N.A.
Block 241



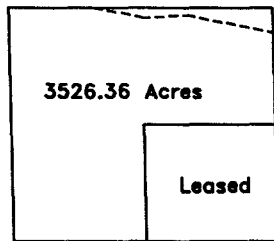
South Marsh Island N.A.
Block 242



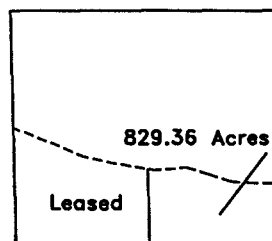
Ship Shoal Block 13



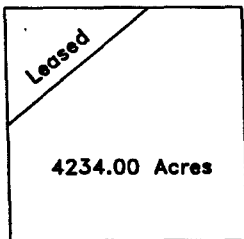
Ship Shoal Block 14



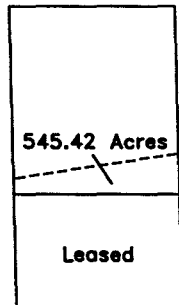
Ship Shoal Block 26



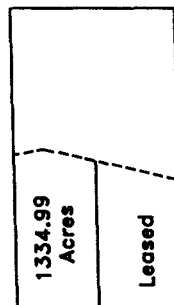
Ship Shoal Block 64



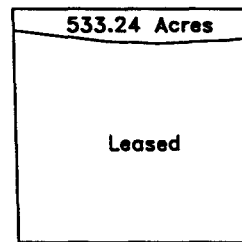
Grand Isle Block 30



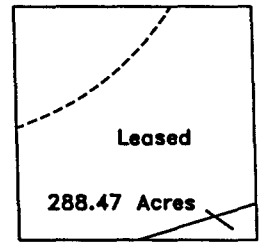
West Delta Block 21



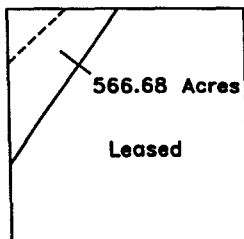
West Delta Block 22



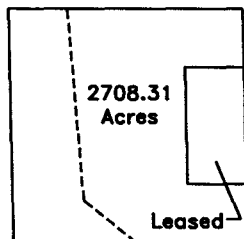
South Pass Block 52



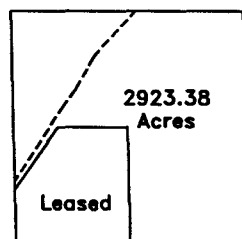
South Pass Block 57



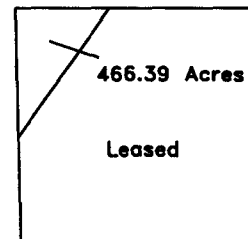
South Pass S&E Block 66



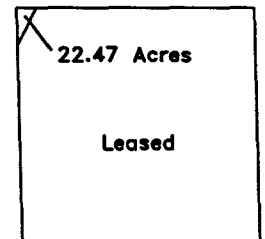
Main Pass Block 44



Main Pass Block 91



Main Pass Block 93



Main Pass Block 152

**U.S. Department of the Interior
Minerals Management Service
Gulf of Mexico OCS Region**

**Certifications Regarding Debarment, Suspension, and
Other Responsibility Matters**

Persons signing this form should refer to the regulations referenced below for complete instructions:

Certification Regarding Debarment, Suspension, Ineligibility and Voluntary Exclusion - Lower Tier Covered Transactions - (See Appendix B of Subpart D of 43 CFR Part 12.)

Certification Regarding Debarment, Suspension, and Other Responsibility Matters - Primary Covered Transactions - The prospective primary participant further agrees by submitting this proposal that it will include the clause titled, "Certification Regarding Debarment, Suspension, Ineligibility and Voluntary Exclusion - Lower Tier Covered Transaction," provided by the department or agency entering into this covered transaction, without modification, in all lower tier covered transactions and in all solicitations for lower tier covered transactions. See below for language to be used; use this form for certification and sign; or use Department of the Interior Form 1954 (DI-1954). (See Appendix A of Subpart D of 43 CFR Part 12.)

60 FR 9786 (February 22, 1995) allows the use of "...any forms or formats, including electronic equivalents..." in making these required certifications, "...as long as the certification or statement contains the applicable language required by the regulation."

Signature on this form provides for compliance with certification requirements under 43 CFR Parts 12 and 18. The certifications shall be treated as a material representation of fact upon which reliance will be placed when the Department of the Interior determines to award the covered transaction, grant, cooperative agreement, or loan.

PART A: Certification Regarding Debarment, Suspension, and Other Responsibility Matters - Primary Covered Transactions
(applicable to all MMS transactions requiring certification under the regulations cited above, including lease issuance)

CHECK ___ IF THIS CERTIFICATION IS FOR A PRIMARY COVERED TRANSACTION AND IS APPLICABLE.

- (1) The prospective primary participant certifies to the best of its knowledge and belief, that it and its principals:
 - (a) Are not presently debarred, suspended, proposed for debarment, declared ineligible, or voluntarily excluded from covered transactions by any Federal department or agency;
 - (b) Have not within a three-year period preceding this proposal been convicted of or had a civil judgment rendered against them for commission of fraud or a criminal offense in connection with obtaining, attempting to obtain, or performing a public (Federal, State or local) transaction or contract under a public transaction; violation of Federal or State antitrust statutes or commission of embezzlement, theft, forgery, bribery, falsification or destruction of records, making false statements, or receiving stolen property;
 - (c) Are not presently indicted for or otherwise criminally or civilly charged by a governmental entity (Federal, State or local) with commission of any of the offenses enumerated in paragraph (1)(b) of this certification; and
 - (d) Have not within a three-year period preceding this application/proposal had one or more public transactions (Federal, State or local) terminated for cause or default.
- (2) Where the prospective primary participant is unable to certify to any of the statements in this certification, such prospective participant shall attach an explanation to this proposal.

PART B: Certification Regarding Debarment, Suspension, Ineligibility, and Voluntary Exclusion - Lower Tier Covered Transactions
(not applicable to MMS lease issuance; applies to other MMS transactions requiring certification under the regulations cited above, as directed)

CHECK ___ IF THIS CERTIFICATION IS FOR A LOWER TIER COVERED TRANSACTION AND IS APPLICABLE.

- (1) The prospective lower tier participant certifies, by submission of this proposal, that neither it nor its principals is presently debarred, suspended, proposed for debarment, declared ineligible, or voluntarily excluded from participation in this transaction by any Federal department or agency.
- (2) Where the prospective lower tier participant is unable to certify to any of the statements in this certification, such prospective participant shall attach an explanation to this proposal.

As the authorized certifying official, I hereby certify that the above specified certifications are true.

SIGNATURE OF AUTHORIZED CERTIFYING OFFICIAL _____

TYPED NAME AND TITLE OF CERTIFYING OFFICIAL _____

TYPED COMPANY NAME AND GOM COMPANY NUMBER _____

DATE: _____



SAMPLE:

Preferred Bid Form

Regional Director
Minerals Management Service, USDI
Gulf of Mexico OCS Region
1201 Elmwood Park Boulevard
New Orleans, Louisiana 70123-2394

Oil and Gas Lease Sale _____
Date of Sale: _____
Company Submitting Bid: _____
GOM Company Number: _____

Oil and Gas Lease Bid

The following bid is submitted for an oil and gas lease on the area and block of the Outer Continental Shelf specified below:

<u>Area Name</u>	<u>Area Number</u>	<u>Block</u>	<u>Total Amount Bid</u>	<u>Amount of Cash Bonus Submitted with Bid</u>
West Cameron West Addition	LA1A	404	\$6,157,623	\$1,231,524.60

<u>GOM Company No.</u>	<u>Percent Interest</u>	<u>Company Name(s) and Signature(s)</u>
20999	33.33	Explorer LTD Box 1234567 Dime Box, Texas 12345 By: _____ I. W. In Vice President
21115	33.33	O&G Trans Box 54321 North Zulch, Texas 12345 By: _____ M. E. Too, II Attorney-in-Fact
20137	33.34	Ideas Galor 5 Swamp Boulevard New Orleans, Louisiana 12345 By: _____ I. Al So President
TOTAL:	100.00	

NOTES:

1. Company name as on file with MMS, GOM Company Number, company address, area name and number, and block number must appear on all bids. Company address is where official correspondence will be sent.
2. Staple check to the bid form.
3. Use large boldface type-style, such as Times Roman Bold - 12 pt.
4. Total Amount Bid must be in whole dollar figure.
5. Amount Per Acre is not required. MMS will calculate the per acre amount for all official reports based on official protraction diagram or leasing map acreage.
6. Amount of Cash Bonus Submitted with Bid must not be less than 20% of Total Amount Bid.
7. Proportional interest of joint bids must not exceed 5 decimal places; total must always equal 100%. There is no limit to the number of joint bidders that may participate.
8. Type Signer's name under signature; each joint bidder must sign.

SAMPLE:

Preferred Bid Envelope

Ideas Galor - GOM Company Number 20137

West Cameron Area, West Addition, (Area Number LA1A)

Block 404

SEALED BID FOR OIL AND GAS LEASE SALE _____
NOT TO BE OPENED UNTIL 9:00 A.M. C.S.T., _____, 199_____

1. Use standard size envelopes not to exceed 4-1/2" x 10-1/2" when submitting bids.
2. Use large boldface type, such as Times Roman Bold - 12 pt.

United States Department of the Interior

Minerals Management Service
Gulf of Mexico OCS Region
Adjudication Unit (MS 5421)
1201 Elmwood Park Boulevard
New Orleans, Louisiana 70123-2394

The following information is provided relative to bids submitted for OCS Lease Sale Number _____ by

Company Name: _____

Signature: _____

Title: _____

Area Code - Phone Number: _____

GOM Company Number: _____

Date: _____

I. Payments and Refunds.

All payoff payments to and refunds from the Minerals Management Service will be made via Electronic Funds Transfer (EFT). The individual authorized to act as your company's EFT coordinator is:

(Name)

(Company)

(Area Code - Phone Number)

(Area Code - FAX Number)

II. Deliver to: (FED EX requires Street Address and Zip Code)

(Company)

(Street)

(City) (State) (Zip)

(Attention)

(Area Code - Phone Number)

III. Notification of Bid Acceptance will only be made by FAX Message.

FAX Number: _____

IV. Return of Unsuccessful Checks.

The bid deposit check or checks for unsuccessful bids will be returned to only one company within a bidding combine. Indicate preferred method of delivery:

Pick up - at the sale site.

(Individual Authorized to Pick Up Checks)

(Company)

(Area Code - Phone Number)

Mail to: (FED EX requires Street Address and Zip Code)

(Company)

(Street)

(City) (State) (Zip)

(Attention)

(Area Code - Phone Number)

V. Return of Deposit for Rejected Bids.

All refunds for rejected bids will be returned to only one company within a bidding combine. All refunds will be via EFT.

(Name of Receiving Financial Organization)

(City and State of Receiving Financial Organization)

(Nine-digit American Bankers Association Routing Number)

(Recipient Account Number at Receiving Financial Organization)

(Recipient Name in which Account is Maintained)

****RETURN AT TIME OF BID SUBMISSION - DO NOT ENCLOSE IN ENVELOPE****

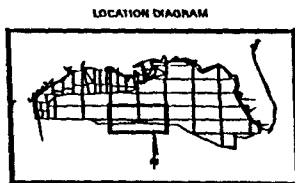
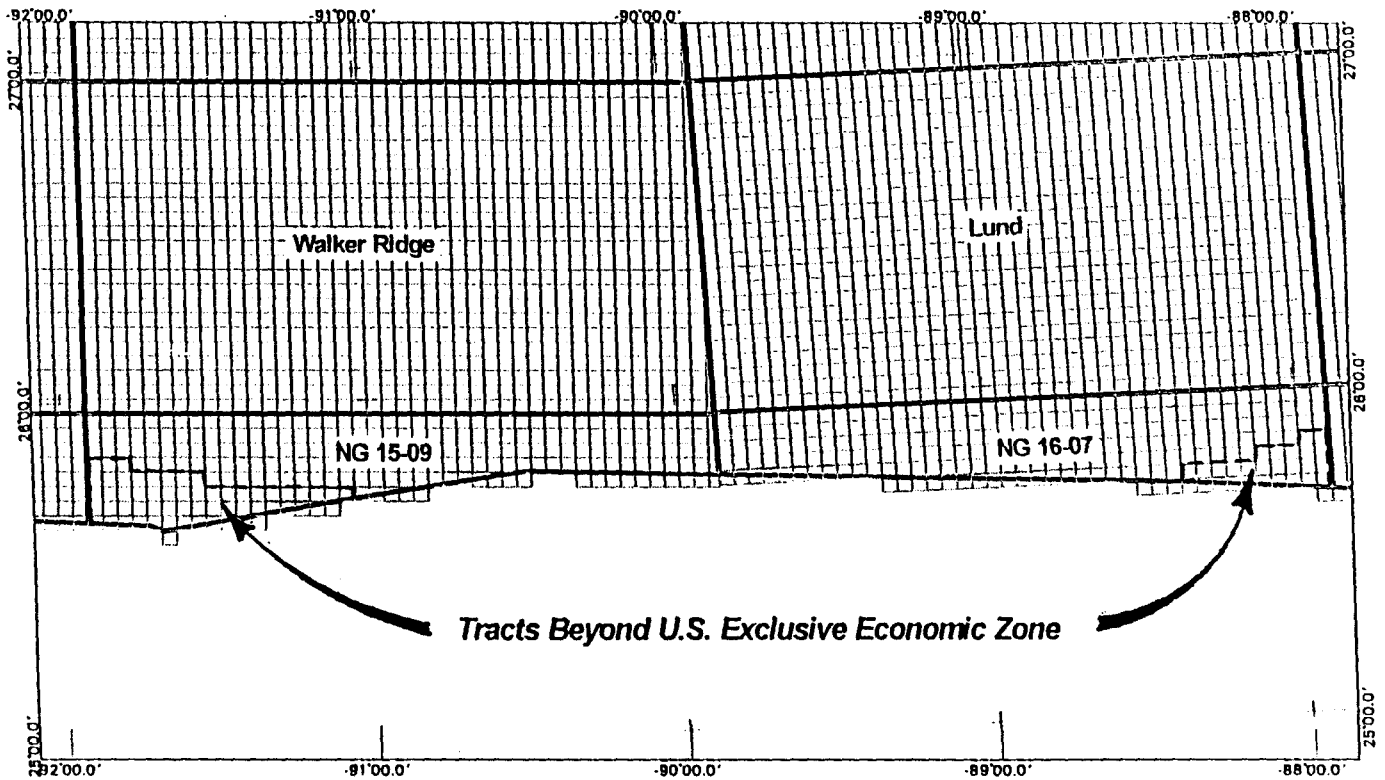


Leasing Activities Information

MMS U.S. Department of the Interior
Minerals Management Service
Gulf of Mexico OCS Region

October 1996

Tracts Beyond U.S. Exclusive Economic Zone Map Central Gulf of Mexico (possibly subject to future treaty agreement with Mexico)



Tracts Beyond U.S. Exclusive Economic Zone Central Gulf of Mexico

(possibly subject to future treaty agreement with Mexico)

The area defined herein is that area lying Northerly of the Provisional U.S. - Mexico Maritime Boundary and seaward of a line at 200 nautical miles from the coastline in the Central Gulf of Mexico.

OFFICIAL PROTRACTION DIAGRAM

NG15-09

Blocks

133 through 135

177 through 184

221 through 238

265 through 281

309 through 320

358

NG16-07

Blocks

172, 173

213 through 217

252 through 261

296 through 305

349