

---

---

**MMS**

U.S. Department of the Interior  
Minerals Management Service  
Gulf of Mexico OCS Region

# Leasing Activities Information

---

---

**CENTRAL GULF OF MEXICO  
LEASE SALE 185  
March 19, 2003**

**UNLEASED SPLIT BLOCKS  
and  
AVAILABLE UNLEASED ACREAGE OF BLOCKS WITH  
ALIQUOTS AND IRREGULAR PORTIONS  
UNDER LEASE OR DEFERRED**

**For Oil and Gas Leases in the Gulf of Mexico**

**—MMS—**



**UNLEASED SPLIT BLOCKS  
and  
AVAILABLE UNLEASED ACREAGE OF BLOCKS  
WITH  
ALIQUOTS AND IRREGULAR PORTIONS  
UNDER LEASE OR DEFERRED**

**INSTRUCTION TO BIDDERS**

This package identifies the unleased Federal acreage along the offshore Louisiana, Mississippi, and Alabama Federal boundary and available unleased acreages of blocks with portions under lease or deferred. If a block is bid upon, all available unleased acreage within that block must be bid upon.

Method of bidding – As described in the final Notice of Lease Sale 185.

Split and irregular blocks leased as a result of the sale will be legally described by using X and Y coordinates. Any specific questions pertaining to the unleased split blocks, or those with portions under lease, should be referred to Charles Hill (504) 736-2795.

<u>MAP NUMBER/ MAP AREA</u>	<u>BLOCK</u>
LA1	22
West Cameron	23
	24
	25
	26
	27
	29
	30
	31
	68
	132
LA2	3
East Cameron	8
	10
	14
	15
	20
	22
	37
	195
	204
LA3	11
Vermilion	12
	15
	18
	19
	20
	27
	29
	46
	179
	217
	218
	226
LA3D	221
South Marsh	230
Island North	241
LA4	9
Eugene Island	11
	12
	12A
	18
	20
	21
	25
	35
	37
	38
	64
	93
	116

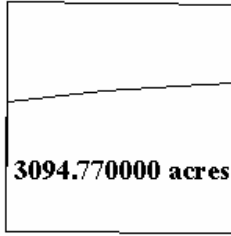
<u>MAP NUMBER/ MAP AREA</u>	<u>BLOCK</u>
LA4A	315
Eugene	
Island South	
LA5	2
Ship Shoal	8
	9
	10
	13
	14
	16
	24
	25
	49
	71
	87
	120
LA6	9
South	10
Timbalier	22
	27
	28
	86
LA6B	19
South Pelto	
LA6C	5
Bay Marchand	
LA7	15
Grand Isle	24
	25
	29
LA8	16
West Delta	18
	19
	20
	21
	22
	25
	34
	37
	56
	67
	68
	81
LA8A	111
West Delta	
South	

<u>MAP NUMBER/ MAP AREA</u>	<u>BLOCK</u>
LA9	17
South Pass	29
	35
	37
	39
	52
	57
LA9A	66
South Pass S&E	
LA10	6
Main Pass	17
	55
	56
	57
	58
	127
	152
LA10B	24
Breton Sound	39
	42
	43
	44
LA11	1
Chandeleur	3
	5
	8
	15
	16
LA12	5
Sabine Pass	
NG15-09	162
Amery Terrace	163
	164
	165
	166
	199
	200
	201
	202
	203
	204
	205
	206
	210
	211
	212
	213
	214
	215
	216
	217
	218

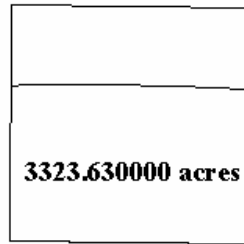
<u>MAP NUMBER/ MAP AREA</u>	<u>BLOCK</u>
NG15-09	219
Amery Terrace	235
(continued)	236
	237
	238
	239
	240
	241
	242
	243
	273
	274
	275
	276
	277
	278
	279
	309
	310
	311
	312
	313
	314
	315
	316
	317
NG16-07	177
Lund South	178
	179
	180
	181
	182
	183
	184
	185
	186
	187
	188
	232
	233
	234
	235
	236
	237
	238
	239
	240
	241
	242
	243
	244
	245
	246
	247
	248
	249

<u>MAP NUMBER/ MAP AREA</u>	<u>BLOCK</u>
NG16-07	293
Lund South	294
(continued)	295
NH16-04	814
Mobile	815
	816
	817
	818
	829
	853
	897
	898
	942
	943
	987
NH16-10	128
Mississippi Canyon	

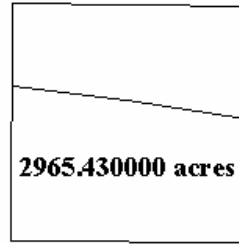
**West Cameron Area  
LA1 - Block 22**



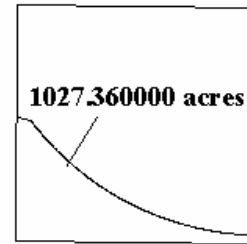
**West Cameron Area  
LA1 - Block 23**



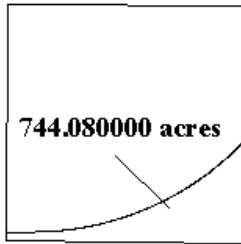
**West Cameron Area  
LA1 - Block 24**



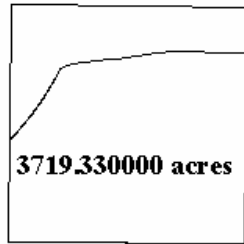
**West Cameron Area  
LA1 - Block 25**



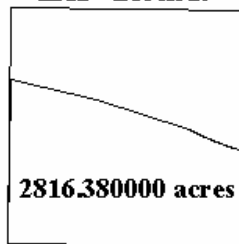
**West Cameron Area  
LA1 - Block 26**



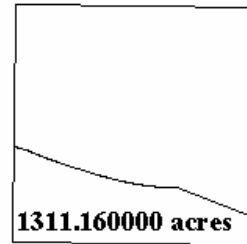
**West Cameron Area  
LA1 - Block 27**



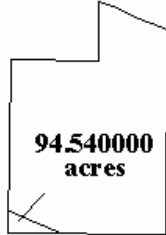
**West Cameron Area  
LA1 - Block 29**



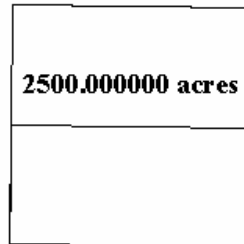
**West Cameron Area  
LA1 - Block 30**



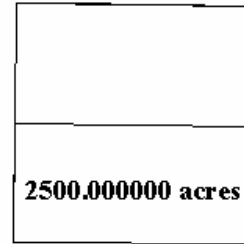
**West Cameron Area  
LA1 - Block 31**



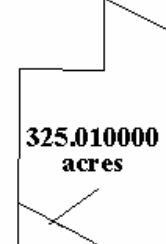
**West Cameron Area  
LA1 - Block 68**



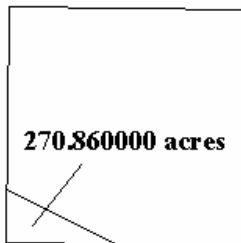
**West Cameron Area  
LA1 - Block 132**



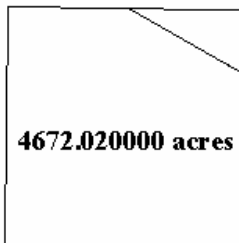
**East Cameron Area  
LA2 - Block 3**



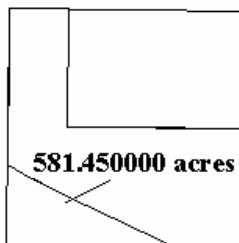
**East Cameron Area  
LA2 - Block 8**



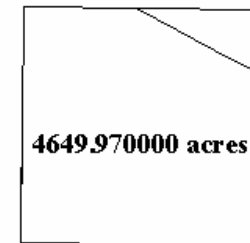
**East Cameron Area  
LA2 - Block 10**



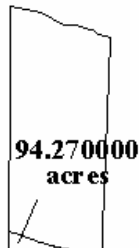
**East Cameron Area  
LA2 - Block 14**



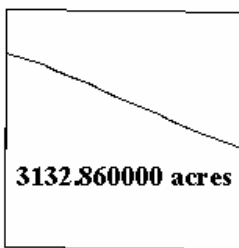
**East Cameron Area  
LA2 - Block 15**



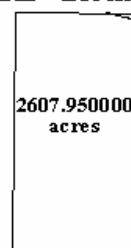
**East Cameron Area  
LA2 - Block 20**



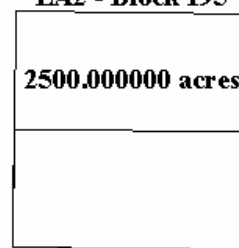
**East Cameron Area  
LA2 - Block 22**



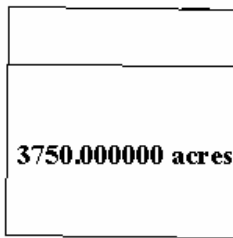
**East Cameron Area  
LA2 - Block 37**



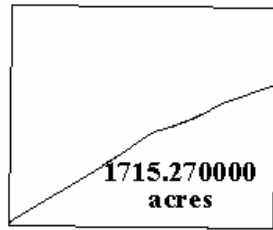
**East Cameron Area  
LA2 - Block 195**



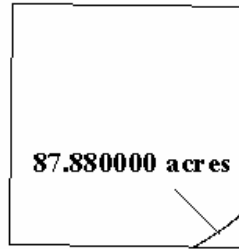
**East Cameron Area  
LA2 - Block 204**



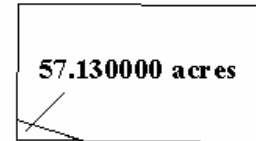
**Vermilion Area  
LA3 - Block 11**



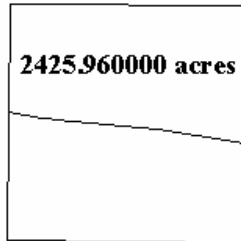
**Vermilion Area  
LA3 - Block 12**



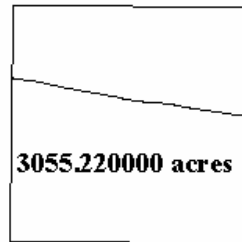
**Vermilion Area  
LA3 - Block 15**



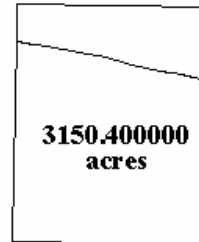
**Vermilion Area  
LA3 - Block 18**



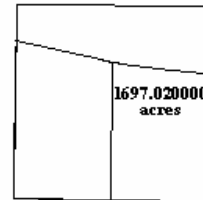
**Vermilion Area  
LA3 - Block 19**



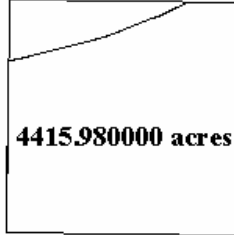
**Vermilion Area  
LA3 - Block 20**



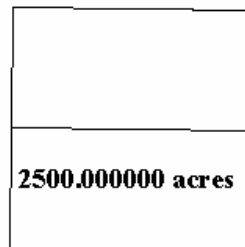
**Vermilion Area  
LA3 - Block 27**



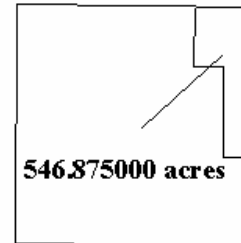
**Vermilion Area  
LA3 - Block 29**



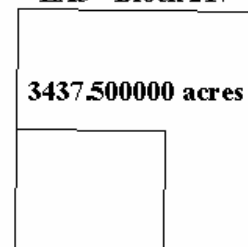
**Vermilion Area  
LA3 - Block 46**



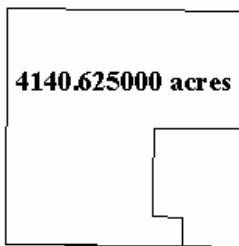
**Vermilion Area  
LA3 - Block 179**



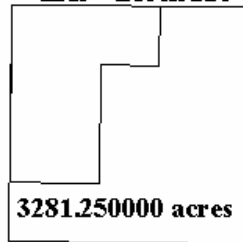
**Vermilion Area  
LA3 - Block 217**



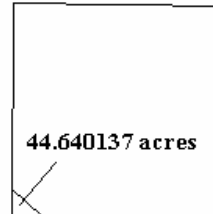
**Vermilion Area  
LA3 - Block 218**



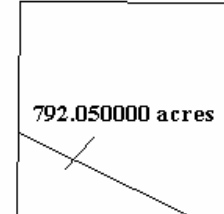
**Vermilion Area  
LA3 - Block 226**



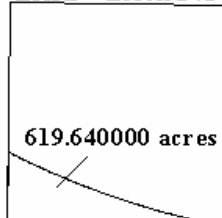
**South Marsh Island Area N  
LA3D - Block 221**



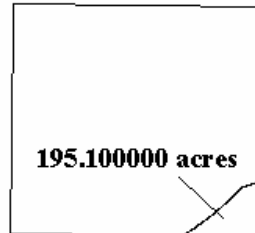
**South Marsh Island Area N  
LA3D - Block 230**



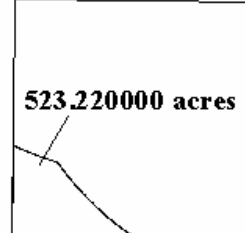
**South Marsh Island Area N  
LA3D - Block 241**



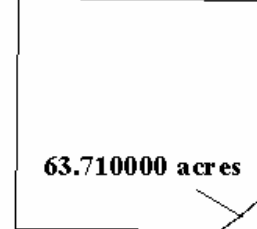
**Eugene Island Area  
LA4 - Block 9**



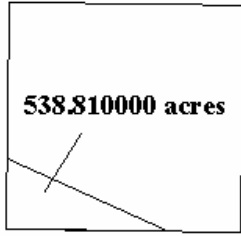
**Eugene Island Area  
LA4 - Block 11**



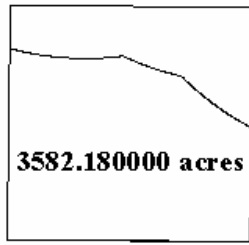
**Eugene Island Area  
LA4 - Block 12**



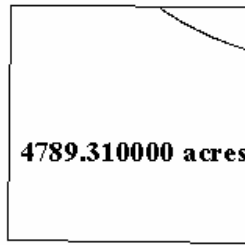
**Eugene Island Area  
LA4 - Block 18**



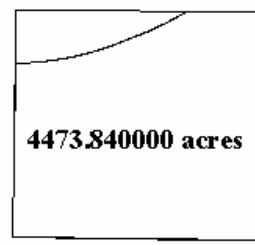
**Eugene Island Area  
LA4 - Block 20**



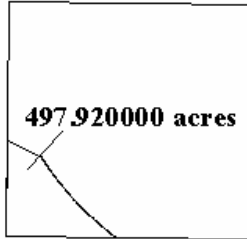
**Eugene Island Area  
LA4 - Block 21**



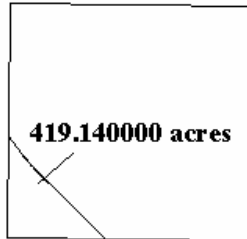
**Eugene Island Area  
LA4 - Block 25**



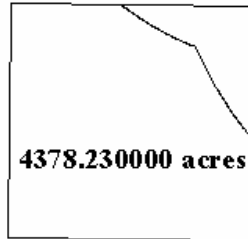
**Eugene Island Area  
LA4 - Block 35**



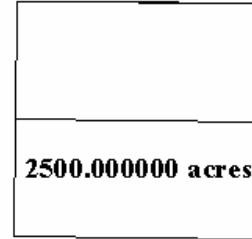
**Eugene Island Area  
LA4 - Block 37**



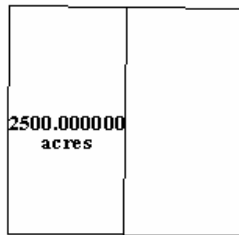
**Eugene Island Area  
LA4 - Block 38**



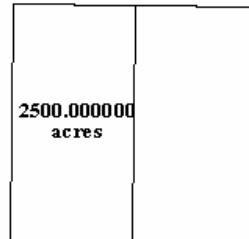
**Eugene Island Area  
LA4 - Block 64**



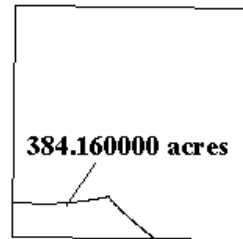
**Eugene Island Area  
LA4 - Block 93**



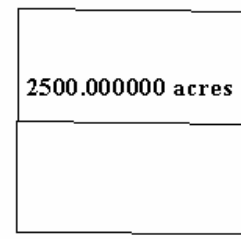
**Eugene Island Area  
LA4 - Block 116**



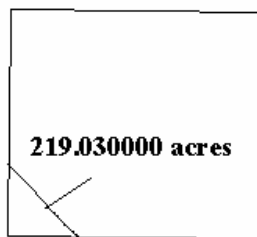
**Eugene Island Area  
LA4 - Block 12A**



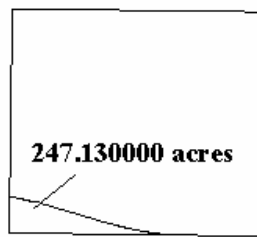
**Eugene Island Area South  
LA4A - Block 315**



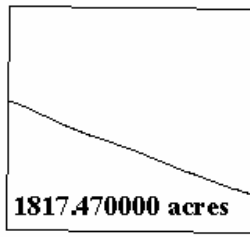
**Ship Shoal Area  
LA5 - Block 2**



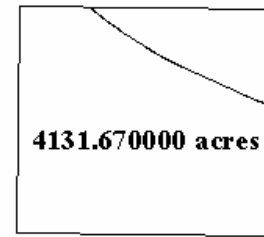
**Ship Shoal Area  
LA5 - Block 8**



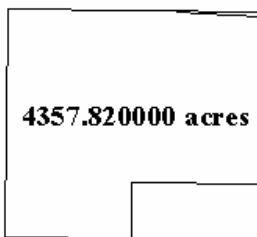
**Ship Shoal Area  
LA5 - Block 9**



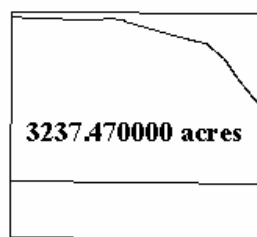
**Ship Shoal Area  
LA5 - Block 10**



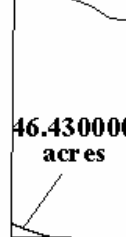
**Ship Shoal Area  
LA5 - Block 13**



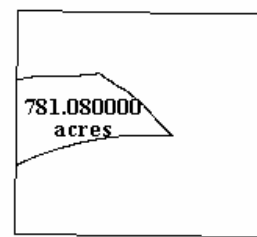
**Ship Shoal Area  
LA5 - Block 14**



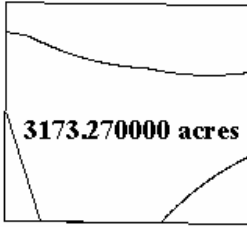
**Ship Shoal Area  
LA5 - Block 16**



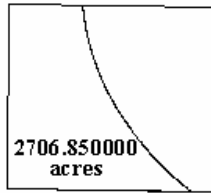
**Ship Shoal Area  
LA5 - Block 24**



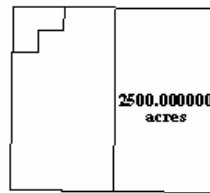
**Ship Shoal Area  
LA5 - Block 25**



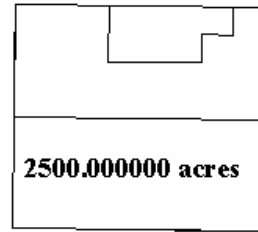
**Ship Shoal Area  
LA5 - Block 49**



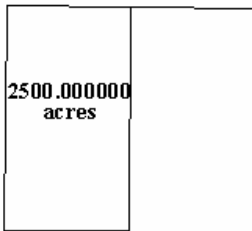
**Ship Shoal Area  
LA5 - Block 71**



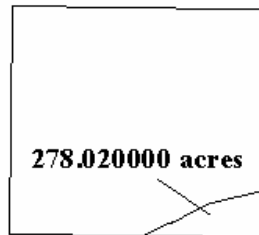
**Ship Shoal Area  
LA5 - Block 87**



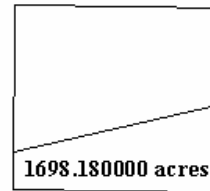
**Ship Shoal Area  
LA5 - Block 120**



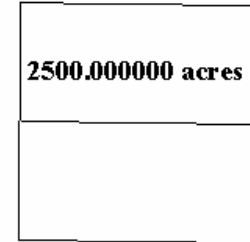
**South Timbalier Area  
LA6 - Block 9**



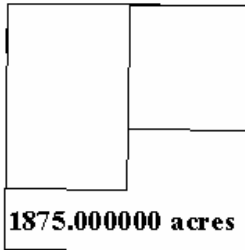
**South Timbalier Area  
LA6 - Block 10**



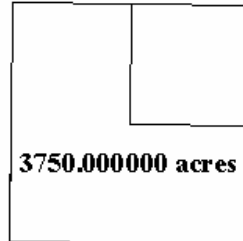
**South Timbalier Area  
LA6 - Block 22**



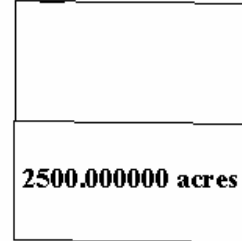
**South Timbalier Area  
LA6 - Block 27**



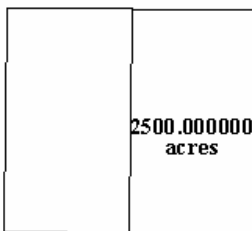
**South Timbalier Area  
LA6 - Block 28**



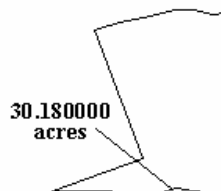
**South Timbalier Area  
LA6 - Block 86**



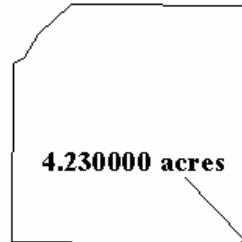
**South Pelto Area  
LA6B - Block 19**



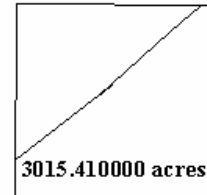
**Bay Marchand Area  
LA6C - Block 5**



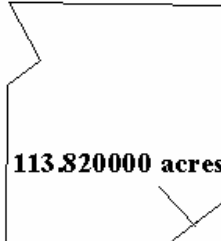
**Grand Isle Area  
LA7 - Block 15**



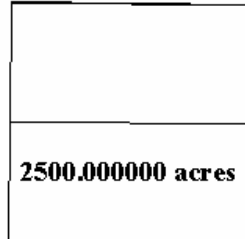
**Grand Isle Area  
LA7 - Block 24**



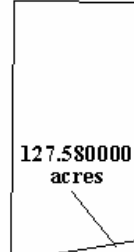
**Grand Isle Area  
LA7 - Block 25**



**Grand Isle Area  
LA7 - Block 29**



**West Delta Area  
LA8 - Block 16**



**West Delta Area  
LA8 - Block 18**

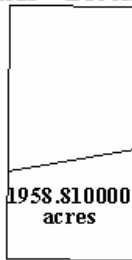




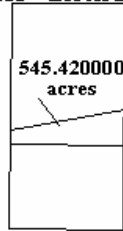
**West Delta Area  
LA8 - Block 19**



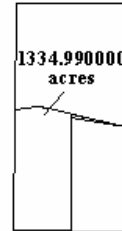
**West Delta Area  
LA8 - Block 20**



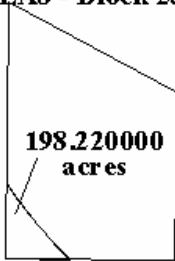
**West Delta Area  
LA8 - Block 21**



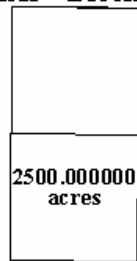
**West Delta Area  
LA8 - Block 22**



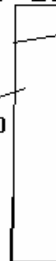
**West Delta Area  
LA8 - Block 25**



**West Delta Area  
LA8 - Block 34**



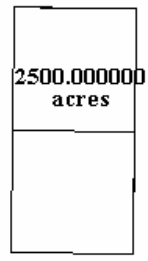
**West Delta Area  
LA8 - Block 37**



**West Delta Area  
LA8 - Block 56**



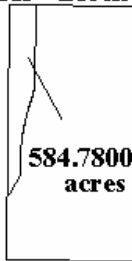
**West Delta Area  
LA8 - Block 67**



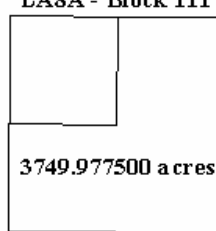
**West Delta Area  
LA8 - Block 68**



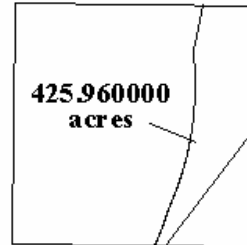
**West Delta Area  
LA8 - Block 81**



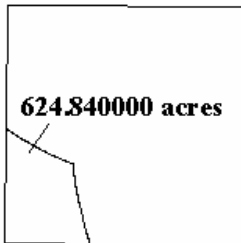
**West Delta Area South  
LASA - Block 111**



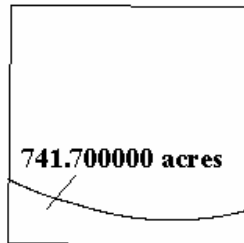
**South Pass Area  
LA9 - Block 17**



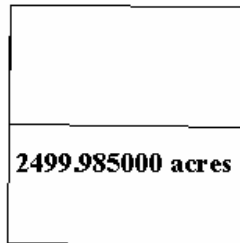
**South Pass Area  
LA9 - Block 29**



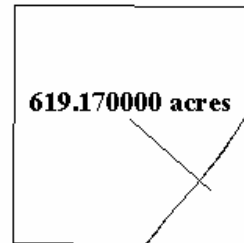
**South Pass Area  
LA9 - Block 35**



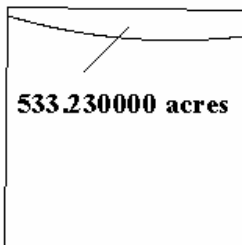
**South Pass Area  
LA9 - Block 37**



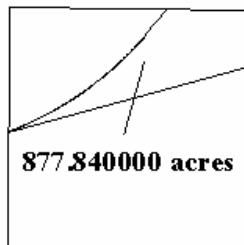
**South Pass Area  
LA9 - Block 39**



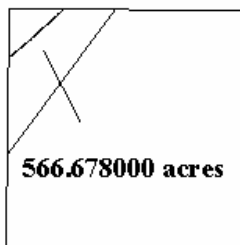
**South Pass Area  
LA9 - Block 52**



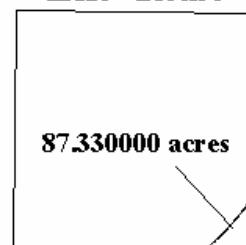
**South Pass Area  
LA9 - Block 57**



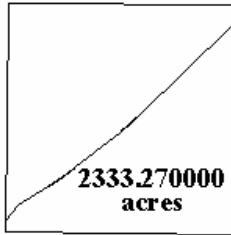
**South Pass Area S&E  
LA9A - Block 66**



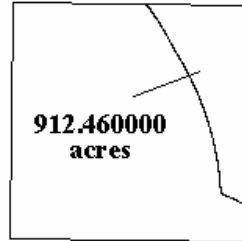
**Main Pass Area  
LA10 - Block 6**



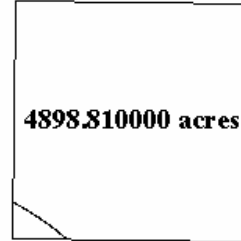
**Main Pass Area  
LA10 - Block 17**



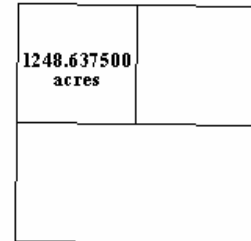
**Main Pass Area  
LA10 - Block 55**



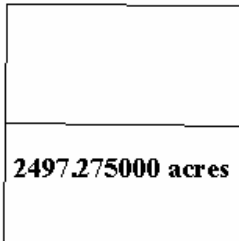
**Main Pass Area  
LA10 - Block 56**



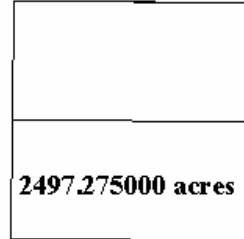
**Main Pass Area  
LA10 - Block 57**



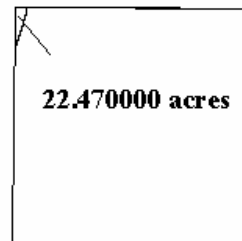
**Main Pass Area  
LA10 - Block 58**



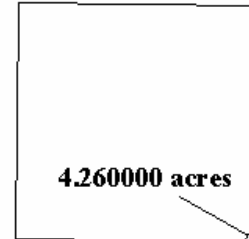
**Main Pass Area  
LA10 - Block 127**



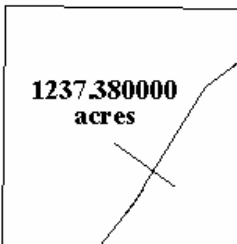
**Main Pass Area  
LA10 - Block 152**



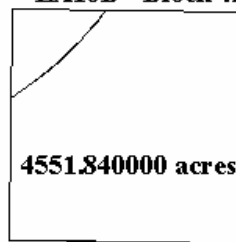
**Breton Sound Area  
LA10B - Block 24**



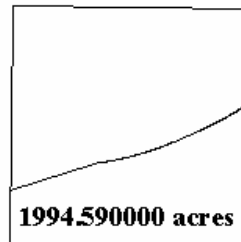
**Breton Sound Area  
LA10B - Block 39**



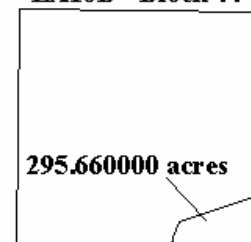
**Breton Sound Area  
LA10B - Block 42**



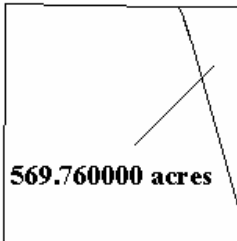
**Breton Sound Area  
LA10B - Block 43**



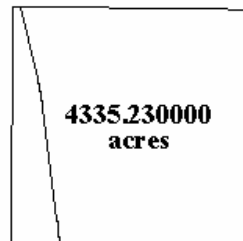
**Breton Sound Area  
LA10B - Block 44**



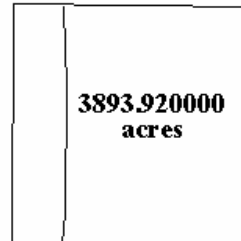
**Chandeleur Area  
LA11 - Block 1**



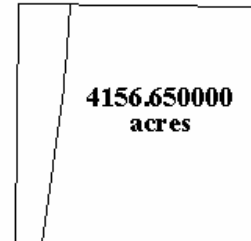
**Chandeleur Area  
LA11 - Block 3**



**Chandeleur Area  
LA11 - Block 5**



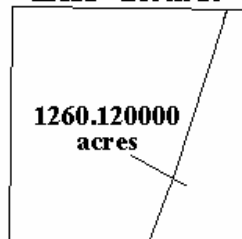
**Chandeleur Area  
LA11 - Block 8**



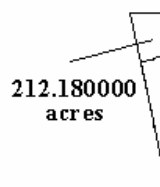
**Chandeleur Area  
LA11 - Block 15**



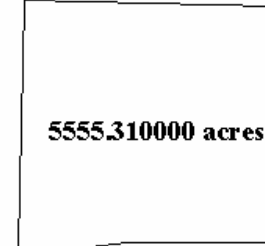
**Chandeleur Area  
LA11 - Block 16**



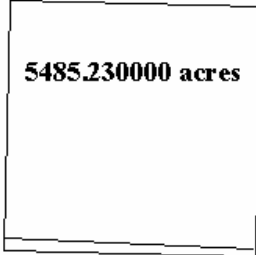
**Sabine Pass Area  
LA12 - Block 5**



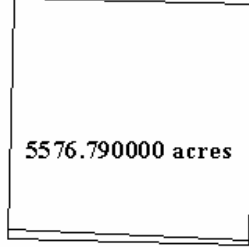
**Amery Terrace  
NG15-09 - Block 162**



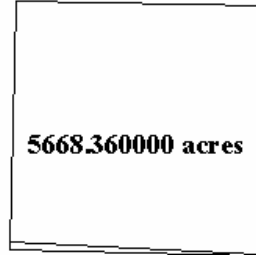
**Amery Terrace  
NG15-09 - Block 163**



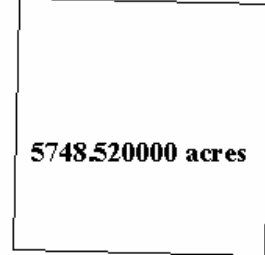
**Amery Terrace  
NG15-09 - Block 164**



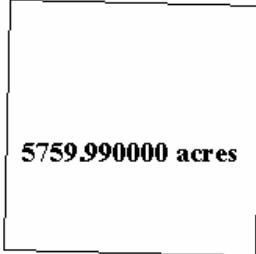
**Amery Terrace  
NG15-09 - Block 165**



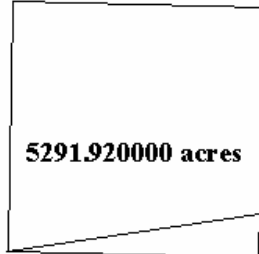
**Amery Terrace  
NG15-09 - Block 166**



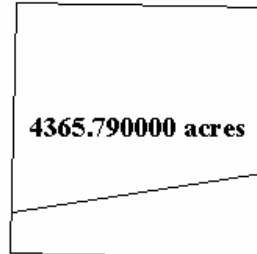
**Amery Terrace  
NG15-09 - Block 199**



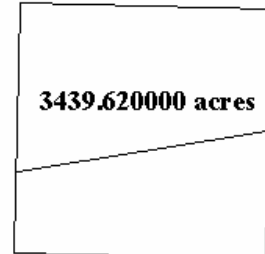
**Amery Terrace  
NG15-09 - Block 200**



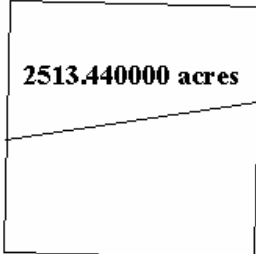
**Amery Terrace  
NG15-09 - Block 201**



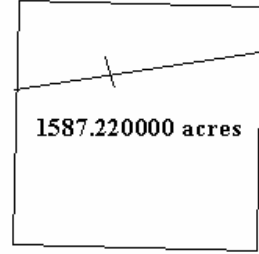
**Amery Terrace  
NG15-09 - Block 202**



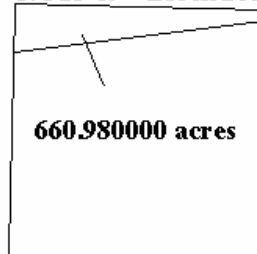
**Amery Terrace  
NG15-09 - Block 203**



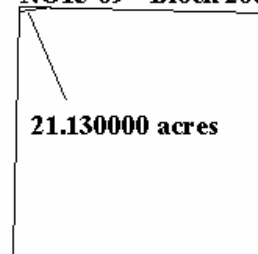
**Amery Terrace  
NG15-09 - Block 204**



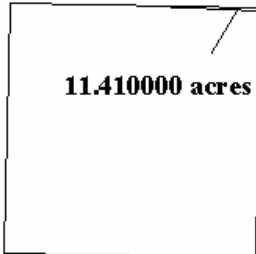
**Amery Terrace  
NG15-09 - Block 205**



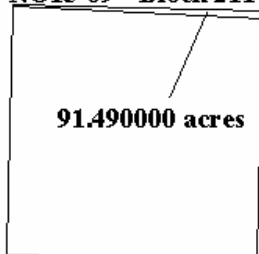
**Amery Terrace  
NG15-09 - Block 206**



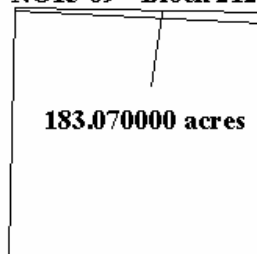
**Amery Terrace  
NG15-09 - Block 210**



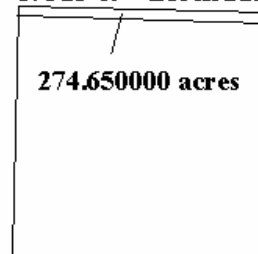
**Amery Terrace  
NG15-09 - Block 211**



**Amery Terrace  
NG15-09 - Block 212**



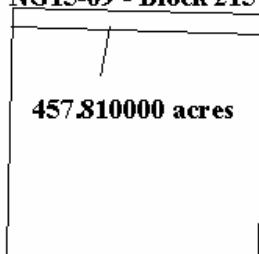
**Amery Terrace  
NG15-09 - Block 213**



**Amery Terrace  
NG15-09 - Block 214**



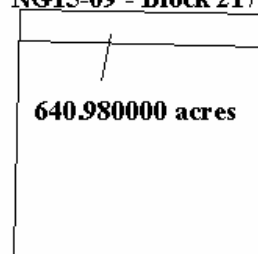
**Amery Terrace  
NG15-09 - Block 215**



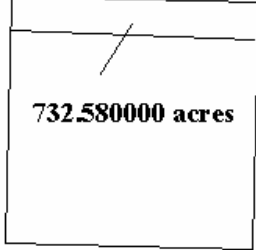
**Amery Terrace  
NG15-09 - Block 216**



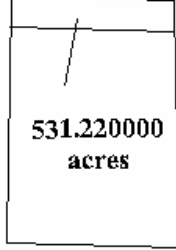
**Amery Terrace  
NG15-09 - Block 217**



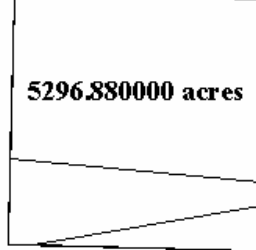
**Amery Terrace  
NG15-09 - Block 218**



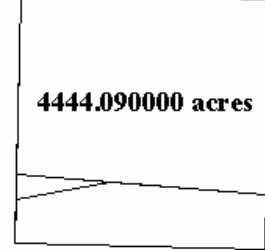
**Amery Terrace  
NG15-09 - Block 219**



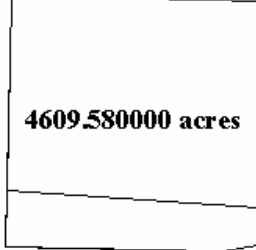
**Amery Terrace  
NG15-09 - Block 235**



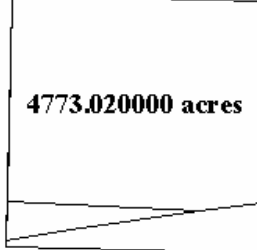
**Amery Terrace  
NG15-09 - Block 236**



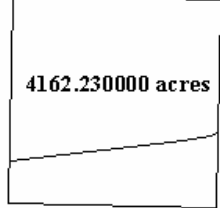
**Amery Terrace  
NG15-09 - Block 237**



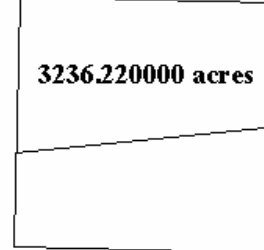
**Amery Terrace  
NG15-09 - Block 238**



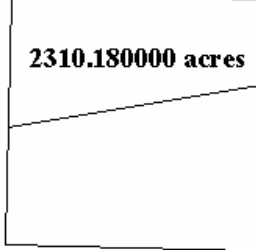
**Amery Terrace  
NG15-09 - Block 239**



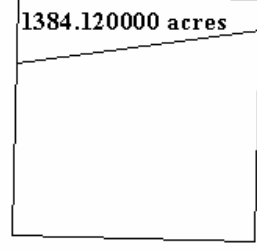
**Amery Terrace  
NG15-09 - Block 240**



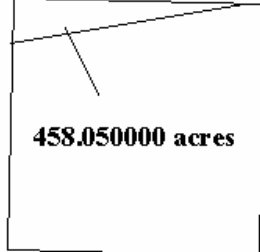
**Amery Terrace  
NG15-09 - Block 241**



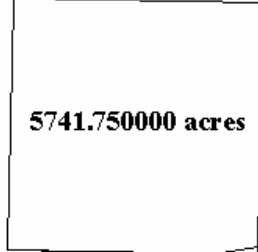
**Amery Terrace  
NG15-09 - Block 242**



**Amery Terrace  
NG15-09 - Block 243**



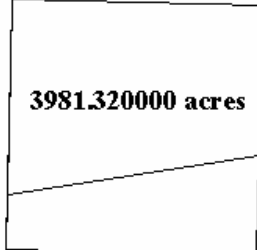
**Amery Terrace  
NG15-09 - Block 273**



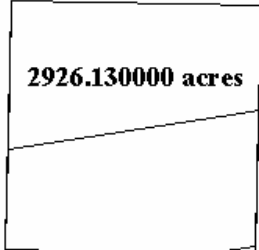
**Amery Terrace  
NG15-09 - Block 274**



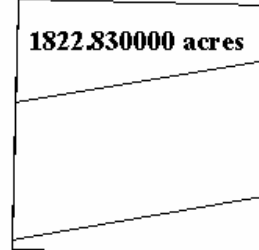
**Amery Terrace  
NG15-09 - Block 275**



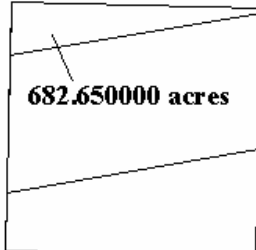
**Amery Terrace  
NG15-09 - Block 276**



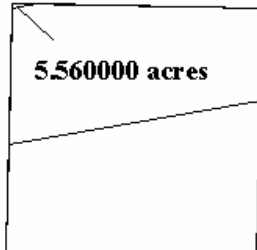
**Amery Terrace  
NG15-09 - Block 277**



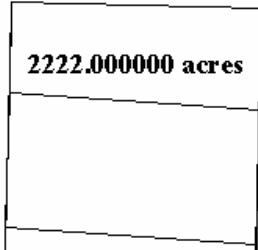
**Amery Terrace  
NG15-09 - Block 278**



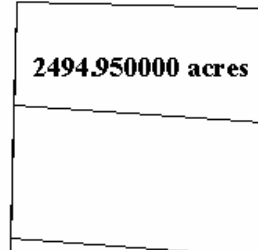
**Amery Terrace  
NG15-09 - Block 279**



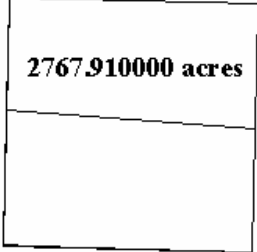
**Amery Terrace  
NG15-09 - Block 309**



**Amery Terrace  
NG15-09 - Block 310**



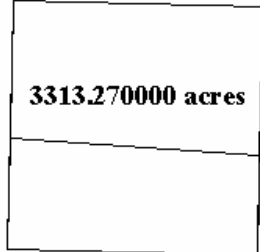
**Amery Terrace  
NG15-09 - Block 311**



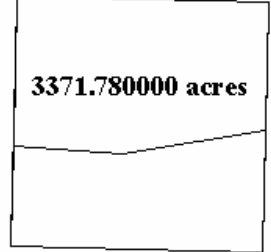
**Amery Terrace  
NG15-09 - Block 312**



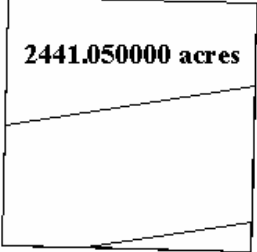
**Amery Terrace  
NG15-09 - Block 313**



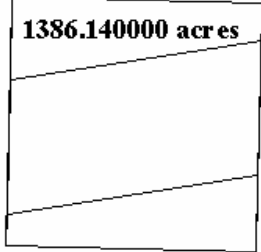
**Amery Terrace  
NG15-09 - Block 314**



**Amery Terrace  
NG15-09 - Block 315**



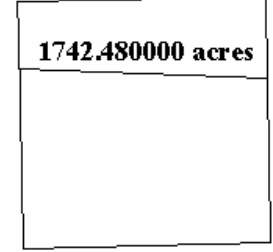
**Amery Terrace  
NG15-09 - Block 316**



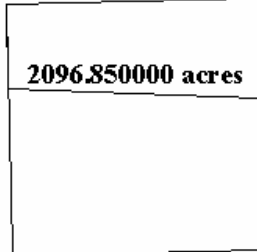
**Amery Terrace  
NG15-09 - Block 317**



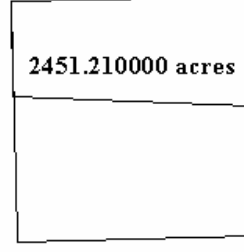
**Lund South  
NG16-07 - Block 177**



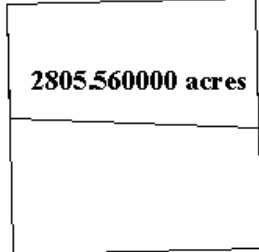
**Lund South  
NG16-07 - Block 178**



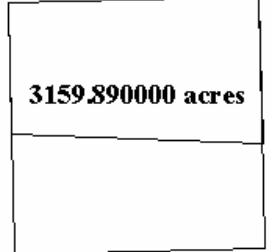
**Lund South  
NG16-07 - Block 179**



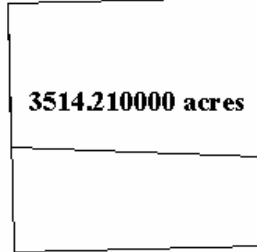
**Lund South  
NG16-07 - Block 180**



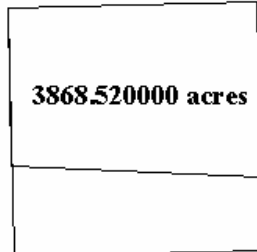
**Lund South  
NG16-07 - Block 181**



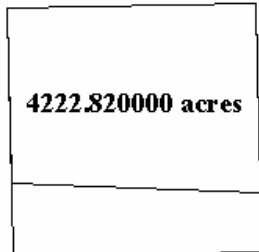
**Lund South  
NG16-07 - Block 182**



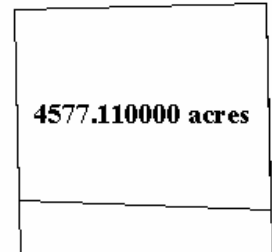
**Lund South  
NG16-07 - Block 183**



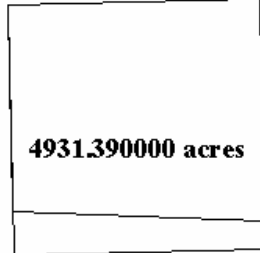
**Lund South  
NG16-07 - Block 184**



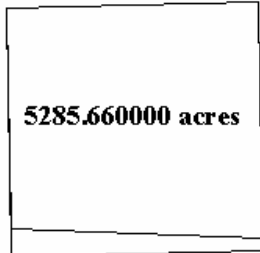
**Lund South  
NG16-07 - Block 185**



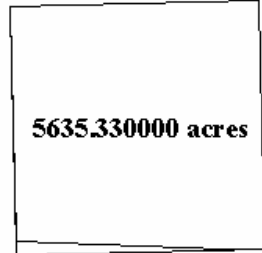
**Lund South  
NG16-07 - Block 186**



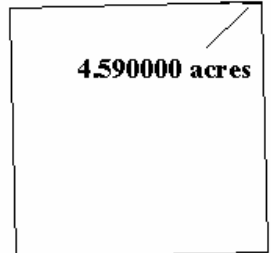
**Lund South  
NG16-07 - Block 187**



**Lund South  
NG16-07 - Block 188**



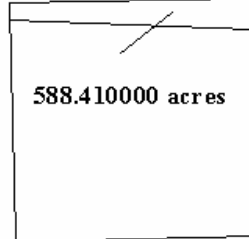
**Lund South  
NG16-07 - Block 232**



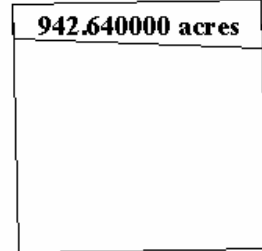
**Lund South  
NG16-07 - Block 233**



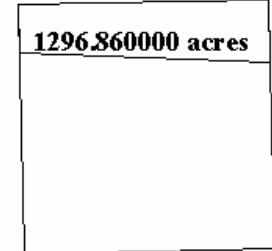
**Lund South  
NG16-07 - Block 234**



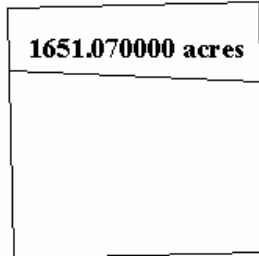
**Lund South  
NG16-07 - Block 235**



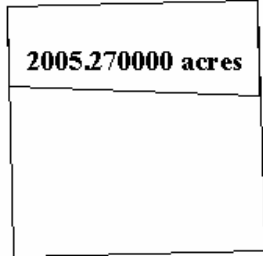
**Lund South  
NG16-07 - Block 236**



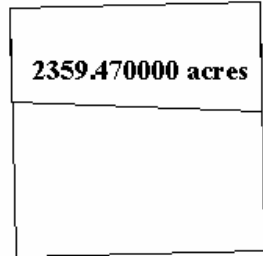
**Lund South  
NG16-07 - Block 237**



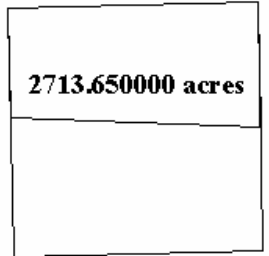
**Lund South  
NG16-07 - Block 238**



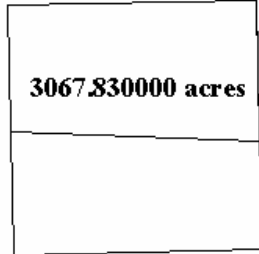
**Lund South  
NG16-07 - Block 239**



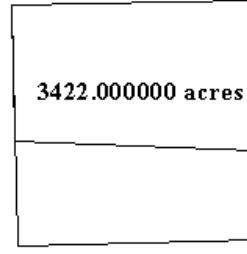
**Lund South  
NG16-07 - Block 240**



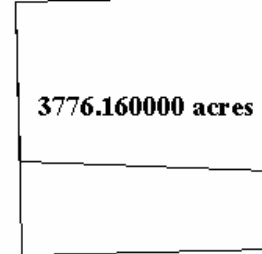
**Lund South  
NG16-07 - Block 241**



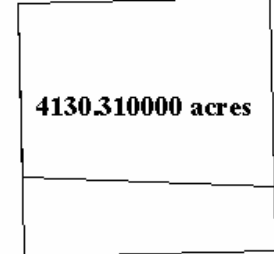
**Lund South  
NG16-07 - Block 242**



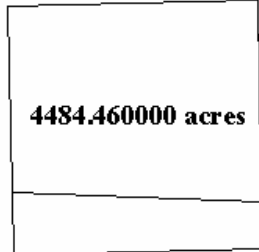
**Lund South  
NG16-07 - Block 243**



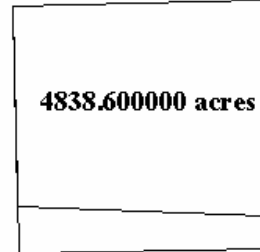
**Lund South  
NG16-07 - Block 244**



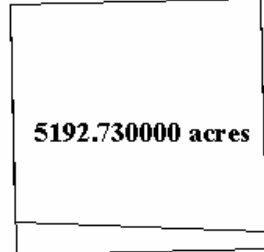
**Lund South  
NG16-07 - Block 245**



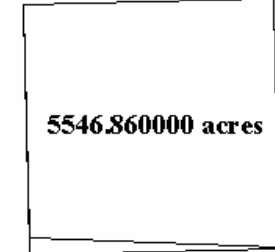
**Lund South  
NG16-07 - Block 246**



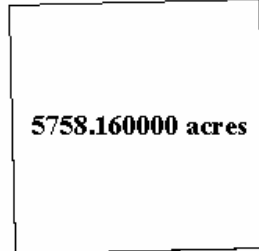
**Lund South  
NG16-07 - Block 247**



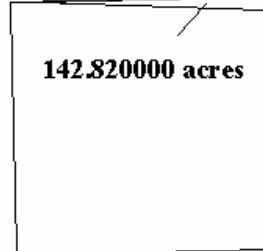
**Lund South  
NG16-07 - Block 248**



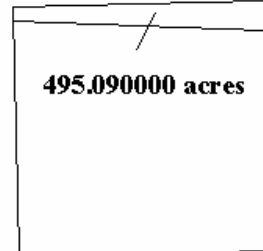
**Lund South  
NG16-07 - Block 249**



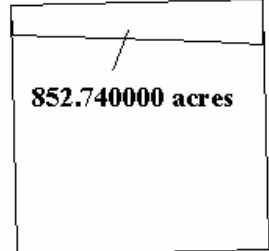
**Lund South  
NG16-07 - Block 293**



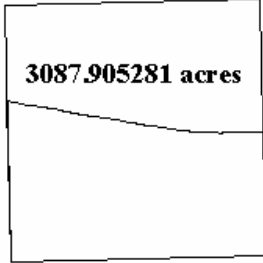
**Lund South  
NG16-07 - Block 294**



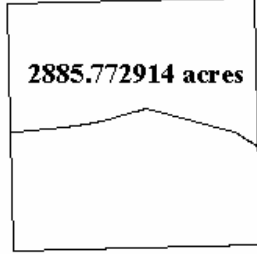
**Lund South  
NG16-07 - Block 295**



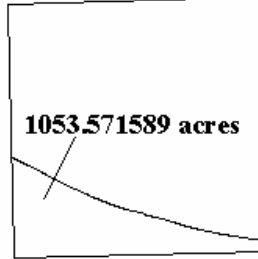
**Mobile  
NH16-04 - Block 814**



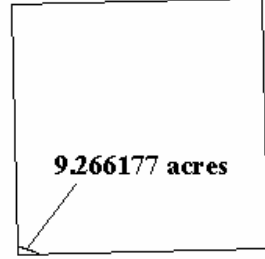
**Mobile  
NH16-04 - Block 815**



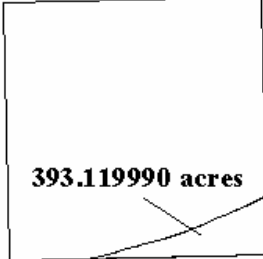
**Mobile  
NH16-04 - Block 816**



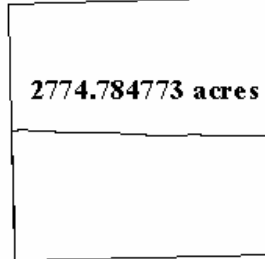
**Mobile  
NH16-04 - Block 817**



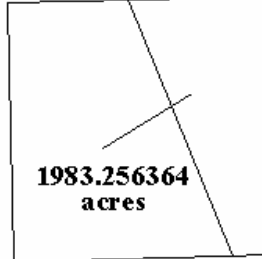
**Mobile  
NH16-04 - Block 818**



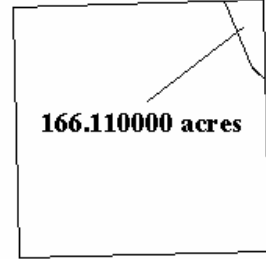
**Mobile  
NH16-04 - Block 829**



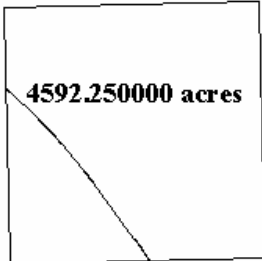
**Mobile  
NH16-04 - Block 853**



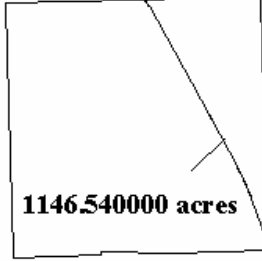
**Mobile  
NH16-04 - Block 897**



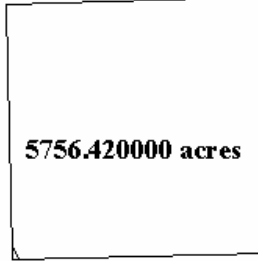
**Mobile  
NH16-04 - Block 898**



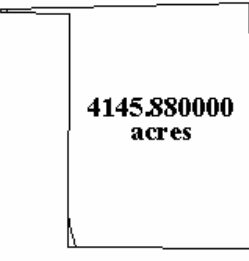
**Mobile  
NH16-04 - Block 942**



**Mobile  
NH16-04 - Block 943**



**Mobile  
NH16-04 - Block 987**



**Mississippi Canyon  
NH16-10 - Block 128**

