

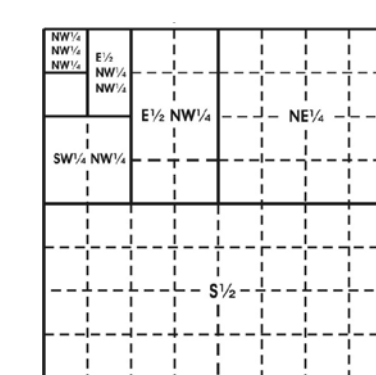
The boundaries of the regular blocks are 4,800 international meters on a side and contain 2,304 hectares. The regular boundaries are defined in terms of X and Y coordinates of the Universal Transverse Mercator Grid System based on the Geodetic Reference System (GRS) 1980 Ellipsoid.

Onshore planimetric base compilation is from Alaska Department of Natural Resources, Land Records Information Section: Alaska Coastline, 1:63,360, ed. 1.0 1998; with Rivers, and Bays added from 1:250,000 DNR coastline file.

Areas and dimensions of the irregular blocks along the zone boundary are as indicated.

The Submerged Lands Act Boundary and Limit of "8(ig) Zone" lines depicted hereon reflect the official federal position for Submerged Lands Act and OCS Lands Act purposes. The areas of the fractional blocks abutting these lines have been determined and are as depicted on the Supplemental Official OCS Block Diagrams (SOBDs). Consult the SOBDs for official descriptions and approval dates.

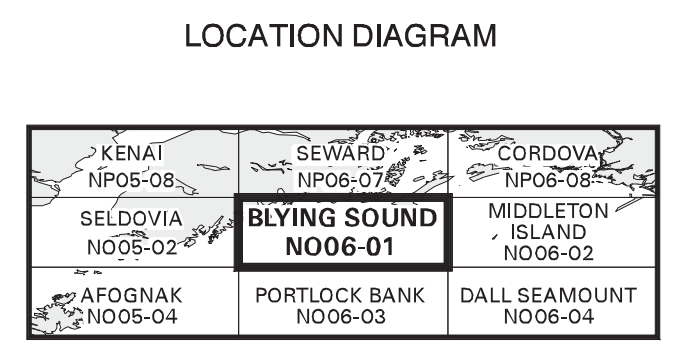
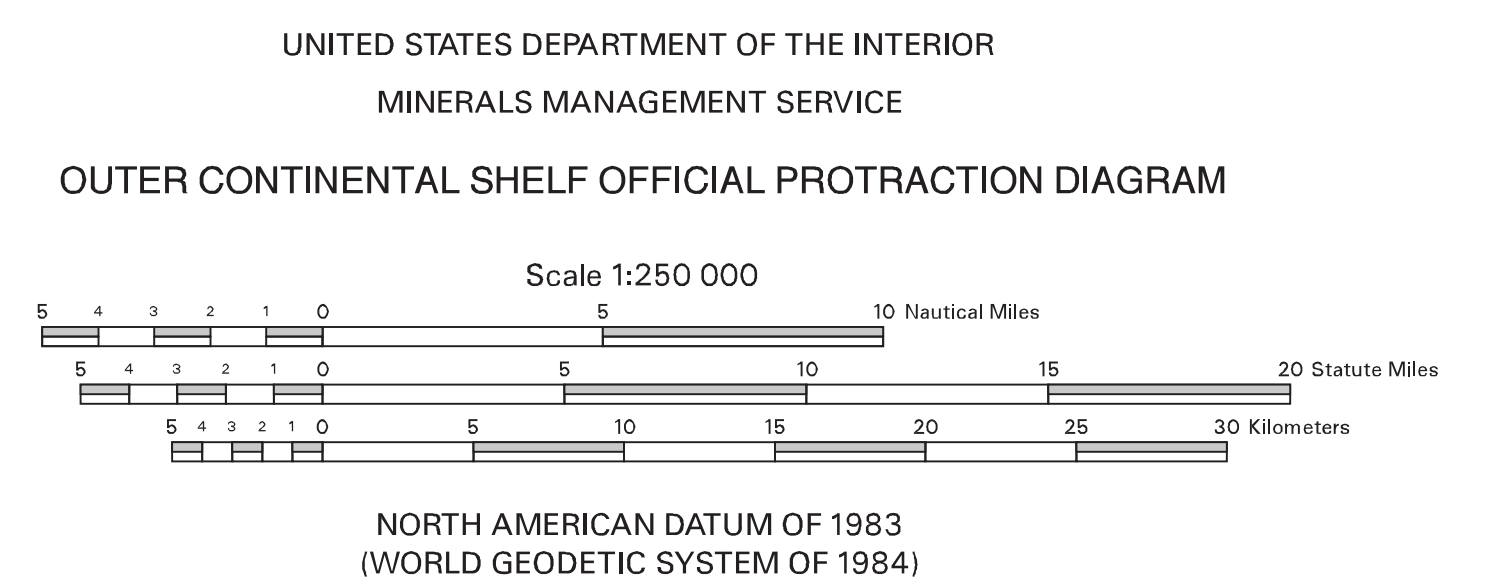
National Wildlife Refuge boundaries were obtained from <http://alaska.fws.gov/aba/fm/CIS/refuge.htm>.



Subdivision of Blocks on the Outer Continental Shelf

Typical method of subdivision of the regular blocks, each subdivision being an aliquot part of the total, based on midpoint subdivision throughout.

Copies of these diagrams and other information may be obtained at the appropriate MMS OCS Region or from <http://www.mms.gov/d/maps.htm>.



LOCATION DIAGRAM

This diagram is prepared in accordance with 30 CFR 256.8

For the Director
Isabel Hammel
Chief, Mapping and Boundary Branch, Leasing Division
Denver, Colorado Date 05/JUL-2004