

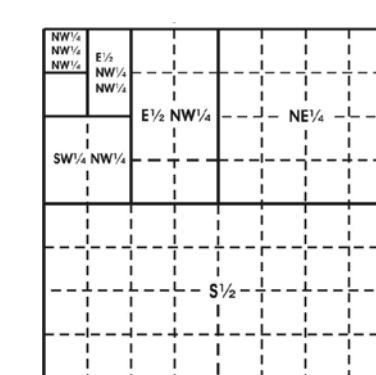
The boundaries of the regular blocks are 4,800 international meters on a side and contain 2,304 hectares. The regular boundaries are defined in terms of X and Y coordinates of the Universal Transverse Mercator Grid System based on the Geodetic Reference System (GRS) 1980 Ellipsoid.

Onshore planimetric base compilation is from Alaska Department of Natural Resources, Land Records Information Section: Alaska Coastline, 1:63,360, ed. 1.0 1998; with Rivers, and Bays added from 1:250,000 DNR coastline file.

National Wildlife Refuge boundaries were obtained from <http://alaska.fws.gov/aba/tm/CIS/refuge.htm>.

The Submerged Lands Act Boundary and the Limit of "8(g) Zone" depicted hereon reflect the official Federal position for Submerged Lands Act and OCS Lands Act purposes. The areas of the fractional blocks abutting these lines have been determined and are as depicted on the Supplemental Official OCS Block Diagrams (SOBDs). Consult the SOBDs for official descriptions and approval dates.

This revised diagram supersedes protraction diagram CORDOVA NP06-08, approved 01-SEP-1994.

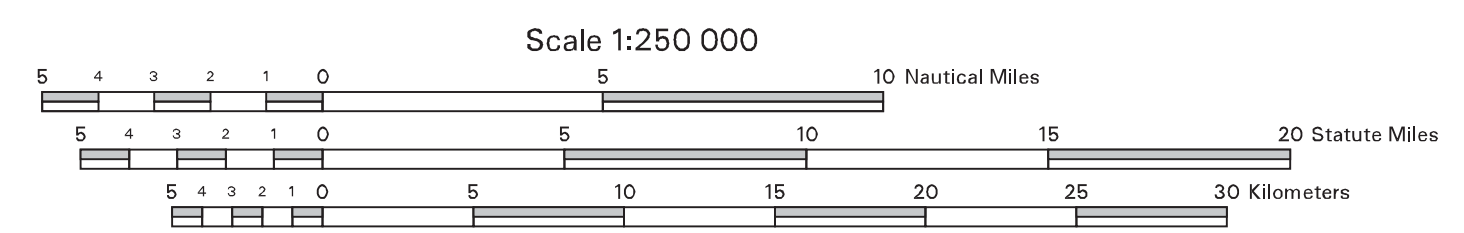


Subdivision of Blocks on the Outer Continental Shelf

Typical method of subdivision of the regular blocks, each subdivision being an aliquot part of the total, based on midpoint subdivision throughout.

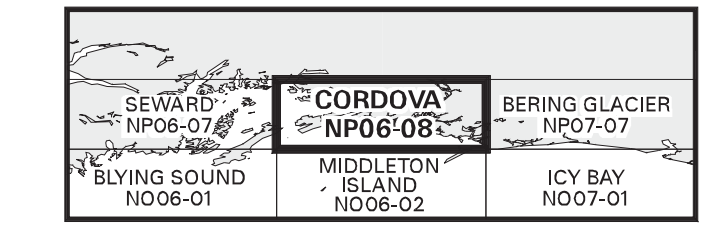
Copies of these diagrams and other information may be obtained at the appropriate MMS OCS Region or from <http://www.mms.gov/d/maps.htm>.

UNITED STATES DEPARTMENT OF THE INTERIOR
MINERALS MANAGEMENT SERVICE
OUTER CONTINENTAL SHELF OFFICIAL PROTRACTION DIAGRAM



NORTH AMERICAN DATUM OF 1983
(WORLD GEODETIC SYSTEM OF 1984)

LOCATION DIAGRAM



This diagram is prepared in accordance with 30 CFR 256.8

For the Director
Isabel H. Hummel
Chief, Mapping and Boundary Branch, Leasing Division
Denver, Colorado Date 05-JUL-2004

Revised