

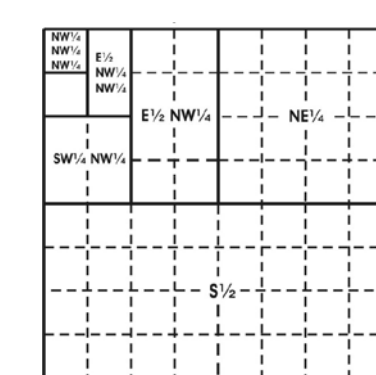
The boundaries of the regular blocks are 4,800 international meters on a side and contain 2,304 hectares. The regular boundaries are defined in terms of X and Y coordinates of the Universal Transverse Mercator Grid System based on the Geodetic Reference System (GRS) 1980 Ellipsoid.

The U.S. - Russia provisional maritime boundary depicted here is pending the entry into force of applicable boundary delimitation agreements and, beyond 200 nautical miles, pending the establishment of United States continental shelf jurisdiction, if any.

Areas and dimensions of the irregular blocks along the zone boundary are as indicated.

The areas of the fractional blocks abutting the U.S. - Russia provisional maritime boundary line have been determined and are as depicted on the Supplemental Official OCS Block Diagrams (SOBDs). Consult the SOBDs for official descriptions and approval dates.

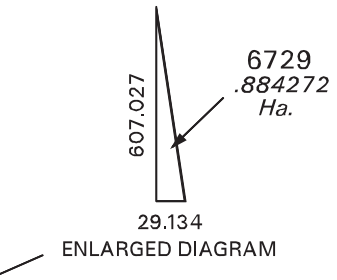
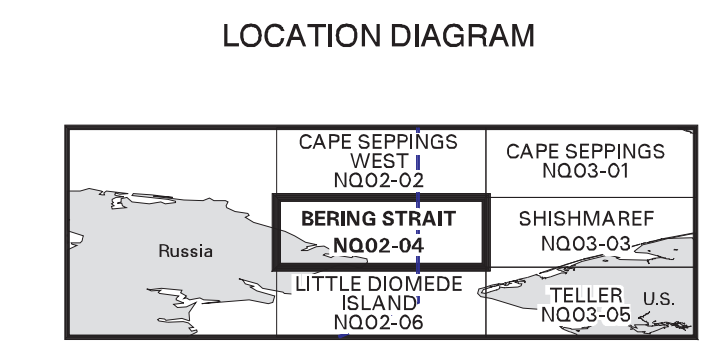
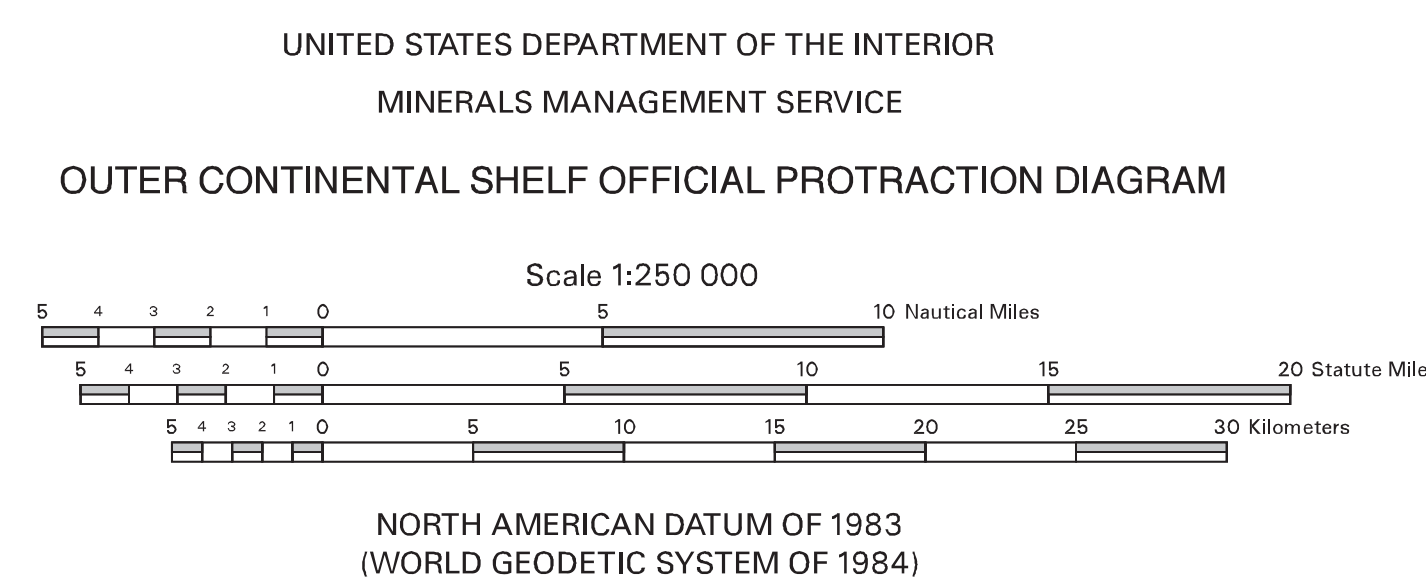
Onshore planimetric base compilation is from World Vector Shoreline, 1:250,000 downloaded from <http://rimme.cngdc.noaa.gov/mgg/coast/geotcoast.html>.



Subdivision of Blocks on the Outer Continental Shelf

Typical method of subdivision of the regular blocks, each subdivision being an aliquot part of the total, based on midpoint subdivision throughout.

Copies of these diagrams and other information may be obtained at the appropriate MMS OCS Region or from <http://www.mms.gov/ld/maps.htm>.



This diagram is prepared in accordance with 30 CFR 256.8

For the Director  
*Isabel Hammel*  
Chief, Mapping and Boundary Branch, Leasing Division  
Denver, Colorado Date: 26-AUG-2004