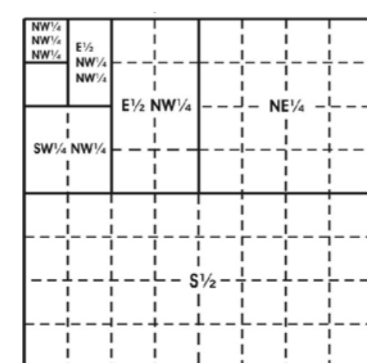


The boundaries of the regular blocks are 4,800 international meters on a side and contain 2,304 hectares. The regular boundaries are defined in terms of X and Y coordinates of the Universal Transverse Mercator Grid System based on the Geodetic Reference System (GRS) 1980 Ellipsoid.

Although not shown, the 200 nautical mile Continental Shelf Boundary lies within this diagram.

This revised diagram supersedes protraction diagram WILMINGTON VALLEY NJ19-10, approved 23-AUG-1996.

Areas and dimensions of the irregular blocks along the zone boundary are as indicated.

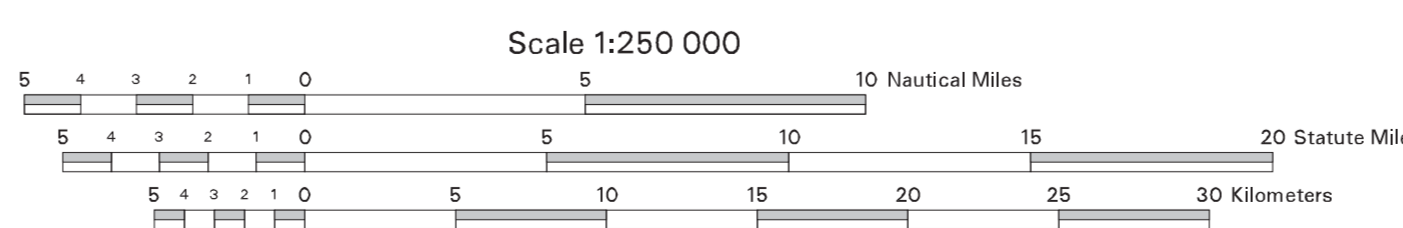


Subdivision of Blocks on the Outer Continental Shelf

Typical method of subdivision of the regular blocks, each subdivision being an integral part of the total, based on midpoint subdivision throughout.

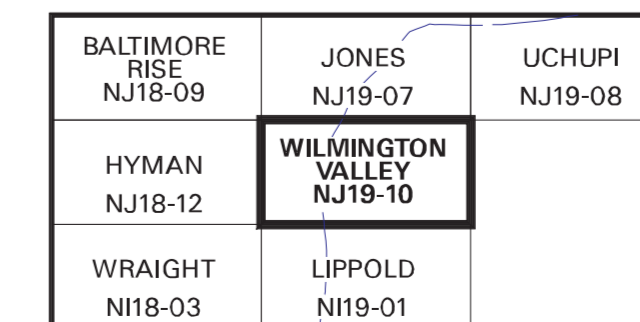
Copies of these diagrams and other information may be obtained at the appropriate BOEMRE OCS Region or from <http://www.boemre.gov/offshore/mapping/index.htm>.

UNITED STATES DEPARTMENT OF THE INTERIOR
 BUREAU OF OCEAN ENERGY MANAGEMENT, REGULATION AND ENFORCEMENT
 OUTER CONTINENTAL SHELF OFFICIAL PROTRACTION DIAGRAM



NORTH AMERICAN DATUM OF 1983
 (WORLD GEODETIC SYSTEM OF 1984)

LOCATION DIAGRAM



This diagram is prepared in accordance with 30 CFR 256.8

For the Director

 Chief, Leasing Division, Mapping and Boundary Branch
 Herndon, Virginia Date: 01-APR-2008

Revised