

Outer Continental Shelf Renewable Energy Leases

Map Book

March 2019

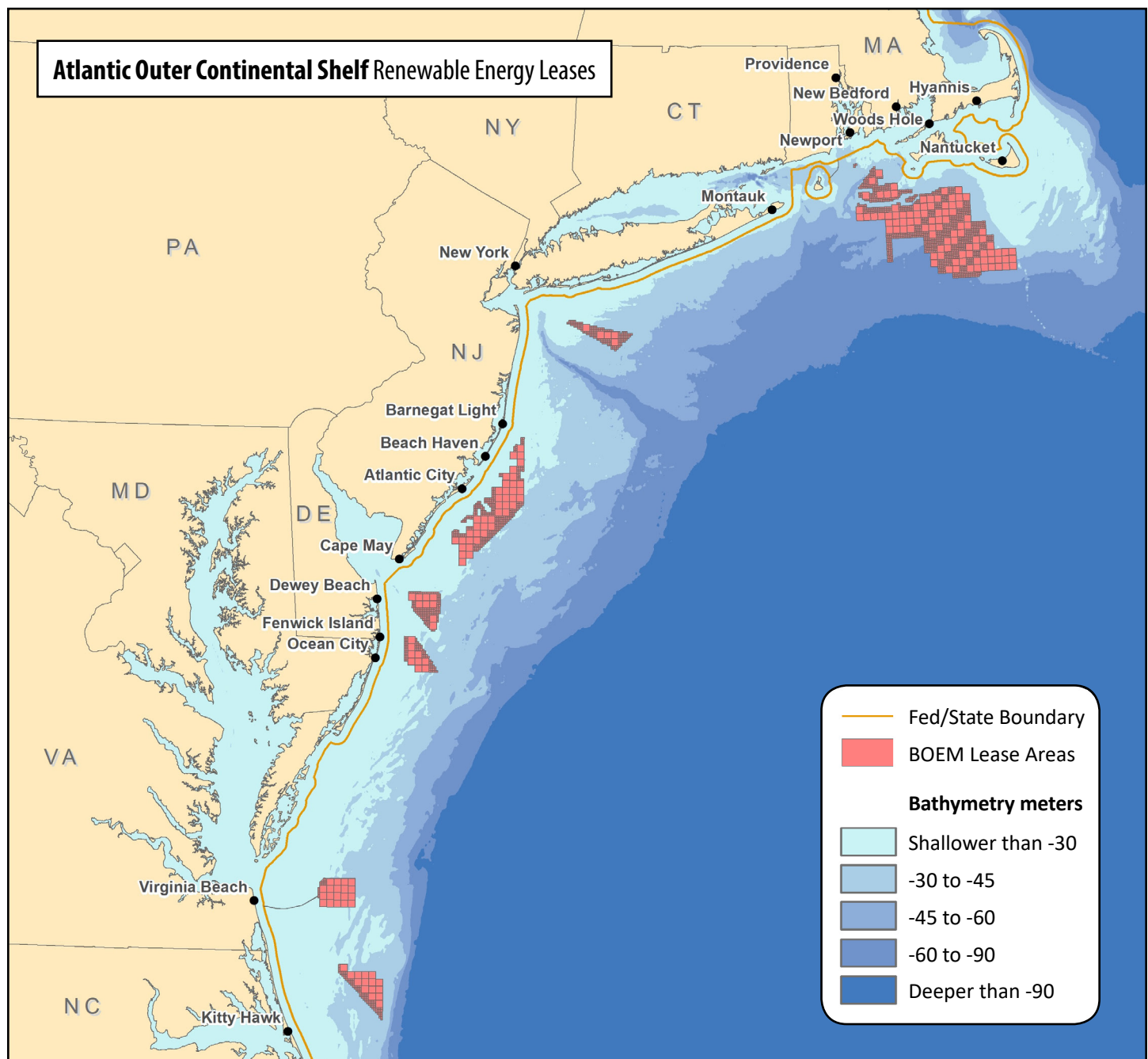


BOEM

BOEM's Renewable Energy Program

Department of the Interior's Bureau of Ocean Energy Management (BOEM) is responsible for overseeing offshore renewable energy development in Federal waters.

For more detailed information about the status and lineage of these activities, visit our website: www.boem.gov/Renewable-Energy-State-Activities



This book provides an overview of active commercial and research leases issued by BOEM to date. Each page is focused on a single lease and provides relevant statistics about the lease.

The following information regarding each lease is listed on the maps:

State: The state task force involved in the planning process

Lease Number: A unique alphanumeric number assigned by BOEM to manage lease documentation

Lessee: The company currently holding the lease

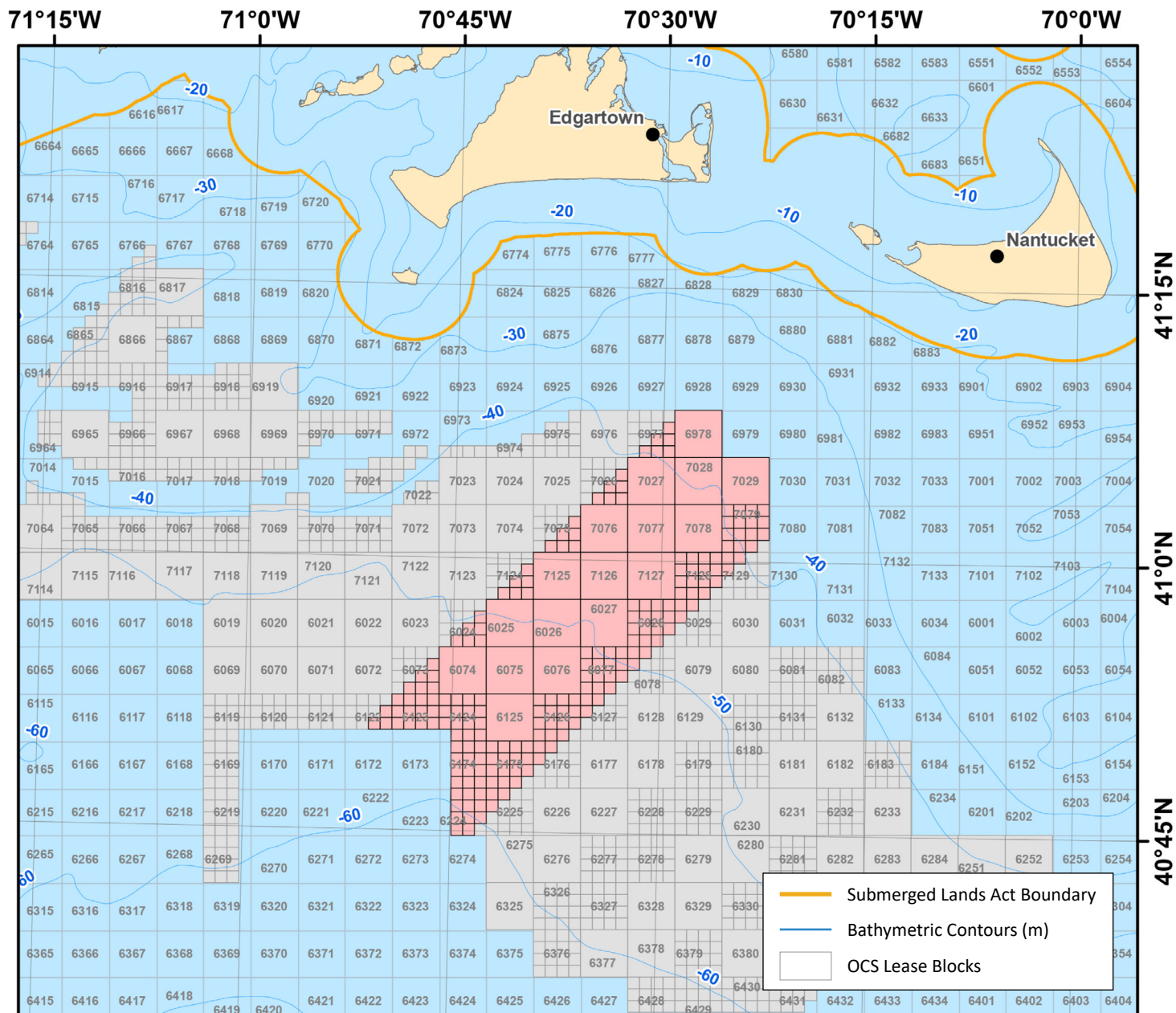
Lease Type: There are three possible types of leases: *Commercial, Research or Limited*

Lease Date: The effective date of the lease

Acres: The total acreage of the lease area

Table of Contents

Massachusetts OCS-A 0501	4
Massachusetts OCS-A 0500	5
Massachusetts OCS-A 0520	6
Massachusetts OCS-A 0521	7
Massachusetts OCS-A 0522	8
Rhode Island/Massachusetts OCS-A 0487	9
Rhode Island/Massachusetts OCS-A 0486	10
New York OCS-A 0512	11
New Jersey OCS-A 0499	12
New Jersey OCS-A 0498	13
Delaware OCS-A 0482	14
Delaware OCS-A 0519	15
Maryland OCS-A 0490	16
Virginia OCS-A 0483	17
Virginia OCS-A 0497	18
North Carolina OCS-A 0508	19



Coordinate System: GCS North American 1983 UTM Zone 19

www.boem.gov/Commercial-Wind-Leasing-Offshore-Massachusetts

State: Massachusetts

Lease Number: OCS-A 0501

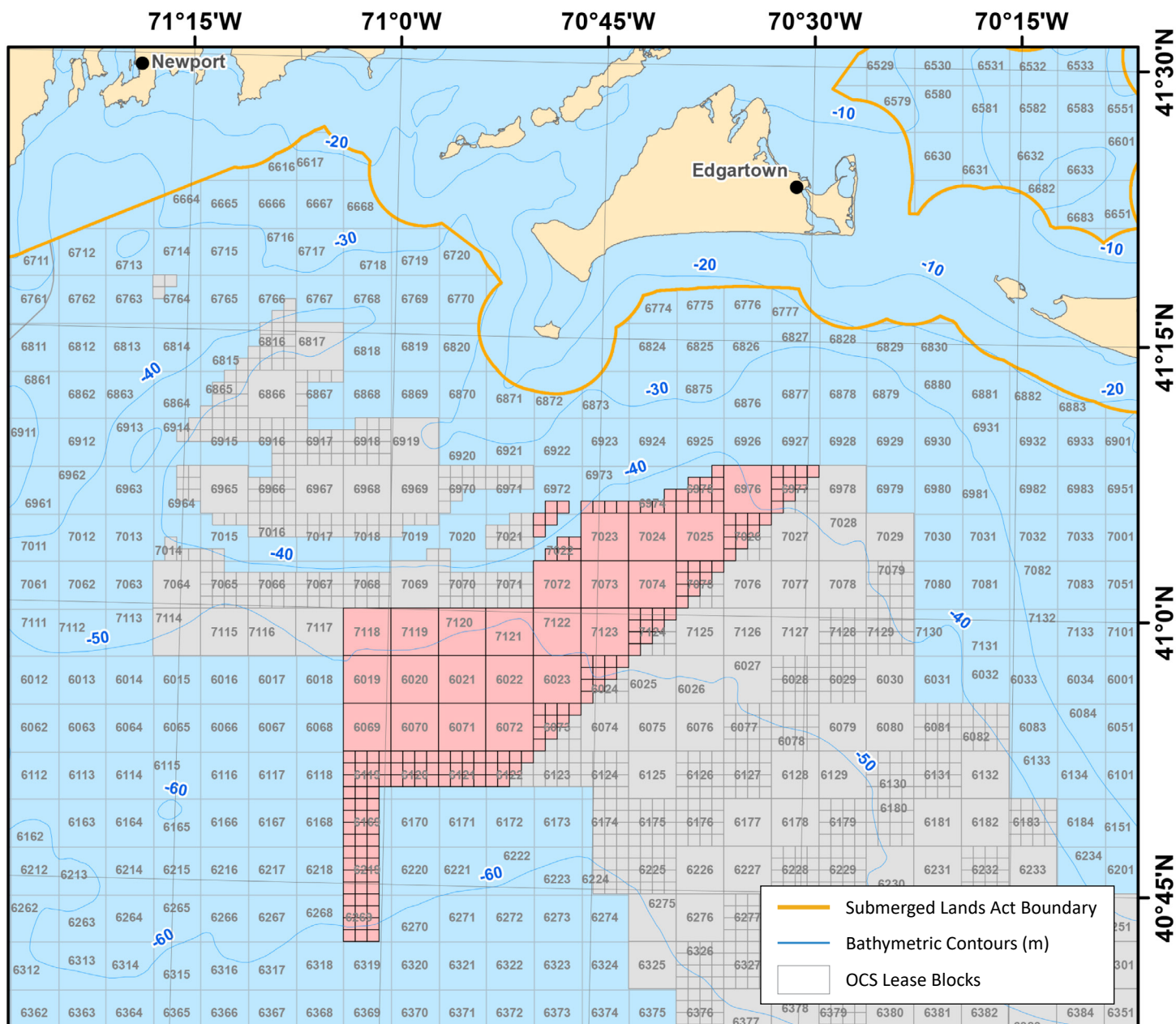
Lessee: Vineyard Wind LLC

Lease Type: Commercial

Lease Date: 4/1/2015

Acres: 166,886





0 5 10 15 20
Nautical Miles

Coordinate System: GCS North American 1983 UTM Zone 19

www.boem.gov/Commercial-Wind-Leasing-Offshore-Massachusetts

State: Massachusetts

Lease Number: OCS-A 0500

Lessee: Bay State Wind LLC

Lease Type: Commercial

Lease Date: 4/1/2015

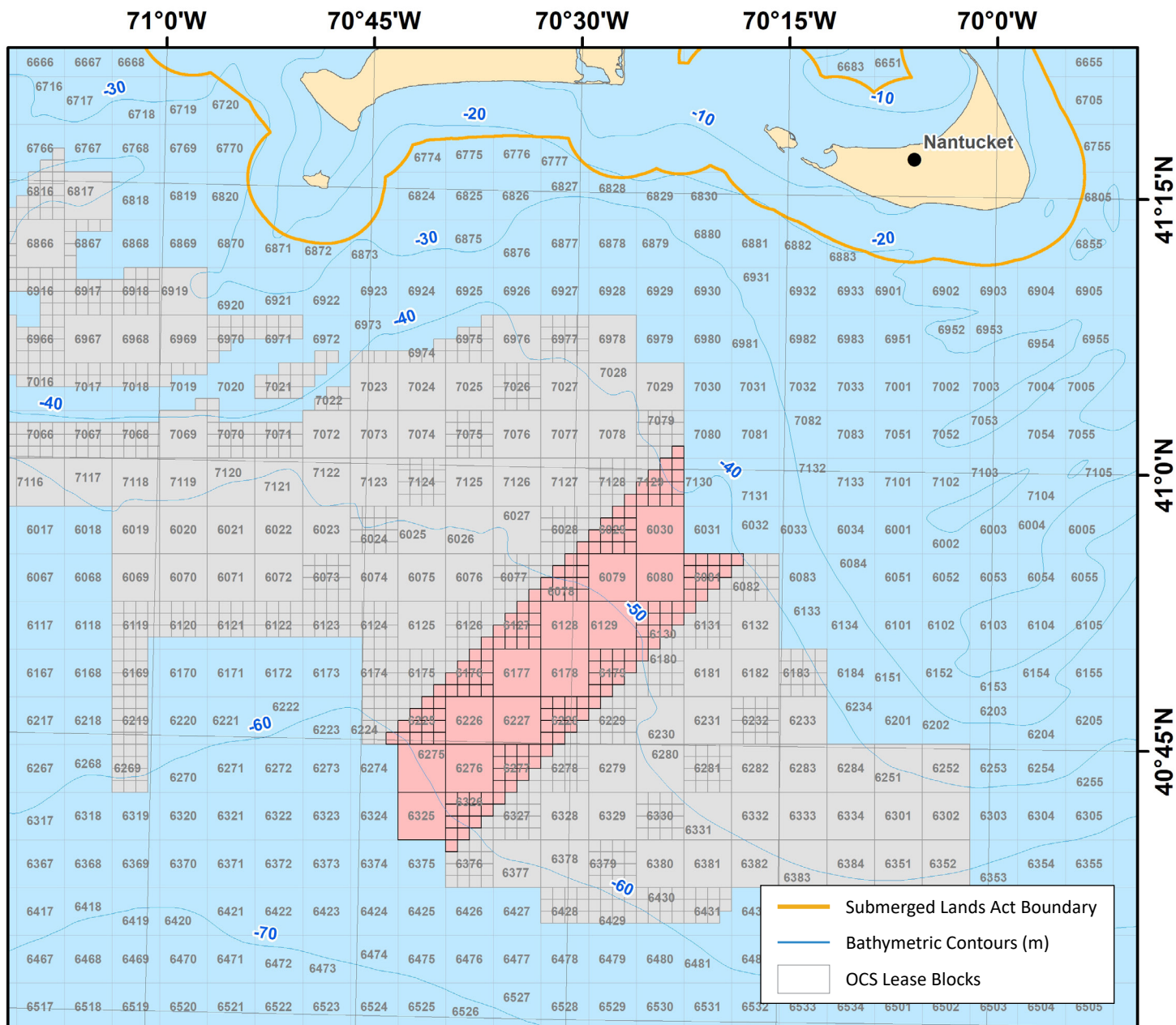
Acres: 187,523

March 2019 | 5



BOEM





0 5 10 15 20
Nautical Miles

Coordinate System: GCS North American 1983 UTM Zone 19

www.boem.gov/Massachusetts

State: Massachusetts

Lease Number: OCS-A 0520

Lessee: Equinor Wind US LLC

Lease Type: Commercial

Lease Date: 4/1/2019

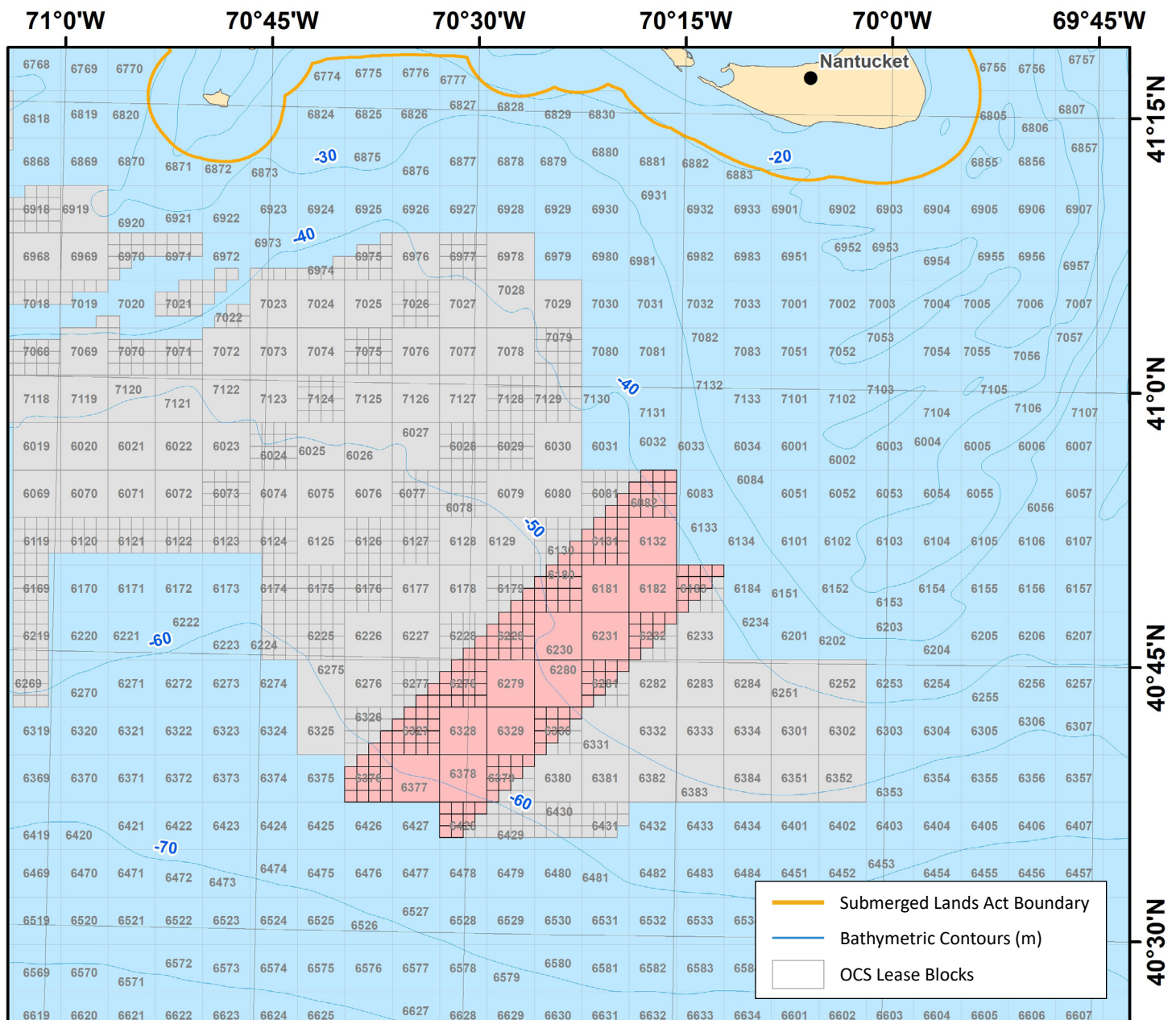
Acres: 128,811

March 2019 | 6



BOEM





0 5 10 15 20
Nautical Miles

Coordinate System: GCS North American 1983 UTM Zone 19

www.boem.gov/Massachusetts

State: Massachusetts

Lease Number: OCS-A 0521

Lessee: Mayflower Wind Energy, LLC

Lease Type: Commercial

Lease Date: 4/1/2019

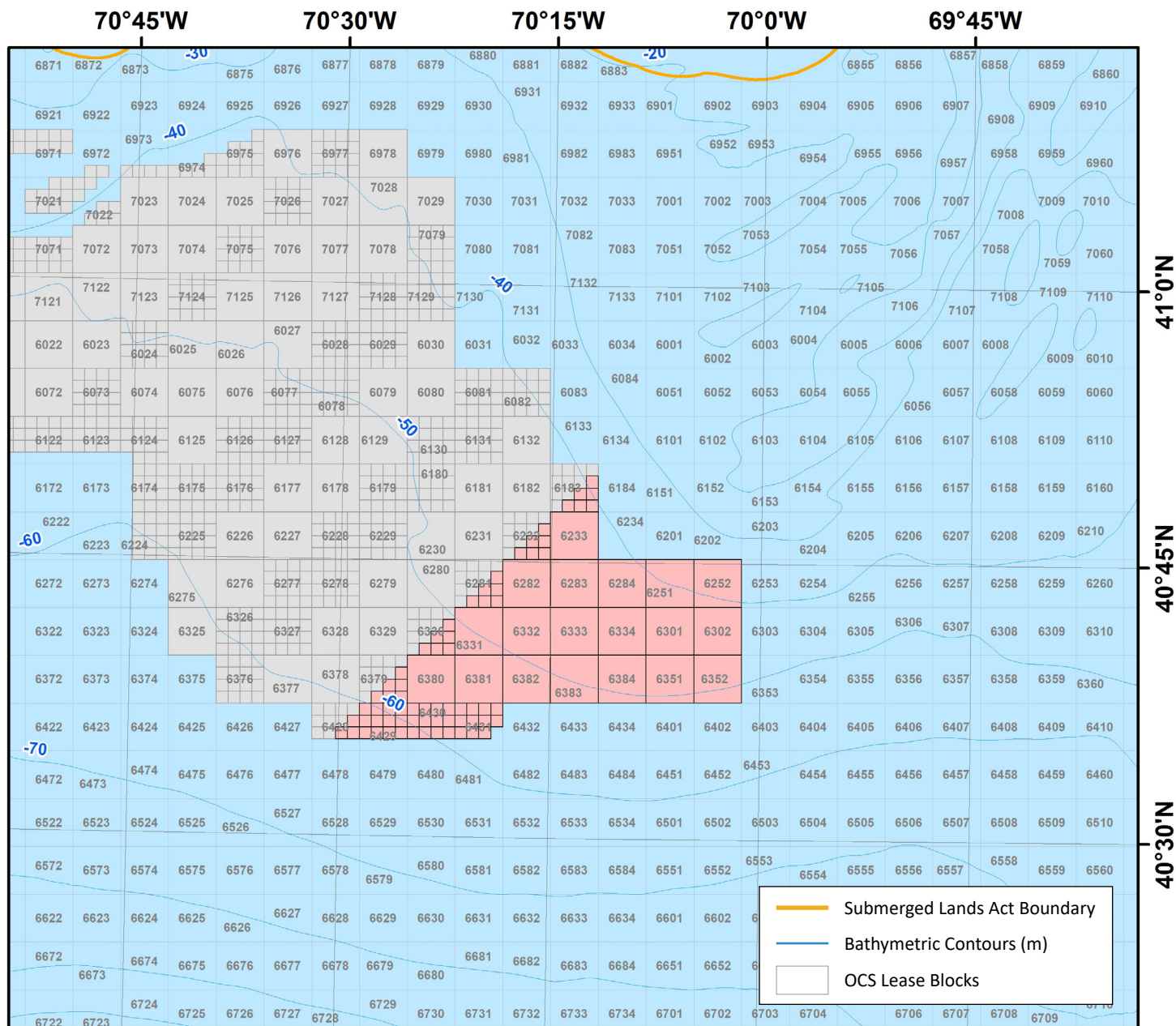
Acres: 127,388

March 2019 | 7



BOEM





0 5 10 15 20
Nautical Miles

Coordinate System: GCS North American 1983 UTM Zone 19

www.boem.gov/Massachusetts

State: Massachusetts

Lease Number: OCS-A 0522

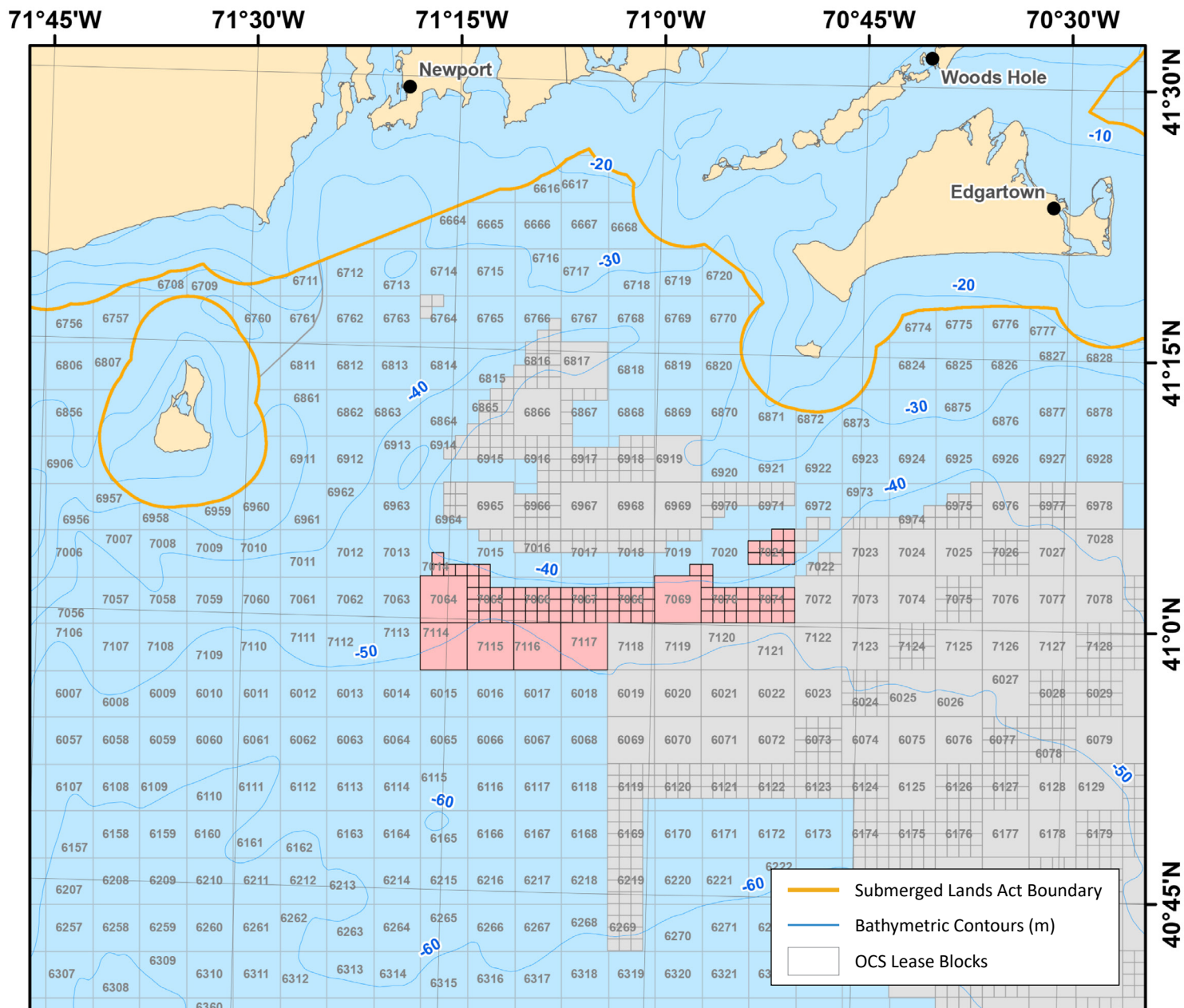
Lessee: Vineyard Wind LLC

Lease Type: Commercial

Lease Date: 4/1/2019

Acres: 132,370





Coordinate System: GCS North American 1983 UTM Zone 19

www.boem.gov/Commercial-Wind-Lease-Rhode-Island-and-Massachusetts

State: Rhode Island/Massachusetts

Lease Number: OCS-A 0487

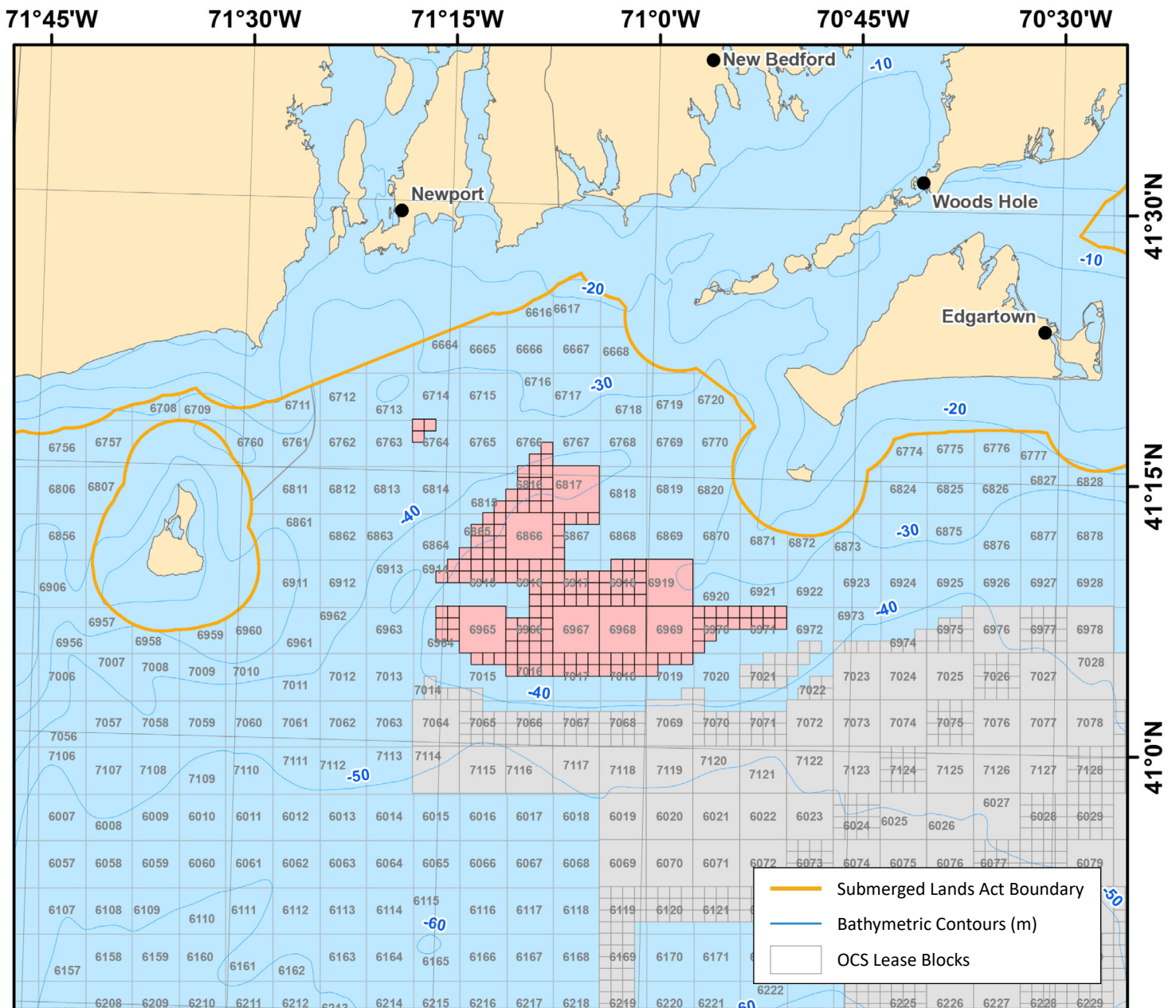
Lessee: Deepwater Wind New England, LLC

Lease Type: Commercial

Lease Date: 10/1/2013

Acres: 67,252





0 5 10 15 20
Nautical Miles

Coordinate System: GCS North American 1983 UTM Zone 19

www.boem.gov/Commercial-Wind-Lease-Rhode-Island-and-Massachusetts

State: Rhode Island/Massachusetts

Lease Number: OCS-A 0486

Lessee: Deepwater Wind New England, LLC

Lease Type: Commercial

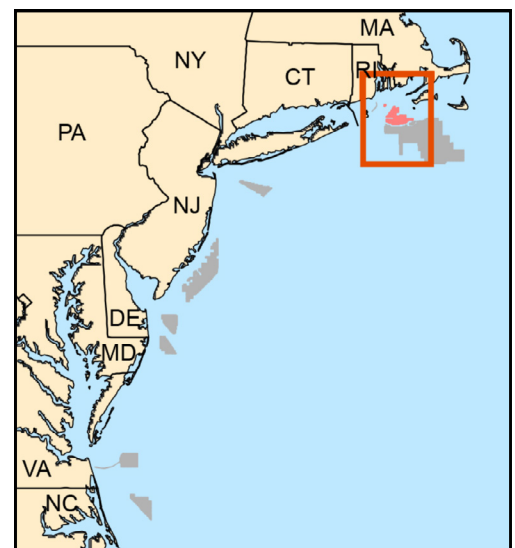
Lease Date: 10/1/2013

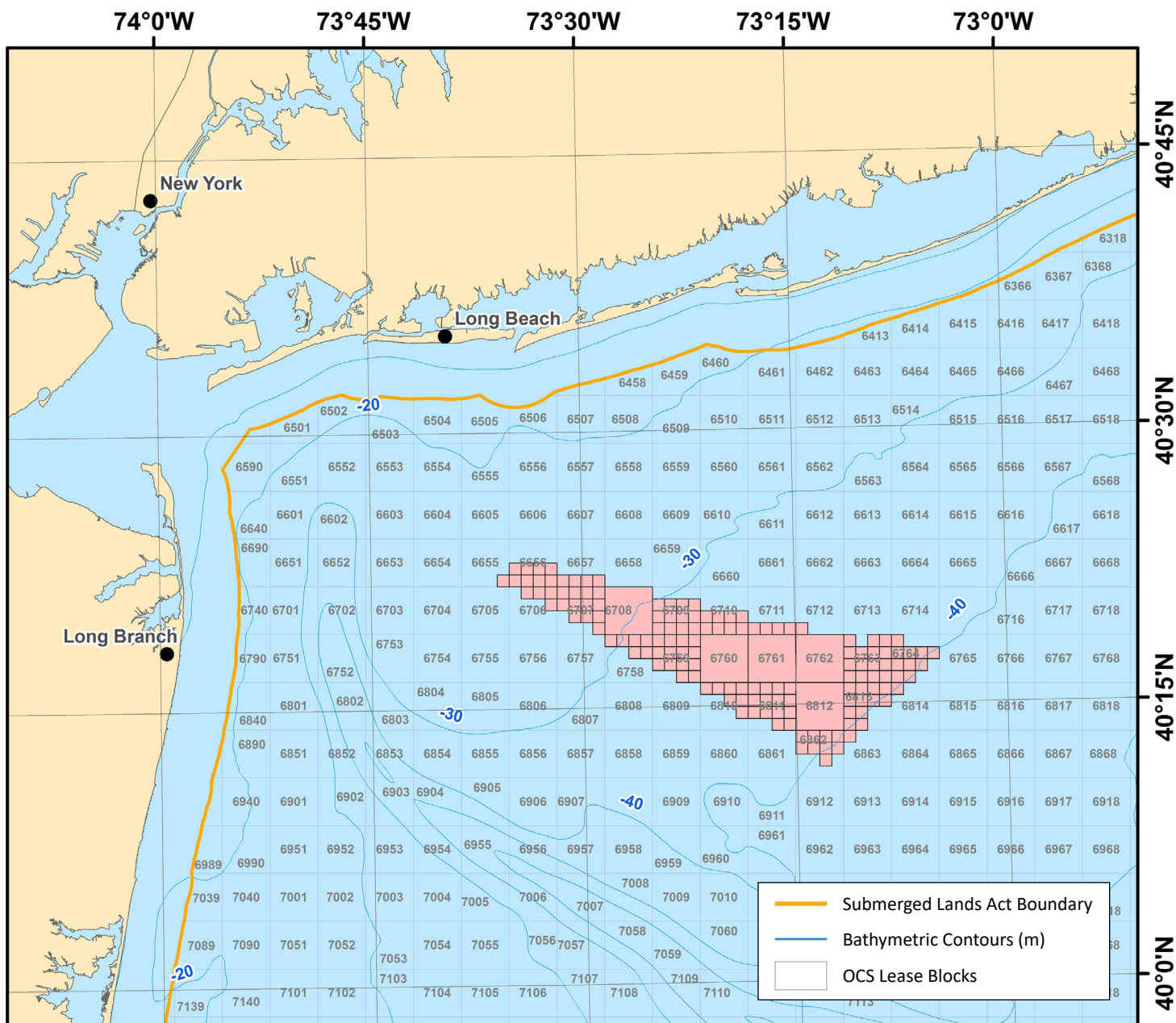
Acres: 97,498

March 2019 | 10



BOEM





Coordinate System: GCS North American 1983 UTM Zone 18

www.boem.gov/New-York/

State: New York

Lease Number: OCS-A 0512

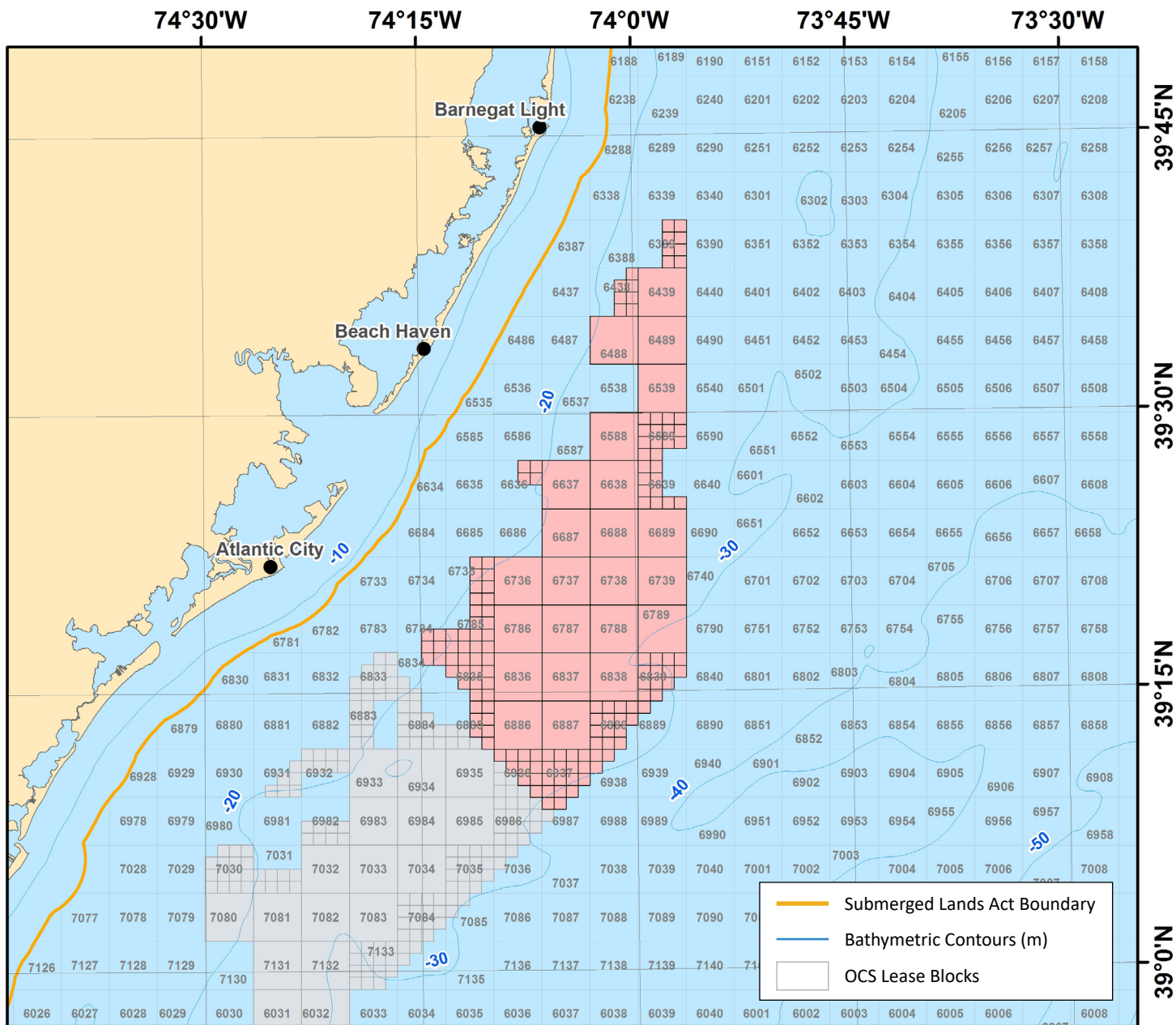
Lessee: Equinor Wind US LLC

Lease Type: Commercial

Lease Date: 4/1/2017

Acres: 79,350





0 5 10 15 20
Nautical Miles

Coordinate System: GCS North American 1983 UTM Zone 18

www.boem.gov/New-Jersey

State: New Jersey

Lease Number: OCS-A 0499

Lessee: EDF Renewables Development, Inc.

Lease Type: Commercial

Lease Date: 3/1/2016

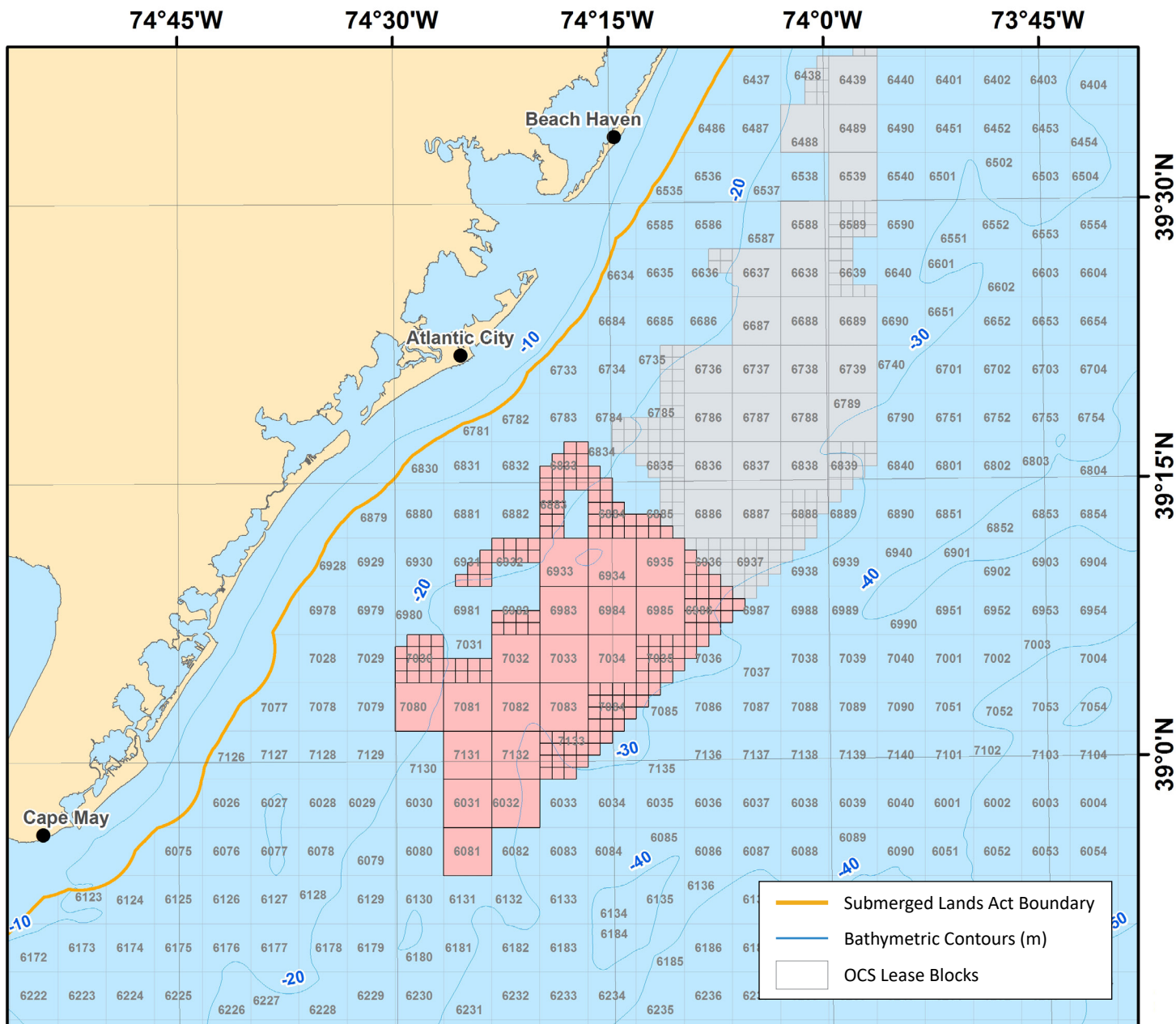
Acres: 183,353

March 2019 | 12



BOEM





0 5 10 15 20
Nautical Miles

Coordinate System: GCS North American 1983 UTM Zone 18

www.boem.gov/New-Jersey

State: New Jersey

Lease Number: OCS-A 0498

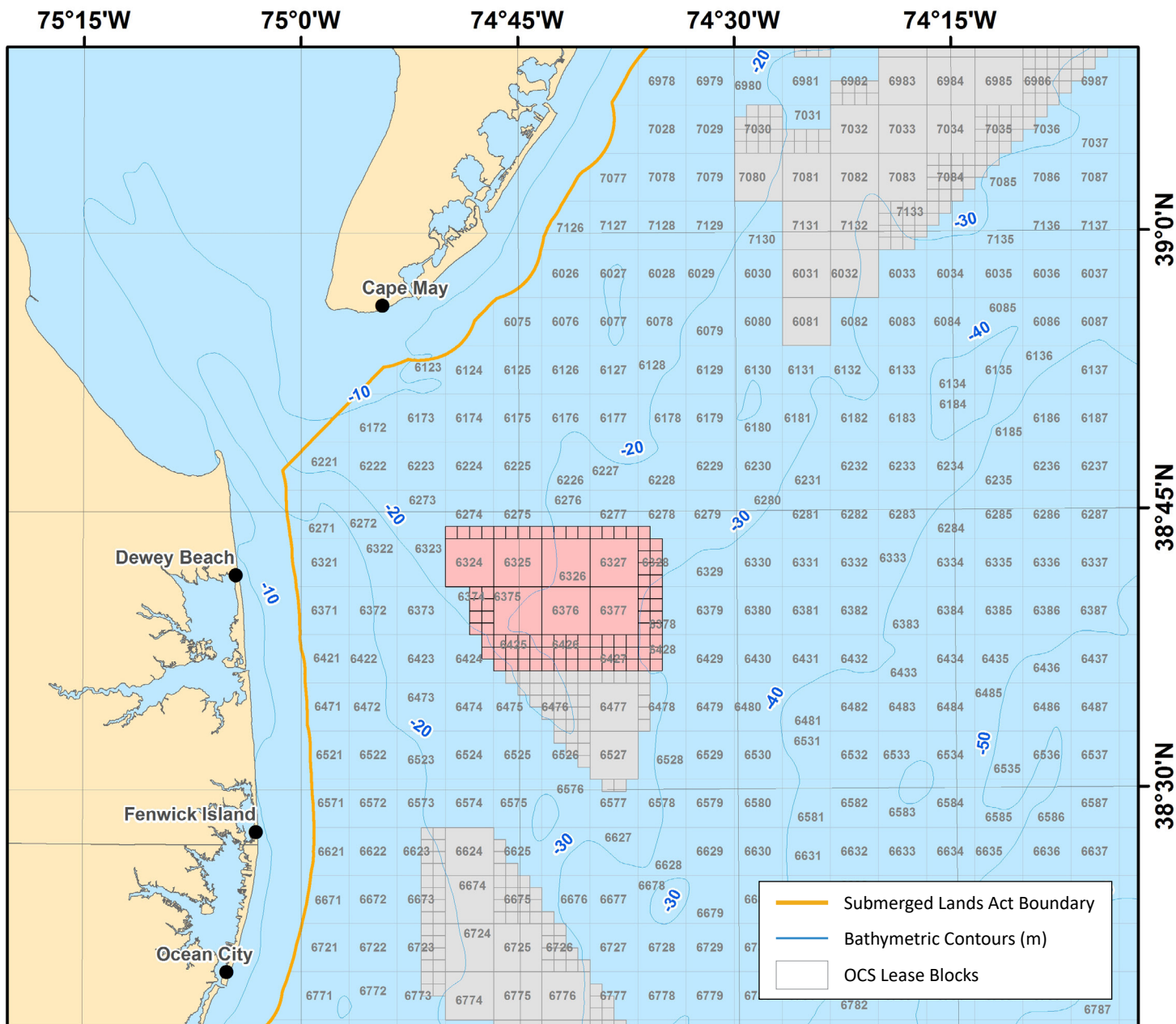
Lessee: Ocean Wind LLC

Lease Type: Commercial

Lease Date: 3/1/2016

Acres: 160,480





0 5 10 15 20
Nautical Miles

Coordinate System: GCS North American 1983 UTM Zone 18

www.boem.gov/Delaware

State: Delaware

Lease Number: OCS-A 0482

Lessee: GSOE I, LLC

Lease Type: Commercial

Lease Date: 12/1/2012

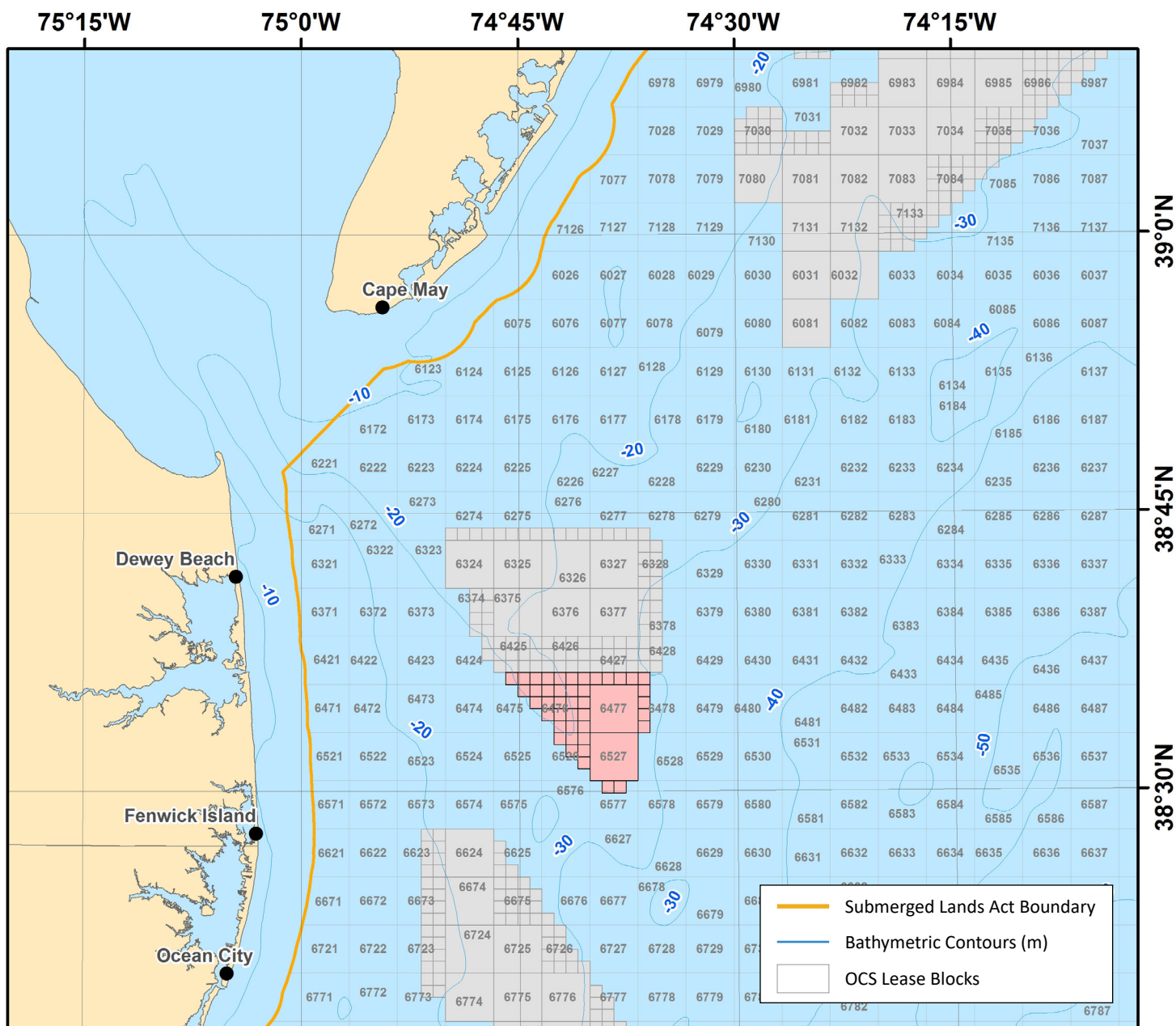
Acres: 70,098

March 2019 | 14



BOEM





0 5 10 15 20
Nautical Miles

Coordinate System: GCS North American 1983 UTM Zone 18

www.boem.gov/Delaware

State: Delaware

Lease Number: OCS-A 0519

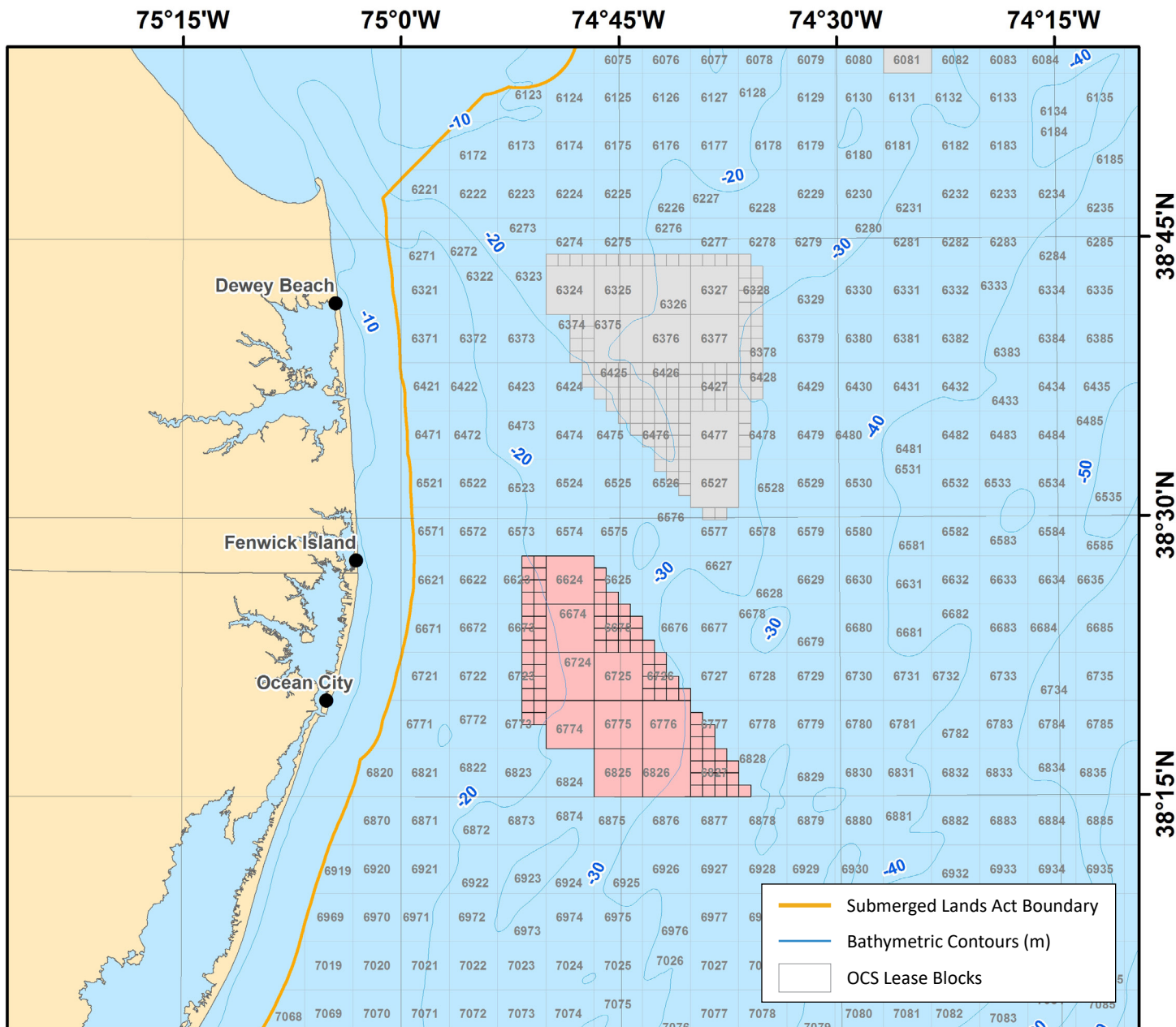
Lessee: Skipjack Offshore Energy, LLC

Lease Type: Commercial

Lease Date: 12/1/2012

Acres: 26,332





0 5 10 15 20
Nautical Miles

Coordinate System: GCS North American 1983 UTM Zone 18

www.boem.gov/Maryland

State: Maryland

Lease Number: OCS-A 0490

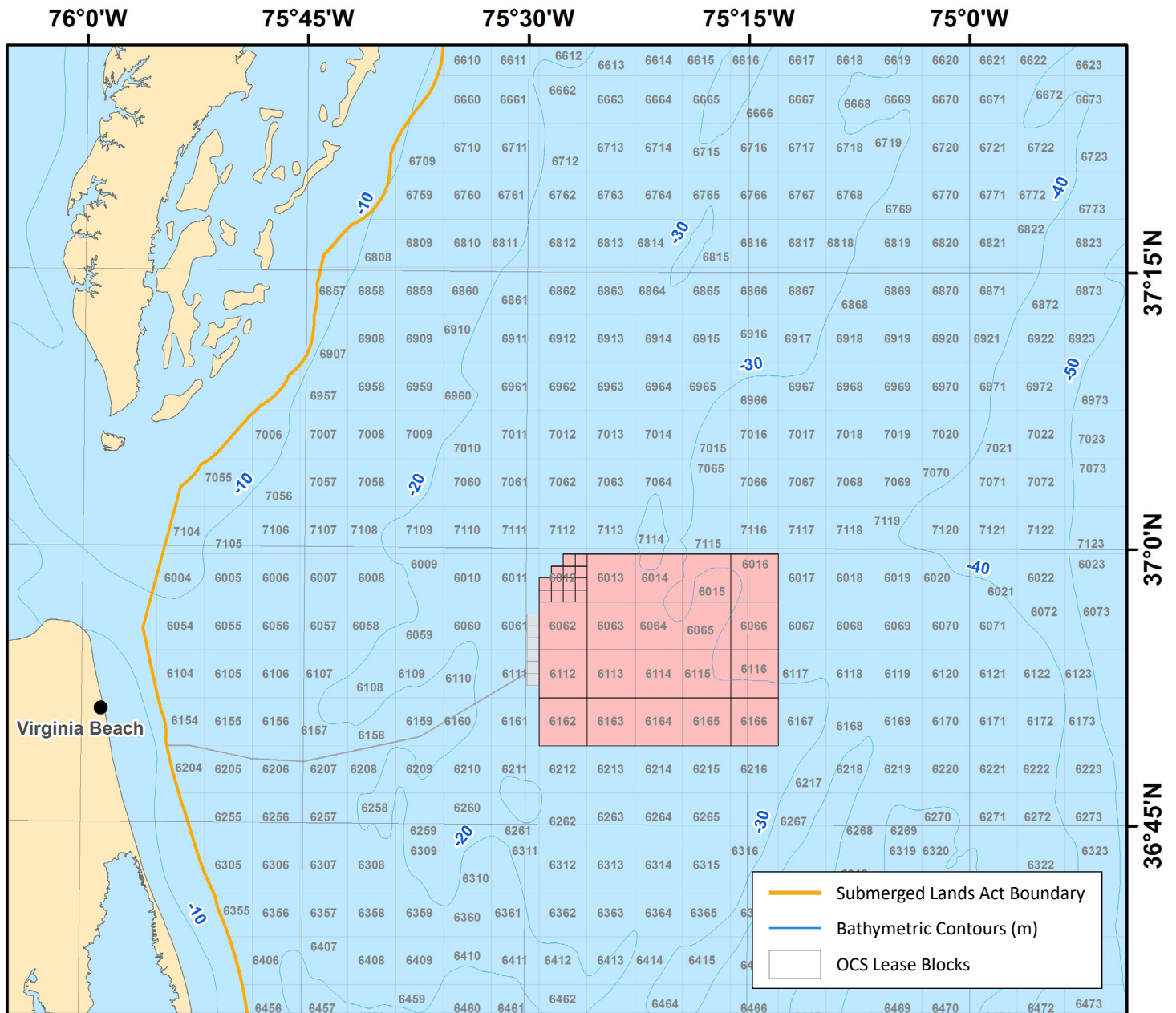
Lessee: US Wind Inc.

Lease Type: Commercial

Lease Date: 12/1/2014

Acres: 79,707





Coordinate System: GCS North American 1983 UTM Zone 18

www.boem.gov/Renewable-Energy-Program/Commercial-Lease-Offshore-VA

State: Virginia

Lease Number: OCS-A 0483

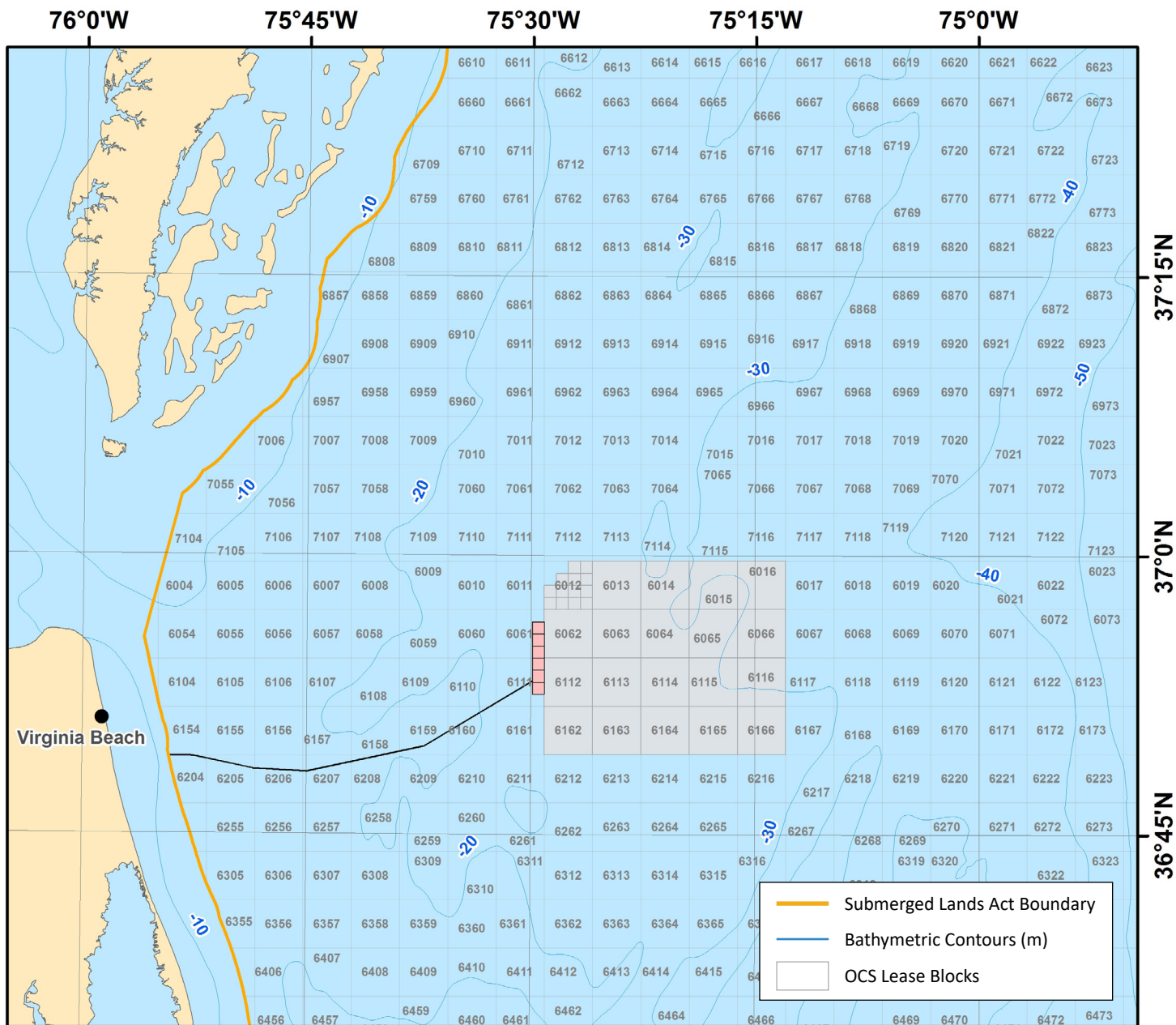
Lessee: Virginia Electric and Power Company

Lease Type: Commercial

Lease Date: 11/1/2013

Acres: 112,799





0 5 10 15 20
Nautical Miles

Coordinate System: GCS North American 1983 UTM Zone 18

www.boem.gov/VOWTAP

State: Virginia

Lease Number: OCS-A 0497

Lessee: Commonwealth of Virginia, Department of Mines, Minerals & Energy

Lease Type: Research

Lease Date: 4/1/2015

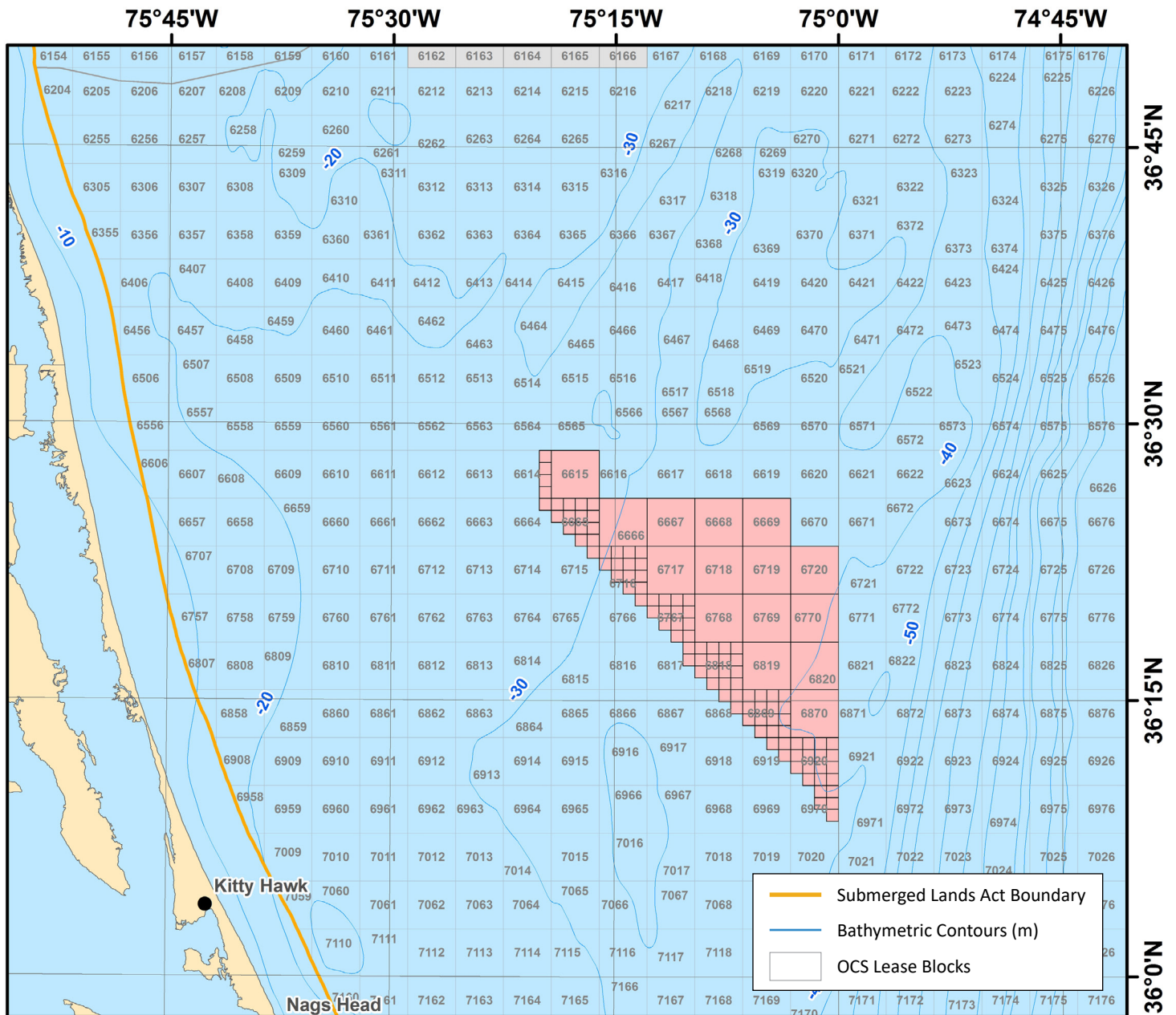
Acres: 2,135

March 2019 | 18



BOEM





Coordinate System: GCS North American 1983 UTM Zone 18

www.boem.gov/North-Carolina/

State: North Carolina

Lease Number: OCS-A 0508

Lessee: Avangrid Renewables, LLC

Lease Type: Commercial

Lease Date: 11/1/2017

Acres: 122,405

March 2019 | 19



BOEM

