

Florida Renewable Energy Task Force

Offshore Renewable Energy Development and Defense Mission Compatibility on the Outer Continental Shelf



Fred Engle
Associate Director, Energy & Mission Compatibility
ODASD - Readiness
Office of the Secretary of Defense

frederick.c.engle.civ@mail.mil

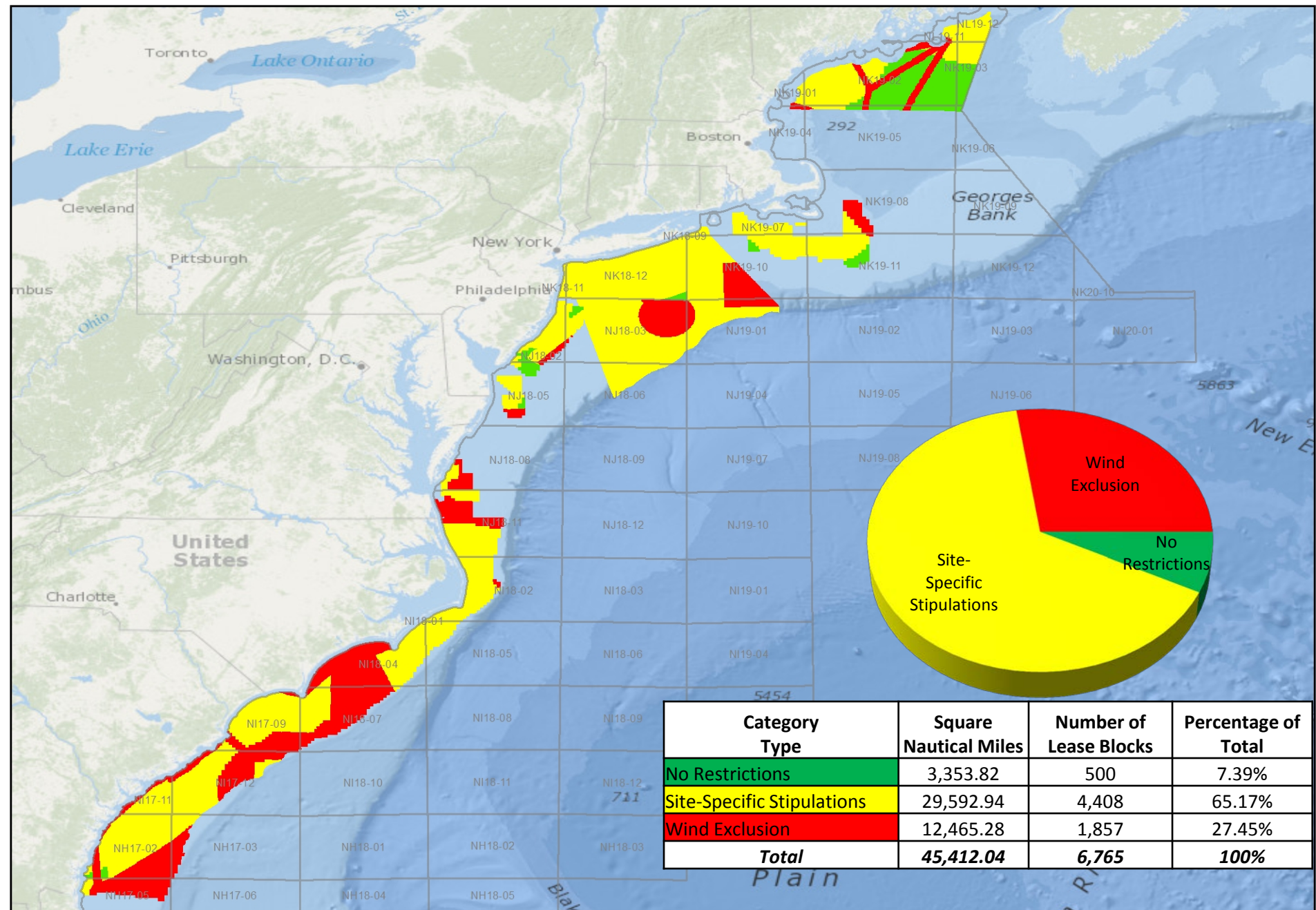
703-693-3478



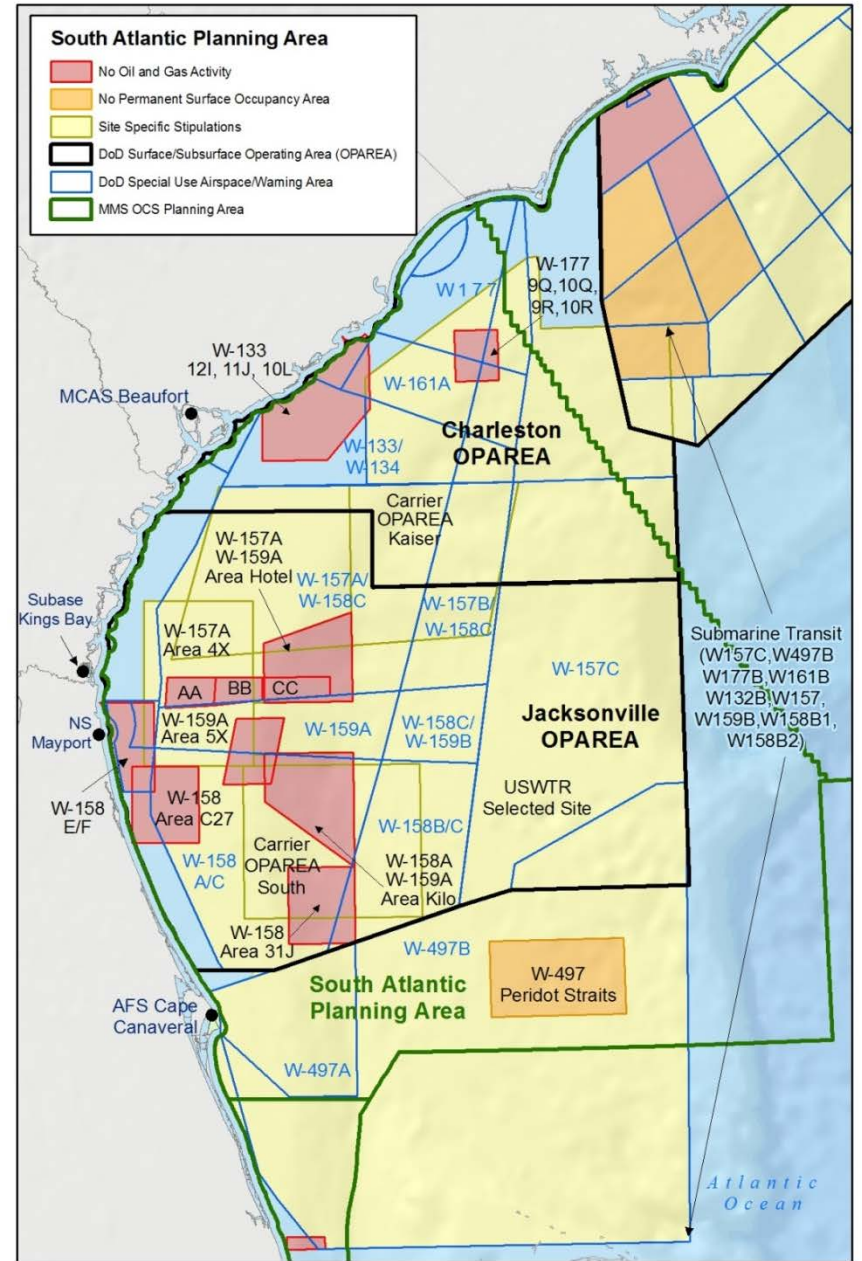
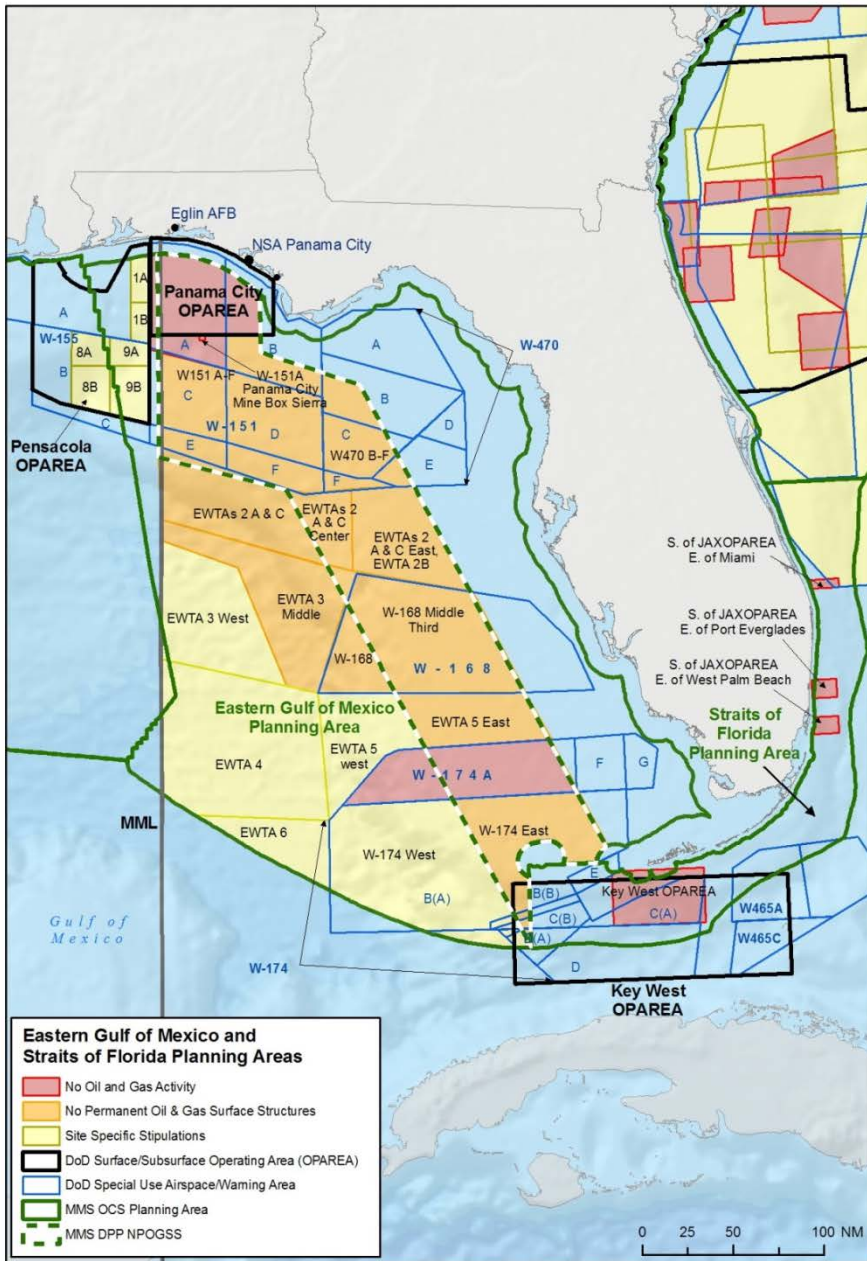
Methodology – Offshore Wind

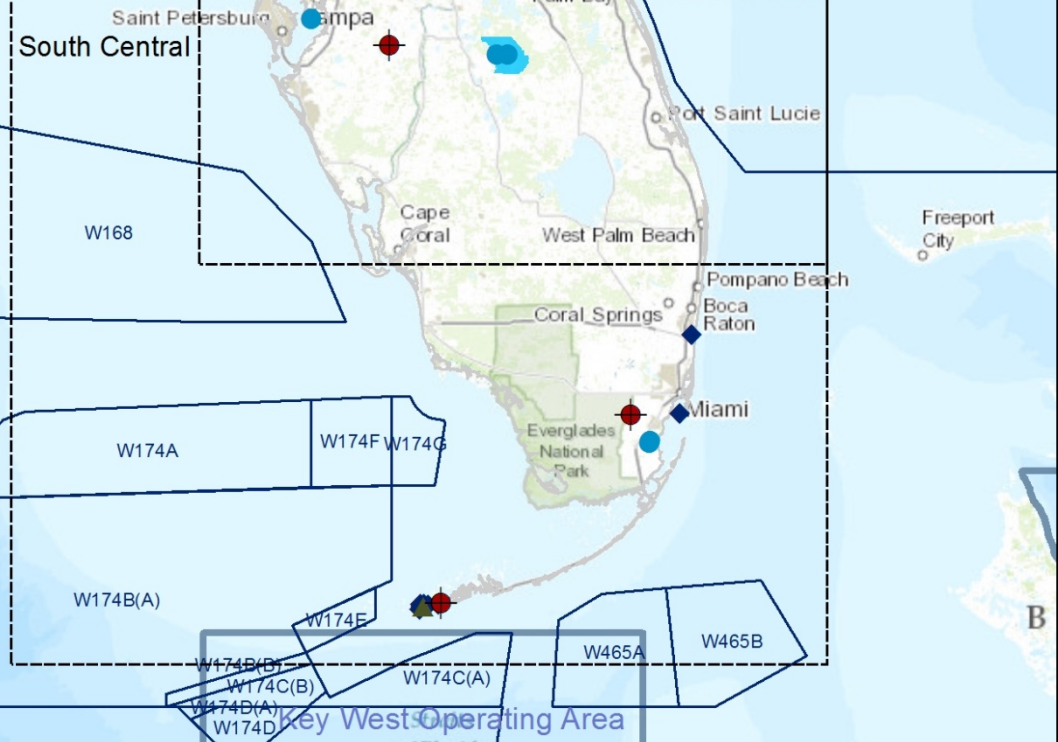
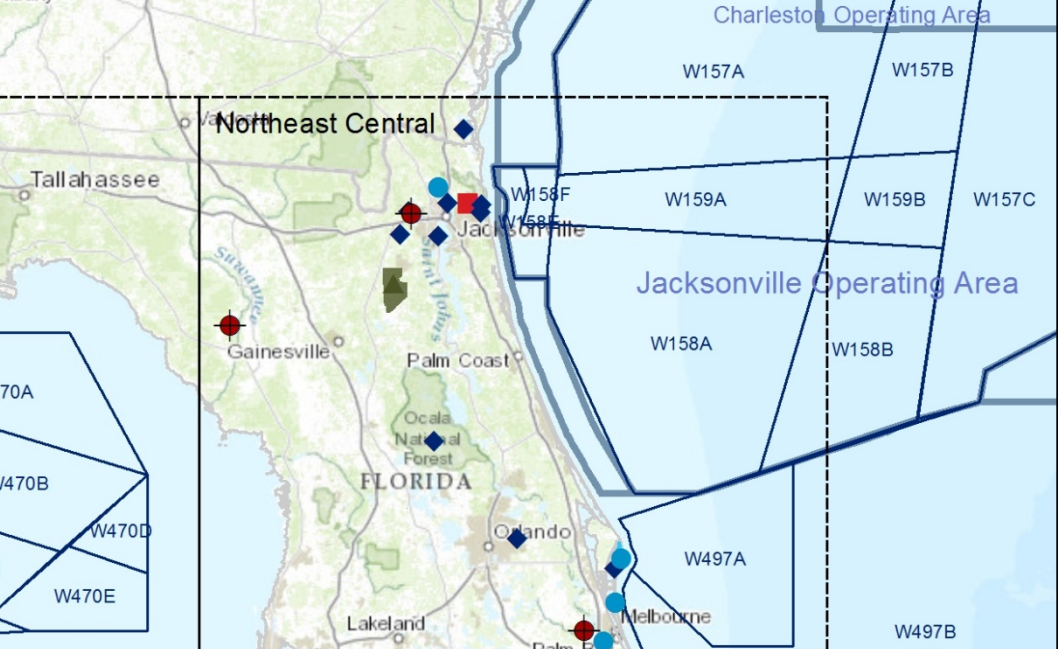
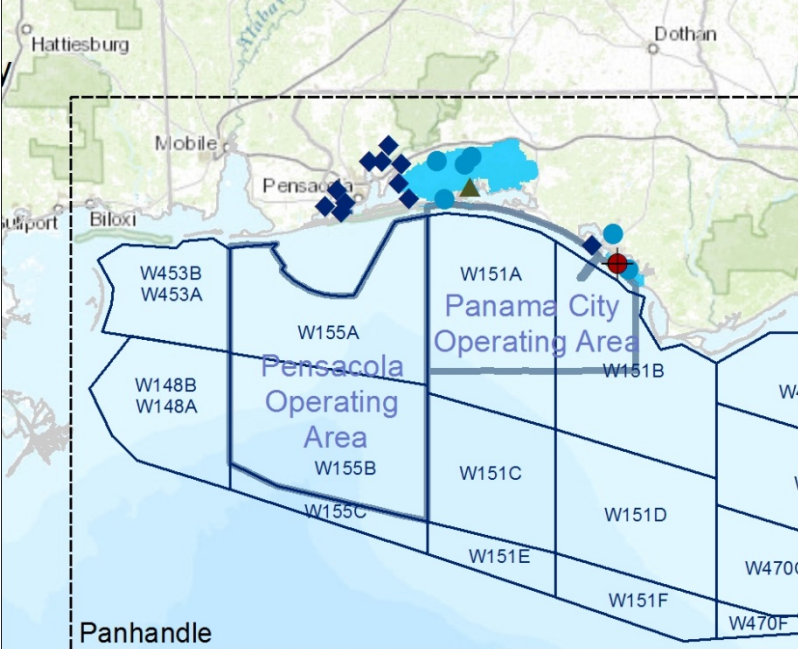
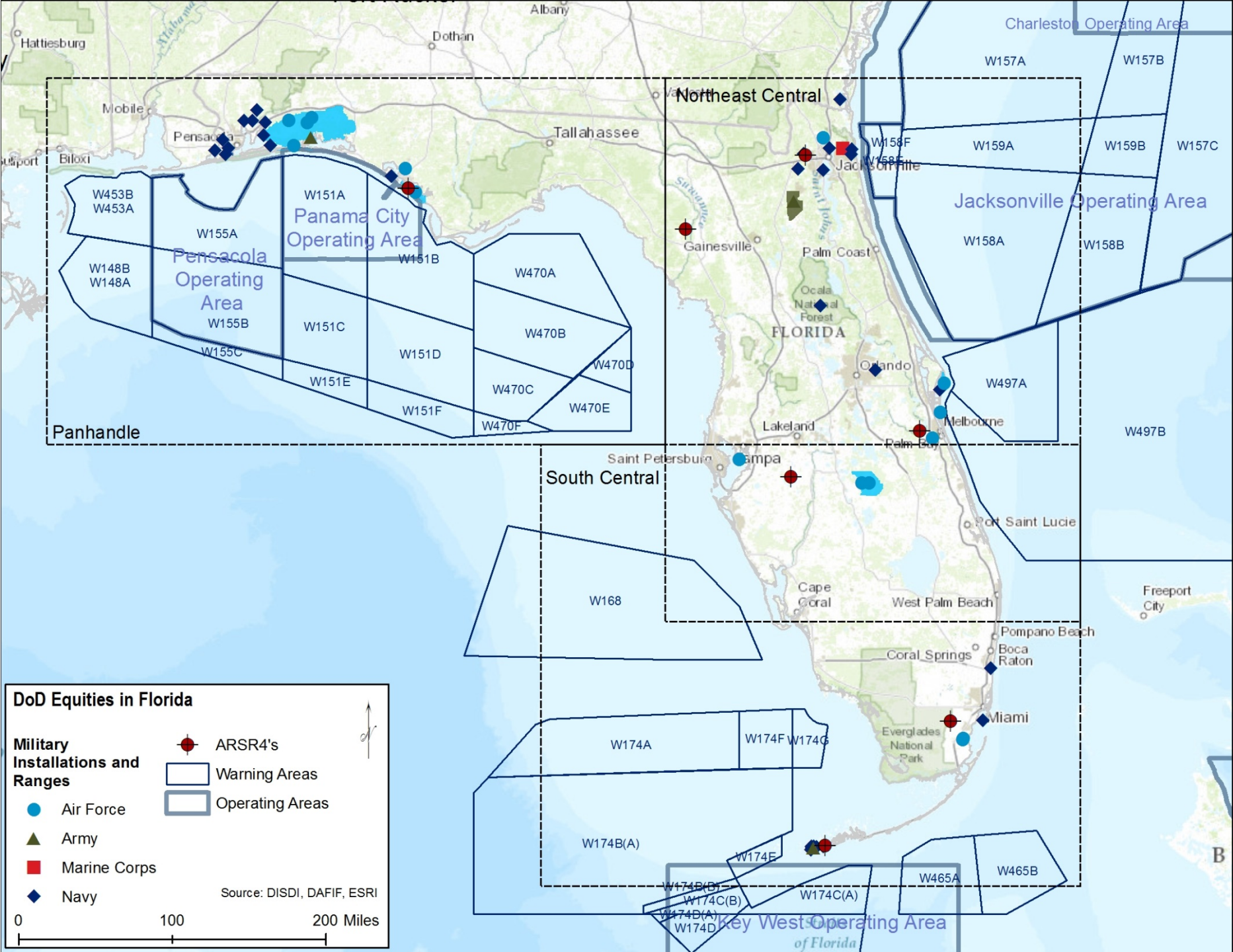
- **Categorize DoD offshore equities and potential wind energy development using:**
 1. **Unrestricted**
 2. **Site Specific Stipulations**
 3. **Wind Energy Exclusion Area**
- **DoD Operating Areas (OPAREAs), warning areas, and radar line-of-sight ranges overlaid on BOEM lease block grid**
- **Extensive analysis and coordination process with the military services**

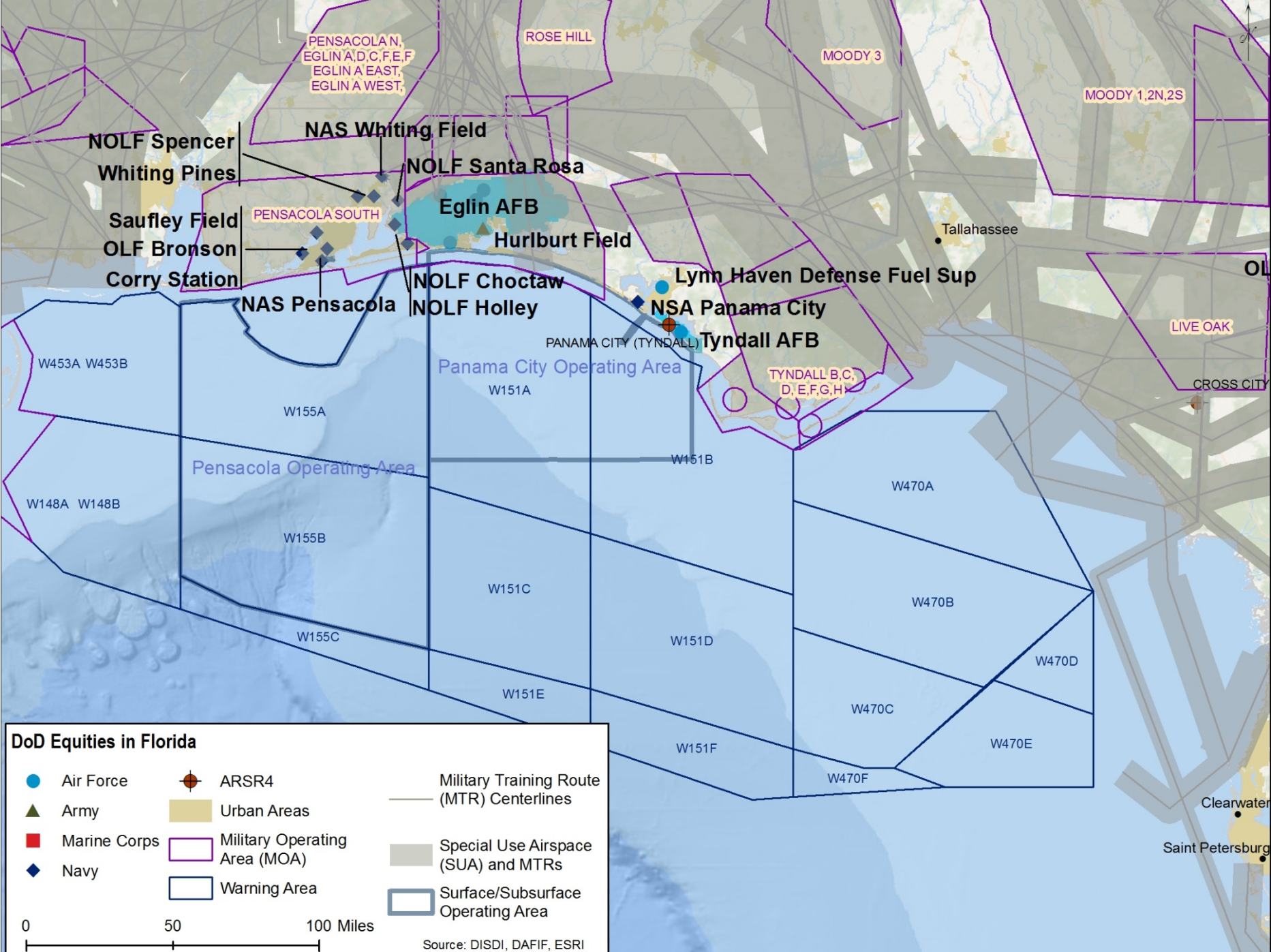
DoD Atlantic Offshore Wind Energy Mission Compatibility Assessments



DoD Mission Compatibility Assessment for Offshore Oil & Gas - 2010







PENSACOLA N,
EGLIN A,D,C,F,E,F
EGLIN A EAST,
EGLIN A WEST,

ROSE HILL

MOODY 3

MOODY 1,2N,2S

NOLF Spencer
Whiting Pines
Saufley Field
OLF Bronson
Corry Station

NAS Whiting Field
NOLF Santa Rosa

PENSACOLA SOUTH

Eglin AFB
Hurlburt Field

Tallahassee

NOLF Choctaw
NOLF Holley

Lynn Haven Defense Fuel Sup

OL

LIVE OAK

CROSS CITY

W453A W453B

Panama City Operating Area

NSA Panama City
Tyndall AFB

PANAMA CITY (TYNDALL)

TYNDALL B,C,
D,E,F,G,H

W155A

W151A

W151B

W470A

W148A W148B

Pensacola Operating Area

W155B

W151C

W470B

W155C

W151D

W470D

W151E

W470C

W470E

W151F

W470F

DoD Equities in Florida

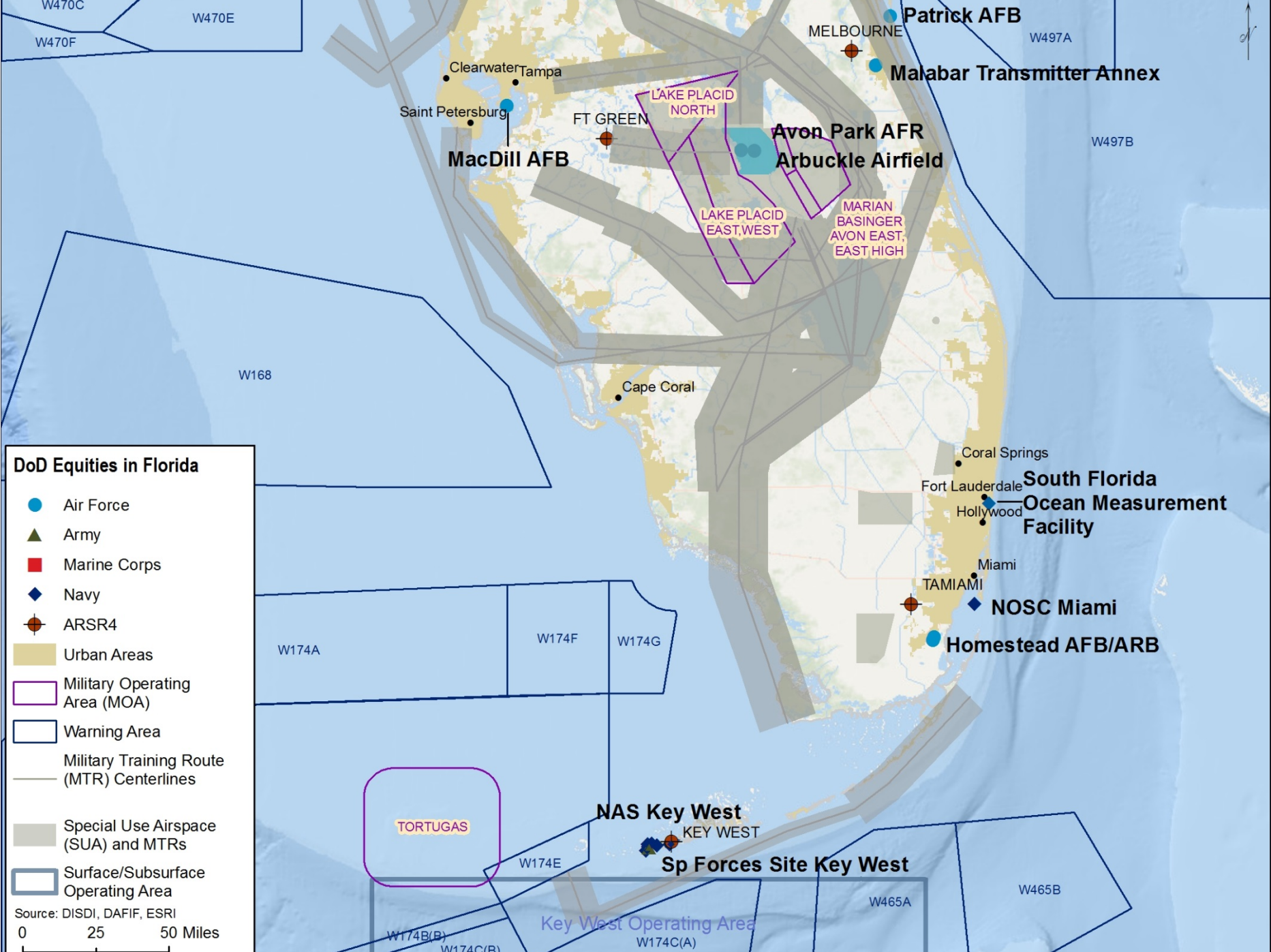
Air Force	ARSR4	Military Training Route (MTR) Centerlines
Army	Urban Areas	Special Use Airspace (SUA) and MTRs
Marine Corps	Military Operating Area (MOA)	Surface/Subsurface Operating Area
Navy	Warning Area	

0 50 100 Miles

Source: DISDI, DAFIF, ESRI

Clearwater

Saint Petersburg



DoD Equities in Florida

- Air Force
- ▲ Army
- Marine Corps
- ◆ Navy
- ⊙ ARSR4
- Urban Areas
- Military Operating Area (MOA)
- Warning Area
- Military Training Route (MTR) Centerlines
- Special Use Airspace (SUA) and MTRs
- Surface/Subsurface Operating Area

Source: DISDI, DAFIF, ESRI
 0 25 50 Miles

Clearwater
 Tampa
 Saint Petersburg
MacDill AFB

FT GREEN
 LAKE PLACID NORTH
Avon Park AFR
Arbuckle Airfield

MELBOURNE
Patrick AFB
Malabar Transmitter Annex

LAKE PLACID EAST, WEST
 MARIAN BASINGER AVON EAST, EAST, HIGH

Cape Coral

Coral Springs
 Fort Lauderdale
South Florida Ocean Measurement Facility
 Hollywood

Miami
NOSC Miami
Homestead AFB/ARB

TORTUGAS

NAS Key West
 KEY WEST
Sp Forces Site Key West

Key West Operating Area

W470C
 W470E
 W470F

W497A
 W497B

W168

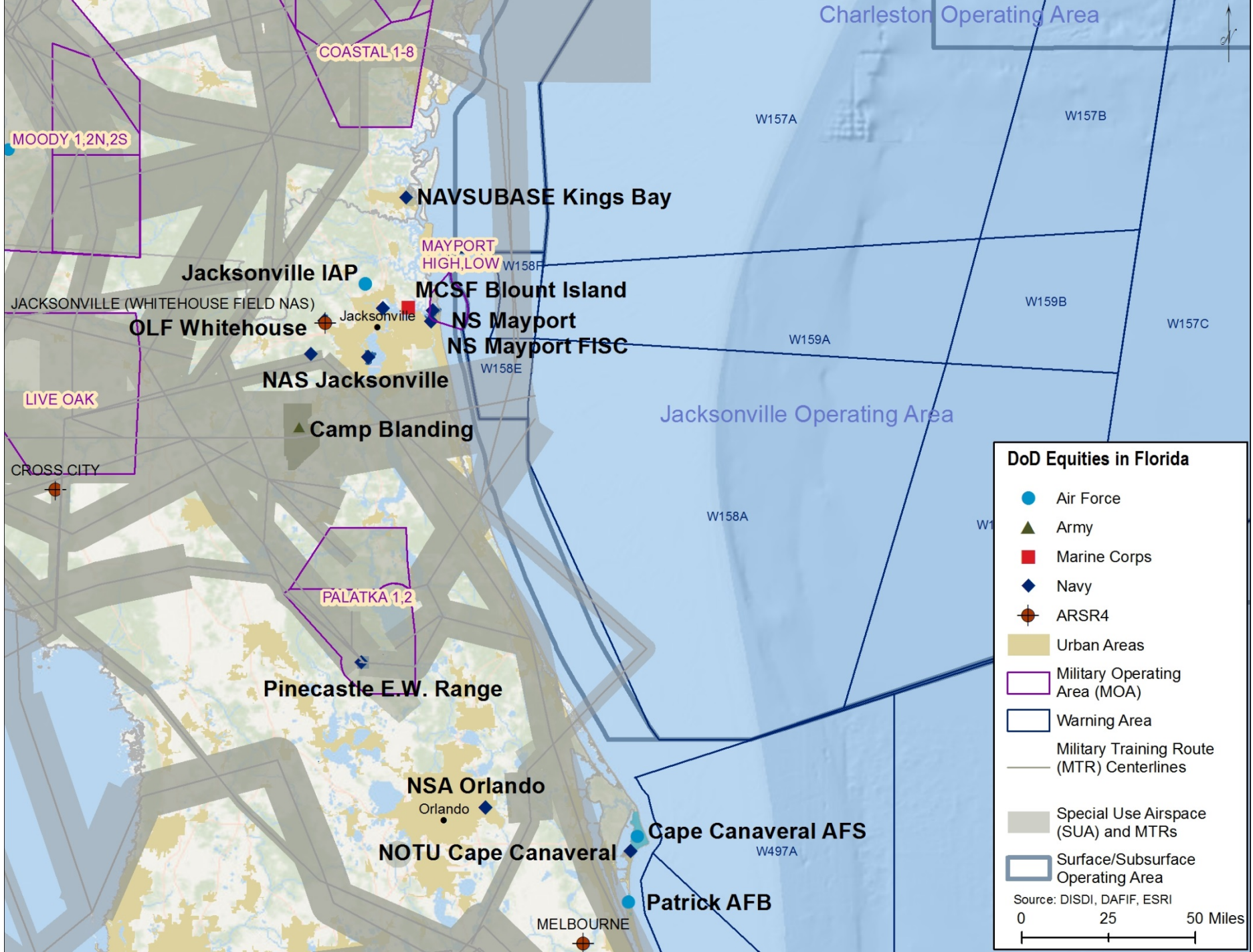
W174A
 W174F
 W174G

W174E

W465A
 W465B

W174B(B)
 W174C(B)
 W174C(A)





COASTAL 1-8

MOODY 1,2N,2S

◆ NAVSUBASE Kings Bay

MAYPORT HIGH,LOW

Jacksonville IAP

MCSF Blount Island

JACKSONVILLE (WHITEHOUSE FIELD NAS)

OLF Whitehouse

Jacksonville

◆ NS Mayport

NS Mayport FISC

◆ NAS Jacksonville

▲ Camp Blanding

LIVE OAK

CROSS CITY

PALATKA 1,2

◆ Pinecastle E.W. Range

◆ NSA Orlando

Orlando

◆ NOTU Cape Canaveral

◆ Cape Canaveral AFS

◆ Patrick AFB

MELBOURNE

Charleston Operating Area

W157A

W157B

W158F

W159B

W157C

W159A

Jacksonville Operating Area

W158A

W158B

W497A