

BOEM's Regulatory Role and Responsibilities

Tracy Logan

Renewable Energy Specialist
Pacific Outer Continental Shelf Region
Bureau of Ocean Energy Management

December 3, 2014



- **BOEM Authority, Jurisdiction and Responsibilities**
- **BOEM Right-of-Way (ROW) Grant Overview**
- **Selected Studies**
- **Potential Impacts from Undersea Cables**
- **Collaboration**
- **Example: Block Island Transmission System ROW**



Bureau within the Department of the Interior

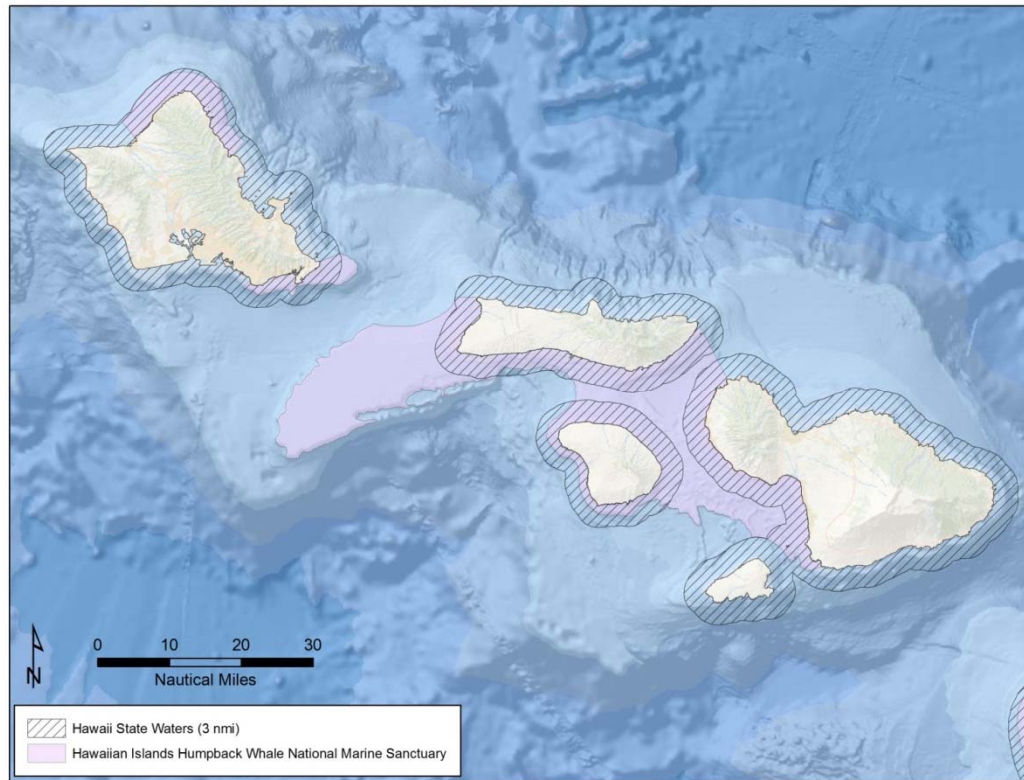
- Oversee development of the nation's oil and gas, renewable energy and other mineral and energy resources on the Outer Continental Shelf (OCS)

Energy Policy Act of 2005 amended the OCS Lands Act, granting BOEM authority to issue:

- Leases, easements and ROWs on the OCS for activities that support production, transportation or transmission of *renewable energy*



OCS is typically defined as all submerged lands seaward of state waters



BOEM has no authority to issue a lease or ROW grant within:

- National Park System
- National Wildlife Refuge System
- National Marine Sanctuary System
- Any National Monument



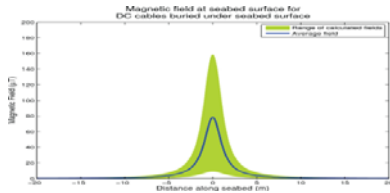
BOEM is required to:

- Coordinate with relevant federal agencies and affected state and local governments
- Obtain fair return for leases and grants issued
- Ensure that renewable energy development takes place in a safe and environmentally-responsible manner



1. ROW grant request submitted by Applicant
2. Request for Interest published in Federal Register
3. Competitive interest determination by BOEM
4. General Activities Plan submitted
5. Environmental and technical reviews and coordination conducted
6. BOEM ROW grant decision





← *Effects of EMFs from Undersea Power Cables on Elasmobranchs and Other Marine Species*



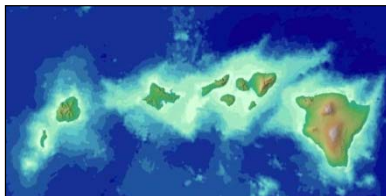
← *Offshore Electrical Cable Burial for Wind Farms: State of the Art, Standards and Guidance & Acceptable Burial Depths, Separation Distances and Sand Wave Effect*



← *Maritime Cultural Resources Site Assessment in the Main Hawaiian Islands*



← *Marine Biogeographic Assessment of the Main Hawaiian Islands*



← *Pacific Regional Ocean Uses Atlas*



- Water column turbidity, sediment disturbance and dispersal
- Localized disturbance to benthic environment
- Possible marine mammal noise and other effects
- EMF impacts to sensitive fish species
- Disturbance of culturally or historically significant sites
- Disturbance along cable corridor during construction
- Impacts to harbor operations, local marine transportation and military operations

*Not an exhaustive list.



BOEM/Hawaii Intergovernmental Renewable Energy Task Force

- Facilitates coordination among all agencies: state, federal, local

Partnerships

- Scientific: Hawaiian Islands Humpback Whale National Marine Sanctuary, NOAA, USGS, DOE
- Collaboration with federal, state and local agencies, Native Hawaiians and stakeholders



In 2011 BOEM received an unsolicited request for a ROW grant on the OCS offshore Rhode Island

- Applicant: Deepwater Wind Block Island Transmission System, LLC
- Bi-directional 34.5 kV submerged transmission cable
- 8 nmi, 200-ft-wide corridor
- Export power from proposed 30 MW offshore wind project in state waters adjacent to Block Island
- May also supply electricity from existing transmission grid on Rhode Island mainland to Block Island



Pacific Region Point of Contact



Tracy Logan

Renewable Energy Specialist
Pacific OCS Region
Bureau of Ocean Energy Management
805.384.6351
Tracy.Logan@boem.gov

For more information please visit:
www.boem.gov/pacific-region

