



# *Offshore Renewable Energy*

*Interactive Session*  
*SC Data Portal*



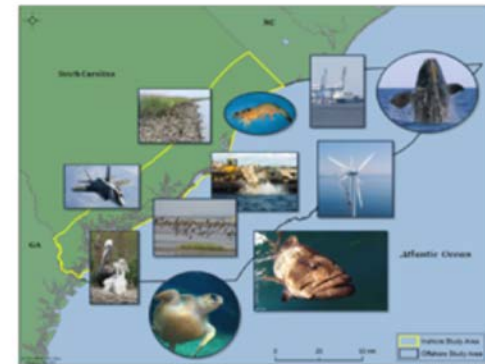
# Coastal & Marine Spatial Planning

- EPA Act 2005 Section 388:
  - “establish an Outer Continental Shelf (OCS) Digital Mapping Initiative to assist in decision making related to alternative energy uses on the OCS”
- BOEM
  - Funded the development of a Multipurpose Marine Cadastre ([www.MarineCadastre.gov](http://www.MarineCadastre.gov))
    - an integrated marine information system that provides legal, physical, ecological, and cultural information in a common GIS framework
  - Partnering with NOAA (the technical lead) to ensure success

# Coastal & Marine Spatial Planning

- Initial data sets
- Live feeds allow for continuous updates

## Final Report A Comprehensive Spatial Mapping Effort of South Carolina's Coastal Resources and Activities



Submitted To:  
South Carolina Energy Office  
1200 Senate Street  
408 Wade Hampton Building  
Columbia, SC 29201

Submitted By:  
R.F. Van Dolah, J.B. Boynton, K.S. Schulte, J.C. Felber  
South Carolina Department of Natural Resources  
Marine Resources Research Institute  
P.O. Box 12559  
Charleston, SC 29412

2011

# Key Stakeholder Issues

- Commercial fishing
- Viewshed
- Port access
- Navigation and safety
- Archaeological and cultural sites
- Historic sites and places
- Protected species (marine mammals, birds, turtles)
- Migratory birds
- Sensitive offshore habitats (e.g., cold water corals and essential fish habitats)
- DOD and NASA offshore training & exercise areas

Renewable Energy Programs

- ▶ [Regulatory Framework and Guidelines](#)
- ▶ [Lease and Grant Information](#)
- ▶ [Stakeholder Engagement](#)
- ▶ [State Activities](#)

- [California and Washington](#)
- [Delaware](#)
- [Florida](#)
- [Georgia](#)
- [Hawaii](#)
- [Maine](#)
- [Maryland](#)
- [Massachusetts](#)
- [New Jersey](#)
- [New York](#)
- [North Carolina](#)
- [Oregon](#)
- [Rhode Island](#)
- [South Carolina](#)
- [Virginia](#)



Home | [Renewable Energy Programs](#) | [State Activities](#)

## South Carolina Activities

BOEM has established a South Carolina Renewable Energy Task Force to assist government decision-making within the umbrella of the established BOEM regulatory framework regarding renewable energy leasing and development on the OCS off the coast of South Carolina. Membership of the BOEM South Carolina Task Force is wholly governmental and includes representatives from federal, state, local and tribal governments. The goal is to facilitate intergovernmental communications regarding OCS renewable energy activities.



The first in-person BOEM South Carolina Renewable Energy Task Force meeting was held March 29, 2012 from 9:00 a.m. to 3:00 p.m. in Charleston, South Carolina at the Berkeley-Charleston-Dorchester Council of Governments. A public Q&A session followed at the close of the intergovernmental meeting. Materials from this first Task Force meeting are below:

- [Meeting Agenda](#)
- [South Carolina Energy Office Overview of South Carolina Offshore Wind Initiatives](#)
- [BOEM Overview of OCS Renewable Energy Leasing Process](#)
- [South Carolina Department of Natural Resources Marine Resources Research Institute Overview of the South Carolina Spatial Mapping Effort and Final Report](#)
- [Initial Identification of Prominent Existing OCS Uses: Discussion of BOEM Vessel Traffic Analysis](#)
- [Initial Identification of Prominent Existing OCS Uses: Discussion of DoD Assessment](#)
- [South Carolina Renewable Energy Task Force Viewer](#)

The next task force meeting is scheduled for May 16, 2014, at the Clemson University BOEM Foundation Center in North Charleston, SC. [South Carolina Renewable Energy Task Force Viewer](#)

To meet the needs of the offshore renewable energy and marine planning communities BOEM has worked with its Intergovernmental South Carolina Renewable Energy Task Force to develop a map [available here](#) through MarineCadastre.gov. [Marinecadastre.gov](#) is a joint online mapping project of BOEM and the National Oceanic and Atmospheric Administration that includes many of the data layers used in the planning process.

# ArcGIS - South Carolina Offshore Renewable Energy Planning

MODIFY MAP [Sign In](#)

Details | Basemap

Share | Print | Measure | Find address or place



## Legend

Energy Resources

- Solar
- Wind
- All other values

## BOEM Layers

Outer Continental Shelf Lease Blocks



BOEM Wind Planning Area

- Maine DNCI
- Massachusetts WEA
- New York RFI
- New Jersey Call Area / WEA
- Maryland Call Area / WEA
- North Carolina Call Area

## SCDNR Layers

Habitat

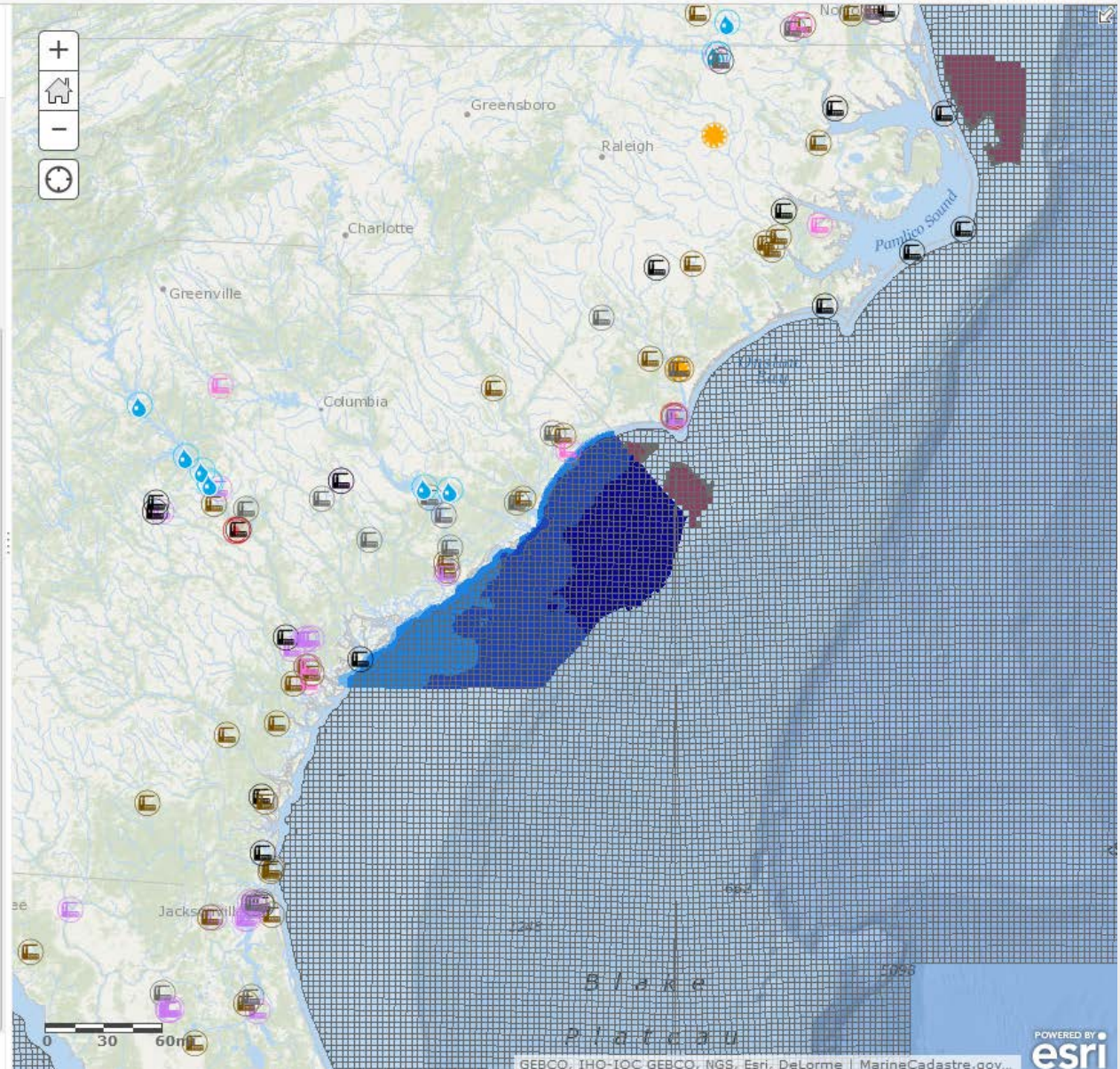
WindSpeeds

Wind\_spd100

- 6.8 - 7
- 7.1 - 7.5
- 7.6 - 8
- 8.1 - 8.5
- 8.6 - 9

Wind\_pwr100

- 354 - 400
- 401 - 500
- 501 - 600
- 601 - 700
- 701 - 800



Lets go there now.....