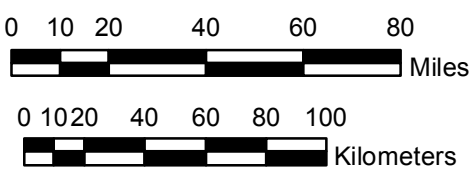


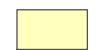





Distance & Direction to Nearest 2D Line

Barrow	90 miles (ENW)
Wainwright	60 miles (NW)
Point Lay	57 miles (NW)
Point Hope	123 miles (N)
Kotzebue	240 miles (NNW)



Scale: 1:2,500,000

-  Proposed 2D Lines: 3,711.27 mi (5,972.72 km)
-  OCS Official Protraction Diagrams
-  OCS Lease Blocks (Active)
-  BOEM Planning Areas
-  World Exclusive Economic Zones
-  Alaska Borough Boundaries

CHUKCHI SEA 2D 2013

