



United States Department of the Interior

BUREAU OF OCEAN ENERGY MANAGEMENT

Alaska OCS Region

3801 Centerpoint Drive, Suite 500

Anchorage, Alaska 99503-5823

April 2013

DATA ANNOUNCEMENT

Outer Continental Shelf Permits 82-60

MULTI-CHANNEL SEISMIC REFLECTION DATA CHUKCHI SEA - ALASKA

Background

From August 10, 1982 until October 8, 1982, Western Geophysical Company acquired approximately 4050 line miles of multi-channel, 2-D seismic reflection data on the Federal outer continental shelf (OCS) in the Chukchi Sea area. These data were collected under Permit 82-60 issued by the Minerals Management Service (MMS) on May 10, 1982. Under the conditions of the Permit, contract, and subsequent regulations, copies of the OCS portions of the data acquired by the MMS are now available to the public. The Bureau of Ocean Energy Management (formerly MMS) will make these data available to the public through the U. S. Geological Survey and the National Archive of Marine Seismic Surveys web site (<http://walrus.wr.usgs.gov/NAMSS/>).

Acquisition method: Seismic data were collected using airguns as the energy source in multi-arrays of 20 or 27 guns towed at a depth of 20 feet using a towed streamer at a depth of 40 feet. The shot point interval was 82 feet.

Navigation: Winns Phase V System integrated with ARGO positioning.

Processing: Processing sample interval is 4 ms. with automatic gain applied for analog sections.

DATA AVAILABLE

Seismic reflection profiles in both stack and migrated sections scanned at 800 dpi and saved as compressed TIFF images.

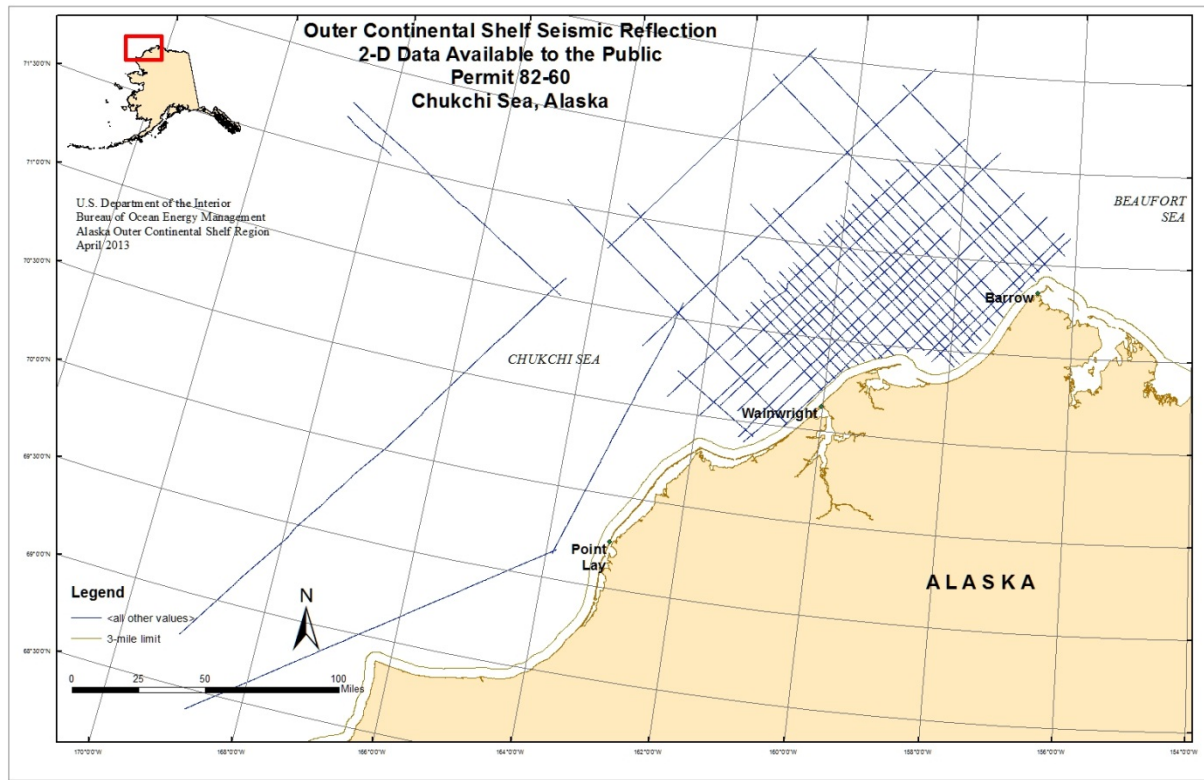
Digital seismic (SEG-Y format) both stack and migrated.

Velocity: Digital data in text file is included. Velocity tables are also shown on the top of the images of the stack seismic profiles. Velocity analyses on paper were received and archived.

Digital navigation data (NAD 83) in ASCII text file.



Data Coverage Permit 82-60



These data will also be available upon request from the National Geophysical Data Center (NGDC), Boulder, Colorado (<http://www.ngdc.noaa.gov/mgg/geodas/geodas.html>) or contact Robin Warnken (Robin.R.Warnken@noaa.gov).

For further information or expressions of interest in acquiring the data please contact:

Susan Banet
 Bureau of Ocean Energy Management
 3801 Centerpoint Drive, Suite 500
 Anchorage, Alaska 99503
 Fax: (907) 334-5322
 Phone: (907) 334-5323
 Email: AKMMSRE@boem.gov

Additional data release announcements may be found at <http://www.boem.gov/About-BOEM/BOEM-Regions/Alaska-Region/Resource-Evaluation/Released-Geological-and-Geophysical-Data/Index.aspx>