

---

---

**MMS**

U.S. Department of the Interior  
Minerals Management Service  
Gulf of Mexico OCS Region

# Leasing Activities Information

---

---

**WESTERN GULF OF MEXICO  
LEASE SALE 187  
August 20, 2003**

**UNLEASED SPLIT BLOCKS  
and  
AVAILABLE UNLEASED ACREAGE OF BLOCKS  
WITH  
ALIQUOTS AND IRREGULAR PORTIONS  
UNDER LEASE OR DEFERRED**

**For Oil and Gas Leases in the Gulf of Mexico**

**— MMS —**



**UNLEASED SPLIT BLOCKS  
and  
AVAILABLE UNLEASED ACREAGE OF BLOCKS  
WITH  
ALIQUOTS AND IRREGULAR PORTIONS  
UNDER LEASE OR DEFERRED**

**INSTRUCTION TO BIDDERS**

This package identifies the unleased Federal acreage along the offshore Texas/Federal boundary and available unleased acreages of blocks with portions under lease or deferred. If a block is bid upon, all available unleased acreage within that block must be bid upon.

Method of bidding – As described in the final Notice of Lease Sale 187.

Split and irregular blocks leased as a result of the sale will be legally described by using X and Y coordinates. Any specific questions pertaining to the unleased split blocks, or those with portions under lease, should be referred to Charles Hill (504) 736-2795.

**WESTERN GULF OF MEXICO LEASE SALE 187**  
**Blocks List By Map Area And Block Number Sequence**

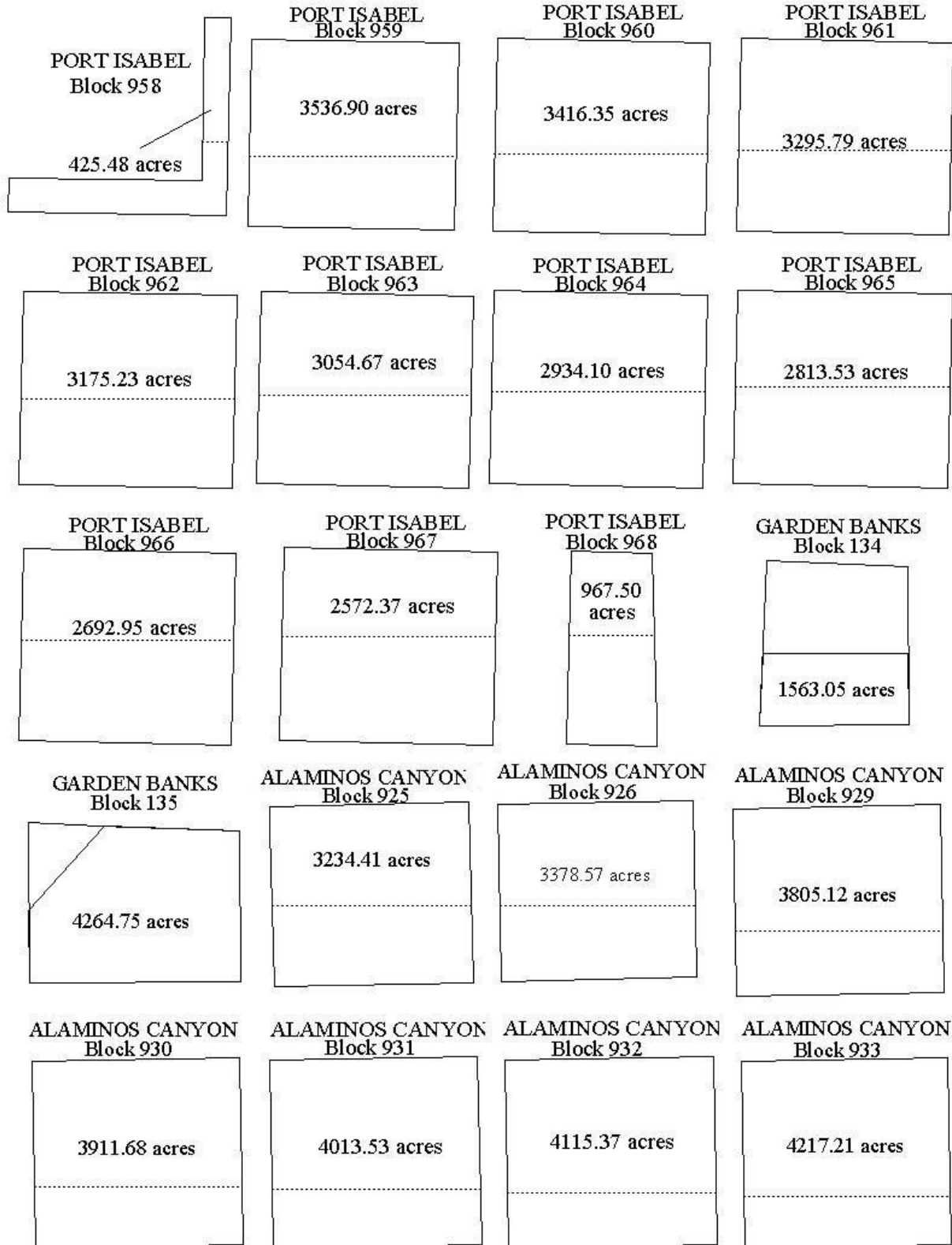
<u>MAP AREA NAME &amp; NUMBER</u>	<u>BLOCK</u>	<u>MAP AREA NAME &amp; NUMBER</u>	<u>BLOCK</u>	<u>MAP AREA NAME &amp; NUMBER</u>	<u>BLOCK</u>
Port Isabel	958	Alaminos Canyon	1000	Sigsbee	290
NG14-06	959	NG15-04	1001	Escarpment	291
	960	(continued)	1002	NG15-08	292
	961		1003	(continued)	293
	962		1004		294
	963		1005		295
	964		1006		296
	965		1007		297
	966		1008		298
	967		1009		342
	968				343
		Keathley Canyon	969		344
		NG15-05	970		345
Garden Banks	134		971		346
NG15-02	135		972		347
			973		348
Alaminos Canyon	925		974		349
NG15-04	926		975		
	929		976	South Padre Island	1027
	930		977	TX1	1043
	931		978		1044
	932		979		1049
	933		980		1064
	934				1069
	935	Sigsbee Escarpment	12		1070
	936	NG15-08	13		1085
	941		14		1090
	945		58		1105
	992		59		1110
	993		60		1126
	996		104		1130
			105		1131
			106		1146
			150		
			151		
			195		
			196		
			240		
			241		
			285		
			286		
			287		
			288		
			289		

**WESTERN GULF OF MEXICO LEASE SALE 187**  
 Blocks List By Map Area And Block Number Sequence (*continued*)

<u>MAP AREA NAME &amp; NUMBER</u>	<u>BLOCK</u>	<u>MAP AREA NAME &amp; NUMBER</u>	<u>BLOCK</u>	<u>MAP AREA NAME &amp; NUMBER</u>	<u>BLOCK</u>
South Padre Island	A84	Mustang Island	864	Galveston	103
East	A85	TX3	879	TX6	145
TX1A	A86	( <i>continued</i> )	880		150
	A87				182
	A89	Matagorda Island	527		188
	A90	TX4	558		189
	1160		592		214
	1161		599		220
	1162		601		221
			624		222
North Padre Island	883		625		245
TX2	924		626		250
	939		634		251
	944		658		275
	959		664		280
	964		688		281
	965		689		304
	980		690		305
	985		695		311
	1001		718		312
	1006		719		
	1007			High Island	23
	1022	Brazos	335	TX7	31
		TX5	341		55
Mustang Island	724		364		63
TX3	744		365		64
	745		366		65
	750		367		71
	751		374		96
	770		400		97
	775		401		98
	776		402		105
	798		409		135
	821		410		136
	822		411		154
	838		438		155
	842		448		
	843		449	High Island South	A-513
	859		450	TX7B	
			452		
			477	High Island	A-374
			479	East & South	A-383
			489	TX7C	A-388
					A-399
					A-401

# WESTERN GULF OF MEXICO LEASE SALE 187

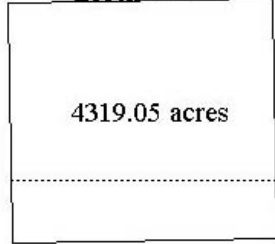
## Block Diagrams



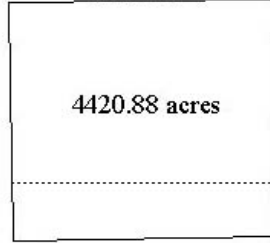
**WESTERN GULF OF MEXICO LEASE SALE 187**

Block Diagrams (continued)

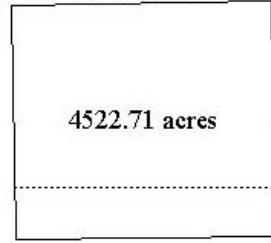
ALAMINOS CANYON  
Block 934



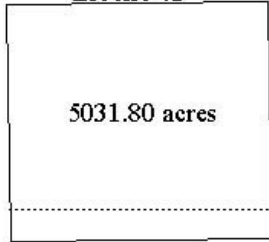
ALAMINOS CANYON  
Block 935



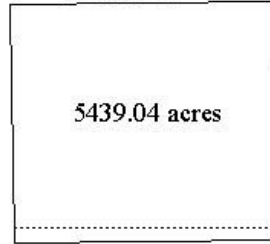
ALAMINOS CANYON  
Block 936



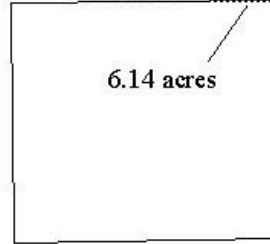
ALAMINOS CANYON  
Block 941



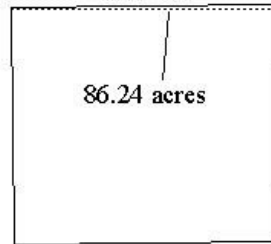
ALAMINOS CANYON  
Block 945



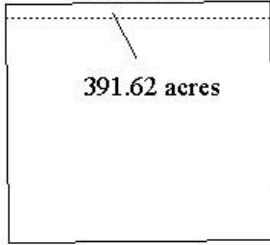
ALAMINOS CANYON  
Block 992



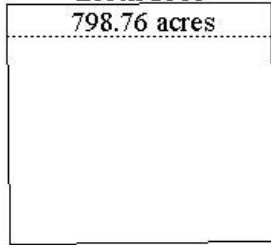
ALAMINOS CANYON  
Block 993



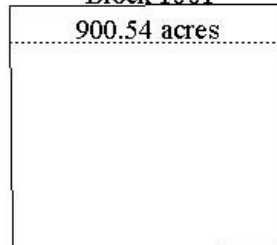
ALAMINOS CANYON  
Block 996



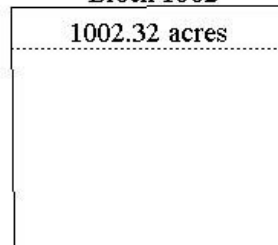
ALAMINOS CANYON  
Block 1000



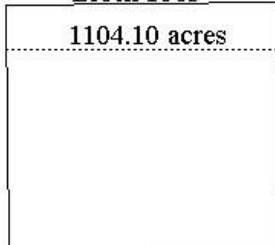
ALAMINOS CANYON  
Block 1001



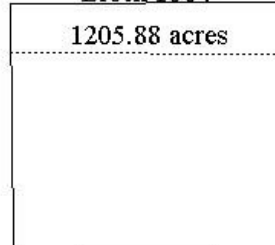
ALAMINOS CANYON  
Block 1002



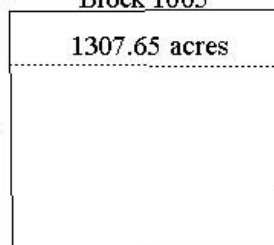
ALAMINOS CANYON  
Block 1003



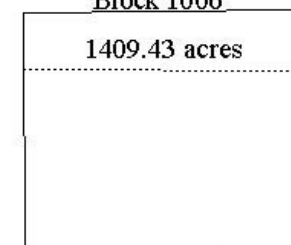
ALAMINOS CANYON  
Block 1004



ALAMINOS CANYON  
Block 1005



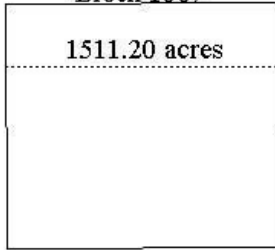
ALAMINOS CANYON  
Block 1006



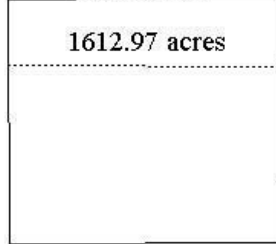
**WESTERN GULF OF MEXICO LEASE SALE 187**

Block Diagrams (continued)

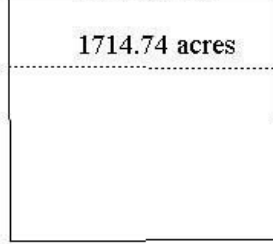
ALAMINOS CANYON  
Block 1007



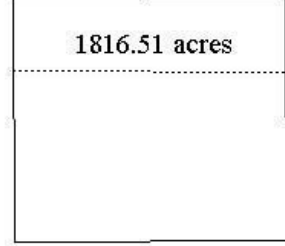
ALAMINOS CANYON  
Block 1008



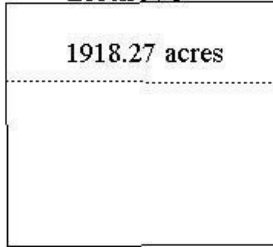
ALAMINOS CANYON  
Block 1009



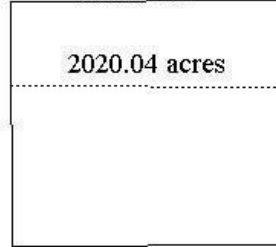
KEATHLEY CANYON  
Block 969



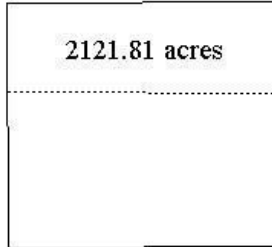
KEATHLEY CANYON  
Block 970



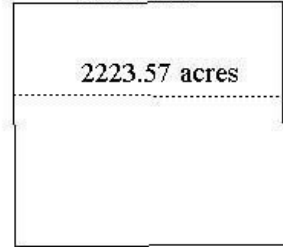
KEATHLEY CANYON  
Block 971



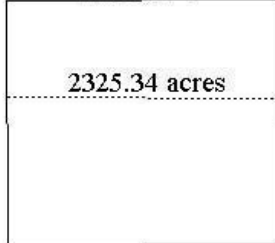
KEATHLEY CANYON  
Block 972



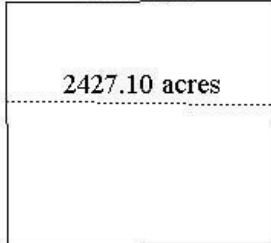
KEATHLEY CANYON  
Block 973



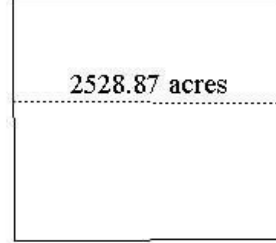
KEATHLEY CANYON  
Block 974



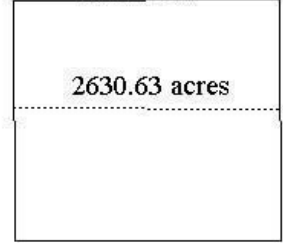
KEATHLEY CANYON  
Block 975



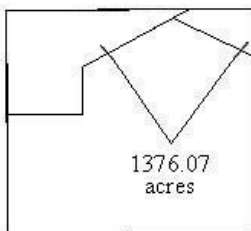
KEATHLEY CANYON  
Block 976



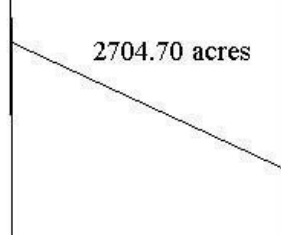
KEATHLEY CANYON  
Block 977



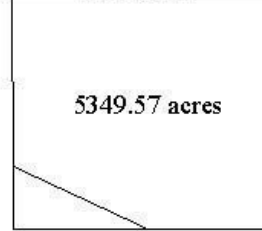
KEATHLEY CANYON  
Block 978



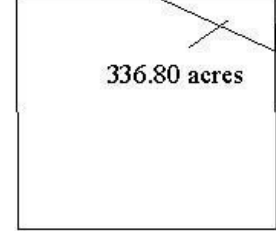
KEATHLEY CANYON  
Block 979



KEATHLEY CANYON  
Block 980



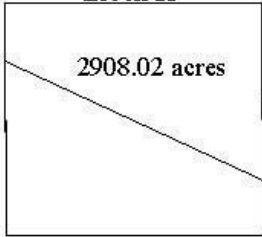
SIGSBEE ESCARPMENT  
Block 12



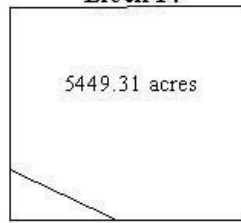
WESTERN GULF OF MEXICO LEASE SALE 187

Blocks Diagrams (continued)

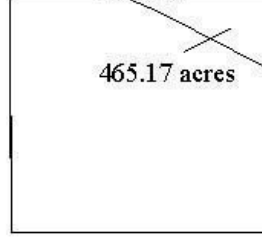
SIGSBEE ESCARPMENT  
Block 13



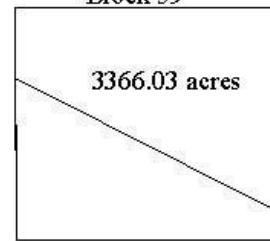
SIGSBEE ESCARPMENT  
Block 14



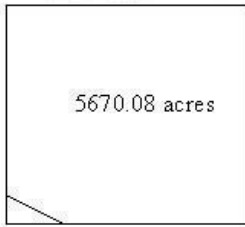
SIGSBEE ESCARPMENT  
Block 58



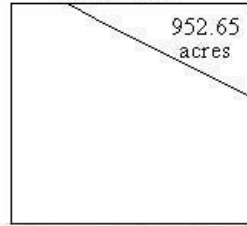
SIGSBEE ESCARPMENT  
Block 59



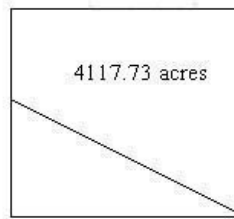
SIGSBEE ESCARPMENT  
Block 60



SIGSBEE ESCARPMENT  
Block 104



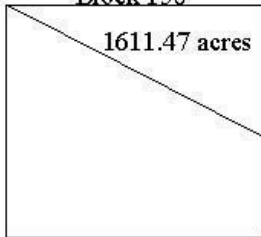
SIGSBEE ESCARPMENT  
Block 105



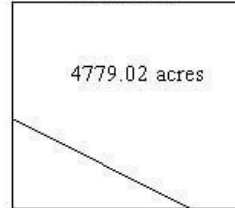
SIGSBEE ESCARPMENT  
Block 106



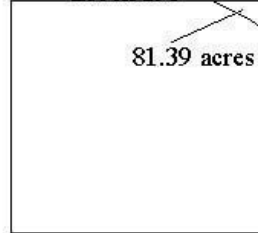
SIGSBEE ESCARPMENT  
Block 150



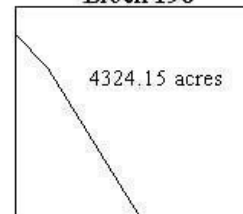
SIGSBEE ESCARPMENT  
Block 151



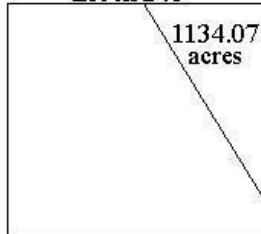
SIGSBEE ESCARPMENT  
Block 195



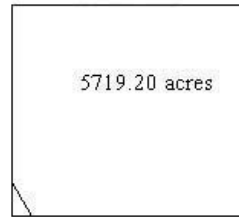
SIGSBEE ESCARPMENT  
Block 196



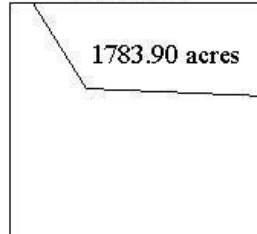
SIGSBEE ESCARPMENT  
Block 240



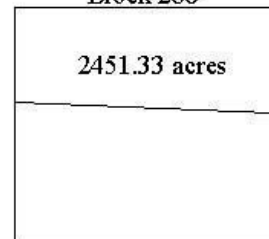
SIGSBEE ESCARPMENT  
Block 241



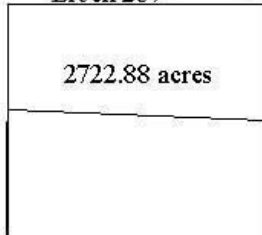
SIGSBEE ESCARPMENT  
Block 285



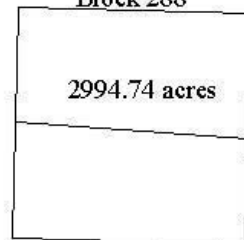
SIGSBEE ESCARPMENT  
Block 286



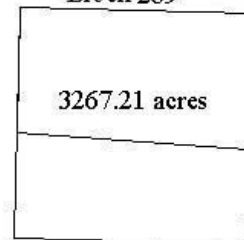
SIGSBEE ESCARPMENT  
Block 287



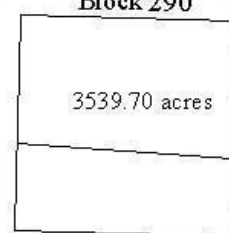
SIGSBEE ESCARPMENT  
Block 288



SIGSBEE ESCARPMENT  
Block 289



SIGSBEE ESCARPMENT  
Block 290

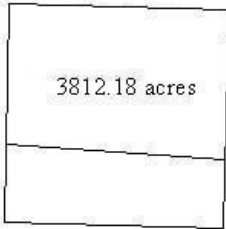




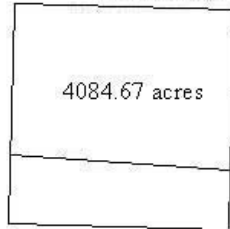
WESTERN GULF OF MEXICO LEASE SALE 187

Block Diagrams (continued)

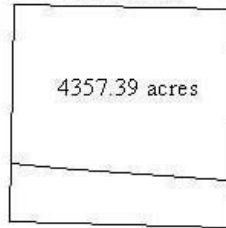
SIGSBEE ESCARPMENT  
Block 291



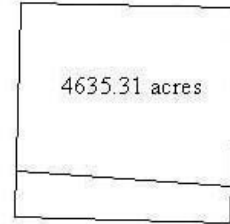
SIGSBEE ESCARPMENT  
Block 292



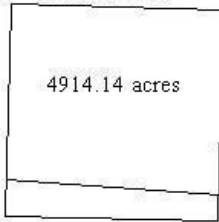
SIGSBEE ESCARPMENT  
Block 293



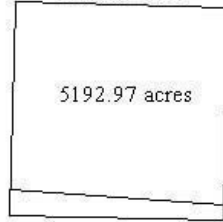
SIGSBEE ESCARPMENT  
Block 294



SIGSBEE ESCARPMENT  
Block 295



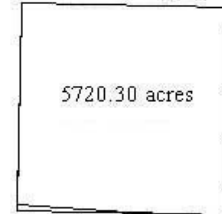
SIGSBEE ESCARPMENT  
Block 296



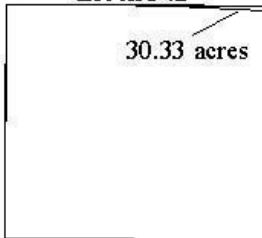
SIGSBEE ESCARPMENT  
Block 297



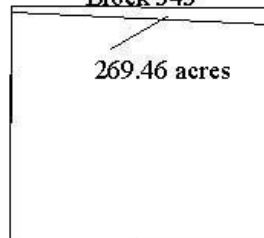
SIGSBEE ESCARPMENT  
Block 298



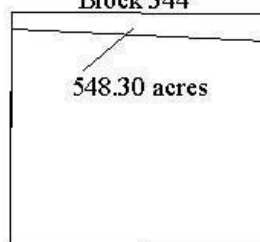
SIGSBEE ESCARPMENT  
Block 342



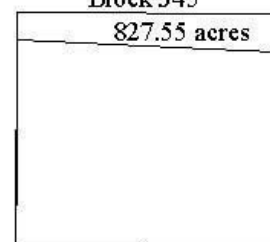
SIGSBEE ESCARPMENT  
Block 343



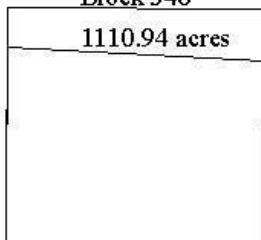
SIGSBEE ESCARPMENT  
Block 344



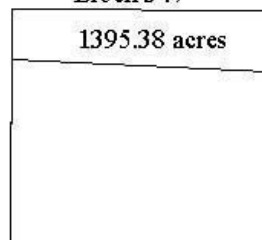
SIGSBEE ESCARPMENT  
Block 345



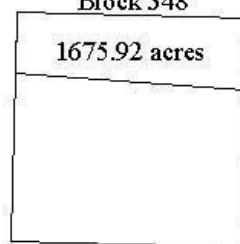
SIGSBEE ESCARPMENT  
Block 346



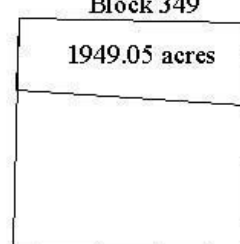
SIGSBEE ESCARPMENT  
Block 347



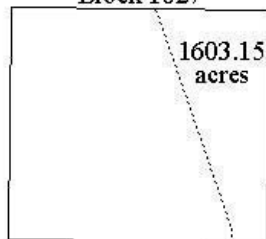
SIGSBEE ESCARPMENT  
Block 348



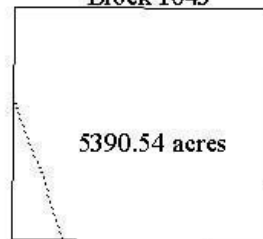
SIGSBEE ESCARPMENT  
Block 349



S. PADRE ISLAND  
Block 1027

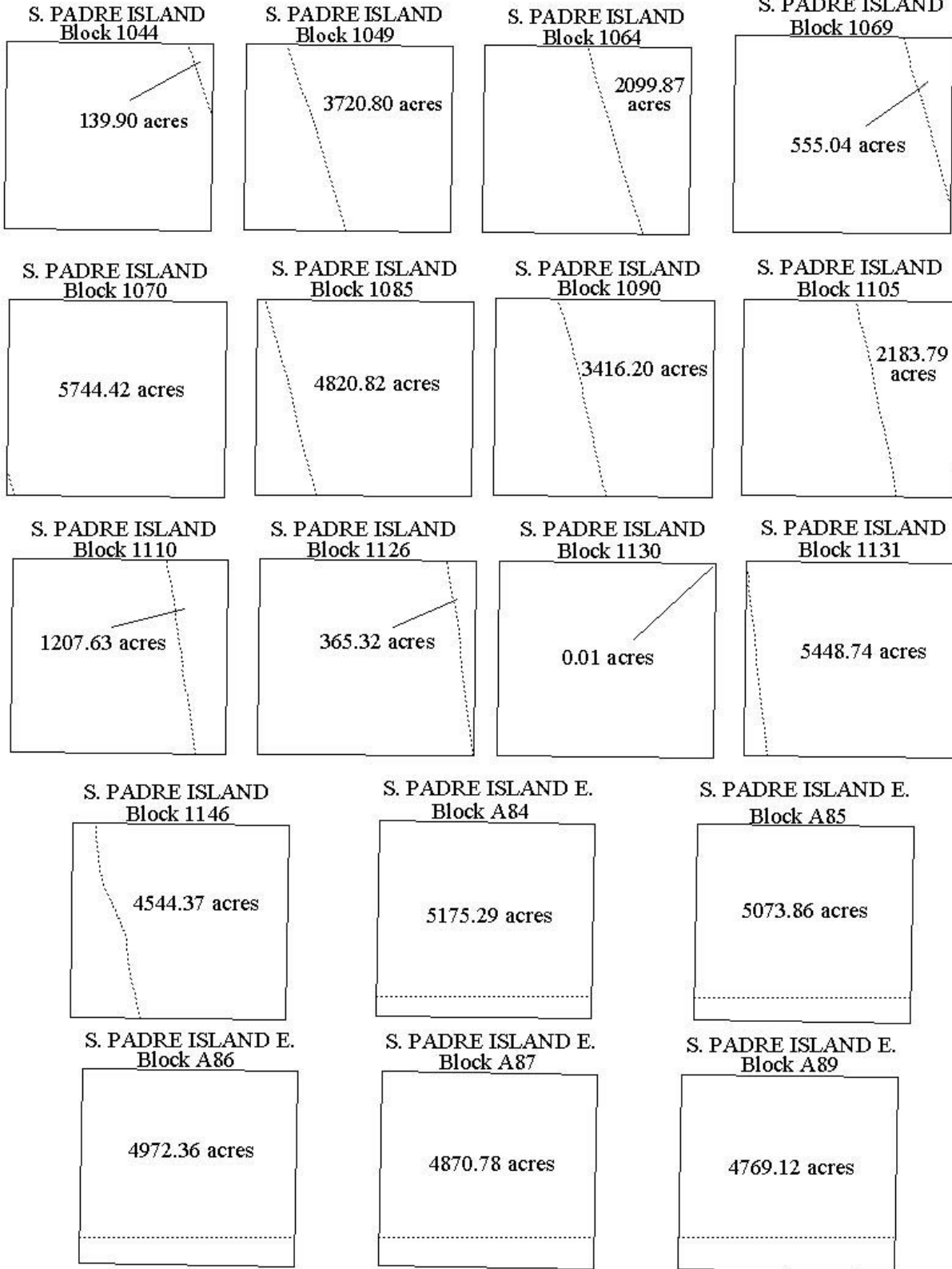


S. PADRE ISLAND  
Block 1043



**WESTERN GULF OF MEXICO LEASE SALE 187**

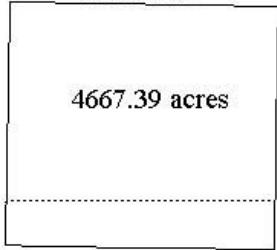
Block Diagrams (continued)



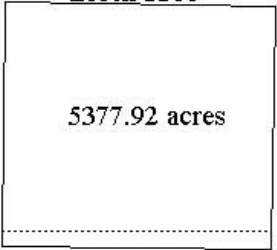
WESTERN GULF OF MEXICO LEASE SALE 187

Block Diagrams (continued)

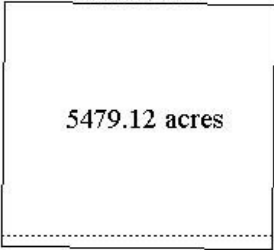
S. PADRE ISLAND E.  
Block A90



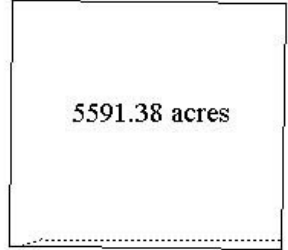
S. PADRE ISLAND E.  
Block 1160



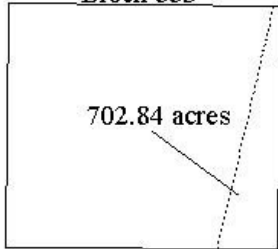
S. PADRE ISLAND E.  
Block 1161



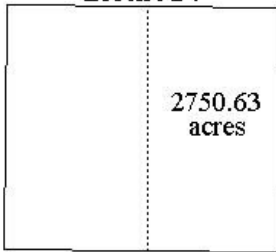
S. PADRE ISLAND E.  
Block 1162



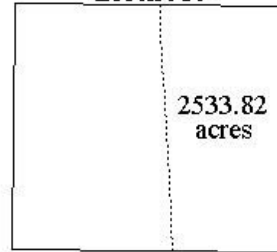
N. PADRE ISLAND  
Block 883



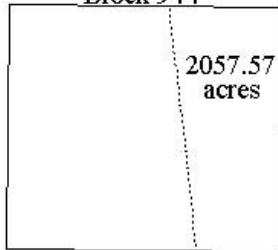
N. PADRE ISLAND  
Block 924



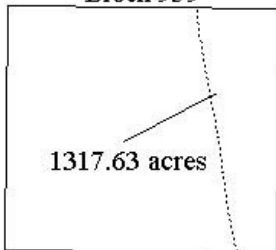
N. PADRE ISLAND  
Block 939



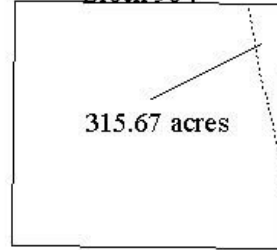
N. PADRE ISLAND  
Block 944



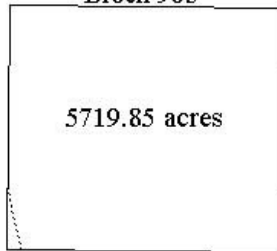
N. PADRE ISLAND  
Block 959



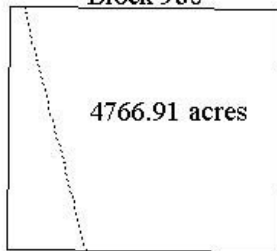
N. PADRE ISLAND  
Block 964



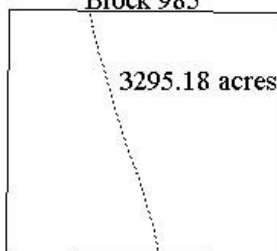
N. PADRE ISLAND  
Block 965



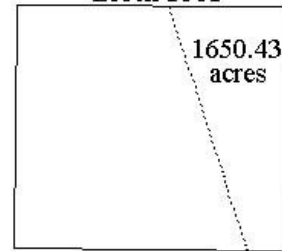
N. PADRE ISLAND  
Block 980



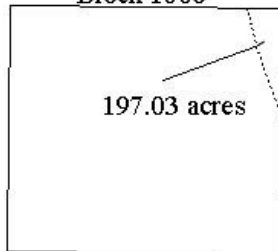
N. PADRE ISLAND  
Block 985



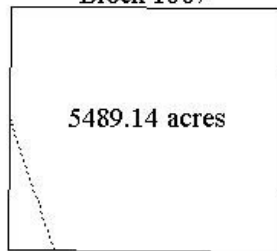
N. PADRE ISLAND  
Block 1001



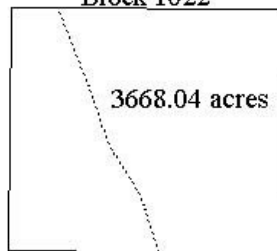
N. PADRE ISLAND  
Block 1006



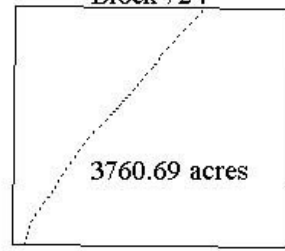
N. PADRE ISLAND  
Block 1007



N. PADRE ISLAND  
Block 1022

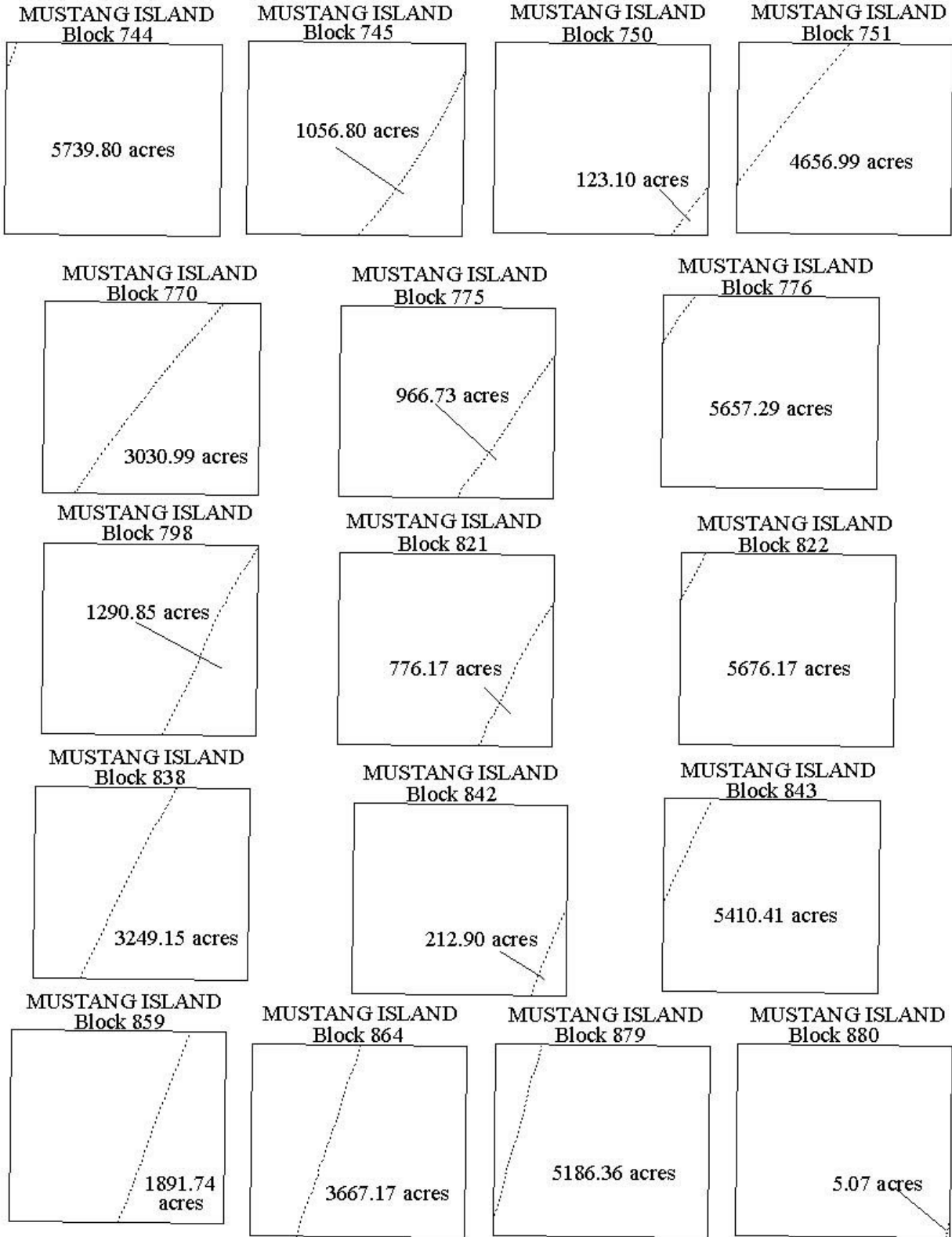


MUSTANG ISLAND  
Block 724



**WESTERN GULF OF MEXICO LEASE SALE 187**

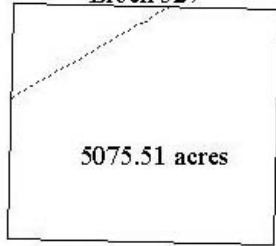
Block Diagrams (continued)



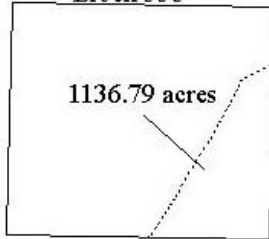
WESTERN GULF OF MEXICO LEASE SALE 187

Block Diagrams (continued)

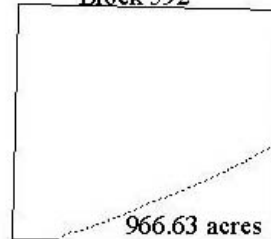
MATAGORDA ISLAND  
Block 527



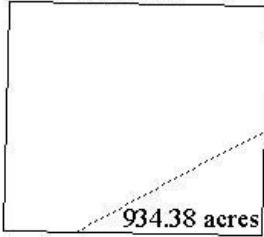
MATAGORDA ISLAND  
Block 558



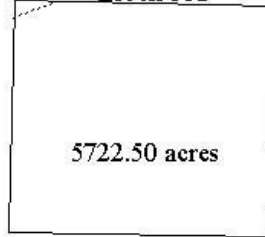
MATAGORDA ISLAND  
Block 592



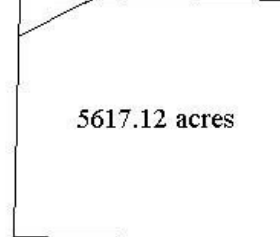
MATAGORDA ISLAND  
Block 599



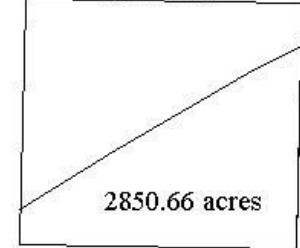
MATAGORDA ISLAND  
Block 601



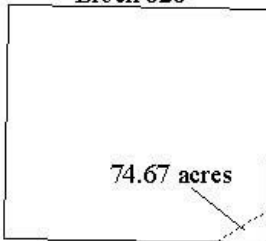
MATAGORDA ISLAND  
Block 624



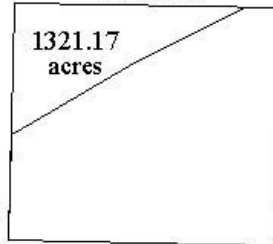
MATAGORDA ISLAND  
Block 625



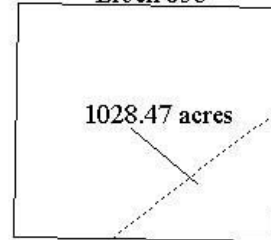
MATAGORDA ISLAND  
Block 626



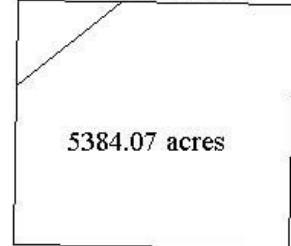
MATAGORDA ISLAND  
Block 634



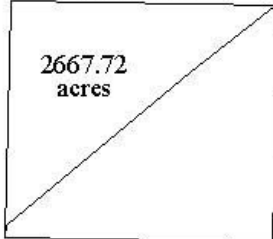
MATAGORDA ISLAND  
Block 658



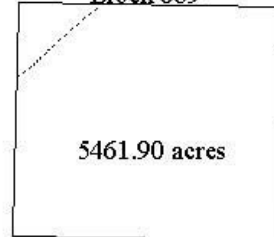
MATAGORDA ISLAND  
Block 664



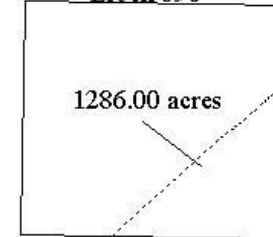
MATAGORDA ISLAND  
Block 688



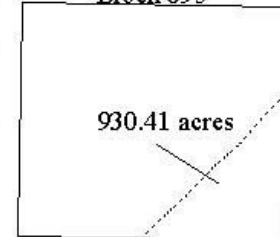
MATAGORDA ISLAND  
Block 689



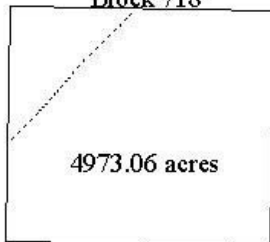
MATAGORDA ISLAND  
Block 690



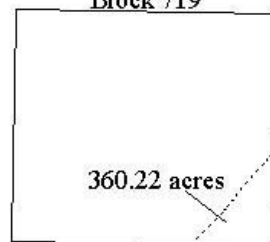
MATAGORDA ISLAND  
Block 695



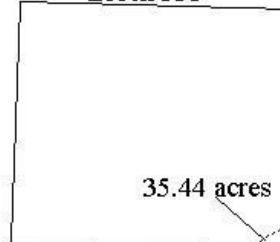
MATAGORDA ISLAND  
Block 718



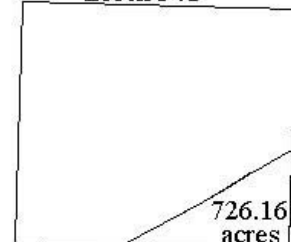
MATAGORDA ISLAND  
Block 719



BRAZOS  
Block 335

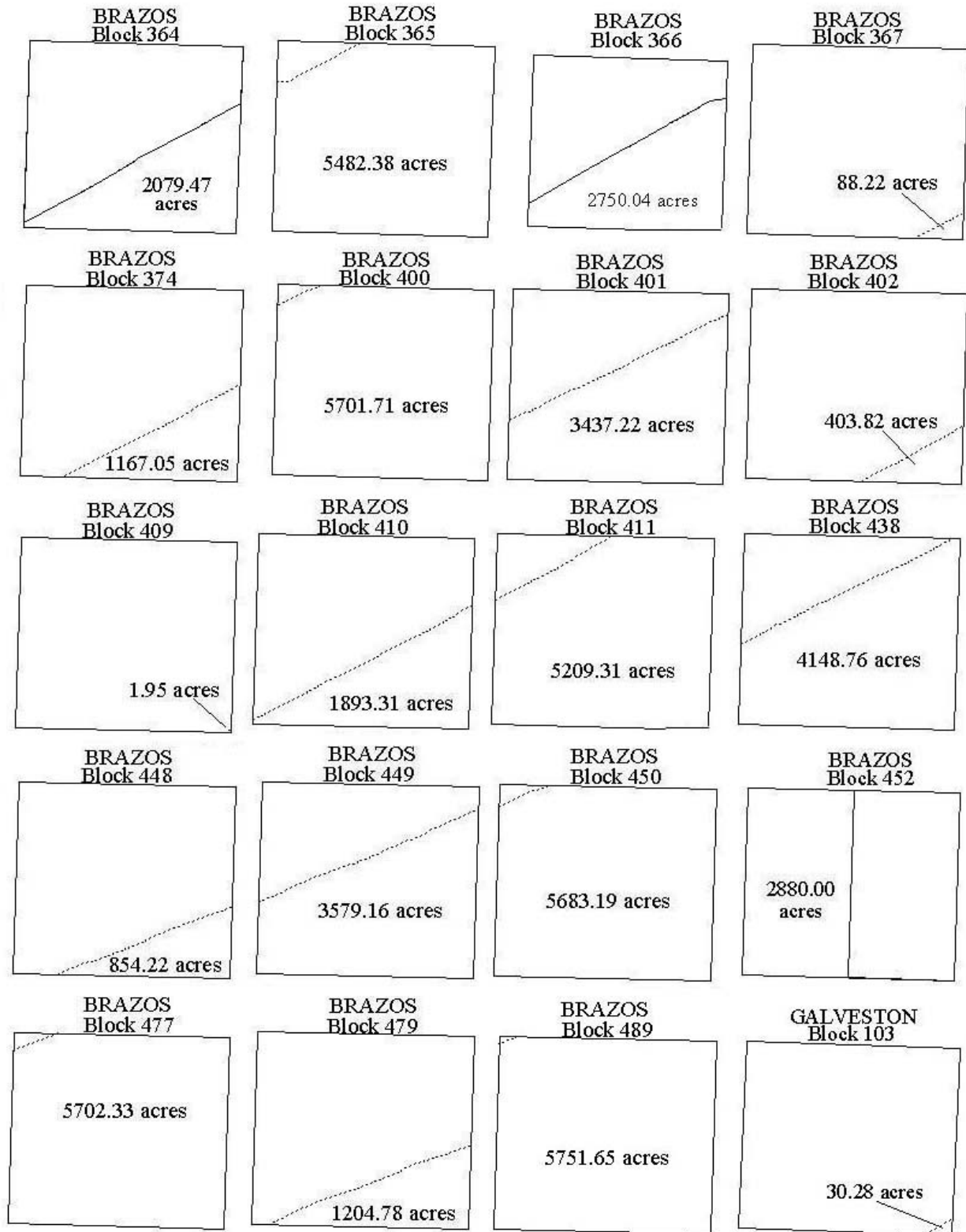


BRAZOS  
Block 341



WESTERN GULF OF MEXICO LEASE SALE 187

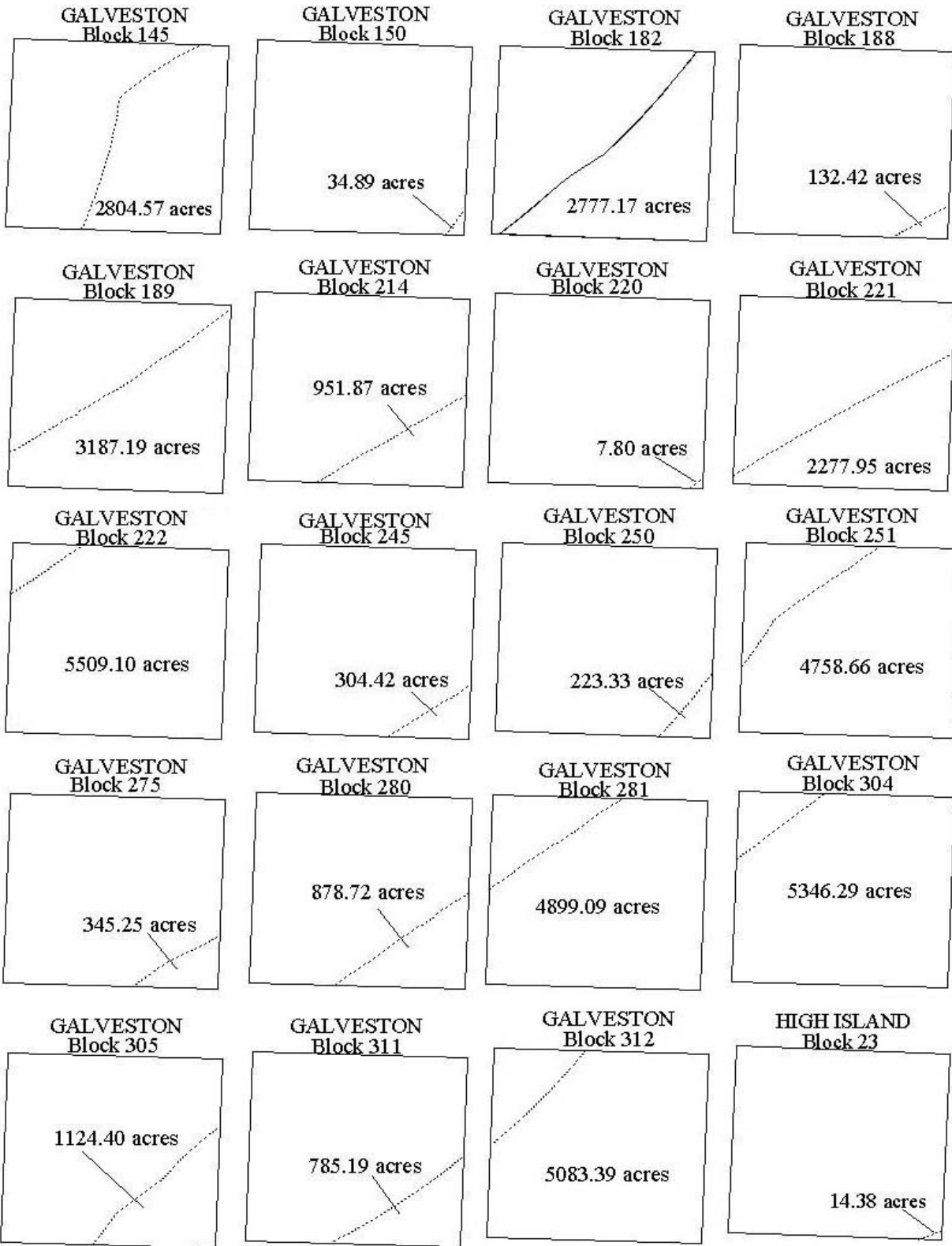
Block Diagrams (continued)



WESTERN GULF OF MEXICO LEASE SALE 187

Block Diagrams

(continued)



WESTERN GULF OF MEXICO LEASE SALE 187

Block Diagrams (continued)

