

# **BOEM Maine Renewable Energy Task Force Teleconference**

May 23, 2012

1:00 PM

# Agenda

- Introductions & Opening Remarks
- Background and Status
- Request for Competitive Interest
- Task Force Member Comments
- Proposed Revisions
- Notice of Intent (NOI)
- Next Steps

# Background

- On October 12, 2011 BOEM received an unsolicited request for a commercial wind lease on the Outer Continental Shelf (OCS) offshore Maine
  - Statoil North America (Statoil NA)
  - The proposed project “Hywind Maine” would consist of four 3 MW turbines configured for a total of 12 MW at water depths greater than 100 meters

# Background (Contd.)

- BOEM conducted a qualifications review and has deemed the applicant to be legally, technically, and financially qualified
- Next step – public notice of the proposed lease area and Request for Competitive Interest (RFCI)

# Key Elements of the RFCI

- Agency, Action, Summary, Dates, Submission Procedures, Contact Information
- Supplementary Information
  - Purpose of the RFCI
  - Background Information (EPA Act, EO 13547, Task Force)
  - Determination of Competitive Interest & Leasing Process
  - Description of the Proposed Lease Area
  - Required Indication of Interest Information
  - Requested Information from Interested or Affected Parties
  - Protection of Privileged or Confidential Information (FOIA, NHPA)

# Purpose of the RFCI

- Notice published in *Federal Register* for public comment to:
  - Describe Statoil's proposal to acquire an OCS wind lease
  - Solicit public input regarding the proposal, its potential environmental consequences and other uses within in which the proposal will be located
  - Solicit submissions of indications of competitive interest for a commercial lease for wind energy development for the area identified in the notice

# Background Information

- Energy Policy Act
- BOEM Maine Renewable Energy Task Force
- Executive Order

# Determination of Competitive Interest and Leasing Process

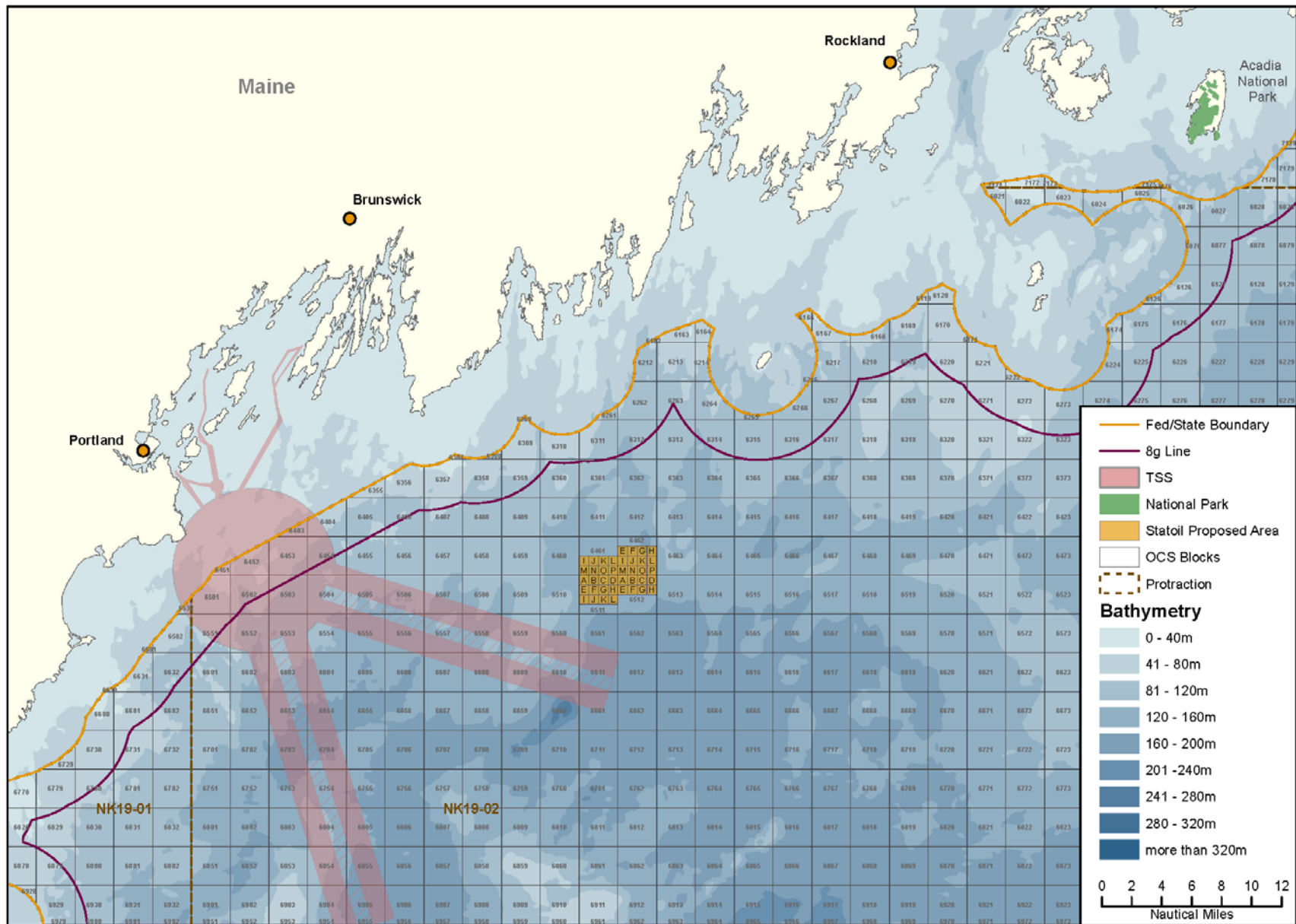
- Evaluate responses received for completeness and qualifications
- Determine whether competitive interest exists
- If competitive – competitive leasing process outlined in 30 CFR 585.211
- If noncompetitive – noncompetitive leasing process outlined in 30 CFR 585.231
  - Notice of Determination of No Competitive Interest
  - Plan submittal by applicant (i.e. submittal of the COP in this case)
  - BOEM begins environmental analysis



# Description of the Proposal

- The proposed lease area consists of four partial lease blocks
- Project consists of four 3 MW wind turbine generators for a total of 12 MW of nameplate capacity
- The water depth at the Hywind Maine location is greater than 100m (328 feet) and located about 12 nautical miles off the coast

# Statoil Proposed Area



# Required Indication of Interest Information

- Statement to acquire a commercial wind lease for the proposed lease area
- Description of objectives and facilities
- Schedule of proposed activities
- Available and pertinent data and information concerning renewable energy resources and environmental conditions in the area
- Documentation to establish legal, technical and financial qualifications

# Requested Information from Interested or Affected Parties

- Geological and geophysical conditions
- Historic properties potentially affected by the construction of met towers or met buoys or commercial wind development in the area
- Multiple uses of the area such as navigation, commercial and vessel usage, especially impacts to commercial and recreational fishing
- Other relevant environmental and socioeconomic information

# Task Force Member Comments

- NOAA - National Marine Fisheries Services
  - Essential Fish Habitat Consultations: Any adverse affect on the EFH for these species will require an EFH consultation with NMFS and the preparation of an EFH assessment
  - Section 7 consultations: Anticipate consultations with BOEM will be needed
  - An assessment of fishing resources and activities within the proposed lease area should be conducted
  - Habitat and Fishing Closure Areas: An assessment should be prepared evaluating any direct or indirect effects on those closed areas to habitats and fishing activities



# Task Force Member Comments (Contd.)

- Maine State Planning Office Clarifications:
  - Statoil and its “long term objectives” (Pages 1-2)
  - Additional information on how BOEM will consider comments regarding environmental issues and existing uses (page 2)
  - Examples of other relevant environmental or socioeconomic information (Page 12)

# Notice of Intent

- Summary
- Authority
- Purpose of the NOI
- Supplemental Information
- Cooperating Agencies
- Comments

# Next Steps

- BOEM will consider all comments received from Task Force members
- BOEM internal review/approval process
- Publication in the *Federal Register* for public comment
- Next meeting to present/discuss responses: Fall 2012



# Questions?

## Contact Information

Aditi Mirani, Project Coordinator

[Aditi.Mirani@boem.gov](mailto:Aditi.Mirani@boem.gov)

703-787-1752

Jessica Bradley, Project Coordinator

[Jessica.Bradley@boem.gov](mailto:Jessica.Bradley@boem.gov)

703-787-1730

Algene Byrum, Environmental Review Coordinator

[Algene.byrum@boem.gov](mailto:Algene.byrum@boem.gov)

703-787-1329