

# Massachusetts RFI Comments

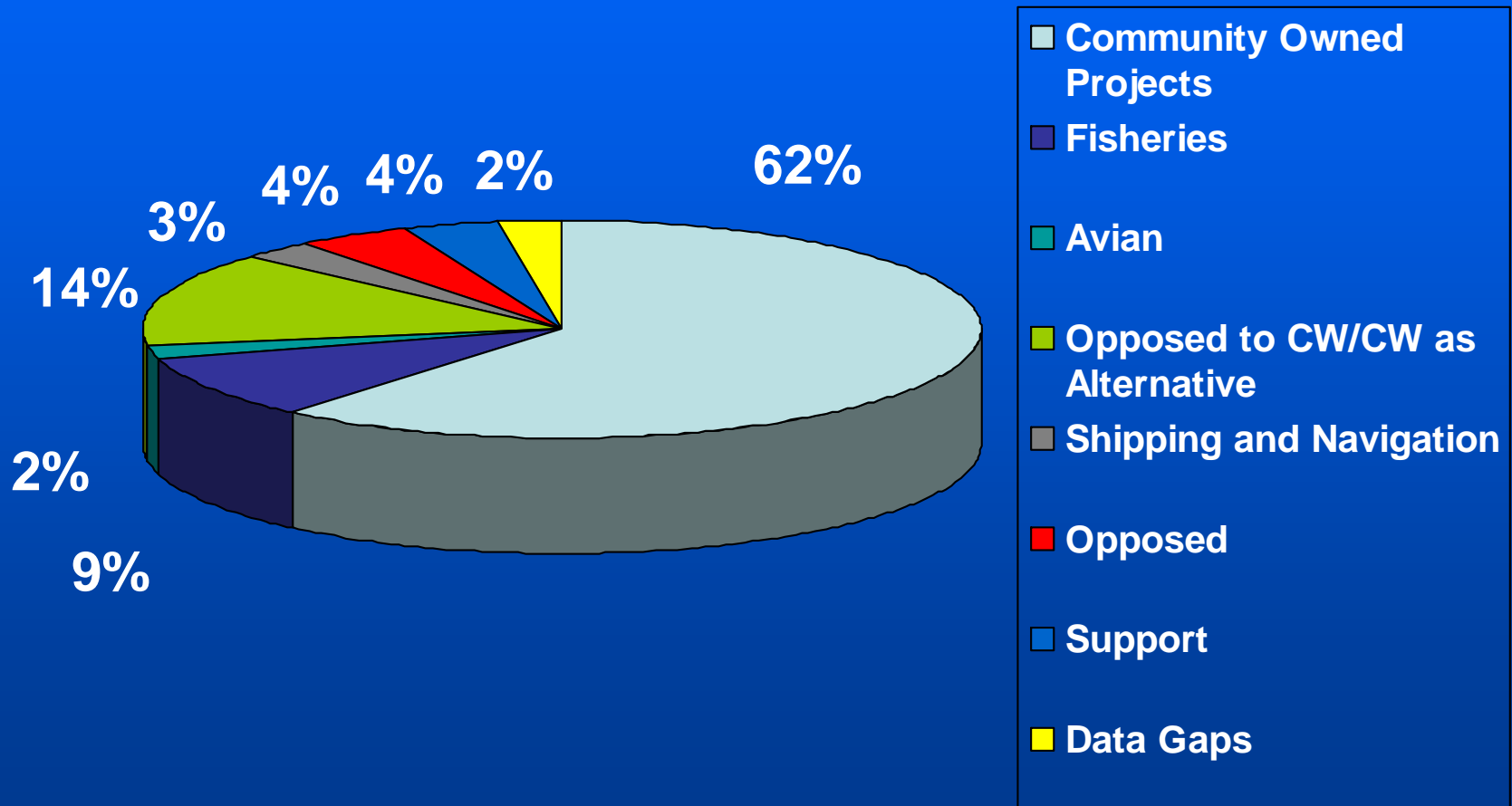


Brian Krevor  
Environmental Protection Specialist  
Office of Offshore Alternative Energy Programs  
BOEMRE

# Summary of Comments

- 248 RFI comments received
- Many commenters addressed multiple issues
- The majority of the comments focused on the following issues:
  - Community Owned Projects
  - Shipping and Navigation
  - Fisheries
  - Marine Mammals
  - Avian
  - Coastal Marine Spatial Planning (CMSP)
  - Opposition to Cape Wind/MA RFI as Alternative
  - Support or Opposition to MA RFI
  - Data Gaps/Additional Studies Needed
  - Visual Impacts
  - Tribal

# Major MA RFI Comments



# Shipping and Navigation

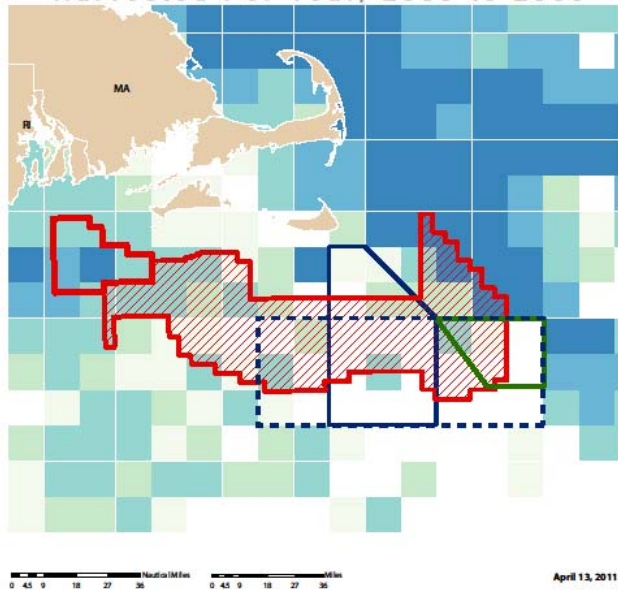
- Comments received from USCG, American Association of Port Authorities, The American Waterways Operators, Sandy Hook Pilots, Port Authority of NY and NJ, Commonwealth of MA, and Individual Citizens.
- Concerned about collisions and/or allisions caused by wind farm development in or in close proximity to Traffic Separation Schemes (TSS).
- Recommend that blocks overlapping with and in close proximity to the Boston and Nantucket to Ambrose TSS be excluded.
- Recommend that BOEMRE use historic AIS data to determine vessel traffic density.

# Fisheries

- Comments received from industry groups, non-governmental organization, Federal agencies, State and Local Government, and individual citizens.
- Concerned about the lack of outreach to fishermen.
- Concerned that wind farm development in the RFI would cause hardship on commercial fishermen.
- Presented data and maps showing where high concentrations of fish are located within the RFI.
- Recommended that BOEMRE exclude blocks east of the 70 degree line.

# Fisheries Maps Submitted

Map 2: Average Pounds of Cod Harvested Per Year, 2000 to 2009



- Average pounds of cod harvested**
- 0 to 2
  - 2 to 100
  - 100 to 1,500
  - 1,500 to 10,000
  - > 10,000
- RI / MA Area of Mutual Interest**
- Massachusetts RFI Area**
- Nantucket Lightship Scallop Access Area**
- Nantucket Lightship Closed Area**
- Nantucket Lightship Habitat Closure Area**

This map shows the average pounds of cod harvested per year from 2000 to 2009 by ten minute square in relation to the proposed offshore wind area. These harvest values are based on the landed weight reported by seafood dealers contained in the vessel trip reports. These reports are required for each federally permitted fishing vessel. The Nantucket Lightship scallop access area, closed area, and habitat closure area boundaries are included to highlight areas where commercial fishing has been restricted for twenty years. These areas may not have high harvest yield, but they are important for the fisheries biological productivity.

The RI / MA Area of Mutual Interest boundary is provided courtesy of the US Environmental Data Center and is based on the federal OCS lease blocks.

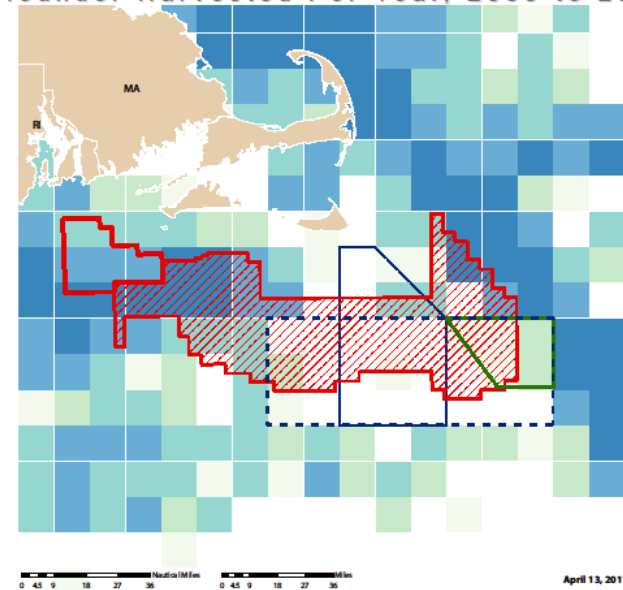
The Massachusetts RFI Area boundary was downloaded from the Massachusetts CZM on the mapping tool on 3/22/2011 at <http://www.mass.gov/czm/mapping/index.htm>.

The Nantucket Lightship Scallop Access Area is created from the CZM data option on 3/22/2010 which can be found at <http://naticklyfms.bea.gov>.

The Nantucket Lightship Closed Area and Habitat Closure Area boundaries were downloaded from the Multi-purpose Marine Collector at <http://www.nmfs.noaa.gov/databases/gulfdb/atlapp>.



Map 3: Average Pounds of Yellowtail Flounder Harvested Per Year, 2000 to 2009



- Average pounds of yellowtail flounder harvested**
- 0 to 2
  - 2 to 100
  - 100 to 800
  - 800 to 5,000
  - > 5,000
- RI / MA Area of Mutual Interest**
- Massachusetts RFI Area**
- Nantucket Lightship Scallop Access Area**
- Nantucket Lightship Closed Area**
- Nantucket Lightship Habitat Closure Area**

This map shows the average pounds of yellowtail flounder harvested per year from 2000 to 2009 by ten minute square in relation to the proposed offshore wind area. These harvest values are based on the landed weight reported by seafood dealers contained in the vessel trip reports. These reports are required for each federally permitted fishing vessel. The Nantucket Lightship scallop access area, closed area, and habitat closure area boundaries are included to highlight areas where commercial fishing has been restricted for twenty years. These areas may not have high harvest yield, but they are important for the fisheries biological productivity.

The RI / MA Area of Mutual Interest boundary is provided courtesy of the US Environmental Data Center and is based on the federal OCS lease blocks.

The Massachusetts RFI Area boundary was downloaded from the Massachusetts CZM on the mapping tool on 3/22/2011 at <http://www.mass.gov/czm/mapping/index.htm>.

The Nantucket Lightship Scallop Access Area is created from the CZM data option on 3/22/2010 which can be found at <http://naticklyfms.bea.gov>.

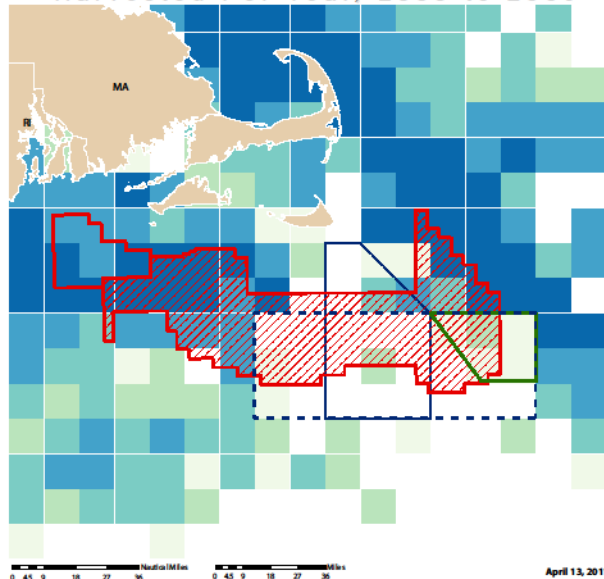
The Nantucket Lightship Closed Area and Habitat Closure Area boundaries were downloaded from the Multi-purpose Marine Collector at <http://www.nmfs.noaa.gov/databases/gulfdb/atlapp>.





# Fisheries Maps Submitted Cont.

Map 4: Average Pounds of Winter Flounder Harvested Per Year, 2000 to 2009



Average pounds of winter flounder harvested

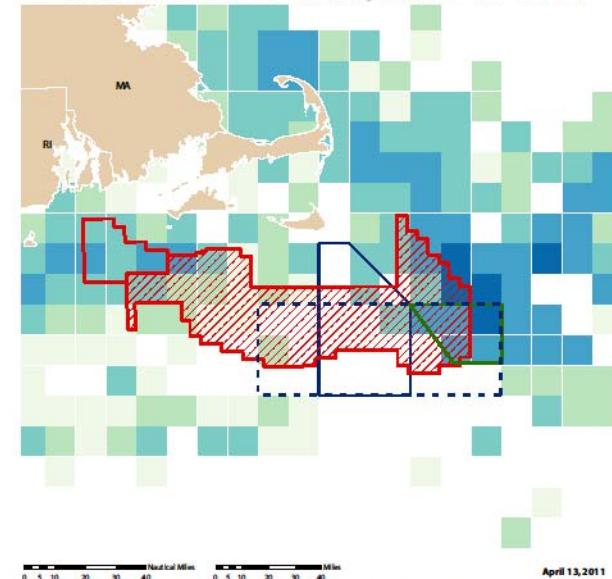
- 0 to 3
- 3 to 50
- 50 to 400
- 400 to 6,000
- > 6,000
- RI / MA Area of Mutual Interest
- Massachusetts RFI Area
- Nantucket Lightship Scallop Access Area
- Nantucket Lightship Closed Area
- Nantucket Lightship Habitat Closure Area

This map shows the average pounds of winter flounder harvested per year from 2000 to 2009 by ten minute square in relation to the proposed offshore wind area. These harvest values are based on the landed weight reported by seafood dealers contained in the vessel trip reports. These reports are required for each federally permitted fishing vessel. The Nantucket Lightship scallop access area, closed area, and habitat closure area boundaries are included to highlight areas where commercial fishing has been restricted for twenty years. These areas may not have high harvest yield, but they are important for the fisheries biological productivity.

The RI / MA Area of Mutual Interest boundary is provided courtesy of the US Environmental Data Center and is based on the federal OCS lease blocks.  
 The Massachusetts RFI Area boundary was downloaded from the Massachusetts CDM on line mapping tool on 3/22/2011 at <http://www.mass.gov/cdm/mapping/index.htm>.  
 The Nantucket Lightship Scallop Access Area is created from the C.F.R. description on 3/22/2010 which can be found at <http://efish.gov>.  
 The Nantucket Lightship Closed Area and Habitat Closure Area boundaries were downloaded from the Multiple Marine Cadastre at <http://www.mcm.ca.gov/default.asp>.



Map 5: Average Pounds of Sea Scallop Harvested Per Year, 2000 to 2009



Average pounds of sea scallop harvested

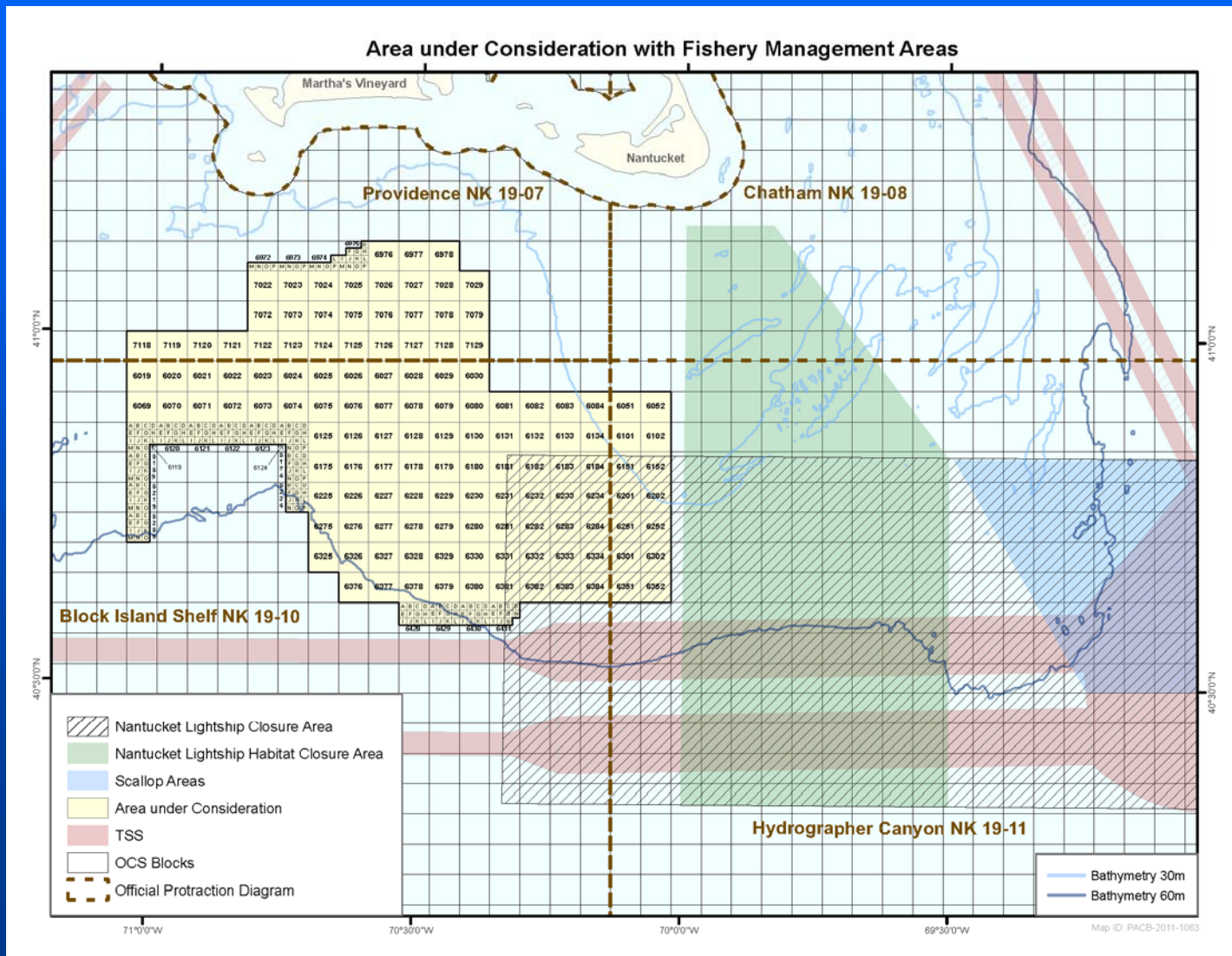
- 0 to 4
- 4 to 100
- 100 to 1,000
- 1,000 to 40,000
- > 40,000
- RI / MA Area of Mutual Interest
- Massachusetts RFI Area
- Nantucket Lightship Scallop Access Area
- Nantucket Lightship Closed Area
- Nantucket Lightship Habitat Closure Area

This map shows the average pounds of sea scallop harvested per year from 2000 to 2009 by ten minute square in relation to the proposed offshore wind area. These harvest values are based on the landed weight reported by seafood dealers contained in the vessel trip reports. These reports are required for each federally permitted fishing vessel. The Nantucket Lightship scallop access area, closed area, and habitat closure area boundaries are included to highlight areas where commercial fishing has been restricted for twenty years. These areas may not have high harvest yield, but they are important for the fisheries biological productivity.

The RI / MA Area of Mutual Interest boundary is provided courtesy of the US Environmental Data Center and is based on the federal OCS lease blocks.  
 The Massachusetts RFI Area boundary was downloaded from the Massachusetts CDM on line mapping tool on 3/22/2011 at <http://www.mass.gov/cdm/mapping/index.htm>.  
 The Nantucket Lightship Scallop Access Area is created from the C.F.R. description on 3/22/2010 which can be found at <http://efish.gov>.  
 The Nantucket Lightship Closed Area and Habitat Closure Area boundaries were downloaded from the Multiple Marine Cadastre at <http://www.mcm.ca.gov/default.asp>.



# Fisheries Management Areas



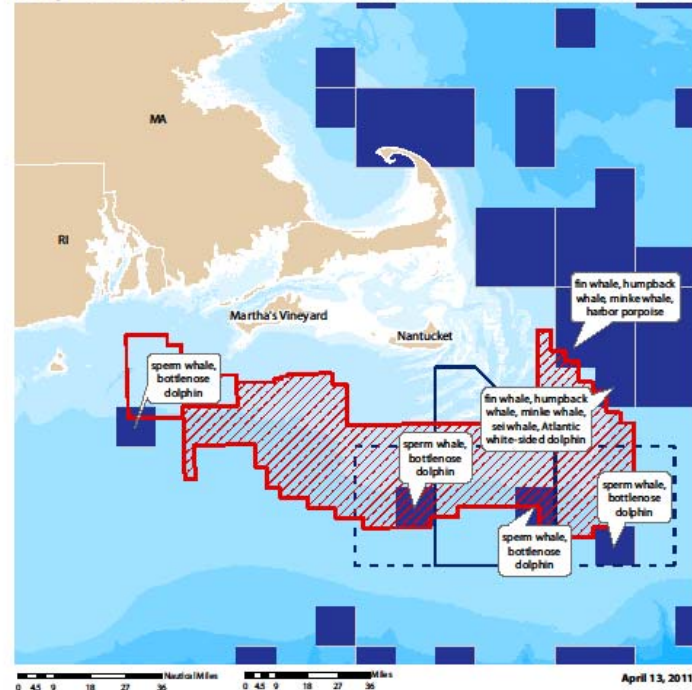


# Marine Mammals

- Comments received from the Marine Mammal Commission, The Humane Society of the United States, The Nature Conservancy, Sierra Club, Whale and Dolphin Conservation Society, National Wildlife Federation, Oceans Public Trust Initiative, Commonwealth of MA, and Individual Citizens.
- Many species of marine mammals have been sighted within the RFI area including Harbor Porpoises and endangered North Atlantic Right Whales.
- Not enough baseline data is available.
- Recommend that BOEMRE consult with resource agencies in order to develop standards for the collection of baseline information on marine mammals and their environment.
- Recommend that BOEMRE identify and address any data gaps before initiating the leasing process.

# Marine Mammal Map

Map 7: Important Marine Mammal Areas



- Important marine mammal areas
- RI / MA Area of Mutual Interest
- Massachusetts RFI Area
- Nantucket Lightship Closed Area
- Nantucket Lightship Habitat Closure Area

This map shows important marine mammal areas that were developed by TNC in relation to the proposed offshore wind area. The ten minute squares highlighted as important indicate locations where two or more mammal species were observed at least two standard deviations above the mean. These areas were identified through the use of effort-corrected seasonal sightings data collected by the U.S. Navy from 1979 to 2003.



The RI / MA Area of Mutual Interest boundaries provide courtesy of the US Environmental Data Center and is based on the federal OCS lease blocks.

The Massachusetts RFI Area boundaries were downloaded from the Massachusetts CZM online mapping tool on 3/22/2011 at <http://www.mass.gov/czm/mapping/index.htm>.

The Nantucket Lightship Callup Area Area is created from the C.F.R. description on 3/27/2010 which can be found at <http://fdlyfms.bov/>.

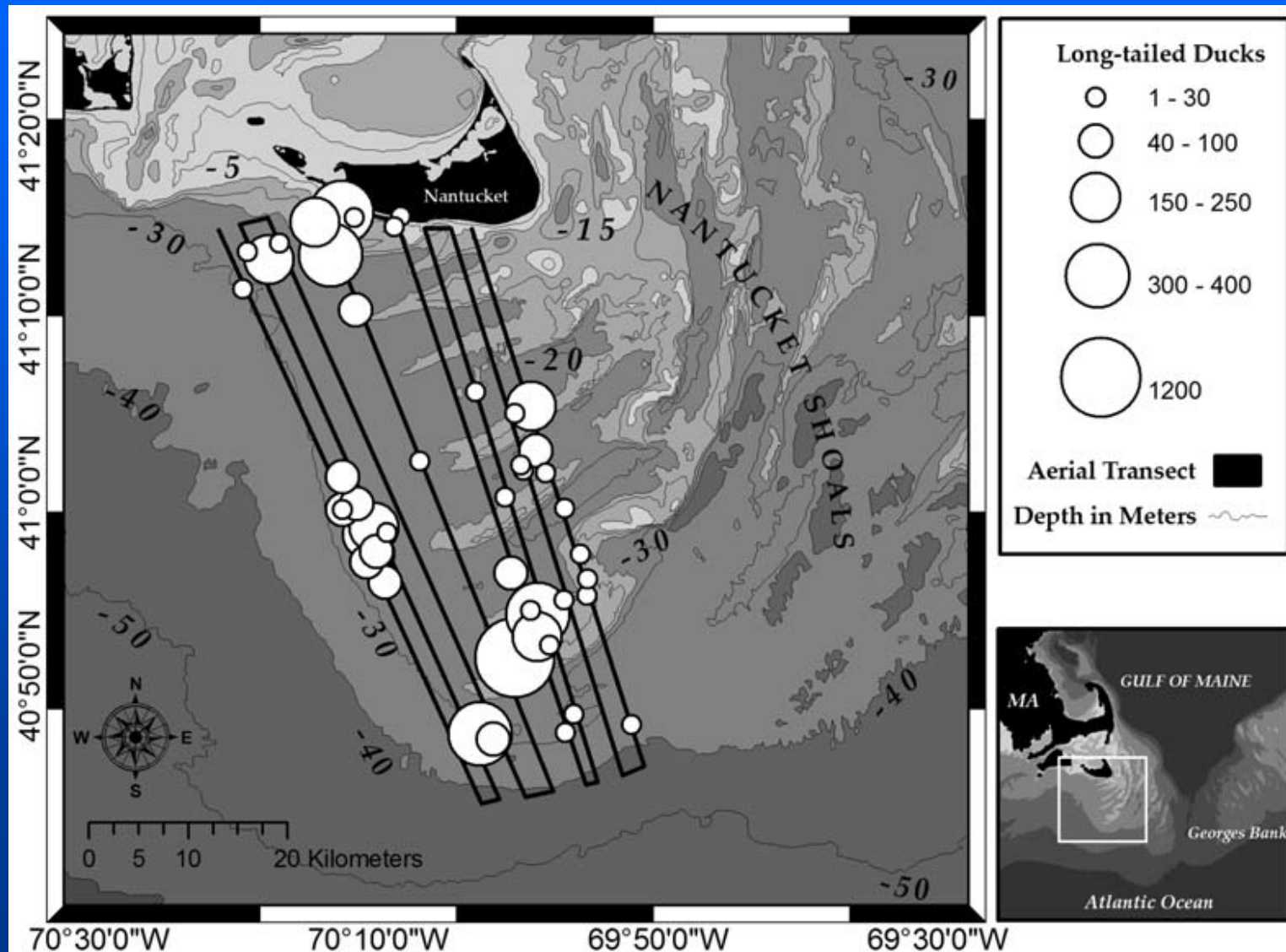
The Nantucket Lightship Closed Area and Habitat Closure Area boundaries were downloaded from the Multi Purpose Marine Cadastre at <http://www.marinecadastre.gov/default.aspx>.

The bathymetry data was compiled by TNC and is largely based on NOAA Coastal Relief Model.

# Avian

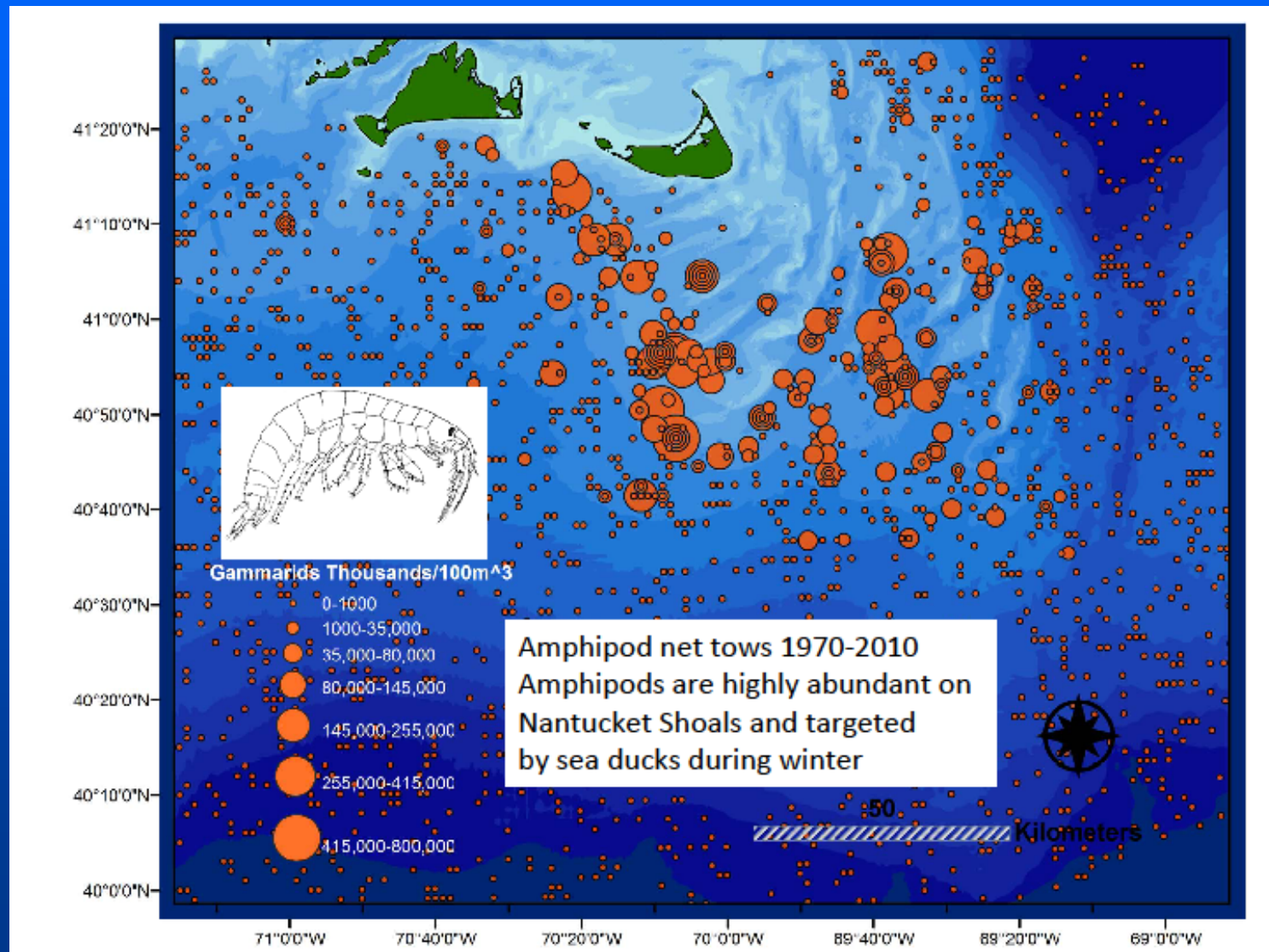
- Comments received from Mass Audubon, Conservation Law Foundation, the Humane Society of the United States, and the National Wildlife Federation.
- MA RFI area includes a globally significant habitat for Long Tailed Ducks.
  - Long Tailed Ducks are protected under the Migratory Bird Treaty Act and are also considered a game bird.
  - Data collected between 1997-2011 show that between 300,000 and 500,000 Long Tailed Ducks complete a daily commute from Nantucket Sound to forage in the waters immediately west of Nantucket Shoals.
  - Represents 30% of the global breeding population.
  - Foraging on high concentrations of pelagic amphipods.
- Concerned about large numbers of endangered Roseate Terns use of Muskeget Shoals.

# Long Tailed Duck Concentrations





# Pelagic Amphipods Concentrations





# Community Owned Projects

- Comments received from state and local officials, members of the Vineyard Power Cooperative, and individual citizens.
- Recommend that criteria be included to give additional consideration to community owned projects in the development plan and extra consideration be given to developers who will work with local communities.
- Recommend that BOEMRE reduce the financial and technical requirements for community-owned projects looking to build wind turbines in the MA RFI area.
- Recommend that BOEMRE set aside specific blocks for community owned development.

# Coastal Marine Spatial Planning

- Comments received from Alliance to Protect Nantucket Sound, National Marine Fisheries Service, Oceans Public Trust Initiative, Environmental Entrepreneurs, Sierra Club, Martha's Vineyard Commission, Conservation Law Foundation, Fishing Vessel Holly and Abby, and Individual Citizens.
- CMSP should be adopted prior to the siting of offshore wind facilities
- Concerned that MA RFI is circumventing the CMSP process.
- Recommend that principles of National Ocean Policy, particularly CMSP, should be used to determine wind farm locations.

# Additional Information

- All comments received in response to the MA RFI are available online at:

<http://www.boemre.gov/offshore/RenewableEnergy/State/Activities.htm#Massachusetts>

Thank you!

Brian Krevor, [Brian.Krevor@boemre.gov](mailto:Brian.Krevor@boemre.gov)