An underwater photograph showing a shipwreck on the ocean floor. A diver is visible in the foreground, and another diver is in the background. The water is clear and blue, with some fish swimming around. The shipwreck is partially covered in coral and other marine life.

Available Information on Known Historic Resources

William Hoffman
Archaeologist
BOEM, Office of Renewable Energy Programs
William.hoffman@BOEM.gov

Section 106 of the National Historic Preservation Act

Requires Federal agencies to take into account the effects of their undertakings on historic properties.

What are Historic Properties?

Historic property means any prehistoric or historic district, site, building, structure, or object included in, or eligible for inclusion in, the National Register of Historic Places.

What kinds of effects?

Physical *destruction* of or damage to all or part of the property;

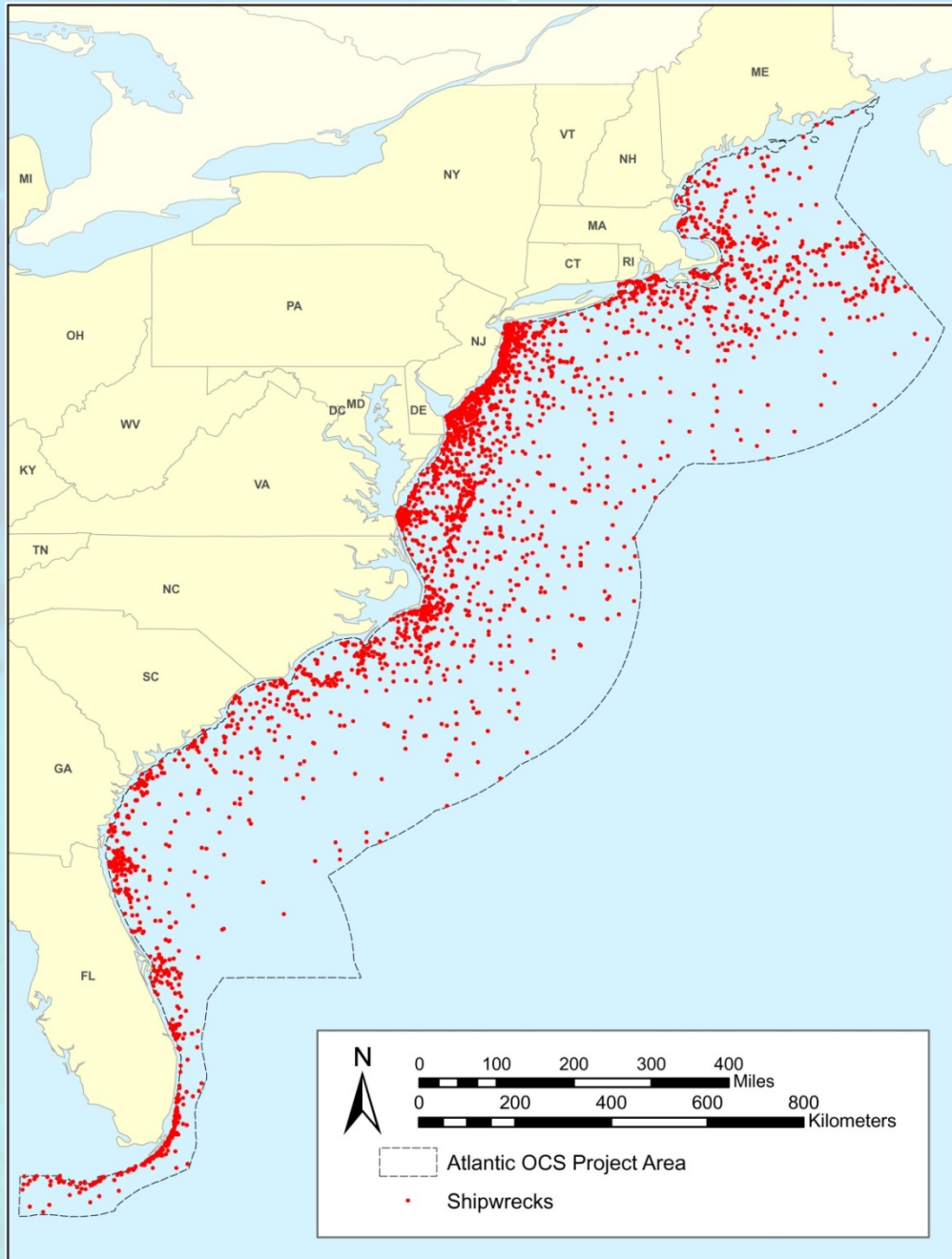
Alteration of a property,

Removal of the property from its historic location;

Change of the character of the property's use or of physical features within the property's setting that contribute to its historic significance;

Introduction of *visual, atmospheric or audible elements* that diminish the integrity of the property's significant historic features;

Neglect of a property which causes its deterioration.



Distribution of known and reported Shipwrecks on the Atlantic OCS.

TRC Environmental Corporation. 2012. Inventory and Analysis of Archaeological Site Occurrence on the Atlantic Outer Continental Shelf. U.S. Department of the Interior, Bureau of Ocean Energy Management, Gulf of Mexico OCS Region, New Orleans, LA. OCS Study BOEM 2012-008. 324pp.



U-352, July 2008. NOAA photo by Steve Sellers.



<http://sanctuaries.noaa.gov/missions/battleoftheatlantic/archives.html>



U-85, July 2008. NOAA photo by Joseph Hoyt.

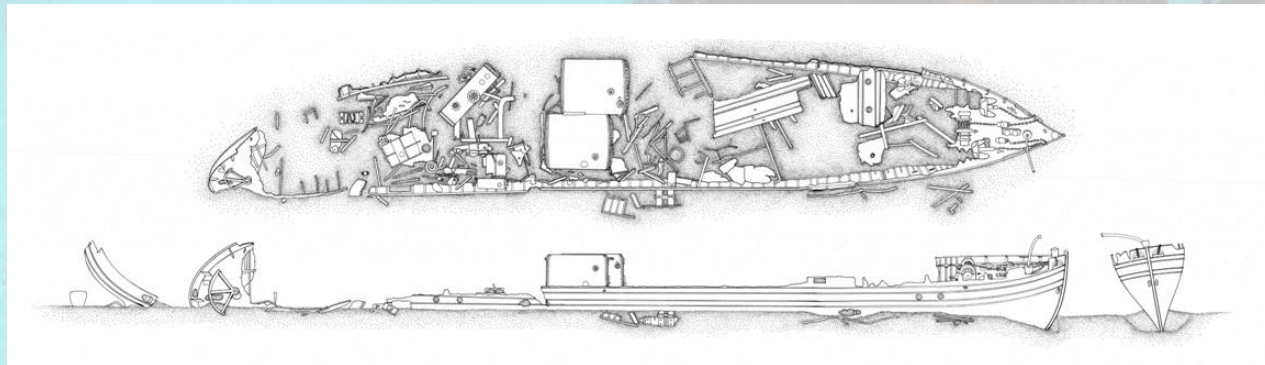


Complete a thorough survey of each site including preparation of a site map and detailed video and photographic documentation;

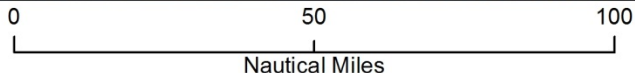
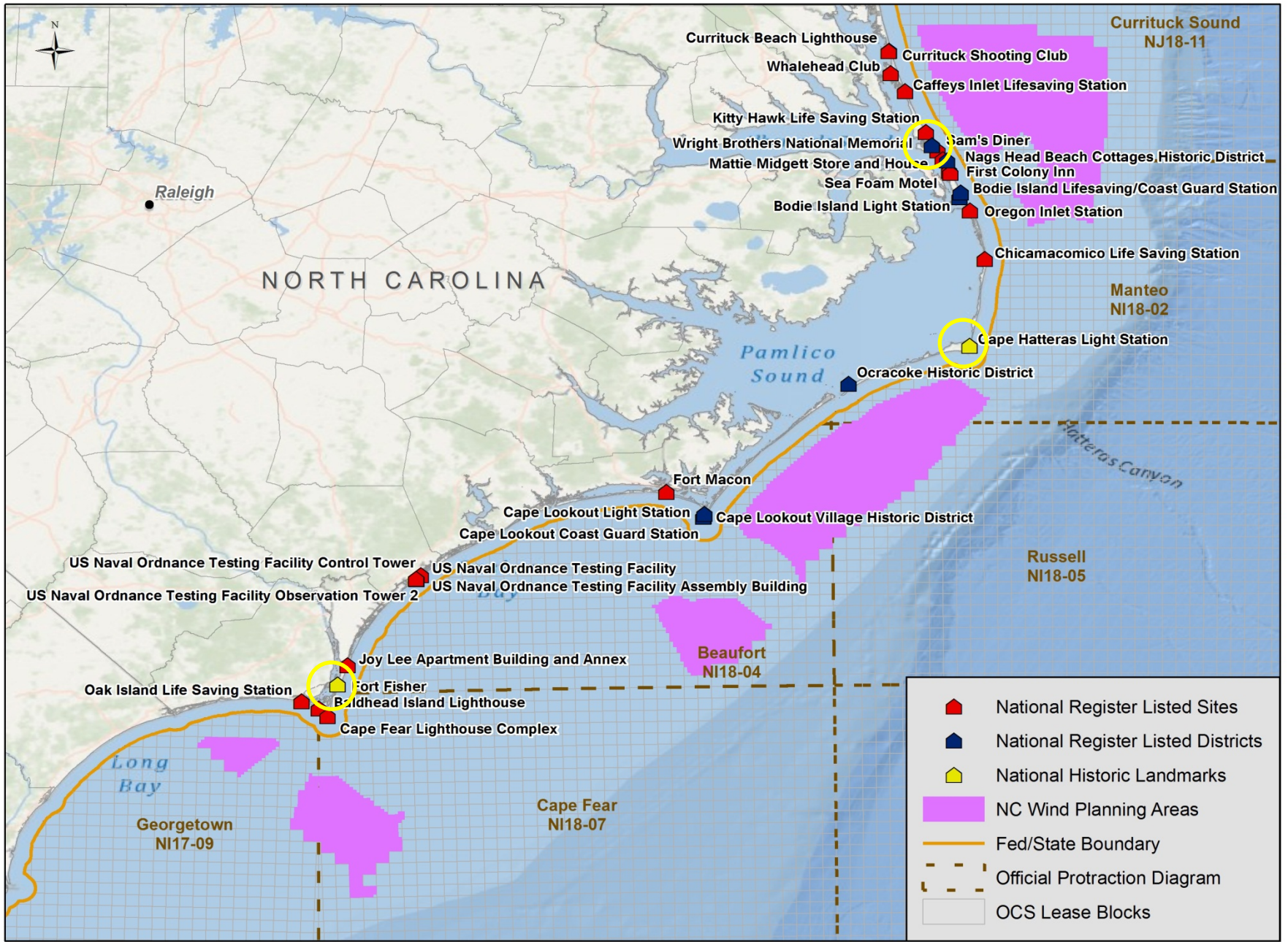
Conduct an analysis of the corrosion potential of the remains of historic shipwreck sites;

Evaluate the potential hazard contaminants that may be contained within the site (fuel and or unexploded munitions).

Assess the historical significance and archaeological integrity of selected sites



NOAA site plan of the *Keshena*



- ▲ National Register Listed Sites
- ⬢ National Register Listed Districts
- ⬢ National Historic Landmarks
- NC Wind Planning Areas
- Fed/State Boundary
- Official Protraction Diagram
- OCS Lease Blocks



National Historic Landmarks are nationally significant historic places designated by the Secretary of the Interior because they possess exceptional value or quality in illustrating or interpreting the heritage of the United States. Fewer than 2,500 historic places bear this national distinction.



U-701, July 2008. NOAA photo by Steve Sellers.