


## BOEM's Renewable Energy Program

South Carolina Renewable Energy Task Force Meeting  
Charleston, SC

March 29, 2012

## Bureau of Ocean Energy Management

- Bureau within the Department of the Interior
- Oversees development of the nation's oil and gas, renewable energy, and other mineral and energy resources on the Outer Continental Shelf (OCS)



## The Regulatory Framework

- President Obama announced the publication of the final Renewable Energy Framework on Earth Day 2009
- **30 CFR Part 585** (i.e., “The Rule”)



## Intergovernmental Task Forces

- Affected State, local, & tribal governments and Federal agencies participate
  - **Does not replace consultation** under existing Federal laws and regulations
- Forum to:
  - **Educate** each other about permitting and statutory responsibilities, and stakeholders' issues
  - **Exchange data** about biological and physical resources, uses, and priorities
  - **Continue dialogue** about renewable energy activities throughout the leasing process
- BOEM considers task force input in our renewable energy leasing decisions

## Intergovernmental Task Forces



- Atlantic Task Force States: Maine, Massachusetts, Rhode Island, New York, New Jersey, Delaware, Maryland, Virginia, North Carolina, **South Carolina**

## Stages of Renewable Energy Development

Planning and Analysis

Leasing

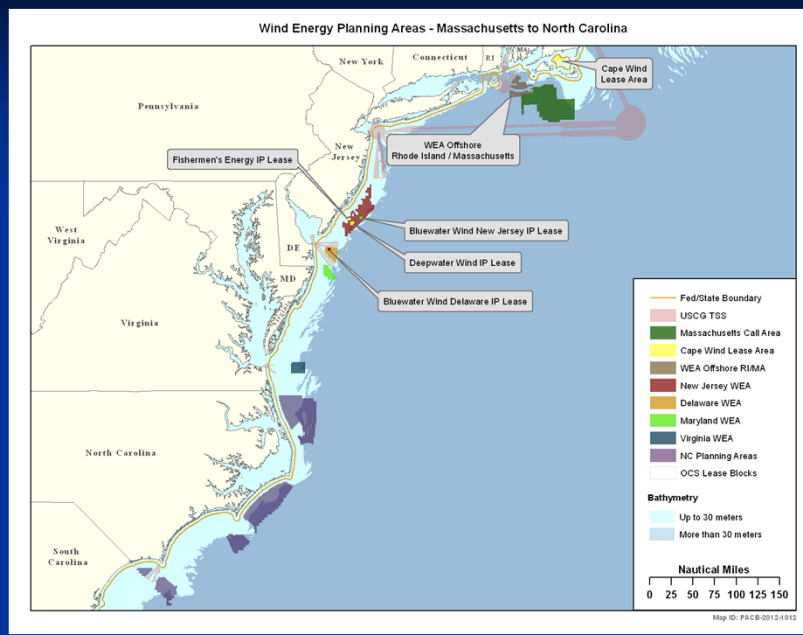
Site Assessment

Commercial Development

## Planning and Analysis

- Coordinate with Task Force members
- Identify area(s) for planning
- Publish public notice
  - Request for Interest (RFI)
  - Call for Information and Nominations (Call)
  - Notice of Proposed Lease Area and Request for Competitive Interest (RFCI)

## Atlantic OCS Wind Areas



## Planning and Analysis, Cont'd

- BOEM will use responses to notice to
  - Determine competitive interest
  - Identify potential area(s) for leasing
  - Gather information about the area identified
- Environmental review

## Planning and Analysis: Environmental Review

- Notice of Intent (NOI) to Prepare an Environmental Assessment (EA)
- Comment period for NOI
- Comments received will help inform **identification of alternatives** to be considered in the EA, as well as the **environmental** and/or **socioeconomic** issues to be analyzed

## The National Environmental Policy Act

### NEPA

- Endangered Species Act
- National Historic Preservation Act
- Clean Air Act
- Coastal Zone Management Act
- E.O. 12898: Environmental Justice
- E.O. 13186: Protection of Migratory Birds
- Marine Mammal Protection Act
- Federal Water Pollution Control Act
- Magnuson-Stevens Act

## Planning and Analysis: Environmental Review

- EA will consider the environmental consequences associated with **issuing commercial wind leases** and **approving site assessment activities** on those leases.
- EA will most likely take 12-14 months.
- If the EA finds that the proposed action has no significant environmental impacts, BOEM will issue a **Finding of No Significant Impact (FONSI)**.

## Environmental and Socioeconomic Resources and Issues

- Air Quality
- Water Quality
- Marine Mammals
- Sea Turtles
- Birds
- Bats
- Seafloor Habitats



- Physical Oceanography
- Coastal Habitats
- Socioeconomics
- Cultural Resources
- Fisheries
- Multiple Use Conflicts

## Environmental Consultations

- Consultations:
  - Endangered Species Act (Section 7)
  - National Historic Preservation Act (Section 106)
  - Government to Government (Federally Recognized Tribes)
  - Magnuson-Stevens Fishery Conservation and Management Act (Essential Fish Habitat)
  - Coastal Zone Management Act (Consistency Determination)
- Clean Air Act General Conformity Determination
- Migratory Birds Treaty Act/Executive Order Analysis

Run concurrently with NEPA process

Planning and Analysis

Leasing

Site Assessment

Commercial Development

Leasing

- Competitive/noncompetitive process
- Informed by environmental review
- Gives the **exclusive right to file a plan**
  - Site Assessment Plan (SAP)
  - Construction and Operations Plan (COP)



Planning and Analysis

Leasing

Site Assessment

Commercial Development

## Site Assessment (and Site Characterization)

- Leaseholder submits a Site Assessment Plan (SAP)
  - BOEM approves, approves with conditions, or rejects
- Site characterization activities
  - Surveys (e.g., geophysical, geotechnical, biological)
- Site assessment activities
  - Meteorological towers and/or buoys

Planning and Analysis

Leasing

Site Assessment

Commercial Development

## Commercial Development

- Leaseholder submits Construction and Operations Plan (COP)
  - Environmental review
  - BOEM approves, approves with conditions, or rejects
- Facility Design Report (FDR)/Facility Installation Report (FIR)
- Installation

## Commercial Development: Environmental Review

- BOEM will likely prepare an Environmental Impact Statement (EIS) for any commercial scale offshore wind energy project proposed in a COP
- EIS will take a minimum of 18-24 months

## Commercial Development: EIS

### Steps:

- Public Scoping Meetings and Comment Period
- Draft EIS
- Public Hearings and Comment Period
- Final EIS
- ROD

## Opportunities to Provide Input *Throughout the Leasing Process*

- Task Force participation
- Stakeholder meetings
- NEPA scoping meetings and hearings
- *Federal Register* notices:
  - Request for Information (RFI); Notice of Proposed Lease Area and Request for Competitive Interest (RFCI); Call for Information and Nominations (Call); Proposed Sale Notice (PSN)
  - Notice of Intent (NOI) to prepare a NEPA document; draft NEPA document

## Environmental Studies

- BOEM has a robust environmental studies program.
- Some relevant studies include:
  - Atlantic Region Wind Energy Development: Recreation and Tourism Economic Baseline Development
  - Atlantic Offshore Wind Energy Development: Public Attitudes, Values, and Implications for Tourism and Recreation
  - Visualization Study for Offshore North Carolina
  - Renewable Energy Visual Evaluations
  - Potential for Interactions between Endangered and Candidate Bird Species with Wind Facility Operations on the Atlantic OCS
  - Effects of EMF on Transmission Lines on Elasmobranchs and Other Marine Species

Complete list of ongoing and completed studies can be found at:

<http://boem.gov/Environmental-Stewardship/Environmental-Studies/Renewable-Energy/Renewable-Energy.aspx>

## Questions?

- Erin Trager  
South Carolina Project Coordinator  
703-787-1713  
[Erin.trager@boem.gov](mailto:Erin.trager@boem.gov)
- Brian Krevor  
South Carolina Environmental Lead  
703-787-1346  
[Brian.krevor@boem.gov](mailto:Brian.krevor@boem.gov)
- On the Web: [www.boem.gov](http://www.boem.gov)  
Click [Renewable Energy Programs](#) → [State Activities](#)