



BOEM's Offshore Renewable Energy Process: North Carolina

Maureen A. Bornholdt

Program Manager

Office of Renewable Energy Programs

Bureau of Ocean Energy Management



Bureau of Ocean Energy Management

- Bureau within the Department of the Interior
- Oversees development of the nation's oil and gas, renewable energy, and other mineral and energy resources on the Outer Continental Shelf



BOEM's Staged Offshore Wind Authorization Process

Planning and Analysis

Leasing

Site Assessment

Construction and Operations

Stage 1: Planning and Analysis

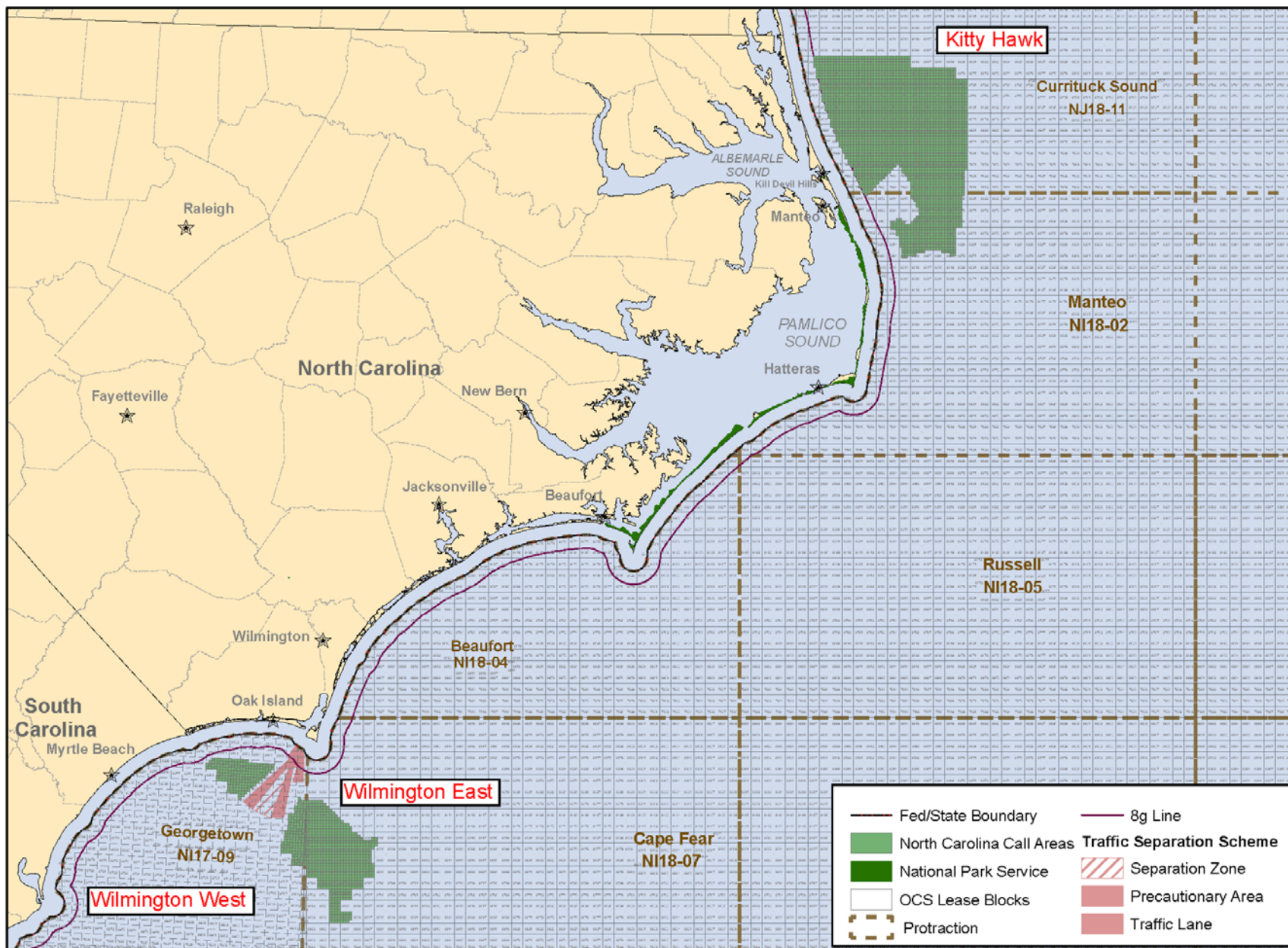
- Establish Intergovernmental Task Force, engage stakeholders
- Publish Call for Information and Nominations (Call) and Notice of Intent to Prepare an Environmental Assessment (EA)
- Announce Area Identification
- Conduct environmental compliance reviews

BOEM's North Carolina Intergovernmental Task Force

- Consists of relevant Federal agencies and affected state, local, and tribal officials
- Established in January 2011
- Has met four times
- Helped BOEM delineate areas included in the NC Call for Information and Nominations (Call)

What is a Call?

- Published in the *Federal Register*
- Requests information for BOEM to consider in its decision-making process - *not* a decision to lease or allow commercial wind development in the area(s) identified
- 45-day comment period
 - NC Call comment period closes January 28



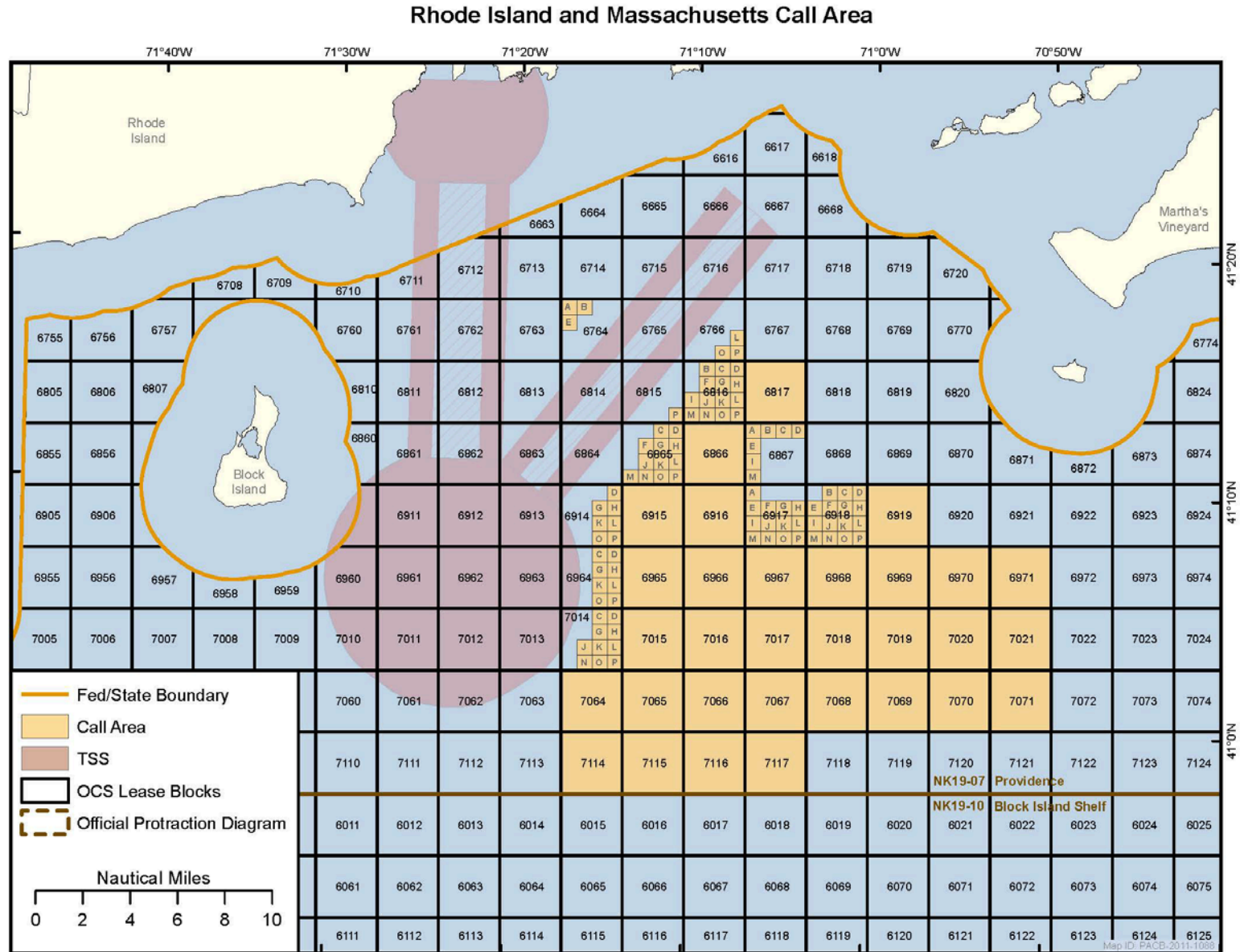
What is Area Identification (ID)?

- Process to resolve any remaining issues with commercial wind development in the Call area(s) prior to BOEM initiating environmental reviews
 - Environmental reviews at this stage don't consider commercial wind development (only vessel survey work and resource assessment activities)
 - BOEM does consider potential impacts of commercial wind development during Area ID
- Area delineated is a Wind Energy Area (WEA)
- Comments received during Call comment period are critical to this process

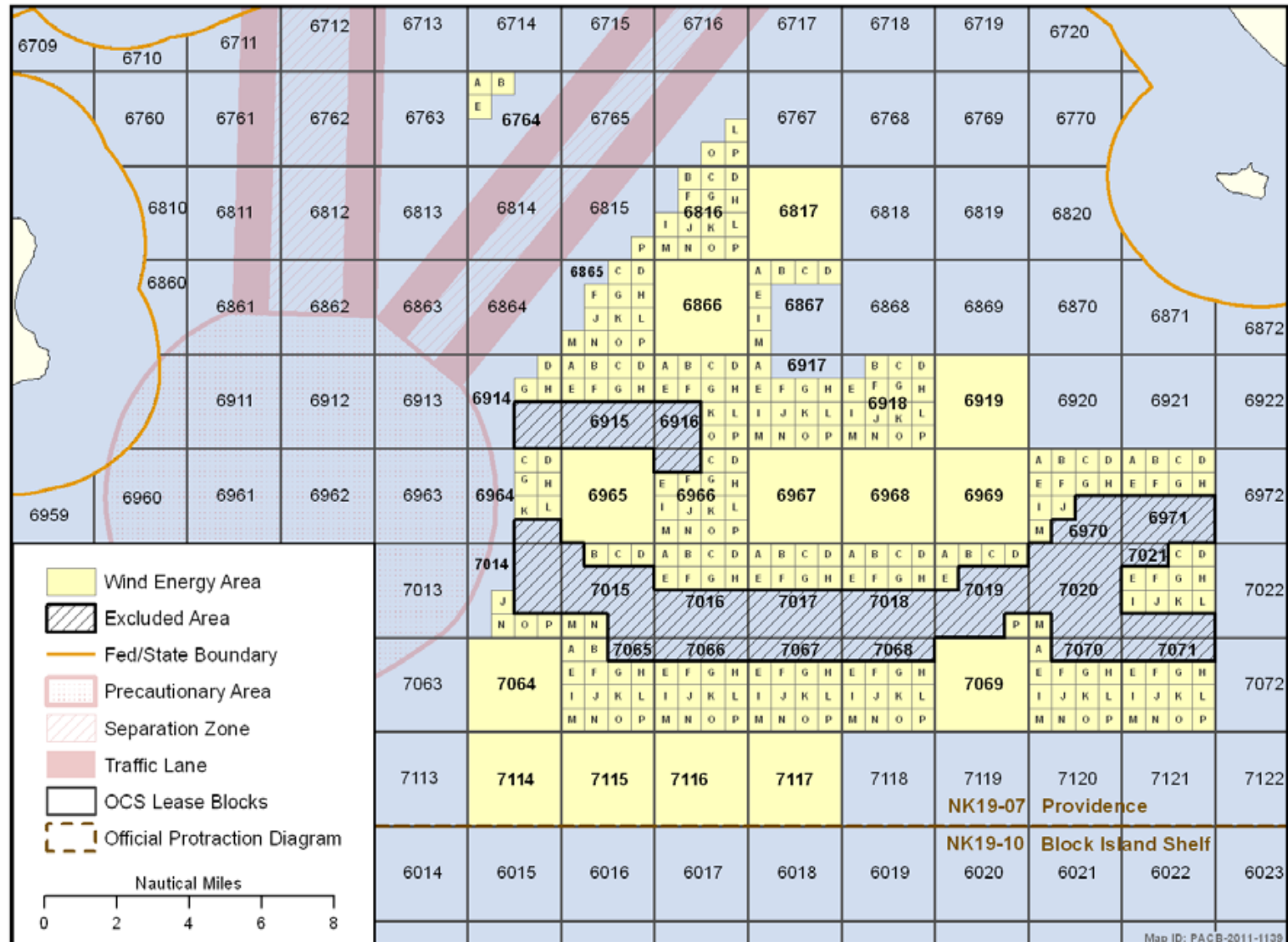
Area Identification Success: RI/MA WEA

- Issue: Potential conflicts between commercial wind development in RI/MA Call area and commercial fishing
- Resolution: Removal of fishing grounds (“Cox’s Ledge”) from further consideration for commercial wind leasing

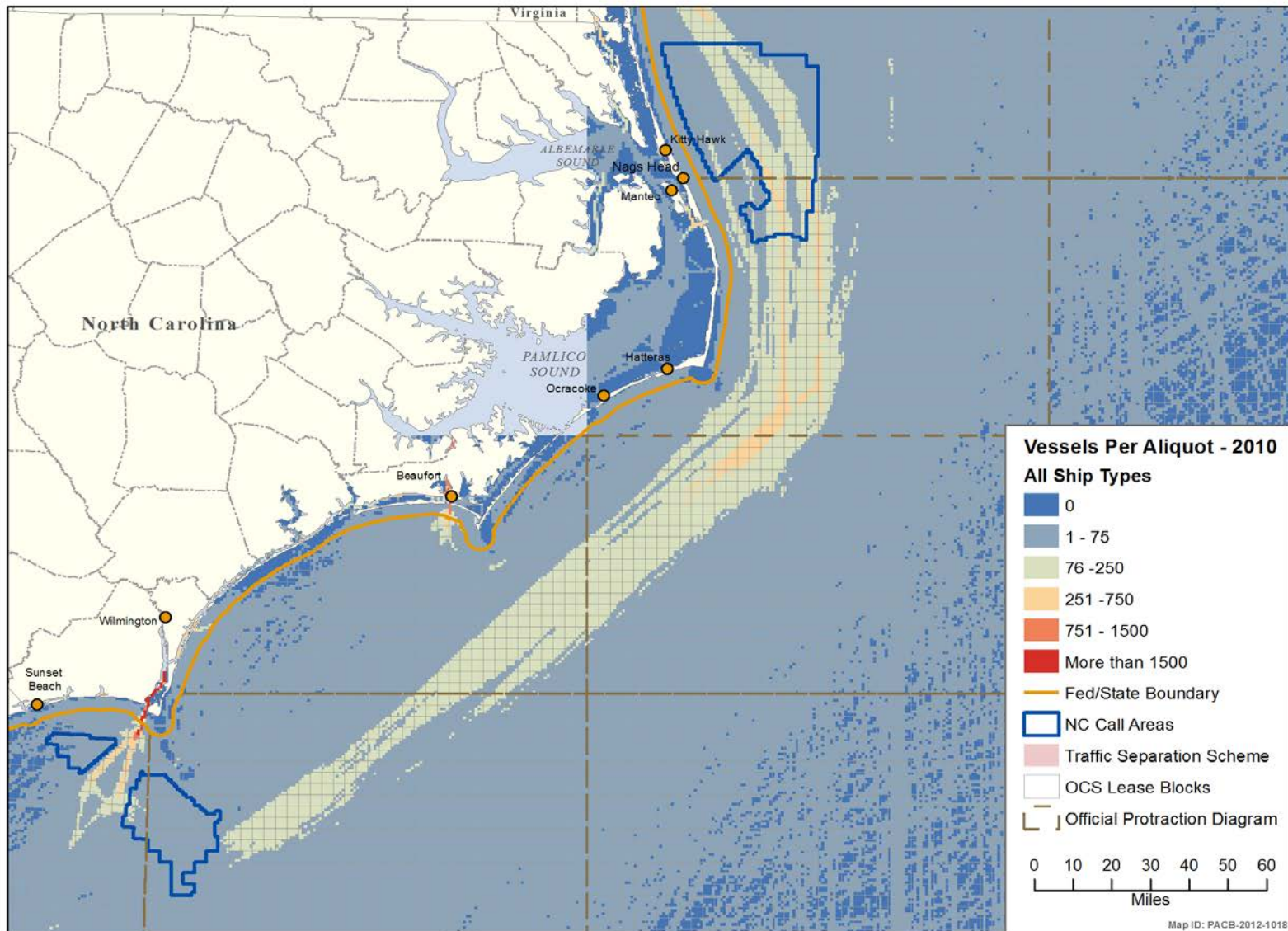
RI/MA Before Area ID



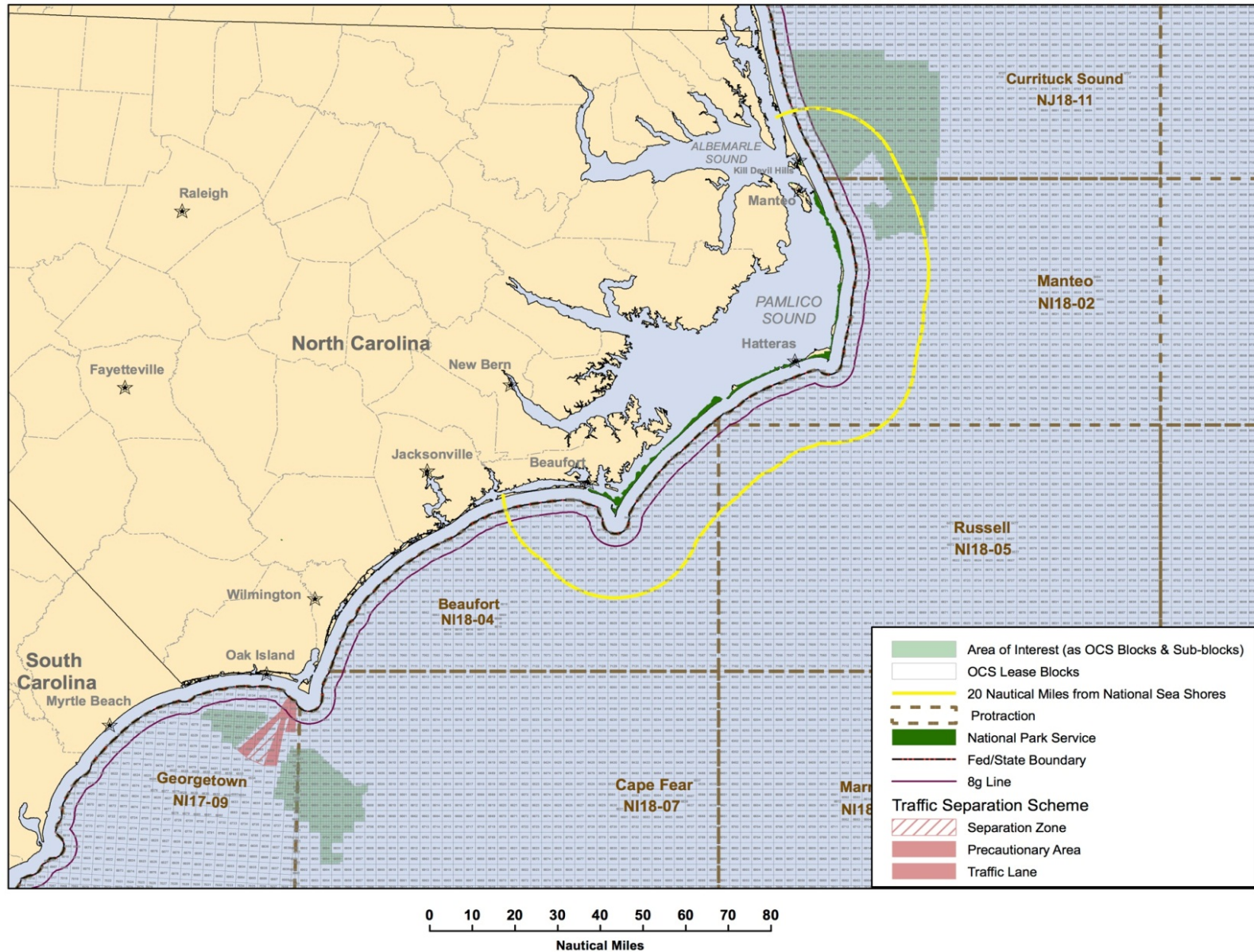
RI/MA After Area ID



NC Area ID Issue: Vessel Traffic



NC Area ID Issue: Viewshed

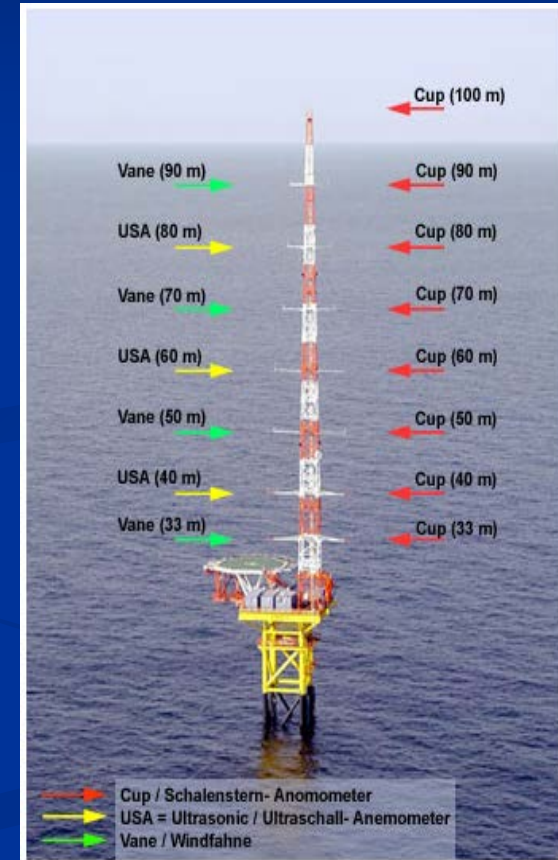


Stage 2: Leasing

- Publish leasing notices
 - Determination of No Competitive Interest (Noncompetitive)
 - Proposed and Final Sale Notices (Competitive)
- Issue Lease(s)
 - Conveys right to submit plans for BOEM's approval
 - After environmental reviews are complete
 - Negotiate with single developer (Noncompetitive)
 - Hold lease sale (Competitive)

Stage 3: Site Characterization and Assessment

- Lessee will conduct surveys in the lease area (**site characterization**)
- If lessee intends to install data collection facility (meteorological tower or buoy) it must submit a Site Assessment Plan (SAP) to BOEM (**site assessment**)
- BOEM conducts environmental and technical reviews of the lessee's SAP and approves, disapproves, or approves with modifications
- Lessee has 5 years to conduct these activities



Stage 4: Commercial Development

- The lessee must submit a Construction and Operations Plan (COP) in the first five years of the lease
- COP provides details of the proposed project (turbine layout, size, etc.)
- BOEM must approve the COP before the lessee may construct and operate
- Operations term is typically 25 years



Opportunities for Public Comment

- All four stages provide for stakeholder engagement and public comment
 - Stakeholder meetings
 - Task Force meetings: public Q&A sessions
 - NOI to prepare an EA or EIS
 - Scoping meetings for EISs
 - Hearings and comment periods for draft EISs
 - Public review periods for EAs
 - Proposed Sale Notice comment periods

Goals for Today's Meeting

- Provide information about BOEM's renewable energy process and NC planning efforts to date
- Identify issues and resources to be analyzed, and alternatives to be considered, in the Environmental Assessment
- Inform BOEM's Area ID, especially in the areas of:
 - Vessel traffic & navigational safety
 - Viewshed impacts

Questions?

Thank you!

Maureen A. Bornholdt
Maureen.Bornholdt@boem.gov
(703) 787-1300