

BOEM North Carolina Renewable Energy Task Force Meeting

August 2, 2012

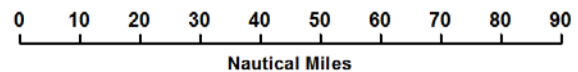
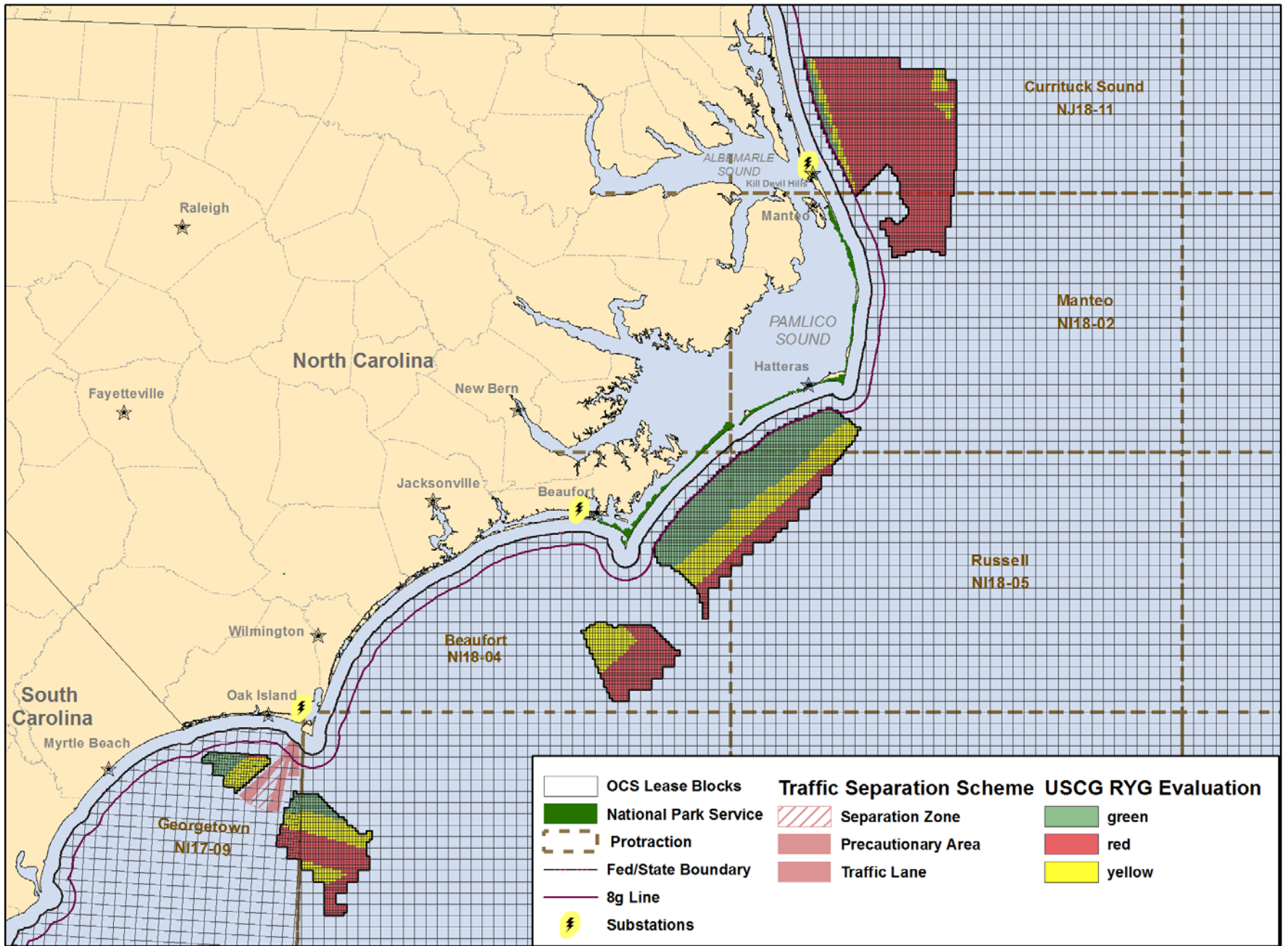
Maritime Working Group (MWG)

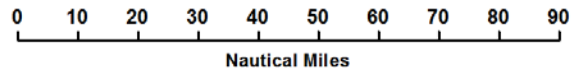
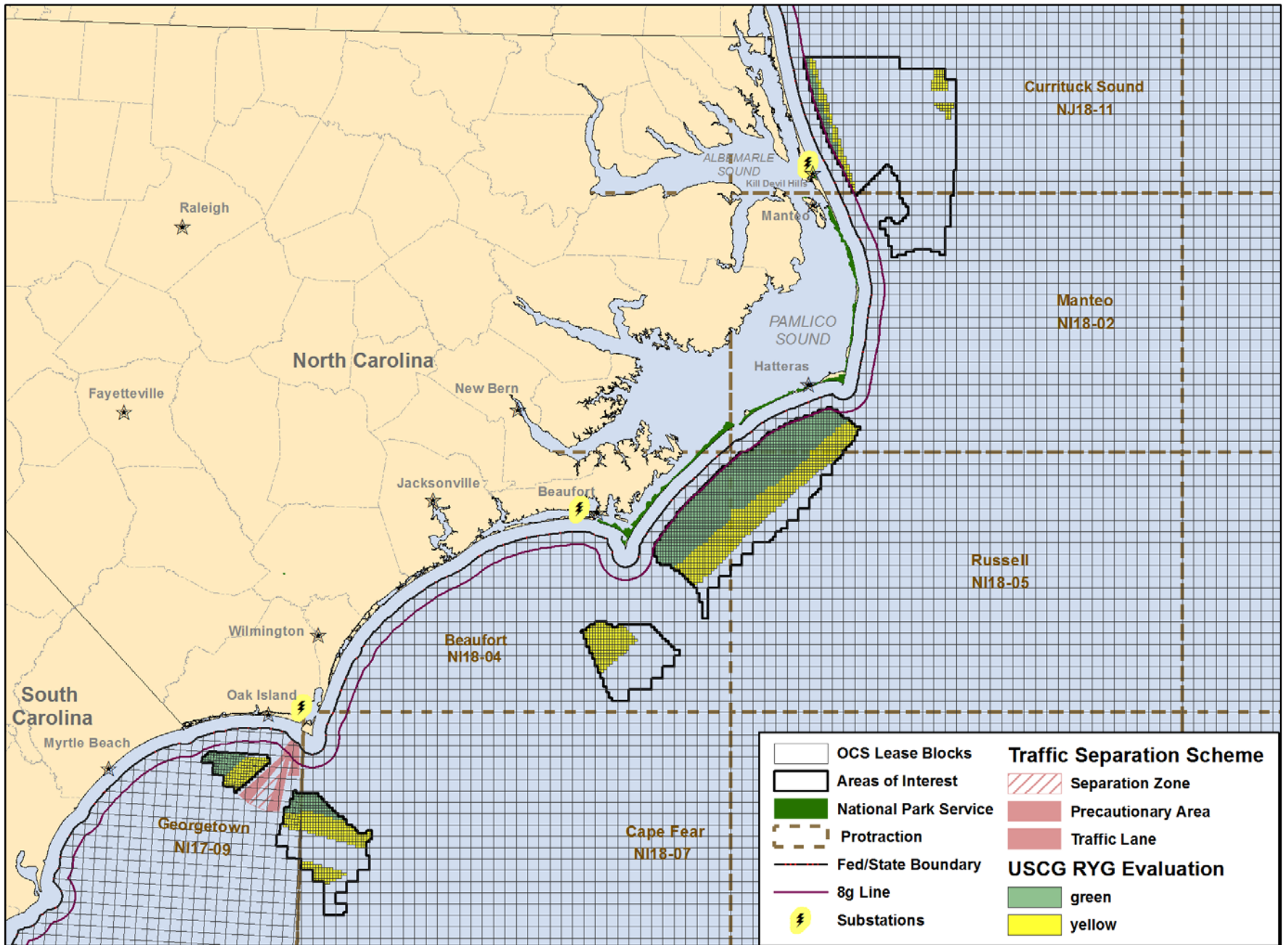
Combining Quantitative Analysis and Applied Knowledge

William Waskes, BOEM

BOEM North Carolina Renewable Energy Task Force
Meeting

August 2, 2012



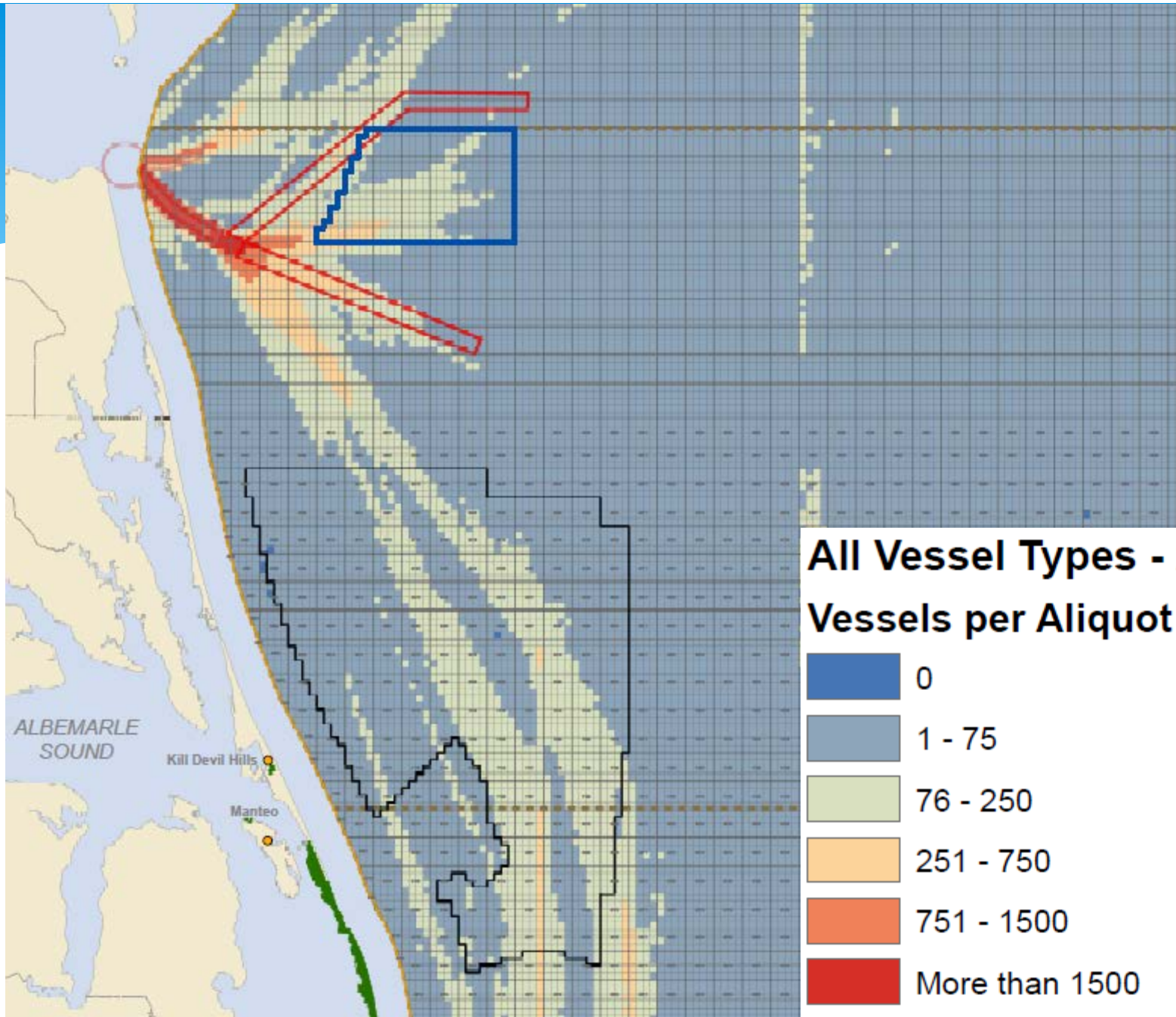


Maritime Working Group (MWG)

Objectives

- * Build on vessel movement data conducted to date and integrate maritime stakeholder Input
- * Attempt to:
 - * Distinguish traditional shipping routes
 - * Delineate appropriate shipping corridors, widths and buffers, if possible
 - * Develop potential routing measure recommendations





Maritime Working Sub-Group: North

- * Potential Members
 - * Virginia Port Authority (VPA)
 - * Virginia Maritime Association (VMA)
 - * USCG, BOEM, NOAA
 - * State of North Carolina
 - * American Waterways Operators
 - * Mariners Advisory Committee
- * Meeting Base: Norfolk/Hampton Roads



Maritime Working Sub-Group: South

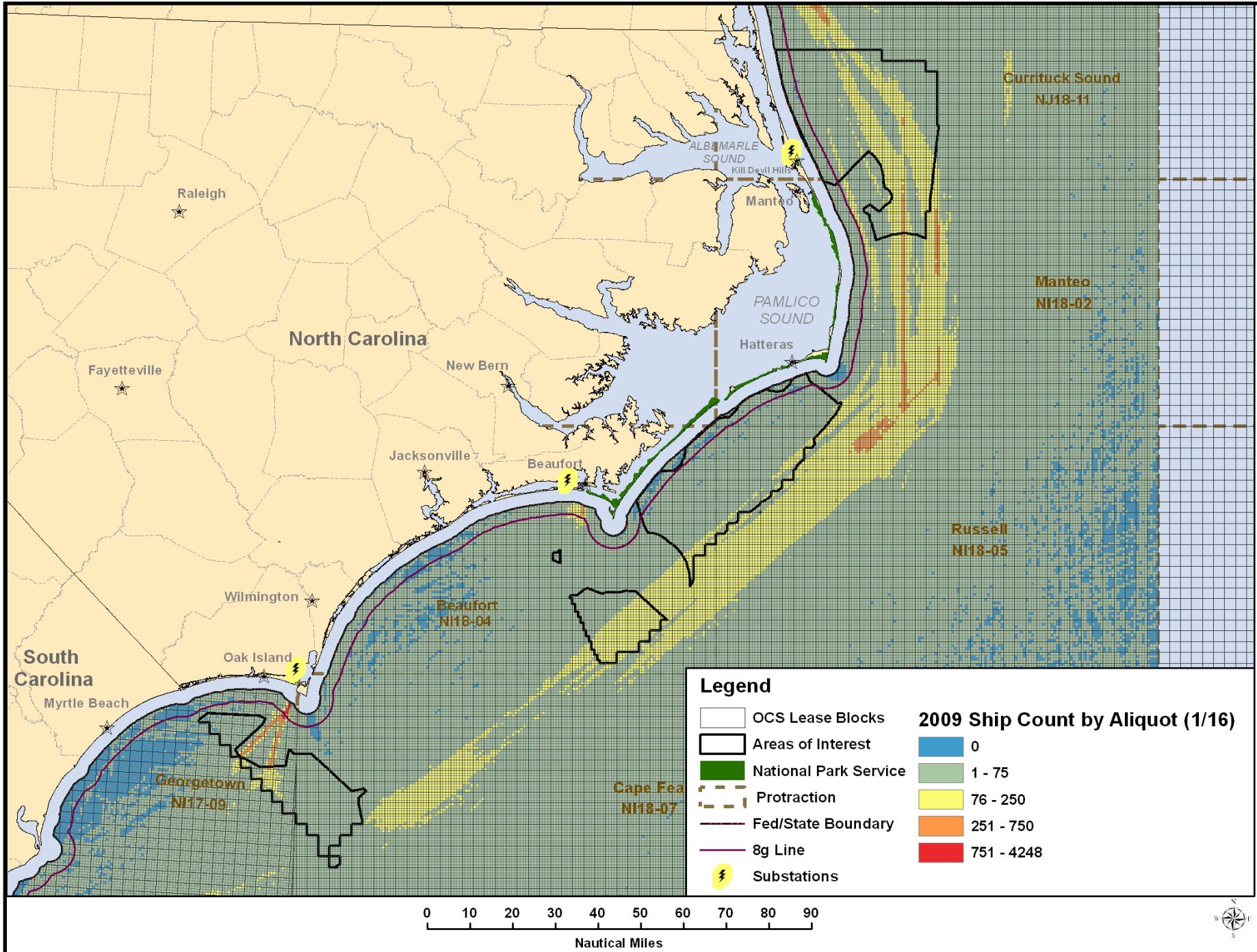
- * Potential Members:
 - * Wilmington Port Authority (WPA)
 - * American Waterways Operators (AWO)
 - * USCG, BOEM, NOAA
 - * State of North Carolina
 - * Pilots Association
 - * Individual Carriers
- * Meeting Base: Wilmington, North Carolina



Build on Existing Data and Analytics

- * Available BOEM Products
 - * 2009 Density Vessel Plot – Atlantic Coast
 - * All Vessels & Vessel Types
- * Data (ArcGIS Geodatabase Format)
 - * 2009 1-minute Averaged AIS Data
 - * 2010 1-minute Averaged AIS Data

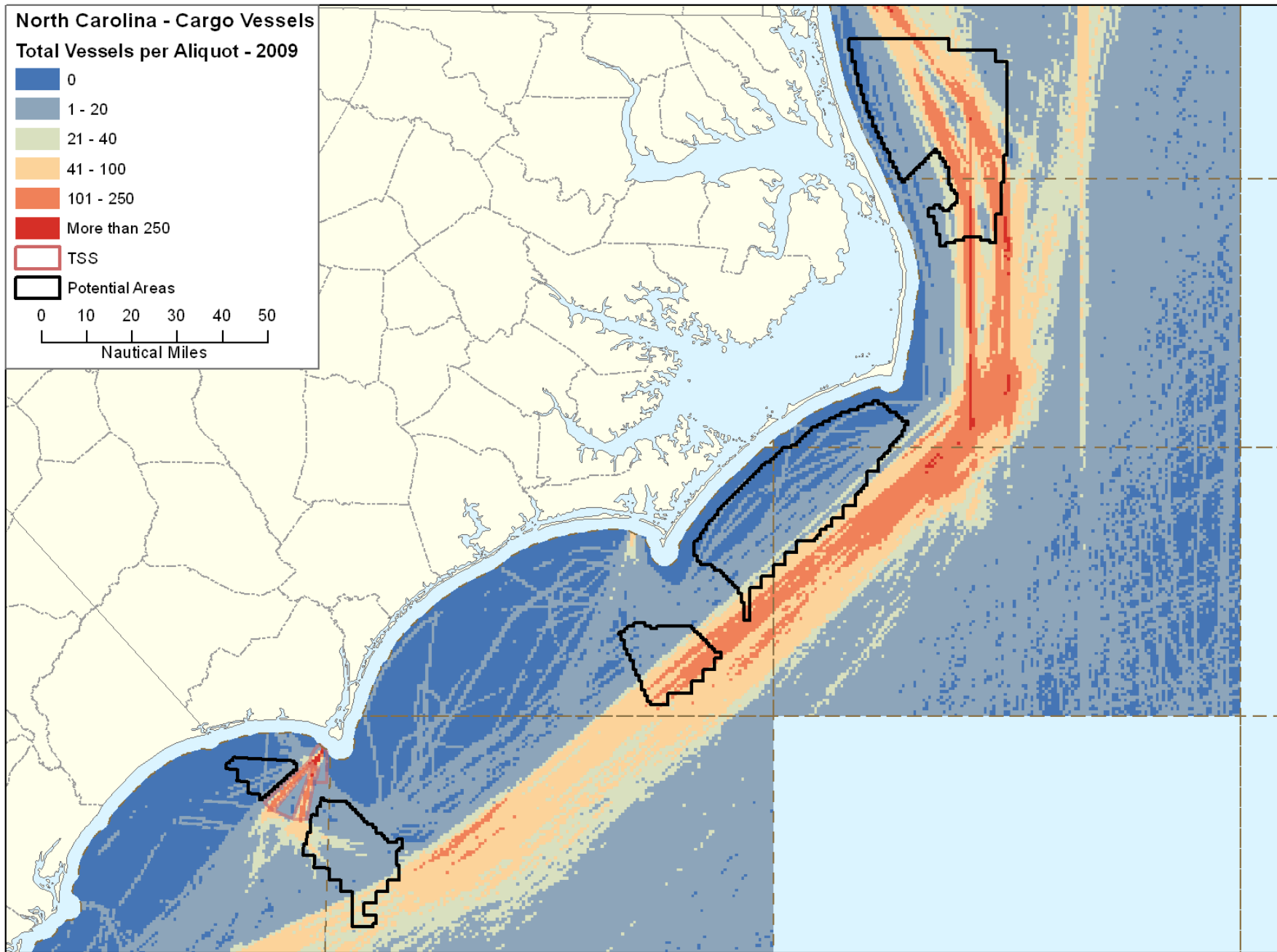
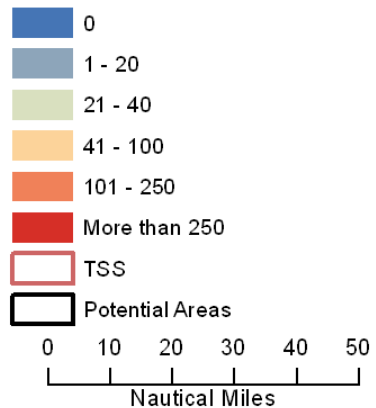




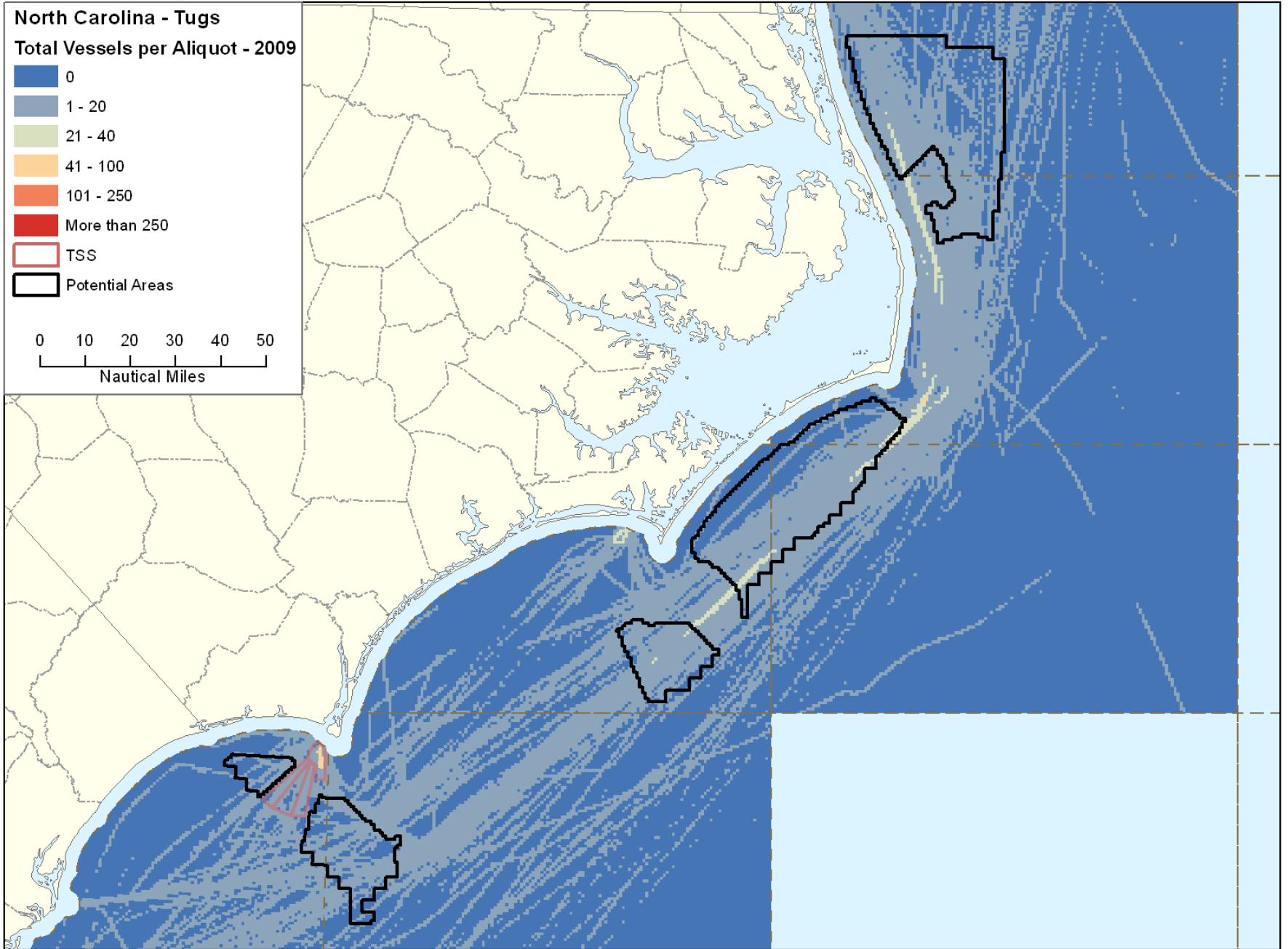
Cargo Vessel Count - 2009

North Carolina - Cargo Vessels

Total Vessels per Aliquot - 2009



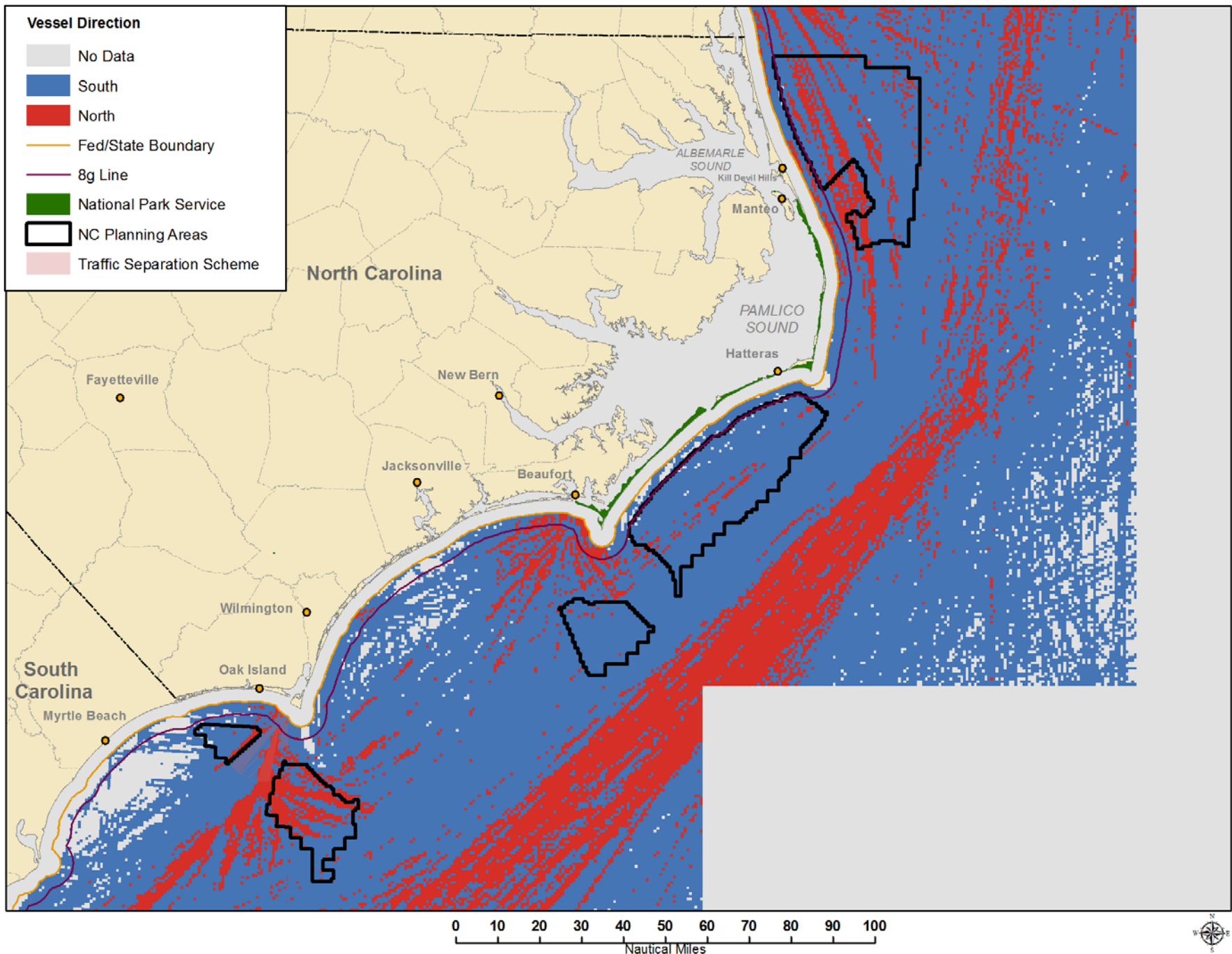
Tugs - 2009

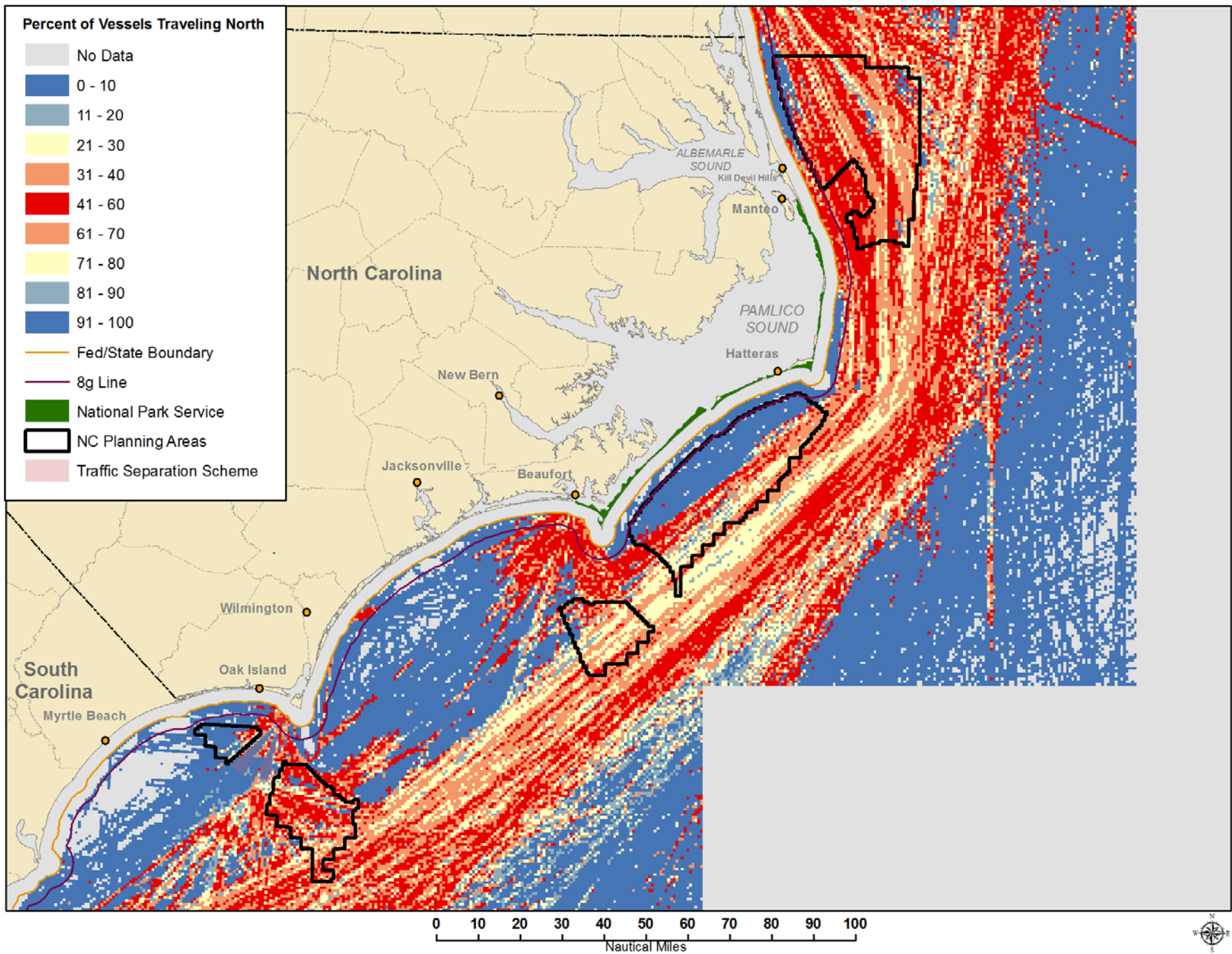


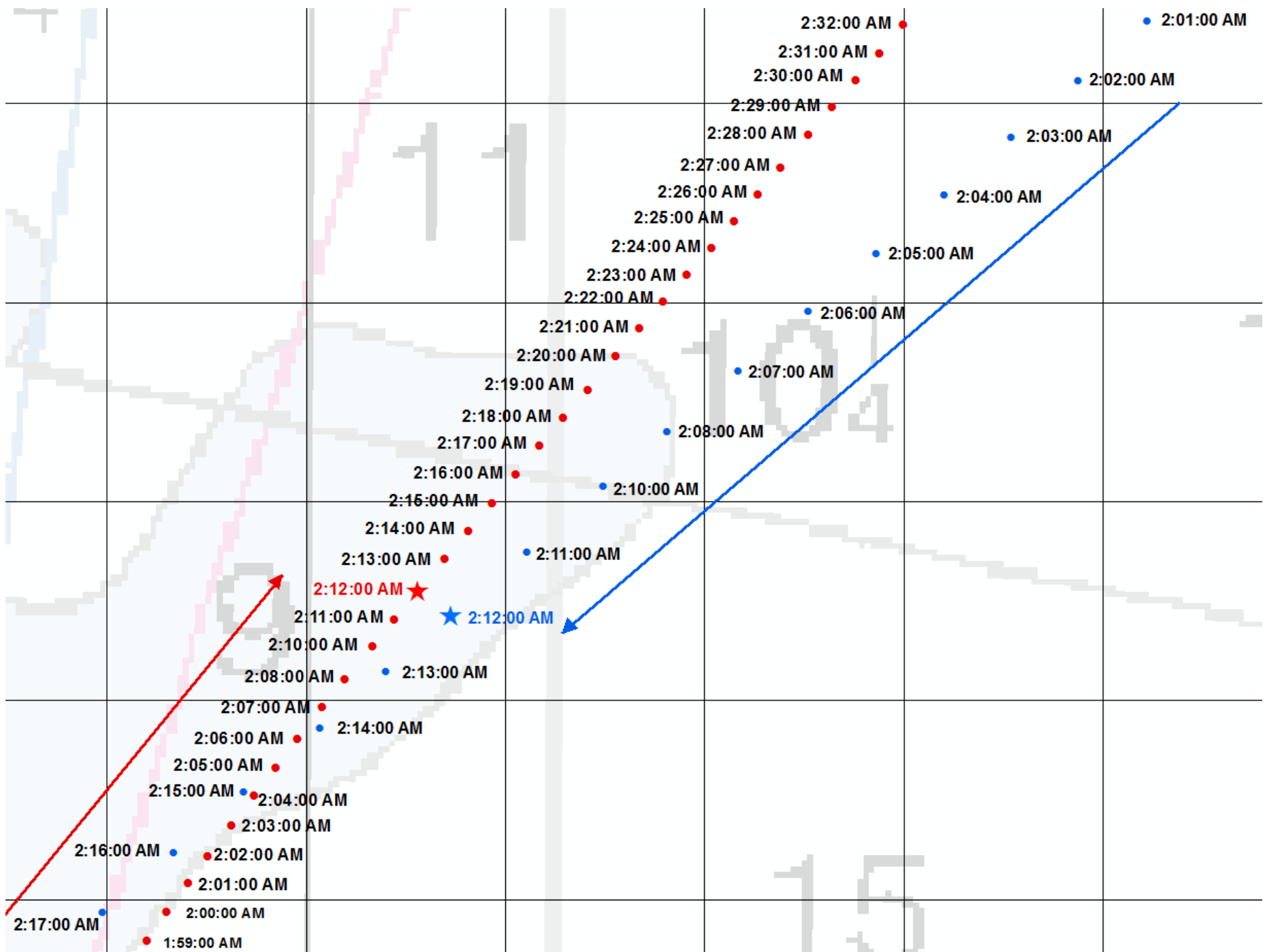
Conduct Additional Analytics Identified by Maritime Community

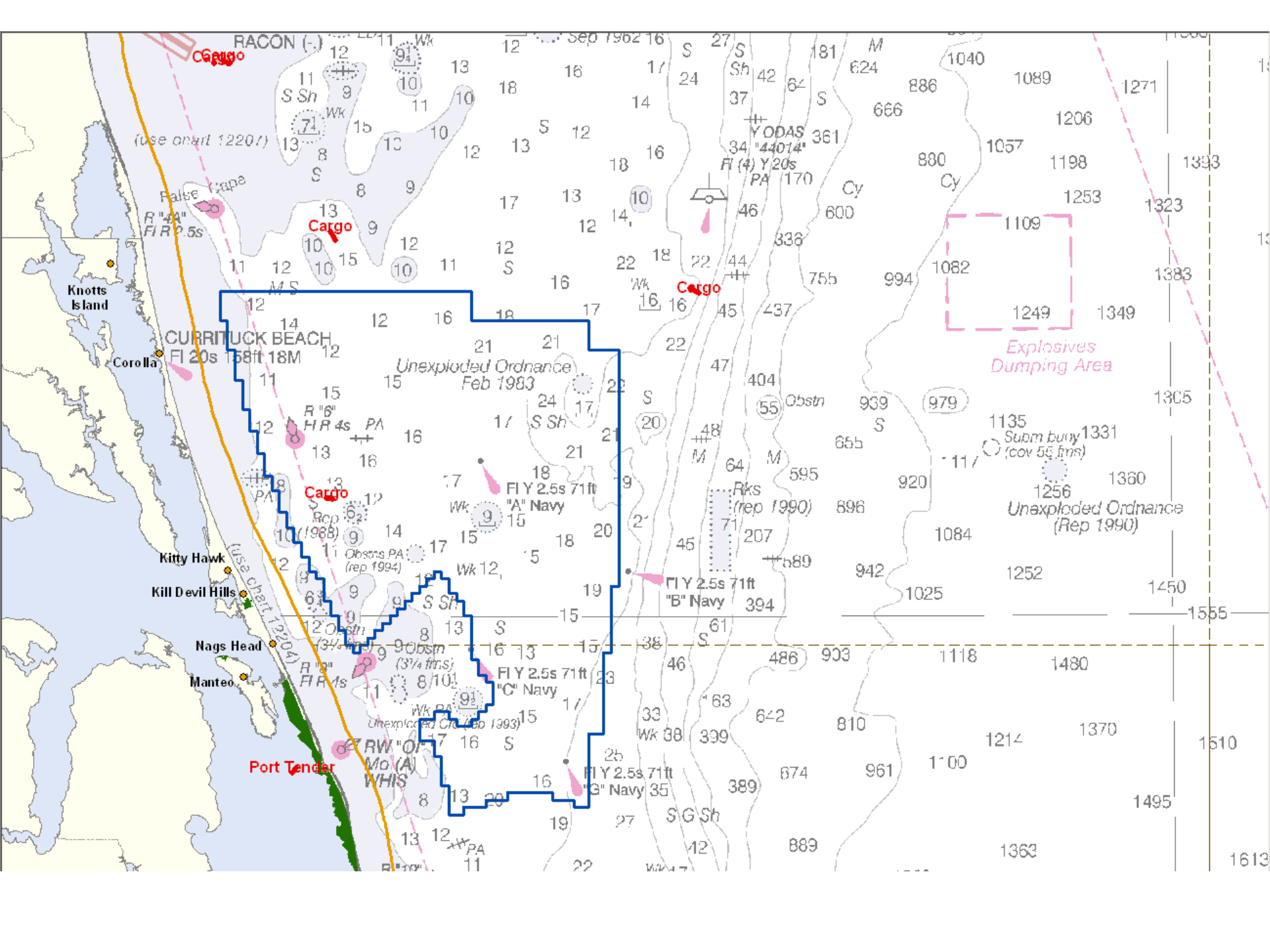
- * 2010 Density Plots
- * 2009 & 2010 Directional Analysis*
- * 2009 & 2010 Proximity Analysis*
- * 2009 & 2010 Bathymetry Correlations
- * Increment Weather Behavior Analysis*

**All Ships, Vessel Type (Cargo, Tanker, Tugs, Tows, etc.)*









Next Steps

- * Complete outreach and identification of key maritime stakeholders
- * Continue AIS data analysis
- * Hold first set of meetings (Wilmington, NC and Norfolk Area) within the next 30-45 days.
- * Validate Existing Data and Identify new information needs
- * Reconvene and develop recommendations

Questions



Towing - 2009

