

74°30'W

74°15'W

74°0'W

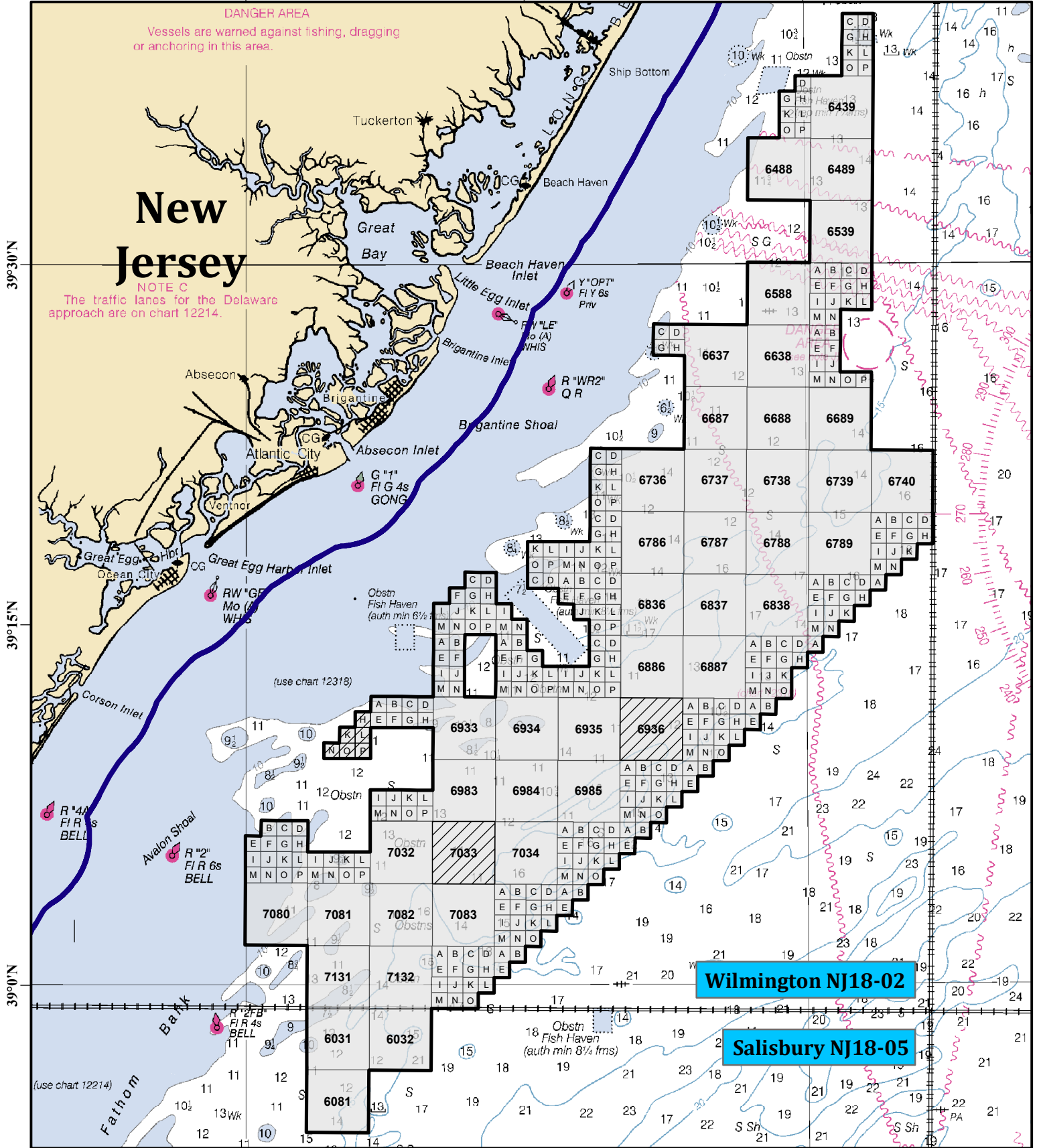
DANGER AREA

Vessels are warned against fishing, dragging or anchoring in this area.

New Jersey

NOTE C



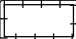

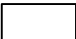

The traffic lanes for the Delaware approach are on chart 12214.



Wilmington NJ18-02

Salisbury NJ18-05

Legend

-  New Jersey Call Area
-  Interim Policy Leases
-  Protraction
-  Sub Block (1/16)
-  OCS Blocks
-  Federal State Boundary

0 6 12 Kilometers



0 6 12 Nautical Miles