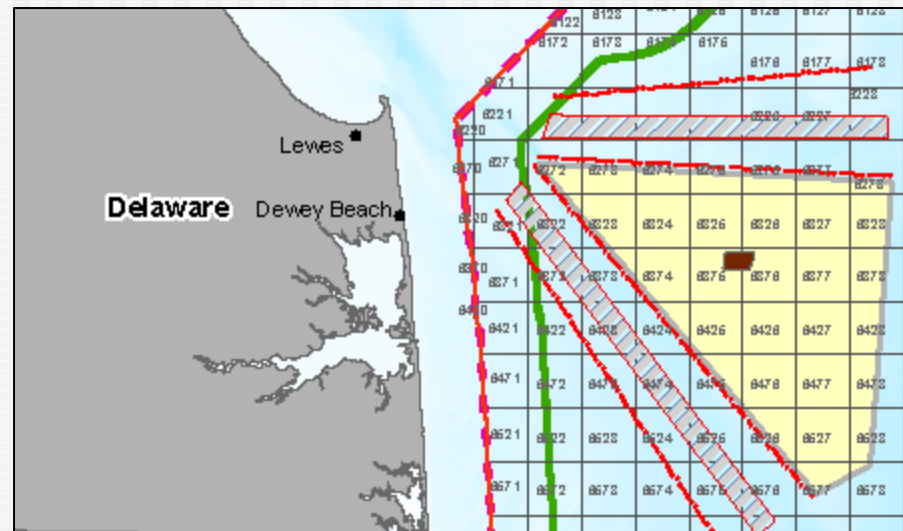


Request for Interest in Renewable Energy Leasing Offshore Delaware

Discussion of Responses Received



Preview

- Overview of all responses received
- Commercial indications of interest
- Non-government comments
- Government comments
 - NOAA Fisheries Habitat Conservation
 - Coast Guard
 - Department of Defense

Overview of Comments

- 8 submissions total
 - 2 commercial indications of interest
 - 1 nonprofit
 - 2 waterways users
 - 3 Federal government

Commercial Indications of Interest

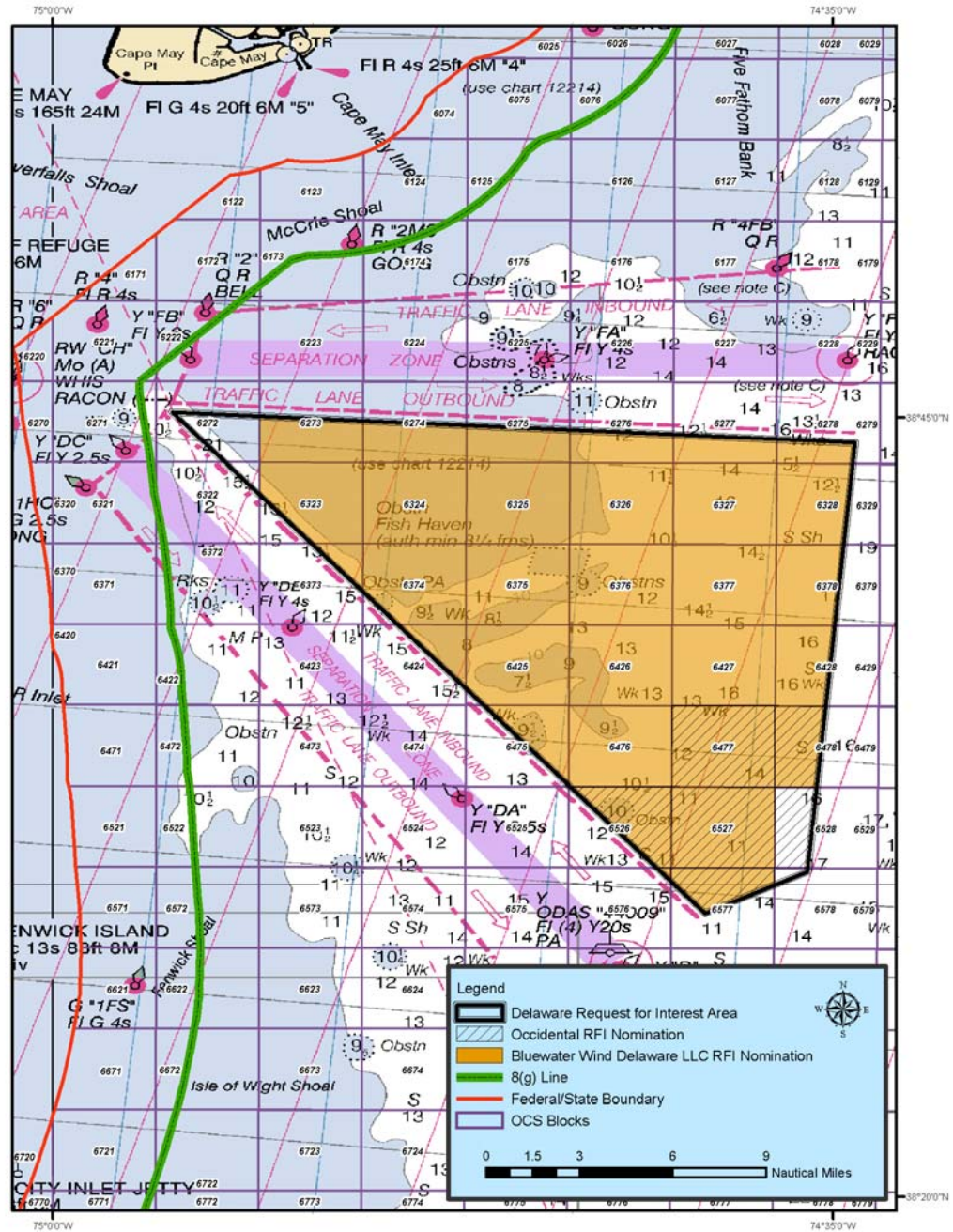
NRG Bluewater

- **11 Full OCS Blocks:** 6324, 6325, 6326, 6327, 6375, 6376, 6377, 6426, 6427, 6477, 6527
- **20 Partial OCS Blocks:** 6274, 6275, 6276, 6277, 6278, 6328, 6374, 6424, 6425, 6475, 6476, 6273, 6323, 6373, 6378, 6428, 6478, 6526, 6576, 6577

Commercial Indications of Interest, Cont'd

Occidental Development & Equities, LC

- 2 Full OCS Blocks: 6527, 6477
- 4 Partial OCS Blocks: 6526, 6577, 6478, 6528



Non-Government Comments

- The American Waterways Operators
- Dann Marine Towing
- The Nature Conservancy

The American Waterways Operators

- Potential barrier to traditional navigation routes
- Potential obstruction to safe operation
 - Recommends Coast Guard expand the proposed TSS buffer from 500m to at least 800m
- Between Sept. and May, eastern navigation routes can be impacted by volatile weather/sea conditions, forcing a western diversion
 - This change in route could contribute to already high levels of maritime traffic congestion and increase safety risk

Dann Marine Towing

- Vessels regularly use area between TSSs
- Development could cause
 - Diversion of traffic to east or west, adding 5-12 nm to routes
 - Higher sea states could cause western diversion, increasing traffic density at entrance to the Bay and increasing chance of marine incident

Dann Marine Towing

- Potential economic impact
 - Voyage time could increase 1-4 hours depending on weather conditions and sea state
 - Increased voyage time would add to cost of fuel and goods
 - Emissions and other incidental charges could increase from longer trips

The Nature Conservancy

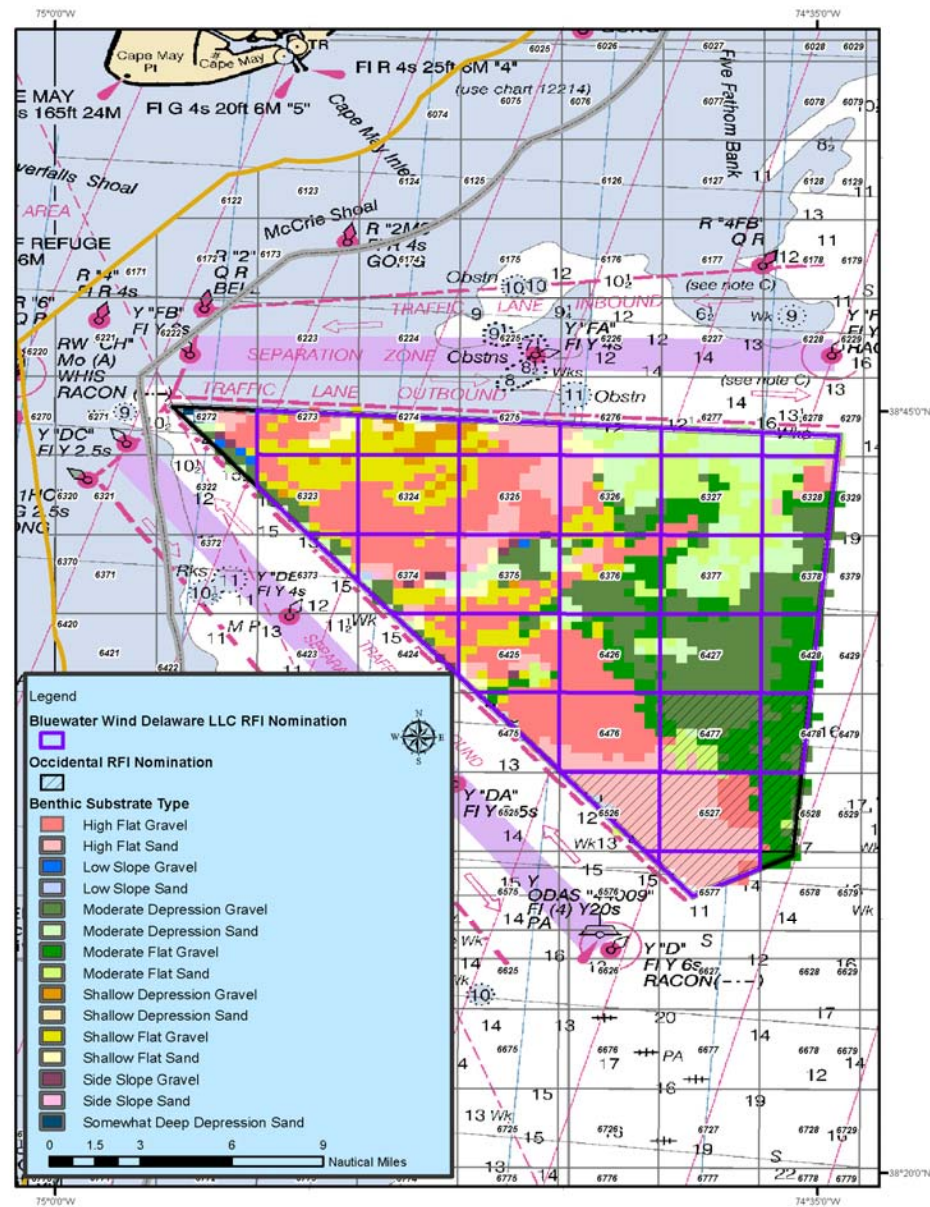
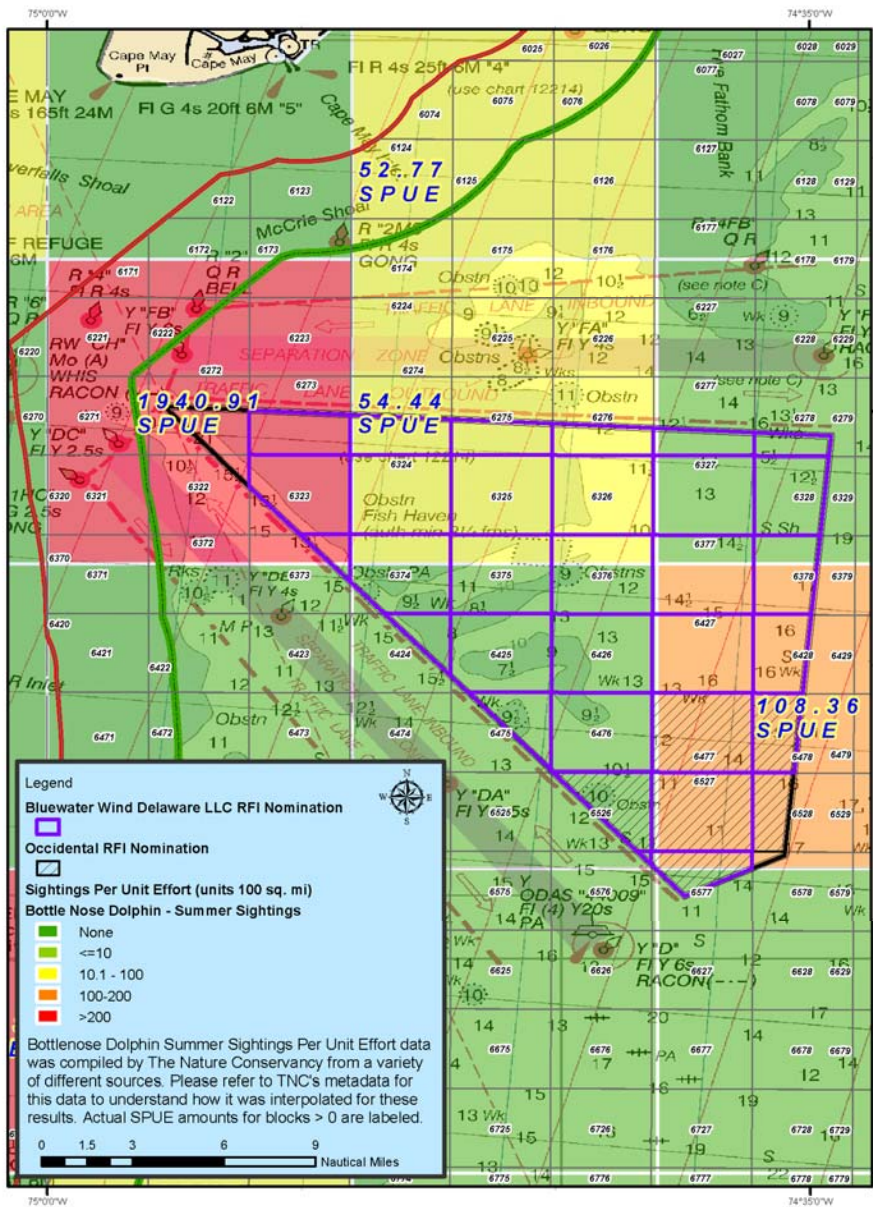
- RFI area lies within:
 - New England/Mid-Atlantic Bird Conservation Region
 - Western Hemisphere Shorebird Reserve Network Site of Hemispheric Importance
 - Ramsar Wetland of International Importance
 - Globally important Bird Area as designated by the American Bird Conservancy and National Audubon

The Nature Conservancy

- Recommendations for data consultation, collection, and further environmental studies
 - Benthic habitats
 - Migratory birds
 - Marine mammals

The Nature Conservancy

- Northwest Atlantic Marine Ecoregional Assessment (NAM-ERA)
 - Released publicly Spring 2010
 - Covers area from Cape Hatteras to Bay of Fundy
 - Characterizes marine resources and human uses
 - www.nature.org/easternusmarine

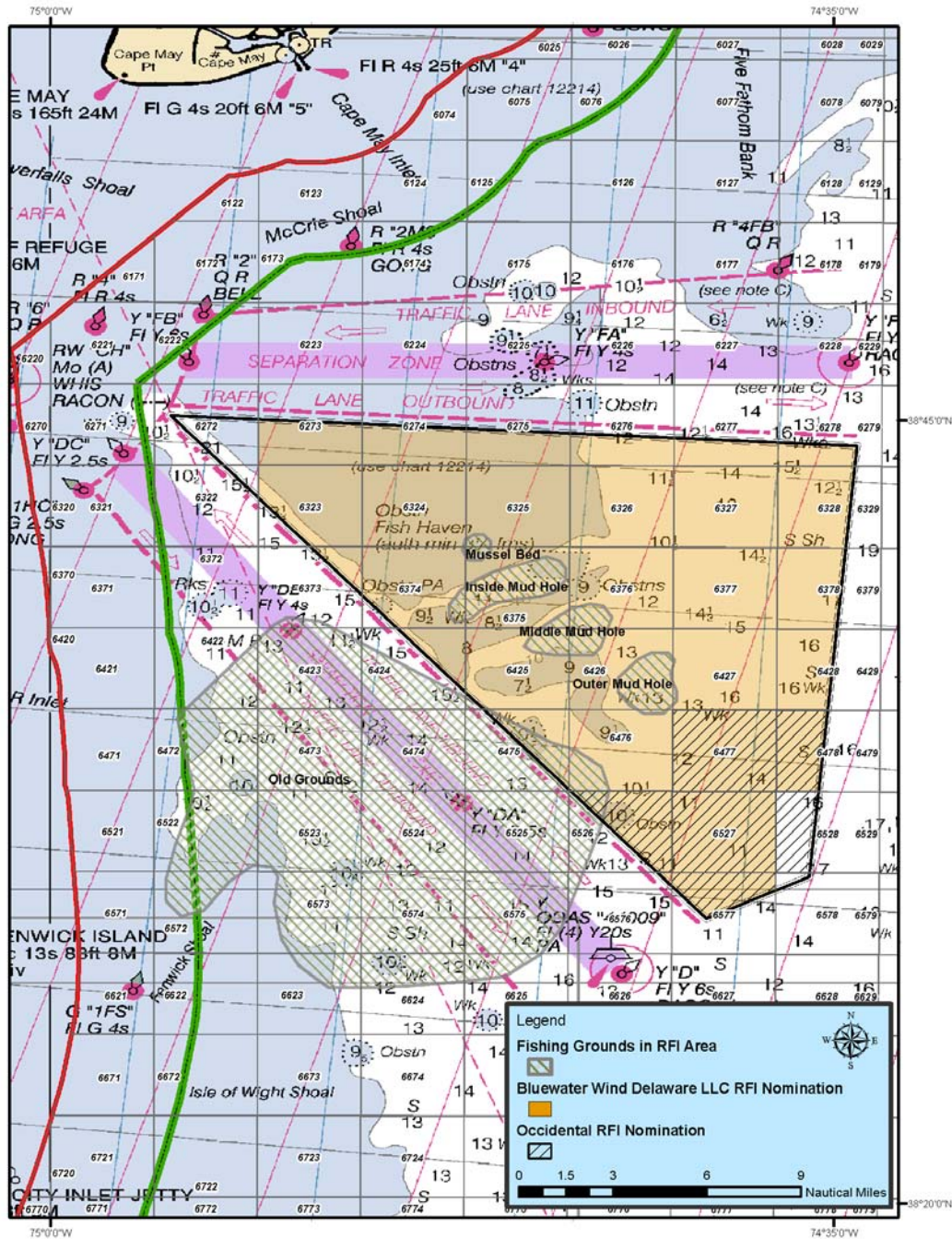


Government Comments

- NOAA Fisheries Habitat Conservation
- U.S. Coast Guard Fifth District
- Department of Defense

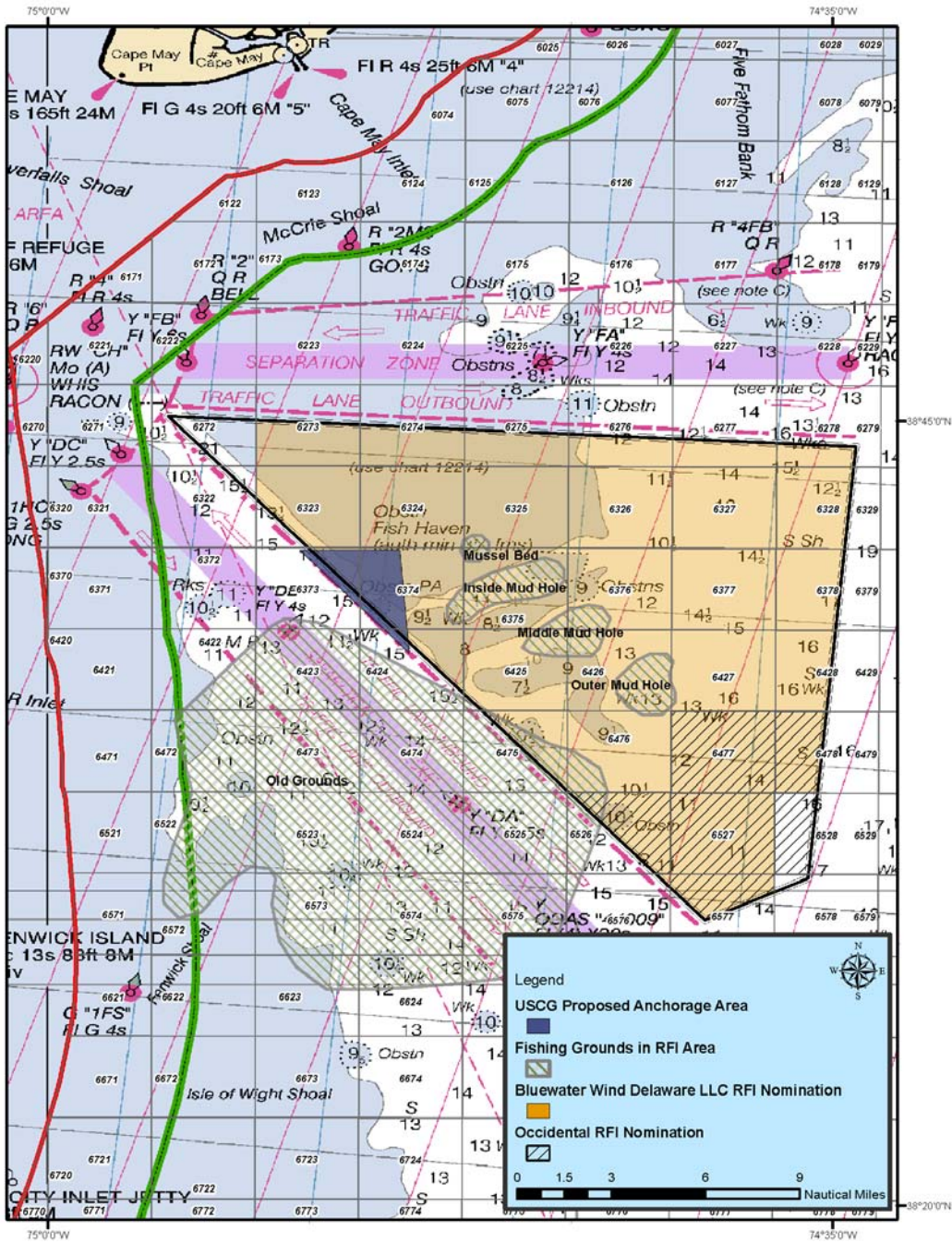
NOAA Fisheries

- Important fishing grounds are located in the area of interest, including Old Grounds, Mussel Bed, Inside Mud Hole, Middle Mud Hole, and Triple Wrecks and Outer Mud Hole
- The area is an important marine habitat requiring consultation under MSA, ESA, and MMPA
 - EFH for 30 species
 - Habitat Area of Particular Concern (HAPC)
 - NMFS listed and Candidate species



U.S. Coast Guard

- Danger Area
- Potential Anchorage Area
- Potential Buffer from TSS
 - Traffic pattern study needed
 - Vessel Traffic Services (VTS) may be needed
- Transmission Cable
- Traditional shipping routes



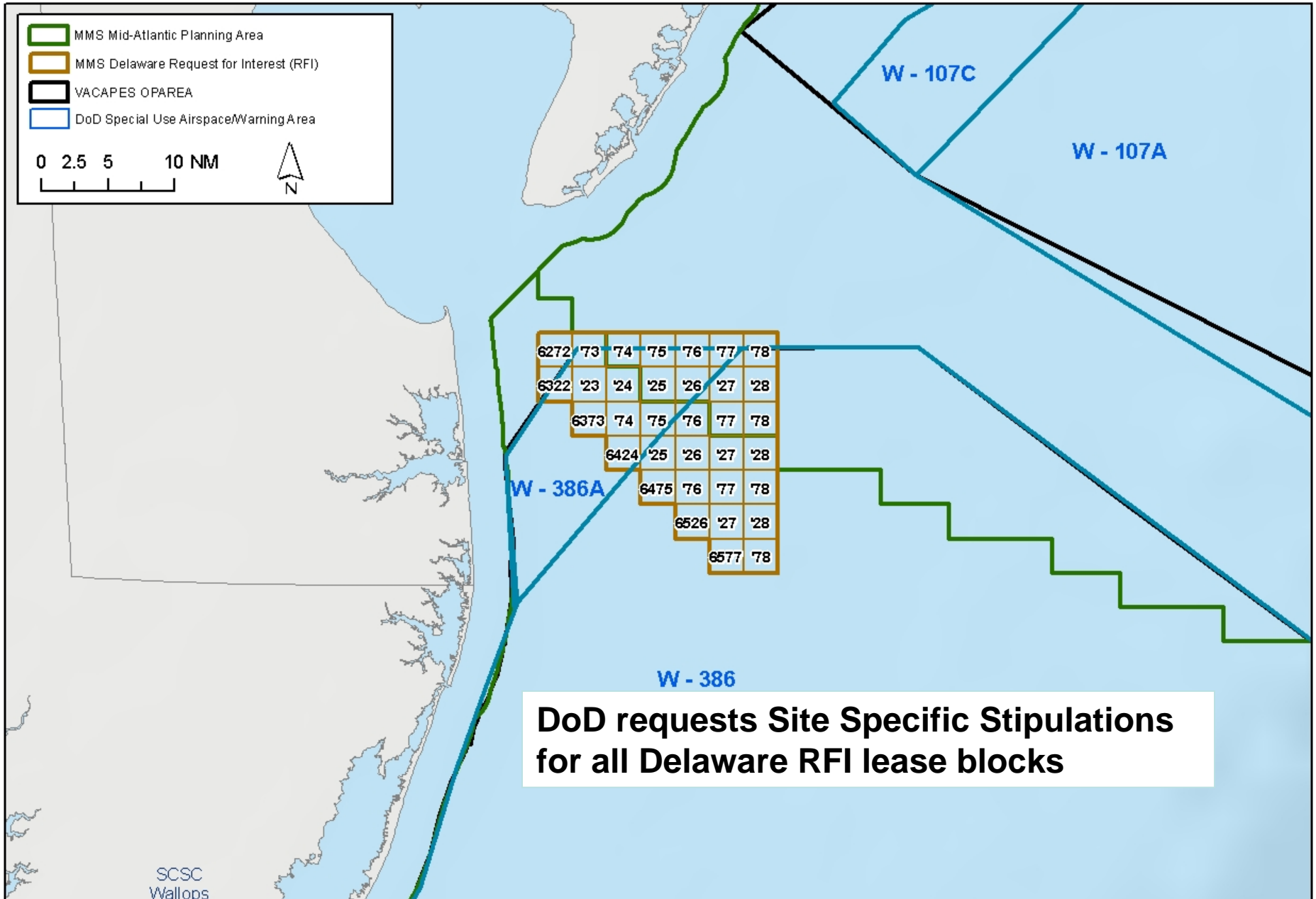
Department of Defense



Methodology

- **Categorize DoD Virginia Capes (VACAPES) offshore equities and potential wind energy development using:**
 - 1. Unrestricted**
 - 2. Site Specific Stipulations**
 - 3. Wind Energy Exclusion Area**
- **DoD Operating Area (OPAREA) overlaid with the Delaware RFI**
- **Extensive analysis and coordination process with Services**

NORTHERN VACAPES MMS DELAWARE RFI FOR OFFSHORE WIND



Thank you!
