



THE MARYLAND CALL FOR INFORMATION (CFI) AREA

George Detweiler
U.S. Coast Guard
MD State Task Force Meeting
June 24, 2011



PROCESS

- Developed Red-Yellow-Green (R-Y-G) definitions
- Developed a process for classification of lease blocks
- Reviewed comments to RFI
- Reviewed available information including
 - AIS data and user input
- Reviewed existing traffic patterns
- Reviewed existing literature
- Considered opinions/advice of USCG Subject Matter Experts (SME) on waterways management and the ACPARS Workgroup

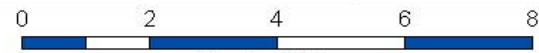
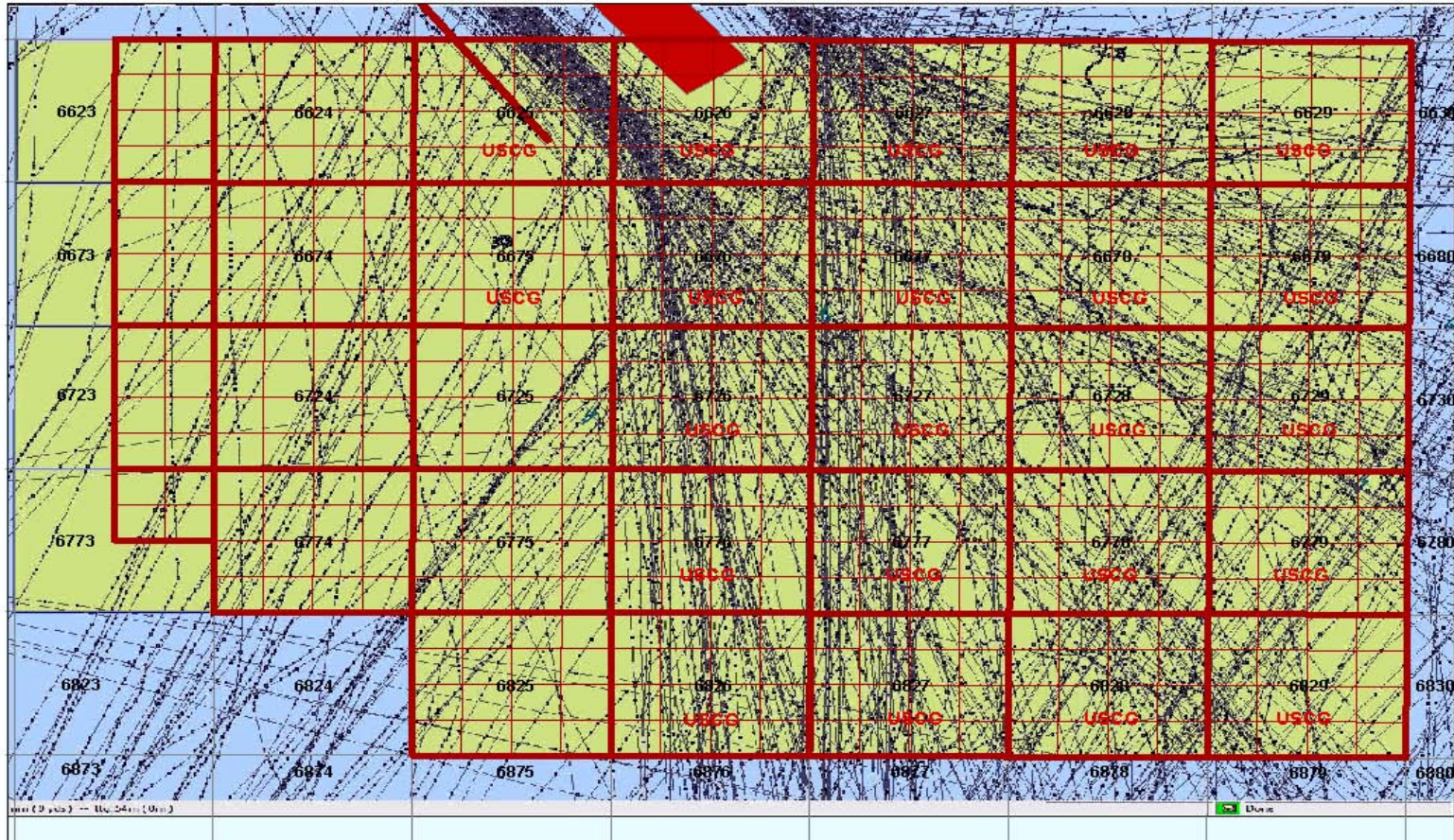


PROCESS

- Applied concepts from UK MGN 371 (guidance for determining risk levels based on proposed OREI distances from shipping routes)
- Considered potential modifications to existing routing measures and the creation of new routing measures
- Senior Coast Guard leadership review
- Meetings/conference calls with BOEMRE
- Submitted recommended classified blocks to BOEMRE



Maryland - RFI



Nautical Miles

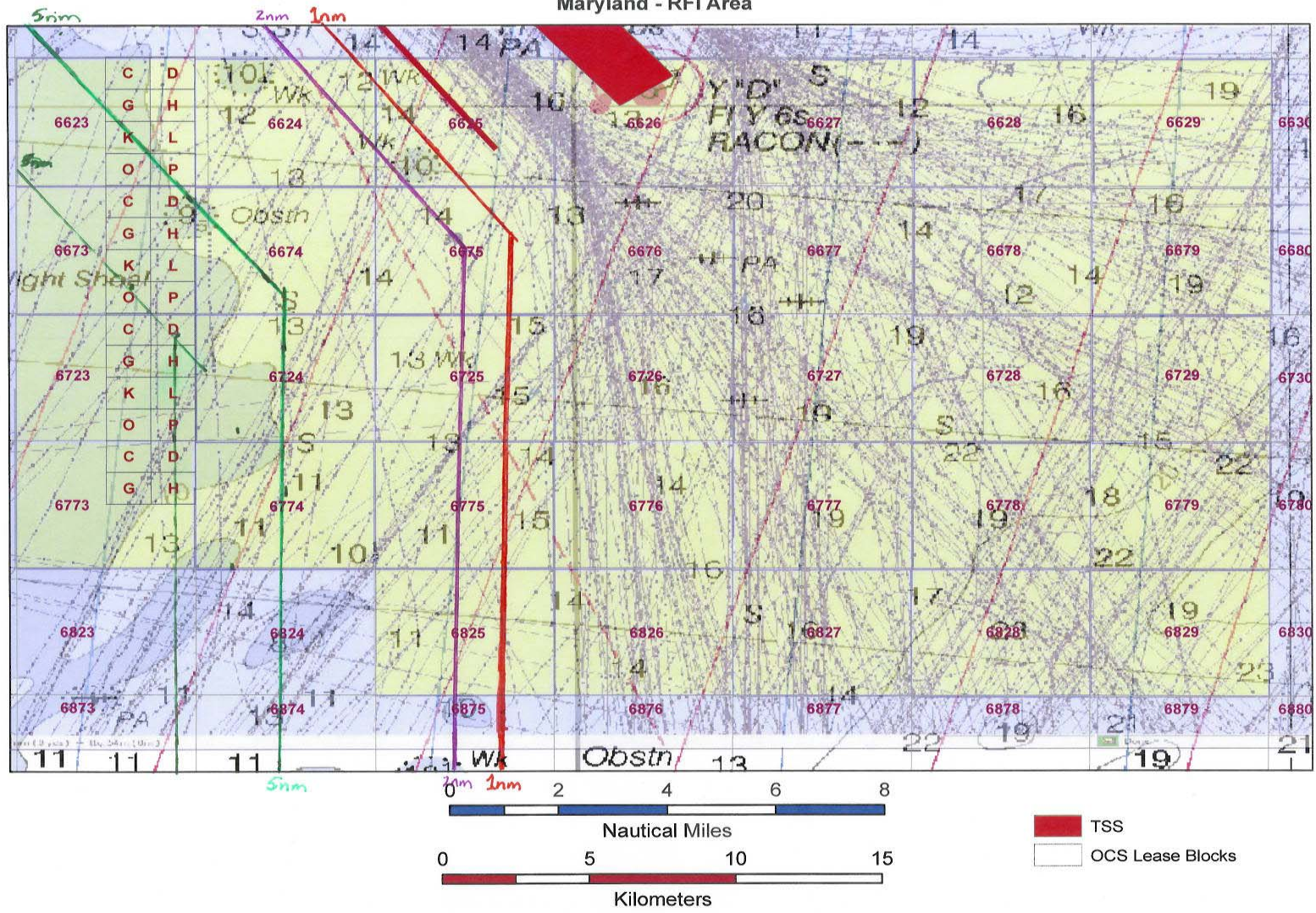


Kilometers

- RFI with Aliquots
- TSS
- OCS Lease Blocks

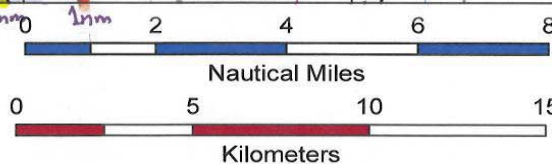
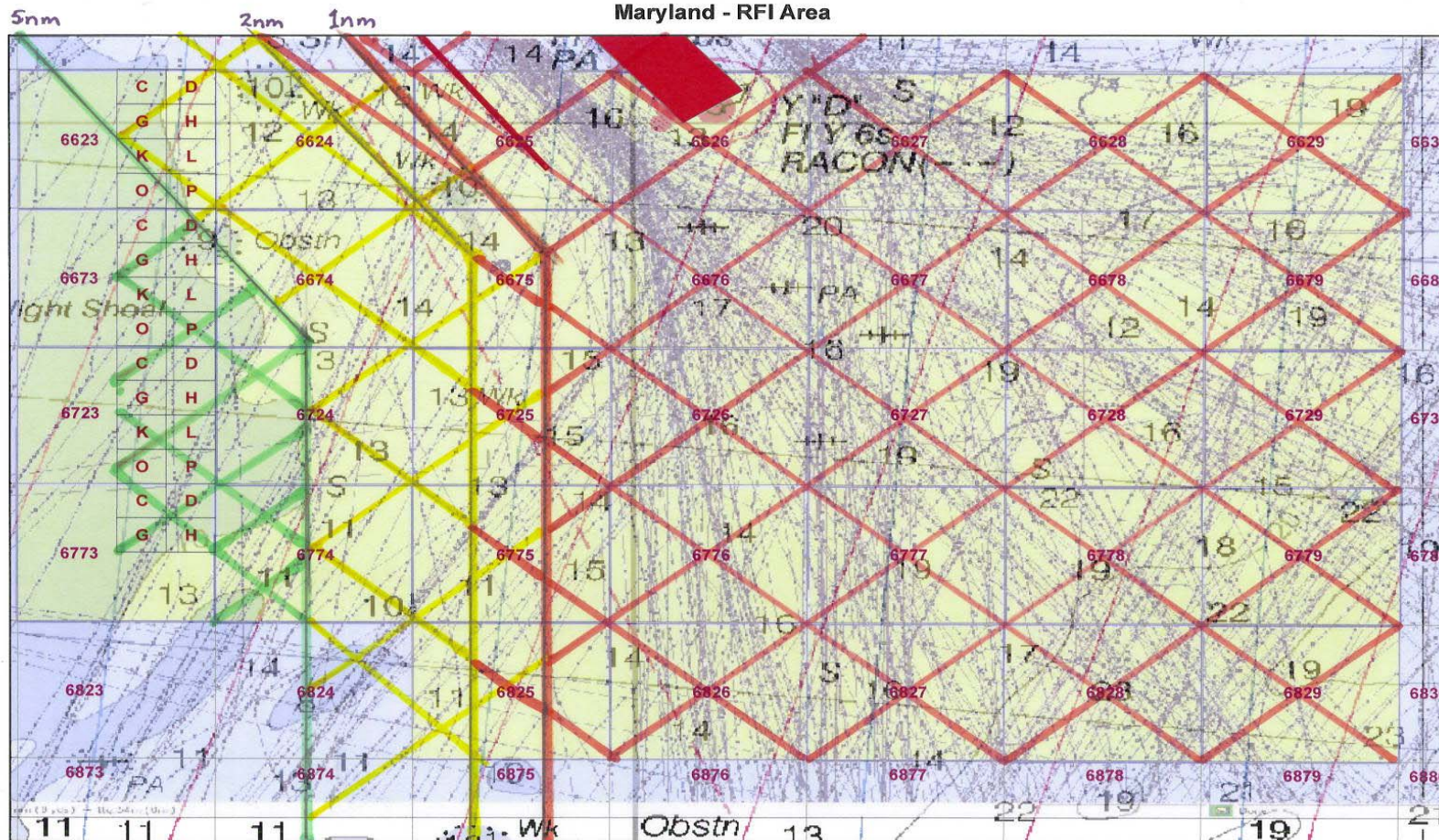


Maryland - RFI Area

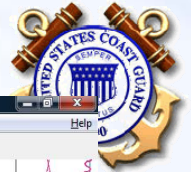




Maryland - RFI Area

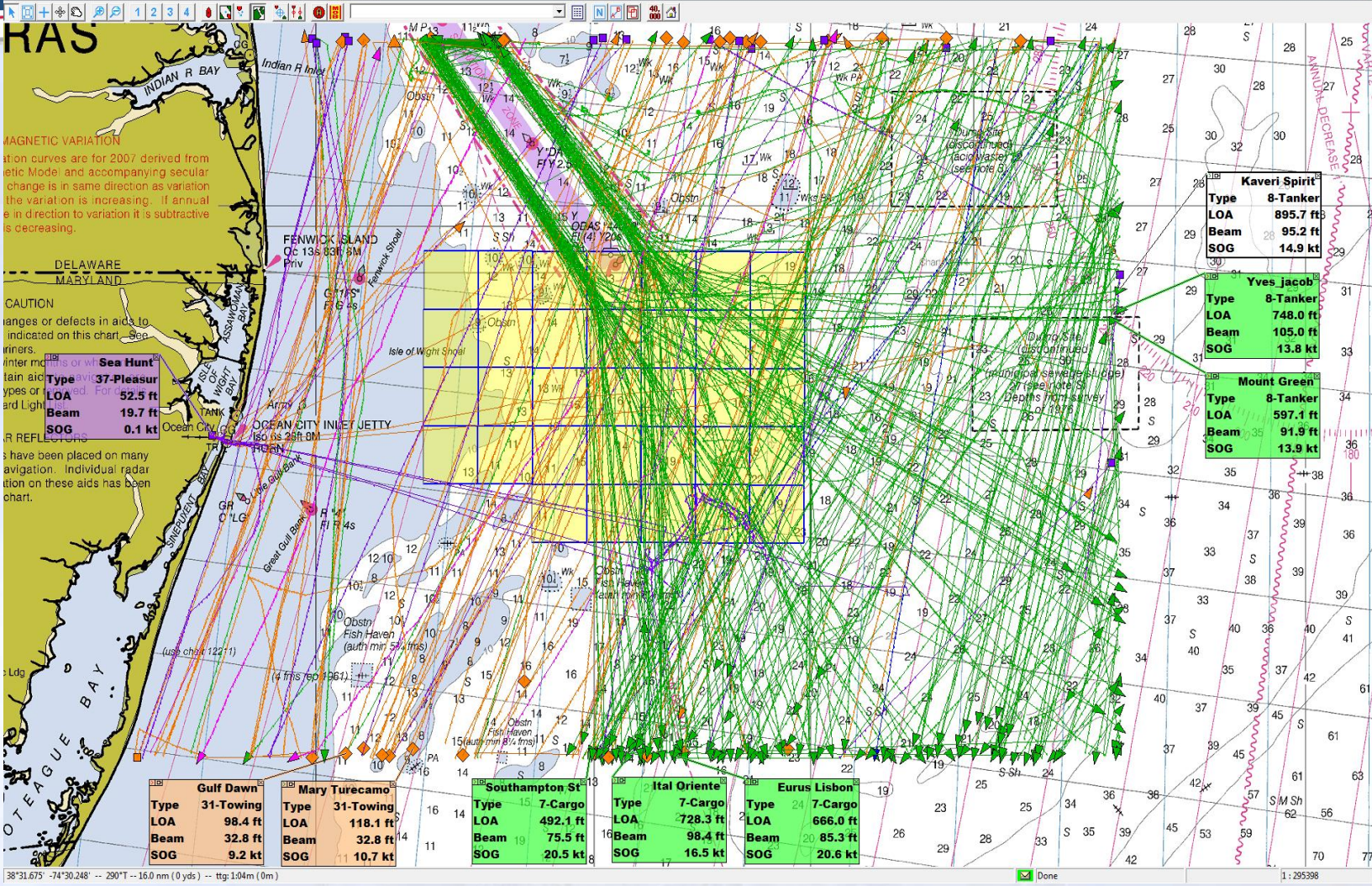


TSS
 OCS Lease Blocks



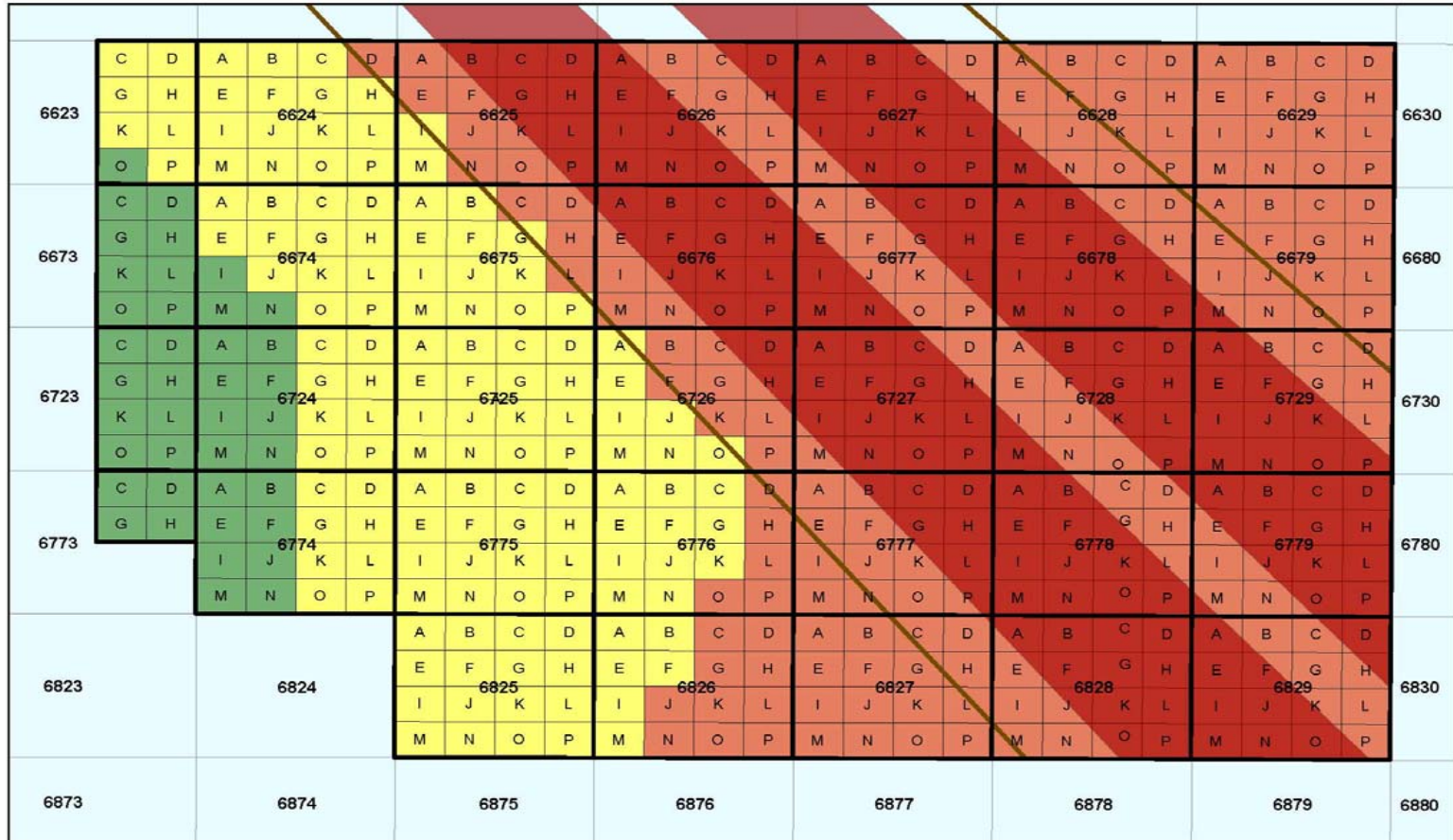
0:BOEM.CONF - TV32 - Nov 18 2010 - 15:20:19

File View Chart Utilities Config Contacts Navigation Set Bookmark Goto Bookmark

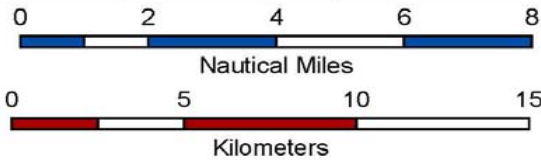




Maryland Potential Call for Information



- 1nm Buffer of TSS
- TSS with Extension
- USCG Designation**
- No Development
- Included in CFI, but Needs Further Study
- Minimal Concerns for Development

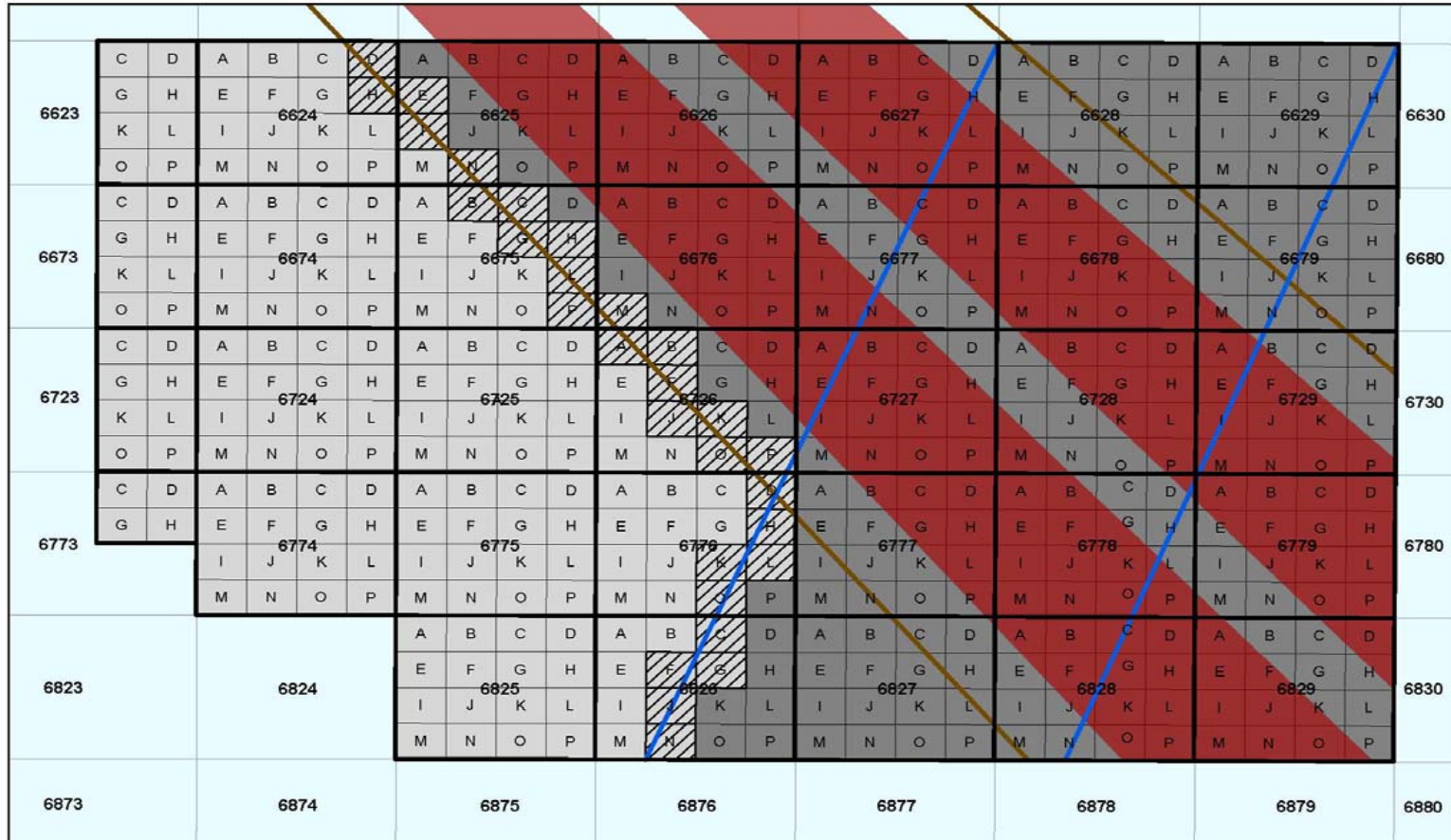


Source: US Coast Guard. Assuming extension of TSS and implementation of fairways.

Map ID: PACB-2011-1003

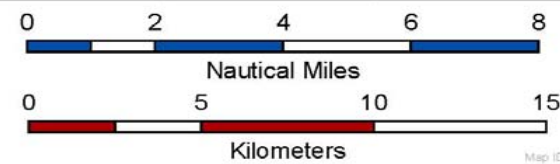


Maryland Potential Call for Information



- USCG Recommended Fairway
- 1nm Buffer of TSS
- TSS with Extension
- Available for leasing, but only partially developable
- No Development
- Area Under Consideration for Inclusion in the CFI; ongoing discussion with USCG on area and conditions

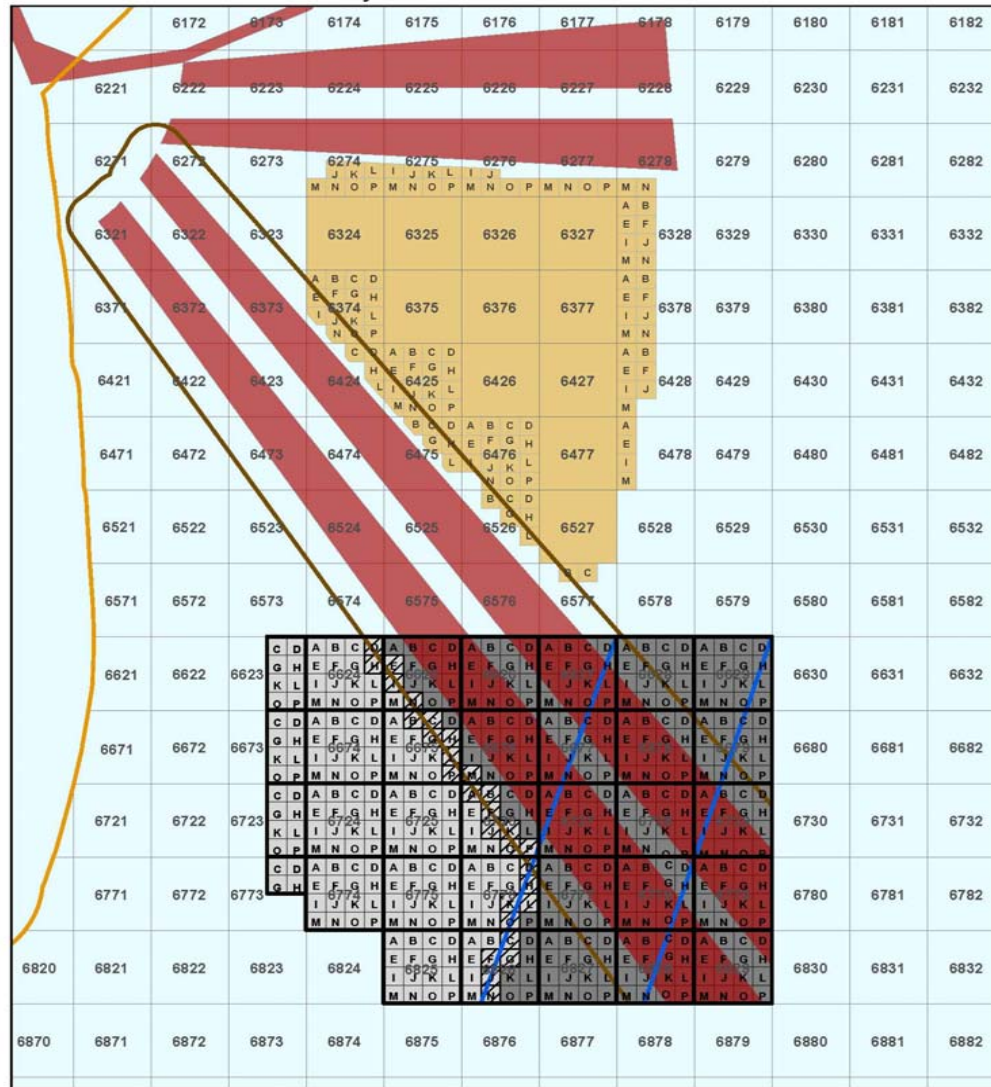
Deliberative and pre-decisional work document.



Map ID: PACB-2011-1048

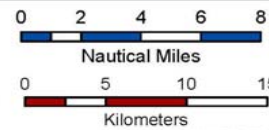


Maryland Potential Call for Information

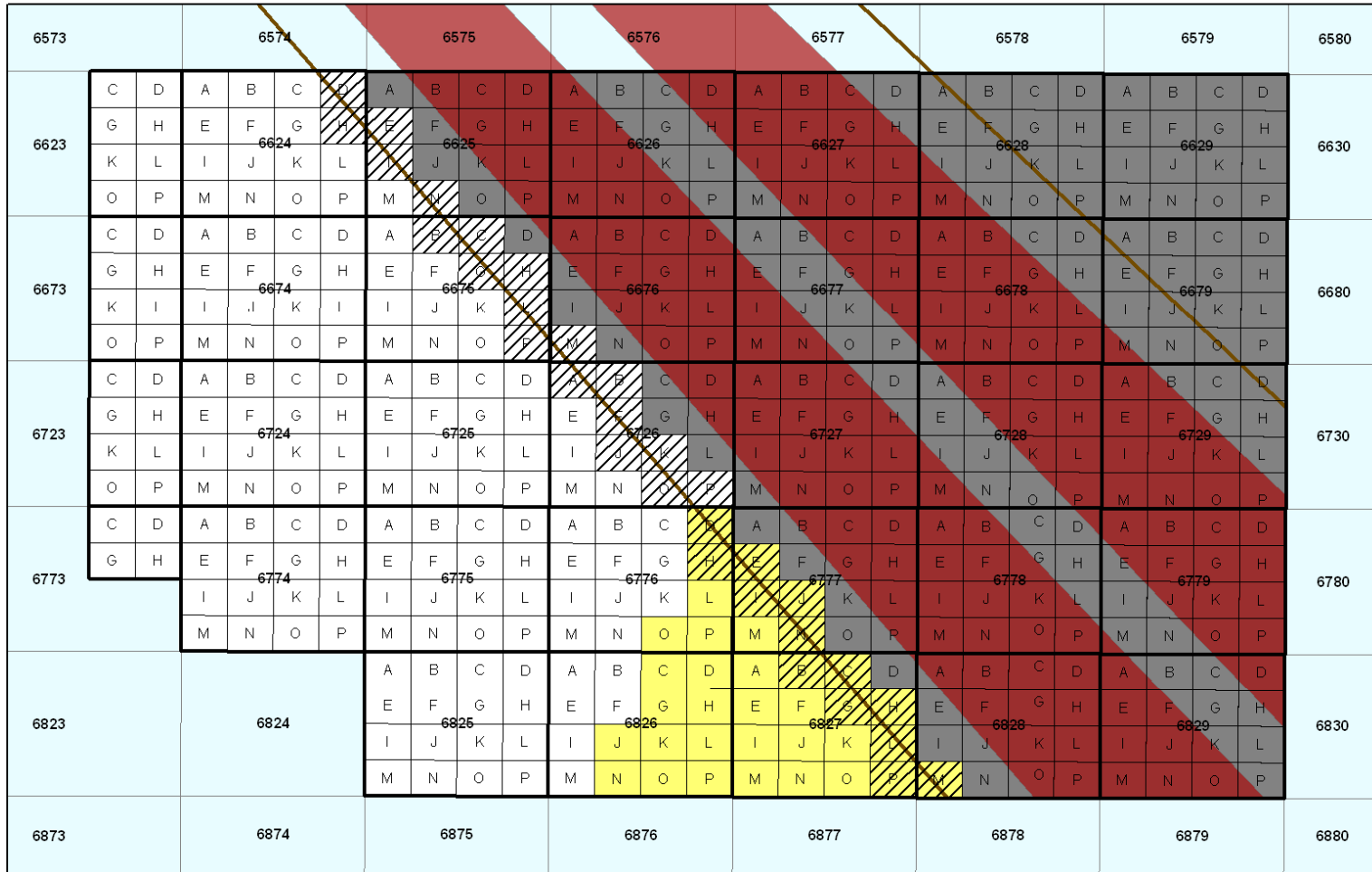


- USCG Recommended Fairway
- 1nm Buffer of TSS
- TSS with Extension
- Delaware DNCI
- Available for leasing, but only partially developable
- No Development
- Area Under Consideration for Inclusion in the CFI; ongoing discussion with USCG on area and conditions

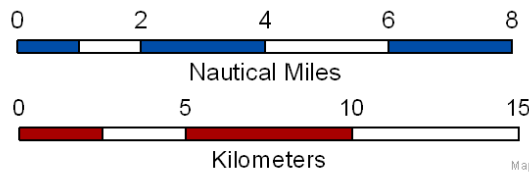
Deliberative and pre-decisional work document.



Map ID: RACB-2011-1059



- Existing Traffic Separation Scheme
- 1nm Buffer of Traffic Separation Scheme
- Traffic Separation Scheme Extension (Hypothetical)
- Area of High Navigation Concern
- Excluded Area
- Included Area
- Areas with Potential No Build Zone Stipulation



Deliberative and pre-decisional work document.

Map ID: PACB-2011-1070B



CAUTION

The USCG has advised BOEMRE that all blocks included in the Call may be considered for possible leasing and potential development. However, the USCG advises that these blocks require further study and analysis of existing traffic usage and patterns, as well as projected future traffic increases based on the development of adjacent and adjoining blocks which will be accomplished during the ACPARS. Such an evaluation will help the USCG determine what, if any, risks exist, and whether USCG should recommend that BOEMRE remove any blocks included in the Call area from consideration for leasing and potential development, or consider potential mitigation measures for blocks that are made available for development.



CONCERNS

- “Moving/relocating” traffic
- Cumulative impacts of Atlantic Coast projects
- False expectations of developers
- Shrinkage of area



FUTURE

- BOEMRE publishes the CFI
- Review comments to the CFI
- Conduct/complete the ACPARS
- Revisit recommended R-Y-G classification
- Recommend to BOEMRE revisions to CFI



ACPARS



- Announced in the *Federal Register*
 - 76 FR 27288; May 11, 2011
- Comment period closes Aug 9, 2011
- Conduct public outreach including public meetings
- Complete by May 1, 2012
- Results
 - Inform the USCG about the navigational safety risks, if any, associated with construction of OREIs
 - Establish new vessel routing measures
 - Modification of existing routing measures
 - Removal of some existing routing measures off the Atlantic Coast from Maine to Florida



United States Coast Guard

Marine Transportation Systems Management



Providing navigation safety information
for America's waterways

George Detweiler
George.H.Detweiler@uscg.mil
202-372-1566 (office)
202-372-1991 (fax)

COMMANDANT (CG-5533)
ATTN: NAVIGATION STANDARDS
DIVISION
US COAST GUARD
2100 2ND ST SW STOP 7580
WASHINGTON, DC 20593-7580